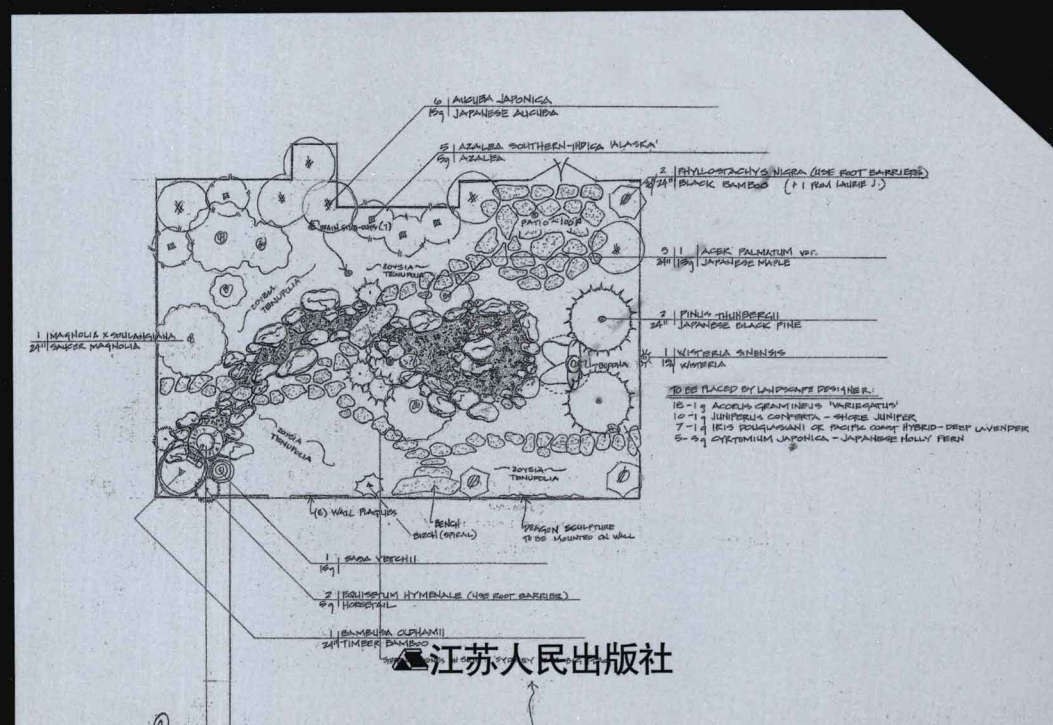


# Villa Garden



## 规划与设计



图书在版编目 (C I P) 数据

别墅庭园规划与设计 / 凤凰空间·华南编辑部编

— 南京 : 江苏人民出版社, 2012. 4

ISBN 978-7-214-07913-8

I. ①别… II. ①凤… III. ①别墅—庭院—园林设计

IV. ①TU986. 5

中国版本图书馆CIP数据核字(2012)第013245号

## 别墅庭园规划与设计

凤凰空间·华南编辑部 编

策划编辑 张晓敏

责任编辑 刘 焱 张晓敏

装帧设计 杨 傲

责任监印 彭李君

出 版 江苏人民出版社(南京湖南路1号A楼 邮编: 210009)

发 行 天津凤凰空间文化传媒有限公司

销售电话 022-87893668

网 址 <http://www.ifengspace.cn>

集团地址 凤凰出版传媒集团(南京湖南路1号A楼 邮编: 210009)

经 销 全国新华书店

印 刷 精一印刷(深圳)有限公司

开 本 889毫米×1194毫米 1/16

印 张 13

字 数 104千字

版 次 2012年4月第1版

印 次 2012年4月第1次印刷

书 号 978-7-214-07913-8

定 价 98.00元(USD33.00)

(本书若有印装质量问题, 请向发行公司调换)

## Acres Wild Landscape & Garden Design

*1 Helm Cottages, Nuthurst  
West Sussex, RH13 6RG, United Kingdom*

*[www.acreswild.co.uk](http://www.acreswild.co.uk)*

*[enquiries@acreswild.co.uk](mailto:enquiries@acreswild.co.uk)*

*(01403) 891084*

## Charles Anderson | Atelier ps

*85 Columbia Street, Suite 101  
Seattle WA 98104, USA*

*[www.ca-atelierps.com](http://www.ca-atelierps.com)*

*[info@charlesanderson.com](mailto:info@charlesanderson.com)*

*(206) 322 0672*

## Design Workshop

*120 East Main Street  
Aspen, Colorado 81611*

*[www.designworkshop.com](http://www.designworkshop.com)*

*[dwi@designworkshop.com](mailto:dwi@designworkshop.com)*

*970 925 8354*

## Grace Design Associates

*3010 Paseo Tranquillo  
Santa Barbara, CA 93105*

*[www.gracedesignassociates.com](http://www.gracedesignassociates.com)*

*[info@gracedesignassociates.com](mailto:info@gracedesignassociates.com)*

*805 687 3569*

## Jeremy Ferrier Landscape Architect

*Suite 4/ 72 Vulture Street  
West End, 4101*

*[www.jeremyferrier.com.au](http://www.jeremyferrier.com.au)*

*[jeremy@jeremyferrier.com.au](mailto:jeremy@jeremyferrier.com.au)*

*07 3844 0700*

## Jim Fogarty Design Pty Ltd

*2 Illowa Street, Malvern East  
Victoria, 3145 Australia*

*[www.jimfogartydesign.com.au](http://www.jimfogartydesign.com.au)*

*[jim@jimfogartydesign.com.au](mailto:jim@jimfogartydesign.com.au)*

*+61 3 9813 8550*

## Marcus Barnett Landscape and Garden Design

*Studio CW8/9, The Cranewell  
2 Michael Road, London SW6 2AD*

*www.marcusbarnettdesign.com*

*info@marcusbarnett.com*

*+44 (0) 20 7736 9761*

## Marpa Landscape Design Studio

*1275 Cherryvale Road  
Boulder, CO 80303*

*www.marpa.com*

*martinmosko@mac.com*

*(303) 442 5220*

## Philip Nash Design

*7 Braunston House, The Island  
Brentford, Middx, TW88ET*

*www.nashgardendesign.co.uk*

*nashgardendesign@gmail.com*

*+44 (0)208 560 5046*

## Shades of Green Landscape Architecture

*1306 bridgeway boulevard  
sausalito, ca 94965*

*www.shadesofgreenla.com*

*info@shadesofgreenla.com*

*415 332 1485*

## The Office of James Burnett

*550 Lomas Santa Fe, Suite A  
Solana Beach, CA 92075*

*www.ojb.com*

*marketing@ojb.com*

*858 793 6970*

Villa Garden

Plan

曾庆文  
译审

别墅庭园 凤凰空间·华南编辑部 编

规划与设计

& Design

 江苏人民出版社



# 规划与设计



Plan Design

# Preface

---



I am much honored to write the preface of this book and to be one of the contributors.

This is a book for landscape architects, garden designers, homeowners, students and others who are interested

in gardens. It describes the gardens with text, images and plans for each garden, so it is possible to study them more closely. Each garden tells a story about the clients and their needs, about challenges with the site that had to be met and how the designer chose to design the garden within these perimeters.

I am a Norwegian woman running a landscape architecture studio in California with projects featured in a Chinese book. I think this says something about how international design and gardens are. We pick up inspiration anywhere in the world and bring some of it into our landscapes all over the world. This is nothing new. During history, garden ideas have been picked up while travelling and brought home where they have been adjusted to work with the local climate and conditions. Now it just happens so much faster. Instead of it being

on a sea voyage that took years, we can now click through internet or pick up a book like this for inspiration.

But what makes landscape design interesting is that you can't just take a garden from somewhere else and copy it. I studied landscape architecture in Norway and grew up in a very green landscape with ample water. After moving to California, I learned to appreciate the dry, golden hills in the summer and to understand how scarce water is and how important that is to consider in your garden. A successful landscape has to work with the site and environment. The layout and shapes have to work with the topography and the surroundings. The plants have to be selected based on sun exposure, climate, hardiness, water use and soil. And the garden has to fit with the house and the inhabitant's needs and wants.

Gardens are fascinating. Many people have a passion for gardens, and often for different reasons. Gardens are at the crossroads of design, art, horticulture, engineering, construction, nature, and food production and to have your own place to enjoy peace. That is the beautiful thing about gardens. You have this little piece of land where you can create your own oasis.

When I start to work on a new garden design, I have some principles and ideas I apply. I also love to look through magazines and books for inspiration. Here is my checklist that I keep in mind when I start designing a garden:

1. Analyze the site and the environment. See what the site has of positive features that you can use, it can be a nice view, mature trees, a nice house. Experience the environment on the site, notice things like sun exposure, wind, noise, etc.
2. Find out what the clients want and need – sometimes they know what they want, other times they haven't given it much thought and you have to try to find out.
3. Think about how this garden can make a positive contribution to the environment. It can be by planting trees and providing shade in a harsh environment, or by providing shelter for wildlife. In urban areas make sure we create permeable surfaces that have a positive effect on drainage and recharging of the water table.
4. Make sure your plants are well fitted to the environment they will be placed in.

5. Don't go overboard with effects. Keep your material and plant palette restricted, especially in small gardens. This often makes for more visual impact.

This book shows a nice sampling of gardens in USA, Australia and England, etc. There are the contemporary gardens, European gardens that refer to gardens inspired by classical European gardens, Japanese gardens inspired by classical Japanese temple gardens, and fusion style gardens, that are hard to put into a specific category. Enjoy and get inspired!



Ive Haugeland  
Principal  
Shades of Green Landscape Architecture

# 序言

---

应邀为本书写序，并且在书中发表部分作品，我感到十分荣幸。

本书通过翔实的文字、丰富的照片以及相关规划图纸，深入分析每个项目，适合景观建筑师、庭园设计师、业主、相关专业学生及其他对庭园感兴趣的人阅读。书中每个庭园结合业主需求、场地状况及难点等方面，讲述设计师如何运用规划之手、设计之笔，在综合考虑各方面因素的前提下，创造出优秀的庭园空间。

我生于挪威，在美国加利福尼亚州开办景观建筑工作室，作品被收录于中国的图书中。我想这个事实在一定程度上反映了庭园及其设计的国际化。我们从全球各地吸收创作灵感，再将其运用于全球各地的庭园项目中。时至今日，这种做法亦无新奇之处。历史上，人们早已在旅行途中吸收各地的庭园设计理念，经过调整，使其更适

合本地的气候和其他条件后，加以运用。只不过，如今这一进程快速多了。我们不再需要长年累月漂洋过海，只需轻点鼠标或翻开一本像这样的书，便可汲取八方灵感。

然而，景观设计之所以吸引人，在于它拒绝一切生搬硬套的做法。我从小在一个水量充沛、绿树成荫、如园林般美妙的环境中长大，并且在挪威接受景观建筑教育。来到加利福尼亚州之后，我才懂得欣赏夏天山中干燥的气候和金灿灿的景观的美妙之处，才知道水之稀罕，才明白水之于庭园的重要性。一个成功的庭园设计项目，必然是与场地、环境相互协调的项目。布局和形状必须配合地形及周边环境，植物品种的选择应以光照、气候、抗性、水状况及土质为出发点，而庭园本身还需符合业主的需求。

庭园是一个魅力无穷的空间，很多人由于各种各样的原因，酷爱庭园。它集设计、艺术、园艺、工程、构造、自然和食物生产于一身，还为人们提供享受宁静的处所。这正是庭园的美妙之处。只要有方寸之地，人们就能创造一片属于自己的绿洲。

如何开始一个新的庭园设计项目，我有自己的原则和想法，当然我也会在书本和杂志中寻找灵感。以下是我在开始一个新的项目时通常会考虑的一些方面：

1. 分析场地与环境。挖掘并发挥场地的优势，如优美的景观、成熟的树木，抑或美观的房子；亲身体验场地的环境，关注日照、风、噪声等方面。
2. 了解客户的需求。有些客户对庭园设计有明确需求；而有些客户对此毫无想法，设计师得帮他们找出自己的需求。

3. 让庭园对环境产生积极的作用。譬如在日照强烈的庭园中种植树木，提供纳凉之处，或者为本地野生动物提供庇护之所。在城区庭园中，确保地表具有渗透性，以利于排水和地下水补给。

4. 确保树种能适应当地环境。

5. 不要过度追求庭园设计效果。对材料、植物种类的应用应有所节制，特别是在小面积的庭园中，如此一来，反而视觉效果更强烈。

本书展示了位于美国、澳大利亚、英国等地的优秀庭园设计项目，涵盖了现代风格庭园、古典欧式庭园、古典日式庭园，以及混搭或风格特征不明显的综合式庭园。打开本书，开始你的灵感之旅吧！

艾夫·豪格兰  
Shades of Green 景观建筑公司负责人

## Contemporary Garden

## 现代庭园

Outdoor Lounge	露天休闲庭园	012
Modern Revival	新式复兴庭园	016
Contemporary Living	现代居家庭园	020
Modern Transformation	时尚大变身	024
Front Yard Retreat	别致休闲前院	028
Red Walls	红墙悦动庭园	032
Ocean View Garden	无敌海景庭园	036
Australian Garden	澳大利亚地貌园	040
Simple Backdrop for Varied and Interesting Plants	绿趣庭园	048
Resort Garden	娱乐休闲庭园	054
Garden for Relaxation	信步闲庭	058
Bringing the Beach to Your Home	海滩式花园	064
A River Garden	沐水庭园	070
Small Garden VS Large Landscape	多样个性庭园	074
Contemporary Sub-tropical Garden	亚热带现代庭园	078
Split-level Seating Terraces	错层式休息露台	082
Sunken Courtyard	下沉式庭园	086
Contemporary Entertainment Garden	现代休闲园	092
Private View-oriented Terrace	私密观景庭园	096
Simple Contemporary Garden	现代简约风格园	100

## European Garden

## 欧式庭园

Rural Natural Garden  
Mediterranean Estate  
Intimate Gardens, Vivid Colors  
A Series of Distinct Gardens  
Grand Garden Making a New  
House Look Old  
Victorian Garden

自然田园花园 108  
地中海风情庭园 112  
缤纷彩乐园 116  
特色庭园系列 120  
新式复古园 132  
维多利亚风格园 138

## Japanese Garden

## 日式庭园

Flowers in Space  
Japanese Jewel  
Tranquil Zen Garden

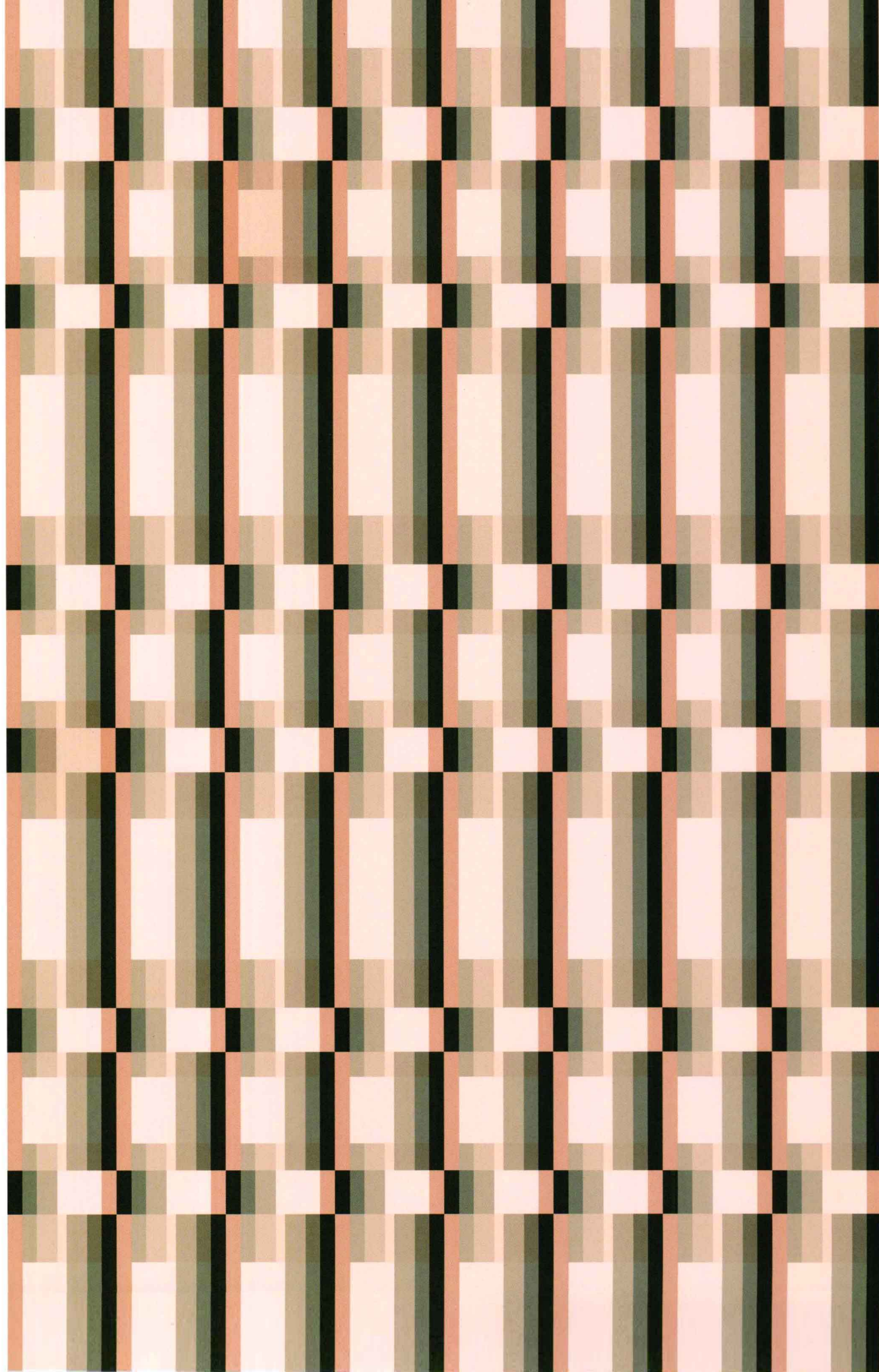
锦绣花海宁和园 144  
和风瑰宝园 154  
恬静禅园 158

## Fusion Style Garden

## 综合式庭园

Contemporary Country Garden  
A Virtuous Garden Far Beyond  
Form and Function  
Odd and Composed  
Form and Foliage  
Hidden Valley  
Soft Landscape

现代乡村花园 166  
空灵净土 174  
清宁园 182  
万态百草园 186  
神秘谷 192  
柔和景观 200



Contemporary Garden

现代庭园

Location  
Marin County,  
California, USA

项目地点  
美国加利福尼亚州  
马林郡

Area 面积  
185 m<sup>2</sup>

Design Company 设计公司  
Shades of Green Landscape Architecture

# Outdoor Lounge 露天休闲庭园



Garden Plan 总平面图

Designer 设计者

Ive Haugeland, Jamie Morf

Photographer 摄影师

Lauren Knight



In this project Shades of Green was hired to help the clients extend their outdoor living space beyond the existing small porch and lawn. The young couple did not use the lawn, so

the designers added more patio space by reducing the lawn. The existing porch's half-circle shape made it challenging to add to the patio space without getting conflicting shapes in the design. The solution became a series of stone bands in different lengths at a lower level. The stone bands create a bold transition between the existing concrete patio and the lawn. This design is also beneficial to the site as it allows storm water to permeate back into the soil through the pebble bands. The generous size of the new patio allows for comfortable outdoor seating surrounding a low fire bowl. Having a movable fire bowl with a portable bio-ethanol burner allows for rear round entertaining in the mild California climate.

As this area was on top of the underground garage and there was only a few feet of soil under the patio, so plants chosen were perennials, grasses and shallow rooted shrubs. The existing mature screening shrubs at the fence were kept as well as the blue fescues that the client adored and called "sea urchins plants". Heeding a request for color they chose a very eye catching planting with a limited color palette of peach, purple, chartreuse and blue-green. By layering the plants they played with the textures of the succulents, grasses and herbs. The mixture of succulents, drought-tolerant blooming perennials and grasses around the perimeter of the yard creates eye-popping color and interest throughout the year. Succulents are also growing randomly in the pebble bands to soften the hard lines of the green bluestone bands. A custom fitted wood counter at the existing concrete patio creates a compact outdoor kitchen with a low profile infra-red grill. The side counter also hides a small roof and creates extra counter space.

The plantings used in this garden include Flowering Maple (*Abutilon* 'Fon Vai'), Apricot Sprite Hyssop (*Agastache a.* 'Apricot Sprite'), Black Chervil (*Anthriscus sylvestris* 'Raven's Wing'), Limewall Euphorbia (*Euphorbia* 'Limewall'), Walker's Low Catmint (*Nepeta × faassenii* 'Walker's Low'), Russian Sage (*Perovskia* 'Blue Spire'), Maori Queen New Zealand Flax (*Phormium* 'Maori Queen'), Maori Sunrise New Zealand Flax (*Phormium* 'Maori Sunrise'), Alice Keck Park Aeonium (*Aeonium* 'Alice Keck Park'), Mexican Snowball (*Echeveria elegans*), Ghost Echeveria (*Echeveria lilacina*), Purple Emperor Stonecrop (*Sedum* 'Purple Emperor'), Superba Fescue (*Festuca amethystina* 'Superba').

