

ARCHITECTURE DESIGN

MODEL

建境

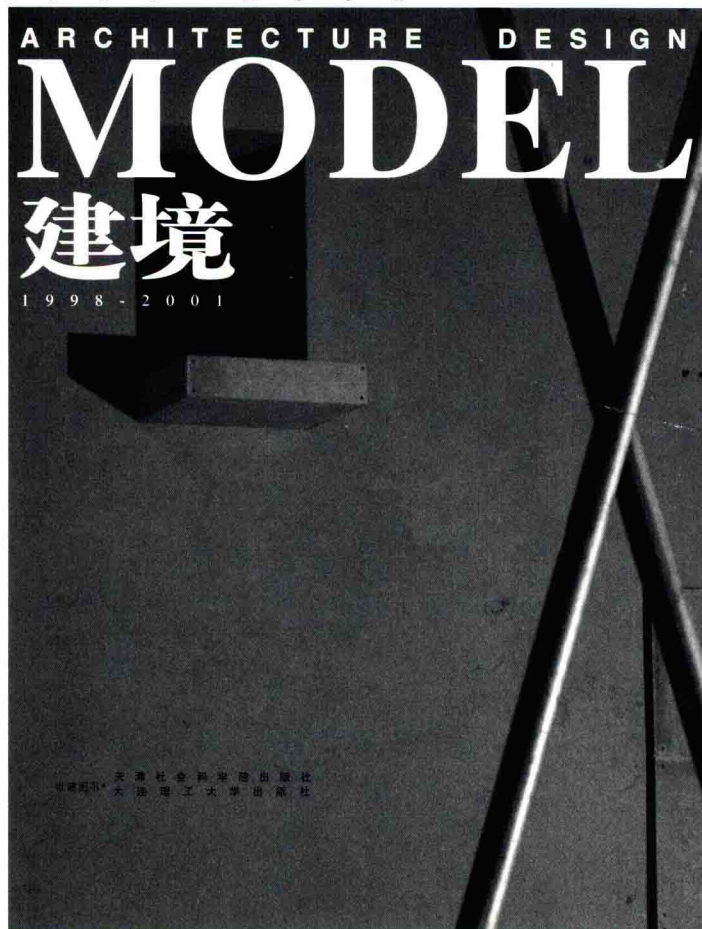
建筑模型

1 9 9 8 - 2 0 0 1

世建图书 · 天津社会科学院出版社
大连理工大学出版社

建 境

Design & Model
1 9 9 8 - 2 0 0 1



建境建筑造型有限公司
世界建筑杂志社 合编

图书在版编目(CIP)数据

建境：1998－2001/建境建筑造型公司编．－天津：
天津社会科学院出版社，2001.6
ISBN 7-80563-907-8

I.建... II.建... III.模型（建筑）－图集
IV.TU205-64

中国版本图书馆 CIP 数据核字（2001）第 033611 号
.....

总 策 划：李 晖
策 划：张 剑、冯金良
主 编：建境建筑造型公司 世界建筑杂志社
责任编辑：史 建

出版发行：天津社会科学院出版社 大连理工大学出版社
出 版 人：荣长海
地 址：天津市南开区迎水道 7 号
邮 编：3000191
电 话：(022)23366354
传 真：(022)23003323
电子信箱：TSSA@Public.tpt.tj.cn
印 刷：深圳利丰雅高印刷有限公司
制 版：北京昆立得图文设计有限公司

开 本：220mm × 300mm 1/16
印 张：16
字 数：35 千
版 次：2001 年 6 月第 1 版 2001 年 6 月第 1 次印刷
印 数：1-3000
定 价：238.00 元

Preface

The construction of a building needs to go through numerous processes. Even at the stage of planning, an architect has to describe his idea through various means in order to be better understood. Either through a few strokes of lines on the paper, or by colors to show the complete and true body of the building, or use theories and academic words to describe it, or simply use model to visualize the future building. In terms of message transmission from the design to the completion of the building, these processes are but a noise, which can not perfect the building. But, it is very necessary, especially the model. It transforms the idea to actual artistic image, so that architect and others including the property owner can understand and communicate even the very professional terminology.

Model is not just an expression of the design. It can be used by both architect and property owner to study the shape, color, texture, material and detail. And thus to perfect the design.

Starting from Renaissance, model has become a part of conception in the process of designing. It was used in designing the dome of the Florence Cathedral. When designing the in Rome, Michelangelo even used a one-third-meter long model to illustrate to the pope the final effect. When he was the chief designer for St. Peter's Cathedral, he made altogether 4 models for the different stages of design. Models can be used to display and understand an image, but also for the working purpose to judge the shadow and scaling relations. On a 1565 fresco in Florence, Italy, used the model to show his design of St. Lorenzo Cathedral to the Grand Duke ruler of Florence. The background was a cathedral under construction. The fresco illustrates the use of model at that time. Today, the progress in technique of making models has totally upgraded the traditional concept of model.

Sometimes, the model itself has become part of the designing. It is a wonderful tool to express architect's idea and plays an important role in the success of the design scheme. During the examining of the designs competing for Shanghai Theatre in 1994, the winner has impressed the judging panel by the way the model displayed, the material used, the lighting and the position it being placed. On the contrary, there are also models that fail to reflect the real level of an architect even the design is good, or fail to make the design understood, and the conception expressed.

Today's technology has provided model powerful expressing abilities. The technique in making models is ever complicated. It is no longer a simple manual work, nor a simple miniature of a building. A model made by a high-level molder, precision equipment and professional material can vividly illustrate the environment of the building and the conception of the architect. Because model looks real and complete, it has become a piece of art loved by all.

Jianjing Company boasts many talented people, and has produced a lot of excellent model pieces in recent years. In developing its business in various fields, it makes remarkable contribution to China's urban construction development. The leader of the company himself is a talented architect and artist. His attention and understanding to the spirit of architecture makes model the speaker of architectural art. The book is a summary of Jianjing Company. It records its efforts in exploring new architectural expressions, and its recognition by the society, its cooperation with architects. Meanwhile, the book is also a record of the development of China's urban construction in recent years. We wish Jianjing Company a greater success.

Zheng Shiling
Vice Board Chairman, Chinese Institute of Architecture
Board Chairman, Shanghai Institute of Architecture
Former Vice President of Tongji University

序

建筑的实现需要经历无数个程序，还在方案阶段，建筑师就要通过各种手段将创意表达出来，让自己和他人观赏和理解。或寥寥几笔生动的线条跃然纸上，或五颜六色的渲染表现复杂而又真实的未来建筑，或引经据典侃侃而谈对方案加以描述，或用几乎所有的人都能看懂的模型栩栩如生地虚拟未来的建筑。就建筑设计到建筑最终建成的信息传达过程而言，这些程序其实都只是一种噪音，既不能为建筑增色，也不能使建筑更完美。然而，却是十分必要的。尤其是模型，它将设计思想转换成具体的艺术形象，让包括建筑师和业主在内的一切人都能看懂建筑师的那种专业性很强的语言，并得以与建筑师沟通。

模型不仅是设计的表达，无论是对建筑师还是业主而言，更可借助模型，在模型师的帮助下，相互切磋，在体块、色彩、材料、肌理、细部以及环境关系上进行推敲，优化并完善设计。

从文艺复兴时期开始，模型已经成为建筑设计过程中的的一个构思环节，在佛罗伦萨大教堂穹顶的设计竞赛时已经用模型表现设计构思。米开朗基罗在设计罗马的范尼斯府邸时，甚至用足尺的檐口模型向教皇说明建筑的最终效果。米开朗基罗在主持圣彼得大教堂的设计时，曾经制作过四个模型，这些模型代表了他在圣彼得大教堂的建造过程中，在各个阶段的设计思考。模型不仅可以用于形象的认识和表达，同时，作为工作模型，可以用来推敲光影关系和比例关系等。意大利的佛罗伦萨有一幅1565年的湿壁画，画面上伯鲁乃列斯基正在用模型向佛罗伦萨的统治者科西莫·德·美狄奇大公介绍圣洛伦佐教堂的设计，背景是一座正在施工的教堂，说明了模型在当时的作用。而今天模型制作技术的进步已经彻底更新了传统上对模型的概念。

有时候，模型已经成为设计方案的一个部分，是建筑师介绍其设计成果的良好表达手段，对建筑师设计方案的成败往往会起一定的促进作用。上海大剧院在1994年的设计竞赛评审时，中选方案在模型的展示方式、模型的制作材料和照明、模型放置的高度等，都让评委体会到建筑师的创意和用心良苦。相反，也不乏建筑师的设计很好，而模型则不能充分反映设计水平，或者不能帮助别人对建筑设计创意的理解，影响建筑设计构思的表达。

今天的技术手段使模型具有十分丰富的表现能力，模型制作技术也日趋复杂，已经不再是简单的手工劳作，也不是建筑的简略缩微。在高素质的模型师的创造下，借助精密的制作设备和专业化的材料，使模型可以十分逼真地表现建筑的环境和建筑师的创意。模型因其真实性和完整性，本身已经成为一种雅俗共赏的艺术品。

建境公司人才济济，近年来创作了大量的建筑模型精品，在业务领域上不断拓展，为中国城市建设的腾飞作出了卓越的贡献。公司的领导人本身就是一位有才华的建筑师和艺术家，对建筑精神的关注和理解使模型成为“建筑艺术的代言人”。这本书是建境公司的一个总结，真实地记录了他们对建筑表现的努力探索和追求，也体现了社会对他们的肯定，建筑师与他们的合作。同时，这本书也是中国近年来城市建设轨迹的一个记录。祝愿建境公司取得更大的成就。

郑时龄

郑时龄
中国建筑学会副理事长
上海建筑学会理事长
同济大学原副校长

前言

1

p r e f a c e

中国房地产设计 & 模型

2

Real Estate of China, Design and Model

虹口现代公寓	4
新天地广场	8
江南山水·鹏欣绿苑	14
东方曼哈顿	17
香榭丽花园	18
维也纳花园	24
上海奥林匹克花园	26
卢湾·秀	28
明安绿苑·翠庭	30
上海映象·阳城苑	31
东方丰甸苑	32
上海万里城	34
东方剑桥	36
大家源	38
WINDOWS2000 创世纪花园	40
大宁家园	41
上海春城	42
叠彩人家·万兆家园	43
达安花园	44
瑞虹新城	48
天安花园	49
虹桥首府·东苑怡和园	50
蝶恋园	52
虹桥新城	54
香港新世界花园	55
上海花城	56
世茂滨江花园	57
嘉里华庭	58
上海康城	60
联洋花园	62
龙华旅游城	63
现代律感·乾清园	64
强生花苑·剑桥城	66
同济香阁里拉	69
文化佳园	70
新时代花园	74
爱里舍花园	76
西郊华城	77
传世钻石·徐家汇花园	78
海上花园	79
新金桥·阳光欧洲城	80
郑州21世纪居住社区	81
樱缘	82
中远两湾城	84
南昌千禧·颐河园	86
合肥梦园小区	87
福州天元花园	88

金陵家天下	90
杭州国信·翰林花园	93
南昌御锦城	94
昆山凯悦城市广场	96
昆山爱河	98
颐景园	99
沈阳紫荆花社区	100
无锡生活大师	102
常州丽景花园	104
常州世纪明珠园	105
万安·秀水山庄别墅郡	106
上海春天	112
四季同仁大厦	115
大连欧洲小镇	116
汤臣高尔夫花园	118
上海之窗·御景园	120
杭州阳光地带	122
黄浦投资大厦	123
宁波中山华庭	124
昆山阳明会所	125
上海城市规划展示馆	126
合肥世纪阳光花园	127
京东新区·东方比华利花园别墅	128
永和新城·物华园	131
杭州东方苑	132
杭州维也纳春天花园	133
华敏世纪广场	134
奥汀宫廷别墅	135
上海领秀·爱建园	136

中国城市规划设计 & 模型

138

Urban Planning of China, Design and Model

南汇惠南新城	140
松江新城	143
上海市太平桥地区规划	146
南汇科教园区	149
黄兴绿地	150
上海新江湾城	152
上海佘山国家旅游度假区	154
杭州乐园	156
上海华泾镇总体规划	157
上海徐汇区总体规划	158
海南博鳌旅游度假区	160
宁波高等教育园区	162
上海市内环线城区总体规划	164
上海市五角场城市副中心	168
浦东外高桥港区	169
江苏省吴江市总体规划	170
浦东联洋新社区	171

中国建筑设计 & 模型

172

Chinese Architecture Design and Model

南京紫金山观景台	174
台州市会展中心	175
黑龙江省科技馆	180
福州保福花园	183
清华大学北区学生公寓	184
广东中山小榄镇歌剧院	188
北京万柳国际广场	190
广东东莞长途汽车站	192
温州市市级行政管理中心	196
奥林匹克花园	199
福州奥林匹克办公楼	200
嘉兴市华庭步行街	201
南通市新区行政中心	202
苏州移动通讯大厦	206
同济大学中德学院	208
南京世纪塔	210
温州仁济医学院	212
中国烟草博物馆	213
上海工行电子计算中心	214
上海证券交易所卫星通信地球站	218
浙江大学新校园规划	220
宁波三江六岸规划	222
海宁体育馆	225
北京钓鱼台国宾馆芳菲苑	226
漳州体育中心	230
广州生物岛	231
上海中国银行室内	232
上海家化科研中心	234
长春亚泰富苑	236
中国财政博物馆	238
上海电话大楼	242
西湖文化广场	244

建境工园室内

248

The Interior of Jiangning Working Park

后记

252

P o s t s c r i p t

Foreword

Making model is an important way to express the design of a building, even in these days when computer technology based digital graphic can done almost everything in design expression, nothing could take the place of architectural modeling. Architectural modeling, with it's unique aesthetic characteristic and the none-matching ability of space expressing, provide people with live space experience. One can touch and feel a model, as a complementarity of 2-dimension graphics, building models could give a more intuitionistic feelings on location, mass, scale, structure, materials etc, which could help people to understand a building better.

Early as the beginning of 14th century, the Italian Renaissance scholars had started to use model to promote the communication between owners and architects. Building models even can express the relationship between viewers and objects, abstract the complexity of real buildings for an easy understanding through the formation of solid and void space. Building models can transfer the experience on real space into pure theoretical or ideal thoughts to expose the nature of architecture. During the long history of architecture design, building models have been playing an important role all the time.

Like every kind of thinking ways, using models to help design is also limited and influenced by many factors. As a form of expression, modeling need more rational thoughts: geometry, grid, scale, theme, even the axis should be considered before making a model. The word "model", in it's Latin origination means "little scale" (Modellus), is considered as a token of the whole building. On the contrary, Modus means to unite the building through a little unit. Basic on such idea, Euclid's rational architectural view influenced the architectural modeling deeply and intensively.

Architectural modeling had got out of it's original character as soon as it came into being. As an active form of arts, although the main need for it is not more than an idiographic projects.

Get rid of all those attachments on architectural modeling, i.e, social, financial, functional actors, building models attract people by their mass and space, materials etc. This is the secret of architectural modeling, People need models, need cutting and attaching. To make a model is a kind of exploring, a progress, finally leads to a formation, a space with or without any limitation and boundary. A successful products always contains a kind of atmosphere or, another word, a kind of artistic conception, give people strong impression. I think this is also the Jian Jing Modeling Company's pursuing.

Jian Jing Modeling Company is an active and excellent architecture modeling company. It is made up of qualified workers and equipped with highly developed technology. This outstanding group has already finished many projects ranged from urban planning, architecture design etc. This book exhibits their achievements in recent years. But one point must be clearly stated is that, architectural model is not equal to architecture. The relationship between them could be thought as the relationship between water and boats. Water can support boats while it also can submerge the boats. Here I hope this company could make progress continually, producing more perfect models for both owners and architects, for both professions and the mass group, for both idea and reality.

Dr. Wang Lu

Vice-Professor of the School of Architecture, Tsinghua University
Chief editor of World Architecture

前言

建筑模型是建筑表现的重要手段,即使今天有以电脑技术支撑的建筑表现出神入化,也替代不了建筑的模型表达。建筑模型,以其独特的美学品质以及实体和空间的塑造力,为人们提供如实的图景,不但可以在视觉上加以感知,还可以被触摸。作为二维图形表达的一种补充,模型在位置、体量、比例、结构、材料诸方面能给人更为直观的感受,人们不仅可以在一个固定的视点静观,还可以多方位地漫游,把握建筑的整体。

早在14世纪初意大利文艺复兴时期人们就开始以模型来表现建筑以助于设计师与业主之间更好地沟通,建筑模型往往还用以表达主客体之间的关系,通过实体的和空间的构成形式,对在现实世界中纷繁复杂的关系加以抽象和提炼,完成由对现实的观点和体验向一个纯粹的理论性的或理想化世界的跳跃,凸现建筑的本质特征。在建筑历史的漫长长河中,设计在构思、成形、建造诸过程中都有模型的作用。

就象任何一种形式的思维,借助模型推敲设计也会有意无意地受各种因素的影响,在模型表达上,理性的思考占据重要地位,几何性、图式、格网、比例、主题,甚至轴线等往往被首先考虑。模型(Model)一词拉丁文指小尺度(Modellus),是建筑整体的象征,恰恰相反,模数(Modus)则是通过一种度量单位对建筑部分的统一,基于这种思考,欧几里德式的理性建筑观对模型制作影响深远。

建筑模型从一诞生起就开始从其原型性格中游离出来,作为一种自主的艺术形式,虽然其产生往往因于某个现实项目的设计,然而实际工程的模型化和建筑模型的真实化一直交织并行伴随着建筑历史的演进,建筑模型制作要考虑很多因素,作为一种实体造型,要考虑其尺度,模型本身和可能建成的实物之间的关系,创造一种可见的能被人感知的特有境界。要对可能建成的建筑在空间、结构、构造、功能、技术、材料及形体塑造上仔细推敲,不但使建筑师自己满意,还要被业主和决策者以及公众所认同。

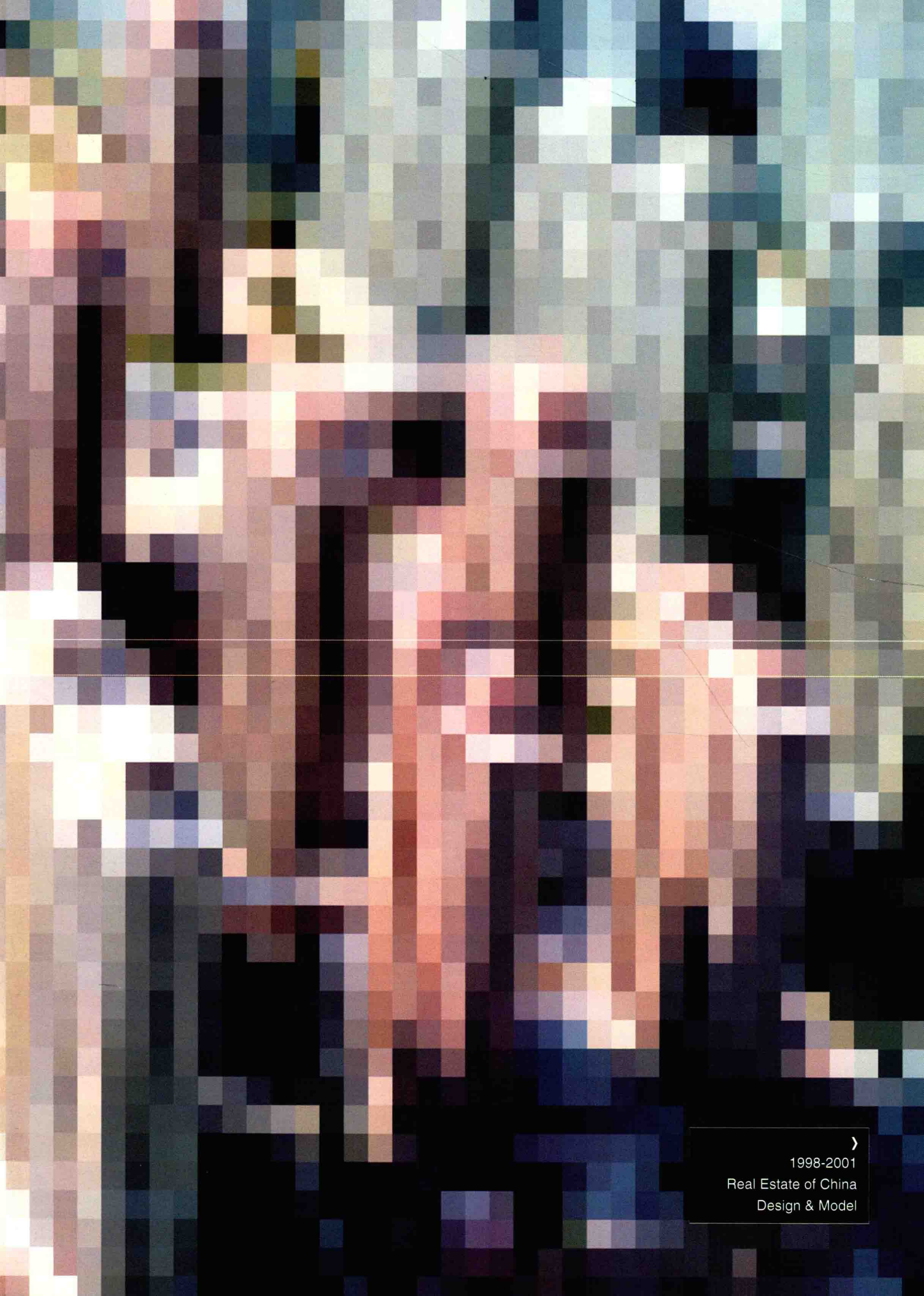
剔除所有附加的如社会、经济、功能等因素,模型以其形体与空间、材料,其实体性,以及各自彼此的体积关系,表面处理夺人耳目。这也是模型制作的奥妙所在,就象所有的形体塑造,模型产生于一个特殊的制作过程,人们要塑形,因而要剪切,要添加,在适宜与多余之间,在疏密多少之间,是一种探索,一个过程,最后产生一个形体,一个在空间中划定这种形体的介于有无之间的边界,所有感官都由该表面形成的效果所刺激,成功的作品会蓄扬一种气氛或者说一种意境,给以强烈的感染力,我想,这也是建境公司的追求。

建境建筑造型公司是一个富有活力的优秀的专业建筑模型公司,拥有高素质的专业技术人员和高科技的支持,他们以模型建艺造境,在城市规划、建筑设计、地产项目诸方面完成了大量高品质的模型,这本书集中体现了建境公司近年来的成就。然而有一点要澄清,建筑模型不等于建筑,两者的关系某种程度上可类比为舟与水,水能载舟亦可覆舟,建筑模型既可以建艺造境,营建人类理想中的伊甸园,也可以像特洛伊木马一样致人于困境。祝愿建境公司不断进取,在业主与建筑师之间,在专业与大众之间,在理想与现实之间塑造更精美的模型。

王路 博士
清华大学建筑学院副教授
《世界建筑》主编



1 9 9 8 - 2 0 0 1 中 国 房 地 产 设 计 & 模 型



1998-2001

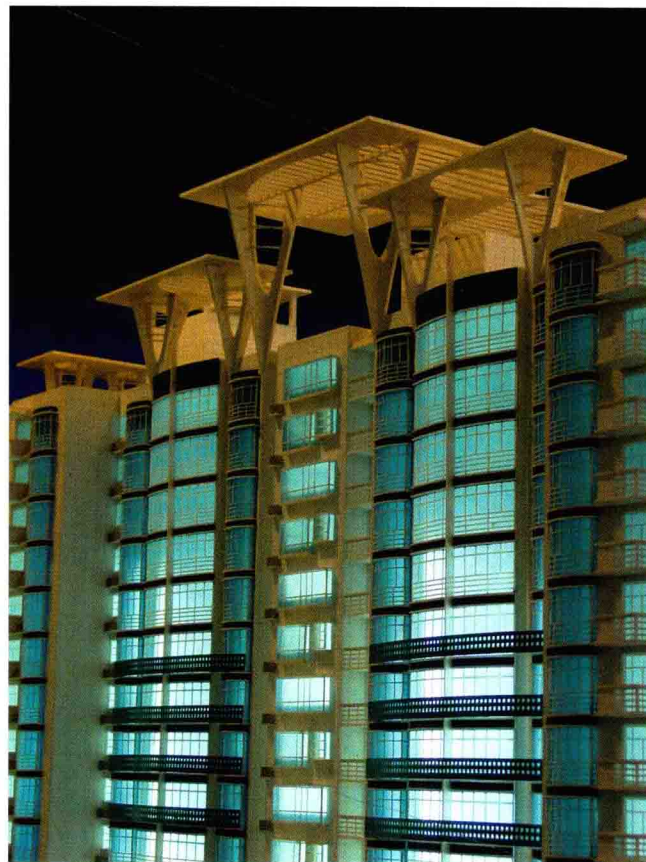
Real Estate of China
Design & Model

DESIGN 虹口现代公寓

HONGKOU MODERN
APARTMENTS

上海鹏欣集团
Shanghai Pengxin Group





一座会呼吸的时代玻璃之城

Inter-home 时尚的外立面令人叹为观止。挑空近 30 米双拱门，中空隔音玻璃外观，局部铝板线条装饰……时尚现代的建筑风格在众多传统的住宅面前脱颖而出，通透的拱门设计让建筑能够充分地自由地呼吸，线条简洁明朗的外观设计让整幢建筑洋溢着现代、简约的时代精神。

日光、灯光和不锈钢，恰如一场巧夺天工的自然盛宴。庭园不同层面的划分别出心裁地使用不锈钢作为载体，和灯光巧妙结合，捕捉并反映了社区的氛围、光线和透明度，建筑在强烈的阳光下闪烁，与黄昏的橙红色相交融，在阴蒙的晨曦里微呈灰色，表现出简洁硬朗的性格，现代感十足。

A Breathing glass city

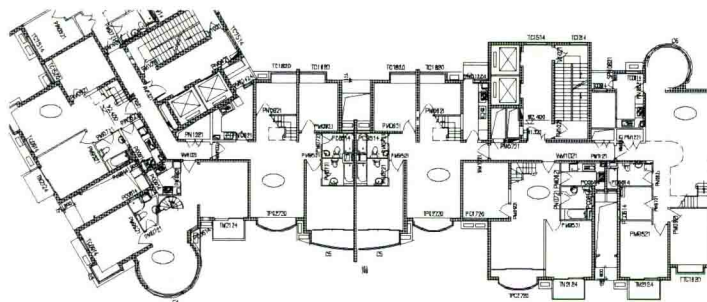
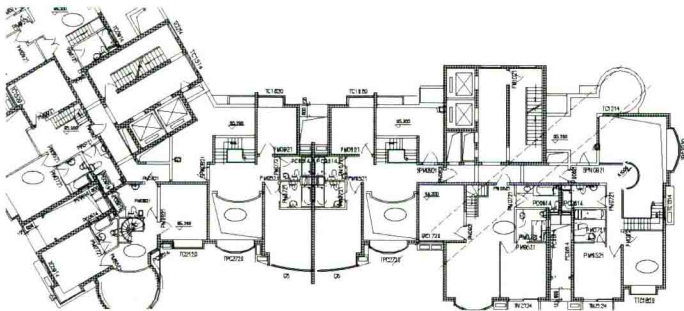
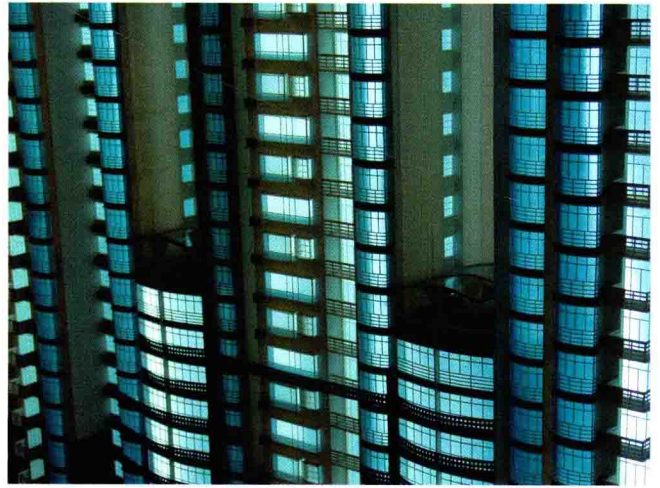
Its modern impressing look: 30 meters high double arched door, sound proof glass exterior and aluminum strip decoration, all makes it outstanding among many traditional buildings. Transparent arched doors seem to allow the building breath free and complete. Its simple and bright exterior design is a representation of the modernism. Sunlight, lamplight and stainless steel match each other harmoniously. Steel structure filled with lamplight, succinct and strong. They catch and express the community's amenity, light and transparency—glittering in the sun, blended with the orange in the dusk, and turns into light gray in the early dawn.



阶梯式景观中庭。三种层次万种风情

一进社区的水晶大门，就会发现这里的庭园景观与众不同。人车完全分流，景观步步高升。发展商一边盖房，一边营造出起伏坡地蒔花植草。沿香阶花坡建造了一座中央水舞喷泉广场，并以此为发散点，左右各建有儿童游戏区和钢韵水园。以渡水石阶为过渡，不锈钢为载体，地面再度抬高30公分来营建喷泉水池和大片银杏树林。透明喷泉底座与四季变幻、旭日波光一同诠释着自由的生活。水波凌空而下，浓荫落地成金。刚柔并济的现代铁艺，被时尚感敏锐的景观大师移植到社区庭园围墙上。浑厚刚硬的铸铁，锻造出简洁艺术的几何图形。无限与有限无形与有形之间的意念突破，给现代社区注入了可亲可近的人文关怀。

Terrace landscape, three layers, tens of thousands expressions.
Inside the crystal gate, pedestrians and vehicles are separate, layers elevate landscape, buildings and plants are growing at the same time. Along the flower terrace is a central fountain square, with children's playground and steel water park on both sides of it. Transparent fountain base mingles the changes of the four seasons and that of the sunlight. The fence of the garden is a piece of iron art. Simple and vigorous geometric patterns express the relations between infinite and finite, intangible and tangible.



发 展 商: 上海恒新房地产开发有限公司

景观设计: 美籍华裔景观设计大师 William Kan

物业顾问: 新加坡怡安物业

物业管理: 上海鹏欣物业管理有限公司

行销企划: 上海聚仁物业咨询有限公司

效 果 图: 水晶石

Developer: Shanghai Hengxin Real Estate Development Co. Lt.

Landscape Design: William Kan (Chinese American)

Property Advisor: Singapore Yi'an Property

Property Management: Shanghai Pengxin Property Management Co. Lt.

Marketing Planning: Shanghai Juren Property Consulting Co.Lt.

新天地广场

NEW WORLD PLAZA

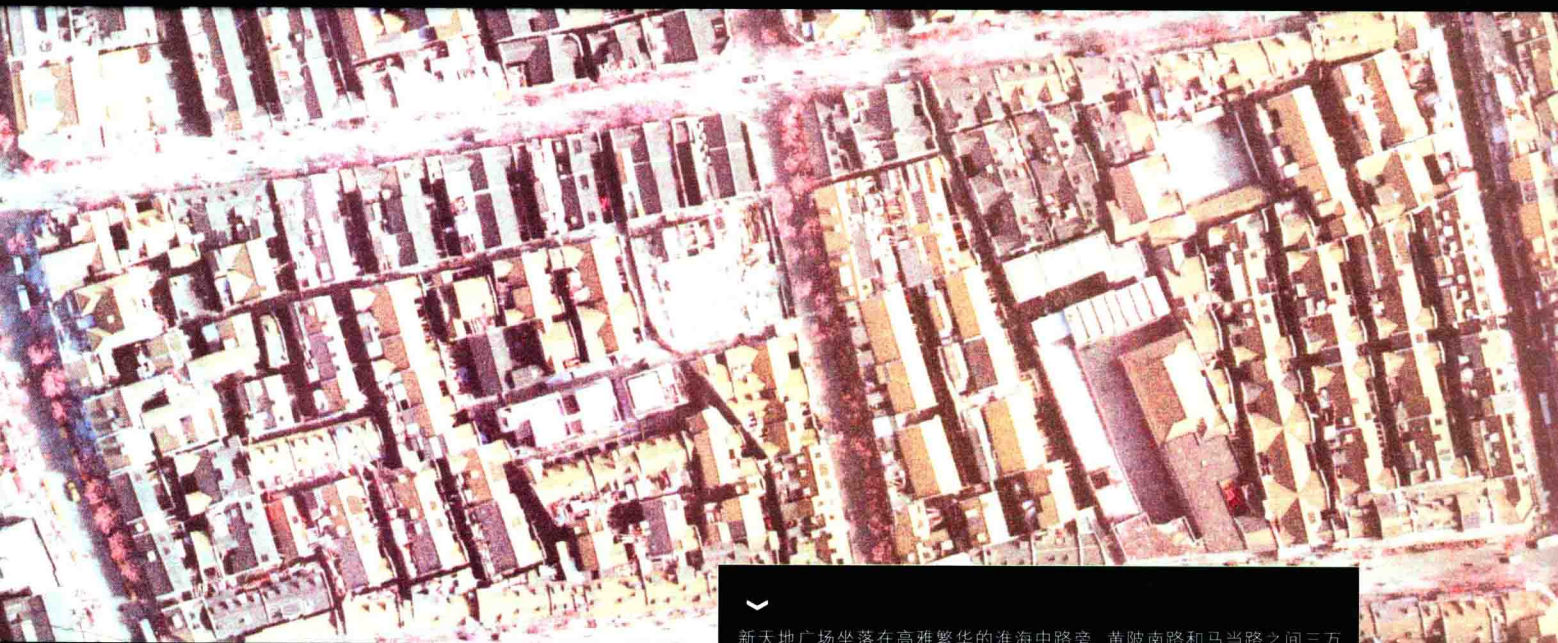
香港瑞安集团
Hong Kong Rei'an Group



建筑设计:
美国 WOOD/ZAPATA (Boston) 设计事务所
日建 (新加坡) 国际设计事务所
同济大学建筑设计研究院
Architecture Design:
USA WOOD/ZAPATA (Boston) Design Office
Rijian (Singapore) International Design Office
Architecture Design Institute of Tongji University







新天地广场坐落在高雅繁华的淮海中路旁，黄陂南路和马当路之间三万平方米的地块上，毗邻黄陂南路地铁站和南北、东西高架路的交汇点。这个项目以中西合璧、新旧结合为基调，将上海传统的石库门里弄与充满现代感的新建筑群融为一体，创建集历史、文化、旅游、餐饮、商业、娱乐、住宅和办公等多功能的特色小区。新天地广场是以太平桥地区总体规划作为依托，以石库门里弄建筑作为基调，以满足未来多功能特色服务业为目标，进行规划。在北块地块，围绕“一大”会址，以保护、维修为主，基本上完整保持里弄建筑的空间结构。在南面地块以新建现代建筑为主，以兴业路和南北向的步行街为主轴，完善整个新天地广场的规划结构。

The New World Plaza is located between the fancy busy Huaihaizhong Road, Huangpunan Road and Madang Road, close to the subway station and the major intersection of south-north and east-west elevated roads. The whole planning is to integrate Shanghai's traditional Shikumen lanes and modernized new buildings and create a good combination of the Chinese and the Western, the old and the new. It will be feature area rolling history, culture, tourism, dining, commerce, recreation, housing and office into one. The plaza will be built within the entire Taipingqiao District, with Shikuman lanes as its background, and designed to meet its multifunction service purposes. The northern part will be protection and maintenance of cultural relic mainly the site of the "1st National Conference of CPC", and to keep the original architectural style of the old lanes. The southern part will be the construction of the modern buildings, with Xingye Road and the north-south walking street as its artery.





now thru
July 15th

BRIGHT STAR C

PARK 2000

ANTIQUES

新天地建成后石库
门电脑合成效果图
Computer Graphic



本杰明伍德（顾问建筑师）说：“新天地”顾名思义，新的天，新的地，意味着一个崭新的生活世界。在大兴旧房改造期间，上海发生了很大的变化，让一些老式建筑留存下来是很有意义的。石库门弄堂就记载着上海一个半世纪的历史。如今，“新天地”通过保留石库门弄堂建筑道出了一个有关老上海的故事。它特有的建筑模式是罕见的，而它只属于上海。”

Benjamin Wood, architecture advisor: The New World, as its name implies, new sky, new ground, a new life in a new world. During the period of rebuilding the old houses, great changes have taken place in Shanghai. It is very significant to maintain some old-style building. Shikumen lanes record one and a half century's history of Shanghai. Today, The New World Plaza tells us a story of Old Shanghai through its protection of Shikumen. Its special architectural mold is rare, and it belongs only to Shanghai.