

四川美術學院裝飾設計系

教師色彩名集



ALBUM OF THE TEACHERS' COLOUR PAINTINGS FROM DECORATION
AND DESIGN DEPARTMENT OF SICHUAN FINE ARTS INSTITUTE

四川美術學院裝飾設計系

教師色彩畫集



ALBUM OF THE TEACHERS' COLOUR PAINTINGS FROM DECORATION
AND DESIGN DEPARTMENT OF SICHUAN FINE ARTS INSTITUTE

四川美術出版社
SICHUAN ART PUBLISHING HOUSE

前言

當代享有盛譽的我國著名工藝美術教育家和色彩畫家李有行先生，生前曾執教于四川美術學院染織美術專業，即現在的裝飾設計系。用畢生之精力總結和創造了一套完整的色彩寫生教學體系，在全國高等藝術院校的色彩寫生課中獨樹一幟，直接或間接地影響了一大批水粉畫家。

李有行先生的水粉寫生，既吸收了西方光影造型的理論，又融匯了深厚而純樸的中國書畫藝術之風韻。其作品無論是花卉，抑或是風景，始終充溢着蓬勃的生機，對自然美的提煉，嫺熟的色彩技巧，已達到了爐火純青的藝術境界，形成了具有東方民族氣質的色彩造型語言，無愧為著名的色彩大師。

這本畫冊編選了李有行先生三幅色彩遺作《熱帶蕨草》、《紅杜鵑》、《朝天門碼頭》，使我們可以領略到這位前輩大師的藝術造詣，其中也包括了裝飾設計系十六位教師的七十余幅色彩作品，既反映出這一體系的傳承關係，也體現出每位作者獨特的藝術個性，就總體而言，代表了當前該系老、中、青年教師色彩創作的一般風貌。

直接師承于李有行先生的鐘茂蘭教授，由于長期致力于裝飾色彩的研究，其作品以嫺熟的技巧和深厚的藝術功力見稱于畫壇。尤其是近期作品，生活氣息濃鬱，色彩概括典麗，由傳統的寫生方法轉化為寫生的多元化表現；曾兩度赴法國舉辦個人色彩作品展覽，受到很高的評價。張仁貴教授的水彩畫，則運用熟練的技巧將我國傳統繪畫中的筆墨、氣韻相融合，其清新、高雅的藝術格調于畫面增添了濃重的詩意。

在中青輩畫家中不少作品充溢着新的活力，如黃嘉、雷瀟智、王新福、馬蓉等教師的作品，在畫法上均有新穎獨到之處，顯示出一種很可貴的探索和創造精神。

如期匯編成冊，既是對該系教師色彩創作的積極倡導，也為該系色彩寫生課被評為省重點課程創造良好的學術氛圍，以推動其進一步發展和繁榮。

余強

一九九六年元月三十日

PREFACE

Professor Li Youxing has the high reputation as master of colours and educator on arts and crafts. In his lifetime, he had been teaching textile specialization in Sichuan Fine Arts Institute(now Design Department). With all his efforts, he established his own peculiar teaching system on painting from life with water – colours, which was original in art institutes in China, and had great influence on groups of water – colour artists directly or indirectly

The water – colours by Prof. Li Youxing combined the western theories of light and shadow with the charm of profundity and purity of traditional calligraphy and painting art. His works are full of vitality. No matter it is flower or landscapes, it is always the extracts of the beauty of nature, expressed with such skills that it always reaches the top artistic realm. Meanwhile, he forms his own language of colours with strong oriental characteristics. He deserves the fame of master of colours.

In this catalogue, the three posthumous works by Prof. Li Youxing – – – "Red Azalea", "Tropical Fern" and "Chao Tianmen Dock" – – – will bring us back into the artistic world of him. We also collected 75 water – colours by 15 teachers in Design Department, as a presentation of the continuation of Prof. Li's system as well as the unique artistic characteristics of their authors. Generally speaking, the works in the catalogue are a representation of water – colour creation by teachers of different age groups in the department.

Prof. Zhong Maolan, who learned directly from Prof. Li, endeavors to make researches on decorative colours, and enjoys high reputation in art circle for her matured skills and profound artistic attainments. Her recent works, in particular, are vivid reflections of life described in elegant colours. She turns the traditional way of painting from life into multiplied expressions of it. She twice made her personal exhibitions in France and was highly remarked. The water – colours by Prof. Zhang Rengui emphasize the skills and the combination of brushwork and charm of traditional Chinese painting art, thus makes his pictures poetic for the freshness and elegance.

The works by younger teachers are full of new vitality. The newness of their works brings out their researching and creative spirit, as in works by Huang Jia, Lei Hongzhi, Wang Xingfu and Ma Rong.

Such a catalogue is made in the purposes to encourage the water – colour creation of the teachers of the department, and to create an academic atmosphere for "Painting – from – Life Class" with water – colours, which was listed into "Important Subject of the Province", so as to push it into further development and prosperity

Yu Qiang

Jan 30, 1996

目 錄

李有行：①熱帶蕨草(40×56cm)

②紅杜鵑(40×56cm)

③朝天門碼頭(40×56cm)

鐘茂蘭：④睡蓮(44×62.5cm)

⑤春潮(57×58cm)

⑥夏韻(75×76cm)

⑦紅牡丹(39×53cm)

⑧黃罌粟(50×53cm)

⑨藍綉球(36×51cm)

⑩金色旱蓮(36.5×54.5cm)

⑪雨中情(44×63cm)

張仁貴：⑫菊(54×79cm)

⑬黃山(54×79cm)

⑭山野(54×79cm)

⑮野芋(54×79cm)

⑯美人蕉(39×54cm)

付克輝：⑰月光(39×53cm)

⑱秋色(39×54cm)

⑲月季(30×31cm)

⑳菊花(39.5×50.5cm)

㉑落日(38×51cm)

李 強：㉒靜物(56×75cm)

㉓向日葵(56×75cm)

黃 嘉：㉔蠟染與土陶(51×61cm)

㉕山的印象(之一)(39×39cm)

㉖山的印象(之二)(39×39cm)

㉗白瓷盤(之一)(30×50cm)

㉘白瓷盤(之二)(30×50cm)

㉙櫻桃(50×70cm)

雷鴻智：㉚彩玩(60×65cm)

㉛瓶花(60×65cm)

㉜紅果實(60×92cm)

㉝靜物(62×83cm)

㉞青鳥(80×100cm)

㉟韻(145×280cm)

余 強：㊱黃桷樹(39×54.5cm)

㊲荷塘(60×80cm)

㊳花卉(之一)(44×60.6cm)

㊴花卉(之二)(44×59.5cm)

繆根生：㊵秋葉(39.5×54cm)

㊶菊(39.5×54.5cm)

㊷紅楓(39×54cm)

㊸廣東玉蘭(39.5×52cm)

㊹柱頂紅(39.5×54cm)

馬 蓉：㊺遠方的雲(53.5×53.5cm)

㊻靜靜的竹籃(47×51.5cm)

㊼手工袋(之一)(46.5×56.5cm)

㊽手工袋(之二)(46×75cm)

㊾人造花(46×48cm)

趙 宇：㊿靜物(36×39cm)

①綉球花(39.5×54.5cm)

②米亞羅(39.5×54.5cm)

王新福：③無花果(40×60cm)

④黑影(60×80cm)

⑤旱蓮(40×60cm)

⑥盤子和梨(40×60cm)

潘召南：⑦喘息的小屋(39×55cm)

⑧木屋一角(39.3×54cm)

⑨吹奏的人們(20×35cm)

⑩一片淨地(50×75cm)

⑪小船(38×41cm)

蘇永剛：⑫靜物(之一)(54.5×79.5cm)

⑬靜物(之二)(54.5×79.5cm)

⑭靜物(之三)(39×53cm)

⑮靜物(之四)(54.5×75cm)

厲宏偉：⑯年輪(26×38.3cm)

⑰空間(27.5×38cm)

⑱手套(27×39.2cm)

⑲焊槍(32.5×39.3cm)

黃 耘：⑳靜物(47.5×67.5cm)

㉑玉潔(56×69cm)

㉒菖蘭與蘋果(53.5×76cm)

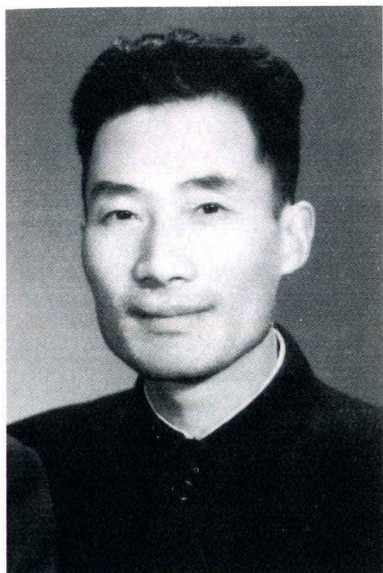
彭 誠：㉓高原之門(之一)(28×53cm)

㉔高原之門(之二)(30×53cm)

㉕高原之門(之三)(38×53cm)

CONTENTS

[illegible]



李有行

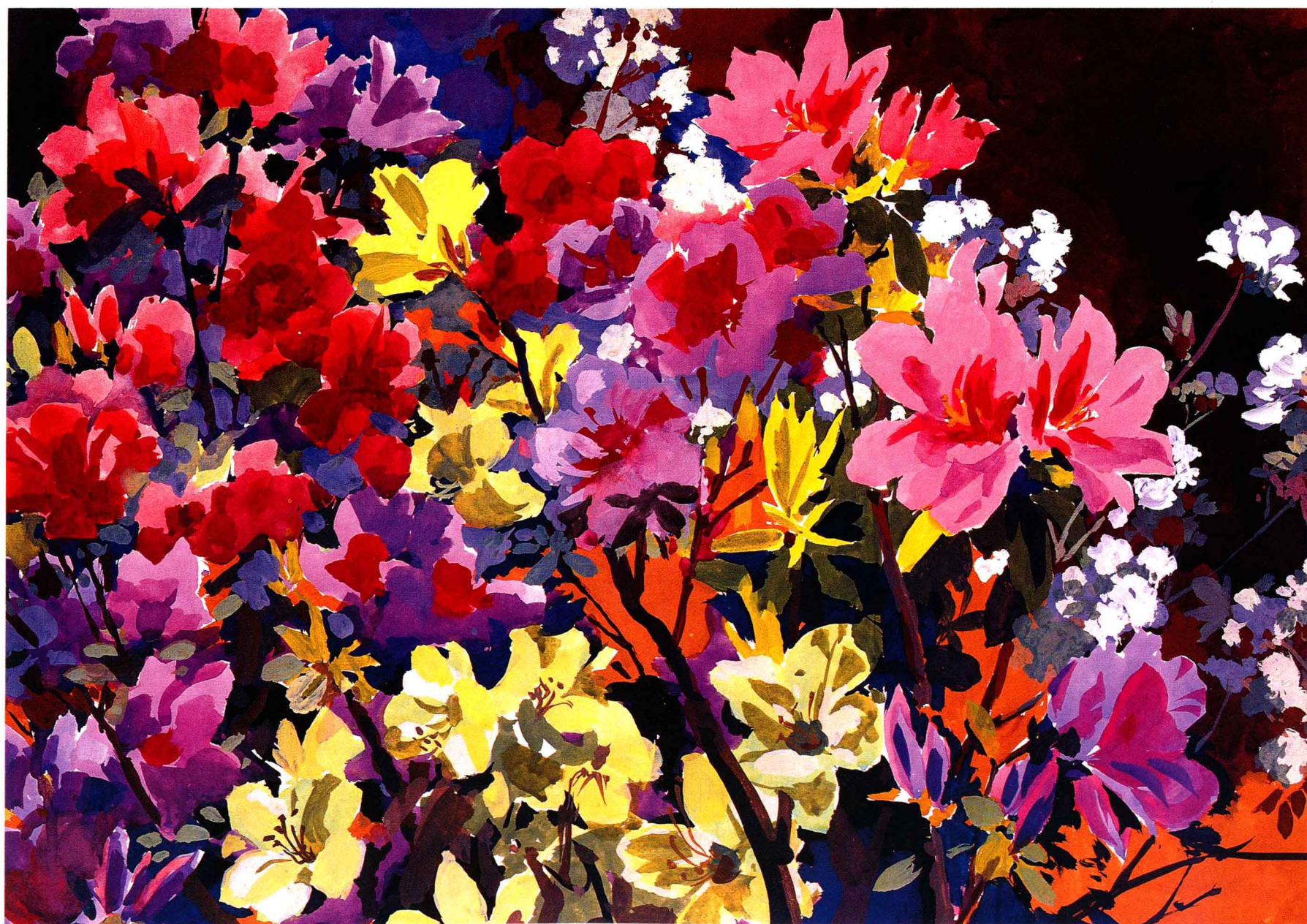
1905 年 1 月生于四川梓潼縣
 1926 年赴法國里昂美專學習
 1936 年任北平藝專圖案系主任
 1939 年創辦四川省藝專，任
 校長、教授。
 1956 年任四川美院教務主
 任、染織專業教授。
 1982 年逝世

Li Youxing

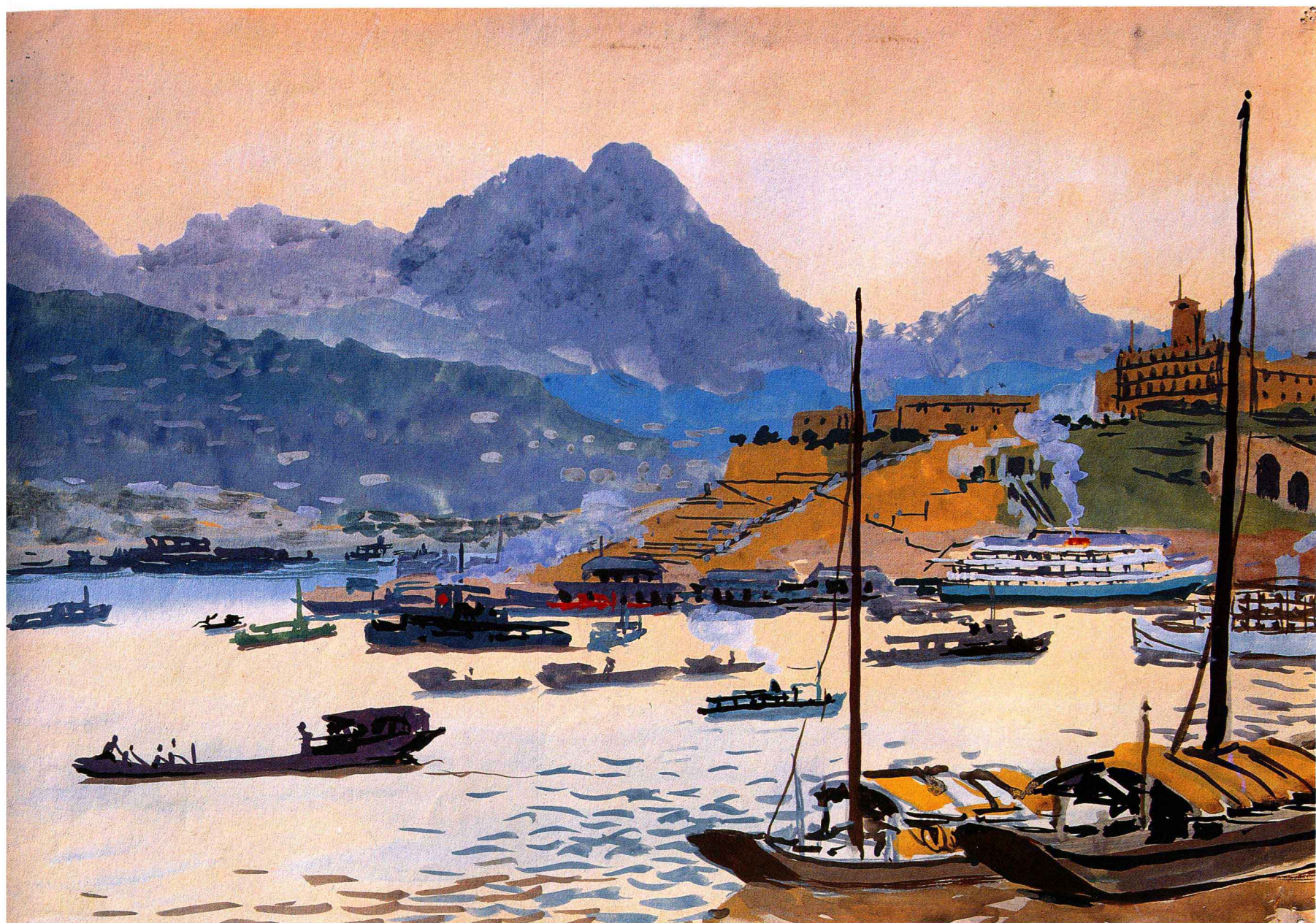
born in Jan. 1905, Zitong,
 Sichuan
 died in 1982
 1926, studied in Lyon Art In-
 stitute, France
 1936, dean of the Pattern
 Department of Beiping Art
 College
 1939, set up Sichuan Art
 College, headmaster and
 professor of the school
 1956, dean of Studies and
 professor of textile special-
 ization of Sichuan Fine Arts
 Institute



① 熱帶蕨草 (40 × 56cm)
 Tropical Fern



② 紅杜鵑 (40 × 56cm)
Red Azalea



③ 朝天門碼頭 (40 × 56cm)
Chao Tianmen Dock



鐘茂蘭

1937 年出生于成都
1958 年四川美術學院工藝
系染織美術專業畢業
現任四川美術學院裝飾設
計系主任、教授。

Zhong Maolan

born in 1937, Chengdu
1958, graduated from Art
Crafts Department of
Sichuan Fine Arts Institute,
majoring in textile art
at present, dean and pro-
fessor of Design Depart-
ment.



④ 睡蓮 (44 × 62.5cm)
Water Lily



⑤ 春潮 (57 × 58cm)
Spring Tide



⑥ 夏韵 (75 × 76cm)
Summer Melody



⑦ 紅牡丹 (39 × 53cm)
Red Peony



⑧ 黃罌粟 (50 × 53cm)
Yellow Poppy



⑨ 藍綉球 (36×51cm)
Blue Hydrangea

⑩ 金色旱蓮 (36.5 × 54.5cm)
Golden Nasturtium



⑪ 雨中情 (44 × 63cm)
Melody of the Rain

