

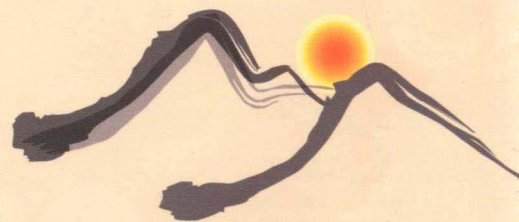


墨情

视觉陈设

# Ancient Charm of Ink Visual Display

古韵



未来文化 编



华中科技大学出版社

图书在版编目(CIP)数据

墨情古韵，视觉陈设 / 未来文化编. - 武汉 : 华中科技大学出版社, 2012.8  
ISBN 978-7-5609-8221-2

I. ①墨… II. ①未… III. ①住宅 - 室内装饰设计 - 图集 IV. ①TU241-64

中国版本图书馆CIP数据核字(2012)第201760号

墨情古韵——视觉陈设

未来文化 编

出版发行：华中科技大学出版社（中国·武汉）  
地 址：武汉市武昌珞喻路1037号（邮编：430074）  
出 版 人：阮海洪

责任编辑：王晓甲  
责任校对：赵慧蕊

责任监印：张贵君  
美术编辑：彭种玉

印 刷：利丰雅高印刷（深圳）有限公司  
开 本：990mm×1270mm 1/16  
印 张：19  
字 数：280千字  
版 次：2013年1月第1版 第1次印刷  
定 价：278.00元 (USD \$55.99)



本书若有印装质量问题，请向出版社营销中心调换  
全国免费服务热线：400-6679-118 竭诚为您服务  
版权所有 侵权必究





# 墨情古韵

## ——视觉陈设

### Ancient Charm of Ink Visual Display

未来文化 编



华中科技大学出版社

<http://www.hustp.com>

中国·武汉



# 目录 CONTENTS

博轩园现代中式风格 004  
The Modernized Chinese-Styled of Fuxuyuan

惬意东方 010  
Cozy East

港惠新天地现代中式样板房 016  
Sample Room with Modern  
Chinese Style of Ganghui New Land

凤山水岸 020  
Fengshan Waterfront

乐景园 024  
Happy Valley Garden

富春山居 028  
The Fuchun Mountain Resort

富通天邑湾样板房 032  
Futong Tianyi Bay Show Flat

意境——华府 038  
Mood — Hua Mansion

远雄样品屋 044  
Sample Room of Yuanxiong

姑苏世家洋房样板房 050  
Gusu Villa Show Flat

品禅之现代闲逸 058  
The Modern Zen Style House

嘉亨湾 066  
Grand Promenade

书韵 074  
Book Rhyme

乡居 082  
Living in Countryside



088 舍形悦影  
The Shape of House, the Shadow of Happiness

094 武汉拉菲中央首席官邸B型别墅示范单位  
Wuhan Rafi Central Chief Residence  
Type—B villa—Model Unit of Villa

100 净心、静心的自然生活美学  
Natural Life Aesthetics — Pure and Calm Heart

106 优山美地掬月  
Yosemite Show Flat

114 春江花月  
A Moonlight on the Spring River

120 金地澜菲溪岸  
Golden Gound & Lanfei Creek Bank

124 水墨印象  
Ink Impression

130 新东方主义  
New Orientalism

134 翠彩  
Green

140 广昌中式别墅  
The Guangchang Chinese Villa

148 联泰香域滨江  
Liantai Bank of City

154 城南天府世家D型样板房  
D Type of Sample Room in Chengnan Tianfu Shijie

160 赫里翁W-HOUSE  
Helion's W-House

164 写意东方  
Oriental Aesthetics





中源名苑13号楼东面F户型 170

Zhong Yuan Ming Yuan Building 13-F

雍容 176

Gracefulness

富力湾 182

Fuli Bay

中正川普样品屋 190

The Everlasting Architecture Show Flat

皇册家园 196

Huang Ce Jia Yuan

有容乃大 200

Capacity Makes Greatness

墨情空间 206

The Space of Inking Flavor

香江枫景 210

Xiangjiang Scene of Maple

江与城 214

Rive and Town

世纪之顶黄宅 218

The Mr. Huang's Residence

忆江南 224

Memory of Jiangnan

花非花，雾非雾 228

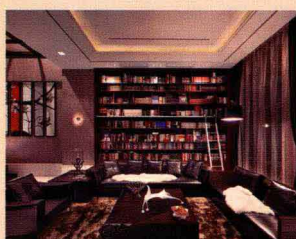
The Flower is Not That One and the Brume is not That One

晶华城三期样板间 232

The Model House of Regent III

序曲 236

Overture



242 倚绿窗

Sample Room of Shu Xiang Men Di

248 三峡陈公馆

Description of Chen Gong Guan in Three Gorges

254 书香门第样板房

Sample Room of Shu Xiang Men Di

260 中信泰富样板房

Sample Room of Zhong Xin Tai Fu

266 天伦誉海湾

Tranquil and Leisurely Taste

270 恬淡闲适的品位

Tranquil and Leisurely Taste

276 庄重中的闲逸

Idleness in Solemn

284 跨越时空的浪漫邂逅

Meeting Romantically in Time Travel

288 以视觉代言的中国风

An Visual Chinese Style

294 桃花源居

The Taohuayuan House

298 信义京华苑

Xinyijinghua Home



# The Modernized Chinese-Styled of Fuxuyuan 博轩园现代中式风格

设计师：陈贻、张睦晨  
设计单位：北京睦晨风合艺术设计中心  
项目地点：中国天津  
建筑面积：160平方米  
主要材料：木纹石、实木地板、  
麻质壁纸、石材马赛克、白色乳胶漆



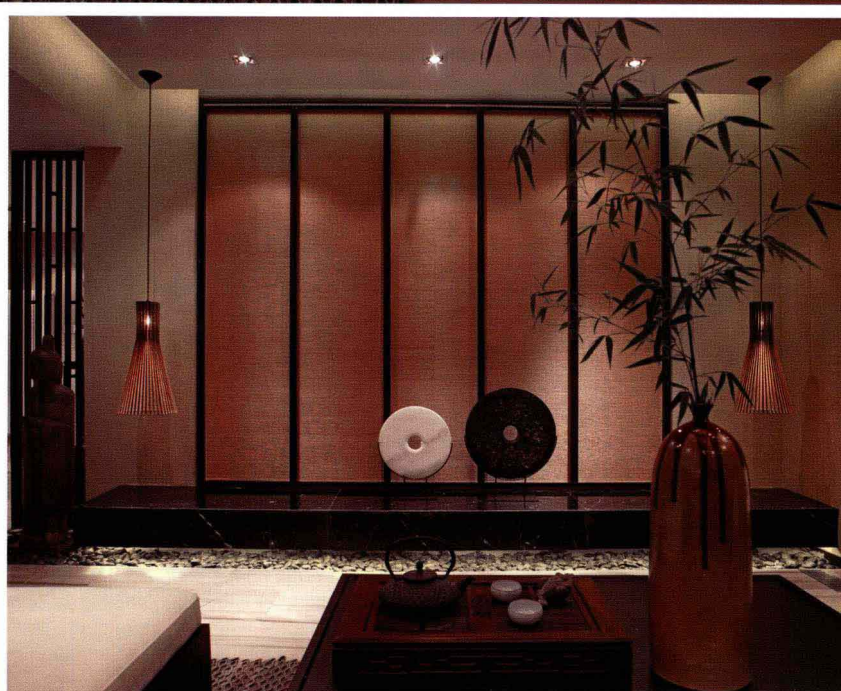
Life is the foundation of art creation. The meaning of the life could be known by people only if they consider the life as the progression of creating art and that of beauty-catching. Being take the inspiration of the past years, the real life shall be combined with the plants, the birds' s chirp, peace, holiday and leisure. Nowadays, the life is changed to be a nerving, fasting machine, and we are forced to face that. Even the decoration for our home are incline to chose the style of luxurious and complication to free us from the unhappy feelings on busy days. Is it what we rally want? We are all hoping that we can find a place in the city to return our hearts to a peaceful status. This is the life form Chen Yi and Zhang Xin are going to bring to us.

The designer made use of the sample house to supply a private place for the client relaxing his spirit and making friends. The area is aiming to promulgate the atmosphere of relaxation, comfortable and ease. When enter the area, we are accessible to the texture of green bamboos going the shadowy pave and the green

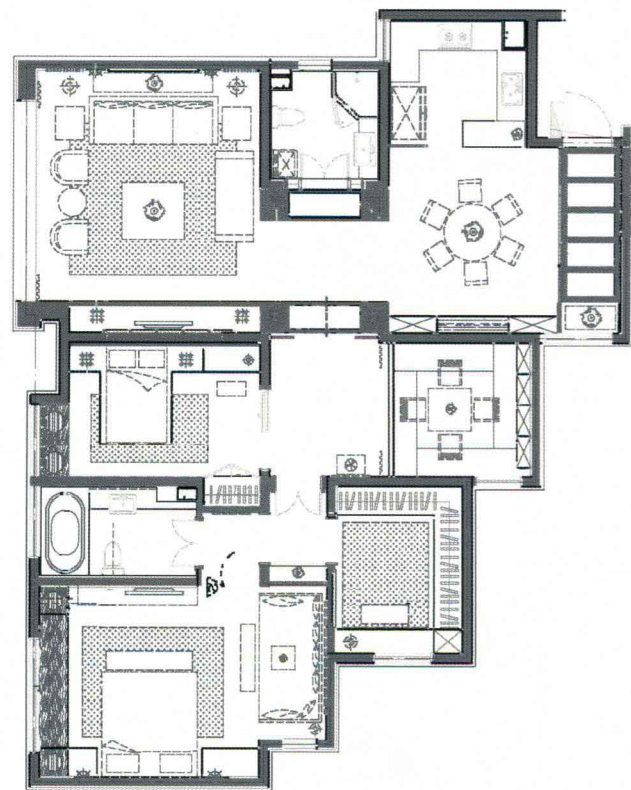
carrots touching the cloths, and can feel the atmosphere which is created by the wooden fences at both sides. The designing inspiration for the wooden fences comes from the bamboos. Chen Yi and Zhang Xin made use of the inspiration to design the fences' style. The paving stones and the bamboos bring a natural and intimated feeling to people. The ease and relaxation can be viewed, then the strong Buddhism aroma of the Orient World' s comes.

Being compared with the houses built recently, the newly Chinese style the sample house brings make people feel the peaces made by the differed sense of the time. The designer tried to create time' s beauties, said as farewell to the mundane world and exile self to the wide. The project of Chen Yi' s and Zhang Xin' s is fully satisfying the clients' interests on art and the sense of belonging. We can get the life status we used to envy, which is defined by the words as broaden, individualized, confidential, comfortable, elegance, and returning to the nature.









平面布置图



生活本身就是艺术创造的基础，唯有把生活当成艺术创造和审美的过程，才能彻底领悟生活的意义。追溯千古，真正的生活应该和植物、鸟语、度假、休闲等结合在一起。而现代的生活紧张、急促，我们都迫不得已地过着本不属于自己内心的快节奏生活，在室内的装饰风格上，也都追求奢华、繁琐的装饰风格来满足我们忙碌过后的不平衡感。但这是我们内心的真实向往吗？相信在这个繁华的都市里，我们都希望有一块地方，回归原始，沉淀心灵。这正是设计师陈贻和张欣想要带给我们的一种淡泊宁静的生活方式。

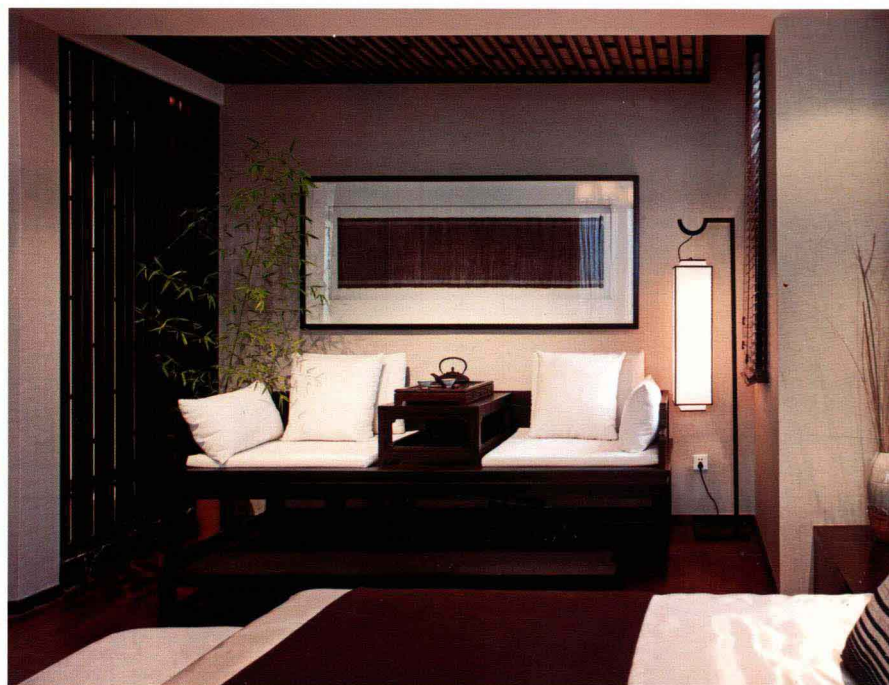
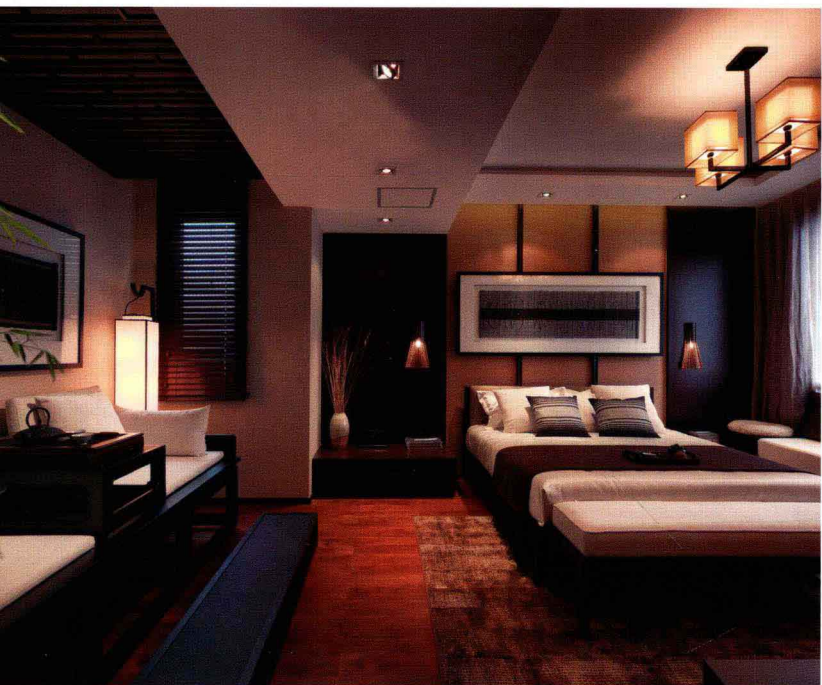
此项目样板间就是设计师为主人修心养性、收藏及会友所量身定做的私人场所。空间以传达轻松、舒适、放松的氛围为目的。推门而入，“绿竹入幽境，青萝拂行衣”，这全靠两旁的木质格栅所营造出的氛围。这个木质格栅的设计灵感来源于竹子，设计师陈贻及张欣借用竹节的形式，设计了这种木质格栅的样式。脚底的踏石和青嫩的竹叶给人一种自然亲切、平静放松的感觉，悠闲、随意的生活意境尽显眼底，浓郁的东方禅意气息随之而来。

与如今的一些洋房洋楼对比，这套样板间所传达出来的新中式风格，使人感觉历久弥新，我们能感受到一种时间差异感所带来的宁静，一种设计师所营造出的时间的美感。“离别繁华世，归隐山竹林”，陈贻和张欣力求通过我们的生活环境带给我们一种温暖、放松、安逸、祥和的感觉。陈贻和张欣这次带给我们的设计，充分满足了居住者的艺术情趣和归属感，带来一种我们曾经羡慕的生活状态：宽敞、个性、私密、闲适、幽雅、唯美和回归自然。

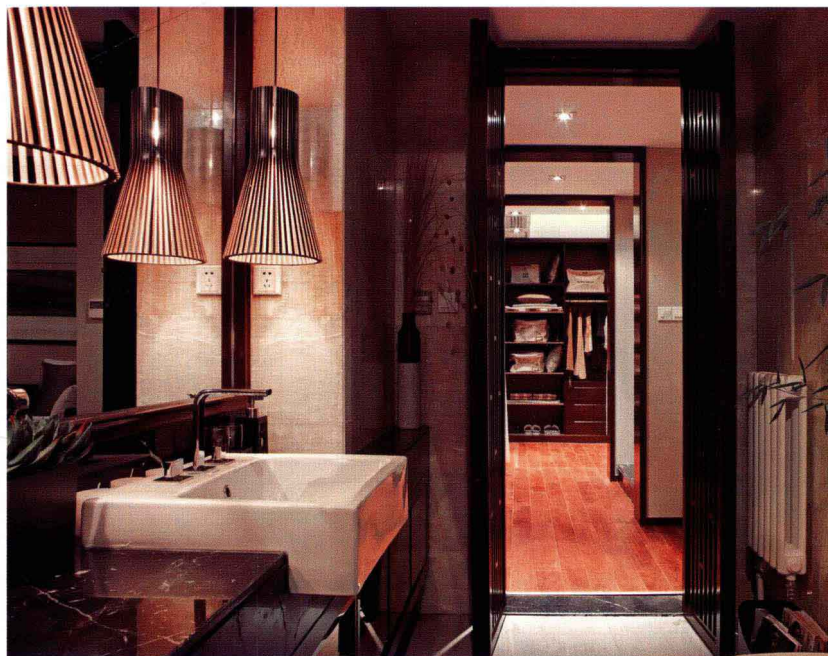
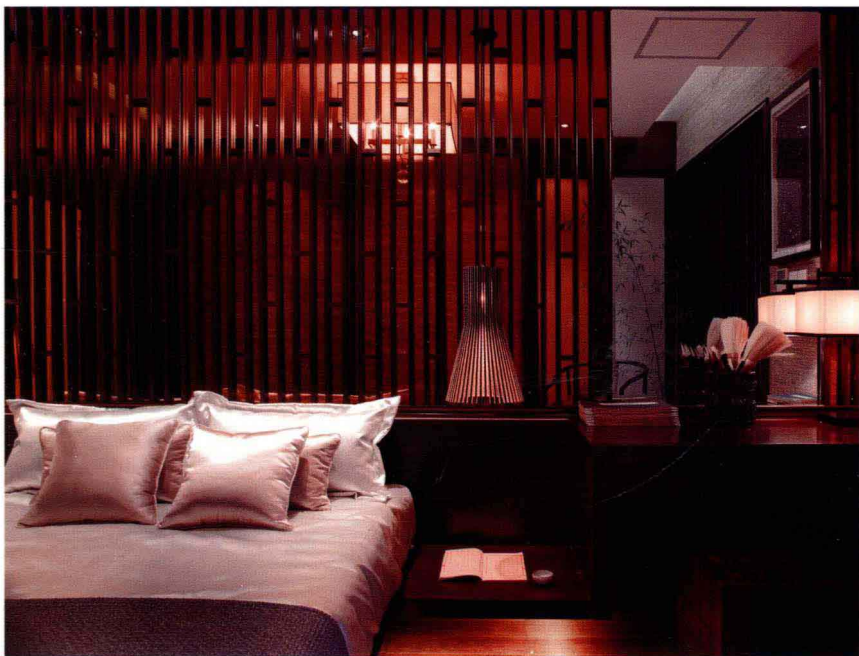














# Cozy East 惬意东方

设计师：殷艳明  
设计单位：深圳市创域设计有限公司  
项目地点：广东深圳  
建筑面积：130平方米  
主要材料：黑茶钢、黑茶镜、布纹墙纸、  
特种石材、影木、手绘壁纸



The so-called design of "new Orientalism", in essence, means quoting the traditional symbols in Chinese cultural life, and combining modern life spirit, the design concept and construction technology, in hope of illustrating the interior space, traditional culture and the owner's aesthetic attitude to life in the way of contemporary thought. Although the ancient and modern are in the line of succession, the desire is to seek the combination of two elements about "traditional" and "modern", still facing barriers of time and this may generate awareness and technical contradictions. This is the issue to be resolved in this case about the interior space design, but also a chance of innovational expression about interior space.

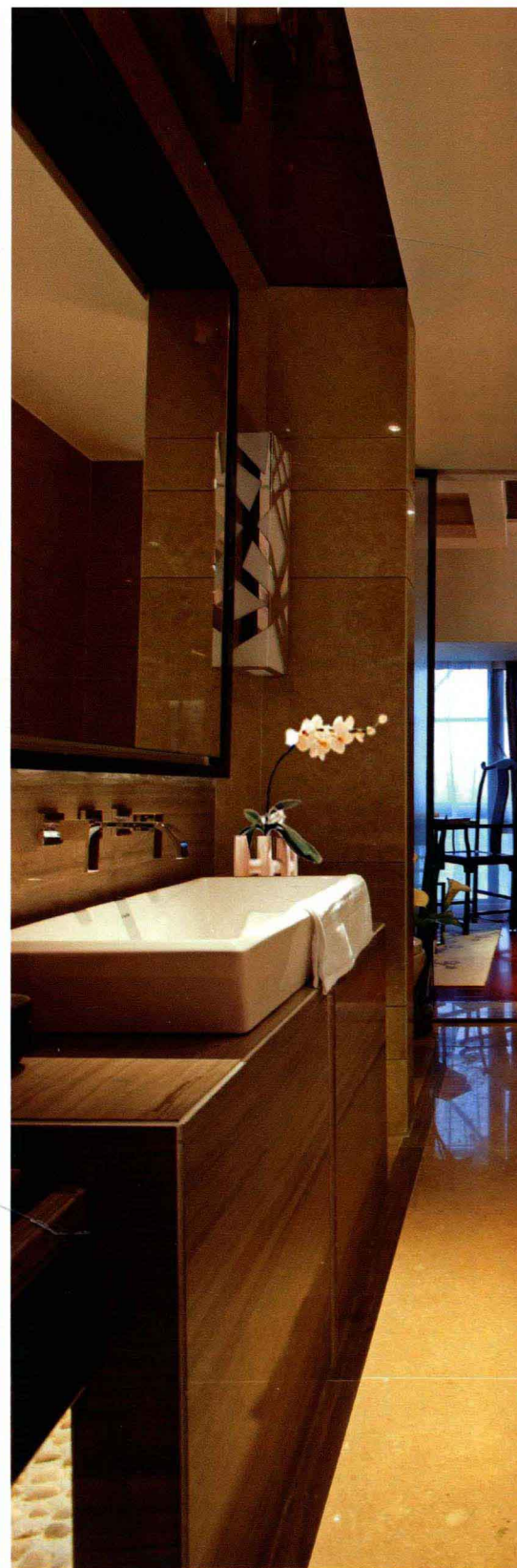
This case is located in downtown area of Shajing in Shenzhen City, closed

to the IRS, the living facilities are very completed, and transportation network is convenient, presetting the temporary residence for the successful people or business partners. From the aspect of geographical environment, modern city life gives convenience to these residential living units, but also adds a fast-paced psychological stress, can we keep our mind and heart pure in this noise and material world where we can completely relax and achieve a moment of self-return? Tracking back and finding a traditional culture may be a powerful tool for spiritual comfort. In the design concept, we abandon the traditional culture of the emperor and a family of magnificent luxury, but choose some traditional elements to combine with modern simplicity lines. A simple, elegant, natural, mood and peaceful life image is created through the innovation of color, mood and spirit.









Unit living area of this case is not big. In order to avoid the cramped life and perception, the designer breaks the traditional compartment bravely, and the original four bedrooms and halls are re-defined in spatial pattern and distribution to achieve a new stretch of space by open and through methods, and by using materials as partitions, then the space has been made use of to the most.

Selection of space, color and material is not complicated. Wood varnish is coating the wall with shadow, black mirror steel titanium and white ceiling is skirting, a large area of white, light wood color space forms a simple and neat block face, space is with a patchwork mix of continuity and flow. Groups of contemporary Chinese folding screen, some Chinese furniture and door frames, door pockets are with dark brown tone. Although not being emphasized too much, they can make the floating light colors calm down in the space, making people feel the best rhythm in visual effect.

In a simple, decent and comfortable space, the details can often inadvertently reflect owners' conservation and heritage, and also further convey design ideas. In the wall of living room and mosaic processing of floor, this case connects spatial continuity and modern feelings in the form of irregular width. At the same time, focus on details, and use the black mirror to reflect the relationship between the different materials, and let the integration between the different blocks without tedious elements and possess the neat unique modern atmosphere. Looking at the vague lotus in the space, and a branch of orchid will even gently touch people's hearts and the memory, kind and easygoing feelings brought in, and the boring mood and noises in the city are eliminated completely.

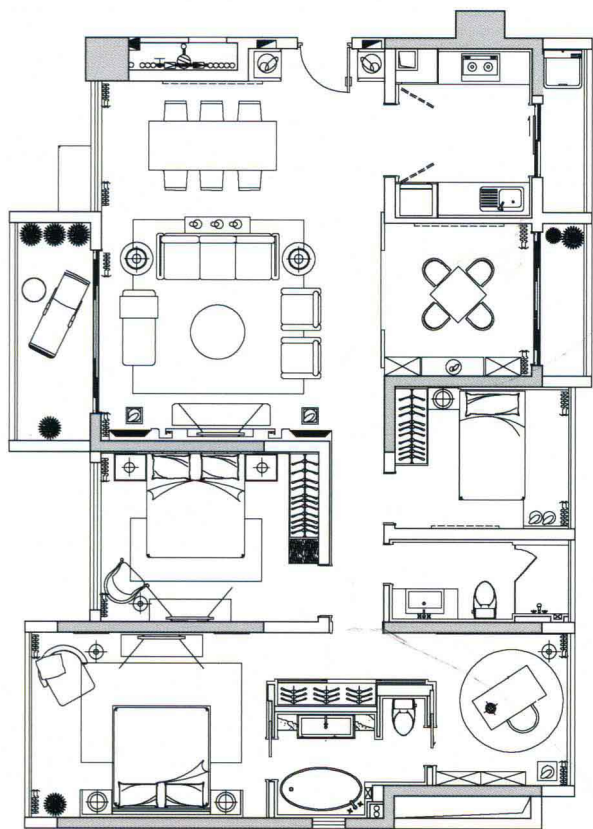












平面布置图

所谓设计中的“新东方主义”，究其实意，在于援引中国文化生活中的传统意符，与现代生活精神、设计构思和施工技术完美结合，以期对室内空间、传统文化和业主的生活审美态度进行当代思想的诠释。虽然古今一脉相承，但是意欲求得“传统”与“现代”两种元素的融合，仍然面临时间的隔阂，和由此可能产生的意识和技术的矛盾。这是本案在室内空间设计中要着重探讨和加以解决的问题，也是对室内空间进行创新表达的契机。

本案设计单位地处深圳沙井繁华地段，紧邻国税局，周边各项生活设施完整，交通网络便捷，预设为行业成功人士居家或商业合作伙伴莅深暂时居住地。从社会地理环境来看，现代都市生活赋予此居住单位以生活的便捷，同时也增添了快节奏的心理压力，我们是否可以在喧嚣和物质的世界中保有属于自己的一块思想和心灵的栖息之地，让我们能得以彻底的放松和实现片刻对自我的回归？追溯传统文化或许是寻得心灵慰藉的有力手段。在设计构思中，我们摒弃了传统文化中帝王、世家的瑰丽奢华，选用某些传统元素与现代简洁流畅的线条相结合，通过色彩、气韵、意境等方面的创新，营造出朴实、大方、自然、安宁的生活意境。

本案单位居住面积不大，为避免生活和感知的局促，在空间处理上打破了传统隔间的做法，以开放、穿透的设计理念，巧妙地以家具为隔间材料，将原有四室两厅的空间格局进行重新定义和分配，实现了空间新的伸展，也达到了使用的极大值。

空间的色彩和材料选择并不复杂，墙面以影木清漆涂装，黑镜钢与白色天花勾缝造型收边，大面积的白色、浅木色形成简洁利落的空间块面，错落有致的搭配带出空间的延续和流转。一组具有现代感的中式屏风、部分中式家具和门框、门套则选用了深棕色调，虽然着墨不多，却很好地让在空间中舒适漂浮的浅色调沉静下来，在视觉上给人以张弛有度的节奏感。

在简洁、舒适的空间中，细节往往能在不经意中显示居住者的涵养和底蕴，也能进一步演绎设计的思想。本案在客厅墙面和地面拼花的处理上，以不规则宽窄形式相连接来增强空间的连续和现代感，同时注重细节的把握，利用黑镜钢固有的质地来缝合不同材质之间的关系，让不同块面之间的整合没有繁琐的元素，干净利落，独具现代气息。再看看空间中一幅朦胧的荷，一枝兀自伸展的兰，就轻轻地触动了人们内心深处的那一点儿时的记忆，亲切和随和油然而生，把城市中的浮躁与喧嚣消除得一干二净。

