

# BANK ARCHITECTURE

## 银行建筑与室内设计

刘翰林 编 常文心 译



辽宁科学技术出版社

## 图书在版编目 (CIP) 数据

银行建筑与室内设计 / 刘翰林编; 常文心译. --  
沈阳: 辽宁科学技术出版社, 2012. 1  
ISBN 978-7-5381-7169-3

I. ①银… II. ①刘… ②常… III. ①银行—建筑设计②银行—室内装饰设计 IV. ①TU247.1

中国版本图书馆CIP数据核字(2011)第208419号

出版发行: 辽宁科学技术出版社  
(地址: 沈阳市和平区十一纬路29号 邮编: 110003)  
印刷者: 利丰雅高印刷(深圳)有限公司  
经销者: 各地新华书店  
幅面尺寸: 245mm×290mm  
印 张: 34  
插 页: 4  
字 数: 50千字  
印 数: 1~2000  
出版时间: 2012年 1 月第 1 版  
印刷时间: 2012年 1 月第 1 次印刷  
责任编辑: 陈慈良  
封面设计: 杨春玲  
版式设计: 杨春玲  
责任校对: 周 文  
书 号: ISBN 978-7-5381-7169-3  
定 价: 268.00元

联系电话: 024-23284360  
邮购热线: 024-23284502  
E-mail: lnkjc@126.com  
<http://www.lnkj.com.cn>  
本书网址: [www.lnkj.cn/uri.sh/7169](http://www.lnkj.cn/uri.sh/7169)

# BANK ARCHITECTURE

## 银行建筑与室内设计

刘翰林 编 常文心 译



辽宁科学技术出版社



# BANK ARCHITECTURE

## 银行建筑与室内设计

刘翰林 编 常文心 译

辽宁科学技术出版社

# CONTENTS

## 目录

### BUILDING SHAPE

建筑造型

ANZ Centre 澳新银行中心	006	NRW. Bank Muenster 北威州银行门斯特分行	074
DnB NORD Office Building in Riga 里加DnB北方银行办公楼	014	Reconstruction of the Headquarters of the Volksbank Karlsruhe 卡尔斯鲁厄大众银行总部重建工程	082
Raiffeisen Headquarters 来福森银行总部	024	Branch of BW-Bank Böblingen, Germany 德国巴登-符腾堡银行布林根分行	088
Swedbank Head Office Building 瑞典银行总部大楼	030	Sugamo Shinkin Bank - Shimura Branch 巢鸭信用银行志村分行	096
Bendigo Bank (Stage 1) 本迪戈银行（一期工程）	038	Sparkasse Berchtesgadener Land, Central Office and Branch in Bad Reichenhall 贝西特斯加登储蓄银行巴特赖兴哈尔城中央办公楼和分行机构	102
Raiffeisen Finanz Centre, Eisenstadt 艾森斯塔特来福森金融中心	046	Middelfart Savings Bank 米泽尔法特储蓄银行	108
Saxo Bank 萨克索银行	052	New Branch of the Cooperative Credit Bank 合作信贷银行新支行	116
Italease, Headquarters for a Bank 伊塔里斯银行总部	060	Bank of Stockton 斯特克顿银行	124
European Investment Bank 欧洲投资银行	066	Sparkasse in Hettingen 赫廷恩储蓄银行	130



## PUBLIC SPACE

公共空间

Hana Bank - Myeongdong Branch 韩亚银行明洞分行	134
Sugamo Shinkin Bank - Tokiwadai Branch 巢鸭信用银行常盘台分行	142
Barwa Bank 巴尔瓦银行	148
Raiffeisen Bank 来福森银行	154
National Bank of Greece 希腊国家银行	158
Sugamo Shinkin Bank - Niiza Branch 巢鸭信用银行新座分行	164
Sound Community Bank - Port Angeles 桑德社区银行安吉利斯港分行	168
Hana Bank Incheon Airport Branch 韩亚银行仁川机场分行	172
Aktienbank Augsburg 奥格斯堡阿克狄恩银行	178
One Shelley Street 谢莉街一号银行	184
CheBanca! 彻银行	190
2 "Opera" BNP Paribas 法国巴黎银行剧院二号	194
Deutsche Bank Bangkok 德意志银行曼谷分行	200
Axis Bank, Branch at Lokhandwala 轴线银行洛克汉德瓦拉分行	204
Bank in Donoratico 多诺拉迪克银行	208
BankWest 西部银行	212
Banco de Crédito del Perú (BCP) 秘鲁信用银行	216
Extrabanca 附加银行	222
Bank of Fornacette in San Romano 圣罗马诺弗纳赛特银行	226

Bank in Pontedera 彭特德拉银行	232
AGCI Bank AGCI银行	236
Banco Deuno 德诺银行	240
Bank in Collesalveti 克莱萨维蒂银行	244

## VIP SPACE

VIP空间

MidFirst Bank 3030 Camelback 中一银行3030骆驼背银行	248
MidFirst Bank One Renaissance 中一银行复兴一号分行	254
MidFirst Bank Market Street (Private Bank) 中一银行市场街分行 (私人银行)	258
BCI Private Bank 投资信用私人银行	262
One California Bank 加利福尼亚银行	266
INDEX 索引	270





2

# ANZ Centre

## 澳新银行中心

Location: Melbourne, Australia

Completion Year: 2010

Designer: HASSELL and Lend Lease Design  
- Architects in Collaboration

Photographer: Peter Bennetts, Earl Carter  
Area: 130,000 m<sup>2</sup>

地点：澳大利亚，墨尔本

完成年份：2010年

设计师：哈塞尔和联盛设计

摄影师：彼得·贝内特、厄尔·卡特

面积：130,000平方米

ANZ Centre, designed by HASSELL and Lend Lease Design, is one of the most open and permeable banking headquarters in the world. Rarely - if ever before - has a bank invited the public into the heart of its workplace. This “urban campus” is the next generation in design for collaboration and flexibility with most floor space dedicated to shared, interactive activity to enable the incidental connections that are so critical to today’s knowledge economy. Incorporating a raft of first-time green initiatives, the building is also a global environmental and social sustainability benchmark.

Located in Melbourne’s Docklands, the building’s fluid forms are inspired by its riverside setting and the external colour palette is derived from nature, ranging from earth tones at ground level to light blue sky references at the upper levels. The materials, and detailing of the building architecture reflect Melbourne’s urban character. Recycled timber cladding provides a link to the maritime past of the precinct and a green wall along the eastern elevation links the building to Docklands Park.

Despite its large scale, ANZ Centre provides an opportunity to make small-scale engagements with its local community. The building form steps down to engage with the waterfront and operate as a permeable extension of the existing urban precinct. Large floors at lower levels with smaller floors at upper levels allow for changing floor-to-floor character within the building.

This “urban campus” design concept is focused around a central publicly accessible daylight-flooded “common”. The scale and complexity of the space allow it to operate like a microcosm of the city itself - with plazas, laneways, streets and formal and informal meeting places. Cafés, public art, a visitor centre and community event spaces all contribute to creating a lively community hub. The use of timber evokes the metaphor of driftwood on river banks, echoing the external façades. Bluestone paving on the common echoes Melbourne’s famous bluestone paved laneways and further helps to bring the city’s public realm into the interior.

1. The façade is in recycled timber cladding
2. The design uses earth tones at ground level and light blue sky references at the upper levels
1. 外墙以回收木板为材料
2. 楼体下部以大地为主色调，上部演变为蓝天的颜色



3

澳新银行中心由哈塞尔和联盛设计，是世界上最开放和最具亲民性的银行总部大楼。很少有银行邀请民众进入它工作地点的核心位置。这个“城市园区”是新一代设计，让大多数楼层空间用于共享、互动，保证了当今知识经济中至关重要的连带连接关系。建筑采用了大量最新绿色科技，是国际环境和社会可持续性的重要标志之一。

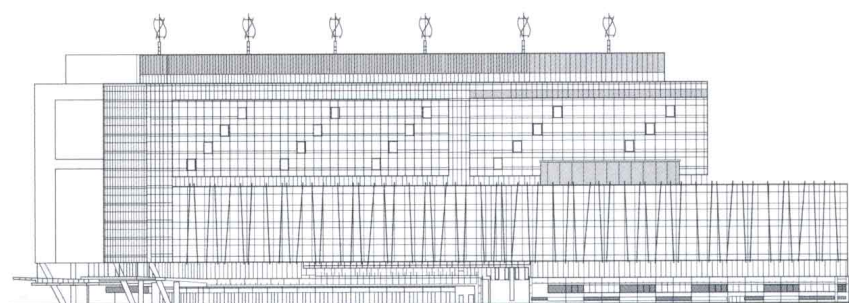
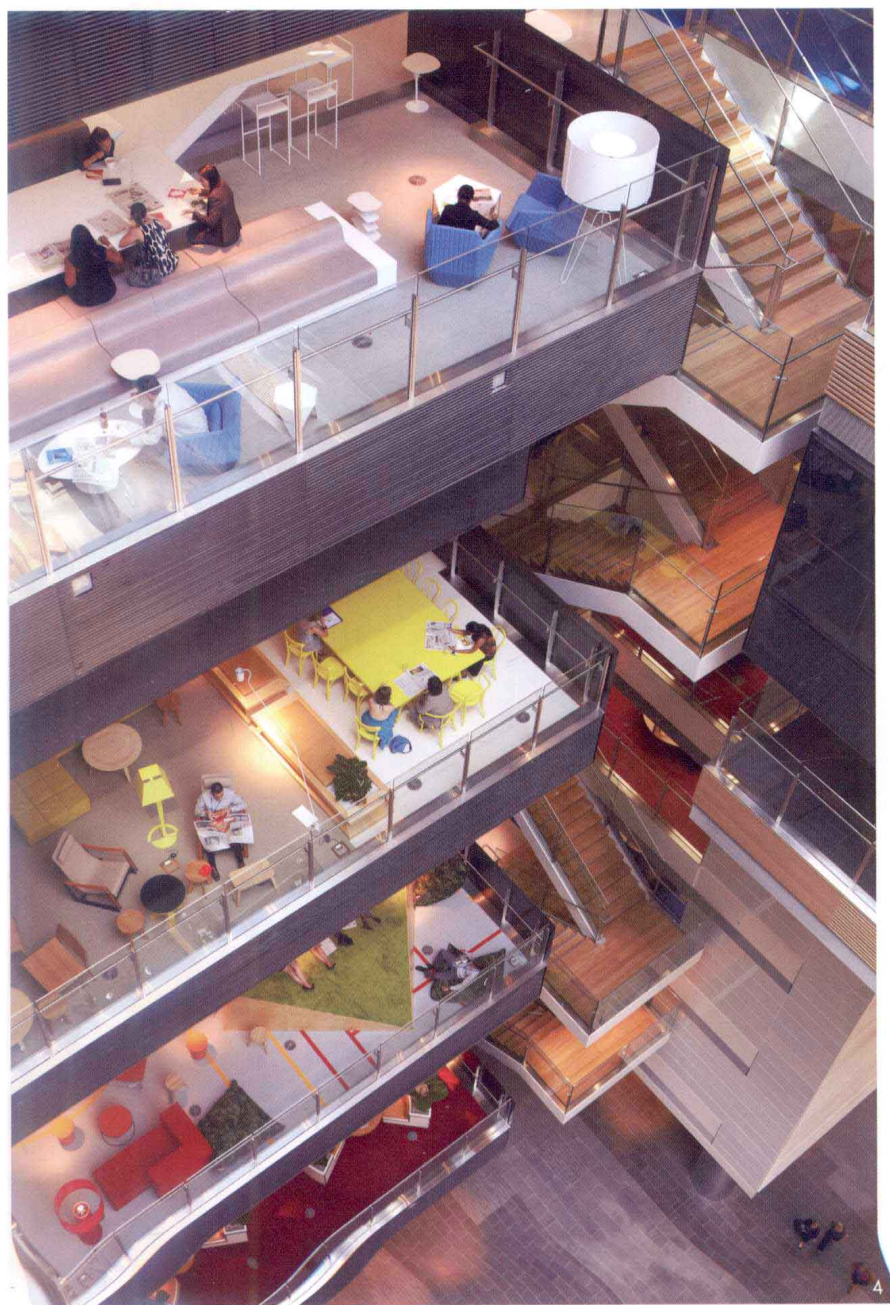
建筑位于墨尔本的达克兰区，其流畅的造型受到了河岸背景的影响，外部色彩则来源于自然——地下的楼层是大地色系，上层则演变成了天蓝色。建筑的材料和细部设计都展示了墨尔本的城市特色。回收木板外墙反映了该地区的海事历史，东立面的绿色墙壁将建筑与达克兰公园连接起来。

尽管澳新银行中心规模巨大，它还是为小型社区活动提供了空间。建筑造型与水滨相连，像是原有城市街区的延伸。底层的大型楼面和上层的小型楼面形成对比，让建筑内部楼层各具特色。

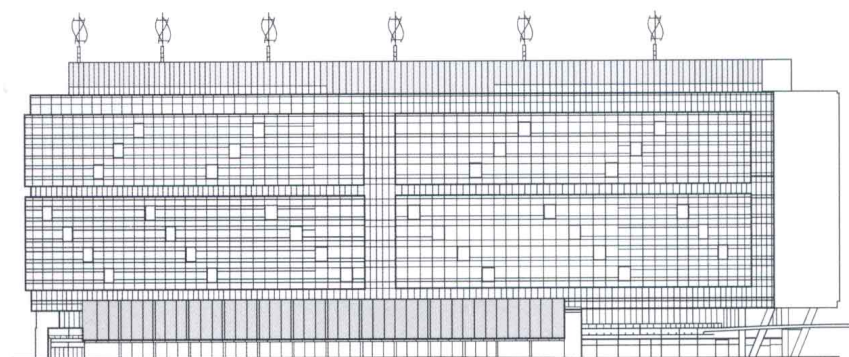
这座“城市园区”的设计围绕着中央日光公共大厅展开。空间的规模和复杂性让它向城市的缩微模型一样进行运作，有广场、小巷、街道和正式、非正式的会面空间。咖啡厅、公共艺术展览、访客中心和社区活动空间共同打造了一个活跃的社区中心。木材的运用暗喻着河岸浮木，与外墙形成了呼应。公共大厅的青石地面与墨尔本著名的青石巷遥相呼应，将城市公共环境引入了室内。

- 3. The use of timber inside echoes the external façades
- 4. Atrium
- 5. Informal meeting space
- 6. View to 'Grow' hub

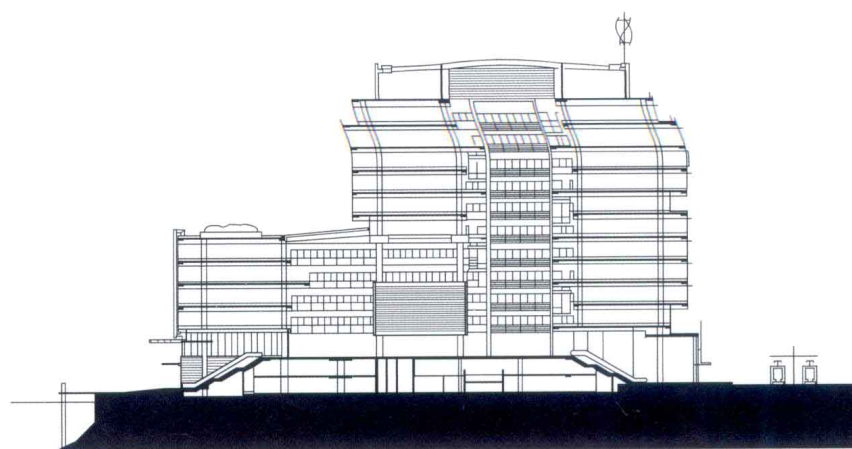
- 3. 室内空间木材的运用与外部形成呼应
- 4. 中庭
- 5. 非正式会面空间
- 6. 工作交流区



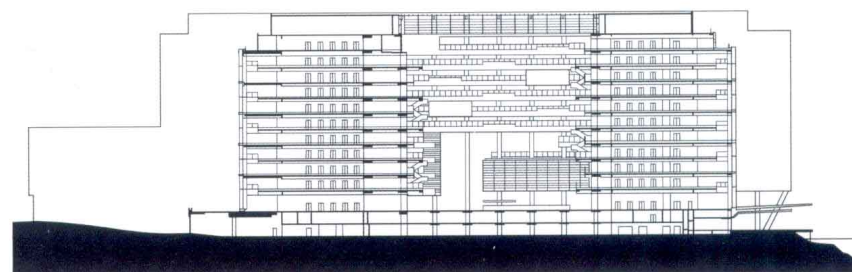
South Elevation 南立面图



North Elevation 北立面图



Section 剖面图



Section 剖面图

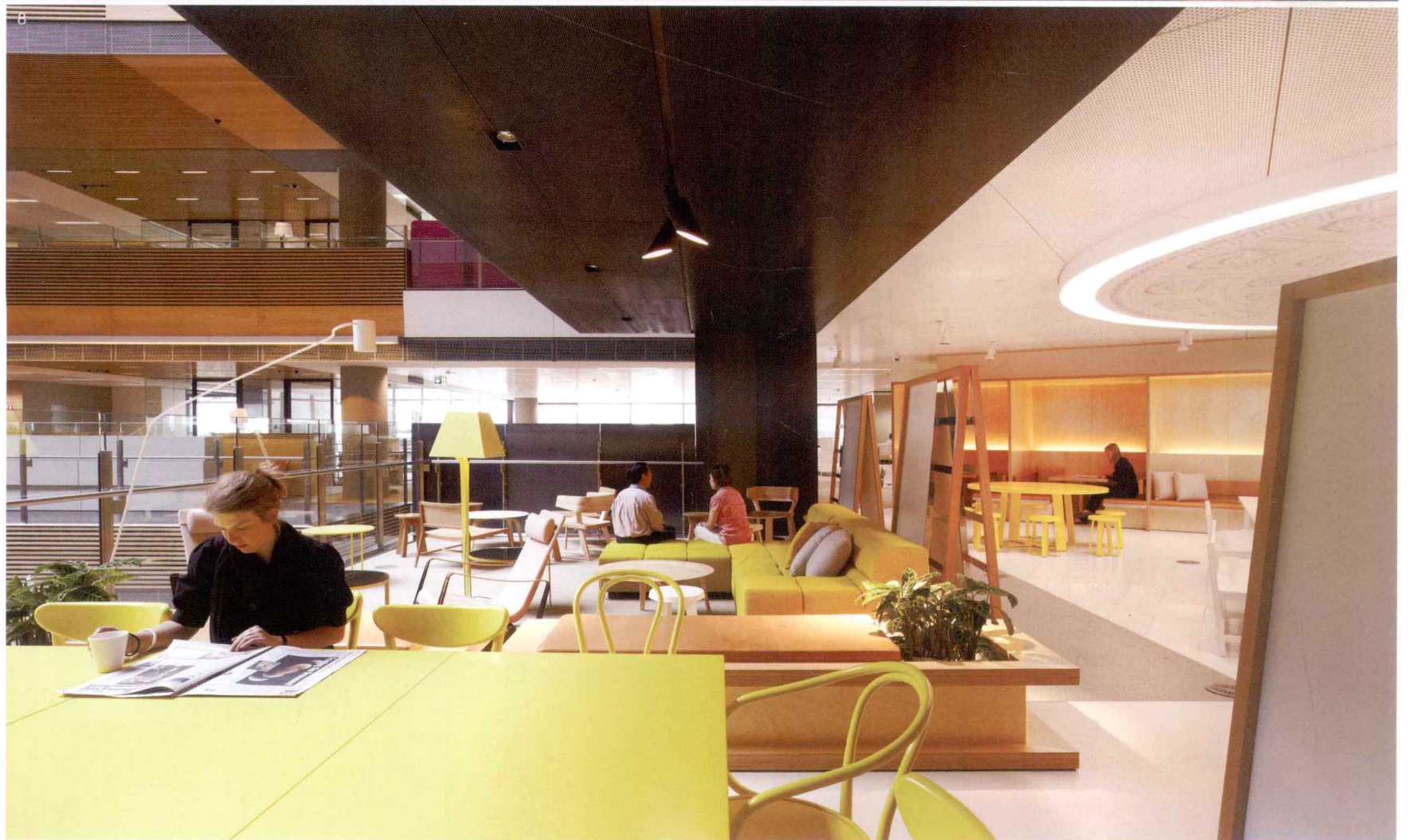
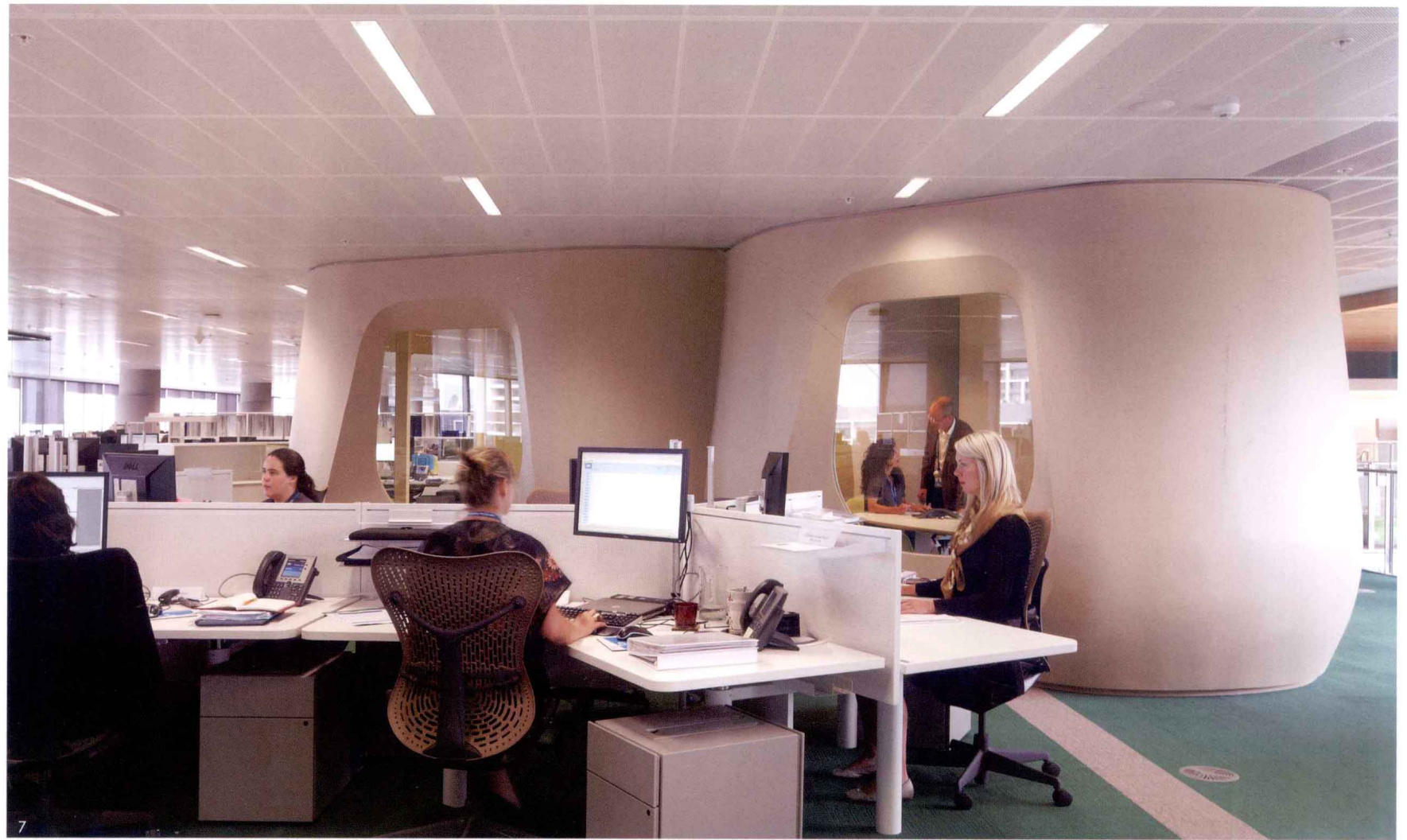


5



- Ground Floor Plan
- 1. Reception
  - 2. ANZ Meeting Suites
  - 3. Wellness Centre
  - 4. Retail
  - 5. Visitors Centre
- 一楼平面图
- 1. 前台
  - 2. 澳新银行会议套房
  - 3. 健康中心
  - 4. 零售区
  - 5. 访客中心







7. Work space  
8. 'Create' hub environment  
9. View to 'Play' hub  
7. 工作空间  
8. 休息区  
9. 休闲区





## DnB NORD Office Building in Riga

### 里加DnB北方银行办公楼

Location: Riga, Latvia  
 Completion Year: 2010  
 Designer: Audrius Ambrasas Architects  
 Photographer: Audrius Ambrasas Architects  
 Area: 14,445 m<sup>2</sup>  
 地点: 拉脱维亚, 里加  
 完成年份: 2010年  
 设计师: 奥德里斯·安布拉斯建筑事务所  
 摄影师: 奥德里斯·安布拉斯建筑事务所  
 面积: 14,445平方米

DnB NORD Bank building is situated along Skanstes Street in a newly developed multifunction area to the north of Riga's Old Town. Bank building is the first office building in the newly shaped block and individually interprets planned urban/architectural block conception. Angular location suggested the building should be a clear boundary/corner formant of the block. But at the same time the building was created as an open, inviting and involving inside for both visitors and workers.

The building consists of two separate 10-storey volumes connected by a transparent vertical communication unit. Volumes are covered by a rectangular one-storey roof slab on the top. Free area under the roof creates a new type of space. Using this space is seeking to blur the boundaries between buildings' inside and outside, to create cosy surroundings and a comfortable and smooth entry way to the bank from outside space to inside space. Also, the outdoor space of Skanstes Street is kind of "sucked in" under the roof plane and in spite of the short front side of the building creates a spatial connection with main Skanstes Street. Building façades are covered by dark stone slabs with mat finish surface, a series of aluminium profile glazing, aluminium panels and white frosted glass lines with integrated lighting.

The building is accessed through the following two entrances under the roof. One entrance is set for the visitors of bank branch on the ground floor, the other for the bank's employees working in the building. Mainly bank floors are planned as open type office working spaces for the bank employees. Also planned are a dining hall, training classrooms, meeting rooms, a server room and meeting rooms, exposition spaces in the console roof floor. A small amount of parking places are planned in the basement; rest of the cars are planned to store in common parking building in the middle of block, which is going to be built in the future.

1. General view from the southeast side
2. View of the north façade
1. 西南侧全景
2. 北外立面