

METTO

15th Asia Pacific Interior Design Awards
第十五届亚太区室内设计大奖作品选

Residential

住宅

翟东晓\深圳市创福美图文化发展有限公司 编著

大连理工大学出版社

15th Asia Pacific Interior Design Awards
第十五届亚太区室内设计大奖作品选

Residentia

住 宅

图书在版编目(CIP)数据

住宅 / 翟东晓, 深圳市创福美图文化发展有限公司编著. — 大连: 大连理工大学出版社, 2008.11
(第十五届亚太区室内设计大奖作品选)
ISBN 978-7-5611-4470-1

I. 住… II. ①翟…②深… III. 住宅—室内设计—作品集—亚太地区 IV. TU241

中国版本图书馆CIP数据核字(2008)第146442号

出版发行: 大连理工大学出版社

(地址: 大连市软件园路80号 邮编: 116023)

印刷: 利丰雅高印刷(深圳)有限公司

幅面尺寸: 242mm × 263mm

印 张: 18.5

插 页: 4

出版时间: 2008年11月第1版

印刷时间: 2008年11月第1次印刷

责任编辑: 初 蕾

责任校对: 马 帅

装帧设计: 刘竞华

文字翻译: 赵景熙

ISBN 978-7-5611-4470-1

定 价: 220.00元

电 话: 0411-84708842

传 真: 0411-84701466

邮 购: 0411-84703636

E-mail: dutp@dutp.cn

URL: <http://www.dutp.cn>

设计书店全国联销: www.designbook.cn

The exclusive distributorship in Taiwan is offered to ArchiHeart Corporation.
Any infringement shall be subject to penalties.

Preface

前言

The fifteen-year history of APIDA has witnessed the rapid progress and improvement of interior design level around the Asia Pacific region. This year, more than 550 entries have been received from such countries and regions in Asia Pacific as Australia, Thailand, Singapore, Hong Kong, mainland China and Chinese Taiwan.

The judging process of the 15th APIDA has been divided into 2 rounds, namely Hong Kong Round and International Round. The scores given by the 4 judges of the Hong Kong Round contribute to 60% of the total scores whereas the scores given by the 6 judges of the International Round from France, Italy, Malaysia, Japan, USA and UK, account for the remaining 40%.

Looking back the past and looking into the future, APIDA will continue to give awards and recognition to the outstanding interior design projects and designers, promoting professional standards and ethics among interior design practices operating in the Asia Pacific region.

亚太室内设计大奖的15年历程见证了整个亚太地区室内设计水平的进步与提升。本届大奖共收到了来自澳大利亚、泰国、新加坡、中国香港、中国内地与中国台湾等国家和地区的550多件参赛作品。

本届大奖作品的评选分为两轮，即香港评选和国际评选。其中四位香港评委给出的评分占总比分的60%；此外，还有六位分别来自法国、意大利、马来西亚、日本、美国和英国的国际评委，他们的评分占总比分的40%。

回顾过去，展望未来，亚太室内设计大奖将一如既往地优秀的室内设计项目和设计师给予鼓励和肯定，推动亚太地区的室内设计水平更上一层楼。



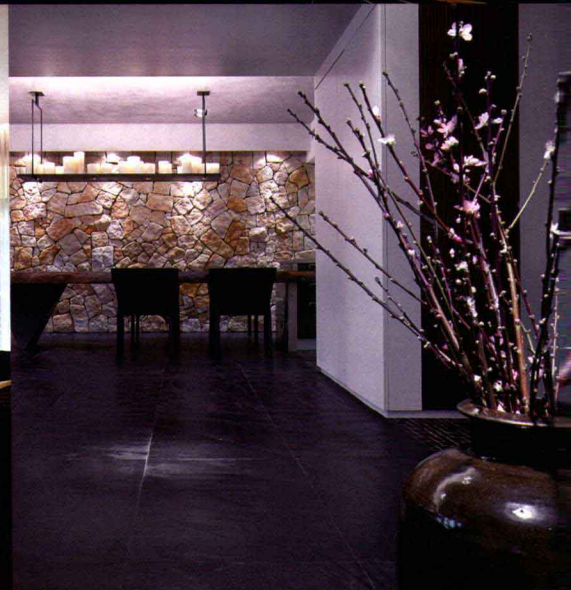
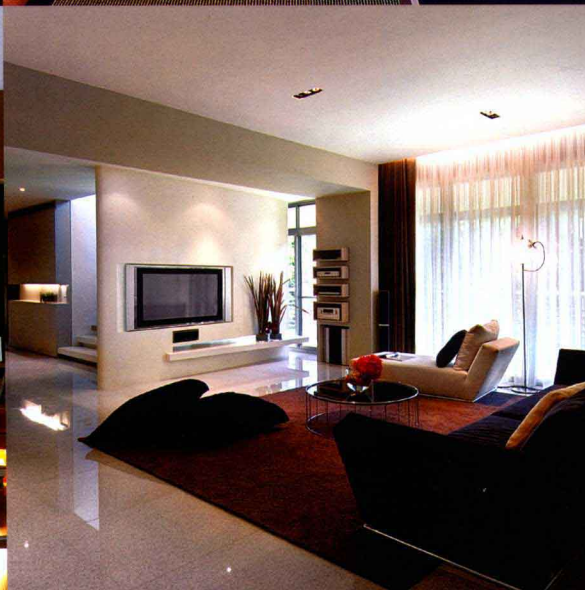
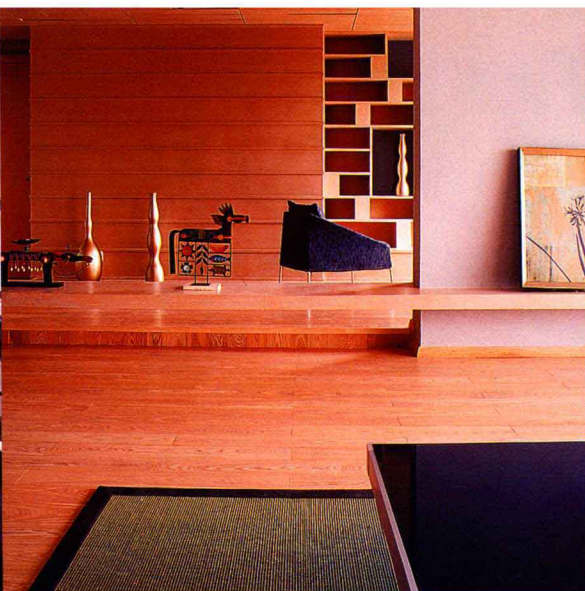
Mr. Kinney Chan 陈德坚

Chairman of HKIDA
香港室内设计协会 主席



Ms. Louisa Young

Chairlady of APIDA
亚太室内设计大奖组委会 主席

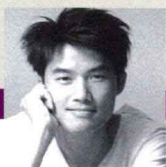


目录 Contents

006	Residence in Jardine's Lookout	150	云间绿大地陈府
010	福州融侨锦江 D 区 7#2502	154	我家
014	轻井花道住宅	158	张先生住宅
020	家的意境	162	中信红树湾林先生住宅
024	Arc	166	素雅栖居
028	Taste	170	天津犀地样板房
032	Living with nature	174	碧水芳洲
034	Apartment O	178	世茂外滩花园
038	Harbour Home	182	华府天地楼王
042	东逸湾	186	中凯城市之光
046	仙林新街坊样板房	190	复式住宅楼
050	Tiffani by i-ZEN	194	金水湾别墅
054	Bel-Air on the Peak	198	华新国际天域三期精装房
058	The Courtyard by the Canal	202	别墅 52 号
062	House 18 at Severn Road	206	Andrew's house design
066	Living within City	210	敦化雅极
070	Smithfield Terrace	214	碧海湾住宅
074	Fontana Gardens	218	宁静 4 号住宅
078	Constellation Cove	222	凯泽雅园住宅
082	Perfect Eden	226	御花苑别墅样板房
086	Modern Glamour	230	深圳市春华四季园 4 栋 2 单元住宅
090	Emerald Green	234	体验优雅
094	Kinder Home	238	在城市中
098	Simple Home	242	住宅
102	Yihe Top Court	246	空即色
106	House in Hong Lok Yuen	250	中信 A 栋 3601 室
110	House in Sai Kung	254	雅郡花园别墅
114	Caine Road	258	世茂滨江吴宅
118	Chancery Lane	262	凯旋广场
122	Kwok Residence	266	黄小姐宅第
126	真·空间	270	东逸湾
130	福州海润滨江某住宅	274	深圳市红树西岸“读书屋”
134	东莞金湾花园(半岛城邦) B 型别墅	278	龙凤花园
138	福州水乡温泉别墅	282	华侨城纯水岸独立别墅
142	福州水乡温泉别墅 89# 楼	286	锦春大厦 A 栋住宅
146	中天金海岸 28# 样板别墅	290	私人住宅



Residence in Jardine's Lookout / 1500ft²



Danny Cheng

Residence in Jardine's Lookout

Danny Cheng Interiors Ltd. / Danny Cheng

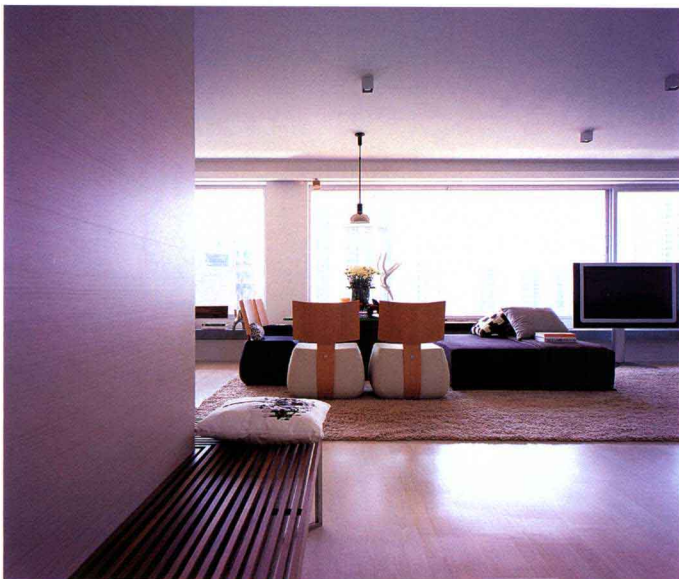
"Minimal, practical, bring the outside in" are the clients' instructions for this unit. With a great harbor-city view in front and soothing green hillside behind, the instructions made perfect sense.

Light colors, transparent glass, recessed doors and low profile furniture all combine to facilitate the passage of light throughout

the unit. Hidden storage and utility areas maximize both practicality and minimalist feel, while splashes of color accent the space.

Every element carefully selected to enhance the function, appearance and practicality of the apartment has resulted in a home that fits seamlessly into its luxurious environment.









“简约、实用、把户外的带入室内”是客户对本案的要求，公寓面朝壮阔的海港，背靠葱郁的山丘，给人完美的感受。

明亮的色彩、通透的玻璃、凹进的房门以及低调的家具组合在一起，让自然的光线可以从屋外倾泻进来，隐蔽的储物和功能区最大限度地体现了实用性和简约感，同时空间又通过点点的色彩得到了强调。

精挑细选的元素增强了公寓的功能、外观和实用性，使设计与其奢华的环境结合得天衣无缝。

15th APIDA
Silver
银奖

福建福州 / 200m²

福州融侨锦江D区7#2502

福州大千环艺设计工程有限公司 / 陈孝生 / 叶娟、吴晓芳



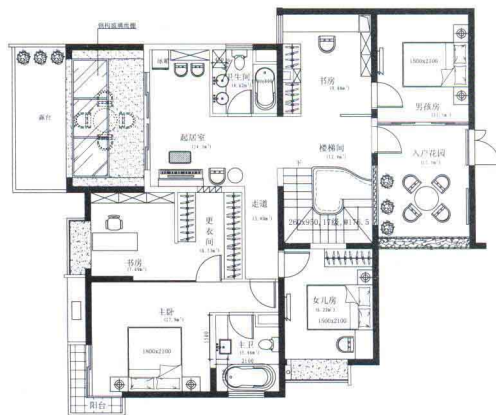
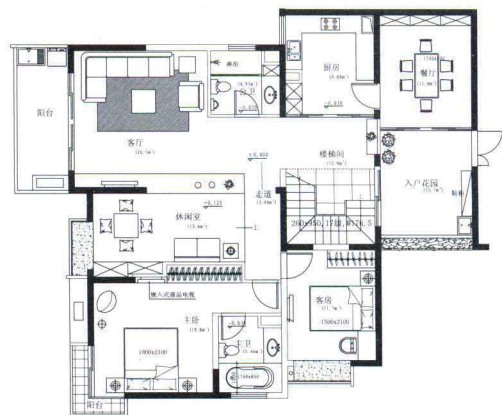
陈孝生

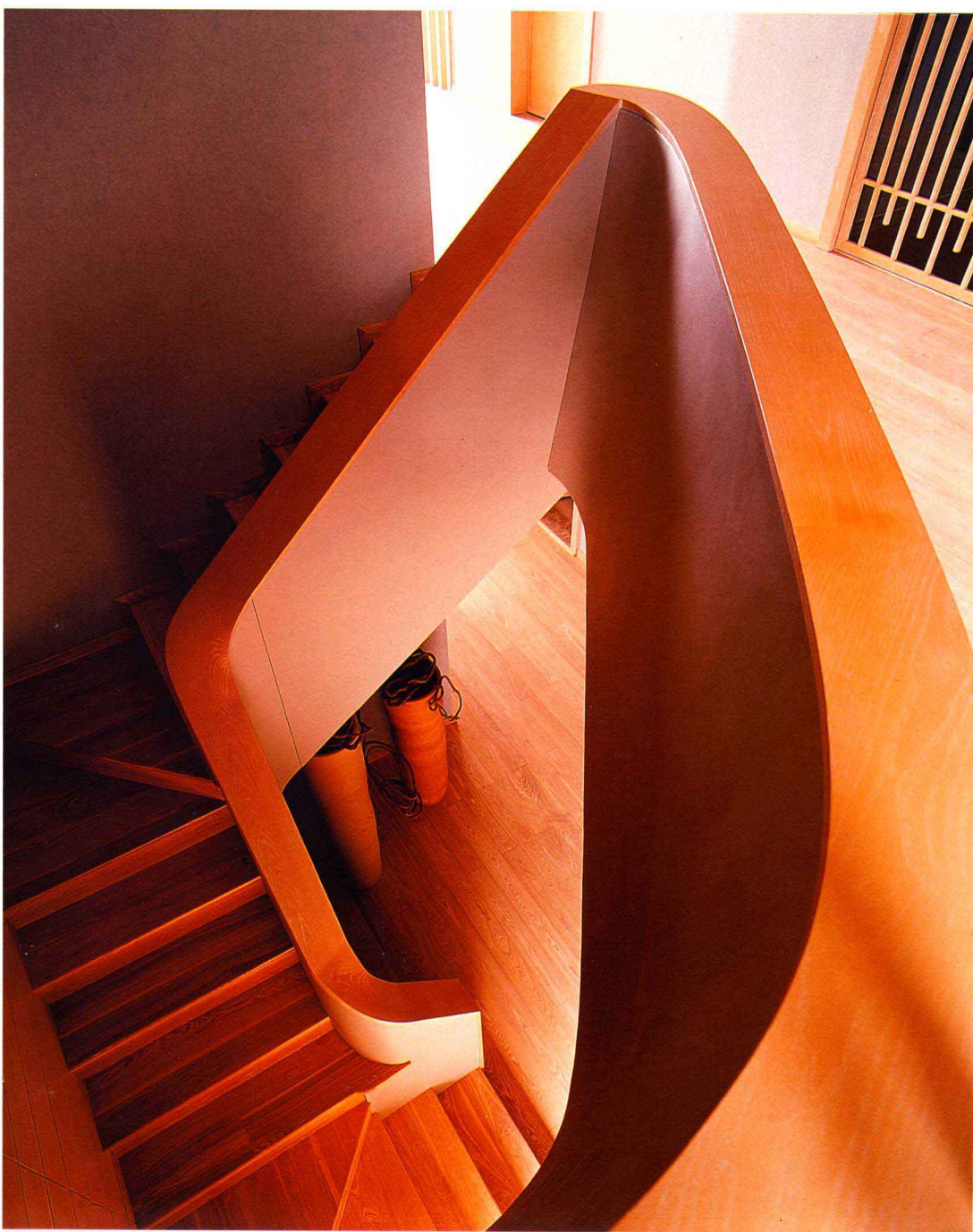
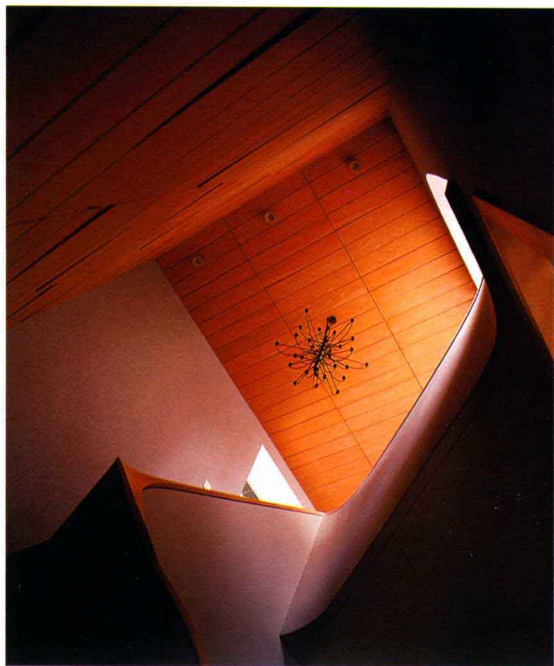
As for the design of the duplex apartment, natural and environmental factors are our primary concern. As the theme of the design, solid wood are widely used in the project, not only on the floor but also onto the ceiling. Besides, the tone of the space and the selected material are in accordance with the color of solid wood, such as Indonesian gray glass, L&D ceramics and

imported wallpaper, bringing out the sense of integrity. In the natural space, people would get the illusion as if they were living in a log cabin in forest, far from the hustle and bustle of the city. The design of the bookshelf wall represents the owner's concern of culture, expressing one kind of living taste and artistic conception.









本案为复式结构公寓,在设计中我们注重自然和环保理念。本案的特点在于对实木的广泛使用,不仅是在地面,在天花也是如此。此外,空间的基调与印尼灰玻、L&D 墙地砖、进口墙布等材质的选择都与实木的色彩相协调,给人整体感受。身处这自然的空间中,人们感觉仿佛置身于森林中的小木屋,远离城市的烦扰。书架墙的设计体现了业主对文化的关注,表达出一种生活品位与意境。

中国台湾桃园 / 150m²

15th APIDA
Bronze
铜奖



王俊宏

轻井花道住宅

王俊宏室内设计装修工程有限公司 / 王俊宏 / 涂志宏、曹士卿

Leave behind the hustle and bustle lifestyle in Taipei and move to the nearby neighborhood — Tao-Yuan seems to have become an optional trend for most people.

This project is one such case which is in a 7-floor building. There is less metropolitan bustling, with which a better quality of living environment has been substituted.

The designer convinces the owner to reconstruct the original compartments and make a whole new concept of “borders = no borders”; blurred the compartments by using a see-through material—glasses. A spacious field of vision and an abundance of light shading from day to night create a peaceful and relaxing atmosphere for the residents.



