

上海中房建筑设计有限公司作品集

**ZF ARCHITECTS  
SELECTED & CURRENT  
WORKS**

## 图书在版编目 (CIP) 数据

上海中房建筑设计有限公司作品集 / 上海中房建筑设计有限公司编. — 天津:天津大学出版社, 2012.6  
ISBN 978-7-5618-4358-1

I. ①上 · · · II. ①上 · · · III. ①建筑设计—作品集—中国—现代 IV. ①TU206

中国版本图书馆CIP数据核字 (2012) 第102107号

编 著	丁明渊、欧阳康、包海玲
编 辑	刘瑛
翻 译	上海语博翻译公司
校 对	刘瑛、Julia Poly
摄 影	黄涛、徐思、龚革非
设 计	刘海生
责任编辑	油俊伟

出版发行	天津大学出版社
出 版 人	杨 欢
地 址	天津市卫津路92号天津大学内 (邮编: 300072)
电 话	发行部: 022-27403647 邮购部: 022-27402742
网 址	<a href="http://www.publish.tju.edu.cn">www.publish.tju.edu.cn</a>
印 刷	上海瑞时印刷有限公司
经 销	全国各地新华书店
开 本	206mm×300mm
印 张	14.5
字 数	177千
版 次	2012年6月第1版
印 次	2012年6月第1次
定 价	198.00元

上海中房建筑设计有限公司作品集

**ZF ARCHITECTS  
SELECTED & CURRENT  
WORKS**

# 前言

欧阳康

《上海中房建筑设计有限公司作品集》就像一扇敞开的窗户，向我们展示了中房设计团队近年来的创作实践和成果。作品遍及许多城市，内容涵盖众多类型，其中有不同规模的办公、商业、酒店、会所、展馆、地铁上盖和城市综合体等公共建筑；有不同类型和标准的居住建筑；还有旧建筑改造和历史街区建筑的保护、利用等。它们位于中心城区或城市边缘，位于水乡或山地。这众多的建筑实例，不仅让我们解读到中房建筑对时代精神的理解和对现代生活品质的追求，同时，还让我们从设计的内涵中体会到中房建筑的实践与创作哲理间的关联。中房建筑一如既往追寻和逐渐形成的创作理念大致可归纳如下。

发扬“求索精神”是中房建筑发展的动力

在市场的竞争中，中房建筑求索并实践着精品设计的道路；在精品完成度的实现中，求索并推进着整体设计和全过程控制的方法；在建筑思潮和表现形式多元化的背景下，求索并倡导适合团队发展又表现建筑内涵和艺术发展方向的创作理念；在复杂的功能或形体工程中，求索并采用多种计算机设计辅助手段，控制建筑设计和专业间的协同。

秉承“现代理性”是中房建筑的创作原则

我们赞同建筑风格的多元化，但不主张在当今盛行的“类型化”建筑风格中跟风逐流。中房建筑提倡建筑创作中以现代理性的观念处理和协调建筑功能、形式以及与其相关的各种矛盾和关系，并以不同的现代手法表达建筑的内涵，创造出协调城市、符合民俗、亲切宜人并充满时代精神的现代建筑风格。

彰显“地域特征”是中房建筑的创作源泉

地域特征有三个要素，即人文环境、自然环境和生活环境。中房建筑提倡从“人文环境”要素中以现代的创作理念、手法和科

学技术来连接历史与未来。在传承历史文脉的同时，体现时代精神和现代生活的需求；从“自然环境”要素中体现人、建筑与自然和谐共生的现代理念，并在与天地呼应中寻求创作的灵感；从“生活环境”要素中找到合理安排功能的依据和适应、引导现代生活的方法。只有这样，我们才能不被各种形式左右，寻求到真正的创作源泉。

尊重“历史环境”是中房建筑的文脉观

文脉是历史在物质层面的沉积。尊重历史遗存，延续城市文脉，是现代理性创作观的重要表现之一。我们成功尝试过对历史风貌区的旧宅以保护为主改造成会馆，作为有志建筑师的聚会场所和弘扬建筑历史的窗口。我们还提倡和实践对有价值的历史遗存进行保留、改造并赋予新的功能。这不仅体现了可持续发展的观念，同时还能产生和满足人们的怀旧情结和文化认同的人文需求，使城市文脉和文化得到传承。

关注“生态节能”是中房建筑的社会责任

我们遵从节地以及合理布局的生态原则，同时关注对自然山水、林木湿地等自然资源的尊重、保护和利用；我们遵从建筑物自身节能、环保的理念，同时关注对各种成熟技术的应用和与建筑完美结合。

我们不主张为求新而跟风，也不赞同片面追求环境的舒适而导致经济或能源过度的消耗。中房建筑倡导根据国情和地区不同的经济、自然状况和生活习俗，合理选择成熟的技术和逐步推进的环保观念。

《上海中房建筑设计有限公司作品集》的出版，是对常年累月中房建筑艰辛付出的建筑师和工程师们的一种慰藉，使他们的价值通过作品的展示得到社会更多的认同；也是业内间的一种交流，在相互学习和了解中寻求中房建筑的不足；更是一种积淀，通过实践和经验的累积使中房建筑的底蕴更加深厚，这底蕴又形成了发展的坚实基础和创作源泉，周而复始却不断攀升。

# Preface

Ouyang Kang

This book is like an open window to show the creative works and progress that ZF Architects has made in recent years. In many cities there are various types of projects, including different scales of public buildings for office, retail, hotel, club, exhibition, subway and urban complexes. There are also various types of standard residential buildings, renovation of old buildings, and historical sites where the building style has been protected and preserved. The projects are located in the city centre, at the edge of the city, in water villages and mountains. ZF Architects is in tune with the modern age we live in and the demands of modern life, which is important in designing quality buildings. ZF feels that the link between creative philosophy and practice should co-exist simultaneously and both be major factors when designing. The creative philosophy ZF Architects has been gradually forming is introduced as follows:

## Promoting the idea of staying ahead is the development force of ZF Architects

In the competitive market, ZF seeks to create quality designs and pay attention to details. Staying ahead informs the whole design process. With a diverse range of architecture and expressive forms, we seek to support the creative philosophy suitable to the team who are designing, and specific to the project and client's needs. According as the projects have complex functions or shapes, we adopt new computer-aided means to provide the best modeling and construction.

## Adhering to being modern and rational is the creative principle of ZF Architects

We agree to create a diverse range of architectural styles; we do not wish to follow the typical concept that is prevalent currently. ZF Architects promotes the idea of a modern, rational and practical way of designing when dealing with building construction, form, contradictions and relationships. The works express the high quality construction to create a modern architectural style filled with the spirit of the times we live in, coordinating cities, complying with customs and making people feel comfortable.

## Highlighting the geographical features is the creative source of ZF Architects

ZF uses the geographical features of the site to influence the creative process and modern ways of design and technology. ZF tries to create a link between past and present researching the site and its history, so it can use this information to develop modern designs and concepts respecting heritage sites. ZF takes inspiration from the surrounding environment of the site calling the natural or urban landscape to inspire the idea and promote the harmony between nature, people and buildings.

## Respecting historical remains is the context view of ZF Architects

Respecting the historical remains and continuing its urban context is one of the most important factors in the modern and rational philosophy of ZF. In historical districts we have successfully protected old buildings, transforming them into clubs as a gathering place for promising architects and into a window to carry the architectural history forward into the future. We also promote and practice the preservation of valuable historic remains, respecting them and keeping their value when converting their function into something new. It not only embodies the concept of sustainable development, but also satisfies the cultural needs with nostalgic complex and cultural identity, so that the urban context and culture may carry forward.

## Paying close attention to ecological needs is the responsibility of ZF Architects

Paying close attention to the ecological energy conservation is the social responsibility of our company. Complying with the ecological rule of using the land sparingly and reinforcing carefully considered planning, we also pay close attention to protecting and using the natural environment such as landscapes and wetlands. Following the concept of energy efficiency in buildings and protecting the environment, we focus on a perfect combination of various advanced technologies and construction methods.

We do not support the idea of following the crowd for the sake of innovation wishing to build sustainable environments. ZF believes in the concept of protecting the local ecological environment specific to the site.

This book is published as a dedication to the architects and engineers who have worked hard for the company for years, showing how valued their expertise and conscientious attitudes are. The more experience gained and more projects we can learn from, the stronger the foundations will be for the company to build on. we can continue with our success and understanding of the client's needs and constant changing demands of the architectural profession in these modern times.

目录 CONTENTS



黄浦中心	006	SHANGHAI CITY POINT
御华山大厦	018	SHANGHAI HUASHAN PLAZA
苏州筑园会所	024	SUZHOU ARCHI-GARDEN CLUB
上海MINI公馆	032	SHANGHAI MINI APARTMENTS
海鸥商务大厦	040	SEAGULL COMMERCIAL BUILDING
莲花国际广场	046	LOTUS INTERNATIONAL PLAZA
新富港金融中心	054	NEW RICH PORT
日月光中心广场	062	ASE CENTER
世博会挪威馆	072	NORWEGIAN PAVILION OF SHANGHAI EXPO 2010
江南润园会所	082	JIANGNAN RAIN CLUB
上海MINI 公馆 C楼	090	BUILDING C , SHANGHAI MINI APARTMENTS
盛源家豪城商业中心	096	SHENGYUAN BUSINESS CENTER
旭辉商业广场	102	CIFI COMMERCIAL SQUARE
徐汇区156号地块	110	XUHUI DISTRICT, PLOT 156
厦门国际银行科技研发中心	116	XIB TECHNOLOGY CENTER
杭州转塘项目	124	THE PROJECT OF ZHUANTANG , HANGZHOU
吴江市民活动中心	130	WUJIANG CIVIC CENTER
上海证大九间堂别墅	136	PUDONG MANDARIN PALACE
上海静鼎安邦府邸	144	SHANGHAI JINGDING ANBANG VILLA
上海湖南路别墅	150	SHANGHAI HUNAN ROAD VILLA
江南·润园	156	JIANGNAN RAIN VILLA
杭州坤和和家园·紫园	166	CANHIGH HE GARDEN
上海万源城·朗郡	176	SHANGHAI WANYUAN CITY, LANG COUNTY
新浦江城	182	PUJIANG NEWTOWN
上海新凯家园	192	SHANGHAI XINKAI GARDEN
万科公望·悦山苑	198	VANKE HUANG GONGWANG VILLA
上海明园揽翠苑	210	SHANGHAI MINGYUAN PHASE III
万科郡西别墅	218	VANKE JUNXI VILLA
黄山水云涧	224	HUANGSHAN SHUIYUN VILLA





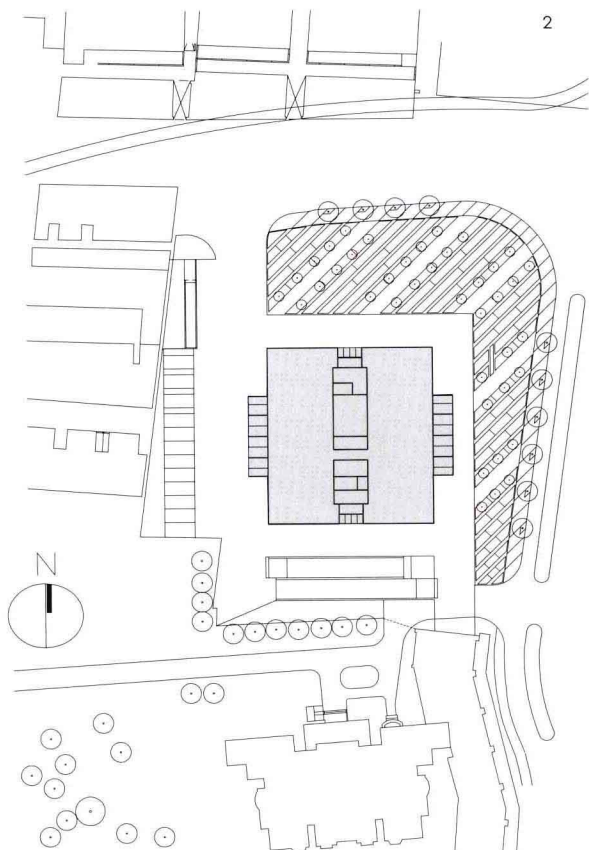


## 黄浦中心

SHANGHAI CITY POINT

业主：上海众鑫资产经营公司  
地址：上海市黄浦区中华路、方浜西路  
设计/建成：2007年/2009年  
建筑面积：2.3 万平方米  
类型：办公  
层数：20层

Client: Shanghai Zhongxin Asset  
Management Co.,Ltd.  
Location: Huangpu District, Shanghai  
Design/Completion: 2007/2009  
Total floor area: 23,000 m<sup>2</sup>  
Type: Office  
Levels: 20



1. 办公楼全景  
2. 总平面图

In order to design a high quality office building the project pays attention to the value of the surrounding landscape. It aims to reduce building density as far as possible, improving the surrounding landscape and coordinating with urban environment. The building is simple with a neutral color; the curtain walls that combine glass and stone are modern and refined. The interior design of the building coordinates with the exterior in order to see and feel the building as a whole. The material used in the lobby is of stone texture, which makes the outside and inside of the building relate and integrate with each other, reinforcing the feeling of this modern structure.

项目设计秉承“精品建筑全程控制”的理念，注重周边景观价值，尽可能减少建筑密度，提高绿地率，并与城市环境相协调。建筑形体简洁方正、色彩稳重，采用玻璃与石材相结合的单元式幕墙，现代而不失精致。室内及环境设计注重与建筑立面风格和材料相协调。入口大堂的墙、地、顶以及室外地坪、花坛等均采用石材或仿石材料，使建筑内外浑然一体，强化了现代办公品质。





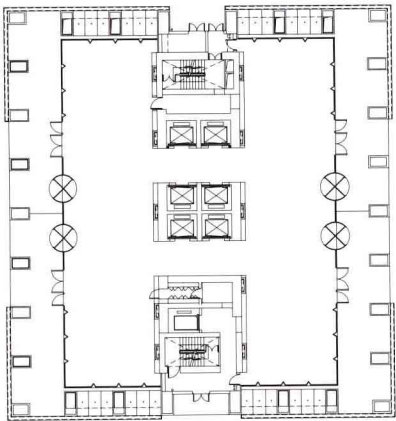




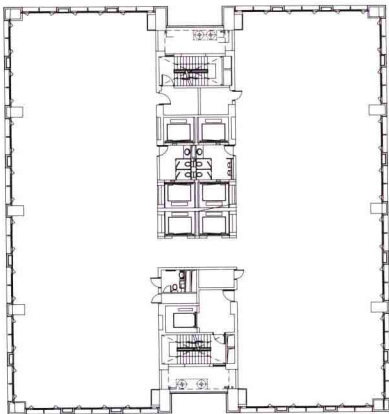




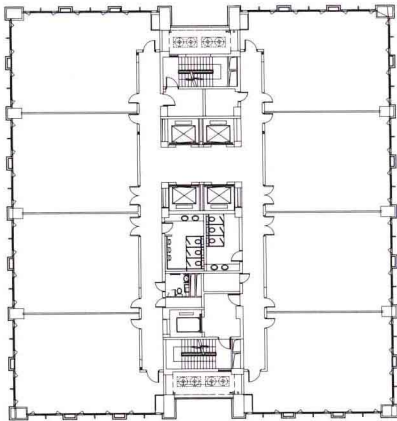




5



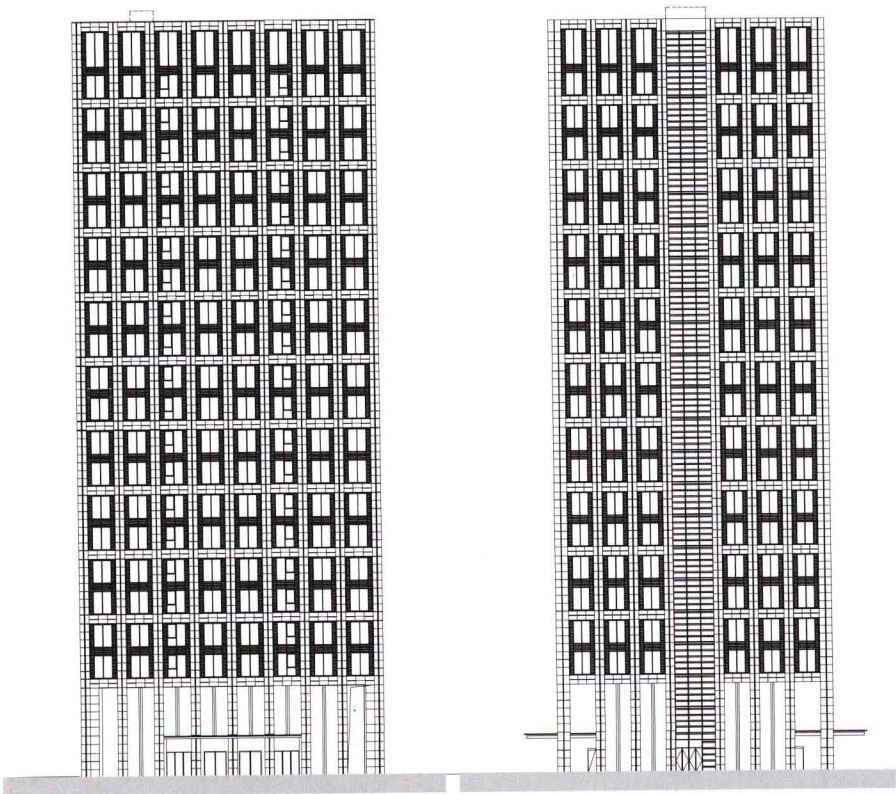
6



7

- 3. 办公楼外观实景
- 4. 办公楼外观局部
- 5. 办公楼底层平面图
- 6. 办公楼低区平面图
- 7. 办公楼高区平面图
- 8. 办公楼东南立面图

8

















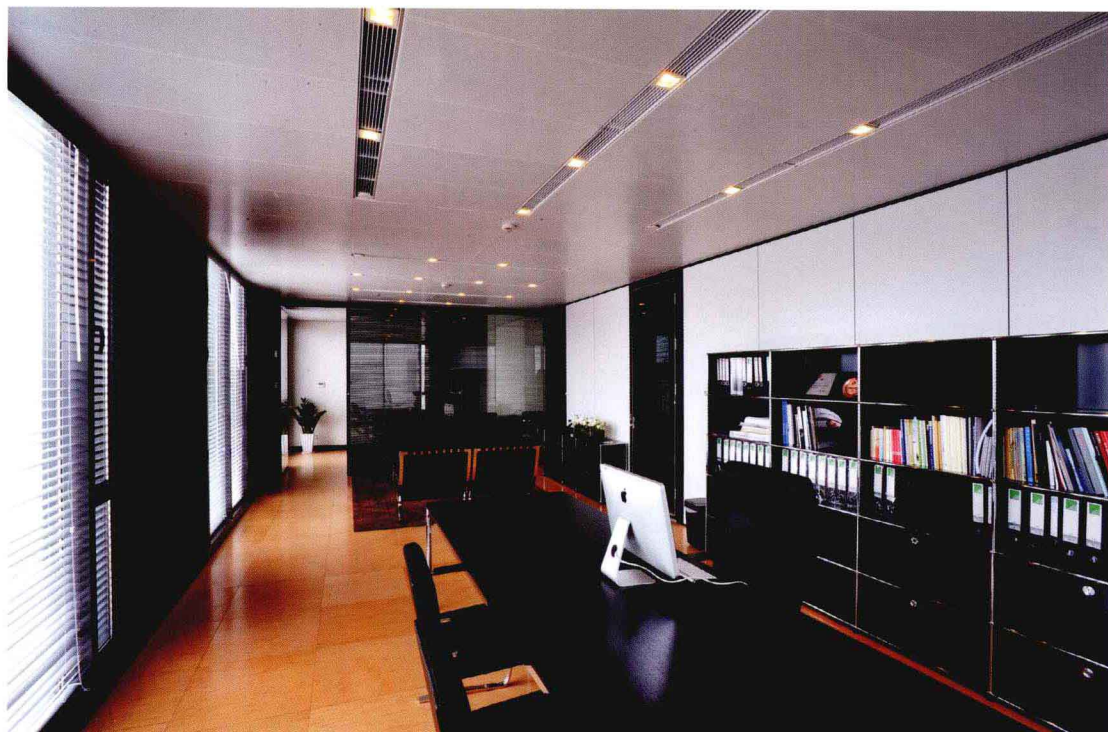
9. 中房建筑接待大堂

10. 中房建筑大堂入口

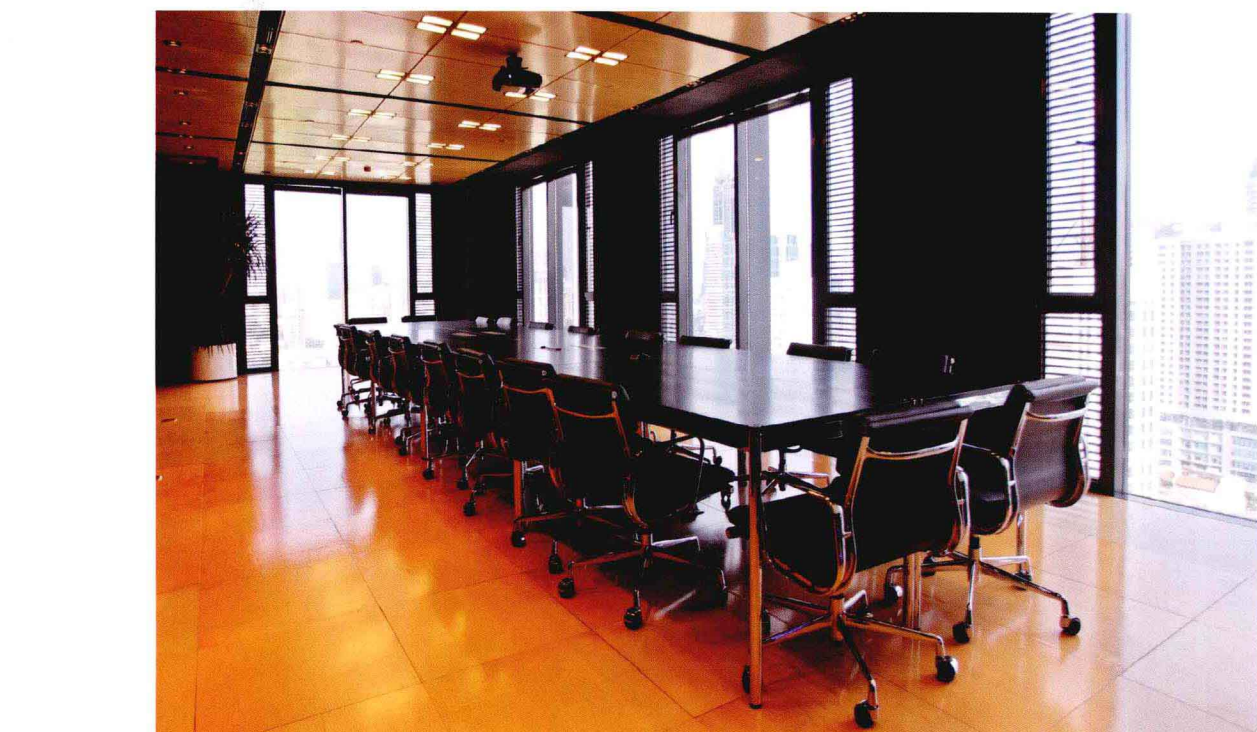
11. 中房建筑办公空间

12. 中房建筑会议空间

10



11



12