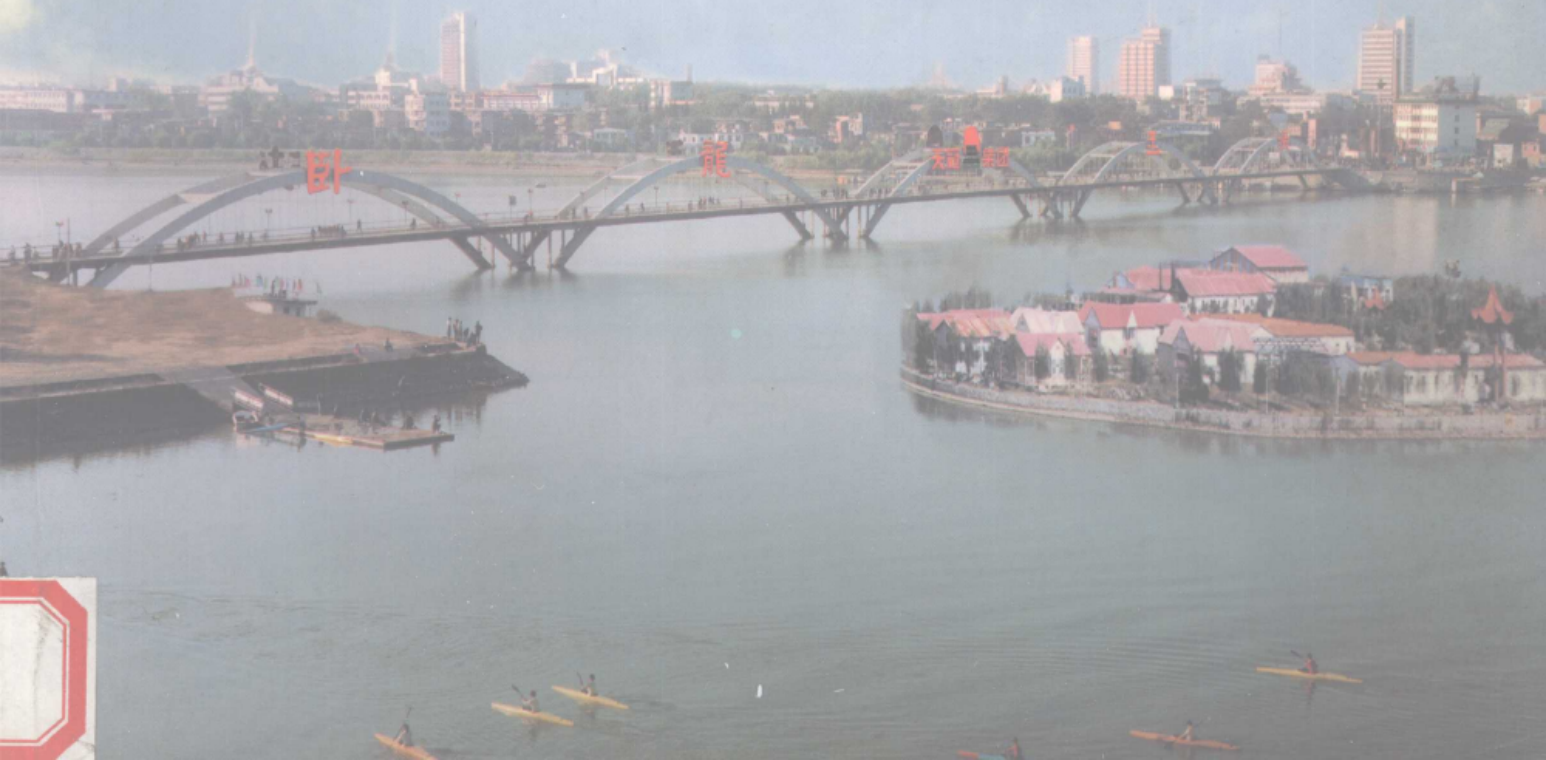


ZHONGYUANFENGCAI

中原风采



中原宝地—南阳



南阳玉雕——花薰

南阳市位于河南省西南部，是一个三面环山，南部开口的盆地。辖2区10县1市，总面积2.66万平方公里，人口1034万。

南阳历史悠久，早在战国时期，就是闻名全国的冶铁中心。西汉时期为全国六大都会之一。东汉时，光武帝刘秀发迹于此，故称“南都”、“帝乡”。南阳人杰地灵，名人辈出，历史上曾培育出大政治家百里奚、范蠡，科学巨匠张衡，医圣张仲景，杰出的政治家、军事家诸葛亮。近代以来，以军事家彭雪枫、哲学家冯友兰、文学家姚雪垠、发明家王永民等为代表的一大批杰出人物都由此走出。

改革开放以来，南阳经济进入快速健康发展的新时期。1997年，全市国内生产总值达434亿元，地方财政收入15.9亿元，城镇居民人均可支配收入3713元，农民人均纯收入1777元。

南阳素有“中原粮仓”之美称，主要种植小麦、水稻、玉米、棉花等农作物，是河南省主要粮食外调市，其粮、棉、油产量在全省、全国都占有举足轻重的地位。

南阳工业初具规模，现已形成机电、石化、纺织、医药、食品、建材六大支柱产业，拥有乡以上工业企业3000多家，工业产品3000多种，兴建三资企业340家。

南阳地理位置优越，交通通讯便利。目前，焦柳铁路纵贯全境，正在建设中的宁（南京）西（西安）铁路将在南阳与焦柳铁路交汇；公路：四通八达；南阳机场可起降波音737客机，已经通北京、广州、郑州等航线；通信设施完备，可与国内各地及世界上183个国家和地区直接通话。

历史文化名城南阳是全国汉文化最集中的旅游区之一，全市具有较高审美价值和文化价值的名胜古迹达40多处。其中，武侯祠、医圣祠、张衡博物馆、汉画馆、内乡县衙等都是旅游观光的好去处。

南阳是一块潜力巨大有待继续开发的宝地。1000万南阳人民热诚欢迎海内外各界人士前来旅游观光，投资建厂，通商贸易，共图大业！



刘备三顾“茅芦”遗址



中国海关



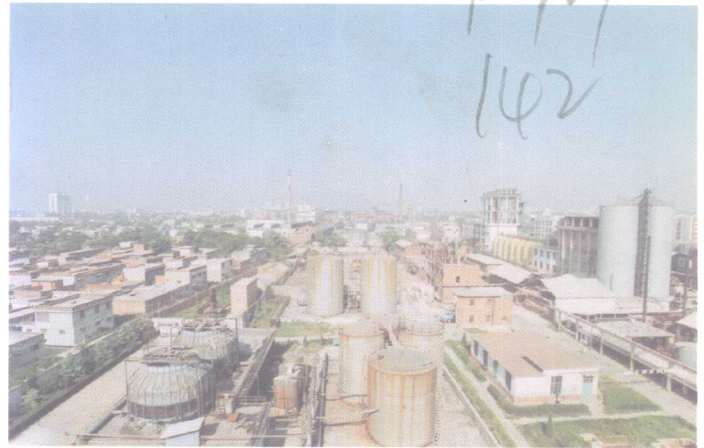
麦收



南阳飞机场



恐龙蛋化石



天冠集团公司

Nanyang -- A Treasure Land in Central China

Situated in the southwest of Henan Province, Nanyang is a basin surrounded by mountains on three sides. The city has under its jurisdiction of one city, two districts and ten counties with a total area of 26,600 square kilometres and a population of over 10.34 million.

Nanyang has a long history. As early as during the warring States period, it had already a national iron-smelting centre. During the western Han Dynasty, this place was one of the six metropolises in the country then. Nanyang was also the place where Emperor Guangwu of the Eastern Han Dynasty rose to power, hence the name "Southern Capital" and "His Majesty's Hometown". With its fertile land and beautiful water, Nanyang has produced a rich group of outstanding figures, such as: Bai Li-xi, Fan Li, great politicians; Zhang Heng, a great scientist; Zhang Zhongjing, a medical sage; Zhuge liang, an outstanding state and become celebrities sman and strate-gist Since modern times, many outstanding persons have come out of this land, among them are: peng Xue-feng, a famous New Fourth Army Armg general, Feng You-lan, come out of famous Chinese philosopher; Yao Xue-yin, a great writer and wang Yong-min, the inventor of, the "Five-Stroke-Type Chinese-characters Coding Input Scheme".

Since the reform and opening up to the outside world, Nanyang has entered a new stage in rapid and healthy economic development. In 1997, the gross national product of the city was 43.40 billion RMB yuan; the local revenue mounted to 1.59 billion RMB yuan; and the percapita annual net income of the urban residents reached 3,713 yuan and that of the farmers was 1,777 yuan.

Nanyang has long enjoyed the title of "A Granary in Central China". It is rich in wheat, rice, corn and cotton production and this makes it the main city in Henan Province for grain transference to other provinces. The yields of grain, cotton, edible oil here occupy a dominant position in the province.

The industry in Nanyang is beginning to take shape. With more than 3,000 industrial enterprises at above township level and over 3,000 products, six mainstay industries i.e. machinery and electronics, petrochemicals, textiles, pharmaceuticals, food processing and building materials have emerged. And 340 joint ventures have been set up in the city too.

Nanyang has an excellent geographical location with superb communications and transport facilities. The Jiaozuo-Liuzhou Railway runs through its territory. The Nanjing-Xi'an Railway, crossing the Jiaozuo-Liuzhou Railway here, is under program. Here in Nanyang, highways extend in all directions and Nanyang Airport is large enough for Boeing 737 airlines to land and take off. Several airlines have been opened to Beijing, Guangzhou and Zhengzhou. With perfect communication facilities, direct calls can be made to 183 countries and regions as well as the whole country.

Nanyang is a famous historical and cultural city. As one of the place with the most concentrated Han Dynasty culture, the city possesses more than 40 scenic spots and places of historical interest, which have a high aesthetic and cultural value. The Wu Hou Temple, the Museum of the Han Dynasty Stone Carving and the Ancient Neixiang County Office are all attracting places for tourism.

Nanyang is a treasure land with great potential waiting for further development. The 10 million local people here whole-heartedly welcome people both from home and abroad to come to Nanyang for sightseeing, investing or developing trade relations.



白河游览区



南阳高新区市场开发有限公司董事长李宝兴(右一) 总经理:李天庆(中) 在商议工作

南阳市场开发有限公司

南阳钢材市场建在南阳高新区内, 位于南阳市人民北路与312国道交叉口。市场占地230亩, 建筑面积4.2万平方米, 可容纳商户420家。

该市场地处中原, 位置优越, 交通方便, 规模设施全国一流。公路312、209; 铁路焦枝线和规划的宁西线在南阳交汇, 市场内设10-30米宽的道路10条。

该市场配套设施齐全, 市场建有500KVA高压配电系统, 100吨无塔供水系统, 600门程控电话, 7.2KW高杆太阳灯, 跨度72.36米, 高24米的钢网架大拱门等。市场设有搬运站, 停车场、银行、饭店、浴池、卫生所、理发店, 副食店及信息服务系统——国内贸易部北京威萨特中国商品市场信息网南阳站、物资信息报南阳站、《豫西南商情》编辑部等。

该市场以“全心全意为人民服务”为宗旨, 对市场实行封闭性小特区管理。

南阳地理位置优越, 商机无限, 欢迎到南阳钢材市场来!

董事长: 李宝兴 总经理: 李天庆
地址: 南阳市人民北路钢材市场390号
电话: 0377-3293757 3293823

Nanyang Rolled Products Fair

The Fair is located at the yard of the Hightech Development Zone at the intersection of the North People's Road and State Highway 312, covering an area of over 5 hectares with a building floor space of 42000 square metres, which can hold 420 shops.

This fair lies in Central Plains with an advantageous position and easy transport facilities, its scale and installations are first-class in the whole country. Highway 312 and 209, the Jiaozuo-zhicheng railway and the Nanyang-Xi'an line which is under plan will cross at Nanyang and there are 10 roads, 10 to 30 metres wide, inside the fair yard.

This fair is also complete with necessary service facilities, a 500KVA power distribution system, a 100-ton water-supply system without tower, a 600-gate program-controlled telephone exchange, 7.2kw high-pole sunlamps, a steel-framed arched door with a span of 72.36m and a height of 24m. It has set up a transport station, a parking area, a bank, a hotel, a clinic, a barber's, a grocer's and an information service system which is made up of Beijing wisarte, state Internal Trade Ministry, China Commodity Marketing Information Net Nanyang Station, Nanyang Station of Goods and Materials Information Paper and Editorial Department of Commercial Information of Southwest Henan.

To serve customers wholeheartedly is the purpose of the Fair and it is governed in a closed way that a small special zone is.

Nanyang has a very advantageous position and is full of commercial possibilities, welcome to Nanyang Rolled Products Fair!

Chairman of Board of Directors: Li Baoxing
General Manager: Li Tianqing
Add. 390, North People's Road, Nanyang City
Tel: 0377-3293757 3293823



省委书记马忠臣在视察南阳钢材市场



南阳市钢材市场一角



南阳市经济技术协作办

主任：何长来

南阳市经济技术协作办公室组建于1986年，是河南省建立经协机构最早的市地之一。十几年来，在市委、市政府的领导下，对国内的合作，为南阳的对外开放与经济发展做出了应有的贡献，多次被上级有关部门评选为先进单位。

市委、市政府非常重视经协工作，具体赋予它以下职能和工作任务：

- 1、宣传贯彻落实国家、省有关横向经济联合与协作的方针、政策、制定南阳市经济技术协作中长期规划。
- 2、区域经济联合与协作的规划，组织实施、协调、联络与服务。
- 3、对外地驻宛办事机构进行管理与协调。
- 4、管理市政府驻外办事机构。
- 5、与我市友好城市的联络与交流。
- 6、国内招商引资、技术合作项目的收集、发布、联络与跟踪服务。
- 7、对我市企业与区外企业的联合、协作、协调、服务。
- 8、与专业院校所进行联络和我市开展科技合作与交流。

由于市场经济的自身需要，区域联合与协作工作更加显得必要，南阳市经协将为南阳的开放、开发、经济发展做出新的贡献。

地址：南阳市七一路中段

主任：何长来

联系电话：0377-3131531



全体领导成员

Nanyang Municipal Economic and Technical cooperation Office

Nanyang Municipal Economic and Technical cooperation office was set up in 1986. The office is among the earliest of its kind in Henan Province in the past ten year or more, under the leadership of the Municipal Party Committee and the municipal government, the office makes great contribution to the domestic economic cooperation and Nanyang's

economic development and opening to the outside world. For many times the office is chosen as advanced unit by its higher authorities concerned.

The municipal Party Committee and government lay much emphasis on the work of economic cooperation and grants it the following functions and tasks.

- 1 Publicizing and carrying out the state and province's policies and measures concerning the horizontal economic unity and cooperation and set up the long-term plan for the economic and technical cooperation in the municipality.
- 2 Organizing the work of implementing the plan and doing the tasks of coordinating, liaison and services.
- 3 Managing and coordinating the offices and organizations set up by other cities or regions and stationed in Nanyang.
- 4 Managing the working bodies set up by the municipal government and stationed in the other place outside the municipality.
- 5 Managing the liaison work and the exchange with the sister cities of the municipality.
- 6 Inviting the outside investment, collecting technical cooperation projects, publicizing the items, keeping up contact and doing after-project services.
- 7 Providing services for the coordination, unity and cooperation for the enterprises inside and outside the municipality.
- 8 Contacting scientific research institutions and institutes of higher learning to carry out scientific cooperation and exchanges.

Because of the needs of the market economy its own, the inter-regional cooperation has become even more necessary. Nanyang Municipal Economic cooperation office will make greater contribution to the opening, exploitation, and economic development of the municipality.

Address: Middle Section of Qiyi Road, Nanyang

Director of the Office: Mr He changlai

Tel: 3131531



南阳市协作办办公楼

南阳市计划生育宣传技术服务中心

南阳市计划生育宣传技术服务中心是河南省五个市、地级中心之一，现有职工58人，各类专业技术人员35人，其中高级专业技术人员5人、中级15人、初级15人。主要任务是全市计划生育育龄群众提供技术服务，计划生育新产（药）品、新技术的研究、开发、推广和应用，计划生育政策法规的宣传及对县、乡计划生育专业技术人员的培训等。

“八五”以来，在上级组织的正确领导下，在市计生委的具体帮助指导下，坚决贯彻执行党的路线、方针、政策，圆满地完成了各项目标任务，取得了物质文明、精神文明双丰收，多次受到市委、市政府、市计生委的赞扬，其先进事迹先后被《河南经济日报》、《河南当代企业家》《中部开发报》、《卧龙群英谱》和《南阳日报》等多家新闻单位报道，南阳市委党员教育电视台还以《擎起一片蓝天》为题作了专题报道，其典型事迹还在河南省计划生育科技工作及学术经验交流会上推广，精神文明、综合治理、安全卫生等被有关部门评为先进单位。

河南省南阳市工业路20号 电话：0377-3134896。



中心主任唐保国

Nanyang City Family Planning Publicite and Technology Service Centre

The service centre is one of the five major centres at prefectural level in Henan Province with 58 staff members and 35 professional technical persons among whom 5 have senior, 15 have middle-rank and 15 have junior titles. Its main task is to offer technical service, new family planning medical products, the reserch, development, popularization and application of new technology to childbearing women of the whole city. And it also takes the responsibility of publicizing family planning laws and regulations as well as training the professional technicians who are engaged in family planning in county and township.

Since the 8th Five-Year Plan, under the correct leadership of the authorities concerned and with the concrete help and guidance of the City Family Planning Commision, the service centre has firmly carried out the Party's line, principle and policy, having acomplished all target tasks and achieved double harvests in material and moral civilization, which won many times the acclaim of the authorities of the city. Its meritorious deeds were reported in the papers like Henan Economic Daily, Modern Entrepreneurs in Henan, Central Region Development, wolong Heroes and Nanyang Daily. The TV station, Nanyang Party Members Education, once made a specific report titled Holding Up a Blue Sky and its deeds were publicized in the experience-exchanging conference of Henan Family Planning Scientific and Technological work and Academic Study. It was also chosen as Advanced Unit of Moral Civilization, Comprehensive Control, Securiy and Health by the departments concerned.

Add: 20 Industrial Road, Nanyang City, Henan

Tel:0377-3134896



市计生中心门诊部外景



进口大型B超



生化研究室



陆营镇镇长：罗岩涛



市级文明单位、镇财政所所长：闫荣胜



农村一级甲等医院——卧龙区第二人民医院院长、支部书记：鲜化如

卧龙区陆营镇

南阳市卧龙区陆营镇总面积75平方公里，耕地面积8.2万亩，人口6.8万，改革开放以来，该镇以农业为基础，以乡镇企业为主导，以“三优”集镇为依托，农、工、贸齐头并进，有较大发展。

1997年全镇农业总产值12000万元，乡镇企业产值28000万元，财政收入260万元，农业人均收入2100元。

陆营镇交通畅达，通讯条件快捷，镇区设施齐全，政策环境宽松，镇长罗岩涛同志，热诚欢迎各界有识之士来此大展鸿图共谋大业。

镇长：罗岩涛

A Brief Introduction of Luying Town

Luying Town is under the jurisdiction of Wolong District. The town covers a total area of 75 square kilometres and has a population of 68000 people. And there are 82000 mu of arable land all over the town (One mu is equal to 667m²).

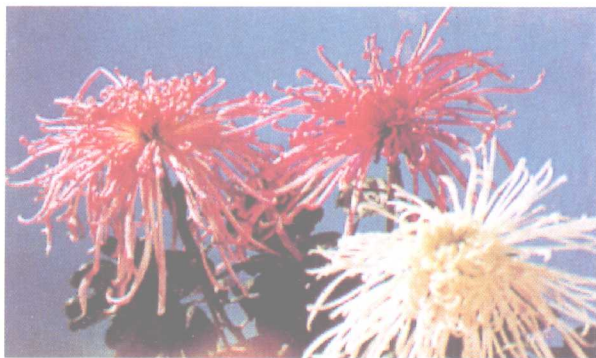
Since the reform and opening to the outside world, taking township enterprises as the leading factor, agriculture as the solid basis, and good quality country markets as the backing, has had a relatively great development with agriculture, industry and trade progressing simultaneously.

The year 1997 saw the town gain an agricultural production value of 120000000 RMB yuan and that of township enterprises 280000000 RMB yuan. The town had in 1997 the revenue of RMB 2600000 yuan and the average income per farmer is RMB 2100 yuan.

Luying Town enjoys convenient conditions of transportation and communication. In the town proper and the areas under its jurisdiction, the facilities are complete and economic policies are favourable and preferential. Town Head, Mr. Luo Yantao, sincerely invites personnels of all walks of life to open business in this place.

陆营镇轧花厂系市级文明单位，其产品先后两次获得世界博览会金奖。支部书记、厂长：冯三春同志和班子领导成员





南阳市建委

南阳古称宛，位于河南省西南部，东扶桐柏，西依秦岭，北靠伏牛，南临汉江，市域面积2.66万平方公里，人口1032万，其中：城市建成区面积42万平方公里，城市人口43万。

撤地设市三年来，南阳市委、市政府以建设“水城、绿城、历史文化名城和现代化新城”为目标，加大资金投入，实施绿化美化，综合治理白河，完善市区路网、搞好配套建设，城市功能显著增强，生态环境明显改善，市区面貌也发生了根本性变化。目前的南阳市，高楼林立，街道宽敞，绿树成荫，碧水荡漾，已成为豫西南具有较强辐射力和浓郁地方特色的现代化园林城市。

电话：0377-3167505

Nanyang Municipality

Nanyang, called Wan in the ancient times, is situated in the southwestern part of Henan Province, with the Tongbai, the Qinling and the Funiu Mountains stand on the east, west and south respectively and on her south there flows the Han River, the longest tributary of the Changjiang River. The municipality has an area of 26600 square kilometres and a population of 10320000. The central part of the municipality, which has the same name of Nanyang, — Nanyang City, has an area of 42km in its city proper and a population of 430000.

Since the removal of the prefecture and the establishment of the municipality, Nanyang Municipal Party committee and Municipal Government has increased the investment to fulfill the goal of building Nanyang City into a combination of “an afforested and historic and cultural modern city on the water”.

The Baihe River has been brought into control on an overall way and streets in the city proper are improved. With the construction of the complete sets, the city has taken on a new look. The function of the city have greatly been strengthened and the ecological environment have obviously improved. Now Nanyang City has become a modern garden city with strong local characteristics.

Tel: 0377-3167505



清阳桥全景



月亮岛一角



人民公园一瞥



新建的人民北路



杨栋材总经理



公司领导班子成员

南阳市建委租赁总公司

中国模板协会会员单位，国家大型租赁企业，南阳市建委租赁总公司，隶属于建委二级全民企业，主要经营建筑设备。大型工程机械租赁业务。现拥有全套租赁物资模板、脚手架、扣件、铁皮、机械设备等总价值1600余万元，具有规模大，品种全，质量优，服务上乘的行业优势，欢迎前来租赁。

该企业在建委直接领导和支持下，立足本市，面向全省，辐射全国的经营指导思想，按照现代化、规模化、规范化、科学化、效益化目标，努力拼搏，为国家节约原材料，为方便全市人民和城市建设做出更大贡献。

国家模板协会理事，全国先进租赁工作者、经济师，总经理杨栋材携全体员工欢迎各界人士前来洽谈业务。

总经理：杨栋材 副总经理：张栋 业务科长：吴传

公司地址：南阳市仲景北路 业务电话：0377-3203188 传真：0377-3215088

手机：1393777072 传呼：0377-126-1847257

The General Leasing Company of Nanyang Urban Construction Commission

The General Leasing Company, a member unit of Chinese Formwork Society and a large state leasing enterprise, is a Grade-Two state business under the Urban Construction Commission of Nanyang City. Its main trade range is: building equipment and large engineering mechanical leasing operation. Now it has a complete set of leasing materials like formwork, scaffold, buckles, iron sheets and other mechanical appliances, which are worth over 16 million yuan; and it has trade advantages for its large-scale, complete range of articles, excellent quality and service. Welcome here for leasing.

This enterprise, under the direct leadership of the authorities concerned, takes the city as its base, being geared to the needs of the whole province and radiating to the whole country. In line with the goal for modernization, large scale, standardization, scientism, and economical benefits, the company is trying hard to save raw materials for the country and to make greater contributions to the people of Nanyang and its urban construction.

General manager Yang Dongcai (a member of board of directors of Chinese Formwork Society, a nationally advanced leasing staff member and a business engineer), along with all the employees, is willing to meet friends of all walks here for trade talks.

General manager: Yang Dongcai Business manager: Wu Chuan

Add: North Zhongjing Road, Nanyang City Tel: 0377-3203188 Fax: 0377-3215088

Mobile phone: 1393777072

总公司办公大楼



租赁物资库区一角





法人代表、总经理：赵明云



南阳市宛城区工程建设总公司

该公司组建于1998年，是经省建设厅审定的建筑、安装、装饰三级集体施工企业，公司技术力量雄厚，机械设备齐全，年施工能力近6万平方米，是一支融工民建为一体的多技能施工队伍。

总公司下设七个土建分公司和装饰分公司、工业设备安装公司、建材经营公司、建材生产公司（窑门窗厂、预制厂、免烧砖厂、石材厂、珍珠岩厂）、建材总厂汽车旅游出租公司、盆景花木公司及艺术团等二十多个下属单位，可承办大型施工、装饰、水电暖安装、机械租赁、木门窗制作等业务。总公司拥有固定资产1216万元，流动资金550万元，技术管理人员169人，工程师16人，助工25人，技术员128人，所建工程合格率为100%，优质品率达30%以上。历年来被市、区建委评为《质量管理》、《劳动输出》、《一业为主、多种经营》等先进单位。1995年4月被省建设厅评为《安全生产》先进单位。

地址：南阳市长江路196号

电话：(0377)3127080 3127088

General Engineering Costruction Co. of Wancheng District ,Nanyang

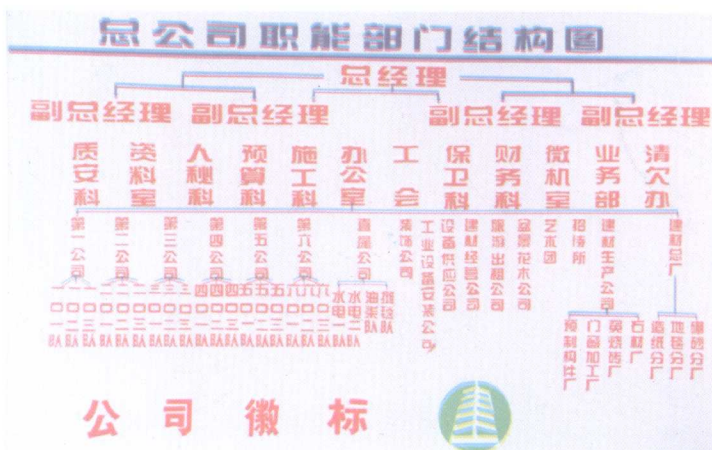
This Company ,founded in 1998 ,is a Grade III collective construction enterprise of architecture,installation and decoration which was approved by the construction Department of Henan Provice. It has a strong technical force,with a complete range of mechanical appliances;its annual construction capacity reaches about 60 thousand square meters ,a construction unit which integrates industrial and civic building as one.

The company has under its control over 20 subsidiaries:7 earthwork engineering branches ,a decoration ,an industrial equipment erection ,a building materials trading,a building materials production (including a door and window ,a prefabricated components ,a brick ,a stone materials and a pearlite factory) branches ,a general building materials factory ,a car tourism leasing ,a potted landscape and flower companies as well as an art ensemble .It can undertake large -scale construction, decoration ,water,electric and heating equipment mounting ,mechanical leasing and wooden door making businesses.Now it has fixed assets of 12.16 million yuan and floati ,a technical personnel of 169 ,engineers ,16,assistant ones ,25 and technicians ,128 .The qualified rate of finished projects is up to 100%,that of excellent quality ,over 30%.For years ,it has been chosen as Advanced Unit of Quality Management,

Labour and One Major Trade with Diversified Economy and in April,1995 ,was chosen as Advanced Unit of Safety production by the Construction Department of Henan Province.

Add:196, Changjiang Road Nanyang City

Tel:0377-3127080 3127088



南阳火车站

南阳火车站地处豫西南伏牛山南麓盆地，始建于70年2月，同年7月投入运营。自建站以来，在郑州铁路局和洛阳分局的关心和支持下，干部职工队伍日益壮大，现有885名干部职工，下设客运、货运、运转、装卸四个车间及集经、多经两个公司。一线生产班组27个。有到发线8条，调车线5条，货物线10条，专用线32条，配属调车机1台。年货物吞吐量280多万吨，旅客发送量90多万人次。该站作为豫西南对外联系与交流的重要窗口，担负着南阳市十三县市（区）的货物运输及旅客发送任务。为促进当地经济发展起到了举足轻重的作用。

以站长董建亚、书记王庚武为首的领导班子团结务实，廉洁勤政，开拓创新，带领全站干部职工坚持安全、路风、效益三大主题，以转变干部作风为龙头，大力加强干部队伍建设，强化安全生产管理，以建设一支“四有”职工队伍为目的，严格把“日常抓两纪、阶段抓重点、长期抓基础、坚持抓落实。”的二十字方针落到实处，取得了可喜成果：截至98年2月17日，车站实现安全生产十周年，创历史最好成绩。近十年来，连年获得铁路局、分局“先进党委”等多项荣誉称号，今年4月，该站又被铁道部命名为“全路先进优质车站”。



领导班子共论车站发展大计

Nanyang Railway Station

Nanyang Railway Station, founded in Feb, 1970 and put into use in July of the same year, is located in the basin at the foot of the Funiu Mountains in southwest Henan. Since its founding, thanks to the concern and support of Zhengzhou Railway Bureau and Luoyang Branch Bureau, the ranks of employees are growing stronger day by day with 885 persons. There are four workshops under its control: passenger, freight transport, transshipment, loading and unloading, including two companies. The station has 7 production teams and groups, 8 lines for train arrival and departure, 5 switching, 10 cargo and 32 special-purpose lines, as well as 1 switch locomotive. The annual volume of freight handled is 2.8 million tons, that of passengers delivered more than 900,000 person times. As an important window open to keeping in touch and interchange with the outside world in southwest Henan, the station takes the responsibility of freight transport and passengers delivery for the 13 counties and cities of Nanyang, playing a decisive role in promoting the local economy.

Headed by the station master Dong Jianya and the Party secretary Wang Gengwu, the leading group has been united to deal with concrete matters, honestly and cleanly, hardworkingly and pioneeringly in performing their duties and guiding all the employees to adhere to the three major themes of "safety, railway spirit and profit"; and by transforming the work style of cadres and strengthening the construction of the cadres ranks as well as ensuring safety in production and management, they have made great achievements: up to the closing date, Feb 17, 98, the station has celebrated its tenth anniversary of safety production, producing the best result in history. In recent years, it has been conferred many titles of Advanced Party Committee by the Railway Bureaus. In April this year, the station was again named Advanced and Best-Quality station of the Whole Railway by the Ministry Railway.



南阳火车站





河南省南阳汽车运输总公司总经理：胡逸云



南阳汽车运输总公司副总经理：王洛腾

南阳汽车站概况

南阳汽车站地处豫西南，是河南省规模较大的长途汽车客运中心站。站房建筑面积4230平方米，停车场面积6860平方米，配有多功能计算机管理系统，大屏幕电脑显示系统等现代化管理服务设备。

职工678名，日发班次1134个，营运线路154条，日客流量1.5万人次，春运高峰期达3万余人次，班线覆盖京津沪、冀陕晋、湘鄂闽、苏浙粤、豫鲁皖等15个省市156个地（市）县，1989年以来，连续八年保持省级文明汽车站荣誉，尤其1992年新任领导班子坚持以人为本，运用有效地管理手段，极大地激发了全站职工的创业热情，继1992年被交通部命名为“全国文明客运站”，开南阳公路客运服务系统之先河后，1993-1995年，又蝉联“全国文明客运站”；经济效益以年均25%的速度递增，由1992年的2500余万元上升到1996年的5000多万元。

班车有终点，服务无止境。面对竞争激烈的客运市场和时代的挑战，我们南阳汽车站全体员工誓将奉行“团结自强、尊客爱货、求实创新”的宛运精神，创造开拓新的业绩，让南阳汽车站精神文明建设大放异彩。

南阳汽车运输总公司总经理：胡逸云 副总经理：王洛腾 南阳汽车站站长：牛跃东
地址：南阳市车站南路110号 电话：(0377)3135377



南阳汽车站站长：牛跃东

Nanyang Bus Station

Nanyang Bus Station is located in the southwest of Henan Province .It is one of the largest transport centres in Henan, lovering an area of 4230 square metres ,with many functional managing system and big computer screen system.The parking place covers an area of 6860 square metres .

There are 678 working people in it .Every day the number of runs is 1134 .154 lines connect different places .During Spring Festival transportation Peak Period ,over 30,000 passengers take buses .The lines cover 156 counties of 15 provinces among Jing-jing -hu ,ji-shan-jin, Xiang -e-min ,Su-zhe-yue ,and Yu-Lu-wan etc.Since 1989 ,eight times it has been honored as "Civilized Station "in Henan Especially since 1992, the new leaders sticking to effectual managing methods has greatly inspired all the working people .In 1992 , it was honored as "National Civilized Station ".From 1993-1995 it was honored as "National Civilized Station continuously."

The economic effect increases by 25 percent every year .It has increased to 50,000,000 yuan in 1996 form the 25,000,000yuan in 1992 .

The Bus Station offers service all the time .Facing the heated market compete,we stick to the spirit of "unite and make unceasing efforts to matter-of -fact."we will try our best to make Nanyang Bus Station better.

Manager :Huiyiyun Vice General Manager: wang Luoteng
Stationmaster of Long-distanceBus Station, Mr.Niu Yaodong
Address:110 Station Road of Nanyang Tel:(0377) 3135377



微机售票室

南阳汽车站外景





迅猛发展的南阳市 县乡公路管理处

南阳市县乡公路管理处建于1995年3月。13个县(市、区)先后成立了县乡公路管理所,在乡镇也逐步建立了公路养护管理站,已初步形成市县乡三级管理网络体系。目前,全市共有县乡公路职工400人,农民代表工2000人。

1995年以来,全市总投资2.45亿元,新增公路422公里,改建、改善县乡公路1500多公里,截止目前全市县乡公路总里程达到4000多万里,实现了乡乡通公路,97%的乡镇晴雨畅通,96%的行政村通机动车,57%的乡镇通油路。

到本世纪末,将实现100%的乡镇晴雨畅通,100%的行政村通机动车,80%以上的乡镇通油路,在全市基本形成四通八达的县乡公路交通网络。

南阳市县公路管理处

处长:付中玉

书记:孙中奇

电话:0377-3127571

The Fast Progressing Nanyang Municipal County and Township Highway Management Office

The Municipal County and Township Highway Management Office was set up in March,1995.Under the office's charge,a network of Municipal,County and Township 3-level management system have begun to take shape with every county in the municipality setting up a highway management station and in many towns highway maintenance station gradually set up.

Since 1995,a total investment of 245000000 RMB yuan has been applied in the newly-built 422 km highway and 1500 km highway which have been rebuilt or improved. At present over 4000 km of County and township highways open to traffic in the municipality,thus realizing the goal that every township has bus services, 97% of the towns have all-weather bus service,96% administrative villages open to traffic and 57% of the towns have asphalt highways.

By the end of this century,all the towns will have all-weather bus services,all the administrative villages will have bus services and over 80% of the towns will have asphalt highways.In this way a very convenient highway network will be formed in the municipality.

Nanyang Municipal County Township Highway

Management office

Director:Mr Fu Zhongyu

Party Committee Secretary:Mr.Sun Zhongqi Tel:0377-3127571

南阳南都律师事务所

该所是豫西南地区规模最大的综合性律师工作机构,拥有一批中高级律师,青年律师后继有人。有多人获得全省和“全国优秀律师”称号。该所已被省体改委,省司法厅授予参与企业股改业务资格。该所有“南阳律师楼”和“南都律师公寓”,交通、通讯现代化,被省司法厅验收为省标准化律师事务所,省级文明律师事务所。该所以承办大案要案和担任大、中、企业法律顾问受到社会赞誉。最近将向社会推出“八项承诺服务”和“错案赔偿”制度,旨在更好为委托人服务。

该所主任:侯金海 副主任:樊庆文 吕专斌 李玉常

办公地址:梅溪路71号“南阳律师楼”

邮 编:473014 办公电话:3137513 3133833 3138874

A Brief Introduction of Nandu Lawyer's office

The office is the largest comprehensive legal institution of its kind in the southwestern part of Henan Province .The office has a batch of senior and middle rank lawyers ,among whom several have won the title of provincial or national advanced lawyers .the office has been granted the qualification by the Provincial System Reform Commission and Provincial Justice Department to participate in the activities of systematic reform of enterprises .The office has its own property and real estate of "Nandu Lawyer's Building "and "Nandu Lawyer's Residential Apartment Building".The provincial Justice Department ,after checking ,entitled the office "Provincial Standard Lawyer's office"for it has modernized means of communication and transportation and the ability of dealing with big and important or difficult cases .The office has been praised by all ranks of society for its qualified work in the role of being legal advisers of many large and middle -sized enterprises.In order to serve the clients better ,the office has put forward to the society ."8 service promises" and set up the system of repayment for the mistakes in sending or suing cases.

Director of the Office :Mr.Hou Jinhai

Deputy Director :Mr.Fan Qingwen, Lu Changbin and Li Yuchang

Address:"Nandu Lawyer's Building No.71 ,Meixi Road,

Tel: 3137513 ,3133833, 3138874

Post Code: 473014



主任:侯金海

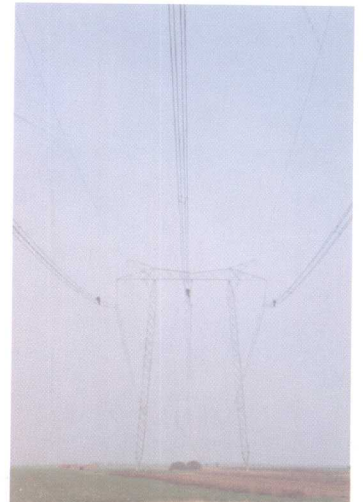
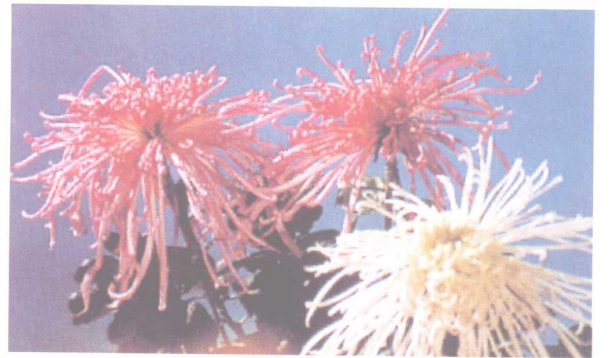


全体成员

南 阳 市



市电业局书记：杜海滨



电 业 局

南阳供电区处于华中电网豫、鄂两省水火电交接的结合部，供电面积3万多平方公里，人口1040多万。

南阳市电业局系河南省电力工业局直属的国家级大型二类企业，担负着供电区13个县（市、区）级区外泌阳、栾川二县的发、输、变、配、用电的管理工作。

南阳供电区经过近30年的建设，先后建成35千伏、110千伏、220千伏、500千伏等电压等级的输电线路3724.59公里，35千伏及以上电压等级的变电站137座，形成了纵横交错的输电线路，网织和辐射区内外15个县（市、区）。

“九五”计划期间，南阳市电业局将对电网发展加大资金投入，拟建成500千伏变电站一座，220千伏变电站5座，110千伏变电站7座，进一步扩大供电规模。南阳市委、政府以电源建设为突破口，以建设电厂作为南阳腾飞的基石，引进外资，用活内资，开工建设了鸭河口火电厂和蒲山火电厂，规划总容量近300万千瓦，计划分别到1997和1998年可并网发电。到本世纪末，南阳供电区将以鸭河口火电厂和蒲山火电厂为支撑电源，形成7个220千伏变电站的主网架。届时，南阳电网可成为一个年供电能力达百万千瓦的地方电网，南阳也将成为富电投资区。

艰苦的劳动，辉煌的业绩。“八五”期间，南阳市电业局连续4年在省局组织的双文明建设局际竞赛中荣获第一名，连续9年被华中电网，省局和南阳市委、政府评为文明单位和双文明先进单位，连续5年被省局评为优质服务先进单位。南阳市电业局以“团结、求实、创业、服务”的企业精神，为南阳经济建设做出了卓越的贡献。



NANYANG MUNICIPAL ELECTRICITY BUREAU

Located in the juncture of hydropower and thermal power between Henan and Hubei province of central China power network. The has an electricity supplying area of 30000sq.km with a population of over 10400000.

Nanyang Municipal Electricity Bureau is a state big grade-two enterprise directly under Electrical Industry Bureau of Henan province. The bureau shoulders the administration responsibility of power generating, transmitting, transforming, distributing and using for 13 counties (cities, districts) of power supply area and two counties of Beiyang and luanchuan which are out of the area.

After 30 years of construction, Nanyang Power Supply Area has successively built 3724.59km power transmission lines with the voltage level of 35kv, 110kv, 220kv, and 500kv; 137 transformer substations with the voltage level above 35kv, which formed a crossing power transmitting net work linking and radiation with 15 counties (cities, districts) of and out of the area.

During the "Ninth Five-year Plan" period, Nanyang city Electricity Bureau will put more money into the development of power net work. One 500kv, 522kv and seven 10kv are under planning to further expand power supply scale. Nanyang City committee and Government have chosen the power resources building as the breakthrough, the power plant building as the groundstore for Nanyang's prosperity, and started the construction of Yahekou Thermal Power Plant and Pushan Thermal Power Plant with planned total capacity of near 3 million kw by introducing external capital and endevning internal capital. It is expected that they can be put into operation in 1997 and 1998. Area will set up a main network frame made up of seven 220kv transformer substations, of which the Yahekou Thermal Power supporting resources, when the time comes. Nanyang power network is going to be a local power network with yearly handling capacity of nearly 1000000kw. Nanyang will also be a electricity investing area.

Glorious achievements rewards for the arduous work. During the "Eighth Five-Year Plan" period, Nanyang city Electricity Bureau has won the first prize at the "Material and Spiritual Civilization Construction Competition" organized by Electrical Industry Bureau of Henan Province in 4 consecutive years; been appraised as "Civilized Unit" and "Spiritual and Material Civilized Unit" by Central Chian Province, Nanyang City Committee and Government in 9 consecutive years; "Excellent Service Unit" by Electrical Industry Bureau of Henan Province. With the enterprise spirit of "Unit objective Pioneering and Service", Nanyang city Electricity Bureau has made remarkable contribution to the econoninc construction of Nanyang.



南阳蒲山电厂



团结务实的领导班子



中美合资南阳蒲山电厂于1997年4月12日正式开工建设,该工程是河南省“九五”期间能源建设的重点项目,一期工程装机容量为两台12.5万千瓦机组,总投资14.3亿元人民币,由美国AEP电力公司、河南省电力开发公司和南阳财务开发公司三方分别以70%和两个15%的资金比例共同合作建设。该工程项目也是国内首家利用外资而采用国产设备的电厂。

该项目的合作成功,在中美合作史上是一个创举,对此国务院总理李鹏、河南省委书记、省长马忠臣都给予充分肯定,提出以“最高的质量、最快的速度、最节省的投资和最好的投资效益”及主体工程 and 附属工程同步、厂内工程 and 外围工程同步、电厂建设和生产准备同步、电源建设和送出工程同步的“四最”、“四同步”指导思想,要求把蒲山电厂建设成利用外资办电的样板。

目前电厂已初具规模,预计98年11月第一台机组发电投入商业运行。南阳人将告别拉闸限电和结束没有自己电源的历史。充足的电力将为南阳的经济插上腾飞的翅膀。

蒲山电厂筹建处主任兼党委书记:张向元 地址:南阳市卧龙区蒲山镇 电话:(0377)-3293956 邮编:473111

A Brief introduction of Nanyang Pushan Power Plant

The Sino-U.S jointly-funded Nanyang Pushan Power Plant began to go into construction on April 12,1997.The project is a key energy construction item in Henan Province in the ninth“Five-year Plan”period.The first phase will be an installation of two 125000kw generators.The total investment will be 143000000RMB yuan provided by U.S.AEP Electricity Company,Henan Provincial Electricity Pevelopment Company and Nanyang Financial Development Company at the proportion 70%,15% and 15% respectively. The project is the first in China which utilizes foreign funds but is equipped with domestically-produced equipments.

The successful co-operation on this project is a pioneering work in the history of Sion-U.S.coopeation,Which was praised by former Premier Li Peng and Henan Provincial Party Committee Secretay Ma Zhongchen .They arked the plant to be built as a model of utilizing fands to construct power plants with the least invetment and at the highest speed to build the plant in the best quality. They also wanted to complete the main project and accessories with the same pace and while the plant is being under construction, the preparation of the production should be underway and at the same tune the transmission should be prepared, At present the plant is taking shape. according to the design,in November,1998,the first set of generator will go into commercial operation.People in Nanyang will bid farewell to the history of the limited use of electricity.Adequate Power will give a strong support to the rapid development of Nanyang' s economy.

Director and Party committee Secretary of Pwsham Power Plant Preparatory office:Mr Zhang Xiangyan The (0377)3293956
Post code:473111 s

汽机间一角

建设中的主厂房和已结顶的180米高烟囱

电厂铁路专用线

化学水处理



发展中的新野县电业局



系国营中二型企业, 现有职工 646 人其中从事多经人员 253 人, 拥有固定资产 6076 万元, 辖 14 个乡 (镇) 电管所, 8 个变电站, 2 个开关站。供应全县工农业生产和人民生活用电需要, 1996 年已实现乡乡村村通电, 1997 年实现户户通电。

在多种经营方面, 现有电力实业有限公司、电业灯具厂、白鸽面包房连锁店、电业大厦、安装公司、物资公司、检修公司等七个企业, 可生产制造高低压线路金具、铁塔、高杆灯、道路灯、庭院灯等几十种产品。

1997 年购电 27810 万 kwh, 多经产值 1023 万元, 为新野经济建设做出了应有的贡献。是县级双文明单位, 支持服务经济建设最佳单位、兴办实体先进单位、市级农电管理先进单位、连续八次被省局评为优质服务先进单位, 纠正行业不正之风先进单位、省级文明单位、省一级先进企业、省综合效益百佳企业, 部级“三为”服务达标单位、部级调度自动化、实用化达标单位、全国农村电气化县、全国节电先进县、全国电力系统“为人民服务, 树行业新风”电管站示范窗口单位。

地址: 新野朝阳路 13 号 电话: 0377-6221225

The Forging Xinye County Bureau of Electricity

The Xinye county Bureau of Electricity is a state-run second degree and medium-sized enterprise. There are 646 workers and staff members, among whom 253 are doing multiple economic management work. The bureau has 14 township electricity management stations, 8 transformer substations, 2 switching stations, supplying electricity for the need of the people and agriculture and industry. Every village began to have electricity supply in 1996 and in 1997 every household in the county began to enjoy the convenience of using electricity.

On the side of multi-economy management, the bureau has under its management Electricity Industry Limited company, Electrical lamp Factory, Baige (Dove) Bakery Chainstores, Electricity Mansion (a guest house), installation company, a Goods and Material company, a Repairing Firm, making such products as high or low voltage wires and hardwares, transmission towers, high-pole lamps, street lamps, courtyard lamps, and so on.

The bureau bought 278100000kwh electricity, gained a production value from multi-economy management work of 10230000 RMB yuan, thus making contribution to the development of the economy of Xinye county. The bureau is one of "the Best unit serving Economic Development", "Advanced Unit in setting up Economic Entities", "Advanced Unit in Managing Rural Electricity", 8-time "Quality service Advanced Unit" granted by the provincial bureau of Electricity. The bureau is also a provincial civilized unit, "First Degree Advanced Unit of Henan province", "Henan provincial 100 Top Enterprises in comprehensive Efficiency". The bureau was also granted the titles as ministry level "Advanced unit in Dispatching Autonomy and practical utilization, of Electricity", "National Rural Electrified County" and so on.

Address: No. 13, Chaoyang Road, Xinye county. Tel. 0377-6221225

新野电业大厦

