

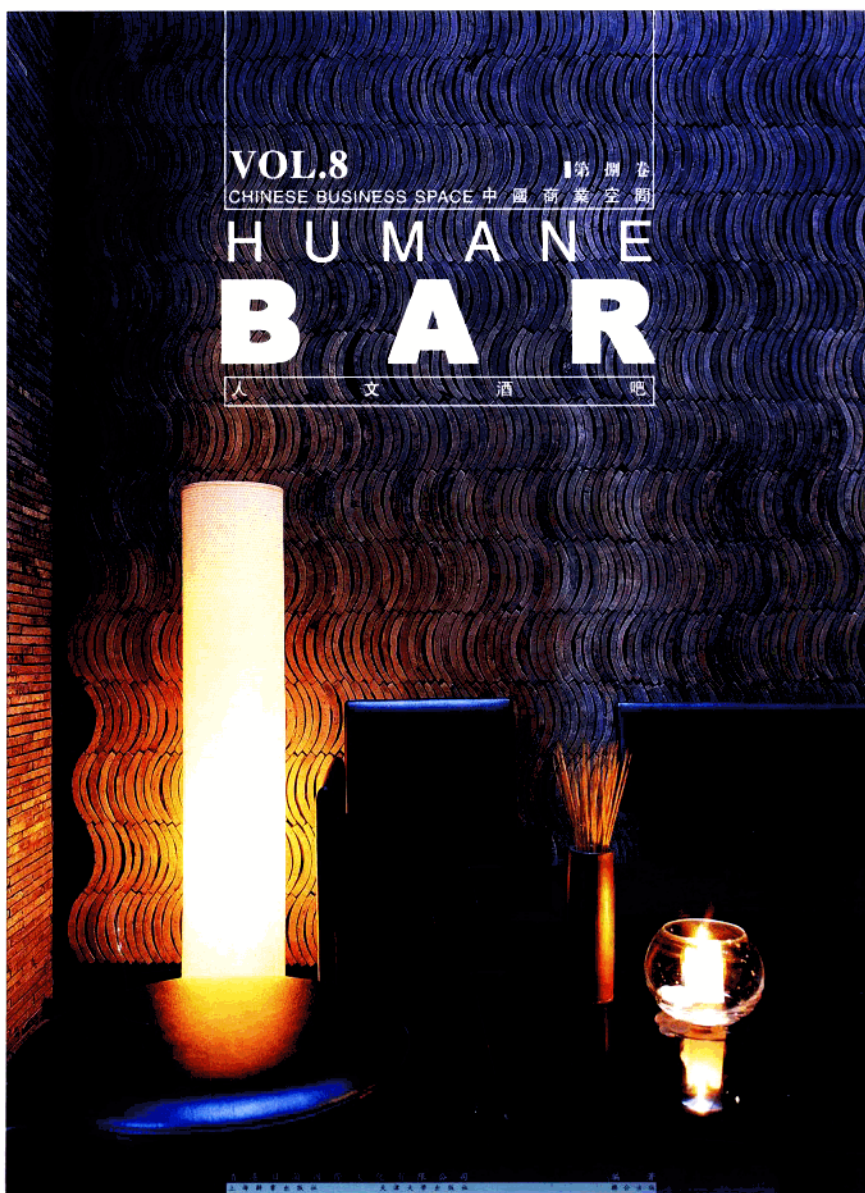
VOL.8

第 捌 卷

CHINESE BUSINESS SPACE 中國商業空間

# HUMAN E BAR

人 文 酒 吧





HONG KONG RHAN INTERNATIONAL CULTURE CO., LTD  
香港日銀國際文化有限公司 編著

VOL.8  
CHINESE BUSINESS SPACE  
HUMAN BAR  
**B A R**  
人 文 酒 吧  
PHOTO: Rhan photo studio | INSCRIPT: Sna studio | 攝影: 日銀攝影工作室 | 撰文: 日銀文化工作室

# CONTENT

目錄

008

018

026

032

044

050

054

060

068

072

078

090

094

102

120

126

132

138

144

156

162

176

184

192

200

Humane Bar	人文酒吧
Lotus Thai Restaurant	蘭蓮花泰餐吧
Smile in Pujiang	浦江笑
Buddha Bar DKD	菩薩
Royal Bar (Noble Club)	皇爵酒吧 (貴族酒吧)
Double Bay	談泊灣餐吧
True Color Bar (Guoqi Store)	本色酒吧 (國企店)
Hutong Bar	胡同寫意沙龍
Xian Bar	仙酒吧
Guandi Shanghai	上海官邸
Wisdom Wine Gallery	賢人酒廊
DR Log Bar	木頭酒吧
Long Bar	長廊酒吧
Zone Bar	ZONE 酒吧
Mima Cafe	左右間咖啡院
Zhangdali Bar	張大力酒吧
Ala Shanghai	阿拉上海
Shanghai Time	上海時光
The Country \$\$\$ Pub	鄉村多拉酒吧
Flower Street 90	花街 90
Zhaxidele Bar	扎西德勒酒吧
LOFT	LOFT
Golden Paddy Bar	金穀倉餐吧
Jianghu Club	江湖會館
AT CAFE	AT CAFE
Tense Space Coffee Bar	時態空間咖啡酒吧
NO.9 Bar	NO.9 酒吧

CHINESE BUSINESS SPACE 中國商業空間

HUMAN BAR

BAR

人文酒吧



RHAN.CN

Publisher: Rhon Xing

Compiler: Hong Kong Rhon International Culture Co., Ltd.

Add: 17/F, Xiuming Center, No.9-23, Bei Jiao Xian Ke Street, Hong Kong

website: www.rhan.cn

E-mail: rhan@21cn.com

Edit & layout: Shanghai SITA Graphic Design & Picture Studio(Tel: 13052454324)

Agent in Mainland: Shanghai Rhon Architecture Design & Consultant Co., Ltd.(Tel: 13052454325)

出版人 邢日新

編著 香港日康國際文化有限公司

地址 香港北角顯徑街9-23號秀明中心17樓

電子郵件: rhan@21cn.com 網址: www.rhan.cn

編輯和作 上海悉諾圖文設計製作工作室(業務電話: 13052454325)

國內代售 上海江蘇建築圖書書店有限公司(業務電話: 13052454325)

此为试读,需要完整PDF请访问: [www.ertongbook.com](http://www.ertongbook.com)



Humane

**Bar** 人文酒吧



---

**Humane Bar** 酒吧人文

---

# LOTUS BLUE BAR&RESTAURANT

蘭蓮花餐吧

008 PHOTO: Zhou Li | INSCRIPT Sha studio | 攝影: 周利 | 撰文: 惠曉麗 & 王世平

## Feature

Address:	Lotus Market West Street Di'an Gate, Beijing
Genre:	Boundary strong Restaurant
Theme:	Qing Dynasty in China
Main Customer:	Female, White collar, foreigners
Capacity:	200 people
Consumption Level:	Middle and high
Musical:	New jazz, House
Specialty:	International, new traditional symbol, wine, add food

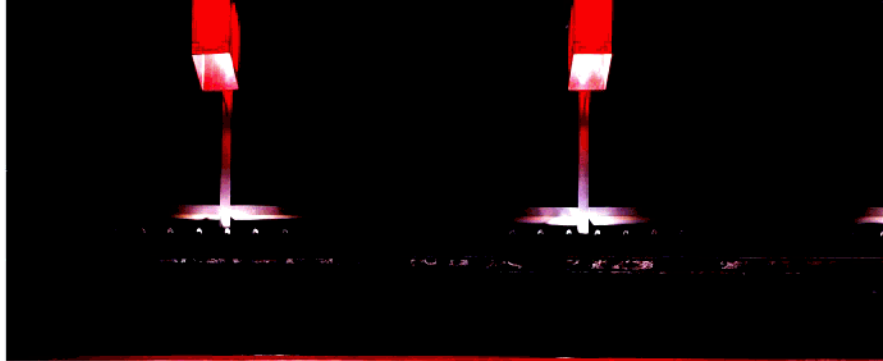
地址:	北京地安門西大街蘭蓮花餐吧
類型:	跨界餐吧
主題:	丁丁·雙輪船中西丁丁·清宮風
主要消費客群:	女性、白領、外國友人
承容量:	200人
消費層次:	中高檔
音樂:	新爵士、HOUSE、DJ風
特色:	國際化、新傳統符號、美酒、美食



There are two floors of the Lotus Blue Restaurant, which is located on the Tianhe House on the Shensha Sea, the inside and outside decoration are all made of the grey bricks and red wood frame, which makes the perfect match of the traditional and modern.

The first floor of the restaurant is under the transparent glasses cover, several arch windows on the second floor is symmetrical to the arch gate on the first floor. The red and black cloths board covers the arch door on the right side on the first floor, which is totally according to the design style of one book, make people can't help smiling. When you come in the shop, you will find that you are in the world with only red and black color, a piece of grey wall across the whole hall, there are several arch door hole in the middle, it is simple and unique. The black double desk and chairs are put in the long area which is separated by the grey wall and outer wall. Several red ceiling lights are hang in the middle of the restaurant in the grey wall, the whole bar is very bright, there are various wines are presented on the back grey wall, the red paint high foot chairs is around the bar counter. The whole first floor is harmonious with the red and black, in addition, the favoritism for the traditional Chinese style furniture, undoubtedly demonstrate the mood that the designer misses old times or old friends.

There is strong traditional breath on the second floor, the ones that does not lack of modern prevailing custom. Every arch glass windows are equipped with the white yarns, the red light above it and the pairs of green sofa, which is the dreamland for you. The area inside has many boxes, relative independences but not isolated, and enclosed with the tissue curtain parcel, the mere shadow floats, very captivating.

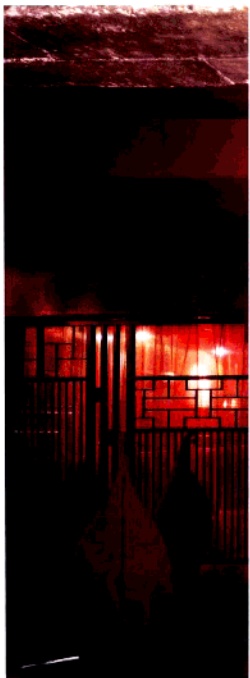




03

- 01 Main door divided into two levels, and connect with steps, the handle on the outside is special, the inside is arc glass door, there are some old wooden crafts on both sides of the stairs.
- 02 General view outside, the whole first floor set in the glass, several arc windows on the second floor set opposite to the arc door on the first floor, just like the eyes of the dining room, shine dimly light. Red and black cloth logo occupy the right side of the arc door on the first floor.
- 03 There is white shade on the arc window on the second floor, red silk palace lamp give you soft light, pairs of double sofa set under it, you can enjoy water view here, very comfortable.
- 04 Green sofa set along the window on the right side of the dining room, the separation room which covered by yellow silk on the left draw the general view of the second floor.

- 01 正門分裏外兩層，有臺階相連，外層玻璃門的把手造型奇特，內層是拱形玻璃門，臺階兩側擺放了一些樣式古老的木藤制品。
- 02 外部全景，餐吧一樓整體置于透明玻璃罩之下，二樓數個拱形窗與一樓的拱形門對稱排列，像餐廳的眼睛，透出朦朧的光來，紅黑兩色的布制店招占據一層店內最右側的一扇拱形門。
- 03 二樓的拱形窗下，有白紗為簾，紅紗宮燈籠着柔媚的燈光，其下是一對雙人沙發對桌擺放，由此可坐擁水景，不勝羨哉。
- 04 店面右側臨窗排列的綠色沙發，左側橙黃色紗櫥包裹的隔間即勾勒出二樓全景。



04

蓮蓬花餐吧共兩層，座落于什刹海之畔的天荷坊，內外裝修均以灰磚、紅漆實木架構出傳統與現代的完美結合。

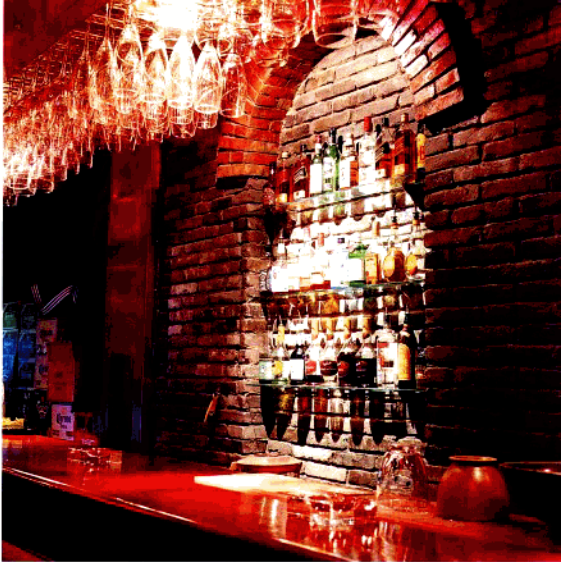
餐吧一樓置於透明玻璃罩之下，二樓數個拱形窗與一樓的拱形門對稱排列。紅黑兩色的布制店招占據一層店內最右側的一扇拱形門洞，完全依照《丁巳歷險記》的風格設計，令人不禁莞爾。一進店門就發現身處紅、黑兩色包圍的世界，正門處一道灰色磚牆橫跨整個店堂，中間數個拱形門洞，設計簡樸別致。灰牆與玻璃外牆夾隔出的長條地帶排列著黑漆雙人桌椅。灰牆之內餐吧中部，上有數架大紅色支形吊燈，下面則橫列黑漆

桌椅，間或有紅漆小幾擺于其中。餐吧靠內側的區域是長長的吧臺，整個吧臺燈光閃爍，其后的灰磚牆上各種酒類陳列得琳瑯滿目。游移吧臺的是古樸可愛的紅漆高腳木凳。整個一樓店堂紅黑相映，濃墨重彩，再加上對傳統中式家具使用的偏愛，將設計者懷舊的心情展露無疑。

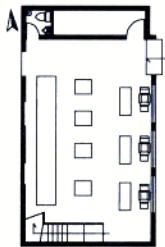
二樓既有濃烈的傳統氣息，又不乏現代風尚之美。一個個拱形玻璃窗上白紗為簾，紅燈為照，下有一對對淡綠色沙發，正是座擁前海碧波秀色的好去處。靠裏的大片店面有數個包間，相對獨立却不隔絕，其以橙黃色薄紗帷帳包裹，光影浮魅，甚為誘人。







06



1st Floor 第一層平面圖



2nd Floor 第二層平面圖

05 Bar table, red black paint wooden furniture, and everything in the room, all these shine in the golden light Chinese character

06 All kinds of the wines set in the concave space of the gray brick wall behind the bar table.

05 吧臺、紅、黑漆實木傢私，乃至室內的一切，無不籠罩在金黃的燈光之下。

06 酒架上琳琅滿目，各國美酒被置于吧臺后灰色磚牆的凹陷處。

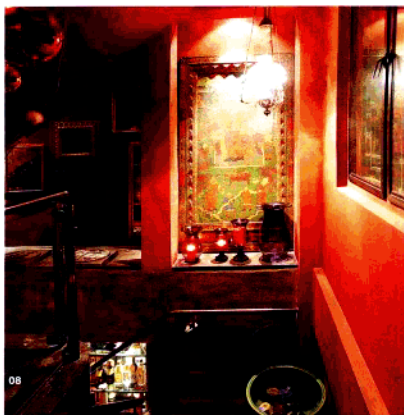


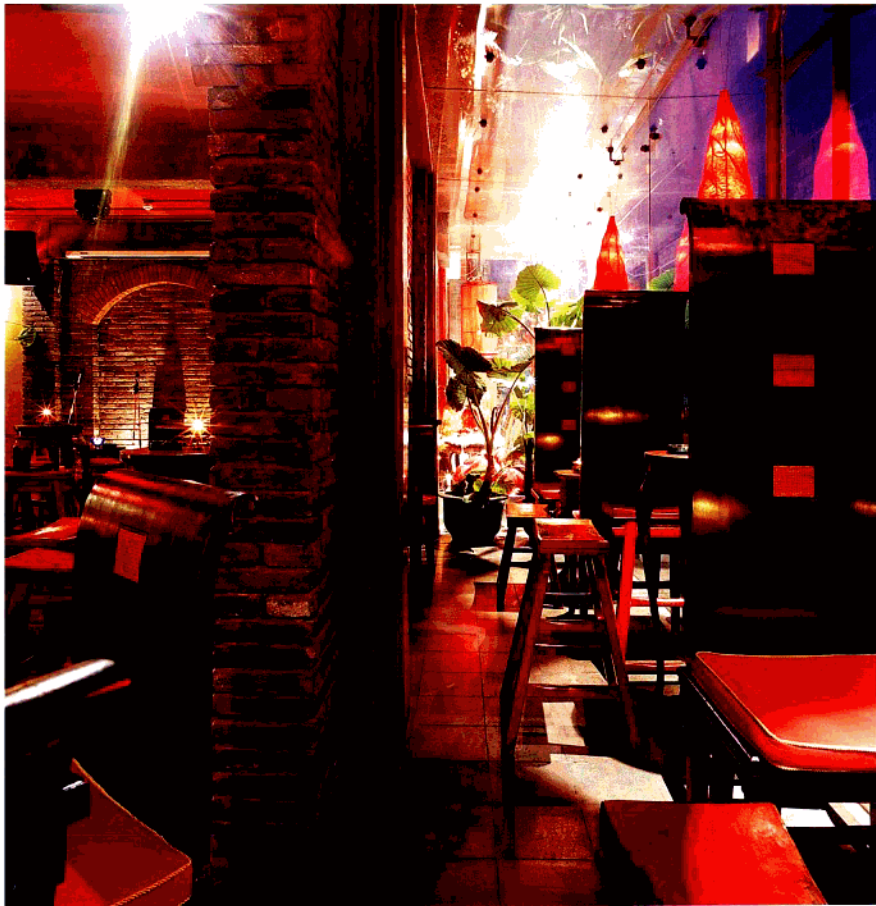
07 The hall on the first floor is open and high, the main colors are red, black and gray, not very thick.

08 In the corner of the stairs, the handle is ancient and present old character, picture frames hanging on the orange red wall, increase colorful.

07 一楼大堂敞阔，高大，色彩以红、黑、灰为主，质感并不厚重。

08 楼梯转角处，扶手色泽古雅，透出金漆味道，橘红色墙面，挂满画框，增添缤纷色彩。





09

09 There are a row of wooden tables and chairs on one side of the fallen glass on the first floor, in face the table are different forms tea table, the chairs are all black paint high back, show stable in relax atmosphere.

10 There are several arc door on the gray brick wall, connect inside and outside.

11 Golden edge minor, red paint washing pool, red above and green below wall, the tiger head copper ring handle on the golden door make the washing room different from others, show deep foreign character in

09 一種落地玻璃一側有一排木製桌椅，桌子其實是樣式各異的小幾，椅子一律是黑漆高背，輕鬆之中又見莊重。

10 一壁灰色磚牆開了數個拱形門洞，依次而立，連通內外。

11 鑲金邊的鏡子，紅漆洗手池，上紅下綠的牆面，金色門板上的虎頭銅環門把手將洗手間打扮得與衆不同，中式風格中又滲透出濃濃的異域風情。