



春江花月夜

(古 曲)

人民音乐出版社



春江花月夜

(古 曲)

人民音乐出版社

春江花月夜

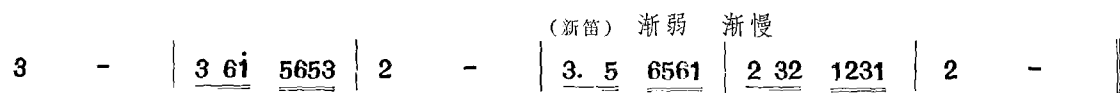
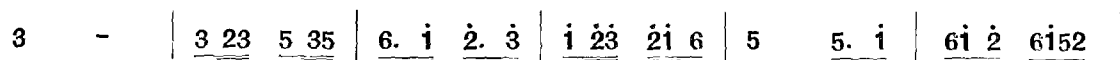
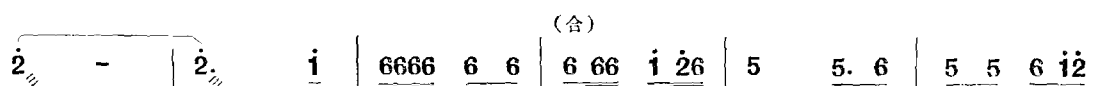
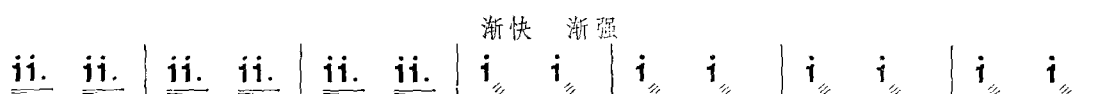
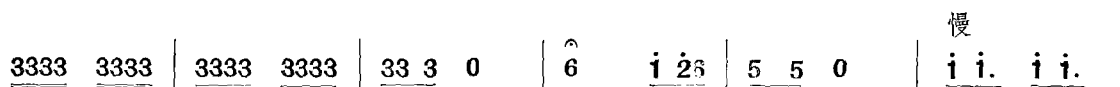
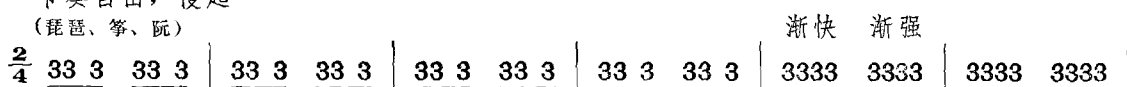
1=G

古 曲

【一】江楼钟鼓

节奏自由，慢起

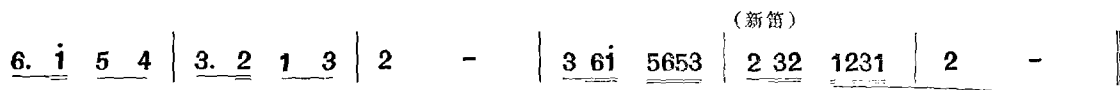
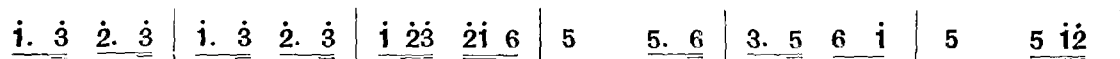
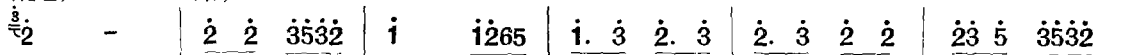
(琵琶、筝、阮)



【二】月上东山

(琵琶)

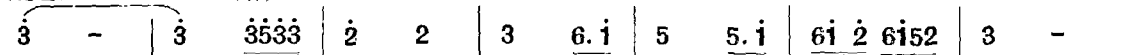
(合)



【三】风迴曲水

(琵琶)

(合)



3 6i 5633 | 2 - | 23 5 3532 | i. 3̇ 2̇. 3̇ | i. 3̇ 2̇. 3̇ | i 5 6 i | 2̇ - |
2̇3̇ 5̇ 3̇5̇3̇2̇ | i - | i i i 2̇3̇ | 6 - | 6 6 i 5 | 3.3 3 5 | 3.3 3 5 |
6. i 2̇. 3̇ | i 2̇3̇ 2̇i 6 | 5 5.6 | 5 5 6 i2̇ | 3 - | 3 6i 5653 | 2 32 1231 | 2 - ||

(新笛) 渐弱

【四】花影层叠

(琵琶) (合)
 2̇ - | 2̇. 5̇ 3̇ 5̇ | 2̇ 2̇ | 3̇ 6. i | 5̇ 5̇ | 3. 5̇ 6 i | 5̇ 5̇ |
 快
 (琵琶)
5̇6̇7̇ 6̇5̇6̇7̇ | 3̇ - | 5̇5̇6̇3̇ 5̇3̇5̇6̇ | 2̇ - | 2̇3̇5̇2̇ 3̇2̇3̇5̇ | i - |
 渐慢 (合)
i2̇3̇i 2̇i2̇3̇ | 6 - | 6i65 6i65 | 3 - | 3 23 5 35 | 6. i 2̇. 3̇ |
 (新笛) 渐弱
i 2̇3̇ 2̇i 6 | 5 5.6 | 5 5 6 i2̇ | 3 - | 3 6i 5653 | 2 32 1231 | 2 - ||

【五】水云深际

(琵琶) (琵琶、箏、阮、大胡)
 2̇ - | 2. 3 5 5 | 3 23 5 5 | 3 5 3532 | 1 6i 2 | 1 23 5 35 | 2 2 |
 (合) *tr* *tr* (琵琶、箏)
2356 2356 | 3532 1. 6 | 1 2 5 5 | 3532 1561 | 2 2̇ | i 2̇ | 6 5 | 2 3 |
 (合) *tr* *tr* *tr* *tr* *tr*
 3 - | 3 - | 2. 3 5 5 | 3532 1561 | 2 2̇ | i 2̇ | 6 2̇ | i 2̇ |
tr *tr* *tr* *tr* *tr*
 6 2̇ | i 2̇ 6 2̇ | i 2̇ 6 2̇ | i 2̇ i2̇i6 | 5 - | 5. 6 i 2̇ | 6 - |
 (新笛) 渐弱
6 6 i 2̇6 | 5 - | 5 5 6 i2̇ | 3 - | 3 6i 5653 | 2 32 1231 | 2 - ||

【六】渔歌晚唱

(琵琶) $\frac{3}{4}$ | $\dot{2}$ $\dot{3}$ | (合) $\dot{3}\dot{5}$ $\dot{2}\dot{5}$ | $\dot{3}$ $\dot{3}$ | (琵琶、新笛) $\dot{6}$ - | $\dot{6}\dot{6}$ $\dot{7}\dot{7}$ | $\dot{6}\dot{6}$ $\dot{7}\dot{7}$ |

0 $\dot{7}$ $\dot{6}\dot{6}\dot{7}\dot{2}$ | (合) $\dot{5}$ - | (琵琶、新笛) $\dot{5}\dot{5}$ $\dot{6}\dot{6}$ | $\dot{5}\dot{5}$ $\dot{6}\dot{7}\dot{6}$ | 0 $\dot{6}$ $\dot{5}\dot{5}\dot{6}\dot{7}$ | (合) $\dot{3}$ - |

(琵琶、新笛) $\dot{3}\dot{3}$ $\dot{5}\dot{5}$ | (合) $\dot{3}\dot{3}$ $\dot{5}\dot{6}\dot{5}$ | (琵琶、新笛) 0 $\dot{5}$ $\dot{3}\dot{3}\dot{5}\dot{6}$ | $\dot{2}$ - | $\dot{2}\dot{2}$ $\dot{3}\dot{3}$ | $\dot{2}\dot{2}$ $\dot{3}\dot{5}\dot{3}$ | 0 $\dot{3}$ $\dot{2}\dot{2}\dot{3}\dot{2}$ |

(合) $\dot{1}$ - | (琵琶、新笛) $\dot{1}\dot{1}$ $\dot{2}\dot{2}$ | $\dot{1}\dot{1}$ $\dot{2}\dot{3}\dot{2}$ | 0 $\dot{2}$ $\dot{1}\dot{1}\dot{2}\dot{3}$ | (合) $\dot{6}$ - | $\dot{6}\dot{1}\dot{2}$ $\dot{1}\dot{6}\dot{5}$ | $\dot{6}\dot{1}\dot{2}$ $\dot{1}\dot{6}\dot{5}$ |

3 $\underline{3\ 3}$ | $\underline{3\ 6\dot{1}}$ $\underline{5\ 0}$ | 0 $\dot{1}$ $\underline{6\ 5}$ | $\underline{6\ \dot{1}\dot{2}}$ $\underline{6\ 0}$ | 0 $\underline{6}$ $\underline{\dot{1}\ \dot{2}}$ | $\dot{1}$ - | $\underline{\dot{1}\ \dot{2}}$ $\underline{\dot{3}\ \dot{5}}$ |

$\underline{\dot{1}\ \dot{2}\dot{3}}$ $\underline{\dot{2}\dot{1}\ 6}$ | 5 $\underline{5.6}$ | $\underline{5\ 5}$ $\underline{6\ \dot{1}\dot{2}}$ | 3 - | $\underline{3\ 6\dot{1}}$ $\underline{5\dot{6}5\dot{3}}$ | (新笛) 渐弱 $\underline{2\ 3\dot{2}}$ $\underline{1\dot{2}3\dot{1}}$ | 2 - ||

【七】洄澜拍岸

(琵琶) 快 $\underline{\dot{2}\ \dot{2}}$ $\underline{\dot{3}\ \dot{3}}$ | $\underline{\dot{6}\ \dot{6}}$ $\underline{\dot{6}\ \dot{7}}$ | $\underline{\dot{5}\ \dot{5}}$ $\underline{\dot{5}\ \dot{6}}$ | $\underline{\dot{3}\ \dot{3}}$ $\underline{\dot{3}\ \dot{5}}$ | $\underline{\dot{2}\ \dot{2}}$ $\underline{\dot{3}\ \dot{3}}$ | $\underline{\dot{2}\ \dot{2}}$ $\underline{\dot{3}\ \dot{2}}$ |

(合) $\underline{\dot{1}\ 0\ \dot{2}}$ | $\underline{\dot{1}\ \dot{2}}$ $\underline{\dot{3}\ \dot{5}}$ | $\dot{2}$ - | $\underline{\dot{2}\ \dot{5}}$ $\underline{\dot{3}\ \dot{5}}$ | $\dot{1}$ - | $\underline{\dot{1}\ \dot{3}}$ $\underline{\dot{2}\ \dot{3}}$ |

6 - | $\underline{6.6}$ $\underline{\dot{1}\ 5}$ | $\underline{3.3}$ $\underline{3\ 5}$ | $\underline{3.3}$ $\underline{3\ 5}$ | $\underline{6.1}$ $\underline{\dot{2}\ \dot{3}}$ | $\underline{\dot{1}\ \dot{2}\dot{3}}$ $\underline{\dot{2}\dot{1}\ 6}$ | 5 $\underline{5.6}$ |

$\underline{5\ 5}$ $\underline{6\ \dot{1}\dot{2}}$ | 3 - | (琵琶) 慢 5 $\underline{3\dot{2}\ 1}$ | 2 0 | 5 $\underline{3\dot{2}\ 1}$ | 2 $\underline{0\ \dot{3}}$ | $\dot{2}$ 0 ||

【八】橈鸣远瀨

(琵琶) $\dot{3}$ - | $\dot{3}$ $\underline{\dot{3}\dot{5}\dot{3}\dot{3}}$ | (合) 渐快 由强渐弱 $\dot{2}$ $\dot{2}$ | 3 $\underline{6.1}$ | 5 5 | 5 $\underline{6.1}$ | 3 3 |

3 $\underline{6.1}$ | 5 5 | 5 3 | 2 2 | 2 $\underline{5.6}$ | 3 3 | 3 2 |

1 1 | 1 3.5 | 2 2 | 2 1 | 6̣ 6̣ | 6̣ 1 2 | 6̣ 6̣[^]0 |

原速

6̣ 6̣6̣ 1̣ 5 | 3. 3 3 5 | 3. 3 3 5 | 6. 1̣ 2̣. 3̣ | 1̣ 2̣3̣ 2̣1̣ 6 | 5 0 6 |

5 3. 5 | 5. 6 1̣ 2̣ | 6 1̣2̣ 1̣6 5 | 3. 5 6 1̣2̣ | 1̣6 5 3 56 | 2 - ||

【九】欸乃归舟

慢 弱

(琵琶、新笛、南胡、筝)

5 - | 5 7 | 6 6 | 6 7 6 | 5 5 | 5 6. 1̣ | 3 3 | 3 6. 1̣ |

5 5 | 5 3 | 2 2 | 2 5 6 | 3 3 | 3 2 | 1 1 | 1 3 5 |

渐快 渐强 (其他乐器渐次加入)

2 2 | 2 1 | 6̣ 6̣ | 6̣ 1̣ | 6̣ 6̣ | 6̣ 1̣ | 2 2 | 2 3 2 |

1 1 | 1 2 | 3 3 | 3 5 6 | 2 2 | 2 3 | 5 5 | 5 6. 1̣ |

3 3 | 3 6. 1̣ | 5 5 | 5 3 | 2 2 | 2 5 6 | 3 3 | 3 2 |

1 1 | 1 3 5 | 2 2 | 2 1 | 6̣ 6̣ | 6̣ 1̣ | 6̣ 6̣[^]0 |

原速

6̣ 6̣6̣ 1̣ 5 | 3. 3 3 5 | 3. 3 3 5 | 6. 1̣ 2̣. 3̣ | 1̣ 2̣3̣ 2̣1̣ 6 | 5 0 6 |

5 3. 5 | 5. 6 1̣ 2̣ | 6 1̣2̣ 1̣6 5 | 3. 5 6 1̣2̣ | 1̣3 5 3 56 | 2 - ||

【十】尾 声

(琵琶、南胡、大胡) 慢

(新笛)

渐慢

6̣ 1̣ 2̣ | 3 5 6 1̣ | 5 5 3 2 3 5 | 2 - | 3. 5 6 1̣ | 6 1̣6 5 3 5 6 | 2 3 2 1 7 6 1 | 2 3 2 1 2 3 1 | 2 - ||

