

# 慶五十年

1949-1999



1-1991

中國廈門工程機械廠

XIAMEN ENGINEERING MACHINERY PLANT, P.R.C.



# 慶四十年

何光遠

一九九一年



1-1991

中國廈門工程機械廠

XIAMEN ENGINEERING MACHINERY PLANT, P.R.C.



# 開拓

## Initiation and



黨委書記周惠康，廠長熊光敏

SECRETARY OF THE PLANT COMMITTEE OF THE  
PARTY ZHOU HUI KANG. THE PLANT DIRECTOR  
XIONG GUANG MIN.

廈門工程機械廠建於1951年11月，建廠時資產1.8萬元，6台皮帶機床，26人，其中技術人員2人，從事零星機械修配業務。1958年工廠固定資產188萬元，職工1520人，其中技術人員29人，先後生產啓閉機、打谷機、水泵、冶金設備等，成為地方通用機械製造廠。1961年歸口國家第一機械工業部第五局，開始從事工程機械製造，主要生產推土機、推土裝置、鏟運機。1963年第一機械工業部接收為直屬企業，1964年與天津工程機械研究所聯合測繪試製我國第一台Z435輪式裝

載機，至1977年共生產113台。

1978年黨的十一屆三中全會以來，在市委、市政府正確領導下，廈門工程機械廠以認真貫徹黨的路線，堅持“一個中心，兩個基本點”，通過企業內部改革和專業化調整改造，提高工藝水平，管理水平，開展社會化協作生產，先後與省內外60多家企業建立聯合生產關係，形成專業化生產的“廈工模式”。引進美國卡特彼勒公司技術，不斷開發新產品，擴大銷售市場，注重加強產品銷售服務，並在全國建立近30個產品維修服務中心，100多個銷售點，在全國形成銷售、服務網絡，期間產品出口美國、埃及等10多個國家和地區。

1985年工業總產值突破一億元，1986年裝載機年產量突破一千台，1987年全國裝載機行業中第一家進入國家二級企業，期間連續二屆評為全國設備管理優秀單位，1990年評定為國家安全級企業，廠黨委榮獲省委授予先進基層黨組織稱號。1990年固定資產7135萬元，產品產量1405台，產值1.7億多萬元，銷售收入2.3億元，利稅總額2259萬元。從1978年至1990年廈工保持持續穩定發展，13年來累計生產裝載機，推土機共

9448台，實現工業總產值11.82億元，為前26年的11.14倍，每年平均增長20.37%，上繳利稅8.44億元，為前26年的8.44倍，每年平均增長17.83%，1989年廈工進入全國500家經濟效益最佳企業行列，位於全國機械製造業第16位。1990年評定為我國機械工業50家最大經營規模工業企業之一，名列42位，福建省50家名列11位。廈工是我國生產製造輪式裝載機系列產品和輪式推土機的大型、骨幹企業。

進入二十世紀九十年代，廈工的職工弘揚艱苦創業和“三愛”“三創”的廈工精神，依靠科技進步，提高企業素質，增強企業綜合實力，為創辦國家一級企業，為產品走向世界，為發展我國工程機械和廈門經濟特區做出新成績，新貢獻。

周惠康 熊光敏





# 奮 進

## and Advancement

Xiamen Engineering Machinery Plant (XEMP) was established in Nov., 1951. At the beginning, there were only assets of 18 thousand Yuan, 6 sets of belt transmission machine tools, and 26 peoples including 2 technicians, just for the odd business of machinery repairs. In 1958, there were the fixed assets of 1.88 million Yuan, and 1520 staffs and workers including 29 technicians, for the production of sluice-opening machines, threshers, water pumps, metallurgy equipments, etc., successively. In 1961, the plant belonged to the Fifth Bureau of the First Machine Building Ministry, and began to produce the engineering machinery such as dozers, blade assemblies and scrapers. In 1963, the plant came directly under the jurisdiction of the First Machine Building Ministry. In 1964, XEMP, in association with Tianjin Engineering Machinery Research Institute, imitated the first unit of Z435 wheel loaders in China. From 1964 to 1977, the output of Z435 wheel loaders amounted to 113 sets.

Since the 3rd Session of the 11st CPC Congress in 1978, under the correct leadership of Xiamen CPC Committee and municipal government, XEMP has carried out Party's line conscientiously, upheld "one center, two basic points" improved the manufacture process and administration by means of the internal reform of the enterprise and the adjustment and transformation of specialization, developed the social cooperation production

with more than 60 enterprises inside or outside Fujian Province successively, formed "XEMP Mode" of the specialization production, imported the advanced technology from Caterpillar Inc., U.S.A. developed new products constantly, expanded market share, enhanced the service after sales, set up over 30 service centers and more than 100 sales shops forming a complete sales and service net all over the country, and exported its products to more than 10 countries and regions such as U.S.A., Egypt, etc.

The total industrial output value of XEMP reached up to 100 million Yuan in 1985. Its output of loaders reached up to 1000 sets in 1986. XEMP became the first one of the national second class enterprises among the loader manufacturers of China in 1987. During the years, the plant was appraised as the national excellent unit of equipment administration for twice sequentially. In 1990, the plant was appraised as national safety level enterprise, the plant CPC committee was named as advanced basic-level party's organization by Fujian CPC Committee, and the fixed assets of the plant reached up to 71.35 million Yuan, output 1405 sets, output value more than 170 million Yuan, total sales and revenues 230 million Yuan, both profit and tax 22.59 million Yuan. From 1978 to 1990, XEMP kept steady development, produced total 9448 sets of loaders and dozers, fulfilled total industrial output value of 1.182 billion

Yuan as much as 11.14-fold that within 26 preceding years registering an average increase of 20.37% each year, and turned over to the state both profit and tax of 844 million Yuan as much as 8.44-fold that within 26 preceding years registering an average increase of 17.83% each year. In 1989, XEMP stepped into the ranks of 500 enterprises which had the best economic benefit in China, and was situated at the 16th place among the machinery manufacturers. In 1990, the plant ranked at the 42nd place among 50 machinery industry enterprises which had the largest sales volume in China, and at the 11st place in Fujian Province. XEMP is a large-scale and mainstay enterprise to produce wheel dozers and a series of wheel loaders in China.

Since the beginning of 1990s, XEMP has promoted the spirit of building an enterprise through arduous effort and the XEMP's spirit of "3-loving and 3-creating", improved the innate quality of the enterprise based on science and technology progress, and reinforced the real strength of the enterprise. In order to found a national first class enterprise, to extend the market to the world, and to develop Chinese engineering machinery and Xiamen Special Economic Zone, XEMP will greatly strive to make new achievements and new contributions.

Zhouhuikang Xiongguangmin



在日光岩眺望廈門

LOOKING XIAMEN IN THE DISTANCE FROM SUNLIGHT ROCK.



# 鼓勵與希望

Encouraging and Hoping



中共中央政治局常委喬石同志在省、市領導陪同下視察廈門工程機械廠

QIAO SHI, MEMBER OF THE STANDING COMMITTEE OF THE POLITICAL BUREAU OF THE CHINESE COMMUNIST PARTY'S CENTRAL COMMITTEE, ACCOMPANIED BY THE PROVINCIAL & MUNICIPAL LEADERS, IS INSPECTING XIAMEN ENGINEERING MACHINERY PLANT.

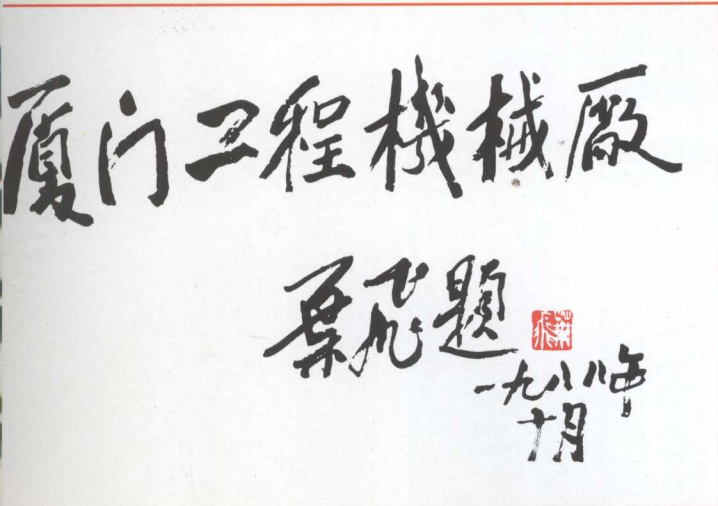
喬石  
一九九一年九月十六日





國務委員谷牧視察廈門工程機械廠  
CHINESE STATE COUNCILLOR GU MU IS INSPECTING  
XIAMEN ENGINEERING MACHINERY PLANT.

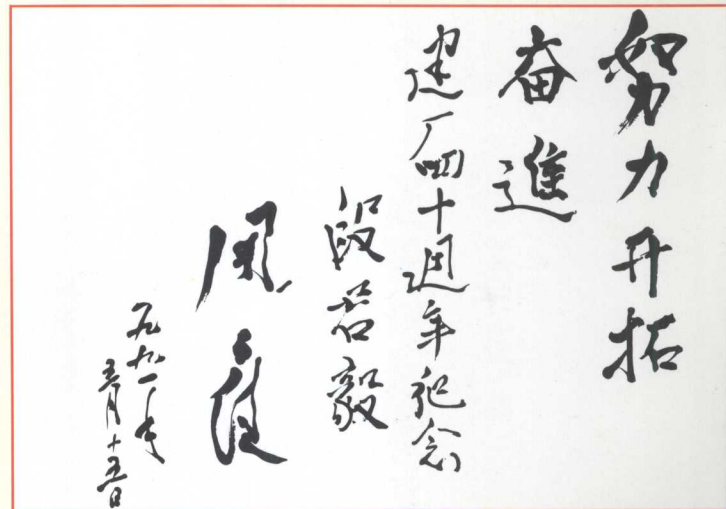
廈門工程機械廠。葉飛（全國人大副委員長）  
"XIAMEN ENGINEERING MACHINERY PLANT" INSCRIBED BY DEPUTY CHAIRMAN  
OF THE NATIONAL PEOPLE'S CONGRESS YE FEI.



中顧委常委段君毅視察廈門工程機械廠。  
MEMBER OF THE STANDING COMMITTEE OF CENTRAL CONSULTATIVE COMMITTEE  
DUAN JUN YI IS INSPECTING XIAMEN ENGINEERING MACHINERY PLANT.



國家計委顧問周子健視察廈門工程機械廠  
CONSULTANT OF THE STATE PLANNING COMMISSION ZHOU ZI JIAN IS  
INSPECTING XIAMEN ENGINEERING MACHINERY PLANT.





原機械工業部部長周建南視察廈門工程機械廠  
 FORMER MINISTER OF MACHINE-BUILDING INDUSTRY  
 ZHOU JIAN NAN IS INSPECTING XIAMEN ENGINEERING  
 MACHINERY PLANT.



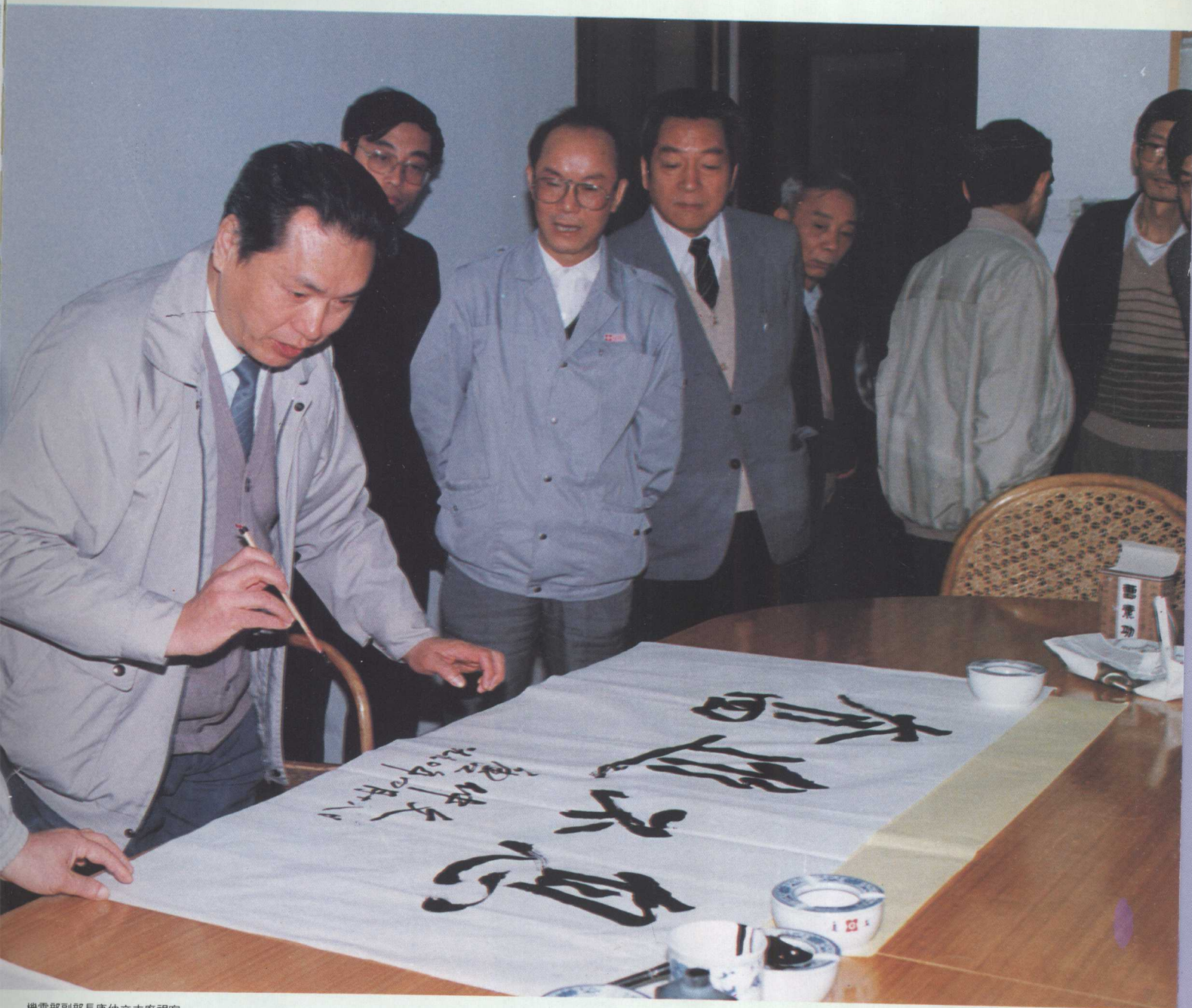
機電部副部長陸燕孫來廠視察  
 VICE MINISTER OF MACHINERY & ELECTRONICS  
 INDUSTRY LU YAN SUN IS INSPECTING XIAMEN  
 ENGINEERING MACHINERY PLANT.



機電部工程農機司司長鹿中民來廠視察  
 CHIEF OF BUREAU OF CONSTRUCTION &  
 AGRICULTURAL MACHINERY OF MMEI  
 LU ZHONG MIN IS INSPECTING  
 XIAMEN ENGINEERING MACHINERY PLANT.







機電部副部長唐仲文來廠視察。

VICE MINISTER OF MACHINERY & ELECTRONICS INDUSTRY TANG ZHONG  
WEN IS INSPECTING XIAMEN ENGINEERING MACHINERY PLANT.





省委書記陳光毅在廈門市市長鄒爾均陪同下來廠視察。

SECRETARY OF FUJIAN PROVINCIAL COMMITTEE OF THE PARTY CHEN GUANG YI,  
ACCOMPANIED BY XIAMEN MAYOR ZOU'ER JUN, IS INSPECTING XIAMEN  
ENGINEERING MACHINERY PLANT.



機電部工程農機司副司長楊紅旗和中國工程機械成套總公司總經理趙德元來廠視察。

VICE CHIEF OF BUREAU OF CONSTRUCTION & AGRICULTURAL MACHINERY OF MMEI YANG HONG QI  
AND GENERAL MANAGER OF CHINA NATIONAL CONSTRUCTION MACHINERY CORPORATION ZHAO  
DE YUAN ARE INSPECTING XIAMEN ENGINEERING MACHINERY PLANT.



厦門工程機械廠建廠40周年誌慶

發揚斥工精神，創造  
更加燦爛的明天！

石兆彬  
一九九一年



廈門市委書記石兆彬來廠視察。

SECRETARY OF XIAMEN MUNICIPAL COMMITTEE OF THE PARTY SHI ZHAO BIN  
IS INSPECTING XIAMEN ENGINEERING MACHINERY PLANT.



原機械工業部第五局局長劉贊平題詞

INSCRIPTION OF FORMER CHIEF OF THE FIFTH BUREAU  
OF MINISTRY OF MACHINERY INDUSTRY LIU ZAN PING.

慶祝廈門工程機械廠建廠四十周年  
發揚自力更生艱苦奮鬥的光榮傳  
統，堅持勇于開拓積極進取的革命  
精神，要進一步組織起來，依靠科技  
進步，走專業化協作道路，為發展工程  
機械行業為國家四化建設作出更大的  
貢獻

劉贊平敬賀  
一九九二年八月

福建省省長賈慶林題詞

INSCRIPTION OF GOVERNOR OF FUJIAN  
PROVINCE JIA QING LIN.

祝賀廈門工程機械廠建廠四十周年

開拓創新  
走向世界

賈慶林

一九九二年八月



福建省機械工業廳廳長施今偉題詞  
 INSCRIPTION OF CHIEF OF THE MACHINERY INDUSTRY  
 DEPARTMENT OF FUJIAN PROVINCE SHI JIN WEI.

廈門工程機械廠四十周年廠慶：

質量、品種、效益、行業稱雄，  
 思想、管理、科技、爭上台階。

施今偉

一九九二、六、十二

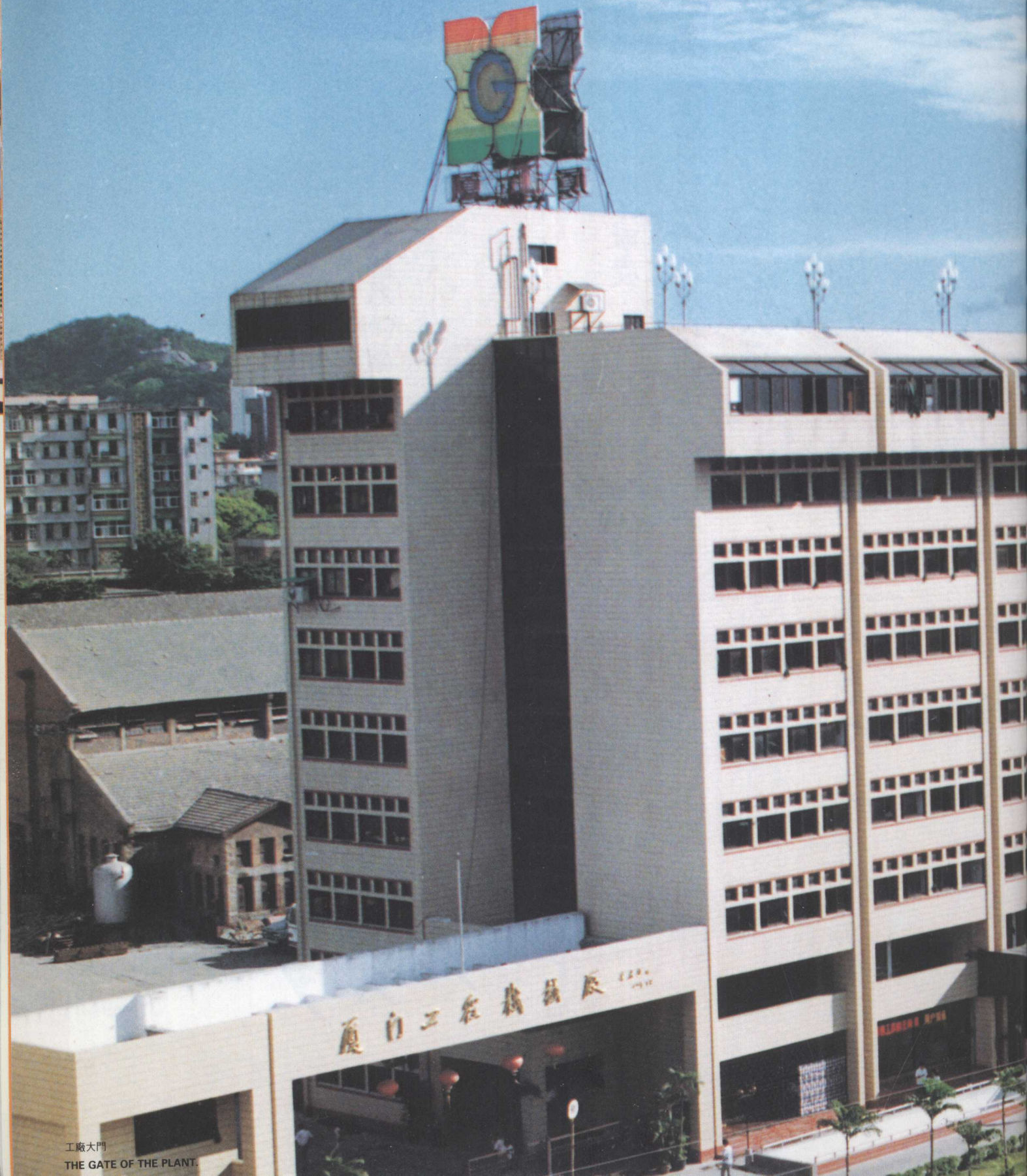
廈門市副市長李秀記題詞  
 INSCRIPTION OF VICE MAYOR OF XIAMEN CITY LI XIU JI.

加快科技進步  
 提高企業素質  
 服務全國走  
 向世界

李秀記

一九九二年九月九日





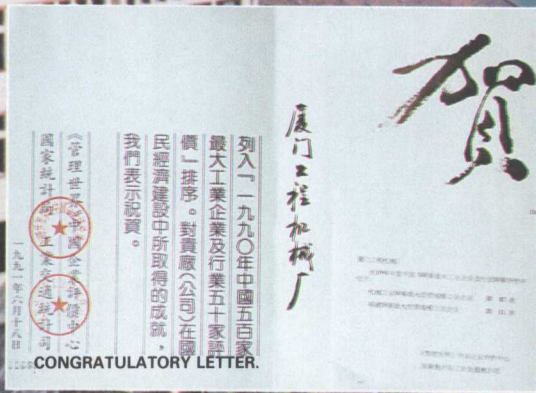
工廠大門  
THE GATE OF THE PLANT.



# 厦 工



廠領導與工程技術人員研究開發新一代產品  
THE PLANT LEADERS AND ENGINEERS AND TECHNICIANS ARE STUDYING TOGETHER TO DEVELOP NEW PRODUCTS



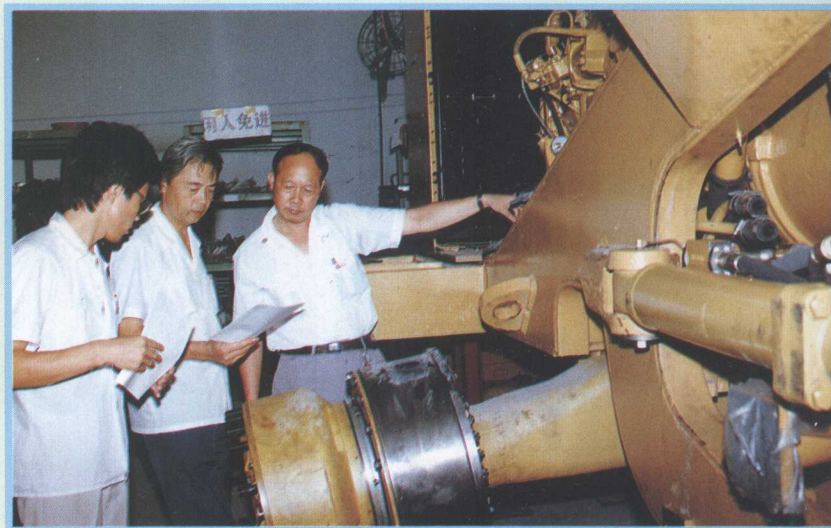
CONGRATULATORY LETTER.







工程技術人員在現場  
ENGINEERS AND TECHNICIANS ARE ON THE WORKING SITE.



工程技術人員在現場  
ENGINEERS AND TECHNICIANS ARE ON THE WORKING SITE.



設計研究  
DESIGN AND RESEARCH.



3噸的工頻電爐  
3T MAINSFREQUENCY FURNACE.

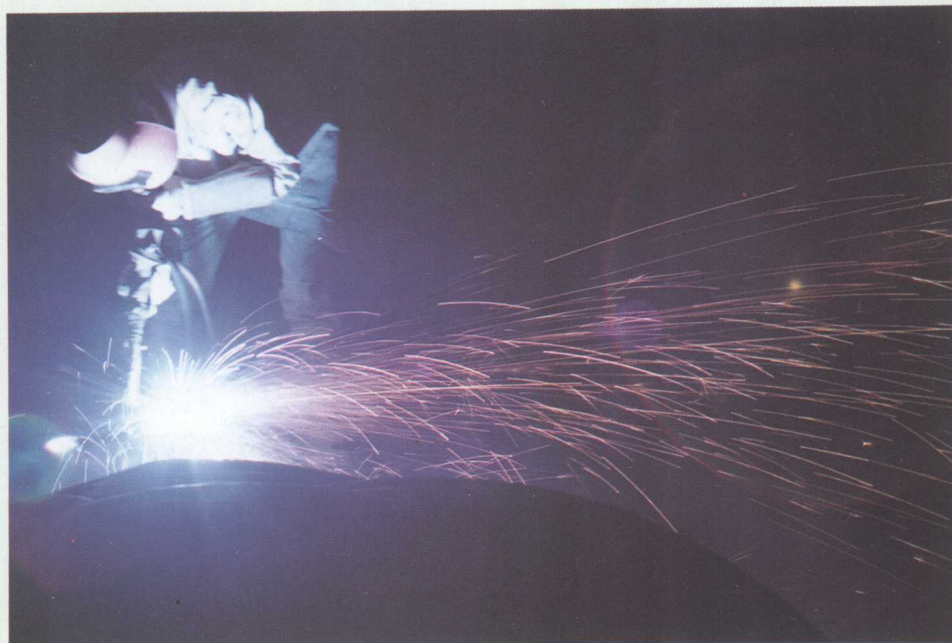


工程技術人員在現場  
ENGINEERS AND TECHNICIANS ARE ON THE WORKING SITE.

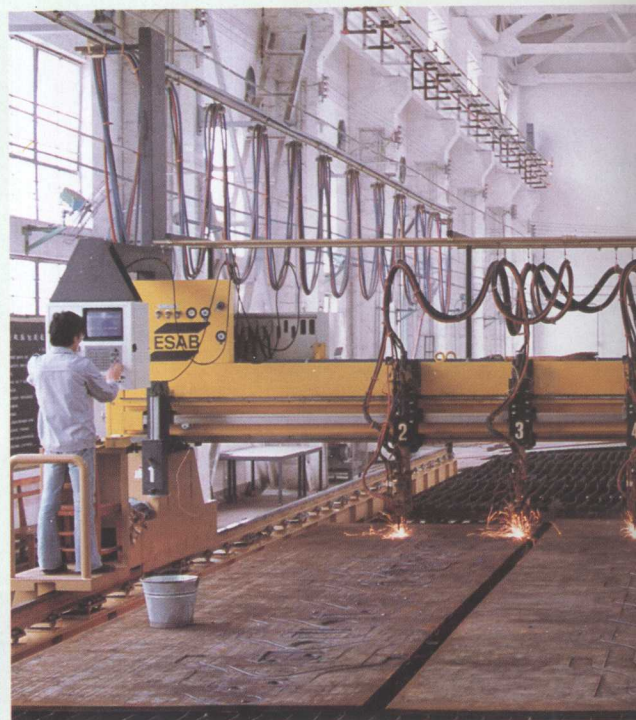
1.1萬平方米的總裝車間流水裝配線。  
THE ASSEMBLY LINE IN 11 THOUSAND m<sup>2</sup> ASSEMBLY WORKSHOP.







電孤氣刨  
ARC AIR GOUGING.



CNC 數控火焰切割機  
CNC CUTTING MACHINE.



630噸壓力機  
630T PRESS.