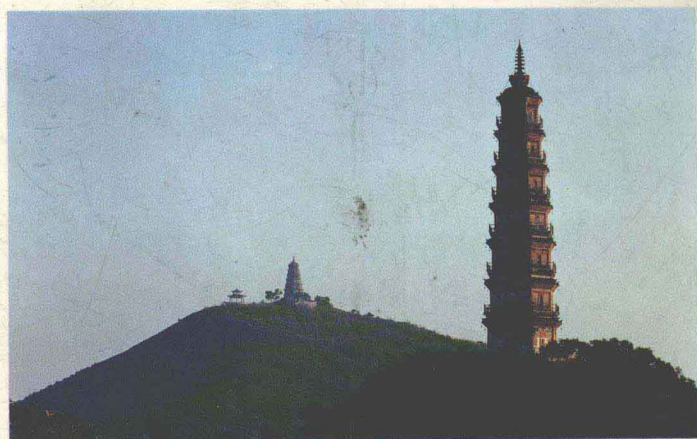


SHUNDE



順德

The Pearl of the
Pearl River Delta

—— 珠 江 三 角 洲 的 明 珠 ——

序 言

在歷史踏進二十世紀九十年代的第一個春天，我們將一部反映順德風貌的畫冊——《順德——珠江三角洲的明珠》，奉獻給為順德的繁榮昌盛作出了艱苦卓絕的努力和巨大貢獻的全縣人民和旅居海外的鄉親以及所有關心、支持順德發展的朋友們！

《順德——珠江三角洲的明珠》，着重從主要的方面將經過十年改革，開放的順德新貌，展現在人們的面前，藉以證明社會主義制度的巨大優越性，證明黨的十一屆三中全會以來改革、開放的路線、方針的英明和正確，從而更加堅定信心，進一步發揚團結、拼搏、開拓創新的精神，再接再勵，繼續前進，在九十年代創造更加輝煌的業績。

我們堅信，憑着改革開放的好政策，憑着得天獨厚的地理條件和優越的環境，憑着勤勞勇敢的90萬順德人民和近40萬熱心支持家鄉建設的華僑，港、澳、台同胞的共同努力，奮發進取，順德這顆明珠將會變得更加絢麗多彩！

FOREWORD

This is the first Spring of the new and last decade of the twentieth century, we take pleasure in presenting this picturesque book to those who have lived here or abroad, but have worked, supported and contributed in different ways and so much to the prosperity of this place, "The Pearl of the Pearl River Delta - Shunde".

"The Pearl of the Pearl River Delta - Shunde" has went through ten years of reform. Now, a free place with a brand new outlook, facing us is the proof of the advantage of socialism, showing that the open system adopted after the Eleventh of the Third Plenary Session is a correct and smart approach. Confidence, togetherness, striving force and spirit will continue to make this new decade better and brighter.

We are positive that with the continuation of the open policy, the unique condition and environment of its geographic location, the hardwork and support of the nine hundred thousand residents, and four hundred thousand patriots living in Hongkong, Macau, Taiwan and overseas, Shunde will shine even brighter.



水鄉春色

葉其嘉作

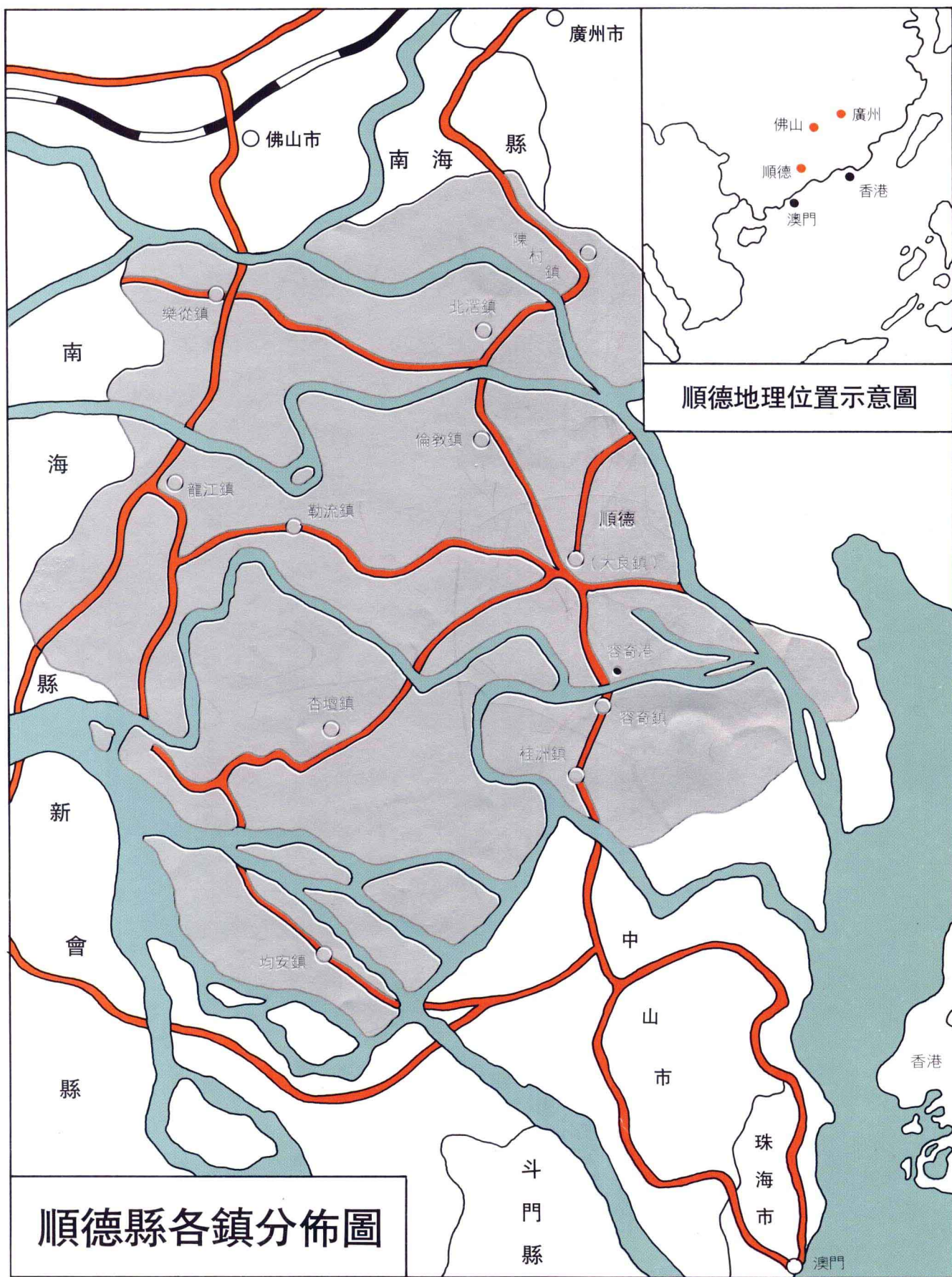
順德之海

光輝燦爛

任仲夷
五月
十一日

廣交天下客

雄
元
元
元



情懷萬古譜寫九十

順德縣縣長 陳用志

歷史的航船乘風破浪，剛剛走完了二十世紀八十年代的航程，又昂然進入了九十年代的新里程。

站在歷史與未來的交接點上，回首過去，令人激動奮發。在過去的十年，順德縣乘着改革開放的東風，充份發揮“天時、地利、人和”的優勢，經濟和社會各項事業取得了人令人矚目的成就。在經濟建設方面，我們在原來以製糖、蠶絲為主的傳統工業基礎上，發展了家電、塑料製品、機電、建材、紡織、食品等現代工業和商品率較高的現代農業，通過引進國內外先進技術設備，推廣採用最新的科技成果，使我縣的工農業生產達到了一個新的水平，生產力大大提高。1989年全縣工農業產值達到58.48億元，比1980年增長了4.8倍，提前實現了國家提出的翻兩番的目標，順德縣經濟的發展，不但表現在幅度上，還反映在建立起了外向型經濟的經濟格局上。除建設了一批生產、出口產品的工廠和農業商品基地外，還興辦了合資合作企業337家、外商獨資企業5家、“三來一補”企業381家。1989年全縣工農業產品出口值達二十多億元人民幣，出口創匯近三億美元，標誌着我縣經濟正邁步走向世界市場。

在經濟發展的同時，順德縣各項社會事業的建設都取得了長足的進展，社會安定，治安良好，市場繁榮，城鄉建設面貌日新月異，教育、科技、文化、體育、衛生事業都取得顯著成就，受到了國內國外的好評。

順德各項建設取得的輝煌成就，離不開旅居海外和港澳台同胞的熱情關心和鼎力支持，他們不但積極回鄉投資辦企業，引薦外商到順德辦實業，做生意，熱情扶持家鄉經濟的發展，還慷慨捐輸家鄉建設，據不完全統計，十年來捐贈錢物總值達3億多港元，支持興辦各種社會公益事業。順德的每一個成就，都蘊含着旅外鄉親的努力。

經過十年改革開放的順德，已經形成優越的投資環境、水陸交通方便，航道、公路成網，內通各村鎮，外通港澳和附近城市，對外口岸容奇港，設備完善，客貨運輸均可直通香港，通訊快捷，城鄉用上程控電話，可直接與國內各大城市及世界150多個國家和地區通話，還擁有移動電話傳呼機、電傳、郵政速遞等現代通訊手段；服務設施好，眾多的賓館，酒店，可提供食、住、玩等良好服務，水電充足，生產、生活用水用電可敞開供應；政策優惠，縣製訂了鼓勵外商投資和發展“三來一補”業務的優惠政策，我們熱誠歡迎廣大華僑、港澳台胞和外國商人來順德投資，經商。

九十年代，是一個嶄新的年代，也是一個充滿希望的年代，我們有繼續改革開放政策的指引，有上一個年代打下的基礎，有眾多旅居海外鄉親的支持，有得天獨厚的投資環境，有九十萬人民努力，我們完全有可能在今後的十年裏，實現經濟和各項事業再上新台阶，譜寫出九十年代的新篇章！

華 新 篇 章

Head of the County of Shunde

Chen Yongzhi



A NOTE OF THE NINETIES FOR THIS VERY OCCASION

History sails on, just completing her voyage of the eighties, we have entered into the new era of the nineties.

Standing at the point between history and the future, the past was encouraging. In the past ten years, Shunde has achieved great success in economy and other social matters following the change of the revolution, and together with the overall timing, climate, location, environment, people and harmony. In economy, we have based mainly on our traditional industries sugar and silk reeling, and have developed into other modern industries such as home appliances, plastic products electrical machineries, building materials, textiles, food and modern agriculture. All these were achieved by importing advance technology and equipments, bringing our productivity to a new level. The total agriculture and industry production value for 1989 was \$58.48 billion, increased 4.8 times compared to 1980. Realized the target of "doubling two times" set by the Country. Shunde not only has a good performance in the economic development, but also reflected an outgoing economic set up. Besides the establishment of number of production and export factories and stations for farm products, has also formed 337 joint venture operations, 5 foreign investment enterprises, and 381 enterprises dealing in "compensating trade".

The total export value of industrial and agricultural products for 1989 amounts to over RMB 20 billion. Export value was close to US\$ 3 billion, well demonstrating that our economy is running

towards the world market.

At the same pace as the economic development, other social matters have moved ahead. Order in the society, a prosperous market, new constructions have given the place a new look. Other remarkable achievements have been made in education, technology, culture, sport and health.

All these achievements of Shunde would not be possible without the strong support and contribution of the fellow countrymen living overseas, in Hongkong, Macau and Taiwan. They have actively participated in the investment of enterprises, introduced foreign investors to Shunde, and trade. During these ten years, they have donate over 3 billion Hongkong dollars, supporting and operating all kinds of welfare activities in the society. Every bit of success of Shunde owes to her people here and abroad.

Shunde has become an ideal investment place after ten years of reform. Both land and sea transportation are very convenient, a good network of route and road connecting all cities and towns in China, to Hongkong, Macau and other neighbouring cities. Rongqi port is fully equipped and has direct connection to Hongkong both for passengers and cargo. Fast communication, direct telephone connection with all major cities of the Country and over 150 countries and places in the world. Modern communication facilities such as mobile phone, pager, telex, speed post, etc are available. Well equipped with modern service facilities, plenty of motels and hotels, providing meal, accommodation and entertainment. Sufficient water and electric supply, for production and daily use. Favourable terms to encourage foreign investors and compensating trade. We whole heartily welcome fellow countrymen from Hongkong, Macau and Taiwan, and foreign business people to invest in Shunde.

The nineties is a new decade, with plenty of hopes for the future. We will continue our reform, with the guidance of governmental policy, with the foundation lay in the last decade, the support of fellow countrymen overseas, our unique investment environment, the hardwork of nine hundred thousand people, we are sure that we will be able to set new records in economics and other matters, and write a new chapter for the nineties.

順德概況

順德自明朝景泰三年（公元1452年）正式建縣以來，一直躋身於國內經濟、文化發達地區之列，素有“魚米之鄉”“南國絲都”的美譽。

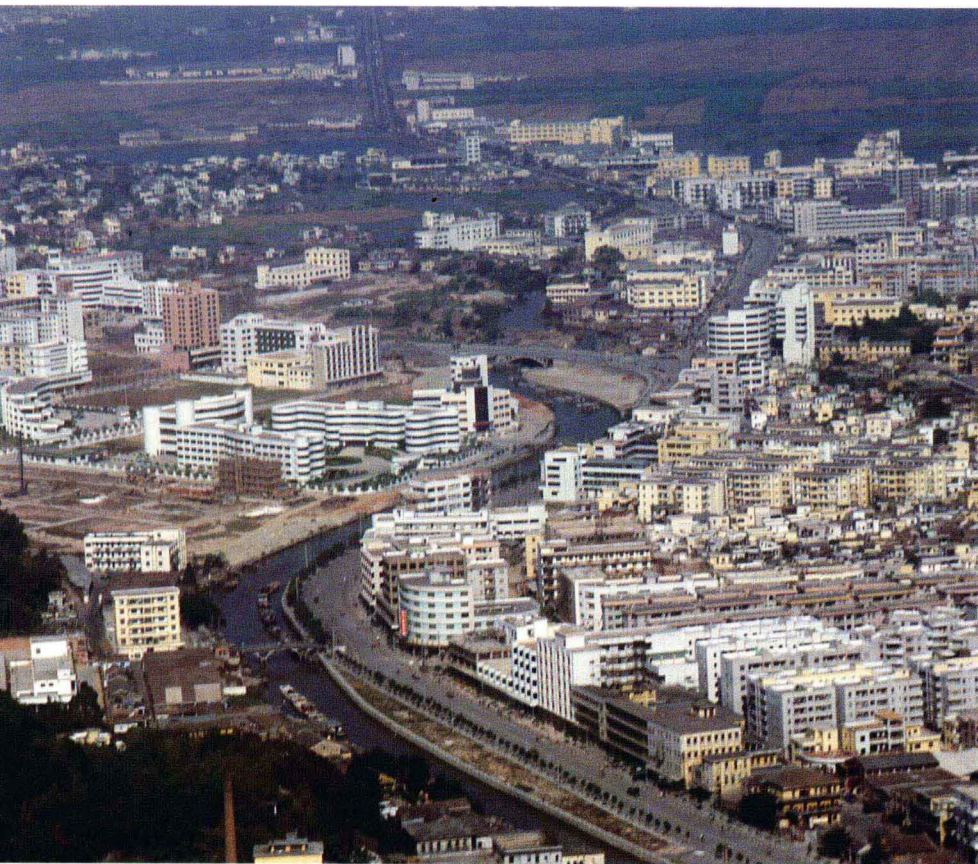
順德縣位於珠江三角洲的中部，北回歸線以南，在東經 $113^{\circ}1'$ — $113^{\circ}23'$ 之間，屬於亞熱帶海洋性季候風氣候，全年日照時間長，雨量充沛，氣候溫和；北鄰廣州、佛山37公里，東南距香港69哩，澳門80公里；廣（州）湛（江）、廣（州）珠（海）兩大公路幹線縱貫全縣東西兩側。地理位置和自然條件十分優越，水陸交通極為便利。

順德縣面積806平方公里，人口90萬，旅居世界53個國家和地區的華僑、港、澳、台同胞近40萬人。全縣下設十一個鎮，220個邨。縣城大良鎮是全縣政治、經濟、文化的中心。

順德屬珠江三角洲冲積平原地區平原佔全縣面積的80%以上，地勢西北略高，東南稍低。境內河涌交織，魚塘星羅棋佈，土地肥沃，適宜各種農作物生長。順德現有耕地面積68萬畝，盛產塘魚、甘蔗、蠶桑、稻穀、香蕉、花卉等經濟作物，商品農業比較發達。

實行改革開放以來，順德縣充分運用中央給予廣東的特殊政策和優惠政策，積極引進國內外先進的科學技術、設備和人才，加快基礎設施的建設，努力改善投資環境，大力發展外向型經濟，工業、農業、商業、科技、教育、衛生、文化、體育等事業得到了蓬勃發展。特別是工業，近年更是突飛猛進，一日千里，成為順德經濟的支柱。它從原來的繅絲，製糖發展成為一個門類比較齊全的工業體系。目前，全縣已擁有家電、機械、燃氣用具、製糖、紡織、繅絲、塑料製品、飲料、電子、建材、服裝、化工、食品、傢俱等十多個行業。1989年，全縣工農業總產值58.48億元，比改革開放前的1978年增長6倍。





CONDITIONS OF SHUNDE

Since Jingtai third years of the Ming Dynasty (1452 A.D.), Shunde was formally made a county, and was part of the Country's economy and cultured area. Known as "The Land of Plenty" and "Silk Capital of the South".

Shunde is situated at the middle of the Pearl River Delta, south of the Tropic of Cancer, and between longitudes 113° 1' — 113° 23'. Belongs to the sub-tropical oceanic type of climate, with longer days all through the year, plenty of rainfall, warm and mild climate. To her north is Guangzhou, 37 km from Fushan, the two major highway, Guangzhou-Zhanjian and Guangzhou-Zhuhai runs through the east and west side of the County. Favourably located geographically and natural conditions, both land and water transportation are very convenient.

Shunde county has an area of 808 square miles, with a popula-

tion of 900,000. Population of countrymen living abroad in over 53 countries and places, Hongkong, Macau and Taiwan is closed to 400,000. There are 11 towns in the County, and 220 villages. Daliang is the capital of the County where all the political, economics and culture are centered.

Shunde is part of the deposit of the open land on the Pearl River Delta, taking up 80% of the total area. The northwest area is slightly higher, whereas the southeast area is lower. Small rivers run through the entire area forming fish ponds all over the place, the soil is very fertile, and is suitable for all kinds of agriculture. Shunde at present has a total of 68 acres of cultivated land, produces a lot of fresh water fishes, sugar cane, mulberry, rice, banana, plants, etc. with more agricultural products.

Since the start of the open policy, Shunde has been enjoying the special and privileged policies grant to Guangdong by the Central Government. She has

imported domestic and foreign advance technologies, equipments and qualified personnels. Expedite the construction of basic facilities, improving the investment environment, worked towards the goal as a outgoing economic place. Businesses such as industries, agriculture, commercial, technology, education, health, culture, sport, etc. have been developed, especially industries which has progress tremendously in recent years, becoming the financial support of the County. The original industries of silk reeling and sugar making have been developed into a more complete system.

At the moment, the entire County has the following industries: home appliances, machineries, burning equipments, sugar making, textiles, silk reeling, plastic products, beverage, electronics, building materials, fashion, chemical products, food products, furnitures, etc. In 1989, the total industrial and agriculture production value was \$58.48 billion, which has multiplied by 6 times compared to 1978, before open foreign policy.

明珠耀四海

順德，歷史上就以“魚米之鄉”“南國絲都”的美譽名聞遐邇。改革開放以來，她更以經濟和社會各項事業迅猛發展的驚人成就為人們所矚目。

現代化的進程和對外開放，正在把順德推向世界。愈來愈多的外國朋友、旅居海外的華僑，港澳台同胞、鄉親紛紛前來訪問、考察和從事經濟活動。每年，順德也派出人員到國外考察和開展經濟、技術交流。這些友好的交往，使更多的人認識了順德，使順德人開闊了視野，更加堅定了建設四個現代化的決心和信心。

明友遍五洲

WORLDWIDE COMMUNICATION

Shunde, from ancient days has always been "a land of plenty" and "the silk capital of the south". With the open policy, she has progress tremendously in economy and other aspects, and her achievement is remarkable.

Modernization and the open foreign policy has place Shunde with the rest of the world, the place is frequented by foreign visitors and fellow countrymen from Hongkong and Macau. Every year, Shunde has her own delegates travelling abroad for research, economic and technology activities. These have made Shunde better known to the outside world, and to the locals broader views, strengthening our confidence and determination in the four steps to modernization.





柬埔寨國家元首西哈努克親王在順德



阿努瓦圖共和國總統參觀桂洲風扇廠



國務院經濟、旅遊顧問，新



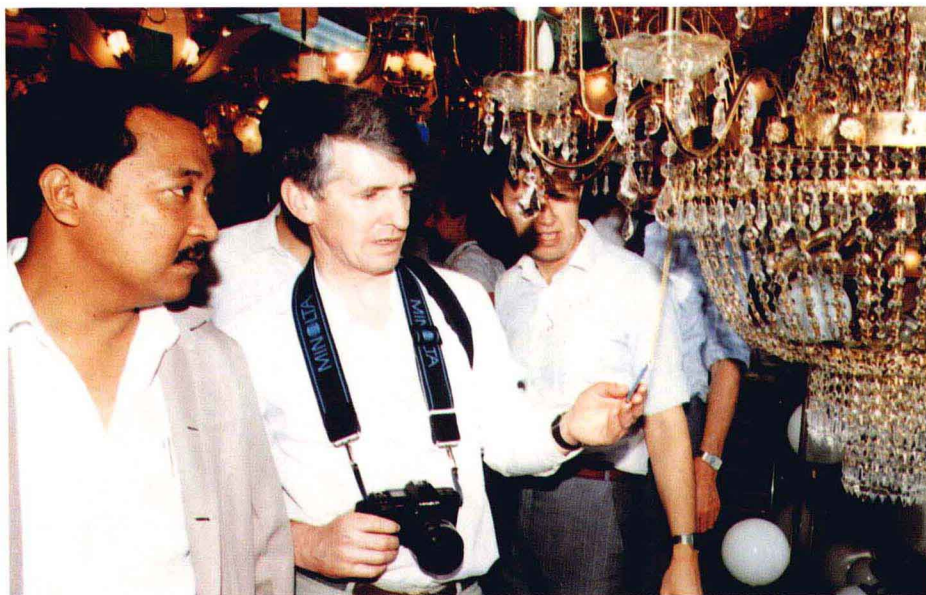
墨西哥總統在陳村鎮花卉研究所參觀



貝寧共和國總統在龍江鎮參觀養魚業



巴西議長盧塞納在順德



各國駐香港外交官在桂洲鎮考察



前副總理吳慶瑞參觀順德工業



勒流鎮飼料工業考察團在美國考察



順德能源考察團在法國考察發電設備



順德農業考察團在日本
考察機械化的水稻生產

順德外經貿考察團在泰國考察養蠶業



順德工業考察團在法國考察工廠



美國客商在桂洲風扇廠看樣訂貨

香港環境地政司、經濟司官員來順德考察



霍英東等中華總商會同仁向順德縣領導互贈錦旗





香港工業署長鮑明訪順德



美國農業部長助理柯文程在順德考察



愛爾蘭貴賓在陳村鎮花農家作客

