

狂飚突进 新跨越

同安工业集中区建设纪实

Strive Forward - Record of Construction of Tong'an industry concentration area



厦门市同安工业集中区建设指挥部
厦门市建设与管理局

狂
随
突
进

新
跨
越



开篇语

Preface

省委书记卢展工批示：重点建设已经展示了其在项目带动中的率先作用，在产业支撑中的骨干作用，在海西建设中的基础作用，在落实科学发展观中的持续和提升作用。实抓几年，必有成效。

新世纪的年轮标刻在2005年，福建省委、省政府，厦门市委、市政府审时度势，作出了“建设海峡西岸经济区”和推进“新一轮跨越式发展”的战略决策，正是对国内外经济态势的科学论断和精确把握，为再创新优势的厦门经济特区注入了强劲的动力。

以发展现代工业为重点，壮大第三产业，提升第一产业，促进三个产业在更高层次上协调发展，厦门市委、市政府为抢占经济发展先机，作出果断决策，集中优势资源，在银城西山脚下，建设“同安工业集中区”，为厦门经济特区成为海峡西岸最活跃的经济区域拓展了广袤的空间。

同安工业集中区的建设，对工业产业的集聚、制造业的腾跃、现代服务业的提升、中心城市辐射功能的加强，将产生“启动器”和“吸附器”的集群效应。

这确实是厦门工业发展史上高起点、大手笔的鸿篇巨作，其规模之大、建设之快、质量之好空前罕有。如果说，湖里工业区是厦门改革开放的标志，那么，同安工业集中区的建设以及将产生的巨大的综合效益，则会在厦门工业文明史上留下令人赞叹的奇迹。

把蓝图变为现实，是一场攻坚克难的硬仗。同安工业集中区的建设者们，为了那份光荣的使命，以生命的力量不间断地掘进，狂飚突进地推进工程建设。骄阳似火、风雨如磐、黄沙怒卷、顽石挡道，建设者们没有在横亘的困难面前退却，他们用溅落的汗珠、拼搏的热情浇铸了厚实的地上长虹。500多个日日夜夜，一座巍巍工业新城以全新的姿容屹立在蓝天之下、大地之上。

限于篇幅，遗憾不能对建设中的细节从容地描述，但冬的冷月，春的细雨，夏的烈日，秋的和风，已经记住了工程决策者和建设者们的感人故事。

轰轰烈烈的建设场景如此感人肺腑，又如此振奋人心。为全方位、多侧面反映同安工业集中区建设成果，弘扬建设者的创业精神和拼搏激情，厦门市建设与管理局编撰了画册《狂飙突进新跨越—厦门市同安工业集中区建设纪实》。

画册的出版，虽然只是采撷奔涌大海中几朵跳跃的浪花，但一滴水中见太阳，她折射出风雨创业路上行进的脚步和不畏艰难的宝贵精神之光，触摸这段历史跳动的脉搏，留下隽永的记载。

黄诗福

The secretary of Fujian Provincial Party committee, Lu Zhongong said, key projects have played the pioneer role in stimulating other projects, very important role in supporting industries, and the foundation role in the construction of western bank of Taiwan strait of, maintaining and promoting the implement of scientific development view. We will benefit from enhancing the key projects.

New century attaches special attention to the year 2005. Fujian provincial Party committee and provincial government, Xiamen municipal Party committee and municipal government made a strategic decision on constructing a western straits economic zone and enhancing a new round of great-leap-forward development. The scientific assertion on the world trend and the keen insight on economic development provide Xiamen Special Economic Zone with new advantage and tremendous drive.

With the development of modern industry as the key, the third industry and first industry will be improved at the same time, so as to promote the three industries develop harmoniously at a higher level. To seize up the opportunities of economic development, Xiamen municipal government made decision. That is concentrating advantage industries at the foot of Xishan Mountain. Thus, Tong'an industry concentration area was set up. Providing Xiamen Special Economic Zone with wide space, Tong'an industry concentration area made it to be the most active economic region in the western bank of Taiwan strait.

Tong'an industry concentration area contributes a lot to the industrial congregation, manufacturing industry, modern tertiary industry and the radiation function of the city.

The construction of Tong'an industry concentration area starts at a high level. The big scale, short completion time of project and good quality are scarcely seen in the history of Xiamen industry. If we say Huli Industry Park is the symbol of the reform and opening up of Xiamen, Tong'an industry concentration area and the tremendous benefits it will bring will be a miracle in the history of Xiamen industrial development.

It is a rough task to turn the blueprint into reality. The erectors struggled hard to finish the project for that honorable mission. Despite the scorching sun, the drenching storm, the lapping sand and the hard stone, erectors challenged themselves and overcame the difficulties with their sweat and passion over and over again. After over 500 days and nights, one grand industrial concentration area stood up on this land. It is a pity that the details can not be told because of the limited length of the passage, but time has remembered their impressive stories.

The construction site was so moving, but at the same time it was inspiring. To record the fruit from all directions and carry forward the innovation spirit, Xiamen Construction and Management Bureau composed the album---"Strive Forward —Record of Construction of Tong'an industry concentration area".

Although not all examples are recorded in the album, the whole process can be seen from these examples. The album records the footprints on the enterprising road and the light of enduring spirit. It touches the impulse of this history for the commemoration of the later people.

新跨越
狂飚突进



高屋建瓴
Decision Making

◎ 省委书记卢展工在厦门考察工业集中区建设

2005年5月21日，福建省委书记卢展工在厦门市领导干部会议上，从全局的战略高度，要求厦门市在海峡西岸经济区建设中发挥龙头作用。

同年7月，厦门市委九届十次会议，向全市人民发出扎实推进“新一轮跨越式发展”号召，明确提出以发展工业为重点的经济发展战略，要求抓好工业集中区载体建设，作为实施新一轮跨越式发展的突破口。

经过反复论证、规划，同安工业集中区选址于324国道以南、同集路以西、规划纵三路以东、规划新324国道以北的区域，规划总用地面积约12平方公里，工业集中区内可开发用地面积约7.88平方公里。将建设总建筑面积约585万平方米的通用厂房及外口公寓等配套设施。整个工业集中区由思明、湖里、同安和火炬四个园区组成。

2005年6月13日，成立了以厦门市副市长潘世建为总指挥，市建设与管理局局长黄诗福为常务副总指挥，市建设、国土、规划、市政园林和各区参与的同安工业集中区建设指挥部。

同安工业集中区建成投产后，将可创造数以百亿计的工业产值，将有近8万的产业工人接踵涌向这片热土。至此，同安工业集中区的蓝图初步绘就。

The secretary of Fujian provincial Party committee, Lu Zhangong, instructed that Xiamen would take a leading role in western straits economy development in the Xiamen leaders conference on May 21, 2005.

The same year in July, in the tenth session of the ninth Xiamen municipal conference, the municipal government called on the citizens to enhance "new round leaping forward development" and set industry development as the key in economic development. At the same time, the construction of the industrial concentration area had to be given attention because they are the vehicle and breakthrough of economic development.

After careful reasoning and planning, the site of Tong'an industry concentration area was selected in the south of 324 national road, west of Tongji road, east of Zong san road and north of New 324 national road, with 7.88 square kilometers of developable area in 12 square kilometers of total planning area. Workshop buildings for multi-purpose, apartments for immigrants and other service buildings with total area of 5.85 million square meters will be built up. All Tong'an industry concentration area consists of Siming Park, Huli Park, Tong'an Park and Torch Park.

On June 13, 2005, construction headquarter was formed which under the leadership of Pan ShiJian, the general administrator and Huang ShiFu, the vice administrator. Construction headquarter was formed by relevant Xiamen bureaus, such as Construction, Nation land, Planning and Municipal landscape and the different districts of Xiamen.

After Tong'an industry concentration area was put into use, ten billions of industrial output will be brought and over 20 thousand employees will work at this place.



◎ 指挥部每周召开工作例会，及时解决工程建设问题



◎ 市委、市政府领导定期听取指挥部汇报工作进展情况



◎ 工业集中区建设指挥部及各分指挥部驻场办公





◎ 省委副书记王三运视察工业园区建设





◎ 时任龙岩市委书记刘赐贵考察工业园区建设



◎ 市委常委、秘书长徐模在园区建设现场



◎ 市委副书记、纪委书记黄杰成指导工作



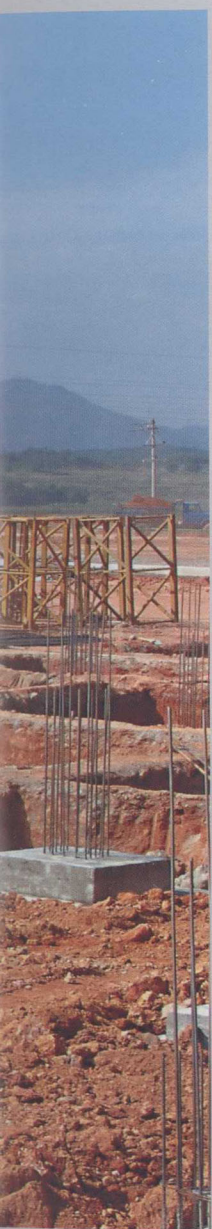
◎ 副市长、工程总指挥潘世建在园区建设现场



◎ 常务副总指挥黄诗福汇报工程进度

精心施工 规范管理
Management and Construction





宏伟蓝图能否尽早实现、工业集中区能否如期兴建并获得成功，取决于对这一宏大工程建设施工的组织管理。指挥部荟萃各路专家，按照“建筑高标准，设施高效能，施工高质量，安全高成效”的要求，锁定建设工期，坚定攻坚信心，科学紧缩建设时序。

金戈铁马，狂飙突进，建设者们创造了令人震撼的“新特区速度”奇迹，但奇迹不是神话，而是建设者们的艰辛付出，指挥部工作机构以饱鹰不厌猎的进攻姿态，秉持“超常不违规、创新不走样”的理念和“先谋后动，动辄必快，动辄必成”的作风，发扬建设者敢为人先、敢当重任、善闯难关、勇创奇迹的敢搏善建的特有精神，从容地抒写这篇主题鲜明的大文章。

2005年盛夏，热浪烤灼东南大地。7月30日，同安工业集中区在万众瞩目中点燃了开工礼花。

500多个昼夜，推土机、装载机、运输车、混凝土搅拌车，挟带着隆隆机声，扬起团团尘土，在这方热土上不间歇地滚动着。

滚动着的不仅是声音的交响，还有沸腾的青春热血和持之以恒的拼搏热情。

指挥员的气魄胆识，建设者的艰辛拼搏，推动建设鼓点越来越急骤，纪录屡屡被刷新。10天完成70万立方米的场平土方，35天建成首幢通用厂房，同安园区首栋三层厂房从正式开工到封顶仅用了35天，比预期的65天整整提前了30天。

Whether the blueprint can be turned into reality and whether the construction can be successful depend on the management of the grand project. The headquarters invited well-known experts to work together. With the demand of high-standard buildings, high-efficiency facilities and high quality and safe construction, the headquarters decided the completion time of the projects.

The constructors created a "new special-economic-zone speed" miracle. But miracles are not myths. They are the hard work of the constructors. The headquarters tried to speed up without violating the rules and create within the modes. They designed before action and the action was prompt and successful. They were innovative, responsible, brave and confident in this remarkable project.

In the midsummer of 2005, despite the scorching sun, the construction of Tong'an industry concentration area started.

During the 500 days, the bulldozers, loading trucks, long vehicles and cement mixers had been whirling. What was inspiring not only the symphony of the machines, but also the youth and passion, which sped up the construction.

The spirit went higher due to the courage and insight of the instructors and the hardwork of the constructors. New records were broken repeatedly. Ground earthwork of seven hundred thousand steres was leveled off in 10 days and the first usable plant was built in 35 days, advanced 30 days than 65 days of the schedule.



© 2005年7月30日工业集中区市政工程开工；2005年9月15日湖里园、思明园、同安园厂房相继开工



◎ 当地村民欢天喜地迎来工业园区的开工建设



© 金戈铁马 蓄势待发