

太 湖 气 魄 西 子 风 韵

美丽东钱湖

BEAUTIFUL DONGQIAN LAKE



宁波东钱湖旅游度假区管委会

地址：宁波东钱湖茗湖山庄内

电话：0086-574-88373017 88373018 88373019 88373020

传真：0086-574-88373012

邮编：315121

网址：www.dqlake.com

电子信箱：dqlake@cnnb.com.cn

The Administrative Commission of Dongqian Lake Tourist and Holiday Resort in Ningbo

Address: Minghu Villa, Dongqian Lake, Ningbo

Phone: 0086-574-88373017 88373018 88373019 88373020

Fax: 0086-574-88373012

Postal Code: 315121

Website: www.dqlake.com

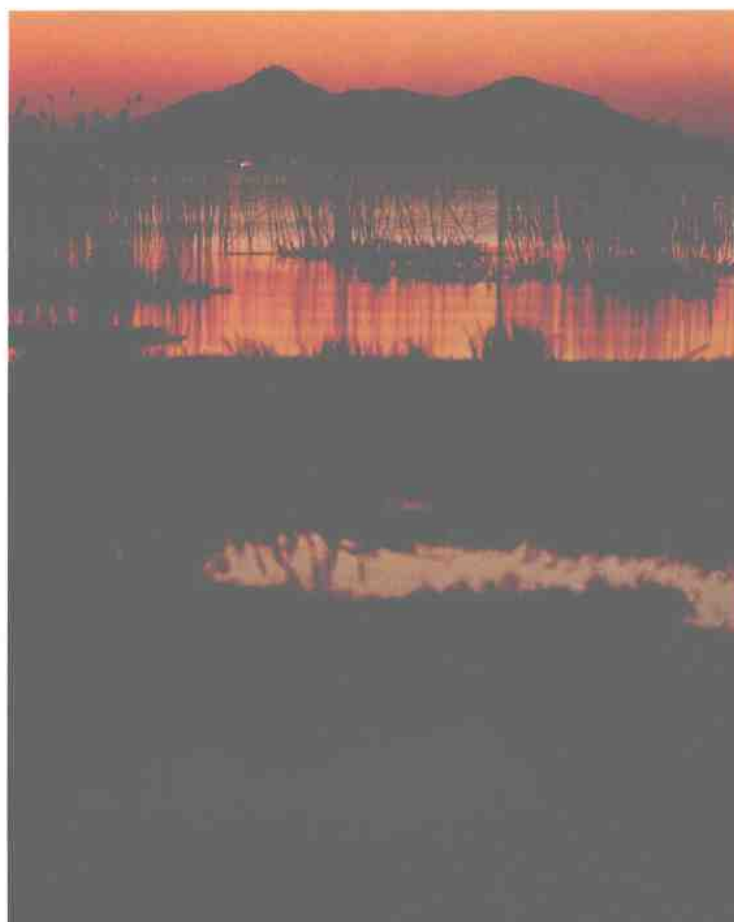
E-mail: dqlake@cnnb.com.cn



太 湖 气 魄 西 子 风 韵

美丽东钱湖

BEAUTIFUL DONGQIAN LAKE





顾问 **CONSULTANT**

俞 钢 吕齐鸣 YU GANG LU QIMING

主 编 **EDITOR IN CHIEF**

麻广灵 MA GUANGLING

编委会 **COMMITTEE**

杨 郁 戴国平 YANG YU DAI GUOPING

策 划 **PLANNER**

王仁定 WANG RENDING

设 计 **DESIGNER**

曹 挺 CAO TING

摄 影 **PHOTOGRAPHER**

王仁定 WANG RENDING

周越洋 ZHOU YUEYANG

英文翻译 **TRANSLATOR**

王明煜 WALTER WANG

设计制作 **PRODUCER**

上海大雅文化传播有限公司 SHANGHAI DE VOYAGE CULTURE
PROMOTION CO., LTD.

制版印刷 **PLATEMAKER AND PRINT**

上海龙樱彩色制版有限公司 SHANGHAI LONGYING COLOUR
PLATE CO., LTD.

上海界龙印刷装订厂 SHANGHAI JIELONG PRINTING &
BINDING FACTORY

目录 CONTENTS

前言 5
FOREWORD

认识东钱湖
COGNITION OF DONGQIAN LAKE

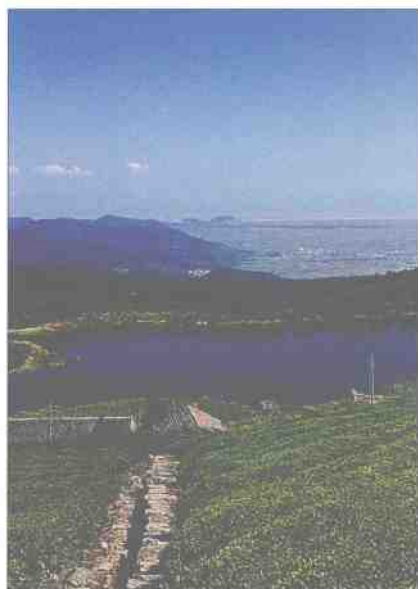
地理位置 9
GEOGRAPHICAL LOCATION

悠远历史 12
HISTORY

四季气候 14
CLIMATE

自然生态
ECOLOGY OF NATURE

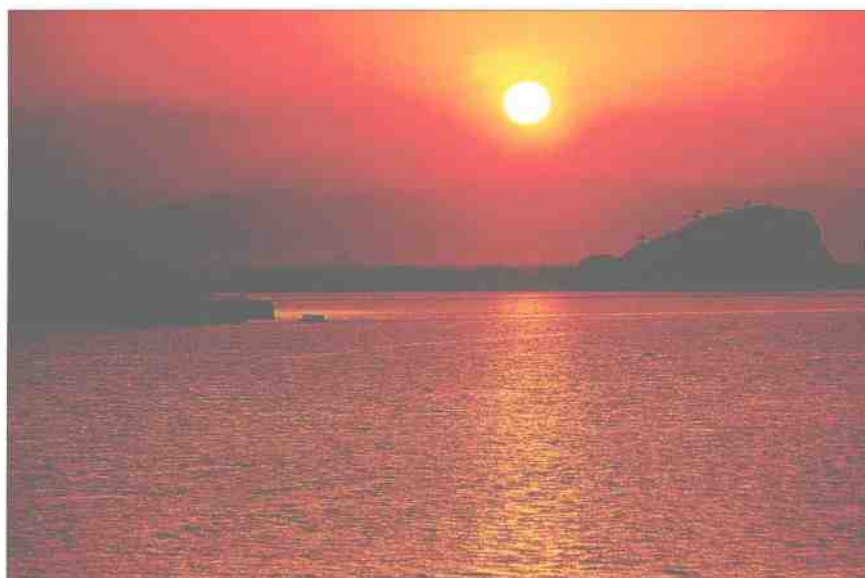
无限风光 SCENERY 18



福泉茶园 TEA GARDEN OF FUQUAN MOUNTAIN

山青水秀 20
WATERS AND HILLS

人文渊薮
GATHERING OF TALENTS



金色钱湖 GOLD RIPPLE OF DONGQIAN LAKE

历史名人 24
HISTORIC CELEBRITIES



启新高尔夫 DELSON GOLF COURSE

民居民风 26
FOLK RESIDENCES AND CUSTOM

佛教胜地 28
BUDDHISM SCENIC SPOTS

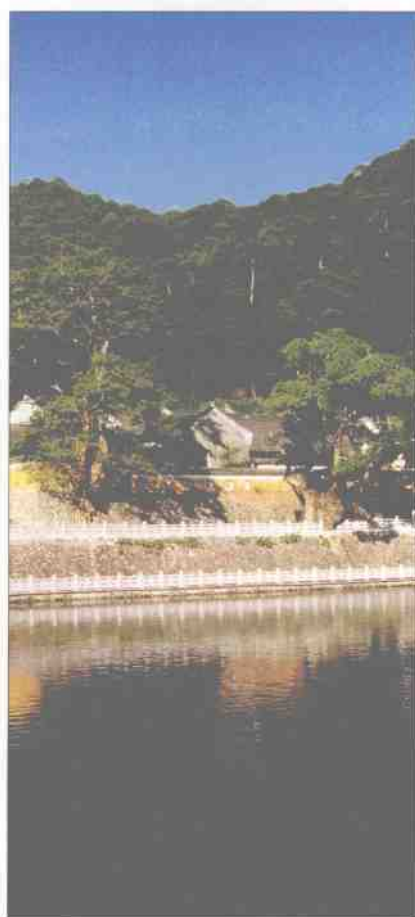
观光休闲
SIGHTSEEING AND RECREATION

运动娱乐 32
SPORTS AND ENTERTAINMENT

名胜古迹 34
HISTORIC AND CULTURAL SITES

美食佳肴 36
DELICIOUS CUISINE

远景规划
OUTLOOK AND LAYOUT



天童禅寺的放生池 FREE POOL OF Tiantong Temple



前言

东钱湖位于宁波市东南郊，是浙江省最大的天然淡水湖，湖面面积约为20平方公里，环湖45公里。自古以来就是浙东著名风景胜地。自然山水风光与人文名胜古迹相映生辉。区内有国家重点佛教名刹天童禅寺和阿育王寺、天童国家森林公园以及南宋石刻和韩岭庙后沟石牌坊等四处国家级文保单位。具有建设国家级旅游度假区的独特优势。

东钱湖景区内集中了湖泊山峦、森林公园、民俗风情、历史古迹、名人文化等旅游资源。北宋王安石曾在此任县令，南宋出过权倾朝野的史氏家族，人称“一门三宰相，四世两封王，七十二进士及第”。现当代童第周、沙孟海、沙耆等名人辈出。东钱湖优美的自然生态资源，适合人们修养健身。东钱湖良好的气候条件，适合四季旅游。便捷的交通和优越的区位使东钱湖的旅游客源稳定并且不断上升。近邻普陀山和溪口风景区，特别是杭州湾跨海大桥建成后，景区将纳入上海2小时交通圈，胜势突显。

东钱湖旅游度假区是一个集度假休闲、会议展览、旅游观光、水上娱乐为一体，蓝天、碧水、青山、绿树的生态型国家级旅游度假区、华东地区重要的国际会议中心和宁波现代化国际港口城市的“后花园”。欢迎海内外人士共谋投资开发大计，共图繁荣。

宁波东钱湖旅游度假区管理委员会

2002年3月

FOREWORD

Dongqian lake, lies in the southeast suburb of Ningbo, is the largest natural freshwater lake of Zhejiang province, which covering an area of 20 sq. kilometers with the girth of 45 kilometers. This area is the famous place of interest of east Zhejiang province from old, for

its beautiful natural scenery and historic and cultural sites. The scenic spots boasts two state-level buddhism temples: Tiantong Temple and Asoka Temple, Tiantong state woods park and two state historic relics: stone inscription of South Song Dynasty and stone memorial archway in Hanling. The area owns the unique advantage of developing into a state tourism resort.

Dongqian Lake integrates ample tourism resources such as lakes and hills, woods park, folk custom, historic sites and celebrities in the area. Wang Anshi once was appointed as county magistrate here in north Song Dynasty, during the south Song Dynasty Shi Family who dwelt here is rather powerful of the time. Tong Dizhou(a biologist), Sha Menghai(a calligrapher) and Sha Qi(a painter) were all born here. The area boasts beautiful ecological resources, mild climate, convenience communication and predominant location, which is suit for tourism in the whole year. Neighbouring to Putuo Mountain and Xikou scenic district, Dongqian Lake scenic area will be within the 2-hour communication circle of Shanghai after the bridge over Hangzhou Bay is constructed.

Dongqian Lake tourism resort plays the role as state ecological tourism resort, main international conference center of East China region and back garden of Ningbo with blue sky, clear water, green hills and trees, which integrates the function of relaxation, conference, exhibition, sightseeing and overwater entertainment. With the goal of mutual prosperity and development, We welcome people of home and abroad to make investments here.

The Administrative Commission of

Dongqian lake Tourist and Holiday Resort in Ningbo

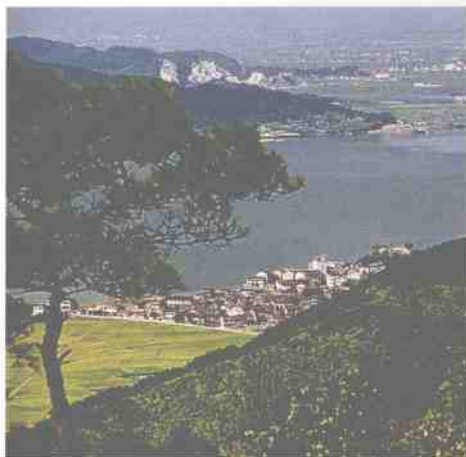
March, 2002





认识东钱湖

COGNITION OF DONGQIAN LAKE



地理位置 GEOGRAPHICAL LOCATION

8-11

悠久历史 HISTORY

12-13

四季气候 CLIMATE

14-15

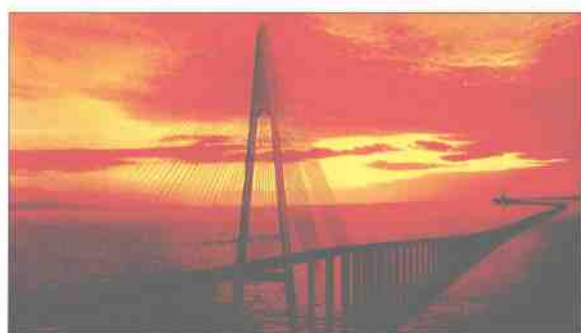




地理位置 GEOGRAPHICAL LOCATION

东钱湖位于中国对外开放城市——宁波市东南郊，毗邻上海、杭州。当杭州湾公路大桥建成，来往上海仅需两小时车程。从东钱湖至宁波市区和栎社机场分别为15分钟车程，进入沪杭甬高速公路和同三线高速公路只需5分钟。从大的位置看，东钱湖处于浙东旅游网络的中心节点，东与海天佛国普陀山隔海相望，南与宁海温泉相近，西与奉化溪口、梁祝文化公园相邻，北连建设中的杭州湾大桥。区内的国家级佛教名刹天童禅寺和阿育王寺、天童森林公园共同构成东钱湖旅游度假区。

Dongqian Lake lies the southeast suburb of Ningbo, a China open city, neighbouring Hangzhou and Shanghai. It will take 2-hour-ride from Shanghai to the lake after the bridge over Hangzhou Bay is constructed. It is separately 15-minute-ride to Lishe Airport and downtown, and 5-minute-ride to the entries of Shanghai-Hangzhou-Ningbo Expressway and Tongsan Expressway. Dongqian Lake scenic area is in the center of east Zhejiang province tourism network, facing Putuo mountain in the east, connecting the Ninghai hot spring and Yandang Mountain in the south, neighbouring Xikou scenic area, Butterfly cultural park and Hemudu in the west, and adjacent to Hangzhou in the north. Dongqian Lake tourism resort is composed of Tiantong Temple, Asoka Temple and Tiantong Woods Park.



建成后杭州湾公路大桥

The highway bridge over Hangzhou Bay



宁波市在华东六省一市的位置
Location of Ningbo in East China region



东钱湖是浙东著名的风景名胜区，其面积相当于4个杭州西湖，其以秀丽的自然风光和悠久的历史背景名闻遐迩。全湖由谷子湖、北湖、南湖3部分组成。四周青山环绕，秀峰竞姿；湖面烟波浩淼，碧波万顷，被郭沫若誉之为“太湖气魄、西子风韵。”

Dongqian Lake, four times of the area of West Lake of Hangzhou, is a distinguished scenic spot in east Zhejiang province, with pretty scenery and centuries-old historic culture background. The lake is composed of three parts: Guzi lake, north lake and south lake, with thick-wood hill surround and mist-covered water. Guo Moruo(a literator) gave Dongqian Lake the compliment as “with the spirit of Taihu Lake and charm of West Lake”



秋色
Charming Autumn



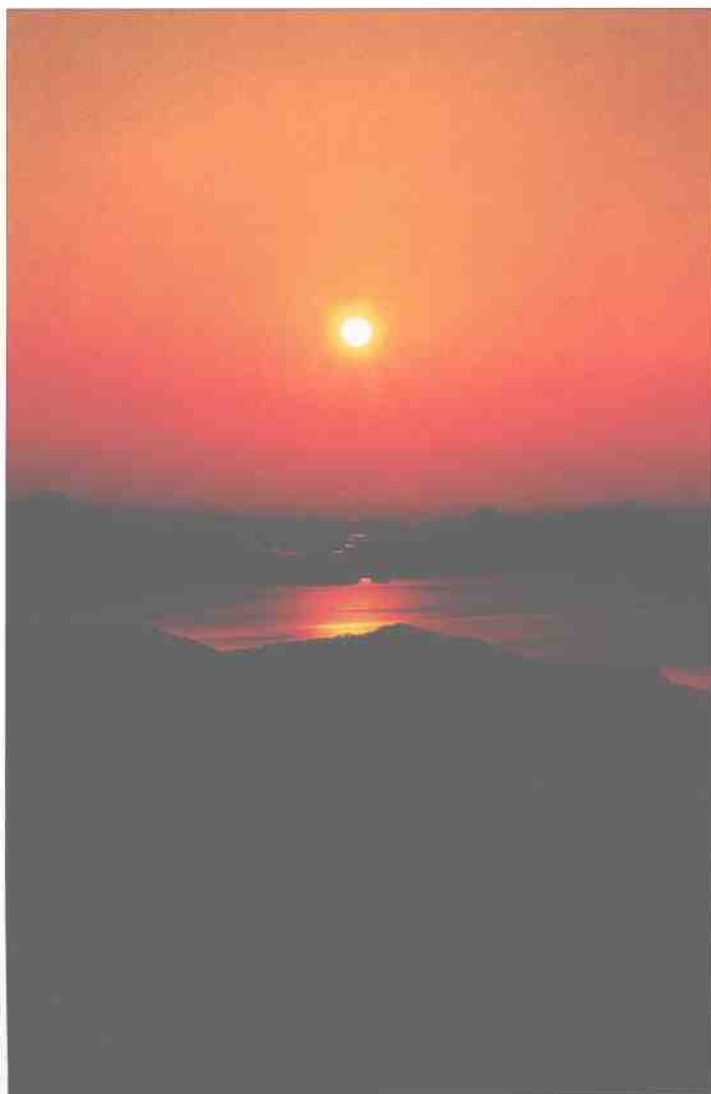
沙孟海书学院
Sha Menghai Calligraphy Academy



夜幕中的湖面
Lake under the curtain of night



霞屿公园
Xiayu Park



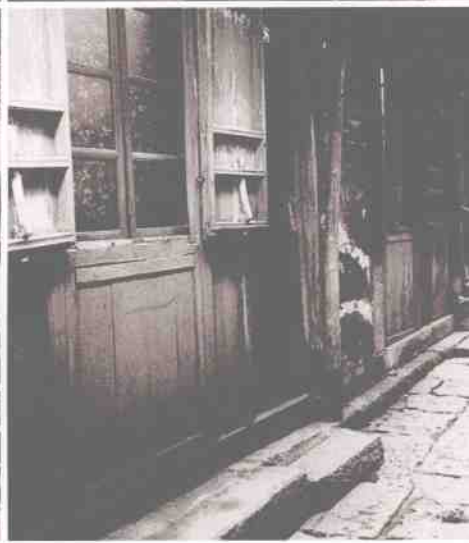
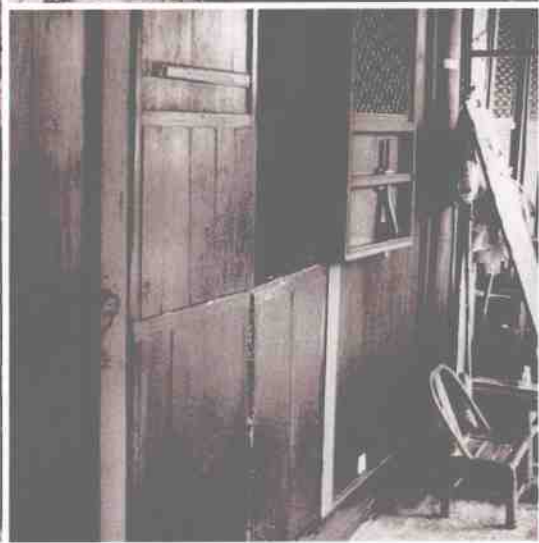
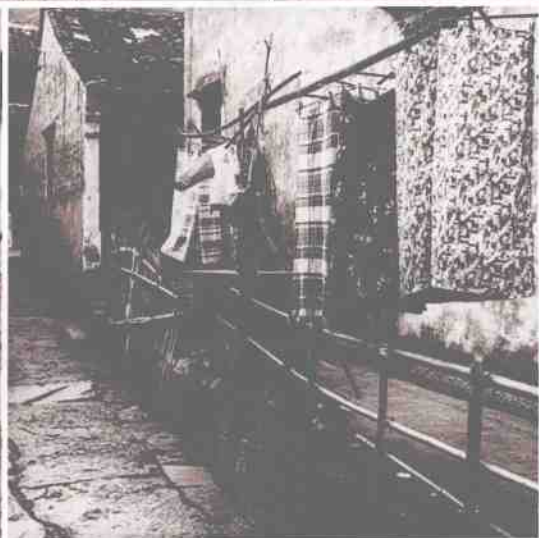
钱湖日落 SUNSET IN DONGQIAN LAKE



俯视谷子湖 GUZI LAKE IN A BIRD'S VIEW



天童禅寺 Tiantong Temple



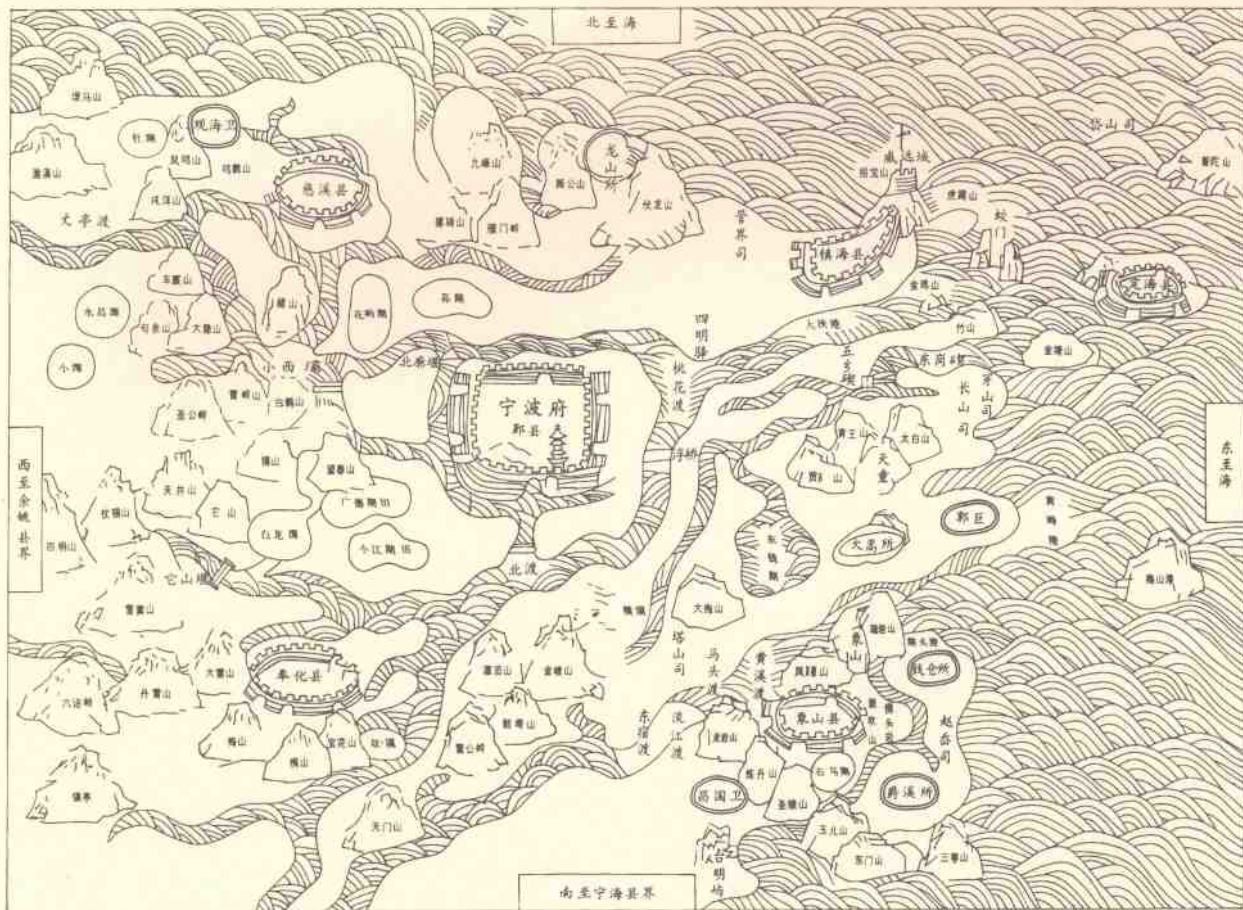
悠远历史 HISTORY

东钱湖历史悠久，远在2000多年前的春秋时期，人们就发现了这片湖山。宋代以来，官宦学士、名人高僧多在此营筑拓展，环湖曾一度楼台掩映、庙宇鼎鸣，曾留下东钱湖十大古景观和众多石刻、洞穴、石塔、名人墓葬等古迹。元代袁士元作诗云：“尽说西湖足胜游，谁信东湖更清幽。一百五十客舟过，七十二溪春水流。白鸟影边霞屿寺，翠微深处月波楼。天然景物谁能状，千古诗人咏不休”。



Dongqian Lake boasts a long history. Since Song Dynasty, many officials, men of letters, celebrities and dignitaries once dwelt here. Around the lake, there are many relics such as stone inscriptions, caves, stone pagodas. Yuan Shiyuan of Yuan Dynasty once composed a poem to sing high praise of Dongqian Lake.

清雍正《宁波府志》府境图



清·雍正《宁波府志》重绘



四季气候 CLIMATE

东钱湖为亚热带季风气候, 温和湿润, 冬夏长, 春秋短, 四季分明; 夏无酷热、冬无严寒, 热量较充足, 雨量丰沛, 冬夏季风交替显著。年平均气温16.2℃。良好的气候条件, 适合四季旅游、度假。

Dongqian Lake is located in subtropic zone with monsoon climate, which means mild, moist and four seasons are evident. Its average temperature of the year is 16.2 degree.



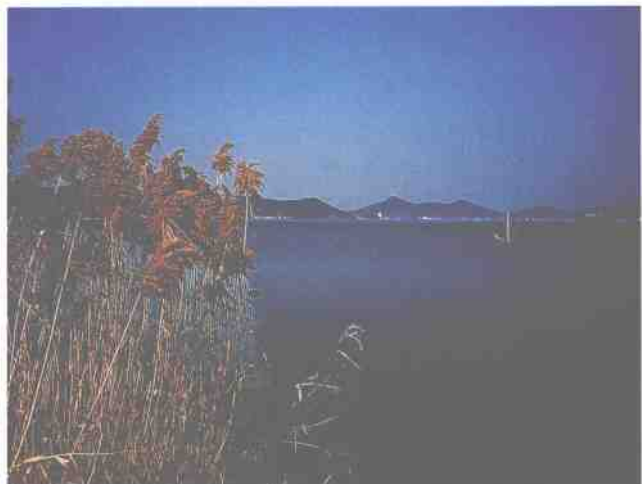
春季 风向多变, 温度起伏大, 冷暖悬殊。春末夏初, 常低温阴雨, 雨量显著增加。

SPRING Wind direction is changeable. Temperature varies greatly. The precipitation increases in late spring and early summer.



夏季 常出现高温高湿天气的“梅雨期”。七月中旬进入高温少雨的盛夏伏旱期。七月下旬起多台风活动。

SUMMER “Mould Rain Period” with high temperature and humidity is the characteristic of this season. The Typhoon is often seen from the last ten-day of July.



秋季 初秋仍受台风影响, 九月是全年雨量最多月份, 秋雨连连。此后, 温度逐渐下降, 期间有“十月小阳春”。

AUTUMN The precipitation reaches the top in September. From then on, the temperature begins to drop. Indian summer always appears in October.



冬季 盛行西北风, 天气以晴朗为主, 是全年降水最少季节, 低温适中, 偶有雨雪。

WINTER This season is characteristic by fine, cold and desiccant days with northwest wind and rain and snow.