

廉江

Lianjiang

廉江市人民政府
THE PEOPLE'S GOVERNMENT
OF LIANJIANG



● 中国百强 ● 中国红橙之乡 ● 全国卫生城市

廉江市位于广东省西南部，雷州半岛北部，与广西接壤，濒临北部湾，地域总面积2835平方公里。建县始于唐武德5年（公元622年），称石城县，唐天宝元年，改称廉江县，其后曾设罗州府，1915年复称廉江县。1993年撤县设市，下辖22个镇，总人口140多万，是湛江市辖人口最多、面积较大的县级市。

廉江山水秀丽，南亚热带季风气候，光照充足，雨量充沛，土地肥沃，四季如春，自然资源丰富。矿产资源有金、银、铝、锌、锡、锑和花岗岩、石灰岩、玄武石等20多种，其中银矿和花岗岩蕴藏量名列广东省前茅。全市宜林宜果宜牧丘陵山地153万亩，山塘水库2800多个，九洲江贯穿市境西南80多公里，全市可开发利用水域面积16万亩。全国闻名的鹤地水库，山青水秀，储水量达12亿立方米，水面积122平方公里，有人造海洋之誉。董必武、邓小平、陈毅、郭沫若等国家领导人曾莅临考察并予题词。

廉江地处粤、桂两省区交汇处，背靠大西南，面向东南亚，是沟通大西南和东南亚的门户。黎湛、广湛铁路在廉江境内交汇，有8个火车站和4条铁路专线；207、325国道贯穿境内；海岸线75公里，沿海有安铺、营仔、龙头沙三个天然渔港；距湛江港和民航机场48公里，海陆空交通便利。邮电通信事业蓬勃发展，被评为全国百强县（市）。1999年，开通了政府职能信息网和经济信息网络。

近年来，廉江市根据自然区位特点，把全市划分为沿海、中部、山区库区三个经济区域，采取了市级抓名牌，各镇抓特色，村户抓模式的战略措施，实行分类指导、层次推进。产业结构得到调整优化，基本形成了红橙、香蕉、龙眼、荔枝、速生林和罗非鱼、对虾、生猪、北京鸭、广海鸡等产业化基地，一品木业、安泰生物、佳鸿水产、陈虾果脯等一批集约型农产品加工企业初具规模，成为农业产业化的龙头。以卷烟、建材、食品、陶瓷为地方特色的工业在改革中持续发展，全市有200多种产品获得部、省、市优质产品称号，畅销国际市场。外贸出口创汇名列湛江各县（市）区的前列。

改革开放以来，廉江市广泛开展对外经贸活动，先后同国内28个省、市和40多所大专院校及科研单位进行了友好协作，与港澳台同胞以及50多个国家和地区建立了长期贸易关系。廉江将以更优惠的政策，优质的服务，优美的环境，欢迎海内外各界朋友前来观光考察，投资置业，共创新世纪辉煌。





- China's Top-100 City
- Hometown of Red Oranges in China
- National Sanitary City

Lianjiang is located at the southwest of Guangdong province and in the north of Leizhou Peninsula. Also it adjoins to Guangxi province and borders on Beibu Gulf. Lianjiang originally named Stone Town was first established as a county in the 5th year of Emperor Wude's reign in Tang Dynasty(622B.C.). In the first year of Emperor Tianbao's reign in Tang Dynasty the name of Stone Town was changed to Lianjiang county. Later Luozhou Government was once founded here. Then Lianjiang county was named again in 1915 and replaced for city in 1993. As a prefecture-level city under the jurisdiction of Zhanjiang city, Lianjiang possesses wide area and the largest population among Zhanjiang city. It administers 22 towns and covers an area of 2835 square kilometers with a population of over 1.4 million.

With pretty scenery and rich resources, Lianjiang belongs to south-Asian tropical and monsoon climate. It has fertile land and plenty of sunshine and rainfalls. Lianjiang is springlike in all seasons. More than 20 kinds of minerals have been discovered in Lianjiang, such as gold, silver, aluminum, zinc, tin, antimony, granite and limestone etc. The reserves of silver and granite rank top in Guangdong province. Lianjiang has 1530,000 mu hilly land area suitable for farming, fruiting and husbandry. Meanwhile it has over 2,800 reservoirs and ponds. Jiuzhou River flows though the city in the southwestern for over 80 kilometers. 160,000mu water area can be developed. Hedi Reservoir is famous for its picturesque scenery in China. With 122 square kilometers of water area and the ability to reserve 1.2billion m3 of water, Hedi Reservoir is famed as man-made ocean. Many national leaders such as Dengxiaoping, Dongbiwu, Chenyi and Guomoru have inspected Hedi Reservoir and made inscriptions for it.

Lianjiang is at the juncture of Guangdong and Guangxi provinces. It faces Southeast Asia with the back towards Southwest

China. So it has been an important door to contact with southwest of China and Southeast Asia. Litang-Zhanjiang railway intersects Guangzhou-Zhanjiang railway at Lianjiang. There are totally 8 railway stations and 4 special railway lines. No.207 and No.325 national ways run though the city. With 75kilometers of coastline, Lianjiang has 3 national fishing ports named Anpu, Longtuosha and Yinzei. It is about 48 kilometers away from Zhanjiang port and Zhanjiang Airport. Lianjiang possesses convenient transportation network of land, water and air. Entering in the list of the top-100 of China, telecommunication construction has achieved considerable improvements. In 1999 networks of government information and economic information were set up.

In recent years, Lianjiang has divided the whole city into 3 economic zones named coastal zone, central zone and mountain or reservoir zone in accordance with its characteristic of natural location, adopting the policy of "creating famous brands in city, creating features in town, and creating patterns in village or family". All policies will be guided separately and promoted gradually. Agriculture structure has been adjusting and optimizing. Agro-industry have been basically set up such as bases of orange, banana, longan, litchi, quick-growing forest, luofei fish, prawn, fresh pork, Beijing duck and Guanghai chicken. A number of intensive-typed agricultural products' processing enterprises have been highly developed and played the leading role. Yiping Wood co., Ltd, Antai Biological products Ltd., Gallant Aquatic Products Co., and Chenxia Foodstuff Co.,Ltd, to name a few. Industry with cigarette, building materials, Food, pottery and porcelain as local features is developed continuously. Over 200 kinds of products achieving high quality rewards of the ministry, province and city are sold well in international market. The foreign exchange earnings rank top in Zhanjiang city.

Thanks to the reform and opening to the outside world, Lianjiang has had cordial cooperations with over 28 provinces and 40 colleges or scientific research institutions. Meanwhile it has established long foreign trade relations with over 50 countries and regions including Taiwan, Hongkong and Macau. Lianjiang will work its best to provide high-quality services and favourable environment. Friends from all walks of live are welcome to visit and invest in Lianjiang. Let's joint our hands to build splendid new century.





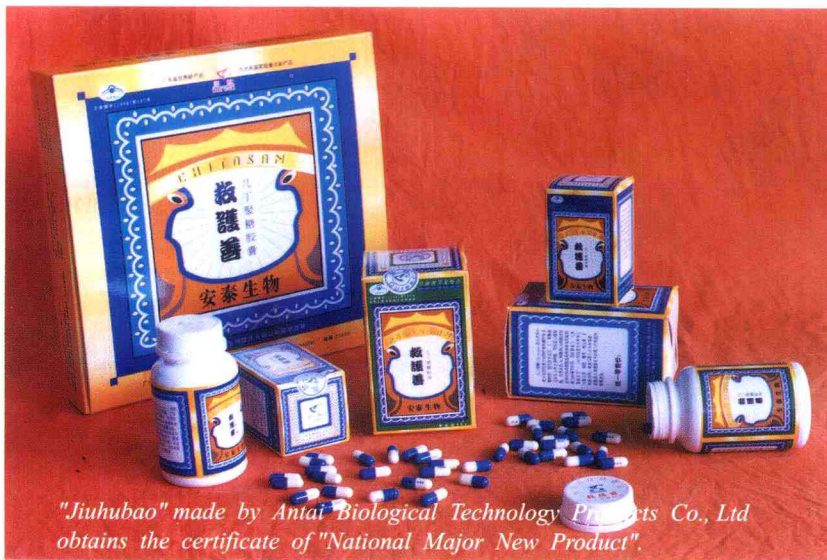
廉江市现有大

中型企业18家，形成了建材、卷烟、陶瓷、制糖、家电、食品等10多个支柱产业。本地资源型工业企业蓬勃发展，资源优势逐步转变为经济优势。

安泰生物技术制品有限公司生产的“救护善”，获得“99年国家级重点新产品”证书。



一品木业家具古香古色，具有西欧特色，深受外商青睐。
Antique furnitures made by Yiping Wood Co.,Ltd



"Jiuhubao" made by Antai Biological Technology Products Co., Ltd obtains the certificate of "National Major New Product".

Lianjiang city has 18 large and medium enterprises currently. More than 10 categories (such as construction material, cigarette, pottery & porcelain, sugar-made, electric household appliance and food) serve as the mainstay. Local resources-typed industrial enterprises is flourishing. Resources superiority transforms to economic superiority generally.



台湾佳鸿水产（廉江）公司，日加工水产品60吨，年出口总额达400万美元。

Taiwan Gallant Aquatic Products (Lianjiang) Co., Ltd with us \$4 million of annual gross export value can process 60 tons of aquatic products daily.



Golden preserved fruit, canned Litchi and canned pineapple of Chenxia brand are in great demand both at home and abroad.





廉江卷烟产品质优价廉。
Cigarettes made in Lianjiang
with high quality and low price.



家用电器质优款新。
Household electric appliances
with high quality and new style.

廉江有南国新兴瓷都之称，是国家对外经济贸易合作部日用细瓷出口基地之一。

Lianjiang, one of the daily-used porcelain export bases of the national Department for Foreign Economic trade and cooperation, is named as the new capital of porcelain in Southern China.



利用本地资源和现代技术开发生产的水泥、花岗岩板材、花岗岩工艺品，花色品种多，开发前景广阔。

The cement, granite boards and granite handicrafts of all kinds have a vast good prospect to exploit.





廉江平均气温 22°C ，适宜热带亚热带

作物生长。“八五”期间，农村综合实力、农林渔业总产值、猪牛羊肉、水果、水产品总产量及农业增加值等八项跨入全国百强行列。

龙眼
Longan



红杨桃 Red Carambola



荔枝 Litchi

With average temperature of 22°C Lianjiang's weather is suitable for tropical and Subtropical plants. 8 items (such as the most developed 100 cities and the extra value of agriculture etc.) Are in the list of top-100 cities in China during the period of the 8th five years' plan.

水稻 Rice





廉江红橙 Lianjiang Red Orange



万亩虾塘
Shrimp Ponds

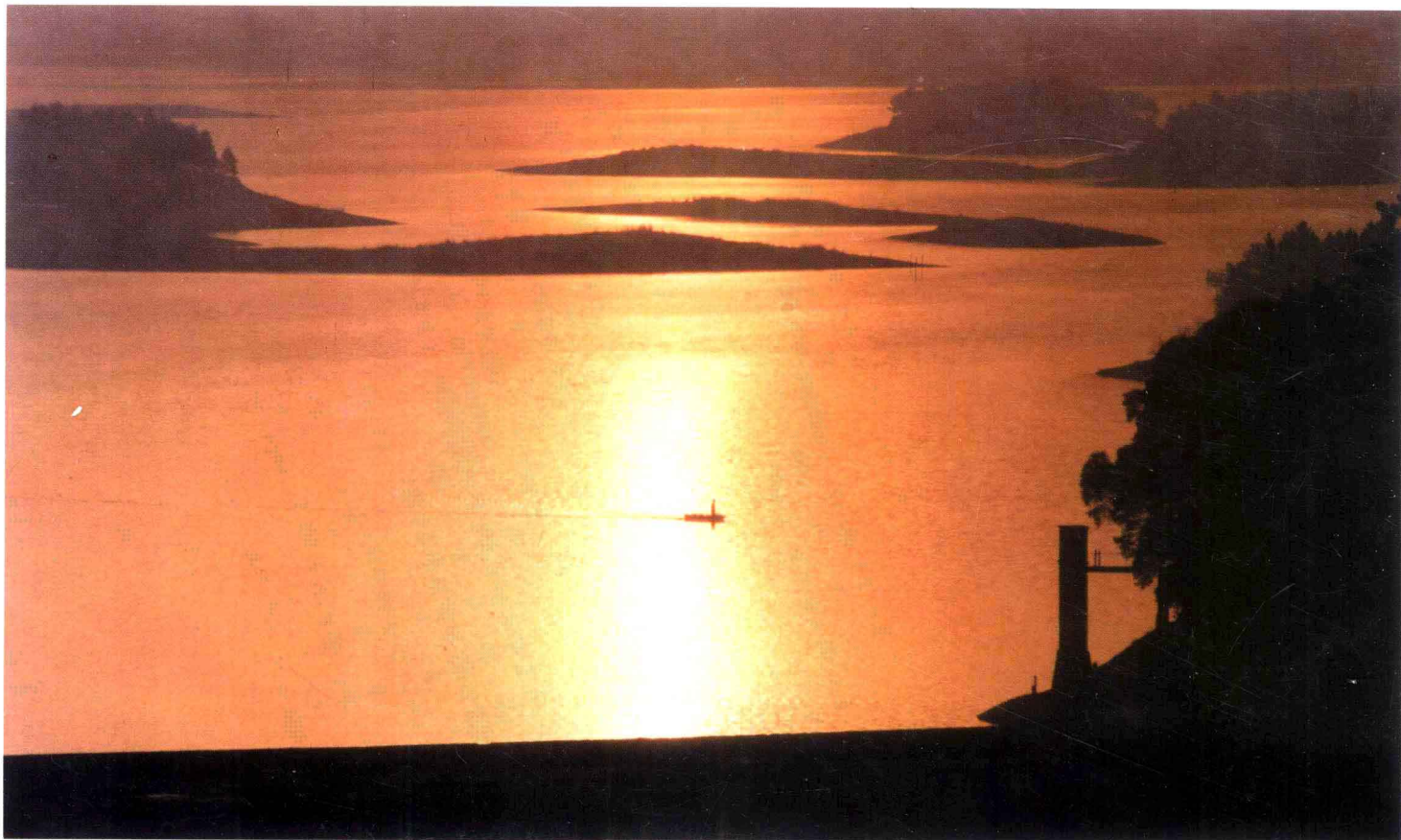


鹤地水库景色宜人
Hedi Reservoir with picturesque scenery

廉江山清水秀，环境优美。市区高起点规划、高标准建设、高效能管理，初具现代中等城市规模。

Beautiful Lianjiang, to plan it at a high starting Point, to build it at high standard, and to manage it at high efficiency, reaches the level of modern medium-sized city.

鹤地水库晨曦 First rays of the morning sun in Hedi Reservoir



市区新貌
New look of the downtown





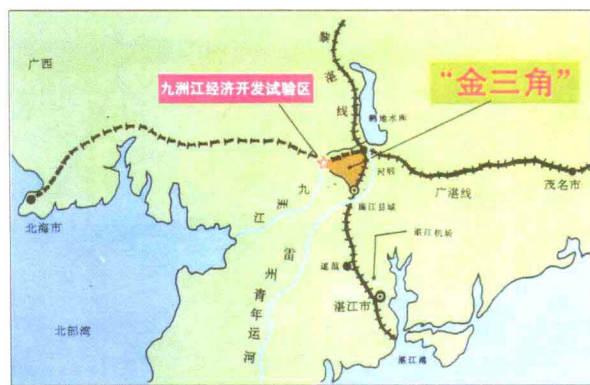
廉江市九洲江经济技术开发试验区，于1996年1月经广东省人民政府批准设立，总面积8.3平方公里，位于九洲江畔，是投资置业理想之地。

Lianjiang Jiuzhou River Economic Technology Development Zone is situated along Jiuzhou River, covering an area of 8.3 square kilometers. Approved by the people's government of Guangdong province, it was established in January 1996. It is a favourable place to invest.



开发区总体规划图

Program of the Economic Development Zone of Jiuzhou River

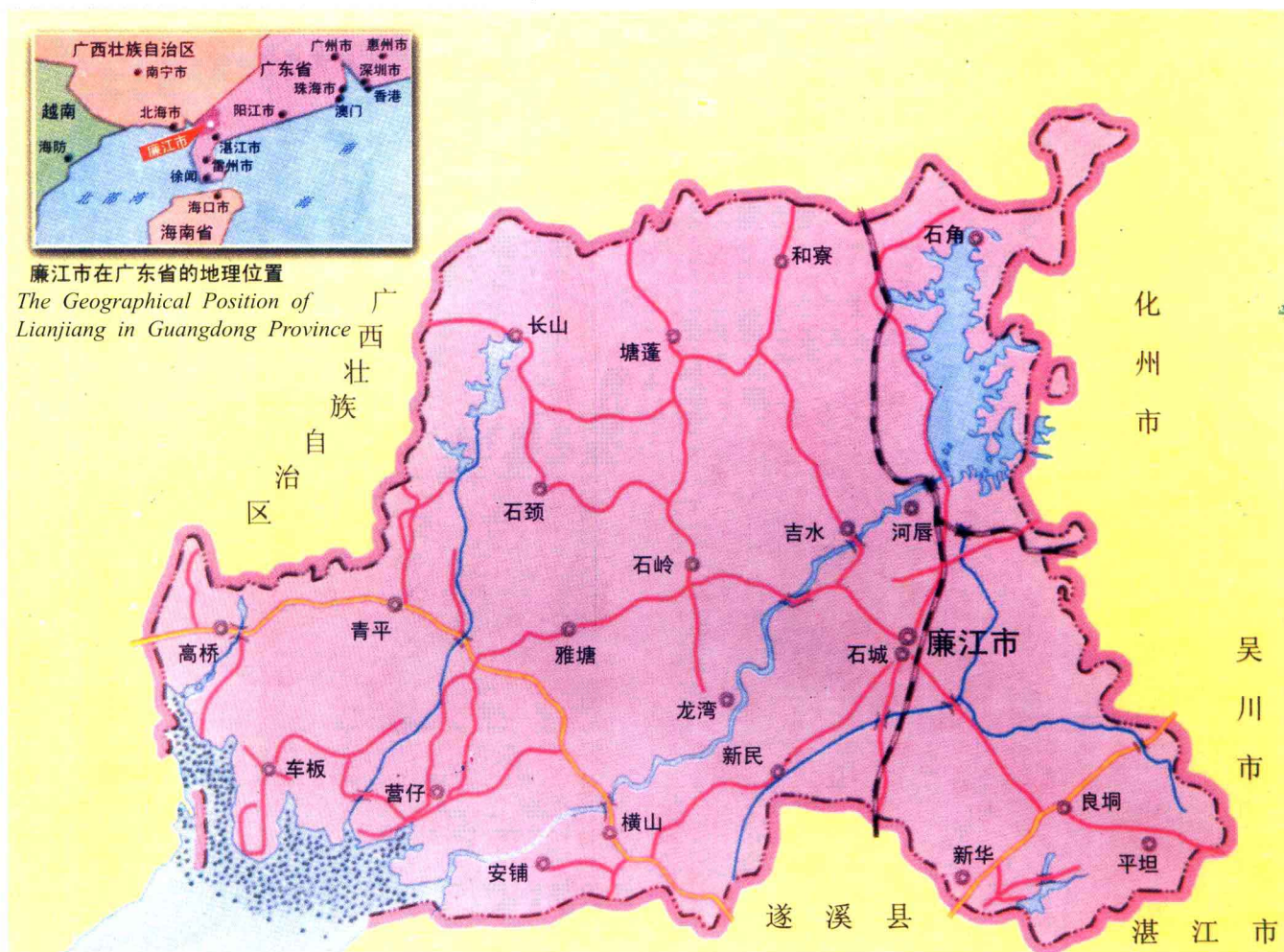


开发区一角 A corner of the Development Zone



发展中的民营科技工业区
Developing Civil Technical Industry District





廉江市在广东省的地理位置
The Geographical Position of
Lianjiang in Guangdong Province

廉江市行政区域图
Administrative Division of Lianjiang

廉江市对外经济贸易局

Bureau for Foreign Economic Relations and Trade of Lianjiang City

电话(Tel): (0759) 6685686 6687395

地址: 廉江市环市北路68号

Add: No. 68, Huanshi North Rd., Lianjiang City

廉江市经济发展中心

Lianjiang Economic Development Center

电话(Tel): (0759) 6601708

地址: 廉江市五一路1号

Add: No. 1, Wuyi Rd., Lianjiang City

廉江市经济技术协作办公室

Economic and Technical Co-operation Office of Lianjiang City

电话(Tel): (0759) 6622630

地址: 廉江市五一路1号

Add: No. 1, Wuyi Rd., Lianjiang City