

一九三六年六月

上海自然科學研究所要覽

上海自然科學研究所要覽

THE SHANGHAI SCIENCE INSTITUTE

Its History, Organization and Activities

I. HISTORY AND PURPOSE

In view of the fact that China and Japan have a common cultural heritage, the intellectuals of the two countries were fully alive to the urgent need for encouraging and fostering a systematic study of as well as propagation of Oriental culture ; and also for the enabling of such undertakings to contribute in turn, to the advancement of the world's culture and civilization.

Thus, in February 1924, the Japanese Government proposed joint plans to the Chinese Government in order to meet the above mentioned need, and to cooperate in its realization. After careful consideration of the Chinese Government, the authorities of the two Governments came to a complete agreement in the appointment of a Chinese and Japanese Commission thereby forming the Shanghai Committee of Oriental Cultural Work.

The committee held its first meeting in December 1926, when the establishment of the Shanghai Science Institute was passed upon by the Committee without debate. The object in creating the Institute was to

promote the progress of natural sciences in China by carrying on, first of all, purely scientific research of urgent questions especially vital to the interests in China. The Committee stressed the necessity of endeavouring to raise the scientific ability of Chinese scholars.

It was decided that the research work should be set in motion without waiting for the completion of the construction of the Institute. The period prior to the formal inauguration of the Institute was designated to be the Period for Preliminary Researches, during which time, some research studies were conducted by some specially appointed scholars, on certain phases included in the following topics :—

1. Study of Chinese Materia Medica ;
2. Survey of Terrestrial Gravitation and Magnetism in China ;
3. Biological Study of Fishes in the River of Yangtse-Kiang ;
4. Geological Study of the Regions in the South of the River of Yangtse-Kiang ;
5. Synthetic Study of Natural Inorganic Compounds ;
6. Study of Fermentation Fungi Products in China and Products of Fermentation ;
7. Study of Epidemics and Endemics in China.

It was also decided that in the Institute no du-

plicate study should be made on any subject which was already dealt with by, or is now under investigation in, any other existing institution in China.

In the meantime, an untoward event, the Tsinan Incident, occurred in the spring of 1928 between China and Japan, which induced the Chinese members to retire from the Shanghai Committee of Oriental Work which, however, instituted by mutual agreement between China and Japan, as previously referred to, was not destined to dissolution. In order to fulfil their duties of the Commission, the members who remain in office are carrying out the program already mapped out by the Sino-Japanese Committee meeting.

Turning to the building of the Institute, its construction work was begun in September 1928 and completed in the summer of 1931.

The regular office work, however, was formally commenced on the first of April in 1931.

2. BUILDINGS

The Institute is located at No. 320 Route Ghisi, in the southwestern section of the French Concession of Shanghai. The land covers an area of 20,715 tsubo (about 17 acres).

The main building of the Institute, planned by Prof. Dr. Shôzô Uchida, of the Imperial University of Tokyo, is of the modern type of Gothic architecture. It is a

three-storied building but five-storied in the central-fore, an imposing, dignified edifice as befits a sanctuary of science. It covers a building area of 2,591 nobe-tsubo (about 2 acres), and contains as many as 171 rooms, 115 of which are allotted to laboratories and research chambers, the rest being the General Office, Central Libraries, Lecture Hall, State Reception Room, Council Chamber, Reception Room, Committee Room, Dining Room, Anteroom, Storeroom, Storage-battery Room, Switch-board Room, Workrooms, etc.

In the compounds there are, besides the main building, a storehouse of chemicals, a shed of domestic animals used for medical tests, an outbuilding for breeding and fostering fishes and insects, one for the observation of terrestrial magnetism, another for the observation of meridian transit, and a greenhouse. Moreover, there are a Director's House, Staffs' Quarters, Bachelors' Quarters, Technicians' Quarter, Club-house, and other annexes attached to the Institute.

The total value of land and buildings is ¥2,500,000 and the cost of internal equipment of the main building is about ¥800,000.

3. ORGANIZATION

The Institute is divided into seven Departments: Physics, Chemistry, Biology, Geology, Pathology, Bacteriology, and Pharmaceutical Research.

The Department of Biology is sub-divided into the Zoological and the Botanical Sections ; the Department of Geology into the Stratigraphical and the Petrological Sections ; and the Department of Pathology into the Pathological and the Hygienical Sections.

The Director has full charge of all the affairs of the Institute.

Each Department consists of the Members, Assistant-Members, Assistants, and Research Probationers. The Research Probationers are chosen from among the Chinese on examination.

The General Office deals with all the affairs of general business, treasury, libraries, publications, purchases, and workrooms. The workrooms are Metal Workroom, Wood Workroom, Glass Workroom, Electric Engineer's Room, Rock-slice Preparation Room, Boiler Room and Book Bindery. For practical convenience, the Rock-slice Preparation Room is placed under the charge of the Department of Geology.

There are two main Central Libraries (Oriental and Occidental), and other branch Libraries under the management of each Department. In the Central Libraries are stored books, journals, maps, etc., which are referred to by more than two Departments. At present, owing to their incomplete state, the Central Libraries have only a collection of 54,000 volumes and 3,000 sheets of maps and charts.

4. FINANCES

All expenses of the Institute are defrayed by the revenue of the "Special Account for the Cultural Work for China" of the Japanese Government.

The running expenses of the Institute for the fiscal year 1935-1936 is about ¥ 440,000.

5. PERSONNEL

The personnel of the Institute is now (June, 1936)
133. The disposition is given in the following table:

	Director	Members	Ass't. Members	Gen. Sec'y.	Ass't. Gen. Sec'y.	Ass'ts.	Sec'ys.	Ass't. Sec'ys.	Others	Non-Reg. Members	Total
Director	1										1
General office					1		6	10*	36*		53
Dept. of Physics		4	1			1			4		10
Dept. of Chemistry		3				1			3		7
Dept. of Biology		3	2						7		12
Dept. of Geology		3	2						4		9
Dept. of Pathology		3	1			1			10		15
Dept. of Bacteriology		2	1			3			6		12
Dept. of Pharmaceutical Research		3				2			5		10
Non-Reg. Members										4	4
Total	1	21	7		1	8	6	10	75	4	133

* Including 12 Technicians.

1 Research Probationer is at present admitted in the Department of Bacteriology and 1 in the Department of Pharmaceutical Research.

6. SCIENTIFIC PUBLICATIONS

The results of studies made by the Institute are published in the Bulletin of the Shanghai Science Institute (上海自然科學研究所彙報) when written in either Chinese or Japanese, and in the Journal of the Shanghai Science Institute when written in European languages, such as English, German, French, etc.

The résumé of each article is always given in the other than the one in which a full paper is published.

The Bulletin contains articles on every branch of the sciences dealt with by the Institute, while the Journal is issued under the following five sections :—

Section I: Mathematics, Astronomy, Physics, Geophysics, Chemistry, and allied Sciences ;

Section II: Geology, Palaeontology, Mineralogy, and Petrology ;

Section III: Systematic and Morphological Biology (Systematics, Ecology, Anatomy, Histology, Embryology), and Pharmacognosy ;

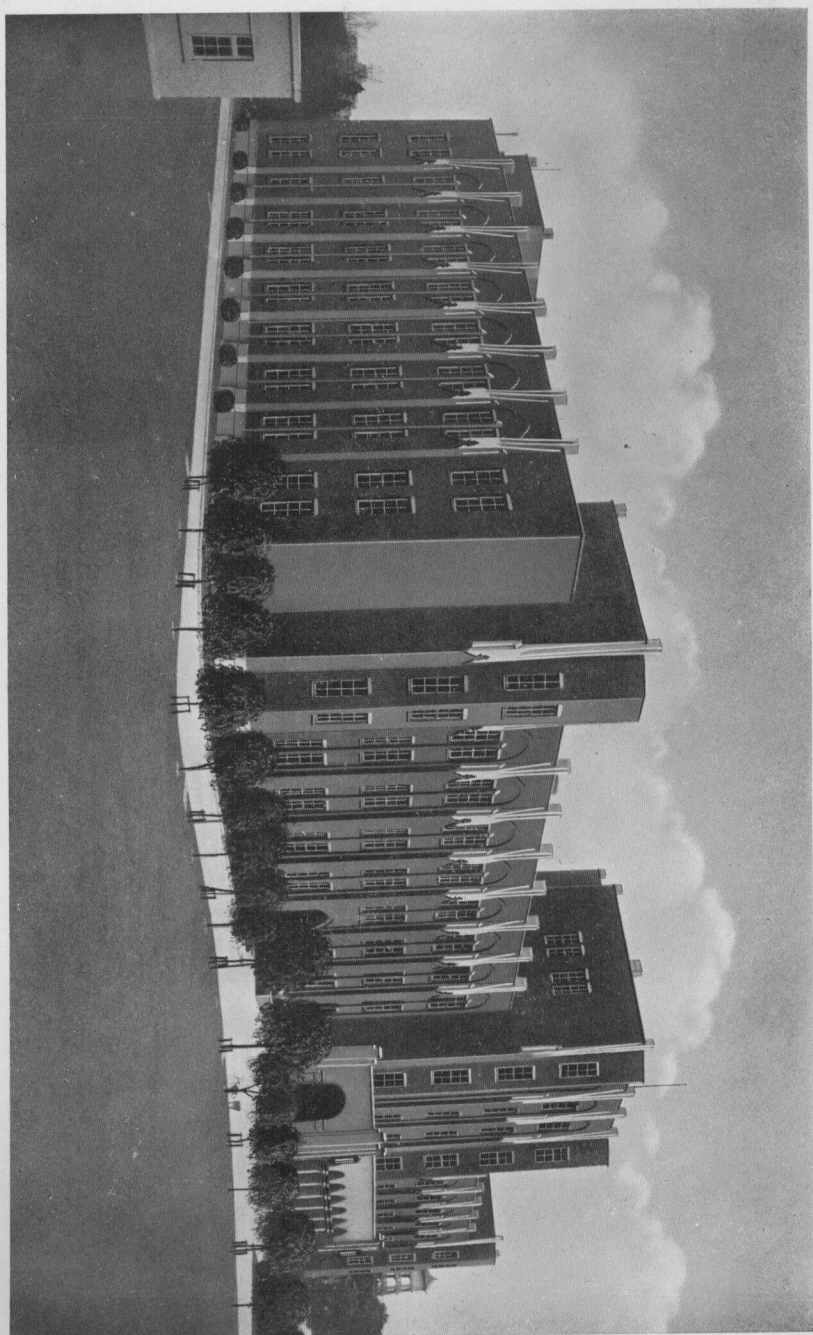
Section IV: Experimental Biology and Medicine (Physiology, Biochemistry, Pathology, Bacteriology, and Hygiene) ;

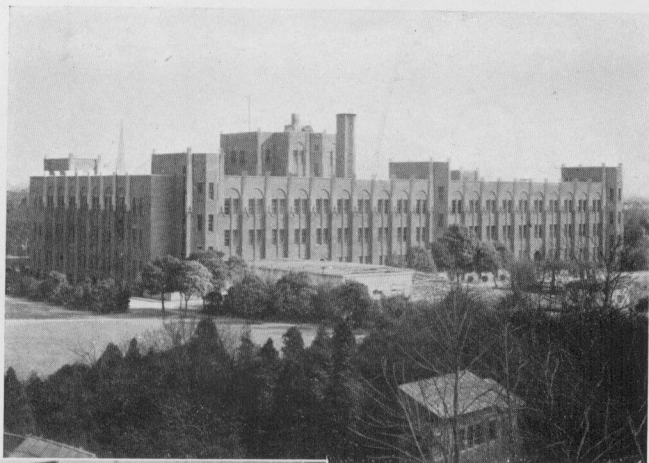
Section V: Contains articles on subjects not included in any of the above-mentioned sections.

Each article in both the Bulletin and the Journal is printed as a "separate" first and issued irregularly. The number printed is as many as 700 the former and 1,000 the latter. These "separates" are distributed free to certain academic and educational institutions, libraries, museums, and to those doing research work. Owing to the limited editions, it is not possible to have in the Institute at all times a supply in stock of every publication issued. When the "separates" amount to a proper number of pages, they are bound up as one volume, with an added contents.

7. PAPERS PUBLISHED

The Bulletin and Journal already published are as listed in the other pages (pp. 38-50).





本館背面



貴賓室



會議室



講 堂



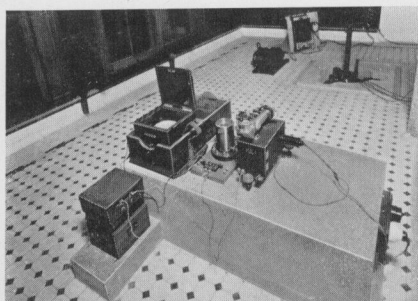
中 央 圖 書 室



上、歐 文 書 庫

下、東 洋 文 書 庫

中 國 研 究 室

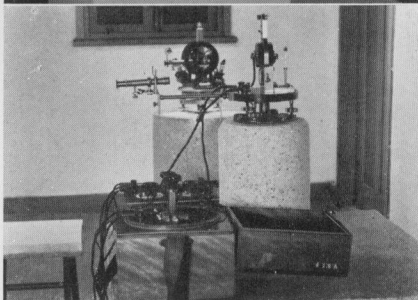
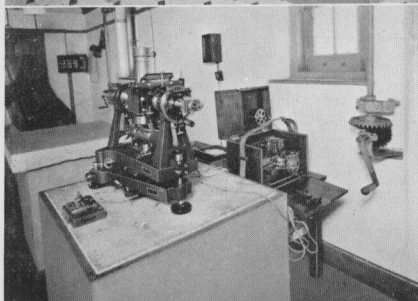


← 物 理 學 科

上、重力室内部

中、子午儀室内部

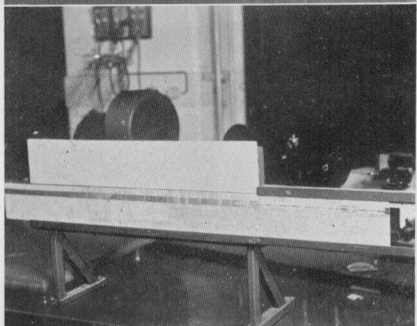
下、磁氣儀室内部



化 學 科 →

上、フィールドヨリ到着セル採集品

下、スペクトル線ニヨル化學元素
搜索ノ「計算尺」



生
物
學
科

魚類學研究室 →

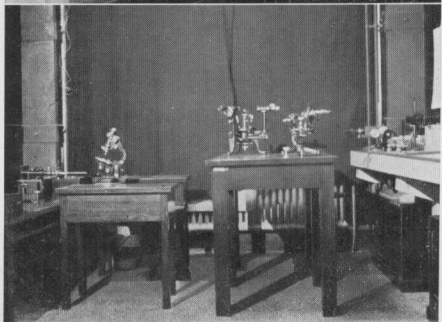


昆蟲學研究室 →



← 標 本 室

地
質
學
科



← 光 學 實 驗 室



病理學の實驗中

病 理 學 科



寄生蟲研究中



實 驗 室

細 菌 學 科

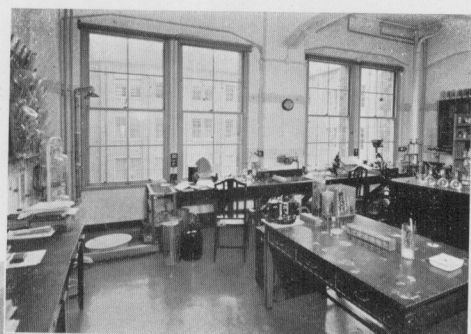


動 物 解 剖



動物舍ノ一部

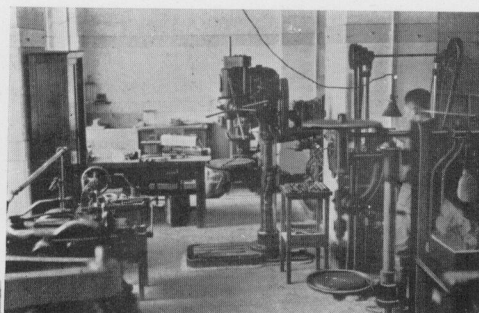
生 藥 學 科



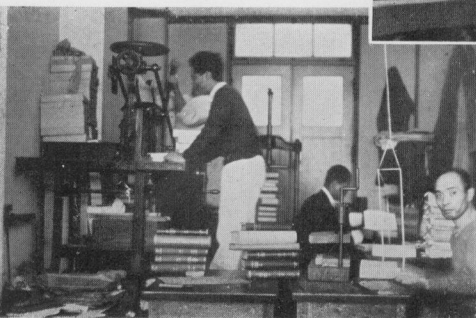
生 藥 學 實 驗 室



漢 藥 標 本 室



金 工 場



製 本 室