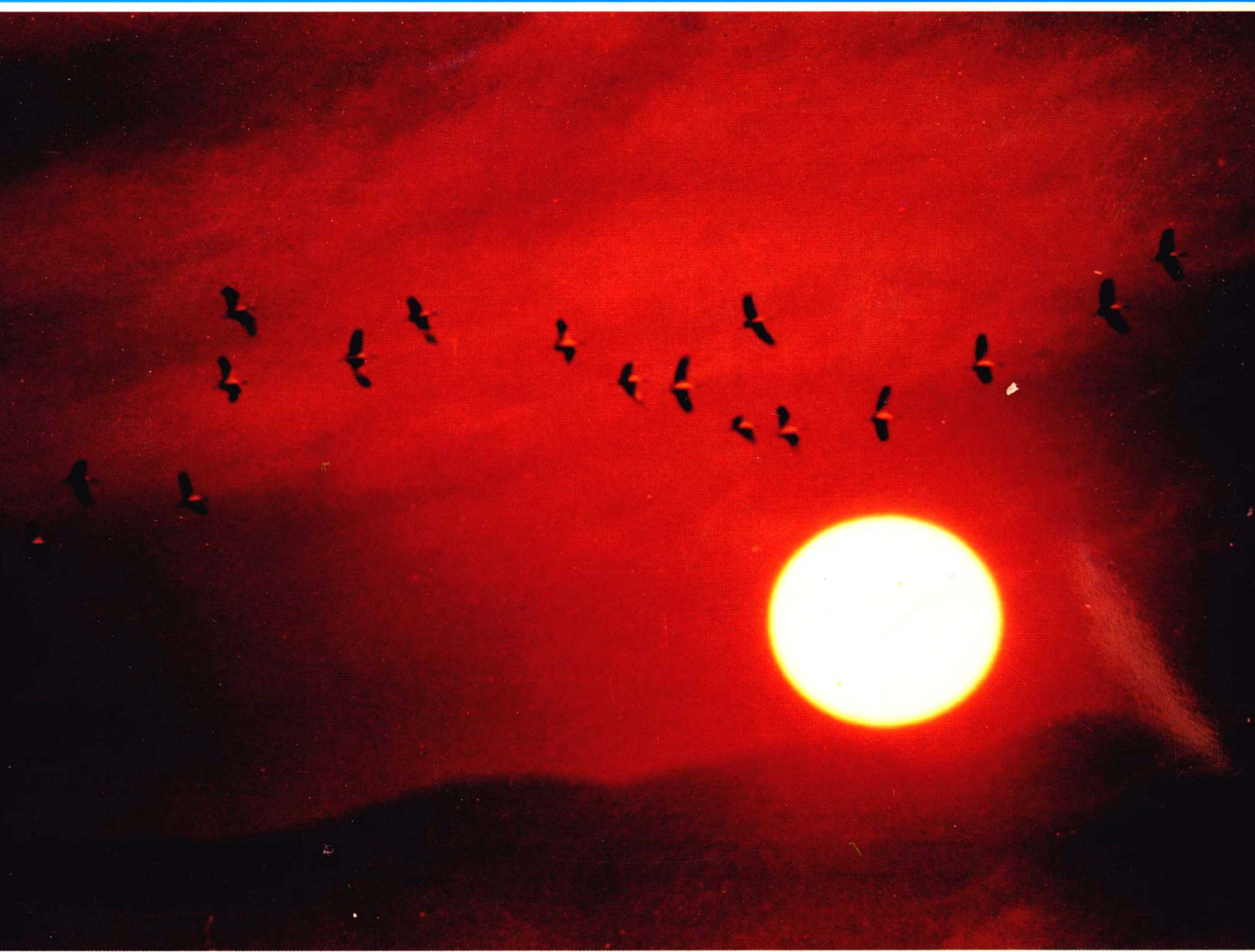


# 物通風物



THE SCENERY  
OF ZHAO TONG





紅軍長征扎西會議紀念館

顧問：梁公卿 楊傳江

責任編輯：李春仁 鄧正高 柴鈺連

王椿笙 武洛纓 王祖鞭

編輯：周 勁 馬才順 謝崇琨

李文貴 趙遠清 孫國萍

李文富 張仲全 伍志昌

李德征

撰稿：王椿笙 柴鈺連 梁恩洪

攝影：宋大明 楊華岳 呂大明

謝崇琨 秦 明 曾憲華

祝 明 馬順榮 李遠昌

孫德輝 周 勁 龐金祥

彭國祥 楊廷榮 柴勁松

吳宗福 趙建新 宋國華

李興燕 黃柏林 李榮貴

張恒榮 金盛鵬 黨樹平

劉順才 張 捷等

翻譯：楊新民

題頭字：江 濤 王紹堯

編 務：周志先 趙慶德 江 飛

饒清華 馮一民 黃 靜

朱長金 凌 敏 蘇家龍

柴峻峰

編制單位：《昭通經濟》編輯部

雲南經濟報社

# 榮繁通昭

梁子明



老的活化石桫欏樹成千上萬畝群落成片生長，還有一萬三千多公頃珍貴稀有筇竹和成片的天然原始楠竹林。

昭通各類自然資源組合配套良好，開發條件優越。豐富的水能資源與煤炭資源同在，有利於開發能源，水火電互補；豐富的能源和鉛、鋅、銀等并存，有利於發展有色金屬工業；豐富的磷、硫、煤配套，有利於建設大型化工基地；豐富的農業資源與能源、礦產資源結合，有利於工農業協調發展；旅游資源的開發將成為昭通的新興產業。

豐富的資源，勤勞的人民，賦予昭通經濟發展以無盡的潛力。在改革開放的大潮中，全區各族人民開拓進取，拼搏奮進，以資源為依托，農業為基礎，依靠“兩煙”積累資金，加強交通、通訊、能源等建設，發展教育科技文化事業，社會經濟穩定發展。近十多年，國民經濟主要指標均以高于全省的平均速度遞增，1990年比1980年，國民生產總值、國民收入翻了兩番多，財政收入大幅度增長，68種地方名特產品榮獲地優、省優、部優。1991年社會經濟又有長足發展，主要經濟指標創歷史最高水平。

縱觀過去，昭通發展迅速，成就顯著；橫向比較，差距很大，仍屬待開發地區。然而，我們對未來充滿信心，昭通的前途光明，前景燦爛。“八五”和今後十年，我們將堅持以農業為基礎，科技為先導，加強交通、能源建設，繼續壯大“兩煙”支柱產業；發揮畜牧、經濟林菓優勢，開發食品、竹類、蠶絲、毛皮輕紡加工業；煤電礦結合的載能工業；鉛鋅銀有色金屬工業和磷硫化工工業，形成多種優勢產業和與之配套的輔助產業，實現開發脫貧致富。目前經國家批准的包括我區在內的《金沙江下游地區國土規劃》和“攀西——六盤水”開發區能源、化工、原材料基地建設規劃正在逐步實施。我區的程控電話一步跨入國際先進水平，可直撥國內、國際電話；綏江、水富碼頭已竣工營運；起降波音737飛機的昭通機場1993年初將可通航；一批交通、能源、農業等重點工程相繼動工和正抓緊前期工作。這些建設，必將進一步改善投資環境，加快昭通的全面開發。

昭通的崛起、振興，除我們自身艱苦創業，盡力奮進外，還需采八方之優，補我之劣；集眾家之長，攻我之短。我們將進一步深化改革，擴大對外開放，真誠與國內外的各界人士友好合作。烏蒙起舞，金沙奏樂，喜客好友的昭通人民，熱忱歡迎八方賓客來開發富饒的寶地，促進昭通振興繁榮。

# WELCOME GUESTS AND FRIENDS FROM ALL THE PARTS OF THE WORLD

Zhaotong, which just likes a dazzling bright pearl, inlays the centre of southwest China, northeast corner in Yunnan, and guards strategic passage among Sichuan, Yunnan and Guizhou. On 23 thousands square kilometre beautiful and richly — endowed land, brings up 30 nationalities, 370 thousands valiant, industrious, simple and kindhearted the Han, Miao, Yi, Hui nationality and so on.

Within the boundaries of this prefecture, it is the queer sights of the tremendous momentum of Wumeng mountain, the winding course of Jinsa river, the terrain rising and falling, a great disparity in the height of mountains, "the peach trees be in full bloom at the foot of the mountains and the mountains slope be covered with snow".

Our ancestors lived and multiplied on the ancient and mystical land from the latter part of the Old Stone Age. In the long history evolution, Zhaotong people created splendid culture with their intelligence and wisdom. For example, "five Chi path", "south Yi (a name for ancient tribes in the south) path", rare treasure object "Zhuti silver", "Zhuti copper wash — basin", "Mengxiao tablet" of the Han Dynasty, "Huoshi frescoes of the East Jin Dynasty" and "Mingmo steep cliff" which be autographed by Yuanzi in the Tang Dynasty epitomized the quintessence of Jinchu (the Warring States, 475 — 221B.C), Bashu (the Three Kingdoms, 221 — 263B.C), Yelang (a Kingdom of Southeast the Han Dynasty, 206B.C — A.D. 220), Dianchi lake and Erhai lake have been exotic flowers of a long history and civilization of the Chinese nation.

Zhaotong enjoys a good name of "the treasure bowl" and "golden triangle" of natural resources, here, the mountains are rich in mineral deposits and the rivers store up natural wealths, the rare treasures are gathered together and all kinds of treasured objects assemble.

The rich hydroelectric resources occupy first place in Yunnan, their reserves are 20.8 million kilowatt and may exploit to amount installed capacity of 14.84 million kilowatt. The hydroelectric resources are noted for their centralizing runoff, plentiful water capacity, big discharge, small loss of down, low unit — price of power station installing generator, good economic specific property of kinetic energy and advantageous conditions to open up.

Mineral resources abound in gifts of nature. At present, have known 33 kinds of minerals and provened 22 kinds of mineral reserves. Here, have found and known the biggest brown coal mine which has been provened 80 hundreds million ton of reserves and more. The reserves of anthracites and sulphur — iron ores occupy first place in Yunnan. The superior mineral kinds are mercury, lead, zinc, silver, magnesium, quartz and gypsum. Recently, a big rich pure silver ore — bed has been found again in Lumachang of Ludian county where was a place to produce "Zhuti silver" in the past, which the highest grade is 1294 gram per ton. High — quality blackish green marble has only distinguishing feature of its pitch — black colour and bright like mirror.

Agricultural resources are celebrated for their riches, specialities and superiorities. Zhaotong had been collecting and distributing centre of goods and materials since ancient time, it was said that "its products colour were inex —haustible and local authorities never rested content with their greedy needs" in the old times. Here, traditional export products are kidney and buckwheat, potatoes are produced one million ton every year : Zhaotong is one of the main bases of "Yunnan tobacco", the output of flue — cured tobacco, which quality is very good and is found favour in consumer's eyes, has occupied the second place in Yunnan and the fifth place in China : the rate of saccharose in sugarcane per ton occupies front row in China : tea has only distinguishing feature of its sweet smell and colour : have produced natural silk for a long history : Zhaotong is famous for its more rich fruits, it has long been known as the hometown of fruits and is a commodity base to produce high quality apples and cherries : yellow pears have been well — known throughout all parts of the country. The quality of red oranges and sweet oranges are first — rate : the output of wild yangtgo is 80 percent of Yunnan's : raw lacquer, the fruit of Chinese magnoliavine, Chinese tallow tree, Chinese prickly ash and white wax insect are headed the list of famous products : local and special products — zhushu mushroom, bamboo shoots, Lengxangjun mushroom, Jinjiangmoyu taro, purple garlic, chilli, white melon seeds and

# IMPROVE THE PROSPERITY OF ZHAOTONG

## ZHAOTONG PREFECTURE ADMINISTRATIVE OFFICE

### COMMISSIONER LIANG GONGQING

walnut kernel and so on have been great reputation for a long time and have a ready market continuously. Here, it is natural crude drugs garden and is said that "you can tread on three medicinal herbs when you get yourself moving", tens kinds of rare medicinal herbs—the tuber of elevated gastrodia, the bark of eucommia, the root of membranous milk vetch, the tuber of pinellia and so on have been sold home and abroad. Zhaotong is a base of improving half-fine-wool sheep in China and is a important place of production of the livestock husbandry in Yunnan, too. "Towns look at hamlets each other, oxen and horses spread all over open country", the slope was covered with flocks of sheep, the abovementioned are a real portraiture of flourishing livestock husbandry in Zhaotong. There are more than 58 kinds of protective plants of the state level in Zhaotong, thousands mu tracts of Gongtung trees and Saluo trees which are age—oldest living fossil and 1.3 thousand hectare of valuable and unusual Qiongzhu bamboo and tracts of natural original Nanzhu bamboo are growing well.

Zhaotong has all kinds of natural resources that are advantageous to the development of its superiority. The co-existence of water and coal resources helps improve the energy; the co-existence of energy resources and lead, zinc as well as silver contributes to the development of non-ferrous metal industry; the integration of phosphorus, sulphur and coal is advantageous to the establishment of large-scale chemical base; the combination of agriculture, energy and mineral resources is again advantageous to the coordinating development of its industry and agriculture. The explore of travel resources will be a new industry in Zhaotong.

Based on its natural resources and agriculture as well as the accumulated fund out of tobacco and cigarette all ethnic groups in Zhaotong are strengthening the construction of its communications, telecommunication and energy resources, developing its education, culture and science and technology during the course of the reform. In the past decades, the main indexes of national economy have increased by degrees over the average speed of the whole province; compared with 1980, the gross national product and national income doubled and the revenue increased on a large scale in 1990. 68 local famous specialties were awarded as the best quality ones by Yunnan province and the Ministry of their lines. The main economical indexes were all-time high in 1991.

Looking at the past, Zhaotong developed rapidly with its remarkable achievements; looking ahead, Zhaotong is still such a place that is waiting for explore and development. During the period of the 8th five-year-plan and the coming ten years, based on agriculture, science and technology, we will furthermore consolidate the building of communications and energy resources; go on with the main production of tobacco and cigarette; give a full play to the superiorities of animal husbandry as well as economic forest and fruit; and develop the light and textile industry with focus on foodstuffs, bamboo articles, silk and fur, heavy industry on its coal, electricity and ore, non-ferrous metal industry on its lead-zinc-silver as well as the chemical industry on its phosphorus and sulphur, forming the industry of various superiorities with its integratedly assisting industry in order to get rid of the poverty-stricken.

Presently, "The Land Plan of the Lower Reaches of Jinshajiang River" including our Zhaotong prefecture approved by the state and the project of the basement construction of energy resources, chemicals and raw materials in "Panxi-Liu Pan-shui" exploring areas are putting into effect step by step. With the programme control telephone system, you can make both a direct domestic and international calls in Zhaotong prefecture. The docks in Sui Jiang and Shui Fu have been navigable; the Zhaotong airport will have been open to the public in April, 1994, at which Boeing 737 can land and take off. A patch of key projects of communication, energy resources and agriculture are starting building one after another or making preparation work. These constructions will improve investment conditions and speed up the overall development in Zhaotong prefecture.

The rising and development of Zhaotong not only lie in itself arduous effort, but also in the support and help from the outside. We warmly welcome those who would like to invest or cooperate with Zhaotong prefecture at home and abroad.

磅礴挺拔之氣勢

——是昭通的性格



奔騰豪放之神韻

蘊秀蓄珍之寶藏

——是昭通的精神

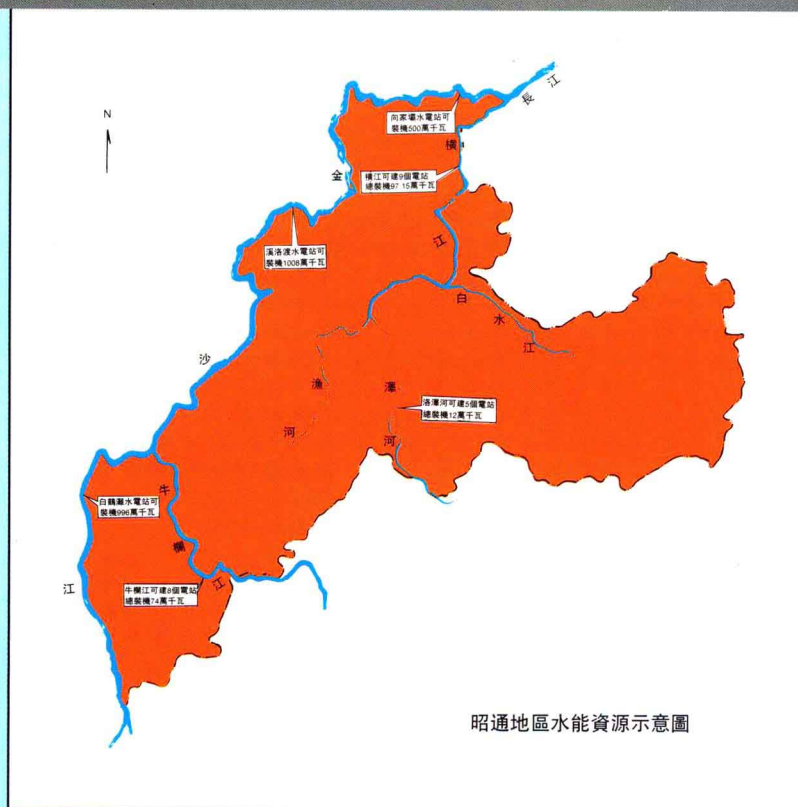
——是昭通的財富



# 富集的能源資源



標水岩瀑布



昭通地區水能資源示意圖

## 水能資源



白水江畔

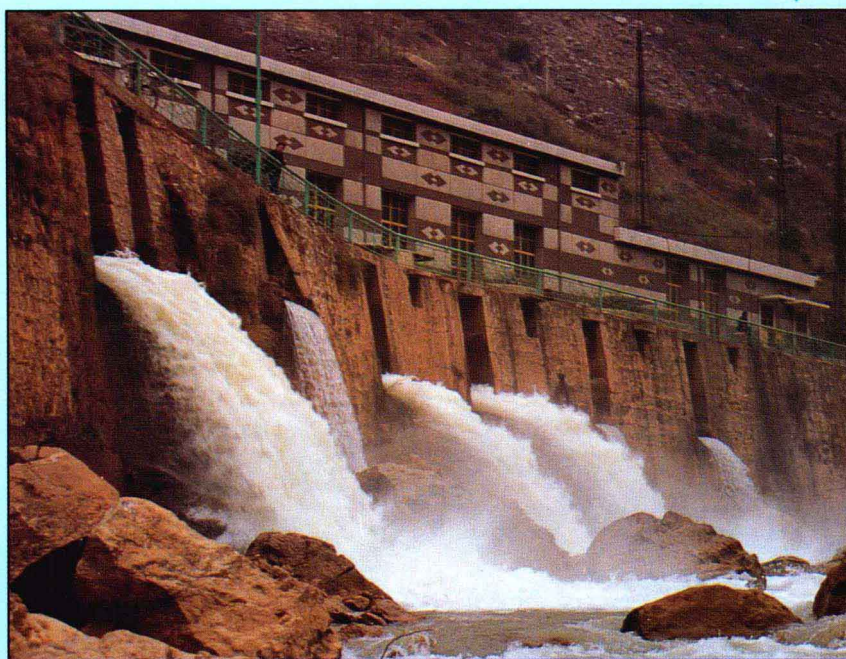
昭通能源資源富甲全滇。境內金沙江、牛欄江、橫江等三江四河的水能蘊藏量極為豐富，可開發的裝機容量約為1484萬千瓦。且天然落差大，水量充足，建電站具有裝機容量大、淹沒損失和工程量小之特點。

昭通盆地則堪稱中國的“魯爾”，褐煤儲量80多億噸，在全國已探明的年輕褐煤田中居第一位。地質構造簡單，覆蓋層薄而松軟，易于露天開采，可建大型坑口電站和進行綜合利用。無烟煤資源遍布全區，已探明工業儲量20多億噸，預測遠景儲量為110多億噸。

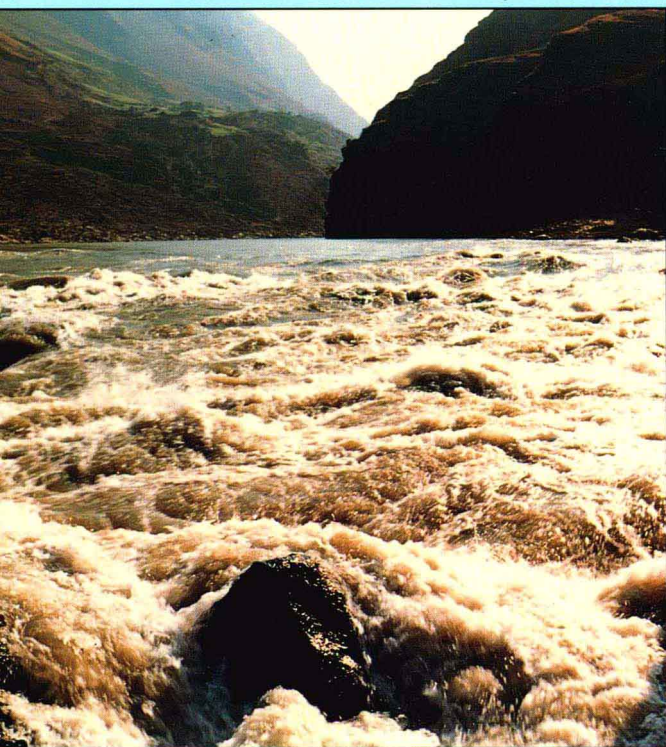
得天獨厚的水能、煤炭資源配套組合，實為昭通一大優勢。



洛澤河電站攔水壩



彝良麻窩電站



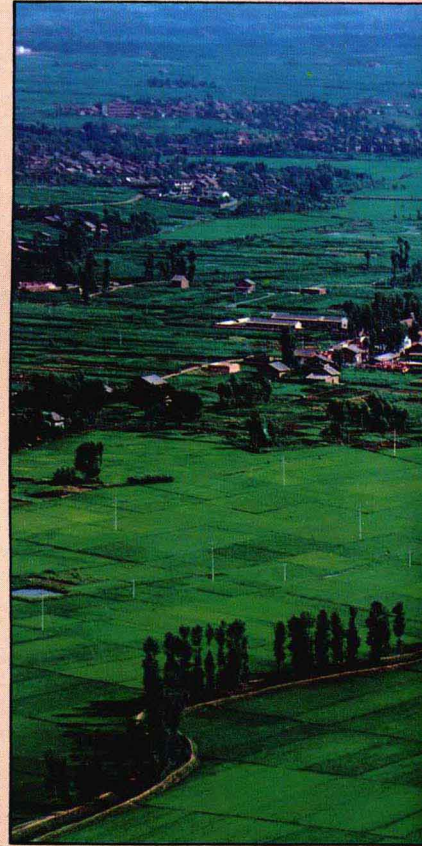
金沙江水滾滾來



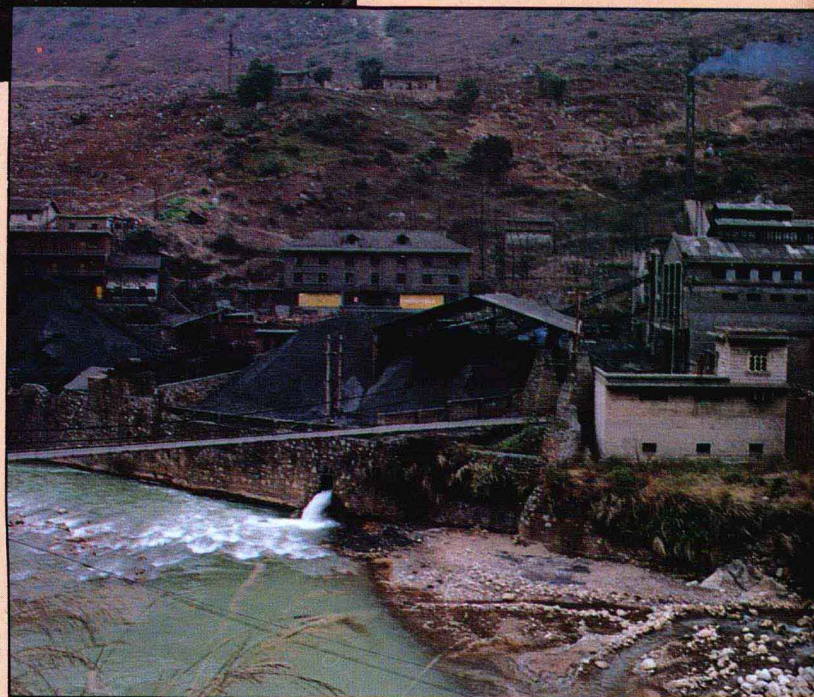
煤



褐煤露天開采



無烟煤



東方紅坑口電廠

# 炭 資 源



昭魯褐煤田，含煤面積142平方公里，煤層最厚271米，探明儲量80多億噸，煤層剝采比小於2。



高壓輸電綫



雲天化

# 深山藏瑰寶



无烟煤



氧化鉛鋅礦



方鉛礦

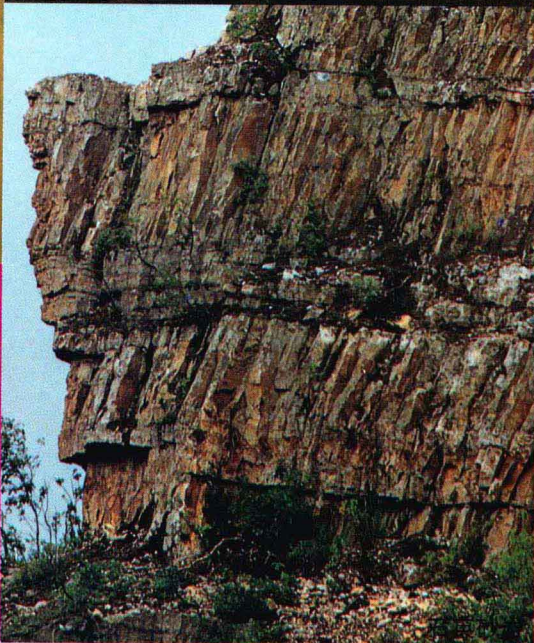


閃鋅礦



硫鐵礦

造物主厚愛昭通這塊地方，賦予這裡無數的寶藏。在已探明儲量的22個礦種中，尤以煤、鉛、鋅、硫、銀、磷、鎂、硅石、石膏、大理石等為優勢礦種，蘊藏量大，組合配套，開發條件好，工業價值高，具有發展冶金、化工和建築材料工業的廣闊前景。



硅石



深山藏瑰寶



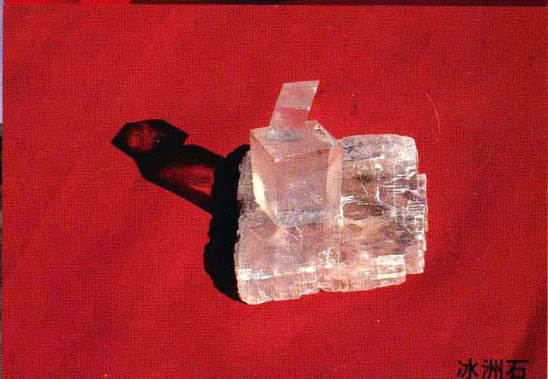
銀礦



銅礦



石膏



冰洲石

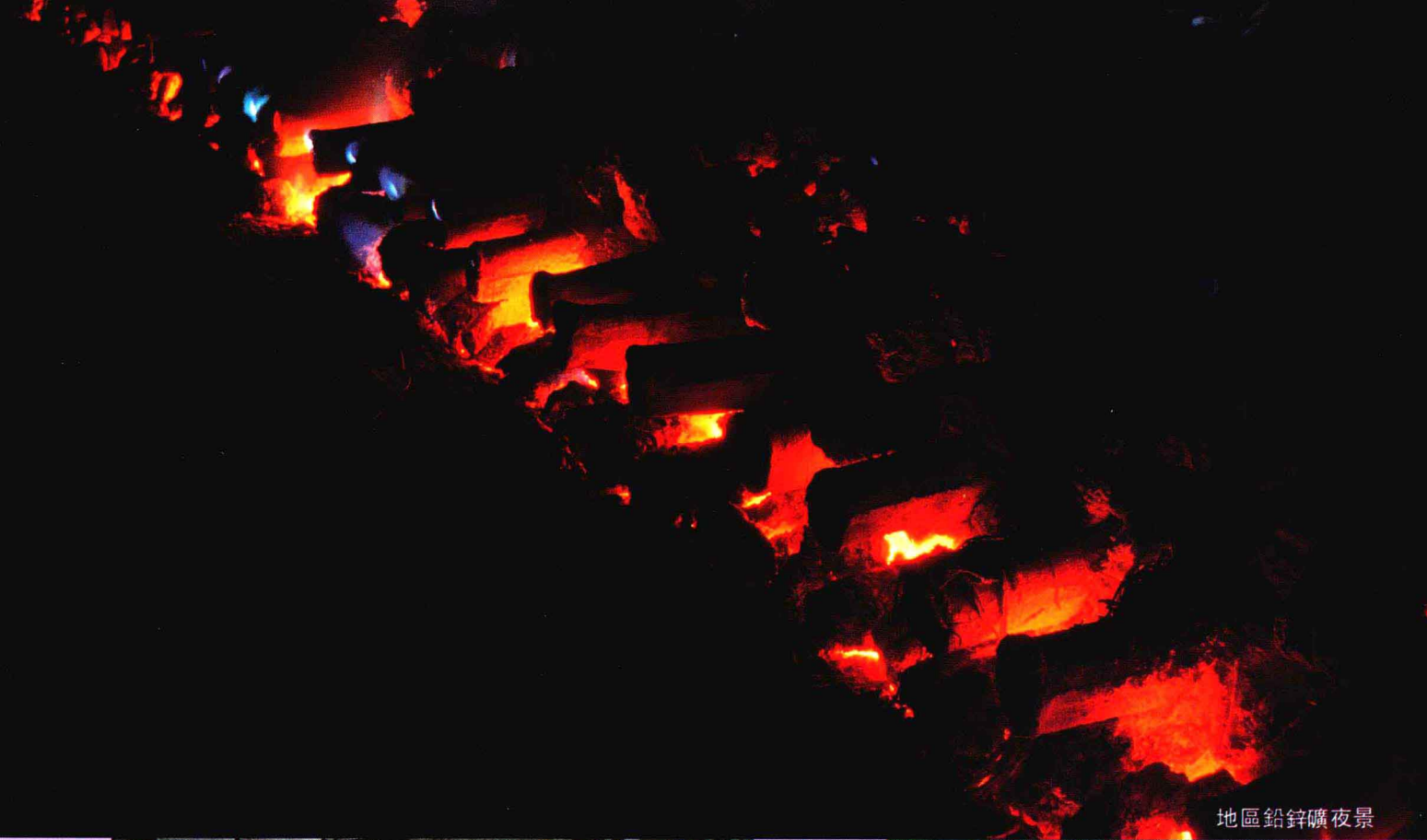


硫化鉛鋅礦



重晶石





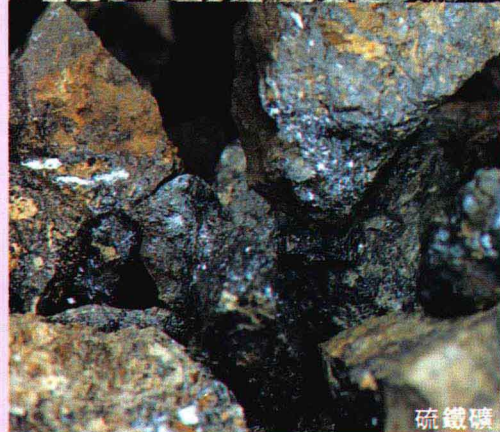
地區鉛鋅礦夜景



蒸餾鋅



硫精砂



硫鐵礦



待運出口硫磺



硫磺塊



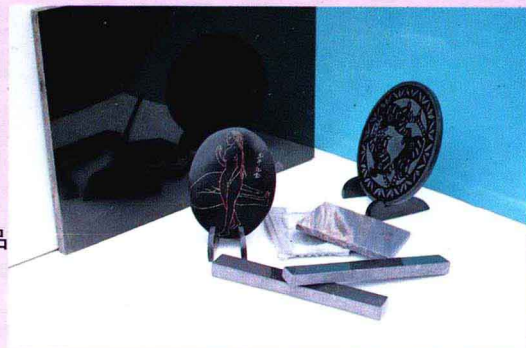
碳化硅



墨玉大理石工藝品



硅鐵



黃磷

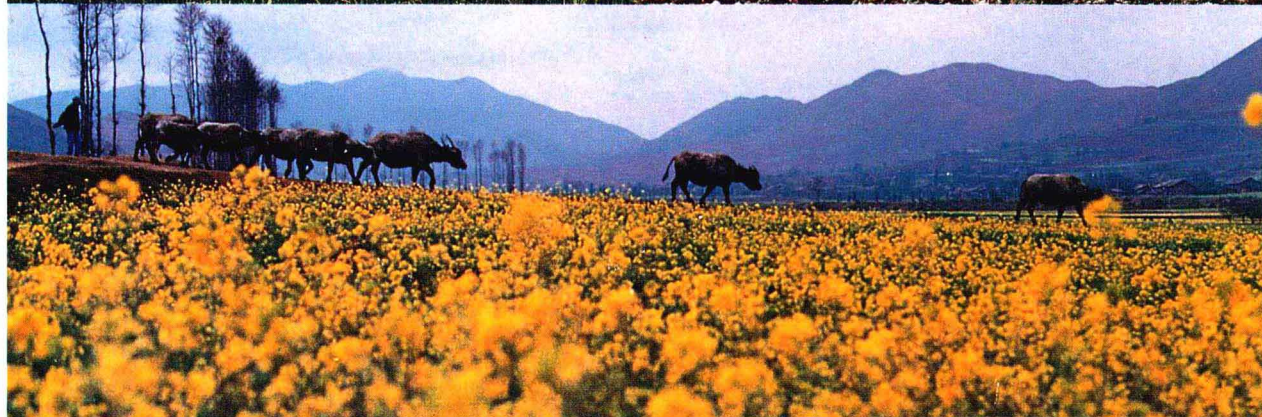


電石



昭通市第二水泥廠外景

# 高原農田美如畫



春

“一山分四季，十里不同天”  
的立體氣候，造就了昭通立體農  
業的生態環境。這裡水、旱農作  
物品種齊全，以旱地作物為主。  
糧食以玉米、薯類見長，品種繁  
多的豆類和烟葉、油料等經濟作  
物則以質優取勝。隨着生態建  
設、治水改土和科技興農，全區  
農業生產充滿盎然的生機。



蔗林



豐收

