

国家重点风景名胜区
桫欏国家级自然保护区
竹海国家森林公园
国家生态建设示范区

神秘的赤水

NATIONAL KEY SCENIC SPOT
NATIONAL NATURE RESERVE OF CYPERUS ROTUNDUS
NATIONAL FOREST PARY OF BAMBOO SEA
NATIONAL ECOLOGICAL CONSTRUCTION DEMONSTRATION ZONE

MYSTERIOUS CITY OF CHISHUI



中共赤水市委
赤水市人民政府

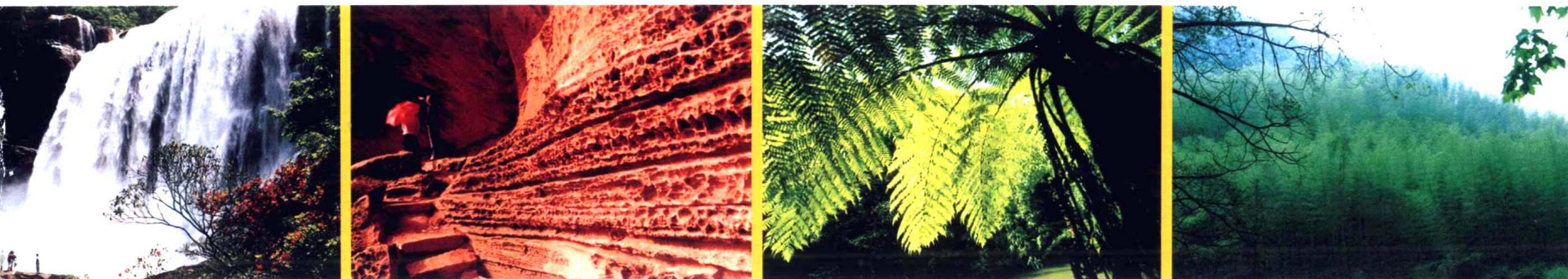
CHISHUI COMMITTEE OF THE COMMUNIST PARTY OF CHINA
PEOPLE'S GOVERNMENT OF CHISHUI CITY

国家重点风景名胜区
桫欏国家级自然保护区
竹海国家森林公园
国家生态建设示范区

神秘的赤水

NATIONAL KEY SCENIC SPOT
NATIONAL NATURE RESERVE OF CYPERUS ROTUNDUS
NATIONAL FOREST PARY OF BAMBOO SEA
NATIONAL ECOLOGICAL CONSTRUCTION DEMONSTRATION ZONE

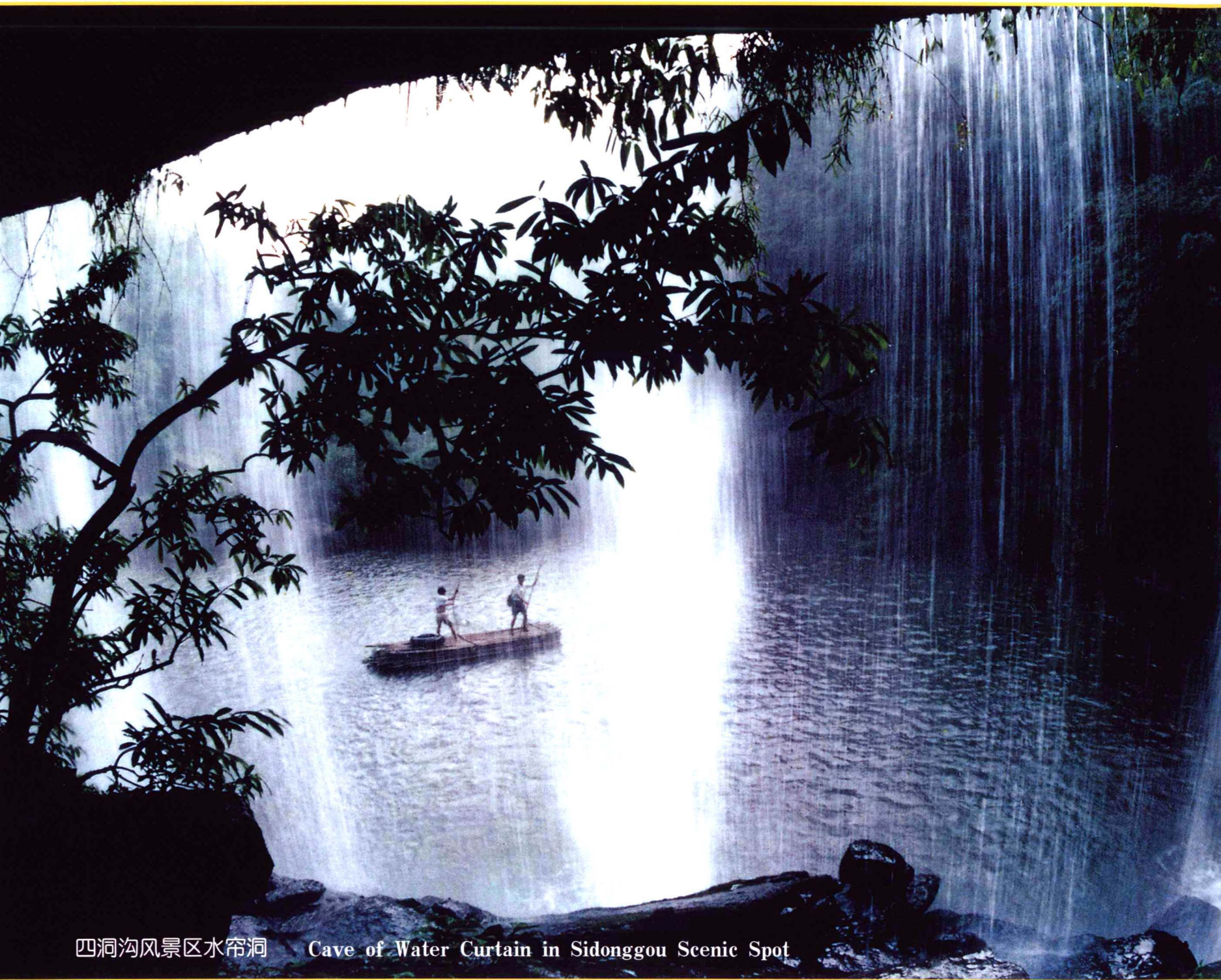
MYSTERIOUS CITY OF CHISHUI



中共赤水市委
赤水市人民政府

CHISHUI COMMTEE OF THE COMMUNIST PARTY OF CHINA
PEOPLE'S GOVERNMENT OF CHISHUI CITY





四洞沟风景区水帘洞 Cave of Water Curtain in Sidonggou Scenic Spot

神秘赤水概览

赤水市位于贵州遵义西北部，面积为1801平方公里，属于亚热带湿润气候。她背倚云贵高原，面向四川盆地，腰系名河赤水，北接川南，东邻重庆。赤水以她千姿百态的玉泉飞瀑、造化无穷的丹霞地貌、古朴神秘的桫欏群落、绿波万顷的苍翠竹海、原始幽奇的生态植被，形成鬼斧神工的壮丽景观。有诗赞云：“丹霞映日浑天成，绿海竹波通幽径，桫欏摇曳风添翠，飞瀑流泉玉乾坤”。赤水市由于生态环境优美，自然景观奇妙，被国务院和国家有关部委批准为国家重点风景名胜区、赤水桫欏国家级自然保护区、赤水竹海国家森林公园、国家生态建设示范区、全国园林绿化先进城市、全国环境综合整治优秀城市和全国水土保持生态环境建设示范县(市)。

A Survey of Mysterious Chishui

Chishui city is located in the northwest of Zunyi, Guizhou province, with an area of 1801 square kilometre, belonging to moist climate of subtropical zone. It backs the Yunnan-Guizhou plateau, faces the Sichuan Basin, with famous Chishui River running through its waist part, links south Sichuan in the north neighbours Chongqing in the east. Chishui has formed a magnificent wonderland with its various springs and waterfalls, uncanny red rock landforms, simple and unsophisticated *Cyathea spinulosa* forests, vast dark green bamboo, primitive and peaceful ecologic vegetation. There is a poem going like this: "Sunshines are mirrored on red rocks naturally, Blue sea of bamboo flows through quiet path, *Cyathea spinulosa* trees are flickering with wind, Flying waterfalls and springs come from the heaven and the earth." Chishui city has been approved to be scenic spot, *Cyathea spinulosa* national nature reserve, Chishui Bamboo Sea National Forest Park, National Ecologic construction demonstration zone, National Advanced City of Garden Afforestation, National Excellent City of Comprehensive Environmental Renovation and National Demonstration County (City) of Ecological Environmental Construction of Water and Soil Maintenance by the State Council and the departments concerned for its exquisite environment, natural and wonderful landscape.





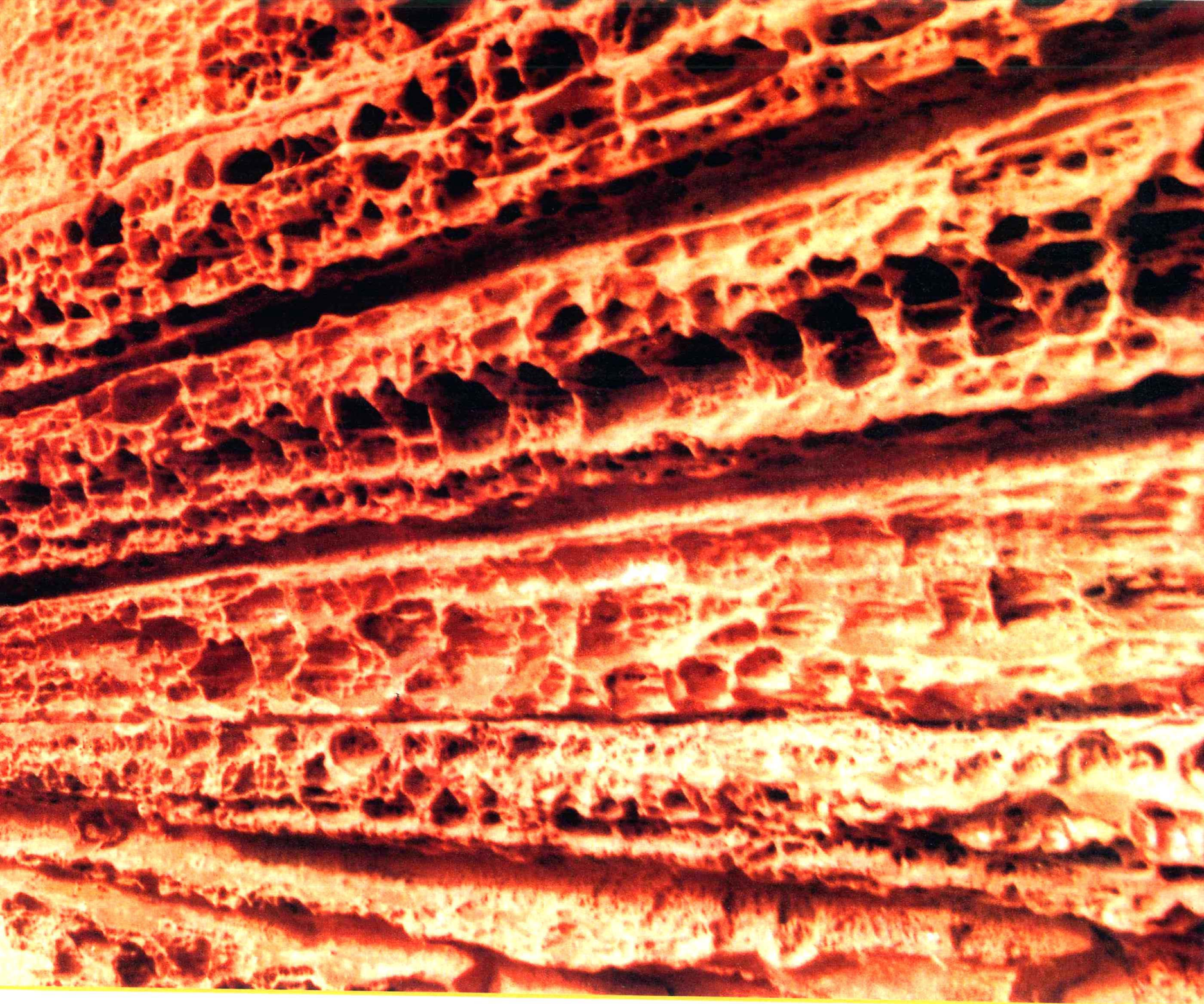
十丈洞大瀑布(高76.2米,宽80米)

Shizhangdong Waterfall (76.2-metre high and 80-metre wide)





丹霞似火 流光溢彩 Red Rocks and Colourful Glows





远古孑遗植物——桫欏

Cyathea Spinulosa - A plant of Remote Antiquity





竹海绵延 Stretches of Bamboo Sea





赵朴初先生为四洞沟景区题词：“四洞仙境”

Mr Zhao Puchu's Inscription for Sidonggou Scenic Spot: Fairyland of Four Caves



千姿百态的王泉飞瀑

赤水素有“千瀑之市”、“瀑布之都”的美誉。在绿波淼淼的楠竹林海，在古木森森的桫桯林中，在红艳似火的丹霞绝壁，千瀑万泉，千姿百态，“挂流三百丈，喷壑数十里”，“飞珠散轻霞，流沫沸穹石”。赤水瀑布，以高76.2米，宽80米的“神州又一瀑布奇观”十丈洞、“没有败笔的景区”四洞沟、“天然画廊”仁友溪和“竹海玉姑”神女瀑等瀑布群尤为著称，还有“流珠泻玉”、“佳人有约”、“水帘洞天”、“曲径通幽”等众多瀑布景观独特别致。赤水瀑布营造出梦幻般的遐想，构成了一幅幅美丽的画卷，无限生机，美不胜收。





洞中观瀑

Watching Waterfall in the Cave

Yuquan Flying Waterfall with Infinite Postures

Chishui always has good names of “city of one-thousand waterfalls” and “capital of waterfalls.” Thousand waterfalls and ten thousand springs are in their infinite postures among green waves of phoebe bamboo, ancient *Cyathea spinulosa* forests and on glowing red cliffs, just like “Hanging down from three hundred feet, Spraying into several ten kilometers,” “Flying pearls spread gentle rosy clouds, Flowing foams touch vault rocks.” Chishui Waterfalls are famous for Waterfalls, such as Shizhangdong Waterfall— “Another wonder of waterfall in China” --76.2-metre high and 80-metre wide, Sidonggou Waterfall— “A scenic spot without a faulty stroke”, Renyou Stream Waterfall— “Natural gallery” and celestial Maiden Waterfall — “Jade girl in bamboo sea”. Many other waterfall scenic spots, like “Flowing pearls pouring out jade”, “Beautiful woman making a date”, “Heaven in water curtain cave” and “Winding path leading to a secluded spot”, are unique. Chishui waterfalls have created a dreamlike reverie, thus, forming beautiful picture scrolls and presenting boundless vitality and charms.

神女瀑布

Waterfall of Celestial Maiden



惊呼银河落九天

Wonder at the Milky Way Falling from the Sky

