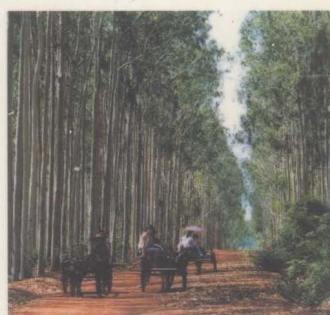
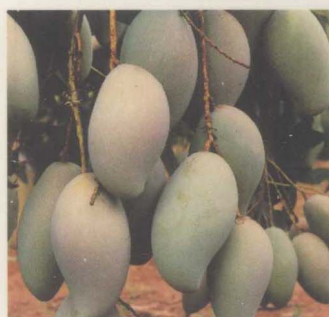


ZHANJIANG AGRICULTURE

湛江農業

ZHANJIANG AGRICULTURE





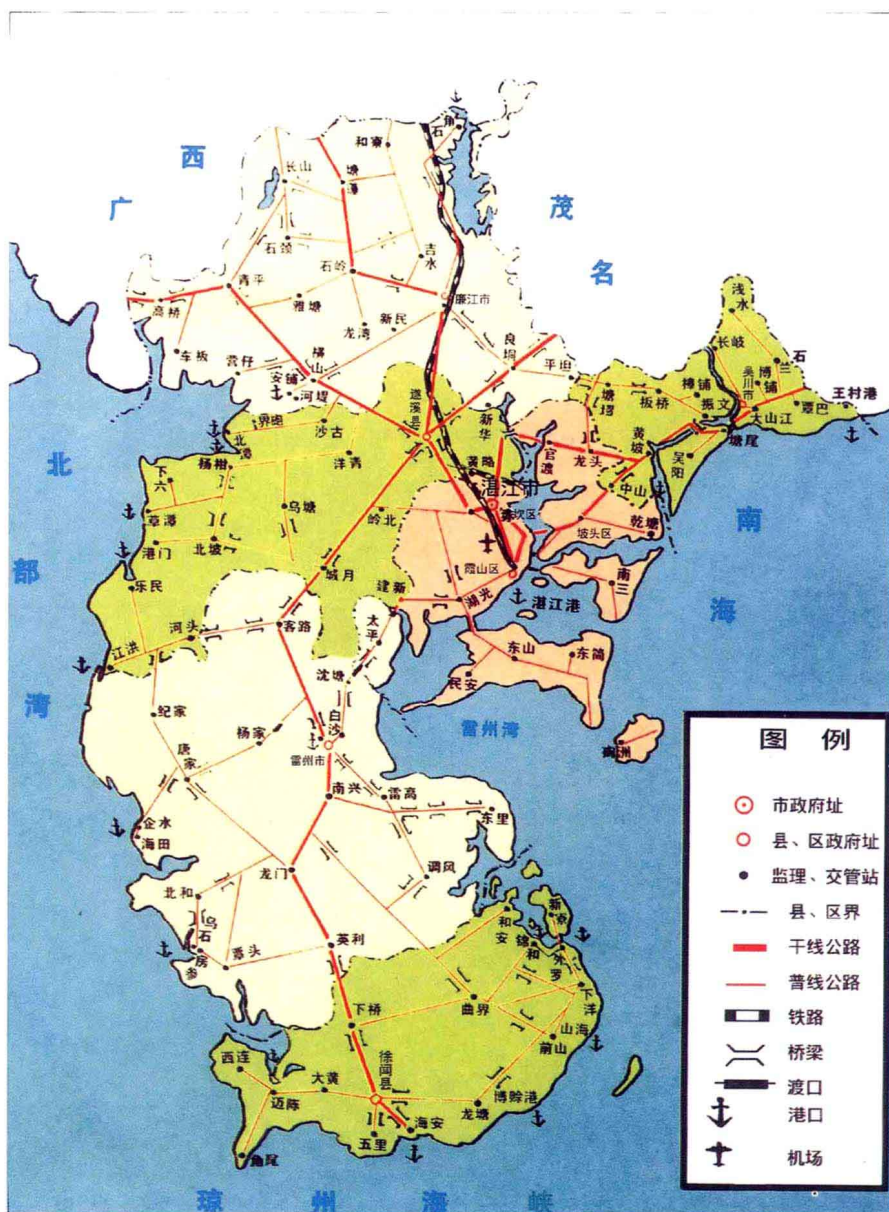
目錄

CONTENT

前言 PREFACE-----	1
湛江市地理位置 GEOGRAPHICAL LOCATION OF ZHANJIANG-----	4
湛江風貌 ZHANJIANG SCENERY-----	5
領導關懷 LEADER SOLICITUDE-----	7
種植業 CROPS-----	10
南亞熱帶水果 SOUTH-SUBTROP-----	13
冬季瓜菜 VEGETABLE-----	17
畜牧業 ANIMAL HUSBANDRY-----	19
熱帶作物 TROPICAL CROPS-----	23
林業生產 FOREST PRODUCTION-----	25
海洋經濟 MARINE ECONOMY-----	26
科技興農 SCIENCE SUPPORTED AGRICULTURE PROSPEROUS AND VIBRANT-----	30
鄉鎮企業 TOWNSHIP AND PRIVATE ENTERPRISES-----	32
農博會名牌產品薈萃 FAMOUS PRODUCTS OF AGRICULTURE FAIR-----	33
農業龍頭企業 AGRICULTURE IMPORTANT ENTERPRISES-----	40









華燈初放的湛江經濟技術開發區



美麗的港城



湛江市寸金桥公园一角



湛江港第一作业区



中共中央政治局委員、廣東省委書記李長春，省委常委、副省長歐廣源在湛江市書記周明理、市長周鎮宏陪同下視察湛江農業



中共中央政治局委員、廣東省委書記李長春，省長盧瑞華到湛江指導工作



省委副書記高祀仁在湛江市委書記周明理、副書記鄭流等領導的陪同下考察湛江



廣東省人民政府農業辦公室主任張遠貽在湛江視察農業



湛江市委書記周明理、副書記鄭流同志在遂溪檢查改水治旱工作

種植業

湛江市種植業主要有糧食、糖蔗、花生、蔬菜等。1998年全市糧食播種面積475萬畝(水稻340萬畝)，總產161萬噸，居廣東省的第二位，已建成1個國家級和2個省級糧食基地縣(市)，14個市級糧食基地鎮；糖蔗種植面積214萬畝，總產985萬噸，產糖104萬噸，約占全國的1/7，居廣東省的首位，是全國四大糖業基地之一；油料作物種植面積72萬畝，總產11萬噸，居廣東省的首位；蔬菜種植面積137萬畝，總產152萬噸，居廣東省的第三位。

The main crops in Zhanjiang are rice, sugarcane, peanut and vegetable. In 1998 the cultivated area of grain crops has reached 317,000 hectares (230,000 hectares of rice) with a yield of 1.61 million tons, ranking second in the province. At present one state-approved, two provincial-approved and 14 city-approved grain production bases have been established. Zhanjiang is one of the four sugar production bases in China. The cultivated area for sugarcane has reached 142,000 hectares with 9.85 million tons of sugarcane and 1.04 million tons of cane-sugar. Its output total. The cultivated land for oil crops has reached 48,000 hectares with a yield of 110,000 tons, ranking first in Guangdong Province. The vegetable area has reached 90,000 hectares with a yield of 1.52 million Tons, ranking third in the province.

高產優質水稻基地——雷州東西洋





源源不斷的運河水



金秋時節喜獲豐收

全國四大糖業基地之一



現代化糖業加工企業



蔗林如海

水果飄香

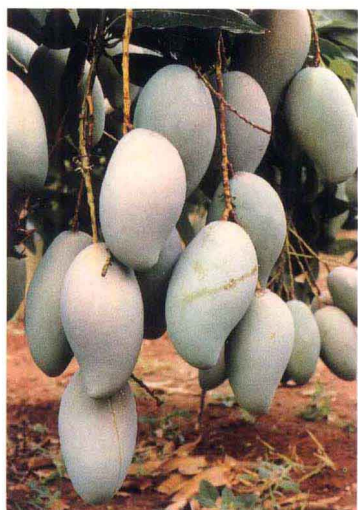
湛江充分發揮南亞熱帶資源優勢，大力發展名、特、優、稀、新熱帶亞熱帶水果，形成了前所未有的水果生產熱。1998年全市熱帶、亞熱帶水果總面積達94萬畝，總產58萬噸，分別比1987年增長3.5倍和7.9倍，居廣東省第二位。其中菠蘿22萬畝、芒果14萬畝、荔枝20萬畝、龍眼13萬畝、紅橙2萬多畝。紫花芒被評為第二、三屆農博會名牌產品，巴厘菠蘿被評為第三、四屆農博會名牌產品，紅橙被評為第二、三、四屆農博會名牌產品，是中國“菠蘿、芒果、紅橙之鄉”。



高產香蕉

Taking advantages of the South-Asia tropical resources, much attention has been paid to the development of rare, high-valued and excellent-quality tropical and subtropical fruits. This farmer's initiative for fruit production has been greatly heightened. By the end of 1998, the cultivated land of tropical and subtropical fruit has reached 62,000 hectares with a yield of 580,000 tons, increasing 3.5 and 7.9 times respectively over that of 1987, ranking second in Guangdong province. Among these are 14,700 hectares of pineapple; 9,700 hectares of mango; 17,000 hectares of banana; 14,400 hectares of lichee; 8,700 hectares of longan; 17,000 hectares of orange. The purple mango has been listed as "A Famous Brand Product" in the second and Third Agriculture Exhibition Fair. The Pali Pali Pineapple has been listed as "An Excellent Product" in the Third and Fourth Agriculture Exhibition Fair and the Red Orange has been listed as "A Famous Product" in the Second and Fourth Agriculture Exhibition Fair. So Zhanjiang is called the hometown of pineapple, mango and orange.





芒果



木瓜



龍眼



荔枝

水果飄香

- ① 菠蘿罐頭加工
- ② 菠蘿豐收
- ③ 菠蘿罐頭遠銷國內外
- ④ 萬畝菠蘿園

