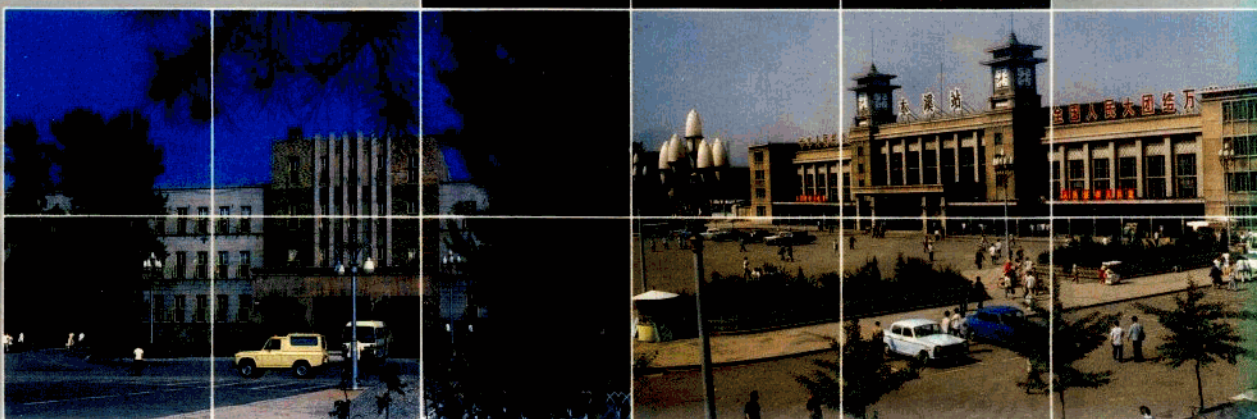
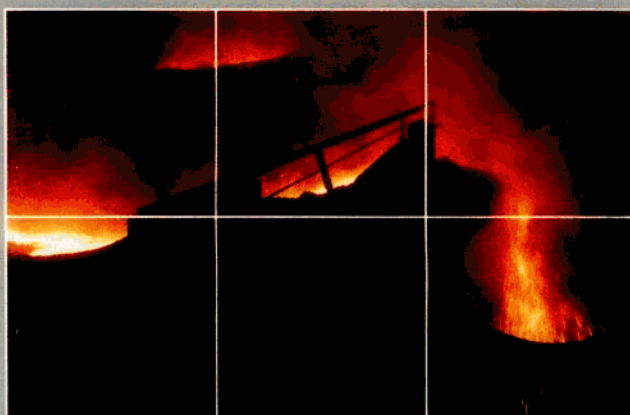


BXJJ

本溪经济简介

BRIEF INTRODUCTION TO
ECONOMY ABOUT BENXI



本溪經濟簡介



本溪市市長于國磐

本溪市位於遼寧省東南部，北接沈陽、撫順，南連丹東，西毗遼陽，東鄰通化，面積8,348平方公里。全市轄兩縣四區，總人口145萬人，其中城鎮人口91萬。有漢、滿、回、朝、蒙等22個民族。

本溪境內山巒起伏，河流縱橫，自然資源豐富。現已發現礦產資源100余種，其中鐵、銅、鉛、鋅、煤、磷、石灰石、粘土、砂石、石膏、滑石、大理石等礦藏儲量極為豐富。境內有渾江、太子河等12條大中河流，80多條支流，水利資源合計約33萬畝。全地區有植物80個科，628種。有人參、鹿茸、細辛、黃芪、刺五加等中草藥260多種，其中人參年產量達60多萬公斤，是遼寧省的重點藥材基地。還有獼猴桃、山楂、山野菜、植物香料等多種山貨野果資源。山林面積達900多萬畝，是遼寧省主要木材生產基地。

本溪是近代工業發展歷史較長的重工業城市，是我國主要的原材料生產基地，素以“煤鐵之城”著稱。經過幾個五年計劃的建設，冶金、機械、煤炭、建材、化工、電子、輕紡等工業得到了迅速發展。全市有工業企業900多個，工業產品3000多種，其中150多種產品獲國家、部和省優質產品稱號。高級鑄造生鐵性能優良，馳名中外，被譽為“人參鐵”；主焦煤以含硫低，粘接性強，聞名於世。年產生鐵340萬噸；鋼材140多萬噸；礦渣水泥180多萬噸；原煤140多萬噸。特種鋼、鋁合金、工業泵、化肥、絹絲綢、糖精鈉等工業產品在全國全省佔有重要地位。有90多種產品銷

往世界40多個國家和地區。

本溪的農林牧副漁業發展較快，耕地面積80余萬畝，糧豆總產量1.75億公斤左右。林業佔有重要地位，森林覆蓋率達56.9%，木材蓄積量約佔全省26%以上，樹種繁多，以柞、樺、楊為主，還有紅松、刺楸、黃菠蘿、水曲柳等珍貴樹種。草河口人工紅松林國內外有名，被稱為紅松之鄉。畜牧業和漁業生產也有較大發展。

本溪交通發達，境內有鐵路近200公里，鐵路專用綫40條，鐵路貨運量3,100萬噸，本溪站是沈丹綫、溪遼綫和溪田綫的樞紐。公路遍及全市城鄉。總長度1,763公里，貨物周轉量27,740萬噸公里。

本溪科技、教育、衛生、文化等事業發展迅速。全市有各類專業科研院所19個，廠辦科研機構119個，各類專業技術人員42,365人。全市有大專院校5所，中等專業學校12所，技工學校17所，職工中學26所，中、小學校623所。全市現有衛生機構410個，地區以上醫院76所，療養院2個，門診部（所）302個，有衛生技術人員10,555人。市內有影劇院9座，藝術單位15個，並有歌舞、話劇、評劇、京劇等專業演出團體。體育運動水平不斷提高，乒乓球、自行車、競走和象棋運動員在國際比賽中多次為國家爭得了榮譽。

本溪山川秀麗，風景優美。既有景色獨特的本溪湖、本溪水洞、九頂鐵刹山、關門山等名勝，又有著名的療養區溫泉寺、湯崗子溫泉，還有廟後山古人類遺址、明長城、古城堡、古邊塞等舊址。僅本溪水

洞每年就接待中外游客達百萬人。

黨的十一屆三中全會以來，本溪市人民政府貫徹“對外開放、對內搞活”的方針，結合本溪的實際制定了“關於發展橫向經濟聯合和協作的優惠辦法”，積極開展對外經濟技術聯合協作。目前，本溪已與全國四十多個市地建立了經濟技術協作關係，與全國八十多所大專院校和科研機構

建立了技術協作關係，並參加了遼寧中部七城市聯合羣體，有力地促進了本溪經濟的發展。同時，加強了交通、能源、通訊、旅游等基礎設施的建設，努力創造對外聯合協作的條件，使投資環境不斷得到改善。我們熱誠歡迎全國各地區和國家各部門及其所屬企事業單位和各界人士來溪進行橫向經濟技術聯合和協作。

Benxi is situated in the Southeast of Liaoning, facing north Shengyang, wushung, Connecting South Dandong, bordering west on Liaoyang, and east on Tonghua, with an area of 8348 square kilometres. It has a population of 1,450,000 including 910,000 town inhabitants with two counties and four districts under its authority. There are 22 nationalities in it including Han, Manchu, Hui, Korean, Mongolian, etc.

Within the boundary of Benxi are undulating hills and rivers cross with abundant natural resources. Now more than 100 kinds of minerals have been found such as iron, lead, copper, zinc, coal, phosphorus, limestone, clay, silicon, gypsum, talcm and marble. There are 12 rivers big and medium such as Hunjiang (river), Tai Zhi River with over 80 branches. The total electrical power dirived from water resources is about 330000 kw. In the whole region of Benxi, there are 80 subjects of plant deviding into 628 kinds, including 260 varieties of Chinese herbal medicine such as ginseng, young pilous antler, milk vetch, wildginger. acanthopanax. Among them, the annual out put of ginseng reaches over 600 thousand kgs. Moreover there are many varieties of mountain products and wild fruits such as yangtao actinidia, fruit of hawthorn, mountainous wild herbs and plant perfume. Benxi is the key base of producing medicine in Liaoning. The forest area reaches over 9 million mu. It becomes the main timber production base of Liaoning.

Benxi is a heavy industrial city with a long history in the development of mordern industry. It's a main raw material production base in the country and famous for the title of "Coal and Iron City" Through the construction for several five-year plans, it has got a rapid development in industry such as in metallurgical, machinery, coal, construction building, chemical, electronic, Light industry and the textil, which consist of more than 900 enterprises with 3000 kinds of mdustrial products. More than 3000 of them have respectively won the tille of "Stale High-quality product" or "Department High-quality Product" or "Provincial High-quality Product". The high-grade cast pig iron is fine in feature and called "Ginseng Iron"; coke is also renowned for its low sulfur-phosphorus contents and strong cohesiveness at home and abroad. The annual out put of pig iron is more than 3,400,000 tons, steel, 1,400,000-odd tons, slad cement, 1,800,000-odd tons. and raw coal, 1,400,000-odd tons. The special steel, aluminium-alloy, industrial pump, chemical fertilizer, spun silk fabric and saccharin sodium have taken an outstanding position. More than 90 of the products have been exported to more than 40 countries and regions over the world.

Benxi has got a rapid development in the fields of Farming-Forestry-animal husbandary-side-line production-fishery. There are over 800,000 mu of the cultivated area in it. The total out put of grains and beans is about 175

million kgs. The forestry owns the key position. The coverage of forest reaches 56.90%. Timber storage capacity occupies 26% of that in Liaoning Province. There are many kinds of trees, mainly birch, poplar and still precious trees such as Korean pine, northeast China ash. The artificial Korean pine forest in Caohekou is well known at home and abroad for the honourable name by "Korean Pine Countryside", where the animal husbandry and fishery have also got a considerable development.

The traffic is flourishing in Benxi, there are about 200kms of railway line and 40 special lines. The volume of rail freight is 3,100,000 tons. Benxi becomes a hub of communications between Shengyang-Dandong line, Benxi-Liaoyang line and Benxi-Dandong line. Highway spreads around the city and towns with the total of 1763 kms length of line and 277,400,000 tons kilo-metre of turnaround volume of freight.

Science and technique, education, health and culture and so on are being developed rapidly. Benxi has 19 professional scientific research institutes of all subjects and 119 factory-run scientific organizations with 42,365 professional technicians of all kinds. It has 5 universities and colleges, 12 secondary technical schools, 7 technician schools, 26 workers' middle schools, 623 elementary and secondary schools. Now it has established 410 sanitation units including 76 hospitals at the region level, 2 sanatoriums, 302 clinics all together with 10,555 health technicians. For the recreation activities, it has 9 cinemas and theatres, 15 art units with the professional producers such as song and dance troupe, opera troupe. Northeast opera troupe, Peking opera troupe.

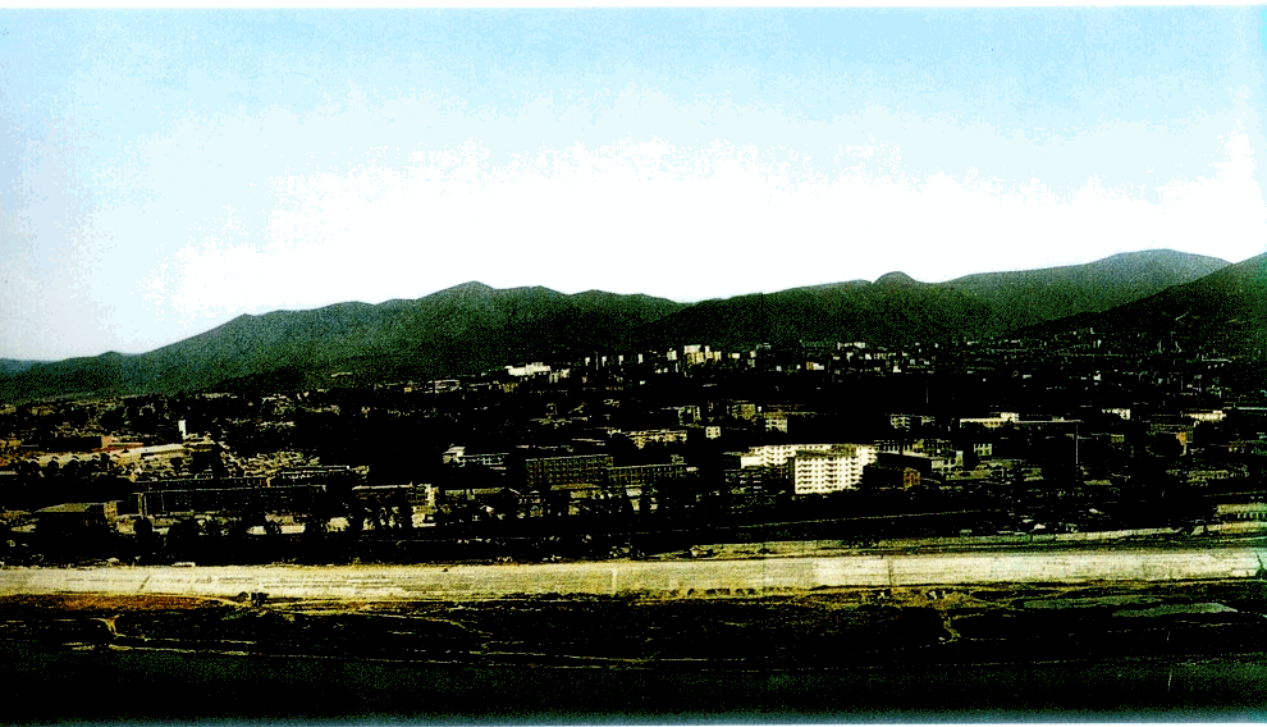
In sports, the players from Benxi have many times to win the honour in international tournament for table tennis, cycling, Chinese chess, heel-and-toe walking race increasingly

raising their sporting level.

In Benxi you will see green hills and clear waters, in deed a beautiful landscape. Wherever you can not only go sight-seeing on the places of historic interest and scenic beauty such as the Benxi lake, Benxi Water Cave, Jiudingtishan mountain, Guan Men mountain, but also enjoy the famous recuperation zone-Wen Chuan Temple, Tongguanzi (Hot Spring), and the Miaohoushan ancient sites and the sites Ming Great wall, Guchengbao (ancient castle), Gubiansai ancient frontier fortress), etc. Every year, only Benxi water cave can accept about one million foreign and domestic visitors.

Since the 3rd plenary session of the 11th Central Committee of the Party, Benxi People's Government has carried out a policy of "Open to foreign country for promoting economy prosperity at home" and combined theory with practice in Benxi to work out a preferential treatment on developing crosswise economical and technical cooperation with an aim to actively unfold the foreign economical and technical cooperation. At present, Benxi has established economical and technical cooperation relation with more than 40 cities throughout the country and associated with more than 80 universities and colleges or the scientific research institute and joined a integration group consisting of 7 cities in the central part of Liaoning Province. By so doing, Benxi economy has been greatly promoted. Meanwhile Benxi has strengthened the construction of transportation, energy, communication and tour service in an effort to create a fine condition for foreign economic and technical cooperation and to improve environment for investment constantly.

Any organization or figures from all walks of life throughout the country are received with open arms to make economical and technical cooperation.



目錄 CONTENT

1 · 本溪經濟簡介 ·····	1-3
Brief Introduction to Economy About Benxi	
2 · 本溪市行政區劃略圖 ·····	4-5
Administrative Division of BenXi City	
3 · 本鋼二鐵廠 ·····	6-7
Benxi No.2 steel Works	
4 · 本鋼連軋廠 ·····	8
Benxi Continuous Iron and steel Rolling Mill	
5 · 本鋼第一機修廠 ·····	9
Bengang first machinery repairing factory	
6 · 北台鋼鉄廠 ·····	10
BEITAL IRON AND STEEL WORKS	
7 · 本溪重型汽車製造廠 ·····	11
BenXi heavy duty machinery factory	
8 · 本溪合金廠 ·····	12
Ben Xi Alloy Factory	
9 · 本溪鎢鉬廠 ·····	13
BenXi Wolfram/Molybdenum Product Factory	
10 · 本溪水泵廠 ·····	14
BenXi Water Pump Factory	
11 · 本溪市京溪聯營汽車改裝廠 ·····	15
JingXi Joint Automobile Refitting Factory	
12 · 本溪市鉄城鋼管廠 ·····	16
BenXi Tiecheng Steel Pipe Factory	
13 · 本溪市微電機廠 ·····	17
BenXi Minimotor Factory	
14 · 本溪化肥廠 ·····	18
BenXi Chemical Fertilizer Plant	
15 · 本溪有機化學廠 ·····	19
BenXi Organic Chemistry Plant	
16 · 本溪市合成化工廠 ·····	20
BenXi Synthetic Chemical plant	
17 · 本溪市石橋子化工廠 ·····	21
BenXi ShiQiao Zi Chemical Factory	
18 · 本溪市鍍管廠 ·····	22
BenXi Plating Steel Tube Plant	
19 · 本溪市制藥廠 ·····	23
BenXi Pharmaceutical Factory	
20 · 工源水泥廠 ·····	24-25
BenXi Gongyuan Cement Factory	
21 · 本溪市恒仁縣國營參茸場 ·····	26
The State-owned Heng Ren Ginseng & Deer Antlers Farm of BenXi City	
22 · 本溪市無線電一廠 ·····	27
BenXi first radio factory	
23 · 本溪市紡織廠 ·····	28
Textile Mill of BenXi City	
24 · 本溪市針織一廠 ·····	29
The First knitting Mill of Ben Xi City	
25 · 本溪市啤酒廠 ·····	30
BenXi Brewery	
26 · 本溪市膠管廠 ·····	31
Rubber Hose Factory of BenXi City	
27 · 本溪市環保設備廠 ·····	32
Environment Protection Facility Factory of BenXi City	
28 · 本溪市名優產品目錄 ·····	33-34
Catalogue of Famous Brand Product Made in BenXi	
29 · 本溪市人民政府關於發展橫向經濟技術聯合 和協作的優惠辦法 ·····	35-36
Preferential treatment for developing cross wise economical- technical connection and cooperation by BenXi Municipality	



本溪市行政區劃略圖



面積8348平方公里

本鋼有二十一項指標名列全國前三名

一九八六年上半年全國重點鋼鐵企業主要技術經濟指標評比中，本鋼有二十一項指標名列前三名，占考核指標總數的百分之四十七點七。其中，牙輪鑽效率、汽車效率、生鐵合格率、熟料比、電爐利用系數、初軋坯合格率、熱軋溫度、鋼材合格率八項指標奪得全國等一名；初軋坯成坯率等八項指標奪得全國第二名；燒結利用系數等五項指標奪得全國第三名。

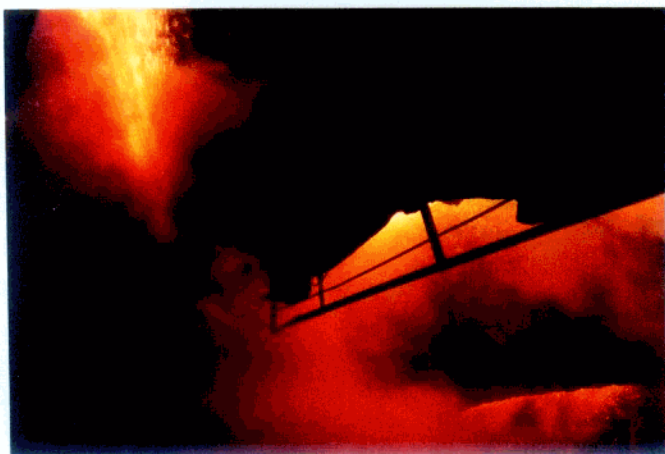
Benxi Iron and Steel Company has its 21 indexes to be listed in the national first three places.

According to the conclusion of appraisal of main technical and economical indexes of major iron and steel factories in China, the Company's 21 indexes are listed in the first three places, accounting for 47.7 per cent of all the checked indexes. Among them, the efficiency of geared rock bit, efficiency of automobile, the qualified rate of pig iron, the grog ratio, the utilization factor of electric furnace, the qualified rate of bloom, the temperature of hot ingot. The qualified rate of steel products,—— eight indexes got the national first place. Another eight indexes, including the finished rate of bloom, got the second place. And five indexes, including sintering utilizing coefficient the third place.





本鋼已有七十多年的生產曆史，是擁有礦山、煉鐵、煉鋼、軋鋼和動力、運輸、機修等廠礦的大型鋼鐵聯合企業。職工總數十三萬五千多人，固定資產原值二十六億多元，具有年產生鐵三百一十萬噸、鋼一百六十萬噸、鋼材一百二十萬噸的綜合生產能力。隨着國民經濟建設的發展和社會需求的不斷增加，本鋼將進一步挖掘出內部潛力，發揮出特有的優勢，為發展本鋼、建設本溪做出更大的貢獻。



It has experienced more than 70—year history of production. It's a heavy integrated iron and steel works with mine, blast furnace plant, steel mill, steel rolling mill, power station, transportation facility and machinery repairing shop.

It has a total of staff members 135,000 persons with original value of fixed assets—26,000,000 yuan and it has a comprehensive production capacity with an annual out put of pig iron 31,000,000 tons, steel, 16,000,000 tons and steels, 1,200,000 tons.

With the development of national economy and the constant growth of social requirement; this works will try its best to go further to dig its own internal potential and to display its particular advantages for making greater contribution to the construction of Benxi.



本溪鋼鐵公司鑄造生鐵，除硫、磷低外，其它有害微量干擾元素均低于國內各生產廠家，屬於國際高純生鐵範疇。博得國內外用戶贊譽，被稱之為“人參鐵”。

The cast pig iron, produced in the Benxi Iron and Steel Company has low sulphur, phosphorus and other harmful trace interfering elements which are lower than that of produced in other factories within the area of China. It is ranged super pure pig iron in the world and has been praised as "ginseng iron" by consumers inside and outside the country.





本鋼1700熱連軋機具有連續化、自動化、高速化生產特點。目前已能生產造船板、容器板和鍋爐板、花紋板、汽車專用板、低合金板等八大鋼類，年生產能力達100萬噸。產品銷往全國各地深受用戶歡迎。

Type-1700 continuous Mill for hot-rolling has continuous, automatic mechanical feature at high speed production, capable of producing 8 kinds of plates such as ship plate, container plate, boiler plate, checkered plate, plate for auto purpose, low alloy plate, the annual output of them reaches one million tons which are sold at all corner of the country and warmly received by users.





我廠是一個具有七十多年曆史的老廠，技術力量雄厚，設備齊全，具有生產大宗機械產品的能力，生產的主要產品有燒結機多管除塵器旋風子外殼和1070M²高爐WC浸潤焊小鐘斗。

燒結機多管除塵器旋風子外殼，是采用優質鉬鉍稀土—錳合金白口鑄鐵材料制成，系全國獨家生產。經用戶使用証明，機械性能良好，被用戶譽為“信得過”的長壽旋風子外殼，曾于八〇年和八三年兩次被評為冶金部優質產品。

1070M²高爐WC浸潤焊小鐘斗，其密合帶采用獨特的WC浸潤焊工藝，系國內首創。具有最佳抗磨損耐沖蝕性能及優良的綜合機械性能，于八四年榮獲部優產品稱號。

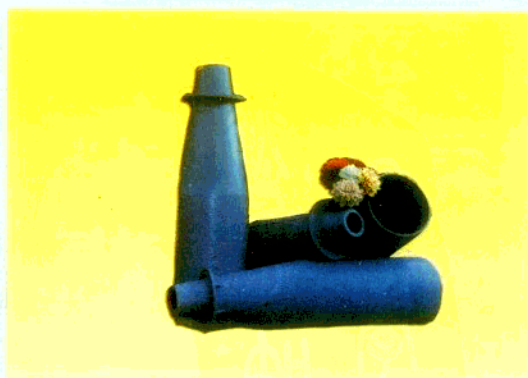
本溪鋼鐵公司第一機修廠

With 70 years history, our factory has much experience in technique. It possesses complete equipment and facility to manufacture varieties of mechanical products. The main products are multiple pipe cyclone case of agglomerant machine and bell of 1070M² furnace, made by WC lubricated welding.

Multiple pipe cyclone case of agglomerant machine, made of best niobium molybdenum rare earth—manganese alloy white cast iron, is unique product in China. Customers praise this long life cyclone case with good mechanical performance as a credible product. It twice won prize from metallurgical ministry in 1980 and 1983.

The special WC lubricated welding technology is used for sealing bell of 1070M² furnace and this technology is initiative in China to get the best antifricition and anticorrosive performance as well as excellent mechanical performance of bell. This bell won prize of best product from ministry.

First machinery repairing factory of Ben xi steel corporation.



北台鋼鐵廠是一座中型鋼鐵聯合企業，主要產品有：鐵礦石、鐵精粉、鑄造生鐵、焦炭。

鐵礦石儲量大，磁性率高，可選性好，馳名全國。

“北台牌”鑄造生鐵，在國內外享有很高信譽。一九八二年被評為遼寧省優質產品，一九八三年被評為冶金部優質產品。

該廠還生產350立米高爐。經過開爐後的試運行，高爐各部位、各系統運轉正常，各項性能和指標達到設計要求，產品質量也完全符合國家規定標準，試生產後，這座高爐將正式交付生產單位使用。

北台鋼鐵廠

廠址：遼溪鐵路北台站附近

電話：2588 2196

電掛：0669

Beitai Iron and Steel Works is a medium-size integrated complex. The main products of the Works are iron ore, refined ore-powder, cast iron and coke.

The iron ore produced by this Works is famous in China for its rich reserves, high magnetic conductivity and good dressing nature.

The cast iron named "BEI TAI PAI" is enjoying high prestige at home and abroad. In 1982 it was awarded the Quality Product of Liaoning Province and in 1983 the Quality Product of the Ministry of Metallurgical Industry of China.

The Works also builds 350 M'blast furnace which has successfully passed it's running test. The test shows that all the parts and systems of the blast furnace are running in good condition and all the performance and indexes are complied with the designing requirements and the product's quality is up to the state's standard as well. Upon completion of the running



test, the blast furnace will be delivered to the user.

Beitai Iron and Steel Works

Address: In the vicinity of the Beitai railway station of Liao-Xi railway line.

Telephone: 2588, 2196

Cable: 0669



該廠生產的LN392型68T礦用自卸汽車是仿照美國偉步公司75B型礦用自卸汽車測繪設計的。LN3101型108T電動輪自卸汽車也是借鑒美國120C電動輪自卸汽車聯合研製而成的。上述兩種車都已順利的通過國家級鑒定，鑒定結果一致認為，達到或接近國際同類先進車型水平，國家同意批量生產，並確定該廠為定點廠。

該廠還生產四個系列、十三個品種的各種改裝車。東風系列有：二翻、三翻、後翻、雙缸舉升式半掛；解放系列有：二翻、三翻、後翻、半掛；黃河系列有：後翻、礦用、半掛；紅岩系列有40T平板拖車。

用新型JZ350C型代替JG250型攪拌機換代已經完成，產品通過鑒定，已大批量生產，深受用戶歡迎。

本溪重型汽車制造廠

廠址：本溪市彩屯

電話：92242

聯系人：董慶儒

LN392 Model mine self-dumping truck with load of 68 Tons, made by our factory is designed on basis of 75B Model mine self-dumping truck of American Wape Company. LN3101 Model electric drive wheel self-dumping truck with load of 108 Tons is also designed according to same American 120C truck. These two types of truck have successfully passed the state appreciation. As their performance nears or reaches the advanced truck in the world, state approves and appoints our factory to make its batch production.

We also produce 4 series and 13 types of various modified truck, that is dual turnover, triple turnover, back turnover, two cylinder raised, half hanging for East Wind brand series; dual turnover, triple turnover, back turnover, half hanging for Liberation brand series; back turnover, mine use, half hanging for Yellow River brand series and flat truck with load of 40 Tons for Red Rock brand series.

The new JE350 Model mixer has successfully replaced the JG250 Model mixer after strict appreciation and begins mass production. It is welcome by customers.

Please contact with Mr. Dong Qin nua

Our address: Ben xi Heavy Machinery Factory

Chan dun, Ben xi city, China

Telephone: 92242





本溪合金廠建於1950年，現有職工2600人，其中工程技術人員160人。工廠占地面積20萬平方米，建築面積6.5萬平方米。主要產品有工業硅、各種鑄造有色金屬合金、銅管、棒材、鋁型材、鋁門窗框架、電解銅箔及化學分析用標準樣品等。

全廠推行現代化管理，建立了科學的質量保證體系。各種鋁合金、錫合金和電解銅箔的產量和質量都居國內首位，有十多種產品獲優質稱號。其中ZLD104鋁

合金一九八五年獲國家銀牌。產品信譽高，暢銷於國內外。

熱誠歡迎國內外客戶與我廠合作，發展貿易往來。

廠址：遼寧省本溪市明山區高峪街

電話：82807 電報：6855

電傳：80056 BAG CN

Ben Xi Alloy Factory was set up in 1950. It now has a staff of 2,600, of whom 160 are engineers and technicians. Its floor space is 200,000 square metres, of which building area is 65,000 square metres. The factory mainly produces industrial silicon, various kinds of casting nonferrous metal alloys, copper pipes and rods, aluminium materials, aluminium door frame and window frame, electrolysis copper foil and standard samples used for chemical analyses etc.

Our factory is carrying out the modernization management and has set up the scientific quality guarantee system. Quantity and quality of every kind of aluminum alloy, tin alloy and electrolysis copper foil have occupied the first place in China, of which more than ten kinds of products won the title of Quality Product and ZLD104 aluminium alloy awarded state's silver medal in 1985.

Our products are reliable and sell well at home and abroad.

We sincerely wish to co-operate with users at home and abroad and develop trade contacts.

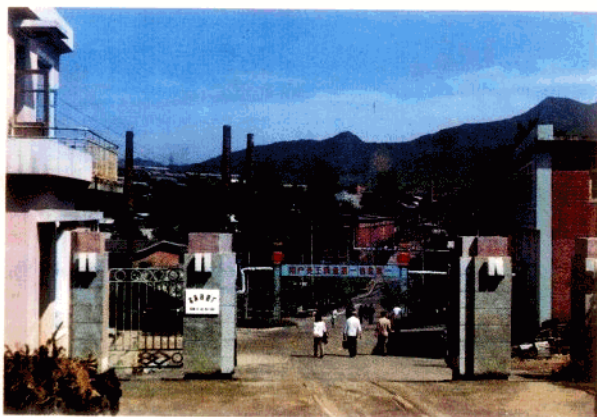
Address: Gao Yu Street, Ming Shan District, Ben Xi City, Liao Ning Province.

Telephone: 82807

Cable: 6855

Telex: 80056 BAG CN





本溪鎢鉬廠是國內唯一從鎢鉬精礦冶煉到其制品的專業廠家，建廠於1976年1月1日，佔地面積9.4萬平方米，固定資產1200萬元，建築面積3.1萬平方米，職工人數1074人。

本廠自六十年代初即開始生產鎢鉬制品。歷來堅持“激發全體職工創造精神，利用國內外先進技術，創第一流產品質量，第一流服務水平，第一流企業信譽”的辦廠宗旨。本廠與國內高等院校、科研單位建立了密切的科技業務橫向聯合。與日本、西歐、東南亞及香港等十多個國家和地區建立了廣泛的經濟、技術聯系。

本廠工藝、技術先進，計量檢測手段齊全，質量控制嚴格，產品質量在國內領先，主要產品性能指標達到或超過國際先進水平。

本廠願為您提供優質服務，敬請光臨。

廠址：中國遼寧本溪市

電話：82807

電報：0678

Ben Xi Wolfram/Molybdenum Factory, the only one specialized factory of its kind in China, is a complex of wolfram/molybdenum from smelting to finished products. It was set up on January 1, 1976 and has a floor space of 94,000 square metres, of which the building area is 31,000 square metres. The fixed assets are 12,000,000 Yuan and the total number of workers and staff is 1,074.

The factory began to produce wolfram and molybdenum products in the early sixties. Insisting the aim of arousing the creative spirit of the broad masses of workers and staff, utilizing the advanced technology at home and abroad in order to achieve first class product quality, first class service and first class credit, our factory has established not only close crosswise associations in scientific and technical business with universities, colleges and scientific research departments throughout the country, but also comprehensive economic and technical relations with more

than ten countries and regions such as Japan, West Europe, South East Asia and Hong Kong etc.

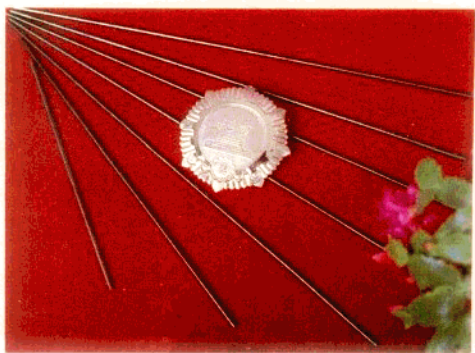
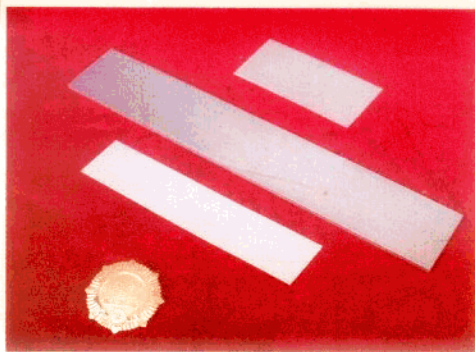
We have advanced technology, an integrated excellent inspecting system and strict quality control. Qualities of our products have taken the lead in their kind inside China. The function indexes of our major products are up to or surpassed the advanced national level.

We will provide excellent services for you. Visitors are welcome.

Address: Ben Xi City, Liao Ning Province, China

Telephone: 82807

Cable: 0678



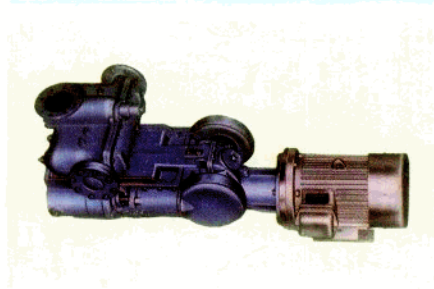
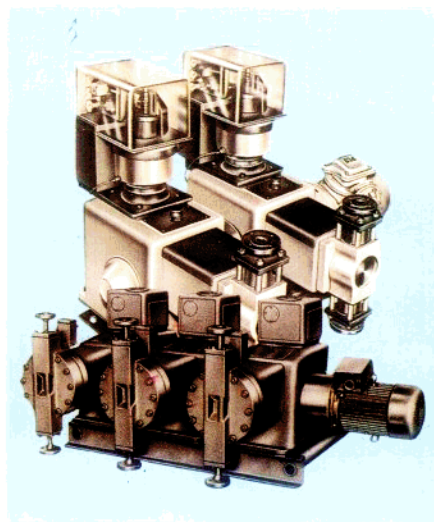


本溪水泵廠是機械委往復泵定點生產廠，設計生產各類往復泵已有三十多年曆史。工廠新產品開發能力強，工藝設備齊全，生產組織完善，有先進的計算機控制檢測系統，建立了完善的質量保證體系。

目前生產的主要產品有高壓泵、計量泵、船用泵、稠油泵、隔膜泥漿泵、油隔離泥漿泵、蒸汽熱油泵等八個系列，千余個規格。其中：3DS—6/200型高壓泵一九八五年獲國家銀質獎。船用泵、計量泵獲遼寧省優質產品。船用泵獲得國家船檢局型式認可。

我廠引進西德KSB公司HKZ船用往復泵已通過聯合考核驗收，將大量投放市場。

本廠以“質量第一，用戶至上”為宗旨，全心全意為用戶服務，歡迎訂貨，歡迎合作。

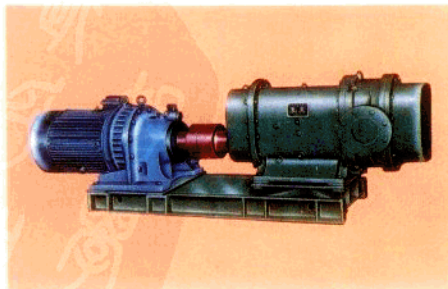
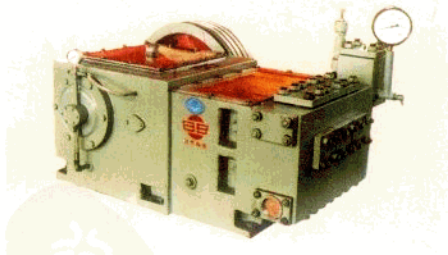


BenXi Water Pump Factory is appointed by the National Machinery Building Committee to design and produce various kind of reciprocating pump with a history of 30 years. It is superior in development of new products fully equipped and well managed. With an advanced computer control and test means, it has established a perfect quality assurance system.

Now the main products of ours are high pressure pump, pump with volume meter, pump for ship, thick liquid pump, diaphragm dredge pump, oil-isolated dredge pump, vapour heated-oil pump. The total products up to eight series, over a thousand specifications. Among them, the 3DS 6/200 high pressure pump won the national silver medal in 1985, the pump for ship and pump with volume meter got the quality awards in Liao Ning province. The pump for ship got the acceptance of the Register of Shipping of the People's Republic of China.

The Model HKZ reciprocating pump for ship, imported from KSB Corp. of West Germany has passed the acceptance test by both sides and shall be put on the market in large amount very soon.

Our factory insists on the principle of "Quality is first, consumer is supreme" serves the consumers wholeheartedly. Orders are welcome as well as co-operation.





本溪市京溪聯營汽車改裝廠歷史悠久、技術力量雄厚，重視產品質量，講究信譽。生產的JX 121型輕型載貨汽車系列產品，暢銷東北三省。

JX 121和JX 121A型單、雙排座輕型載貨汽車系用北汽BJ 121底盤改裝的，裝配調整質量良好，各項基本性能達到設計要求，經過3500公里道路試驗，可靠性良好。根據中汽公司Q 1105~84（汽車工業成品質量評定辦法）綜合評定，達到一等品水平，這種車型是理想的小型運輸工具。

JX 212輕型越野汽車，車身為封閉式金屬結構，內飾整潔，乘坐舒適，安全可靠。是企業機關團體理想的交通工具。

遼寧省本溪市京溪聯營汽車改裝廠

廠址：本溪市大峪

電話：82264

電掛：0208

JingXi Joint Automobile Refitting Factory has a long history and is rich in technics. It has paid more attention to quality and reputation. The series products of light truck, Model JX 121, has been already sold well in the three northeast provinces of China.

The light truck of single or double row of seat is refitted with chassis of Model BJ 121 made in Beijing Automobile Factory. The quality of assembly and adjustment is high and various principal functions have met the design requirement. The 3500 km. road test proves its reliability. According to the comprehensive examination based on Q1 105 84 (The Evaluating Method of Product Quality in Automobile Industry of China), it reaches the first-class products standard. This truck is an ideal small transportation tool.

With an enclosed metal structure and neat decoration, the light cross-country vehicle, Model JX 212 is a very comfortable and safe means of transport for enterprises and organizations. Jingxi Joint Automobile Refitting Factory, Benxi, Liao Ning Province

Address: Da Yu, Benxi

Tel: 82264

Cable: 0208



本溪市鉄城鋼管廠生產的山城牌低壓流體輸送用焊接鋼管，一九八四年榮獲冶金部優質產品稱號。
規格 1 / 2 "— 4 "

鉄城牌冷軋帶鋼：

規格：寬200mm以下，厚0.5—2.0mm

鉄城牌21類 210744號

山城牌21類 143214號

本溪市鉄城鋼管廠

廠址：本溪市明山區向陽街

電話：82052

廠長：姜永符

The Welded Steel Pipe "Mountain City" brand for low pressure liquid made in Tie Cheng Steel Pipe Factory, won the prize of quality products of the Ministry of Metallurgical Industry in 1984. The specification are 1/2"- 4 "

The "Iron City" brand coldrolling strip steel.

Specification: width less than 200mm, thickness 0.5--2.0mm

"Iron City" brand Category 21, No. 210744

"Mountain City" brand Category 21, No. 143214

Benxi Tiecheng Steel Pipe Factory

Address: Xiang Yang Street

Ming Shan District

Benxi

Tel: 82052

Factory Director: Jiang Yong-fu

