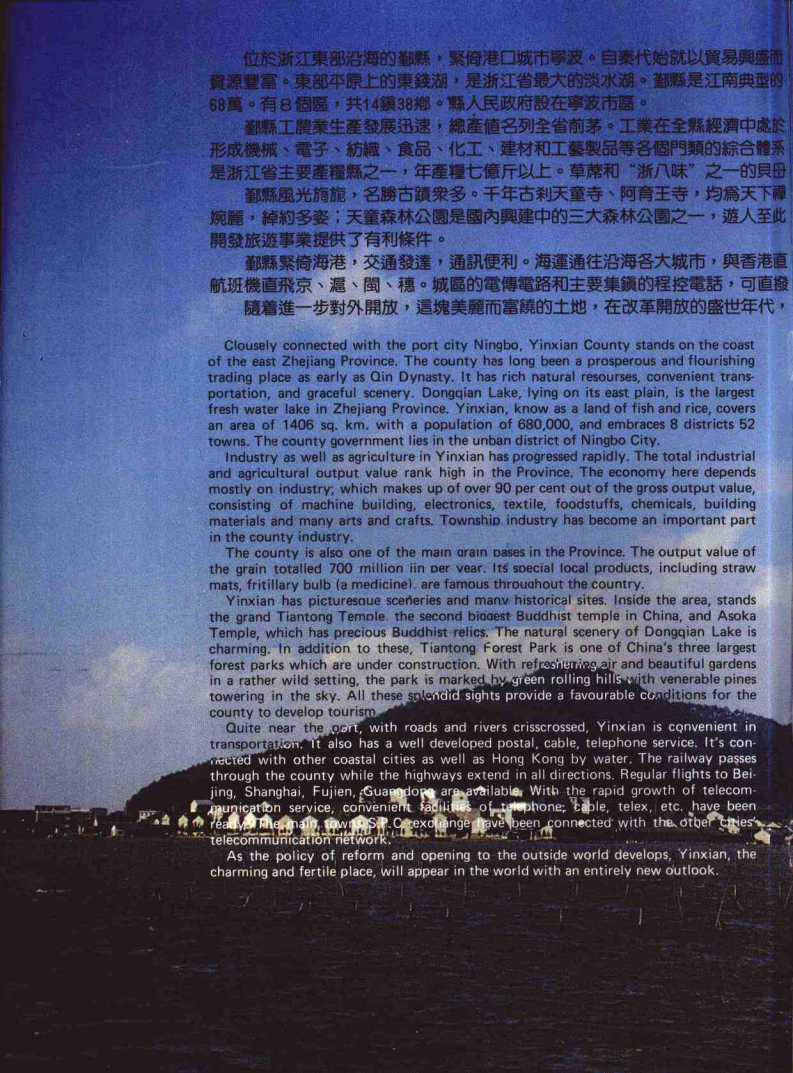




鄞縣

Yinxian





位於浙江東部沿海的鄞縣，緊倚港口城市寧波。自秦代始就以貿易興盛而資源豐富。東部平原上的東錢湖，是浙江省最大的淡水湖。鄞縣是江南典型的68萬。有8個區，共14鎮38鄉。縣人民政府設在寧波市區。

鄞縣工農業生產發展迅速，總產值名列全省前茅。工業在全縣經濟中處於形成機械、電子、紡織、食品、化工、建材和工藝製品等各個門類的綜合體系是浙江省主要產糧縣之一，年產糧七億斤以上。草蓆和“浙八味”之一的貝母。

鄞縣風光旖旎，名勝古蹟眾多。千年古剎天童寺、阿育王寺，均為天下所婉麗，綽約多姿；天童森林公園是國內興建中的三大森林公園之一，遊人至此開發旅遊事業提供了有利條件。

鄞縣緊倚海港，交通發達，通訊便利。海運通往沿海各大城市，與香港直航班機直飛京、滬、閩、穗。城區的電傳電路和主要集鎮的程控電話，可直接隨着進一步對外開放，這塊美麗而富饒的土地，在改革開放的盛世年代，

Closely connected with the port city Ningbo, Yinxian County stands on the coast of the east Zhejiang Province. The county has long been a prosperous and flourishing trading place as early as Qin Dynasty. It has rich natural resources, convenient transportation, and graceful scenery. Dongqian Lake, lying on its east plain, is the largest fresh water lake in Zhejiang Province. Yinxian, know as a land of fish and rice, covers an area of 1406 sq. km, with a population of 680,000, and embraces 8 districts 52 towns. The county government lies in the urban district of Ningbo City.

Industry as well as agriculture in Yinxian has progressed rapidly. The total industrial and agricultural output value rank high in the Province. The economy here depends mostly on industry, which makes up of over 90 per cent out of the gross output value, consisting of machine building, electronics, textile, foodstuffs, chemicals, building materials and many arts and crafts. Township industry has become an important part in the county industry.

The county is also one of the main grain bases in the Province. The output value of the grain totalled 700 million iin per year. Its special local products, including straw mats, fritillary bulb (a medicine), are famous throughout the country.

Yinxian has picturesque sceneries and many historical sites. Inside the area, stands the grand Tiantong Temple, the second biggest Buddhist temple in China, and Asoka Temple, which has precious Buddhist relics. The natural scenery of Dongqian Lake is charming. In addition to these, Tiantong Forest Park is one of China's three largest forest parks which are under construction. With refreshing air and beautiful gardens in a rather wild setting, the park is marked by green rolling hills with venerable pines towering in the sky. All these splendid sights provide a favourable conditions for the county to develop tourism.

Quite near the port, with roads and rivers crisscrossed, Yinxian is convenient in transportation. It also has a well developed postal, cable, telephone service. It's connected with other coastal cities as well as Hong Kong by water. The railway passes through the county while the highways extend in all directions. Regular flights to Beijing, Shanghai, Fujian, Guangdong are available. With the rapid growth of telecommunication service, convenient facilities of telephone, cable, telex, etc. have been realized. The main town S.P.C. exchange have been connected with the other cities' telecommunication network.

As the policy of reform and opening to the outside world develops, Yinxian, the charming and fertile place, will appear in the world with an entirely new outlook.

聞名。境內山青水秀，河網密佈，阡陌縱橫，
魚米之鄉。全縣總面積1406平方公里，人口

主導地位，佔總產值的90%以上。並已逐步
，且以鄉鎮企業為主幹。農業以水稻為主，
是名聞全國的特產。

宗名利。建築恢宏，為國內罕見。錢湖端雅
，攬勝探幽，情趣盎然。鐘靈毓秀的鄞縣為

接通航。鐵路橫貫縣境，公路四通八達，民
全國各大城市。

將迸發出更加絢麗的光彩。



鄞縣的明珠——東錢湖

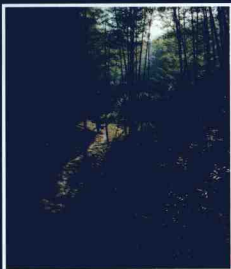
Dongqianhu lake - a pearl in Yin County

自然環境

Natural Circumstances

鄞縣位於東經121°8'至121°53'，北緯29°37'至29°57'。版圖如一隻飛舞的彩蝶。鄞縣屬亞熱帶季風氣候，溫和濕潤，雨量充沛。全年平均氣溫為16°C，宜栽水稻及亞熱帶經濟作物。全縣有大嵩、錢湖、橫溪、邱隘、姜山、望春、鄞江、樟水8個區，52個鄉鎮。境內東部瀕海，西部為四明山余脈，中部是水網縱橫的大平原。甬江、奉化江、余姚江越境入海，自然環境堪稱山靈水靈。

Yinxian county is located at 2°37' 29°57'N and 121°8'-121°53' E on the map. The weather here is pleasant all the year round. With a sub-tropical monsoon climate, Yinxian is mild, rainy, and moist. Its year-round average temperature is 16°C, which is in favor of the growth of cereal and sub-tropical economic crops. It has 8 districts, named Dasong, Qianhu, Hangxi, Quai, Jiangshan, Wangchun, Yinjiang, and Zhuangshui, and 52 towns under its jurisdiction. It also has a favourable geographical location with sea in the east, Shiming mountain in the west, plain with water network in the middle, and the Rivers of Yongjiang, Fenghua and Yuyao running across the county to the sea. All these sights make Yinxian a charming place.



修竹婆娑

Handsome bamboo dance in the breeze



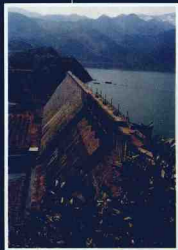
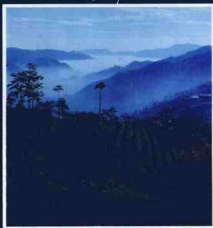
水鄉春色

A region of rivers and lakes with spring scenes



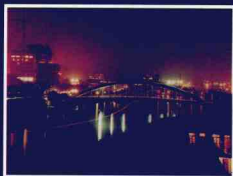
四明雲海

Cloud sea in Siming



蛟口雄姿

The grand view of Jiaokou



寧波城夜景

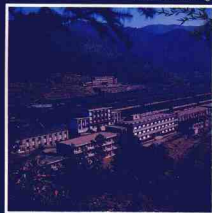
The night view of Ningbo City



古塔擲雲

An ancient cloud-kissing pagoda

翠巒新村
New Cuicao village



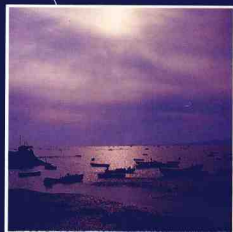
南塘夕映

Evening glow in Nantong River



錢湖鳥瞰

A bird's-eye view of Qianhu Lake



海濱朝霞

Rosy clouds of dawn over the seashore

歷史文化

Ancient Culture

新石器時代，在鄞縣這塊土地上已創造了燦爛的先民文化。商周的細石器和青銅器，記錄了當年開拓者的艱辛歷程。秦郡縣天下，這裡設鄞、鄞、句章三縣，已有“海人貿易於此”。六朝起開發程度深化，唐建明州，即為我國主要的對日貿易口岸。宋置市舶，鄞縣進一步加入了世界性貿易循環，是海上陶瓷之路的東方起點之一。明清間貿易中興，商賈輻湊，名聞天下，五口開埠，首通風氣。五千年文明如縷不絕，古鄞今風，新曲翻歌。



詳盡記載鄞縣歷史的《鄞縣通志》
"Comprehensive Annals of Yinxian County" which
recorded in detail the history of Yinxian County



漢人獸五管瓶

Five tube bottle with Han Dynasty people and animal

Yinxian has a long history about 5,000 years. It became civilized with ancient culture in the Neolithic age. The finding of microlith and bronzes ware in the Shang and Zhou Dynasties shows the hardship of early pioneers of that time. After China was unified in the Qin Dynasty, there had emerged three counties — Yin, Mao, and Gouzhang counties. Thus Yinxian became a trading port, which developed into a trade center since the Eastern Jin Dynasty. In the Tang Dynasty, Yinxian was once the capital of the Mingzhou prefecture (Ningbo) and became one of the important port for foreign trade, especially to Japan. Up to the Song Dynasty, with the setting of Shipo (an office of foreign trade), Yinxian entirely entered the international trade circulation, and was one of the starting point of the "porcelain shipping line" in the East. It was a prosperous and flourishing trade center with merchants and carriages during the Ming and Qing dynasties. In 1842, it was chosen as one of the five trading ports to be opened to the West.



在鄆西出土的石鉞
Stone battle-axe unearthed
in west Yin County



商周時期的石犁
Stone plough dates back to
Shang and Zhou Dynasty



戰國時期的銅鉞
Bronze battle-axe dates back
to the Warring States



五代、北宋的青瓷器划花碗、盏托等
Celadon bowl with drawing flowers and celadon tray etc.
dates back to northern Song Dynasty

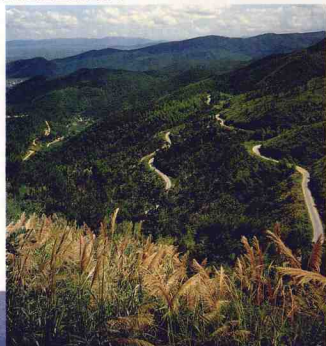


建於唐代的古水利工程——它山堰
Ta Shang weir — an ancient irrigation
works built in Tong Dynasty

交通

Communications

鄞縣交通“鐵、公、水”並進，陸、海、空俱全。北侖鐵路橫貫縣境，寧波鐵路東站鄞縣營運處專承貨運，年貨運能力30萬噸。公路以寧波市為中心，輻射到全縣每個鄉村，境內公路密度高於全省平均水平的一倍以上。海運借寧波港之便，有定期班輪開赴上海、舟山及沿海各地，並闢有至香港、日本、朝鮮定期航班。民用航空寧波機場已開闢至北京、上海、杭州、廣州、廈門、武漢的定期班機。寧波櫟社國際二級機場就座落在鄞縣境內。



蜿蜒的盤山公路

A highway spirals along the hills

Combining water, land and airway with each other, the communication is pretty convenient in Yinxian, Beilun railway runs across the area. Yinxian Spot of Ningbo East Railway Station specializes in cargo transportation, with transportation capacity of 300 thousand tons annually. The highways have emerged in a figure of radiation from Ningbo to countryside. The highway density in Yinxian is as twice big as that of the province's average. Making advantage from Ningbo port, lines for sea transportation can lead to Shanghai, Zhoushan and other ports, even more is bound for Hong Kong, Japan, Korea. In other hand, passenger plane flight is available for Beijing, Shanghai, Hangzhou, Xiameng, Wuhan. Ningbo Lishe international second-class airport locats in Yinxian county.



通往旅遊區的寧穿公路

Ningchuan highway leads to tourist attraction





與北京等地通航的寧波機場
Ningbo airport which connects
Beijing and other places.

興建中的栲社國際二級機場
Lishe airport, the B class airport in international
Standard, is under construction



北甬鐵路從縣境穿過
Beilun railway crosses the county area



寧波港是本縣海運的主要港口
Ningbo port is the main part for the county's ocean shipping



電力從這裡集散

Electric Power Station — transforming and distributing



水力發電機組

Hydroelectric generating set

鄞縣供電能力達10萬千瓦以上，年供電量4億多度，名列全省前4名。水力資源豐富，已有小水電站21座，裝機容量1萬多千瓦，年發電量4千多萬度。

全縣郵電通訊便捷，境內所有鄉鎮和自然村全部通郵。形成以寧波為中心的郵電網絡。電話機百人擁有率高於全國平均數一倍以上，還裝有電傳電路數條。城區及主要集鎮的電話均已自動程控，可直撥全國各大城市。

電力 · 郵電

Power Supply ● Postal and Telecommunications Service



程控電話機房
Program control telephone room



繁忙的鄉郵業務
Busy post service in the country

Above 100 thousand million watt of electric can be provided in Yinxian, which rank forth in the province. It has the electric-providing capacity of 40 million kilowatt per year. There is plentiful resource of waterpower, with 21 small waterpower stations. They can supply above 4 million kilowatt electric per year.

Regard Ningbo as the center of the network of the post and telecommunication, mails can be sent at every town and village. The rate of telephone-owning (per 100 persons) is above twice of that of the country's average number. Some telex circuits have been installed. Telephone in urban and main towns are automatic-controlled, and can phone directly to every big city in the country.





工業

Industry

鄞縣工業起步在本世紀六十年代中期，而其迅速崛起則在八十年代初期鄉鎮工業異軍突起之時。現有24餘萬從業大軍，年創工業產值和稅利均在全省前列。

工業以輕紡、服裝、機械、電子、五金、電器、塑料、食品、建材九大類為主業。鄉鎮工業後來居上成為全縣工業的主體，產值和利稅比重均佔85%以上。由於積極發展與大工業和大專院校、科研單位橫向聯營，提高了產品檔次，現有聯營企業 700 餘家，70多個產品獲部優、省優。產品注重內外貿並舉，陸續打入國際市場，近年工業品出口值名列全省前茅。

Yinxian's modern industry started in the mid 1960s. Its rapid development is in the early 1980s as the township industry blooms. Now it has 240,000 workers, its annual industrial output value and profit rank high in the Province. The county has established a local industrial system consisting of textile, garment, machine building, electronics, hardware, electric appliances, plastics, foodstuffs, building materials. What's more, the township industry has developed as mainstay industry, its output value and profit occupy 85 per cent in the industry. In recent years, the county has adopted the new measure of "interlinking factory with institute and combining research with products", resulting in the new development of top quality industrial products. There are 700 co-operated enterprises, over 70 products have been awarded the great achievement certificates both by the state and the province. Some products has penetrated international market.



造船業初具規模

Shipbuilding is able to perform the basic functions

五分天下有其一，機械行業人才濟濟，門類齊全。從汽車、機床工具、礦山機械、通用機械到儀表儀表、家用電器、基礎件元器件，應有盡有。產品先進，質量保證。

There are a number of qualified engineers and technicians in the Machine Building Industry. Many kinds of products can be made here, from automobile, mechanical tools, mining machinery, universal machinery to meter and instruments, electric household appliances, and basic instruments. All these products are advanced and of high quality.



包裝牌煤氣瓶質量符合部頒標準

The quality of Baoling Brand gas bottle conform to the standard issued by the concerned ministry



空壓機整裝待發

Packed air compressors for shipping



汽車製造業方興未艾

Automobile manufacturing is in the ascendant



定時器生產流水線

A production line of timing unit



集成電路元件接受嚴格檢驗

Integrated component circuit is checked strictly

電子工業以精尖產品黑陶瓷集成電路元件為代表，猶如新星躍空，起勢不凡。年產值已超億元。電機產品更似羣星燦爛，佔工業總比重十分之一。滬江牌吊扇、富麗牌鴻運扇、系列微電機等一批名優產品更加奪目，譽滿國內外。

The Electronic Industry develops quickly with an annual output value over 1 billion yuan (RMB). Black ceramic integrated circuit component is its representative product. Various kinds of electric products accounted for one tenth in industry. Such products as Hujiang Brand Electric hang fan, Fuli Brand box fan, series micro-motors and others, enjoy high prestige both at home and abroad.

專產各類微型特型電機

Specializing in production of different kinds of miniature motor





寧波化工二廠的黃磷榮獲省級優質產品

The phosphor produced by Ningbo Second Chemical Plant [was awarded the honourable title] of excellent product in Zhejiang Province

鄞縣的化工除生產化肥、農藥外，尤以塑料業見長。膠丸生產佔全國產量的四分之三。

Besides its advantage in producing chemical fertilizer and pesticide, chemical industry in Yin County specializes in plastics production. And the output of plastic particle accounts for three fourths of the total output in China.



化工廠車間一角

A part of workshop in the Chemical Plant



新型的化工技術隊伍田壯成長

New chemical technicians are reaching maturity



鄞縣的膠丸生產佔全國產量的四分之三

The output of plastics particle in Yin County accounts for three fourth of the total volume of production in China

膠丸車間一角

A part of plastics particle workshop





化纖紡織

Spinning and weaving of synthetic fibre



針織

Knitting



地毯

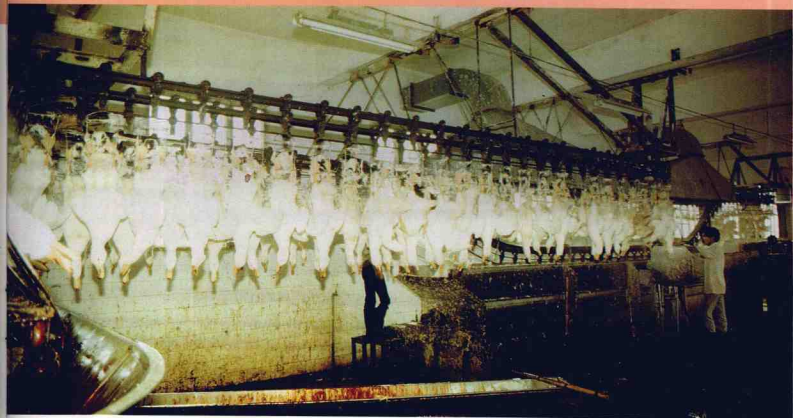
Carpets

數百家紡織服裝企業星佈全縣各地，精湛的技藝加現代化設備，使產品聲譽日盛，有近20種產品榮獲部優、省優。北侖牌襯衫、“吉爾美”西裝、“天壽”中山裝、牦牛牌黑炭襯更是名聞遐邇。

Hundreds of garment factories scatter all over the county. They have enjoyed a good reputation for its exquisite workmanship and modern equipments. About 20 kinds of products have won the high quality prize by the state and the province. For example, Beifun Brand shirt, Jiermei Brand western-style clothes, Tianshou Brand chinese tunic suits and Maonu Brand interlacing are warmly welcomed among end-users.

毛紡

Wool spinning



源源出口的寧波凍鴨

Ningbo freezing ducks are exported continually

隨着人民生活的提高，食品工業在近年應運而起，年產值已逾億元。從糖果、糕餅、酒類、罐頭食品，到凍家禽、水產品，直到大宗的糧油加工、製茶、製鹽等，應有盡有。“明州”優質啤酒遠近聞名，寧波凍鴨、冰鮮泥鰍、對蝦、清汁爭等均遠銷國外。

Food Industry whose annual output value exceeds 1 billion yuan (RMB) came into being recent years as the people's life improved. The food enterprises are specialized in producing different kinds of products, from sweets, cakes, wines, canned-food to frozen poultry, aquatic products, food, tea, and salt. Among them, Mingzhou Brand high-grade beer is mostly welcomed near and far, while frozen Ningbo duck, iced loach, prawn, boiled bamboo shoots, etc. have a brisk market over the world.



頗受外僑青睞的梭子蟹

Swimming crabs find quite favour in foreign businessmen's eyes



年產3萬噸的浙東啤酒廠灌裝機

The filling and packing machine in East Zhejiang Brewery which produces thirty thousand tons of beer a year.