
**上海现代建筑设计集团
高层建筑和超高层建筑设计选录**

**Selected Projects of High-Rise Buildings
and Skyscrapers by SMAD**



CONTENTS

录

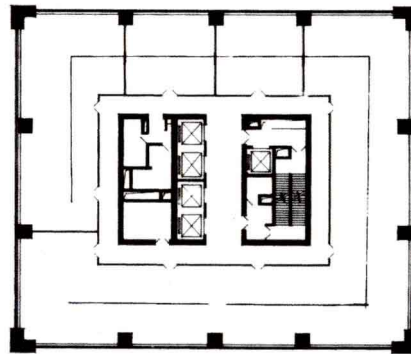
- 高层建筑和超高层建筑设计项目选录-----1
- 高层建筑和超高层建筑设计项目选录一览表---中文版-----101
- 高层建筑和超高层建筑设计项目选录一览表---英文版-----104

- SELECTED AND CURRENT PROJECTS OF HIGH-RISE BUILDINGS & SKYSCRAPERS BY SMAD-----1
- TABLE OF SELECTED AND CURRENT PROJECTS OF HIGH-RISE BUILDINGS & SKYSCRAPERS BY SMAD - in Chinese -----101
- TABLE OF SELECTED AND CURRENT PROJECTS OF HIGH-RISE BUILDINGS & SKYSCRAPERS BY SMAD - in English -----104



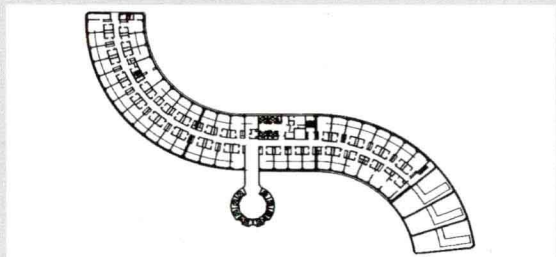
位于延安东路四川中路，高94.7米，地上29层，地下1层。总建筑面积30050平方米。1986年建成。本工程由华东建筑设计研究院设计。

Standing at the intersection of Yanan Road (E) and Sichuan Road, Union Building, 94.7 meters high, 29 stories above grade, 1 level underground, was built in 1986, with a total floor area of 30,050sqm . The project was designed by ECADI.



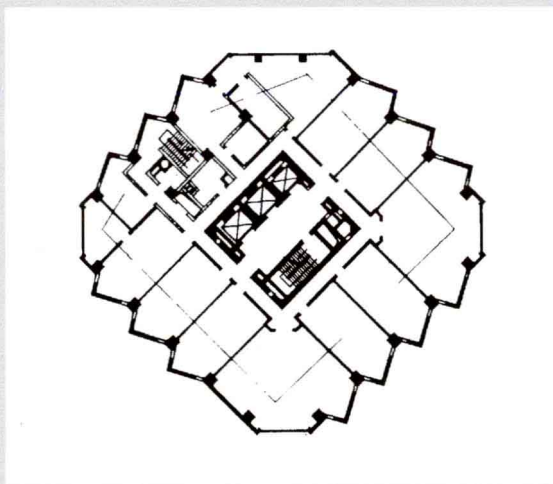
地处漕溪北路1200号，高82米，28层，总建筑面积97000平方米，拥有1236间（套）客房。系五星级宾馆。1986年建成。本工程获上海市优秀设计一等奖，被评为上海市八十年代十佳建筑。

本工程由香港王董建筑师事务所有限公司担任方案设计，华东建筑设计研究院担任初步设计与施工图设计。



Situated at 1200 Caoxi Road (N), Huating Hotel, 82m high, 28 stories, providing 1,236 suites , is a 5-star hotel completed in 1986 , with a total floor area of 97,000 sqm . The project was granted the First Award of Distinguished Design in Shanghai and One of the Ten Best Buildings of Shanghai in 1980's.

The scheme was presented by Wang Dong Architects & Associates (HK) Ltd . , The design development and construction document design were prepared by ECADI.



位于南京东路江西中路，高125米，27层，总建筑面积23000平方米。1988年建成。本工程获上海市优秀设计一等奖与上海市八十年代十佳建筑。本工程由华东建筑设计研究院设计。

Situated at the intersection of Nanjing Road and Jiangxi Road, East China Electric Power Administration Building, with a height of 125 meters, 27 stories and a total floor area of 23,000sqm, was completed in 1988. It was granted the First Award of Distinguished Design in Shanghai and one of the Ten Best Buildings in Shanghai in 1980's. The project was designed by ECADI.

华东电力大楼

East China Electric Power Administration Building 在线阅读购买: www.ertongbook.com

上海现代建筑设计集团

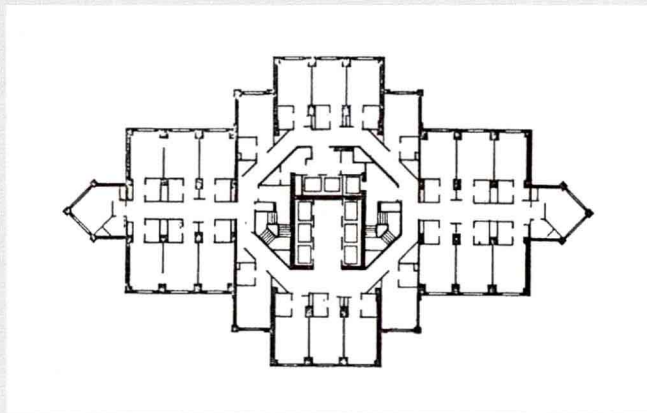
位于虹桥开发区，总建筑面积50000平方米，36层，高124米，系四星级宾馆，1989年建成。香港灼玑建筑师事务所设计，上海建筑设计研究院担任咨询顾问。

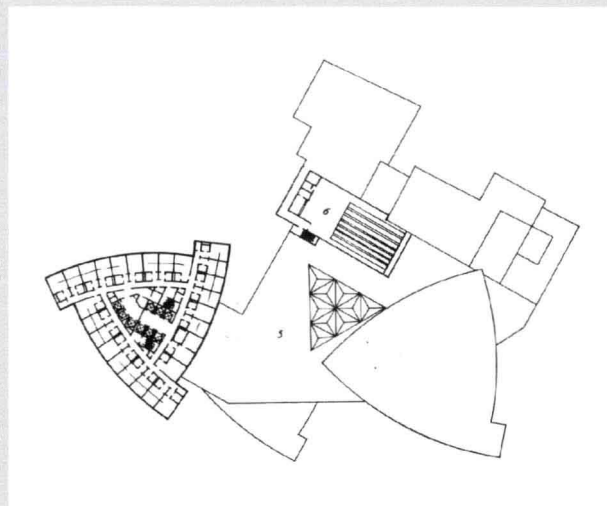
Located in Hongqiao Development Zone, Yangtze New World International is a 4-star rank hotel with 36 stories. It was designed by D. Heung & Associates Architects & Engineers and SIADR acted as a design consultant.

Height: 124m

Total floor area: 50,000sqm

Year of Completion: 1989



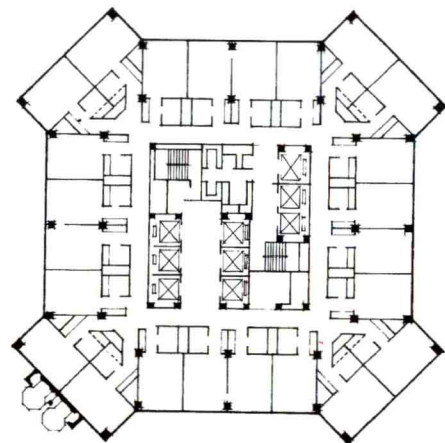


位于中山西路延安西路，高105米，22层，总建筑面积65000平方米。1990年建成。本工程获上海市优秀设计一等奖。本工程由华东建筑设计研究院设计。

Situated at the intersection of Zhongshan Road (W) and Yanan Road (W), Galaxy Hotel, 105m high, 22 stories, was completed in 1990, with a total floor area of 65,000sqm. It won the First Award of Distinguished Design in Shanghai. The project was designed by ECADI.



位于上海市区中心老锦江饭店东侧，是一座五星级宾馆。基地面积6800平方米，总建筑面积57300平方米，主楼地上43层，地下1层，总高153米。塔楼顶部设旋转餐厅。建筑造型以圆形轮廓与竖向线条结合，多角形塔身玻璃幕墙与铝板幕墙结合形成了建筑独特的风格。上海建筑设计研究院与香港王董国际有限公司联合设计，1990年建成。



Located on the east side of Jinjiang Hotel, which is in the downtown of Shanghai, Jinjiang Tower is a 5-star rank hotel. There is a revolving restaurant on the top of the tower. The whole building appearance integrates the circular outline with the vertical line and the curtain wall system with aluminum plate on the polygonal body of the tower to form the unique style of the building. It is co-designed by Hong Kong Wong & Tung International Ltd. (Planners, Architects, Engineers) and SIADR.

Site area: 6,800sqm

Total floor area : 57,300sqm

Total height : 153m with 43 stories above grade and one below grade

Year of Completion : 1990

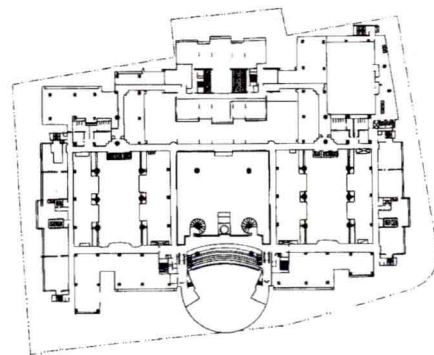


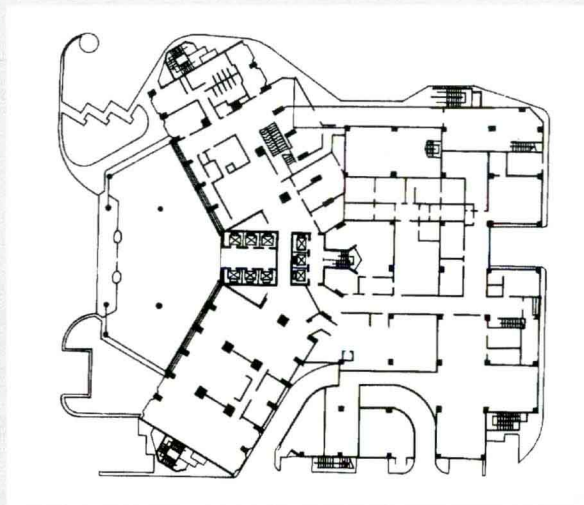
Situated 1376 Nanjing Road (W) , the main tower of Shanghai Center is 164.8m high, 50 stories, was completed in 1990, with a total floor area of 186,000sqm. It is a complex building combining the functions of a hotel, offices and entertainment . The project won the Award of Shanghai Distinguished Cooperative Design in Shanghai.

Portman & Associates, U.S.A. was the designer of the project, and ECADI acted as the local consultant in it.

地处南京西路1376号，主楼高164.8米，50层，建筑总面积186000平方米，集商住、办公、娱乐为一体，1990年建成。本工程获上海市境内外合作优秀设计奖。

本工程由美国波特曼建筑事务所设计，华东建筑设计研究院担任咨询顾问。





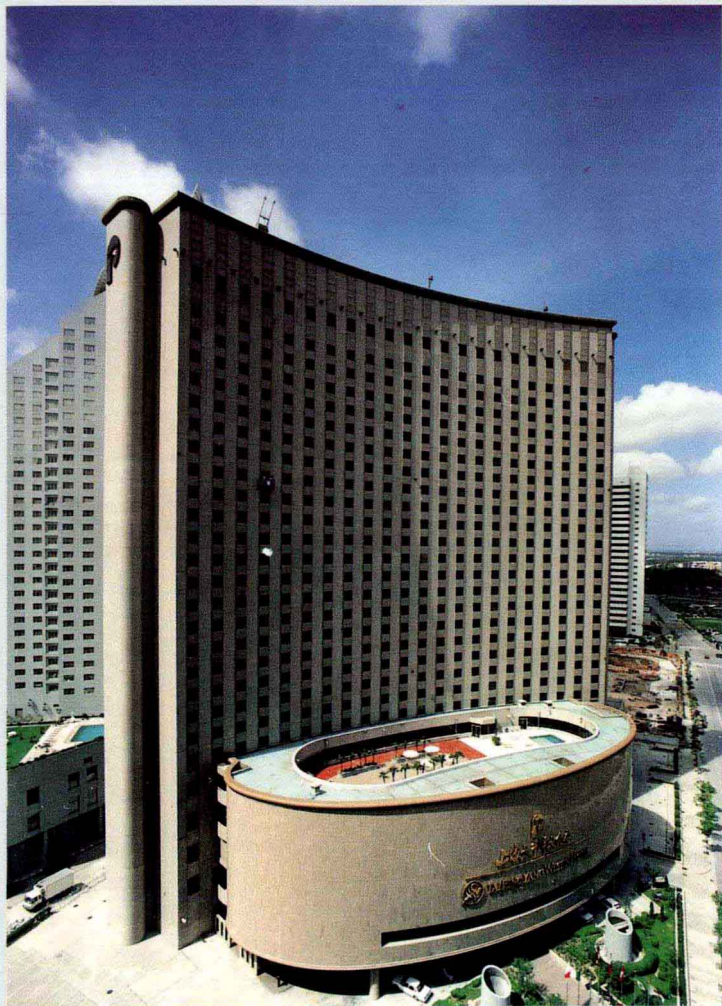
位于南京西路陕西路，高94.6米，28层，建筑总面积58000平方米，是五星级宾馆。1990年建成。新加坡赵子安联合建筑事务所设计，上海建筑设计研究院担任咨询顾问。

Located at Nanjing Road (W) and Shanxi Road, Jin Cang Mandarin is a 4-star hotel with 28-storey. It was designed by Chao Tse Ann & Partners, Architects & Designers and SIADR acted as a design consultant.

Height : 94.6m

Total floor area : 58,000sqm

Year of Completion : 1990



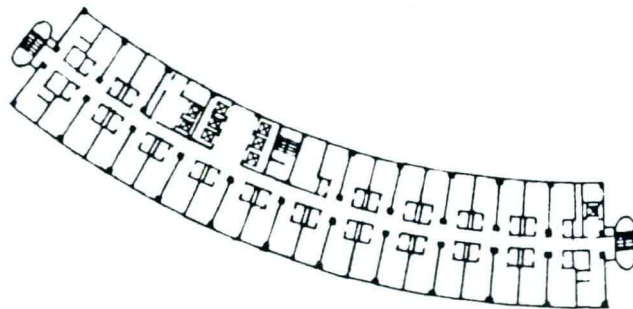
位于虹桥开发区，27层，高100.5米，总建筑面积67000平方米。1990年建成。日本青木建设株式会社设计，上海建筑设计研究院担任咨询顾问。

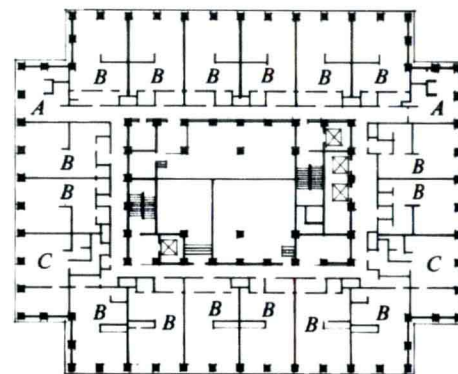
Located in Hongqiao Development Zone , The Westin Tai Ping Yang was designed by AOKI Corporation , Japan and SIADR acted as a design consultant.

Height : 100.5m , 27 stories

Total floor area : 67,000sqm

Year of Completion : 1990





位于虹桥开发区，总建筑面积90000平方米，35层，高103.4米，日本设计事务所设计，上海建筑设计研究院担任咨询顾问。

Located in the Hongqiao Development Zone, Shanghai International Trade Center was designed by Nihon Architects, Engineers & Consultants Inc and SIADR acted as a design consultant.

Height: 103.4 m , 35 stories

Total floor area: 90,000sqm



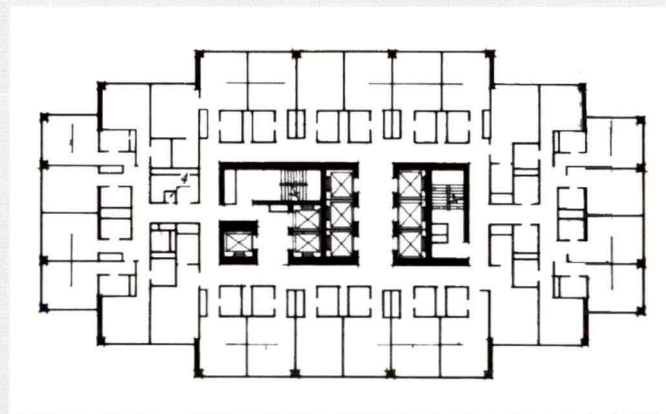
位于延安路华山路，总建筑面积58000平方米，28层，高94.6米，系四星级宾馆，1990年建成。新加坡赵子安联合建筑设计事务所设计，上海建筑设计研究院担任咨询顾问。

Located on Yanan Road and Huashan Road, Shanghai International Equatorial Hotel is a 4-star hotel with 28 stories. It was designed by Chao Tse Ann & Partners. Architects & Designers and SIADR acted as the design consultant.

Height : 94.6m

Total floor area : 58,000sqm

Year of Completion : 1990



1990

国际贵都大酒店

Shanghai International Equatorial Hotel

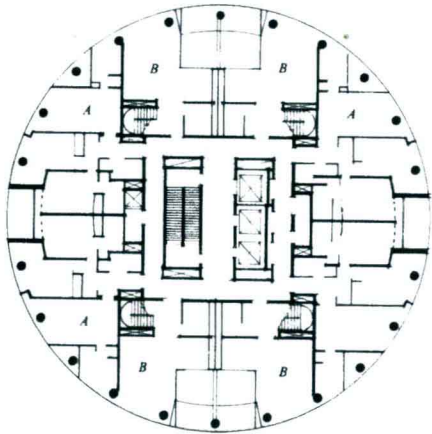
上海现代建筑设计集团

位于延安西路娄山关路，36层，高100米，总建筑面积360000平方米，系综合性高级公寓，美国Ed2国际公司扩初设计，上海建筑设计研究院施工图设计。

Located on Yanan Road (W) and Loushanguan Road , Golden Bridge Mansion is an exclusive mix-used building with 36 stories . The design development was prepared by ED2 international Design (USA) and the construction drawings were prepared by SIADR .

Height : 100m

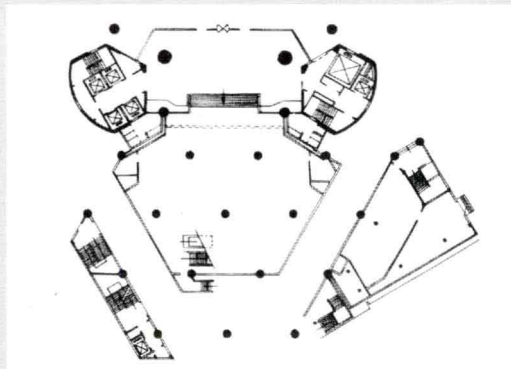
Total floor area : 36,000sqm





座落于南京西路繁华商业街上，主要为广播电视技术业务和国际新闻交流会议，办公用房等。1994年建成，高128米，26层，总建筑面积30000平方米。建筑设计以城市环境与功能要求为出发点，以室内大空间构想来适应广播电视技术迅速发展的需要。主楼采用角筒大跨度预应力梁的新型结构体系，赋予建筑以个性鲜明的外部形象和灵活多变的室内空间。本工程获上海市优秀设计一等奖。本工程由华东建筑设计研究院设计。

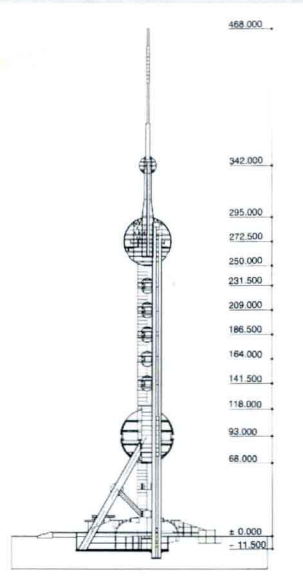
Situated on the busiest street - Nanjing Road (w), Shanghai Broadcast & TV International News Exchange Center is used for radio and television transmission, news exchange and administrative offices, etc.. It was built in 1994, with a height of 128m, 26 stories and a total floor area of 30,000 sqm. Taking the urban environment and function requirement as its origin, the architectural design stresses on a concept of a large space so as to meet the need of a rapid development of radio and television technology. The main building in a triangular form is constructed in a new structural system of three reinforced concrete



cores with large span pre-stressed beams, thus giving the building an obvious personality of the facades and a large flexible interior space. It won the First Award of Distinguished Design in Shanghai issued by the Shanghai Municipality. The project was designed by ECADI.



位于浦东黄浦江畔陆家嘴，与外滩一江之隔，高468米，总建筑面积达70000平方米，集旅游、观光、娱乐、购物、餐饮、广播电视发射及空中旅馆、太空舱等多功能为一体的大型公共建筑。于1995年5月1日建成剪彩，现已成为上海新的城市标志，在国际国内享有很高的声誉。本工程获中国建筑界最高奖，即由中国建筑学会颁发“建筑创作奖”及上海市优秀设计一等奖，还被评为九十年代上海十大新景观。本工程由华东建筑设计研究院设计。



The Tower, 468m high, is situated in Pudong Lujiazui Trade & Finance Development Zone, facing the well-known Bund on the west bank of Huangpu River. The total floor area of the Tower is about 70,000 sqm. It is a large public complex, which combines different functions of TV transmission, tourism, sightseeing, entertainment, shopping, restaurants, a sky hotel and a simulated space capsule. Completed on May 1st, 1995, the Tower has become a new landmark of Shanghai City, and enjoys high reputation at home and abroad. The design of the project was granted the top award in the Chinese architectural design circle-Architectural Creation Award issued by the Chinese National Society of Architecture, the First Award of Distinguished Design in Shanghai and One of the Ten Scenic Spots of Shanghai in 1990's. The project was designed by ECADI.

地处曲阳路800号，由商务大厦与万国商城组合成建筑群。商务大厦高174.5米，40层，万国商城长183米，宽54米，高52米，总建筑面积达150000平方米。1995年建成。本工程获1995年上海市商业建筑最佳形象奖。本工程由华东建筑设计研究院设计。

Located at No.800, QuYang Road, Shanghai Trade Center is composed of Trade Building and Universal Commercial Building. Trade Building, 174.5m high, is a 40-storied building, while Universal Commercial Building is 183m long, 54 meters wide and 52 meters high. Completed in 1995, the complex building was granted the Award of the Best Image of Commercial Building in Shanghai. The project was designed by ECADI.

