

LOG ART

CHEN

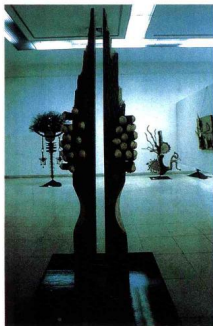
BAIQIU

原木艺术

陈白秋

《道极》系列

THE SERIES OF TAO JI



大 思想家老子认为“道”是宇宙中最原本实存的东西，“道”原本是“无”的状态，是我们通常什么也感觉不

到的状态，而后演变为“有”的状态；又由“有”的状态

演变为万物。

Lao zi, regarded "Tao" is the most essential mat-

ter in the universe. Everthing in this world is from

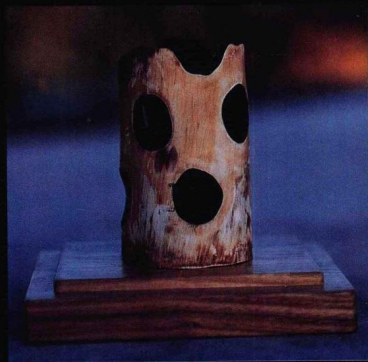
"Tao". Originally "Tao" is a state of nothing. It

evolves into the state of "existence", witch is also

called "Qi". "Qi" could e divided into "Yin" and

"Yang". When they combine with each other, every-

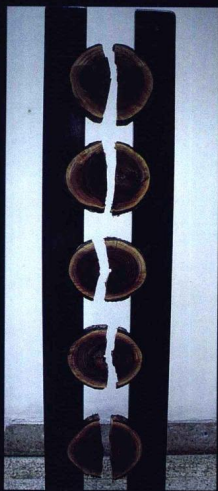
thing on the earth is produced.

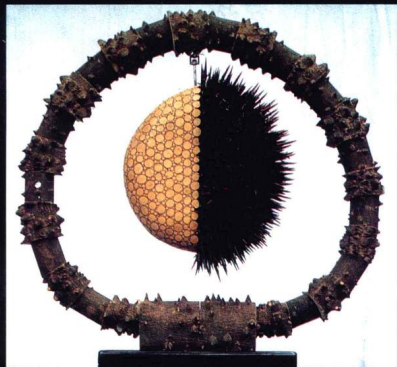


“这些东西，与其说是我的作品，还不如说是我赤裸而失生的灵魂”

"Such creatures, which would be rather called as my naked
and semi-raw soul than watched as my works"

原木艺术
LOG ART



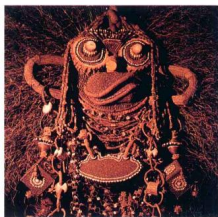


原木艺术
LOG ART

此为试读, 需要完整PDF请访问: www.ertor.com

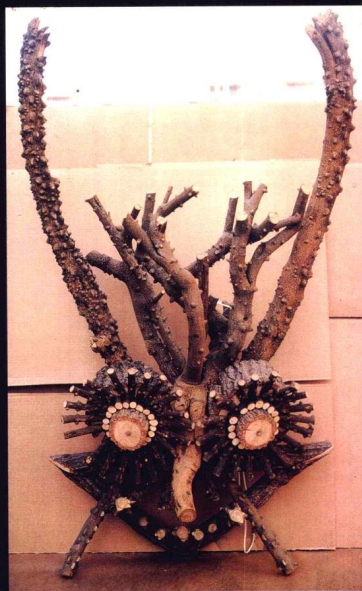
《神面》系列

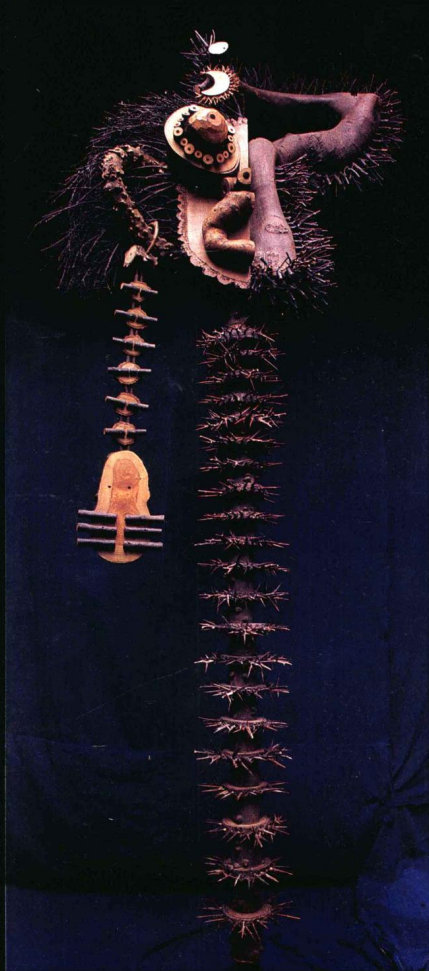
THE SERIES OF GOD FACE



通 过外在的神面造型表现一种贵州地方文化中的巫蛮，神秘、粗犷和由于大山的与世隔绝而内心渴求交流的原初生命的本能欲望。

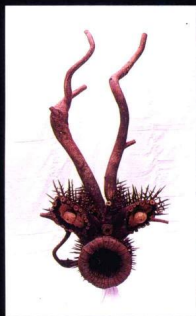
This series is to reflect the wilderness and mystery of the primitive culture in Guizhou, where the mountain cut the area off from other parts of the world. People there have a strong instinctive desire to change and make exchanges with outer world. On the whole, you could find that these works have close links with the local culture of Guizhou. But in detailed shapes, you can never find even one resemblance to them in the area.

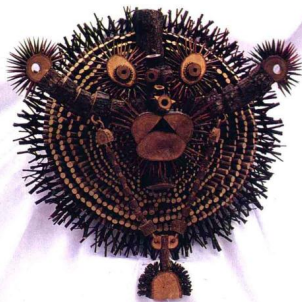
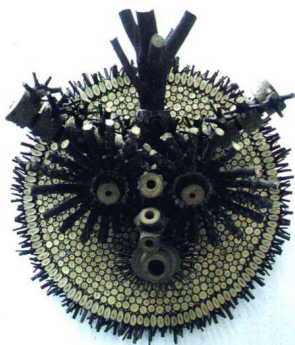
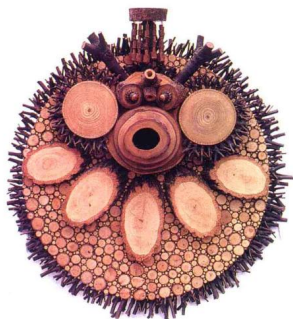






原木艺术
LOG ART

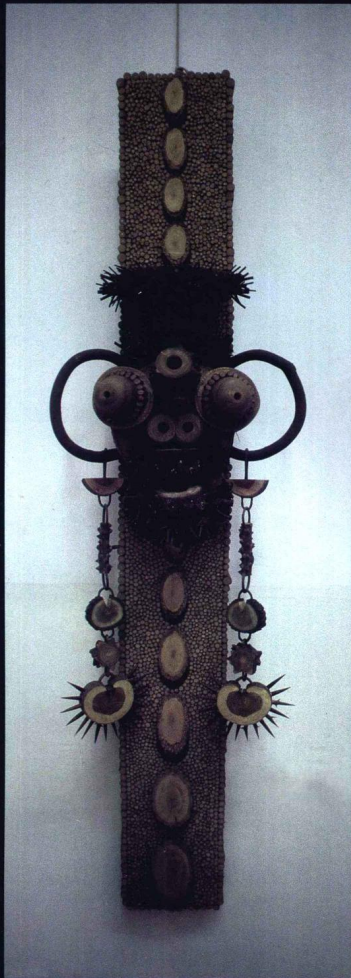




原木艺术
LOG ART



此为试读, 需要完整PDF请访问: www.ertor.com



原木艺术
LOG ART

ВНИИ

СНН

ГОС АВТ