

# JWDA

建筑专辑



au CHINA

建筑与都市·中文版·别册

## 建筑与都市051·别册

### JWDA骏地设计

《建筑与都市》中文版编辑部 编

主 编：阮海洪  
执行主编：王 娜  
责任监印：秦 英  
市场总监：付 力

出版发行：华中科技大学出版社（中国·武汉）  
地址：武汉市武昌珞瑜路1037号（邮编：430074）  
印刷：上海当纳利印刷有限公司

#### 《建筑与都市》中文版编辑部

电话：022-84519530

传真：022-84519530

Email: auchina@126.com

QQ: 2382672070

豆瓣小组：<http://www.douban.com/group/auc>

新浪微博：<http://weibo.com/auc2010>



微信：AUC建筑与都市

微信扫描二维码  
获取更多资讯

策 划：北京佰林时代文化传媒有限公司  
责任编辑：陈火焰  
电 话：010-68877841  
手 机：13810848972

公司简介 / Company Profile 1

富阳富春山水社区城市设计 / Fuyang Urban Design Plan 2

张江中区城市设计 / Zhangjiang Middle District Urban Design Plan 4

上海张江集电港 2-4 地块商业中心 / Zhangjiang IC Park Parcel 2-4  
Mixed Use Development 5

南边海三亚渔人湾 / Zhongtian Group South China Sea Project 6

丽江综合旅游地产项目 / Lijiang Mountainview Resort & Hotel  
Development Plan 7

大连红旗谷高尔夫社区 / Dalian Red Flag Valley Golf Community 8

海南龙沐湾国际旅游度假区 / Hainan Longmu Bay Resort 10

英迪格酒店 / Hotel Indigo 12

圣地亚哥希尔顿会议中心酒店 / San Diego Hilton Bayfront Convention  
Center Hotel 13

德尔玛 LAuberge 酒店 / Del Mar LAuberge Hotel 14

金茂上海凯悦酒店 / Jinmao Chongming Hyatt Hotel 15

上海张江银行卡产业园孵化中心一期 / Zhangjiang Bank Card  
Industrial Park BPO Center 16

广州萝岗绿地中央广场 / Guangzhou Greenland Luogang Mixed Use  
Center 17

圣地亚哥帆船会议中心 / San Diego Convention Center Sails  
Pavilion 18

上海张江莲花创意中心 / Zhangjiang Lotus Creative Center 20

工商银行上海世纪金融大厦 / ICBC Shanghai Branch Finance  
Building 22

工商银行上海分行外滩营业部 / ICBC Shanghai Branch of the  
Bund 23

中国成都麓山经济办公室总部 / Chengdu Luh Headquaters 24

上海外滩黄浦湾 / Shanghai Huangpu Bay Bund House 26

上海万科翡翠别墅 / Shanghai Vanke's Firenze Villas 28

丽江金茂雪山语 / Lijiang Jinmao Snow Mountain 29

15 号商业地产项目 / 15<sup>th</sup> & Commercial 30

圣地亚哥社区大学区——北校区 / San Diego Community College  
District North City Campus 31

Cover: Hotel Indigo.



# Company Profile

## 公司简介

JWDA<sup>SM</sup> (Joseph Wong Design Associates) has been at the forefront of global architectural and interior design since it was founded in 1977, in San Diego, California. For over thirty years, JWDA has planned and designed major buildings throughout California and in most major cities in Asia. Its expertise spans a full spectrum of professional design services in hospitality, commercial, residential, educational and recreational communities, as well as data centers, and urban complexes. JWDA's distinctive work is creative and elegant, complemented by its carefully developed knowledge of local history and context. Throughout the world, JWDA has created original, award-winning design solutions that are functional, innovative, and sustainable. With its talented resources of architects, designers, interior designers, landscape designers, planners, and research team members, JWDA has maintained its reputation for developing top quality, meticulously coordinated, and smoothly delivered projects to its global clients.

JWDA was first commissioned projects in Asia in 1993. The firm opened a branch office in Shanghai in 1997; it became JWDA's Shanghai Regional Headquarters in 2005. The Shenzhen office opened in 2007. With unsurpassed design services at the core of its mission, JWDA embarks on national and international expansion to better serve their clients throughout the United States, China, and the Pacific Rim.

JWDA has been recognized with numerous awards of excellence such as American Institute of Architects (AIA) Honor Awards, Design-Build Institute of America (DBIA) Honor Awards, and Gold Nugget Grand Awards. After entering the Asian market, the firm received a number of design excellence awards in Shanghai and nationwide, as well as prestigious recognition from national and international design competitions.

美国JWDA建筑设计事务所自1997年于美国加利福尼亚州成立以来，在酒店、办公、旅游度假社区、住宅社区、文教娱乐、数据中心及城市综合体等领域，提供了城市设计、区域规划设计、建筑设计、景观设计和室内设计等专业设计服务。JWDA始终坚持以各专业技术研究为核心，以可持续发展为基础，以创造高品质生活、工作空间及场所为宗旨，综合各专业技术特长，创造性地提供综合解决问题的设计方案。

JWDA于1993年进入中国市场，1997年设立中国上海代表处，2005年成立上海骏地建筑设计咨询有限公司，2007年成立深圳骏地建筑设计有限公司，2009年成立上海骏地装饰设计工程有限公司，2013年成立海南三亚办事处，不断为中国及亚太客户提供更优质和全面的设计服务。

JWDA的工作成就得到了多方面的认可，在美国多次荣获美国建筑师协会 (AIA)、美国规划协会 (APA)、美国园艺建筑协会 (ASLA)、美国室内设计协会 (ASID)、加利福尼亚州政府所授予的奖励与奖状。在中国，亦获得全国和上海的优秀设计奖。在美国及国际设计竞赛中，本公司的设计方案多次获得首奖及殊荣。

本公司系美国建筑师协会 (AIA) 成员，美国全国注册建筑师协会 (NCARB) 成员，城市规划协会 (ULI) 成员。公司的主持人黄安和 (Joseph Wong) 建筑师在美国柏克莱大学荣获建筑学士及建筑硕士学位，并获得哈佛大学设计研究院硕士学位，曾任哈佛大学设计研究院校友会主席团成员。黄安和先生历任美国圣地亚哥城市规划委员会成员 (1991—1994)，2003年推选为美国建筑师协会院士 (FAIA)。2013年荣任加州柏克莱大学环境设计学院院长咨询委员。



# Fuyang Urban Design Plan

富阳富春山水社区城市设计



Location	Fuyang, China
Area	57 hectares
Client	Zhongda Property Group
Awards	2009 United Nations Habitat Planning Design Award
位置	中国富阳
面积	57公顷
客户	中大地产集团
奖项	2009年联合国人居规划设计奖

Fuyang has convenient transportation links and a breathtaking landscape including mountains and bodies of water just 25 miles from Hang Zhou's central business district by highway. These and other on-site conditions have been factored into the award-winning master plans for the Zhongda Fuyang Urban Design project, an extension of Fuyang conceived by JWDA for Zhongda Property Group on a 57 hectare site along the Fuchun River.

融合山水环境	To Exposed to the Mountain and the Water
隐 居 山 林	To Nestle in the Mountain
自 然 生 长	Grow Naturally
结 合 环 境	Integrate with a Sense of Environment
顺 应 地 形	Sit on Undulating Terrain

Zhongda Fuyang is designed to integrate the timeless mountain and water landscape with the emerging urban fabric, complementing cultural history while creating a distinctive experience for residents and visitors. In celebrating its surroundings, the new community will function as a key connector between existing towns and new development areas that treat the natural environment as a precious civic resource. Thus, development will produce sightseeing passageways that converge towards the waterfront, architecture that merges with the natural landscape, and a walking city where nature is present wherever pedestrians may be.







富阳地处“西湖—富春江—千岛湖—黄山”国家级黄金旅游线的前站，拥有便捷的交通联系和美不胜收的山水风景资源，通过高速与杭州相连，距杭州市中心商务区40多公里。作为富阳城市的延生段，JWDA为中大地产在富阳城东、富春江沿岸57公顷范围内，成功打造了充分利用和结合区位优势与资源条件的中大富阳富春山水社区城市设计项目。

中大富阳项目设计旨在融合超越时空界限的山水景观与城市肌理，在为居民和游客创造独特居住和度假体验的同时，融入浓厚的历史文化。作为新旧城区交界的关键节点，新社区的设计将自然环境作为宝贵的公共资源，以表达对环境尊重。因此，项目设计中提供了连接到水岸边的景观通廊和融入自然环境的建筑，创造了一个生态宜居且适合步行尺度的城市空间。





# Zhangjiang Middle District Urban Design Plan

张江中区城市设计

Location Shanghai, China  
Area 210 hectares  
Project Type Urban Design  
Client Shanghai Zhangjiang Development Group  
Team Consultant K+R  
Awards Frist Prize & Commission, International Invitational Competition

位置 中国上海  
面积 210公顷  
项目类别 城市设计  
客户 上海张江（集团）有限公司  
合作团队 K+R  
奖项 国际邀请赛一等奖与项目委托

## Urban Design Objectives

- Cultivate a vital scientific community
- Promote interpersonal communication and cooperation
- Foster ecological sustainability
- Emphasize healthy lifestyles

## 张江城市设计目标

- 提供充满生机的科研社区
- 促进人与人的交流与合作
- 提倡城市生态与可持续发展
- 倡导现代的工作和生活方式



Zhangjiang defines itself as a budding technology and science hub in Shanghai. JWDA developed a master plan to address this area's need for supporting facilities. It is spread out over 255.5 hectares and includes public facilities, office buildings, research centers and a business pedestrian street. All of these facilities are designed to be connected by an efficiently designed traffic system, creating a dynamic and ideal area for both corporate and domestic life.

张江高科技园区是上海的新兴科技产业园区，中区占地255.5公顷，包括公共服务设施、商务办公、科研中心和商务步行街。在本项目设计中，JWDA充分考虑和体现了这个地区对于配套服务设施的需求，并且所有的设施都通过高效的交通系统相连，创造了一个适合企业与家庭生活的充满活力的完美科技园区。





# Zhangjiang IC Park Parcel 2-4 Mixed Use Development

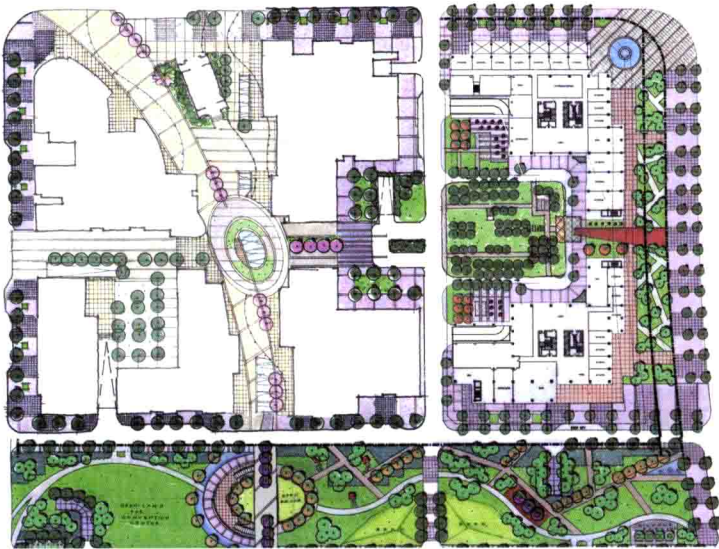
上海张江集电港2-4地块商业中心

Location Shanghai, China  
Area 173,100 square meters (Aboveground)  
Client Zhangjiang IC Industrial Zone Development Co., Ltd.

位置 中国上海  
面积 173 100平方米（地上）  
客户 张江集成电路产业区开发有限公司

The mixed use development is divided into both eastern and western components, separated by the north-south Green Walk. The eastern end consists of four Class A office buildings, while the west side is made up of four SOHO office buildings. In order to honor to the traditional context, the single office building located in the center of the complex reflects the architectural style of the original church.

该建筑综合体项目由一条南北走向的绿化景观步行带将建筑群分为东西组团。东组团由四栋甲级商务办公楼组成，西组团由四栋SOHO办公楼组成。位于景观广场中央的独栋商业建筑采用了基地原有教堂（拆除）的建筑风格和元素，以表示对基地传统文脉的尊重。





# Zhongtian Group South China Sea Project

## 南边海三亚渔人湾

Life is good in Sanya, the southernmost city on the Chinese island of Hainan, where its legendary tropical climate has helped transform a community of 685,408 (2010 census) into a popular tourist destination.

Since current regional development risks reducing the richness and complexity of existing “organic” neighborhoods to the arbitrary and often boring aesthetic uniformity of “controlled” environments, the coming of Zhongtian Group Sanya South Bay, a mixed-use development on the coast of Fisherman’s Bay, designed by JWDA with K+R Design Inc. for Zhongtian Urban Development Group, heralds a promising and superior approach. The project, building 5.9 million square feet of hotels, apartments, retail shops and entertainment facilities on a 172.9-acre site, integrates new construction with the city fabric, introducing vibrant public spaces to promote open access, connect activities and reinforce the historic inner harbor’s sense of place.

Recognizing the project’s potential to revive the neighborhood, the client has proposed a comprehensive land-use and transit strategy to transform fractured marine-front roadways into “Wharf Circle Drive,” a charming, landscaped, walkable loop that incorporates jogging trails and tramways, linking separate activities with the project’s own distinctive facilities to enrich life throughout the inner harbor.

Location	Hainan, China	位置	中国海南三亚
Area	47 hectares	面积	47公顷
Project Type	Master Planning/Schematic Design	项目类别	总体规划 / 方案设计
Client	Zhongtian Urban Development Group	客户	中天城投集团股份有限公司
Team Consultant	K+R	合作团队	K+R

三亚，位于中国海南岛最南端。那里生活幸福，气候宜人，典型的热带气候将这座拥有685 408 (2010年人口普查数据) 人口的城市转型为一个相当热门的旅游胜地。因时下地域开发的局限，现存的有机邻里关系逐步丧失多样性和丰富性；同时，由于设计单一化，导致整体环境审美上既随意又无趣。然而，JWDA和K+R携手为中天城市发展集团设计的“渔人码头”，突破了这一瓶颈。

渔人码头项目，占地172.9英亩，总建筑面积为590万平方英尺。其中酒店、公寓、零售商铺和娱乐设施的设计结合城市肌理，引入活力公共空间，以之提升城市公共通道、丰富活动及强化内港的历史风韵。

基于这个项目巨大的潜力，业主提出土地利用总体性开发及转变经营策略的想法，将原本错开分行的沿海车道转变为“环码头人行车道”，形成一个拥有迷人风景，慢跑人行道及电轨车道共用的环形景观带。与此同时，亦可把不同的活动与这个项目独有的设施结合起来，展现内港的自由丰富的生活方式。





# Lijiang Mountainview Resort & Hotel Development Plan

## 丽江综合旅游地产项目

The Lijiang Mountainview Resort & Hotel Development is set high above the plain over Lijiang and is a collection of luxury retreat villas and a 5-star hotel located in a magical natural landscape of Yunnan, China, appropriately named “Above the Clouds”. The image of the retreat villas and adjacent hotel has the appearance of a hillside village rising out of the clouds and reaching for the heavens above. The retreat villas and hotel have spectacular views, ranging from the beautiful 18-hole golf course to the Jade Dragon Snow Mountain. Hotel facilities include a Lijiang Chinese herbal medicine clinic, health spa, and restaurant. JWDA utilized the natural contour of the land to place the project in nature, conforming to the topography of the site. Lijiang Mountainview is a one-of-a-kind luxurious resort, combining traditional regional architecture with contemporary style.

Location	Yunnan, China
Area	47 hectares
Client	Franshion Properties (China) Ltd.

位置	中国云南丽江
面积	47公顷
客户	方兴地产（中国）有限公司



该项目位于中国云南玉龙雪山“5A”级景区甘海子内，被神奇的自然风光环抱，由豪华度假别墅和一个五星级酒店组成。度假酒店与相邻的度假别墅犹如从云端生长而出的山麓小镇，无限接近天堂，壮观的风景从优美的18洞高尔夫球场一直绵延至玉龙雪山。酒店提供了包括丽江中医药会馆、spa中心和生态餐厅在内的各类服务设施。JWDA的设计顺应自然山势摆放建筑，使度假别墅等建筑充分融入自然环境。该项目结合当地传统建筑特点与现代风格，造就了无与伦比的顶级奢华度假村。





JWDA

# Dalian Red Flag Valley Golf Community

大连红旗谷高尔夫社区







The Dalian Red Flag Valley Golf Community located in Red Flag Town, Dalian City, is 21 kilometers from downtown and 12 kilometers from the airport. JWDA did the planning, architecture, landscaping and the interior design of the west area, which occupies 82,910 square meters and includes a clubhouse, a hotel and a low-density residential area. This project is unique in that it is built atop uneven terrain and has a beautiful view of the mountains. Guests are free to walk between the buildings and enjoy the breathtaking landscape. The designers were inspired by American Craftsman architecture and applied this style to the project by incorporating wood details to seamlessly merge the resort with its surrounding natural environment.

Location	Dalian, China
Area	233,000 square meters
Project Type	Hospitality/Residential
Client	Dalian Red Flag Valley Golf Club Co., Ltd.
Awards	2012 Nugget Award Mixed Use Project

此项目位于大连市甘井子区红旗镇，离市中心21公里、机场12公里。JWDA完成了该项目西区包括规划、建筑、景观和室内设计在内的82 910平方米的设计，包括一个会所、一个酒店和一个低密度居住社区。项目的独特性在于建造于崎岖不平的地形上，坐拥秀美的山地风光。游客可随意穿行于建筑之间，欣赏美妙的自然风光。建筑采用美国Craftsman风格，运用大量木结构细节来达到使建筑融入周边环境的效果。

位置	中国大连
面积	233 000平方米
项目类别	酒店/住宅
客户	大连红旗谷高尔夫俱乐部有限公司
奖项	2012综合体项目金砖奖





# Hainan Longmu Bay Resort

海南龙沐湾国际旅游度假区

Location Sanya, Hainan, China  
Area 320,000 square meters  
Project Type Hospitality  
Client GuoXin (HaiNan) Long Mu Bay Investment Holding  
Awards 2013 Gold Nugget Merit Award

位置 中国海南  
面积 320 000 平方米  
项目类别 酒店  
客户 国信（海南）龙沐湾投资控股有限公司  
奖项 2013金砖奖荣誉奖

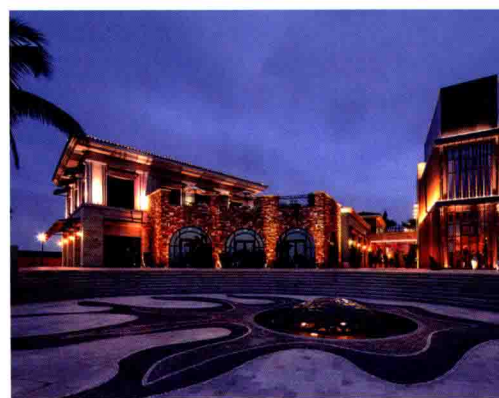
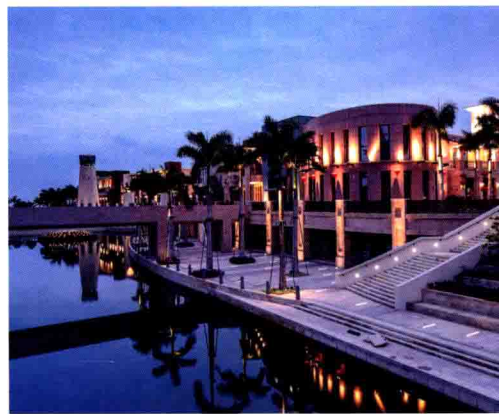
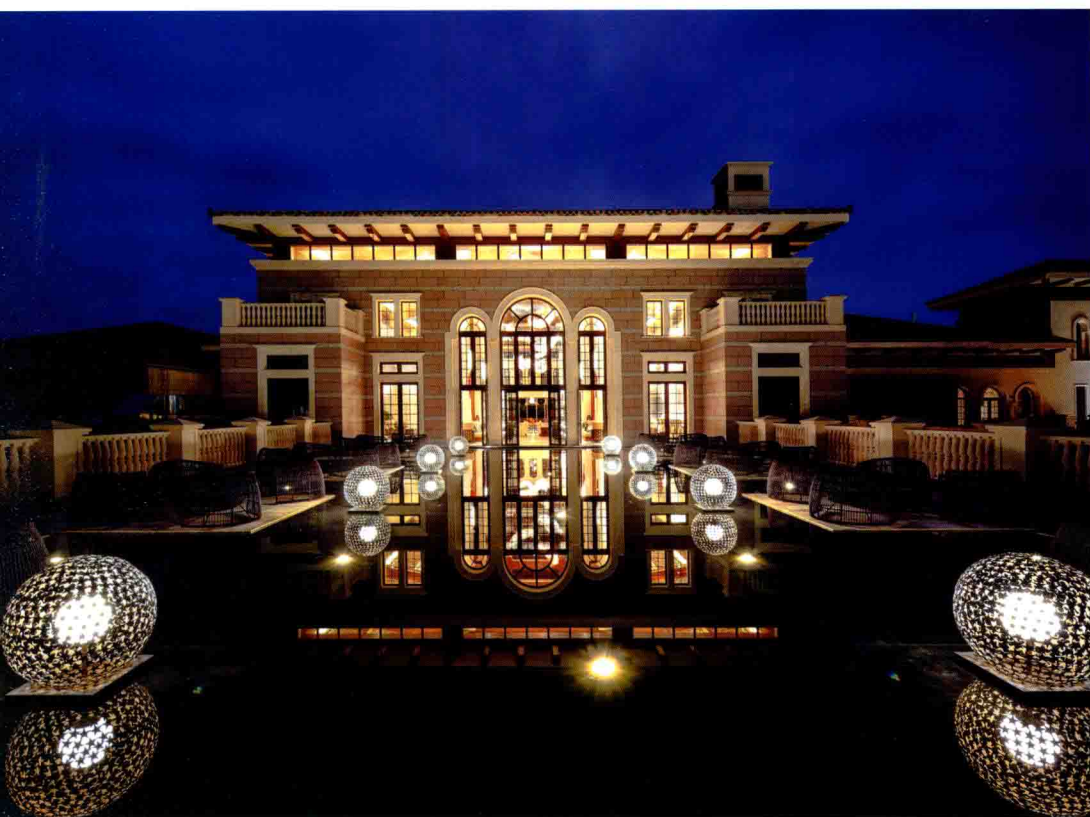


Long Mu Bay Resort is located on the western shore of Hainan Province, only 88 kilometers away from Sanya City. Convenient transportation makes it a true holiday destination. A unique feature of this development is the ocean view, which can be seen from the beachfront villas, family suites, and guest rooms. The whole site playfully evokes an organic aquatic theme and serves to encourage a variety of leisure activities.

龙沐湾国际旅游度假区位于海南省西部的乐东县境内，距三亚市仅88公里，便捷的交通使之成为了一处名副其实的度假目的地。海滩别墅、家庭式度假村和度假公寓各自享有优美的海景资源，使龙沐湾项目独具特色。整个基地以海洋生物为主题，激起游客进行多种休闲度假活动的兴趣。



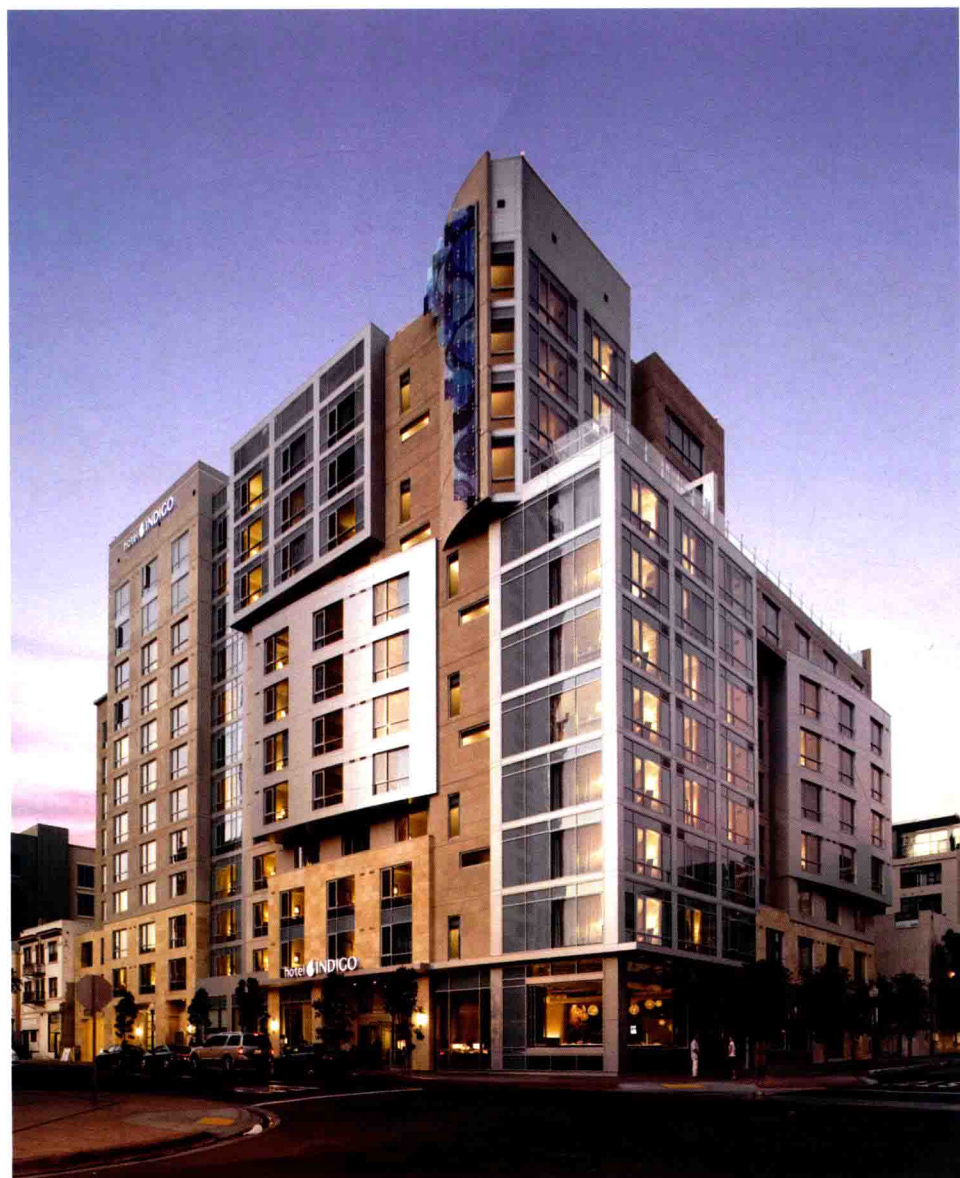






# Hotel Indigo

英迪格酒店

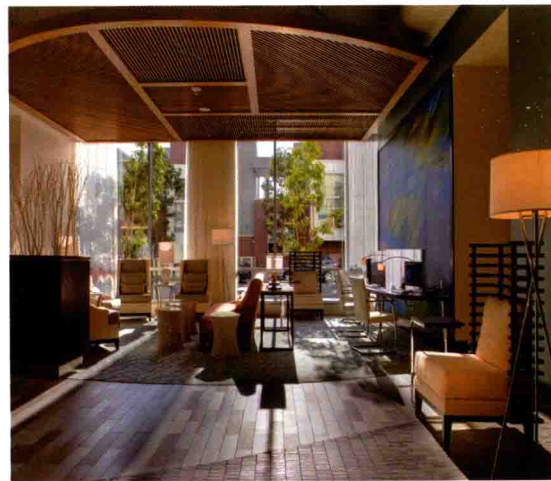


Location San Diego, California, USA  
 Area 136,800 square feet  
 Client InterContinental Hotels Group  
 Awards 2010 American Institute of Interior Design Award  
 2010 Illuminating Engineer Society Award  
 Publications *The Los Angeles Times*  
*Riviera Interiors Magazine - Design of the Times!*  
*San Diego Business Journal*  
*World's LEED Hotels*  
*Hospitality Design Magazine*

位置 美国加州圣地亚哥  
 面积 136,800平方英尺  
 客户 洲际酒店集团  
 奖项 2010年美国学院室内设计奖  
 2010年照明工程师协会奖  
 出版物 《洛杉矶时报》  
 《海滨室内杂志-时代设计》  
 《圣地亚哥商业杂志》  
 《世界绿色建筑酒店》  
 《酒店设计杂志》

JWDA was commissioned by InterContinental Hotels Group to provide design services for Hotel Indigo. The 12-story, 210-room property includes five suites and has the distinction of many "firsts" in San Diego sustainable hospitality design: Hotel Indigo is the first sustainably built hotel in San Diego, the first to achieve LEED certification, the first downtown San Diego building to have a green roof, and the first LEED-certified hotel in the U.S. for InterContinental Hotel Groups.

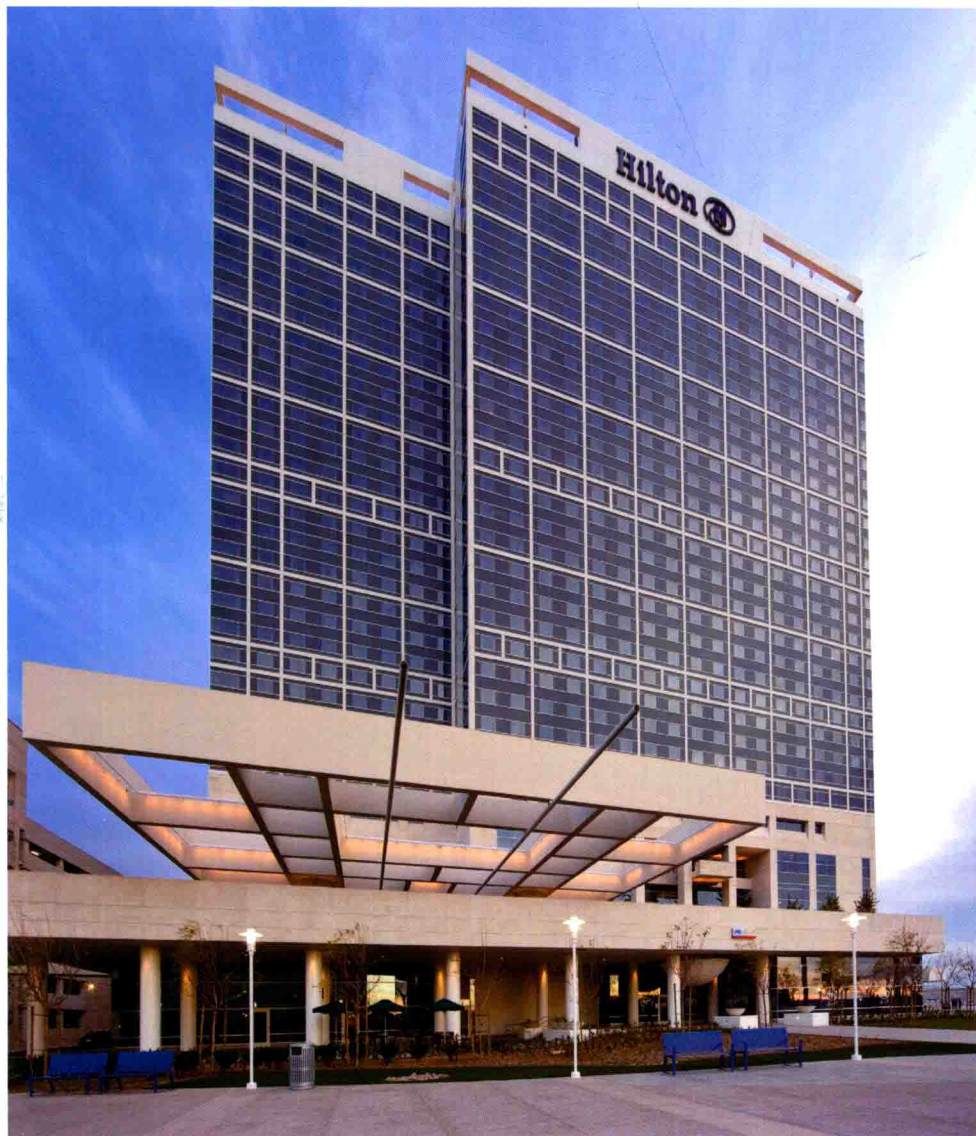
由英迪格酒店委托，JWDA设计完成的英迪格精品酒店项目，建筑为12层高，由包括5个套房的210间房间组成，在圣地亚哥可持续酒店设计领域创造了许多“第一”。圣地亚哥英迪格酒店是圣地亚哥第一座建成的可持续酒店建筑，第一个满足LEED要求的建筑，市中心第一座有屋顶花园的建筑以及英迪格酒店集团在美国建成的第一个通过LEED审核的建筑。该精品酒店从科技和设计上为客户提供了独特的可达性体验。





# San Diego Hilton Bayfront Convention Center Hotel

圣地亚哥希尔顿会议中心酒店



Location	San Diego, California, USA
Area	1,600,000 square feet
Client	Hilton Hotels / Phelps / Portman
Team Cooperation	John Portman Associates in partnership with JWDA
	Landscape: Sasaki Associates
	Interior Design: HBA
Awards	National Design / Build Institute Design
Publications	<i>Hotel Business</i>

位置	美国加州圣地亚哥
面积	1 600 000 平方英尺
客户	希尔顿酒店/菲利普斯/波特曼
合作团队	约翰波特曼联合协会
	景观: 佐佐木协会
	室内: HBA
奖项	国家设计/建筑设计研究院
出版物	《酒店业务》

The Hilton San Diego Bayfront Hotel, located steps away from the San Diego Convention Center, offers gracious amenities including over 100,000 square feet of meeting and ballroom space. The lavishly landscaped 10-acre site accommodates a 385-foot hotel tower with a 1,200 luxurious rooms, a retail space, restaurants, a spa, a health center, a swimming pool, and an adjacent 2,000 space parking garage. The development also provides the city with a new 4.3-acre public plaza along the bay incorporating public facilities, water features, and lighting.

圣地亚哥会议中心希尔顿酒店紧邻会展中心，酒店占地4公顷，主楼高度约130米，拥有1200豪华间。酒店的附属设施包括1万多平方米的会议中心和演讲厅、零售商业、SPA、游泳池和健身会所，停车库拥有2000车位。酒店沿滨水地带是一处约1.5公顷的喷泉广场，为市民和游客提供了一处城市公共活动空间。





# Del Mar L'Auberge Hotel

德尔玛L'Auberge酒店

Location	Del Mar, California, USA
Area	260,000 square feet
Client	Destination Hotels & Resorts
Awards	2010 Illumination Engineer Society Awards The Illuminating Engineering Society of North America 2010 "World's Best Resort Award" Travel & Leisure Magazine 2010 Reader's Choice: Best Continental Resort Award 2008/2009 AAA Four Diamond Award 2009 Best of San Diego: Best Spa by the Sea Ranch & Coast Magazine C California Style Magazine
Publications	

位置	美国加州德尔玛
面积	260 000平方英尺
客户	当地酒店&度假村
奖项	2010年照明工程师学会大奖 —北美照明工程协会 2010年“世界最佳度假酒店奖” —《旅游休闲杂志》 2010年读者选择奖：最佳度假酒店奖 —《旅游休闲杂志》 2008/2009 AAA四钻奖 2009年最佳圣地亚哥：最佳水疗中心 —《圣地亚哥杂志》 《牧场及海岸杂志》 《C 加州风格杂志》
出版物	

L'Auberge Del Mar Resort and Spa underwent a \$25 million renovation and became one of the region's most luxurious beach resorts. JWDA's design services included re-design and re-purposing of the hotel's lobby, restaurant, European-style spa and other public spaces including the charming 7,000 square-foot Crosby Banquet/Ballroom facilities. Exterior function spaces at the resort were given new life through the introduction of water features, fire pits, and new poolside lounging areas.



本项目是18年前建成的，更新项目总投资2500万美元，将其打造成当地首屈一指的现代风格的豪华度假宾馆。JWDA为其操刀的更新项目包括加建新的迎宾入口、欧式spa以及包括华丽的7000平方英尺Crosby宴会/舞厅在内的其他公共空间。室外空间则通过引入水景、炉火和新增泳池边的座位区被赋予了新的活力。





# Jinmao Chongming Hyatt Hotel

金茂上海凯悦酒店

Location Shanghai, China  
Area 43,000 square meters  
Client Jinmao (shanghai) Development Co., Ltd.

位置 中国上海  
面积 43,000平方米  
客户 金茂（上海）置业有限公司

Jinmao Chongming Hyatt Hotel integrates traditional Eastern garden spaces with hospitality design principles to develop a localized 'Modern-Chinese style' of architecture. To allow the scenery to continuously change as guests progress through the hotel, the structure is surrounded with a series of courtyards interwoven into the landscape. The Chinese and Western restaurants, wine cellar, and tea room provide guests with a taste of both Eastern and Western cultures.

设计方案将东方园林空间的韵味与分散休闲特征的度假酒店有机融合,意在营造现代“新中式”的地方性建筑。“步移景易”的法则使建筑成为庭院的背景,与绿化交融。中西餐厅、酒窖、茶室为客人提供兼有中西文化特色的餐饮服务。力图将酒店打造为上海周边的特色旅游点。

