

SHANGHAI
MARITIME
UNIVERSITY

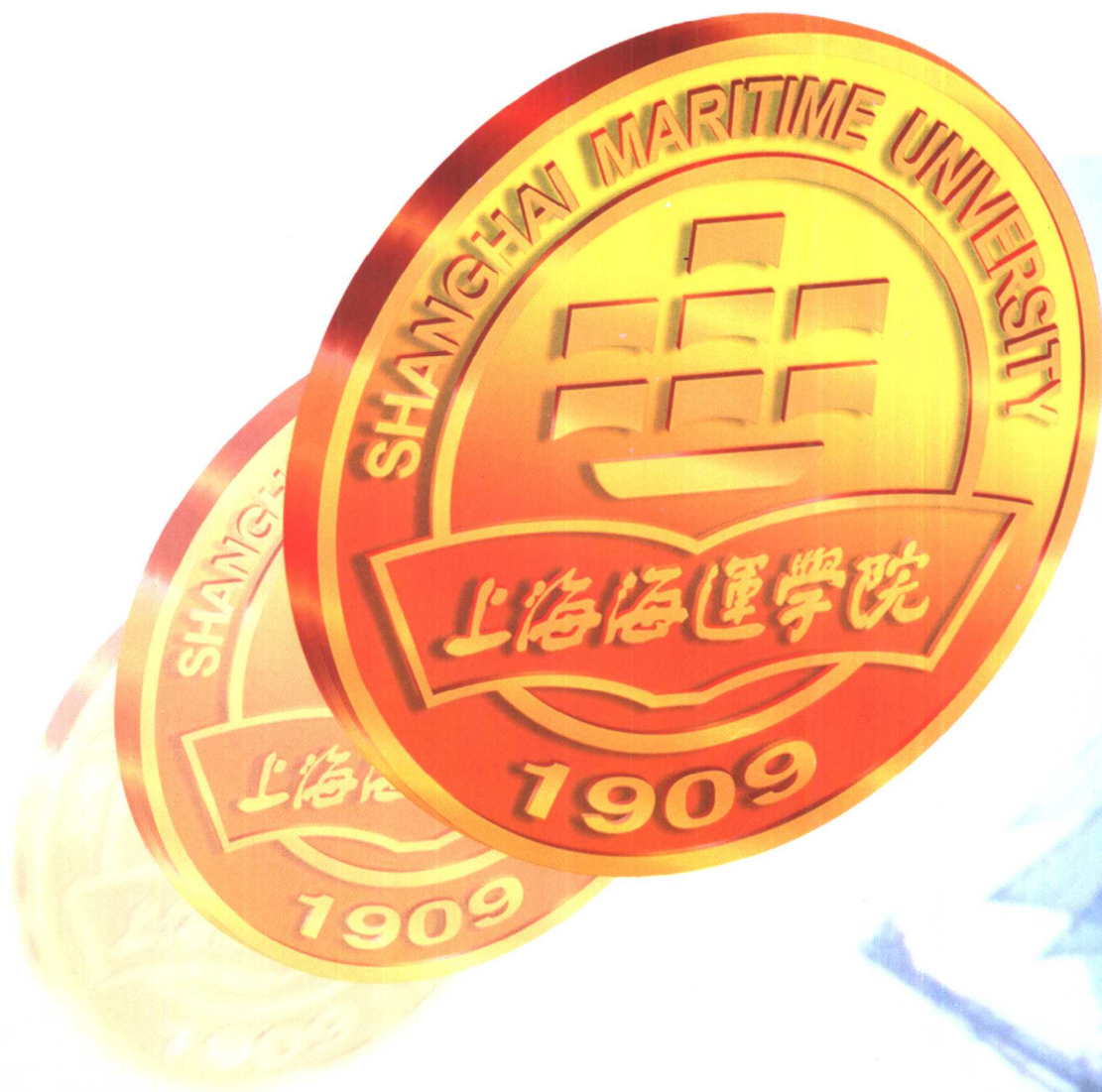
上海海運學院





校 园
Campus





The background of the entire page is a photograph of a large, multi-masted sailing ship, possibly a clipper, sailing on a deep blue sea with white-capped waves. The sky is a lighter blue with some wispy clouds. The ship is positioned on the left side of the frame, with its sails partially visible.

谨献给

上海海运学院创建者
辛勤耕耘的园丁

目 录

90th



序	PREFACE	1
学校简介	SHANGHAI MARITIME UNIVERSITY	2
领导关怀	STATE & CITY LEADERS' SOLICITUDE	4
历任领导	SUCCESSIVE HEADS OF SMU	12
现任领导	PRESENT SMU LEADERS	15
海运学院(系)专业	SMU'S COURSE OFFERINGS	16
学位与研究生教育授权学科	SMU'S DISCIPLINES & ACADEMIC DEGREES OFFERED	17
正高级职称人员研究方向	PROFESSORS & THEIR CURRENT RESEARCH PROJECTS	18
吴淞商船学院	WUSONG MERCHANT MARINE COLLEGE	22
管理学院	COLLEGE OF MANAGEMENT	25
工学院	COLLEGE OF ENGINEERING	28
外语系	DEPARTMENT OF FOREIGN LANGUAGES	30
基础部	DIVISION OF BASIC COURSES	31
研究生部	GRADUATE SCHOOL	32
图书馆	LIBRARY	33
继续教育学院	COLLEGE OF CONTINUING EDUCATION	34
科学研究	SCIENTIFIC RESEARCH	36
教学设备	FACILITIES FOR TEACHING	39
校办产业	UNIVERSITY-RUN ENTERPRISES	40
水上训练站	AQUATIC TRAINING BASE	43
对外交流	INTERNATIONAL CONTACTS	44
校园风采	SNAPSHOTS ON CAMPUS	48

C
ONTENTS

序

1999 年是中国高等航海教育 90 华诞暨上海海运学院校庆的喜庆之年。借《上海海运学院画册》出版之际，谨向学校的全体师生员工表示热烈的祝贺和亲切的慰问！

经过几代人的辛勤耕耘和不懈努力，上海海运学院已逐步发展建设成为在国内外具有重要影响的高等航海教育学府。如今学院的毕业生已遍布全国远洋、海运及其他企事业单位，他们当中的许多人已成为发展国内外海上运输和航海科技事业的骨干力量，真可谓是“学子遍五洲，桃李满天下”。

21 世纪即将来临，我国交通事业将迎来前所未有的发展时期。希望学校的广大师生员工以强烈的使命感和责任感，充分发挥地处上海及浦东的地域优势，励精图治，不断进取，为我国航海高等教育的进一步发展，为上海国际航运中心的建设，为我国交通事业的不断腾飞续写新篇，再创辉煌。

中华人民共和国交通部副部长

张春贤



上海海运学院地处东海之滨、黄浦江畔的浦东新区陆家嘴金融贸易区,是一所以经济管理与航运技术为重点的具有工学、管理、经济、文学、法学等学科门类的多科性大学,也是首批获得中华人民共和国船员教育和培训质量体系证书以及挪威船级社颁发的 ISO9001 质量保证体系证书的高校。

上海海运学院前身可追溯到 1909 年晚清邮船部上海高等实业学堂(南洋公学)船政科,1959 年交通部在沪重建上海海运学院,至今已有 90 年的办学历史。目前学校设有 19 个本科专业,4 个专科专业,20 个学科有博士和硕士学位授予权。其中工商管理硕士(MBA)是交通部属高校中唯一有学位授予权的高校。学校有工程硕士学位授予权,有在职硕士研究生并进行单独考试的自主权和同等学力申请硕士学位授予权。交通运输规划与管理、产业经济学和电力传动与自动化三个学科为交通部和上海市重点学科。学校现拥有专职教师近 700 人,其中正副教授 300 余人,在校本、专科生 5000 余人,研究生近 600 人,成人教育学生 3000 人,并招收海外留学生。学校与美国、英国、日本、挪威、荷兰等 20 多个国家、地区和国际组织保持着友好往来、学术交流和合作办学。

上海海运学院的教学、科研设施齐全,拥有设备先进的航海和轮机实验中心(包括雷达模拟器、船舶操纵模拟器、轮机模拟器、天象馆、轮机自动化机舱等实验设备)、管理模拟中心、电教中心、计算中心及其它各类实验室 40 多个。设有水上训练基地,以及游泳池和体育馆。拥有“育银”、“育锋”等万吨级远洋教学实习船和“天鹰”、“天琴”两艘无限航区远洋训练帆船。学校图书馆藏书 70 余万册,中外期刊 2000 多种,其中海商法律类图书与资料的馆藏量为国内之最。

学校还拥有水运经济科学研究所、机械工程设计研究所、航海科学技术研究所、轮机工程研究所、网络计算研究所、应用数学物理研究所、应用电子研究所、社会发展研究所、高等教育研究所、CAD 研究室、海商法研究中心、上海国际航运研究中心、中荷教育研究中心等科研机构。此外,交通部港口机械质量检测中心、全国海洋运输情报网、交通部出国培训部、交通部上海船员培训中心、吴淞商船专科学校校友会均设在学校内。学校拥有专职科研人员 100 多名和一批兼职研究员,每年科研经费近 2000 万元。学校出版的学术刊物有《上海海运学院学报》、《水运管理》、《集装箱化》、《远洋运输》、《计算机辅助工程》、《海运情报》等。

上海海运学院将充分利用建设上海国际航运中心和浦东开发开放的有利时机,立足航运、面向社会,发挥学校地处浦东的地域优势和自身的专业特色,使航海类专业的教育质量和学术水平跨入世界先进行列,交通管理类专业继续保持国内领先地位,同时拓宽专业覆盖面,提高全校的教学质量和学科水平。

Shanghai Maritime University (SMU), located in the Lujiazui Finance and Trade Zone, Pudong - the east area of Shanghai bordering on the Huangpu River and the East China Sea, is an institution of higher learning with 5 fields of study, i.e. engineering, management, economics, literature and the science of law, particular stress being placed on the disciplines of economic management and navigational technology. SMU is among the first institutions of higher learning in China that received the Certificate of Seafarer Education and Training Quality System issued by the People's Republic of China, and the ISO9001 Quality Guarantee System Certificate issued by Norwegian Ships' Classification Society.

SMU has a history of 90 years because it grew out of the Shipping Section of Shanghai Industrial College founded in 1909 (towards the end of the Qing Dynasty), which was later renamed a few times and of the school names Wusong Merchant Marine College was the most renowned. It was not, however, until 1959 that the Ministry of Communications reset up the college and renamed it Shanghai Maritime University.

SMU provides 19 programs leading to the Bachelor's degree and 4 programs leading to the Associate's degree, with the courses of "communications & transport planning and management", "industrial economics", and "electrical drive and automation" designated as three key specialties by the Ministry of Communications and Shanghai Municipality.

SMU has been authorized by the State to offer a program leading to the Doctor's degree and 19 programs leading to the Master's degree. Besides, it is the only institution of higher learning under the Ministry of Communications that has been authorized to award the Master's degree in business administration (MBA). Furthermore, it has also been authorized by the State to organize its own entrance examinations (instead of using national examination papers) for enrolling on-job graduate students, and to give the Master's degree to applicants with academic attainments equivalent to the standards set for the programs concerned.

SMU is proud of having a competent full-time teaching staff of nearly 700, including more than 300 professors and associate professors, and a student population of almost 9,000, of whom over 5,000 students studying for the Bachelor's degree or the Associate's degree, approximately 600 graduate students studying mostly for the Master's degree and partly for the Doctor's degree, as well as around 3,000 students receiving adult education. It enrolls overseas students, too, and keeps exchange of friendly visits, academic exchange and cooperative relations in education with such foreign countries as the USA, the United Kingdom, Japan, Norway, Holland, and so on, in addition to the various regions and international organizations concerned.

SMU boasts a wide range of facilities for teaching and scientific research purposes. It has an experimental center for navigation and marine engine (armed with such outstanding support facilities as radar simulators, a ship maneuvering simulator, a marine engine simulator, a planetarium, an unmanned marine engine room), a management simulation center, an audiovisual education center, a computing center, and more than 40 labs for different purposes. SMU also has an aquatic training base, a swimming pool, and a gymnasium. In addition, it owns three training ships of the 10,000 DWT class, the "Yu Yin", "Yu Feng" and "Bao Long", as well as two ocean-going sailing boats, "Tian Ying" and "Tian Qin", without any limitation on their range of navigation. The university library holds over 700,000 books and more than 2,000 kinds of Chinese and foreign periodicals; its collection of literature on maritime law outranks that of any other library in this country.

SMU has the following scientific research institutes: Research Institute of Shipping Economics, Research Institute of Mechanical Engineering and Design, Research Institute of Navigational Science and Technology, Research Institute of Marine Engineering, Research Institute of Network Computation, Research Institute of Applied Mathematics and Physics, Research Institute of Applied Electronics, Research Institute of Social Development, Research Institute of Higher Education, Research Room of Computer-assisted Design (CAD), Maritime Law Research Center, Research Center for Shanghai International Shipping, China-Holland Education Research Institute, etc. In SMU, there are over 100 research fellows and a batch of part-time researchers, their annual funds for scientific research amounting to RMB ¥ 20,000,000. The academic journals published by SMU include: *Journal of Shanghai Maritime University*, *Water Transport Management*, *Containerization*, *Ocean Shipping*, *Computer-assisted Engineering*, and *Ocean Shipping Information*.

In addition, SMU houses the following institutions directly under the Ministry of Communications: Harbor Machinery Quality Inspection Center, National Ocean-Shipping Information Network, English Training Center, Seamen Training Center in Shanghai, and Alumni Association of Former Wusong Merchant Marine College.

SMU will avail itself of the Government policy of building Shanghai into an international shipping center as well as of opening and developing Pudong - the east area of Shanghai, to do its best to reach the world's advanced level as far as the educational quality of navigation-related specialties and the academic standing in navigation are concerned. Meanwhile, it will do everything possible to hold the lead in China in specialties concerning communications & transport management, and to enlarge the range of specialized fields of study, so as to enhance the quality of education as a whole and raise the scientific research to a higher level in SMU. It will, while catering to the needs of society, give the fullest play to its advantages in shipping, in being located in Pudong, and in having its various specialties with their respective characteristics, for achieving its long-term goals.



贺 信

值此上海海运学院建校90周年之际，谨向全校师生员工致以衷心的祝贺！

在党的教育方针指引下，你校发扬“艰苦奋斗、求实创新”的传统，坚持正确的办学方向，在教学、科研等方面不断探索，不断进步，已发展成为一所以经济管理和交通运输为特色的多学科的大学。近年来，你校又利用学科和地处浦东的优势，积极为浦东开发开放和建设上海国际航运中心服务，为上海的经济建设作出了积极的贡献。

希望你校继续以邓小平理论为指导，抓住机遇，锐意进取，加强学科建设，进一步提高教学质量和科研水平，为建设上海国际航运中心、推动我国交通事业的发展作出新的贡献。

上海市委书记

黄菊

中共中央政治局委员、中共上海市委书记黄菊的贺信

Congratulatory letter from Huang Ju, member of the Political Bureau of the Central Committee of CPC and Secretary of the Shanghai Municipal Party Committee



贺 信

值此纪念中国高等航海教育 90 周年暨上海海运学院校庆之际，谨向你校全体师生员工表示热烈的祝贺！

上海海运学院是一所以经济管理与交通运输为重点的具有工学、管理、经济、文学和法学等学科门类的多科性大学。建校以来，为国家培养了大批高级航运专门人才。特别是改革开放以来，学校广大教职工锐意改革，开拓进取，努力实施“攀登计划”和“育才工程”，使学校在教学、科研、师资队伍建设和精神文明建设等方面都取得了显著成绩。学校的办学规模和办学层次进一步提高，形成了具有博士、硕士和学士等结构完整的高等教育体系。学校在 1998 年分别获得交通部颁发的船员教育和培训质量体系证书及挪威船级社颁发的 ISO9001 质量体系证书，这充分反映了学校的教学质量和管理水平跃上了一个新台阶。近几年来，学校又充分发挥学科及地处浦东的优势，积极为科教兴交和建设上海国际航运中心服务，取得了可喜成绩，为国家交通运输事业和上海的经济的发展作出了应有贡献。

希望你校继续高举邓小平理论的伟大旗帜，努力实现江泽民总书记提出的教育工作的“两个重要转变”，立足交通，面向社会，进一步深化教学改革，加强学科建设，为培养更多更好的面向 21 世纪的高质量专门人才，为中国航海高等教育事业作出更大贡献。

中华人民共和国交通部部长

中共中央委员、交通部部长黄镇东的贺信

Congratulatory letter from Huang Zhendong, member of the Central Committee of CPC and Minister of Communications

九十載桃李芬
芳奔百年再創
輝煌

倪志福

一九九八年八月



中共中央委员、原全国人大常委会副委员长倪志福题词

Inscriptions by Ni Zhifu, member of the Central Committee of CPC and former Vice-Chairman of the Standing Committee of the National People's Congress

航海家的摇篮

祝贺上海海运学院校庆

徐匡迪

一九九八年十月四日

中共中央委员、上海市市长徐匡迪题词

Inscriptions by Xu Kuangdi, member of the Central Committee of CPC and Mayor of Shanghai

上海海运学院
九十年
王力平

杨 探

中共上海市委副书记王力平题词

Inscriptions by Wang Liping, Deputy Secretary of the Shanghai Municipal Party Committee

坚持三个面向
培育四有新人

为上海音乐学院建院九十周年而题

一九九九年三月 龚学平



中共上海市委副书记龚学平题词

Inscriptions by Gong Xueping, Deputy Secretary of the Shanghai Municipal Party Committee



吴邦国副总理视察学校

Wu Bangguo, Vice-Premier of the State Council, inspecting SMU



原全国人大常委会副委员长倪志福视察学校

Ni Zhifu, former Vice-Chairman of the Standing Committee of the National People's Congress, inspecting SMU



原国家教委主任朱开轩(右二)视察学校

Zhu Kaixuan (second from right), former Chairman of State Education Commission, inspecting SMU



交通部副部长洪善祥(右二)视察学校

Hong Shanxiang, Vice-Minister of Communications, inspecting SMU



交通部长黄镇东(右一)视察学校
Huang Zhendong (first from right), Minister of Communications,
inspecting SMU



国务院新闻办公室主任、原上海市副市长赵启正(右二)视察学校
Zhao Qizheng (second from right), Director of the Information
Office of the State Council & former Vice-Mayor of Shanghai,
inspecting SMU



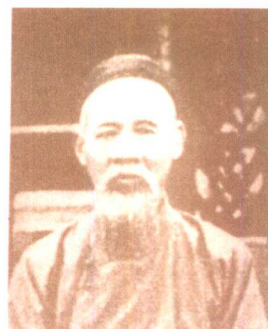
上海市副市长周慕尧(右一)与我院党政领导座谈
Zhou Muyao (first from right), Vice-Mayor of Shanghai, having an
informal discussion with Party & administrative leaders of SMU



交通部副部长张春贤(右一)视察学校“安居工程”
Zhang Chunxian (first from right), Vice-Minister of Communications,
inspecting accommodations for both staff & workers of SMU

历任院（校）长名录

序号	名称	姓名	任期
1	(清) 邮传部上海高等实业学堂船政科监督	唐文治	1909. 8--1911. 8
2	(清) 邮传部高等商船学堂监督	唐文治	1911. 8--1912. 3
3	(民国交通部) 吴淞商船学校校长	萨镇冰	1912. 3--1915
4	(民国) 交通部吴淞商船专科学校校长	王伯群	1929. 7--1930. 9
5	(民国) 交通部吴淞商船专科学校代理校长	杨志雄	1930. 9--1932. 5
6	(民国) 交通部吴淞商船专科学校代理校长	夏孙鹏	1932. 5--1933. 1
7	(民国) 交通部吴淞商船专科学校代理校长	徐祖藩	1933. 1--1934. 7
8	(民国) 交通部吴淞商船专科学校校长	许建廷	1934. 7--1935. 1
9	(民国) 交通部吴淞商船专科学校校长	伍大名	1935. 1--1936. 1
10	(民国) 交通部吴淞商船专科学校校长	刘永诰	1936. 1--1937. 8
11	(民国教育部) 国立重庆商船专科学校校长	吴俊生	1939. 9--1939. 11
12	(民国教育部) 国立重庆商船专科学校校长	宋建勋	1939. 11--1943. 6
13	国立吴淞商船专科学校校长	周均时	1946. 7--1949. 4
14	国立吴淞商船专科学校校长	于 眉	1950. 3--1950. 9
15	上海航务学院校务委员会主任	于 眉	1950. 9--1951. 1
16	上海航务学院校务委员会主任	黄逸峰	1951. 1--1953. 3
17	上海海运学院建校委员会主任	蒲济生	1958. 8--1959. 4
18	上海海运学院副院长 (主持工作)	徐 健	1959. 4--1966
19	上海海运学院院长	杨 进	1978. 8--1979. 9
20	上海海运学院院长	陈嘉震	1981. 8--1983. 12
21	上海海运学院院长	陈希群	1986. 8--1991. 12
22	上海海运学院院长	沈康辰	1992. 1--1999. 5
23	上海海运学院副院长 (兼, 主持工作)	王宏彪	1999. 5--



1



3



4



5



6



7



9



10



13



14