



图书馆特藏

星海音乐学院图书馆

特藏文献

题名

《未被回答的问题》
姚锦新译

年度: 2000

类别: 试卷

捐赠者:

未被回答的问题

[美] 伦诺德·伯恩斯坦原著

姚锦新教授介绍

[谱例]

中央音乐学院 创研室
作曲系

1978. 11.

为深克

1. 音乐的音韵学
2. 音乐的句法
3. 音乐的语义学
4. 多种解释的趣味与危险
5. 二十世纪的危机
6. 大地的诗意

科普兰：钢琴变奏曲主题

(1) Grave ($\text{♩} = 48$)

f non legato, deliberamete *sff*

*) \circ = press down silently

(2) 巴赫平均律第一集，升C小调赋格曲主题

(3) 斯特拉文斯基：八重奏

(4) 拉威尔：西班牙狂想曲

(5) 印度：一段午临音乐中的一部分

(6) 泛音列

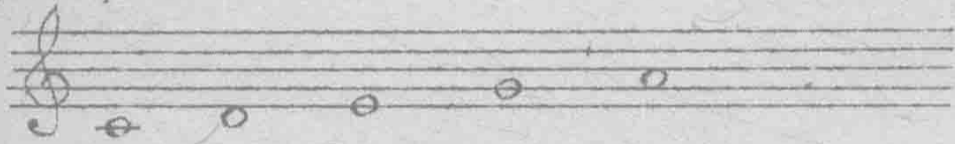
(7) 泛音列

2.

(8) 五声音阶之一



(9) 五声音阶之二



(10) 苏格兰五声音阶例



(11) 中国五声音阶例



(12) 非洲五声音阶例



(13) 日本五声音阶例



(14) 爪哇五声音阶例



(15) 泛音列



(16) 半音阶



(17) 哈佛大学校歌

Musical notation for (17) Harvard University Song, single staff, treble clef, 3/4 time, key of B-flat.

(18) 全上, 以八度进行

Musical notation for (18) Full octave, with octave progression, single staff, treble clef, 3/4 time, key of B-flat.

(19) 全上, 加五度进行

Musical notation for (19) Full octave, with fifth progression, two staves, bass and treble clefs, 3/4 time, key of B-flat.

(20) 全上, 加四、五度进行

Musical notation for (20) Full octave, with fourth and fifth progression, grand staff, 3/4 time, key of B-flat.

(21) 全上, 加三度进行

Musical notation for (21) Full octave, with third progression, grand staff, 3/4 time, key of B-flat.

(22) 哈佛大学校歌及其伴奏

Maestoso

Musical notation for (22) Harvard University Song and accompaniment, grand staff, 3/4 time, key of B-flat, includes dynamics like *f* and accents.

4.

哈佛大学校歌, 伴奏大量半音化

(23) *Andante amoroso*

(24) 莫扎特g小调交响曲, 第一乐章 主部
Allegro molto

Handwritten musical score system 1, measures 1-15. It features a grand staff with treble and bass clefs. The music includes a melodic line in the treble clef and a bass line in the bass clef. A dynamic marking 'v' is present above the first measure. A fermata is placed over the final measure of the system, which is numbered '15'.

Handwritten musical score system 2, measures 16-20. This system contains complex chordal textures with many accidentals. Dynamic markings 'sf' and 'f' are used. A fermata is placed over the final measure of the system.

Handwritten musical score system 3, measures 21-22. It continues the complex chordal textures. Dynamic markings 'sf' and 'f' are present. A fermata is placed over the final measure of the system, which is numbered '22'.

(25) 全上, 付部

Handwritten musical score system 4, measures 44-45. It features a melodic line in the treble clef and a bass line in the bass clef. A dynamic marking 'p' is present. A fermata is placed over the final measure of the system, which is numbered '45'.

Handwritten musical score system 5, measures 46-50. It continues the melodic and bass line. A dynamic marking 'p' is present. A fermata is placed over the final measure of the system, which is numbered '50'.

Handwritten musical score system 1, measures 55-59. The system consists of two staves. The upper staff is in treble clef with a key signature of one flat (B-flat). It begins with a piano (*p.*) dynamic and features a melodic line with slurs and accents. The lower staff is in bass clef with the same key signature, providing harmonic support with chords and moving lines. Measure numbers 55, 56, 57, 58, and 59 are indicated at the bottom of the system.

Handwritten musical score system 2, measures 60-64. The system consists of two staves. The upper staff continues the melodic line with slurs and accents. The lower staff features a more active bass line with eighth-note patterns. Measure numbers 60, 61, 62, 63, and 64 are indicated at the bottom of the system.

Handwritten musical score system 3, measures 65-69. The system consists of two staves. The upper staff has a melodic line with slurs and accents. The lower staff features a rhythmic bass line with eighth-note patterns. A *cresc.* (crescendo) marking is present in the right-hand part of the system. Measure numbers 60, 65, 66, 67, 68, and 69 are indicated at the bottom of the system.

Handwritten musical score system 4, measures 70-74. The system consists of two staves. The upper staff begins with a forte (*f*) dynamic and includes a trill (*tr*) in the second measure. The lower staff features a rhythmic bass line with eighth-note patterns. Measure numbers 65, 70, 71, 72, 73, and 74 are indicated at the bottom of the system.

Handwritten musical score system 5, measures 75-79. The system consists of two staves. The upper staff features a melodic line with slurs and accents. The lower staff features a rhythmic bass line with eighth-note patterns. Dynamics *sf* (sforzando) and *p* (piano) are marked in the right-hand part of the system. Measure numbers 70, 75, 76, 77, 78, and 79 are indicated at the bottom of the system.

Contrapuntal syntax

Handwritten musical score for piano, measures 74-80. The score is in G minor (one flat) and 4/4 time. It features a complex contrapuntal texture with multiple voices. Measure 74 has a handwritten 'p' (piano) dynamic. Measure 75 has a handwritten 'f' (forte) dynamic. Measure 76 has a handwritten '76' below the staff. Measure 80 has a handwritten '80' below the staff. There are various musical notations including slurs, ties, and accents. A handwritten note '山' (mountain) with an arrow points to a specific note in measure 75.

(26) 全上, 展开部

Handwritten musical score for piano, measures 100-103. The score is in G major (one sharp) and 4/4 time. It features a complex contrapuntal texture with multiple voices. Measure 100 has a handwritten 'f' (forte) dynamic. Measure 101 has a handwritten '100' below the staff. There are various musical notations including slurs, ties, and accents.

8.

Handwritten musical score system 1, measures 103-105. The system consists of two staves (treble and bass clef) with a brace on the left. The key signature has one flat (B-flat) and the time signature is 3/4. The music features a melodic line in the treble clef and a bass line in the bass clef. Measure 105 is marked with the number "105" below the staff.

Handwritten musical score system 2, measures 106-108. The system consists of two staves (treble and bass clef) with a brace on the left. The key signature has one flat (B-flat) and the time signature is 3/4. The music continues with melodic and bass lines.

Handwritten musical score system 3, measures 109-111. The system consists of two staves (treble and bass clef) with a brace on the left. The key signature has one flat (B-flat) and the time signature is 3/4. Measure 110 is marked with the number "110" below the staff. The system includes the annotation "DD VII 4/3" below the staff.

Handwritten musical score system 4, measures 112-114. The system consists of two staves (treble and bass clef) with a brace on the left. The key signature has one flat (B-flat) and the time signature is 3/4. Measure 115 is marked with the number "115" below the staff. The system includes the dynamic marking "f" (forte) above the treble staff.

Handwritten musical score system 5, measures 115-117. The system consists of two staves (treble and bass clef) with a brace on the left. The key signature has one flat (B-flat) and the time signature is 3/4. Measure 117 is marked with the dynamic marking "sf" (sforzando) above the treble staff.

Handwritten musical notation system 1, measures 115-120. It consists of two staves: a treble staff with a key signature of one flat and a 3/8 time signature, and a bass staff. The music features arpeggiated chords in the treble and a melodic line in the bass. Measure numbers 115, 120, and 125 are written below the bass staff.

Handwritten musical notation system 2, measures 120-125. It consists of two staves: a treble staff and a bass staff. The treble staff has a melodic line with slurs and accents. The bass staff has a rhythmic accompaniment. A dynamic marking 'f' is present below the bass staff.

Handwritten musical notation system 3, measures 125-130. It consists of two staves: a treble staff and a bass staff. The treble staff continues the melodic line, and the bass staff continues the accompaniment. A dynamic marking 'f' is present below the bass staff.

Handwritten musical notation system 4, measures 130-135. It consists of two staves: a treble staff and a bass staff. The treble staff features arpeggiated chords, and the bass staff features a melodic line. Measure number 130 is written below the bass staff.

Handwritten musical notation system 5, measures 135-140. It consists of two staves: a treble staff and a bass staff. The treble staff has arpeggiated chords, and the bass staff has a melodic line. Measure number 135 is written below the bass staff.

Handwritten musical score system 1, measures 1-4. The system consists of two staves. The upper staff is in treble clef with a key signature of one flat and one sharp (B-flat major/C minor). It begins with a dynamic marking of *fi* (fortissimo) and contains eighth and sixteenth notes with slurs and accents. The lower staff is in bass clef with the same key signature, featuring a steady eighth-note accompaniment. Measure numbers 1, 2, 3, and 4 are indicated at the top of the system.

Handwritten musical score system 2, measures 5-8. The system consists of two staves. The upper staff continues the melodic line with slurs and accents, including a dynamic marking of *p* (piano) in measure 7. The lower staff continues the accompaniment. Measure numbers 5, 6, 7, and 8 are indicated at the top of the system.

Handwritten musical score system 3, measures 9-12. The system consists of two staves. The upper staff features a melodic line with slurs and accents. The lower staff continues the accompaniment. Measure numbers 9, 10, 11, and 12 are indicated at the top of the system.

Handwritten musical score system 4, measures 13-16. The system consists of two staves. The upper staff continues the melodic line with slurs and accents. The lower staff continues the accompaniment. Measure numbers 13, 14, 15, and 16 are indicated at the top of the system.

Handwritten musical score system 5, measures 17-20. The system consists of two staves. The upper staff continues the melodic line with slurs and accents, including a dynamic marking of *p* (piano) in measure 19. The lower staff continues the accompaniment. Measure numbers 17, 18, 19, and 20 are indicated at the top of the system.

Handwritten musical score for the first system, measures 145-150. The system consists of two staves. The upper staff contains a melodic line with eighth and sixteenth notes, some beamed together, and slurs. The lower staff contains a bass line with similar rhythmic values. Measure 150 is marked at the bottom.

Handwritten musical score for the second system, measures 151-155. The system consists of two staves. The upper staff features chords and some melodic fragments. The lower staff has a bass line with chords. Dynamic markings include *p*, *f*, and *sf*. Measure 155 is marked at the bottom.

Handwritten musical score for the third system, measures 156-160. The system consists of two staves. The upper staff has chords and some melodic lines. The lower staff has a bass line with chords. Dynamic markings include *sf*. Measure 160 is marked at the bottom.

Handwritten musical score for the fourth system, measures 161-165. The system consists of two staves. The upper staff has chords and some melodic lines. The lower staff has a bass line with chords. Dynamic markings include *p*. Measure 165 is marked at the bottom.

Handwritten musical score for the fifth system, measures 166-170. The system consists of two staves. The upper staff has a melodic line with slurs. The lower staff has a bass line with chords. Dynamic markings include *p*. Measure 170 is marked at the bottom.

12.

(27) 全上, 第二乐章展开部中

Handwritten musical score for (27) in G major, 3/4 time. The score consists of two staves. The upper staff features a melodic line with eighth and sixteenth notes, including slurs and accents. The lower staff provides a harmonic accompaniment with chords and moving lines. A dynamic marking of *sf* is present in the lower staff.

(28) 之一. 全上, 第三乐章小步舞曲

Minnetto
Allegro

Handwritten musical score for (28) 之一 in G major, 3/4 time. The score consists of two staves. The upper staff has a melody with slurs and accents, marked with *sf*. The lower staff has a bass line with slurs and accents, marked with *f*. The tempo is marked *Allegro*.

(28) 之二.

Handwritten musical score for (28) 之二 in G major, 3/4 time. The score consists of two staves. The upper staff has a melody with slurs and accents, marked with *p*. The lower staff has a bass line with slurs and accents, marked with *p*. Measure numbers 36 and 39 are indicated at the bottom.

(29) Finale. 全上, 末乐章主部主题
Allegro assai.

Handwritten musical score for (29) in G major, 3/4 time. The score consists of two staves. The upper staff has a melody with slurs and accents, marked with *p* and *f*. The lower staff has a bass line with slurs and accents, marked with *p* and *f*. The tempo is marked *Allegro assai*.

Ambiguity 2017

2017.12.20

2017.12.20

(30)之一: 全上, 展开部开始处

Handwritten musical score for (30) Part 1, measures 125-130. It features a grand staff with treble and bass clefs. The music is in a key with one flat (B-flat major or D minor). Dynamics include 'f' (forte) and 'sf' (sforzando). There are various accidentals and articulation marks.

Handwritten musical score for (30) Part 1, measures 130-135. It continues the grand staff notation with treble and bass clefs. Dynamics include 'sf' and 'f'. The notation shows complex harmonic structures with many accidentals.

(30)之二: 高潮处

Handwritten musical score for (30) Part 2, measures 181-185. It features a grand staff with treble and bass clefs. The music is highly chromatic and dense, with many accidentals. A dashed line above the staff indicates a melodic line. Dynamics include 'ff' (fortissimo).

Handwritten musical score for (30) Part 2, measures 185-188. It shows the continuation of the grand staff notation with treble and bass clefs. Dynamics include 'ff'. The notation is very dense with many accidentals.

(31) 贝多芬作品31号之三, 降E大调钢琴奏鸣曲第一乐章开始处

Allegro (♩ = 116)

ri - tar - dan - do

Handwritten musical score for (31) Beethoven's Op. 31 No. 3, measures 1-5. It features a grand staff with treble and bass clefs. The music is in E-flat major. Dynamics include 'p' (piano) and 'espr.' (espressivo). There are lyrics in Italian: "PLEASE... PLEASE... I IMPLORE YOU... I'LL". The tempo is marked "Allegro" with a quarter note equal to 116 beats per minute.

a tempo
semplice

DO ANYTHING IF... (and comes the reply) YES; BUT ONLY ON CERTAIN CONDITIONS.

PLEASE... PRETTY PLEASE... IF YOU DON'T... ON THE OTHER HAND IF YOU DO...

(We receive the same answer) f (New pleading methods)

(wheedling...) etc.

贝多芬：第八交响曲
(32) Allegro vivace e con brio