

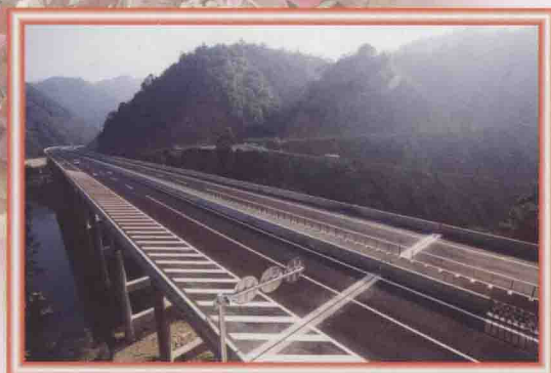
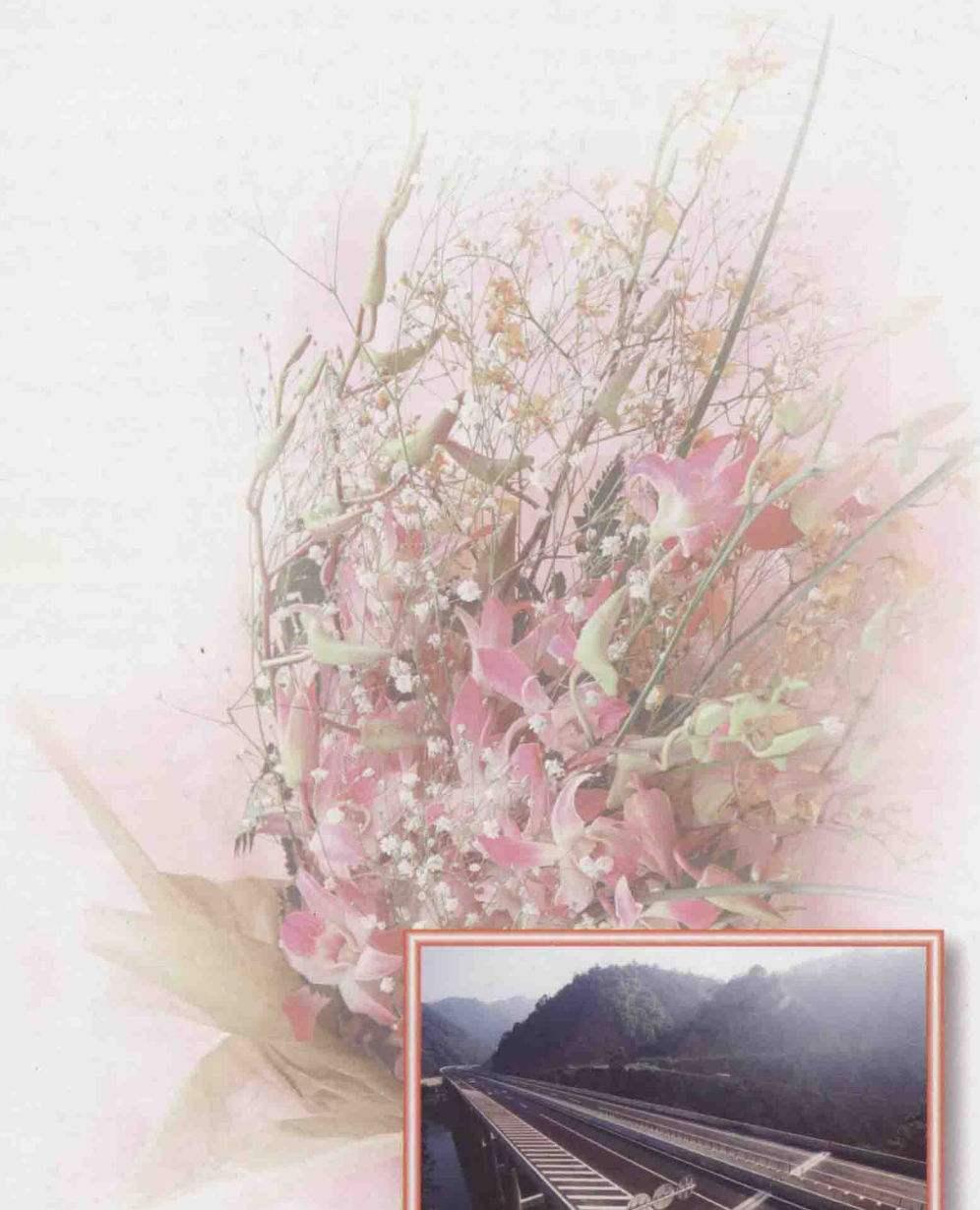
An aerial photograph of a multi-lane highway that curves gracefully through a lush, green valley. The road is dark asphalt with white lane markings. The surrounding landscape is densely forested with green trees. The sky above the road is hazy and bright, creating a sense of depth and atmosphere. The overall composition is dynamic, following the curve of the road from the bottom left towards the top right.

# 腾龙出峡

——漳龙高速公路龙岩段通车专辑

● The dragon flies out of the valley

献给关心支持参与漳龙高速公路龙岩段建设的人们





# 序

## 【腾龙出峡】

张燮飞 袁荣祥

“红雨随心翻作浪，青山着意化为桥”。

2002年1月19日漳龙高速公路龙岩段顺利建成通车。这是闽西公路建设史上的又一座丰碑。

闽西，是当年的中央苏区，山高谷狭，路隘林深。“红旗跃过汀江，直下龙岩上杭”，老一辈无产阶级革命家在此留下了光辉的足迹。

闽西，又是龙的故乡。龙崆洞、龙津河、龙湖、龙门……龙的美传久远。这里地灵人杰，物产丰饶，是福建省重点侨区、矿区、林区和旅游区，是构筑海峡西岸经济繁荣带的重要组成部分。然而，多少年来，横亘在这里的重重关山，如同一把把铁锁，使闽西这条巨龙迟迟无法腾飞。打通山门求发展，已成为一代代闽西人的渴望。如今，在这世纪之初，龙岩的第一条高速公路——漳龙高速公路龙岩段已经开通。从此，天险屏障变坦途，山门敞开天地宽，闽西的区位优势日益凸现。

漳州至龙岩高速公路是福建省重点建设项目，与福厦、厦漳高速公路相连，构成福建省现代化交通运输网络。作为福建构建“山海协作通道、对内连接通道、对外开放通道”等三大战略通道和建设“闽粤赣边交通枢纽”的重要一环，漳龙高速公路对加强龙岩与厦门特区及福建沿海开放城市的联系，改善龙岩市投资环境，吸引和活跃人流、物流、资金流和信息流，促进生产要素优化组合，加快闽西经济发展，具有十分重要的意义。

漳龙高速公路龙岩段全长42.4公里，概算投资22.45亿元。第一、二期工程新祠至龙门段于1996年8月开工，2000年1月30日建成通车。三期工程和溪至新祠路段，1999年6月1日正式开工，2001年12月27日全线建成并交工验收。

“半空横铁索，千丈跨虹霓”。漳龙高速公路龙岩段是一项艰难工程，深挖高填，线弯坡陡，是典型的山区高速公路。特别是三期工程，在深山峡谷布线，桥隧相连，构造物占该段的60%以上，最高桥墩达81米，最长隧道达2640米，工程艰巨程度全省、全国罕见；它又是一项科技工程，有21家科研单位先后参与工程建设的科技攻关、课题研究和施工指导，开展了6项隧道、高架桥及路面重要科研课题研究与试验，采用了土工格栅、隧道二衬整体式台车等20余项新技术、新材料、新工艺；它也是一项环保工程，做到了边建设、边治理、边绿化美化，最大限度地保持了原有地物地貌，成为一条环保路、风景线；它还是一项效益工程，通过工程招投标、优化设计和建设控制，节省概算投资约4亿元。全段通车后，比原国道缩短20多公里，节约行车时间约1小时，具有显著的社会和经济效益。

腾龙出峡谷，飞驰向东南。路，是铺在大地上的碑；碑，是立在人们心中的路。漳龙高速公路的建设，凝聚了闽西285万人民的智慧和力量，饱含着各级领导、专家的关心和爱护，得到了社会各界的支持和帮助，倾注了建设者的心血和汗水，将永载闽西发展的史册。



# The dragon flies out of the valley

Zhang xie fei Yuan rong xiang

# Preface

*"Crimson rain swirls in waves under our will, Green mountains turn to bridges at our wish."*

On 19th, January 2002, the Longyan section of Zhanglong Express Way will be completed and available for passing. This will add another monument to Minxi road construction history.

Having been one of the central Soviet areas in times of civil war, Minxi has a very tough natural environment. Here you can find high mountains, steep valleys, narrow roads and dense forests. In another poem, Mao Tsetung said, "Red flag fluttering over the other side of Ting River. Red army straight to Lungyen and ShangHang." Many old proletarian revolutionaries have left their glorious legends here.

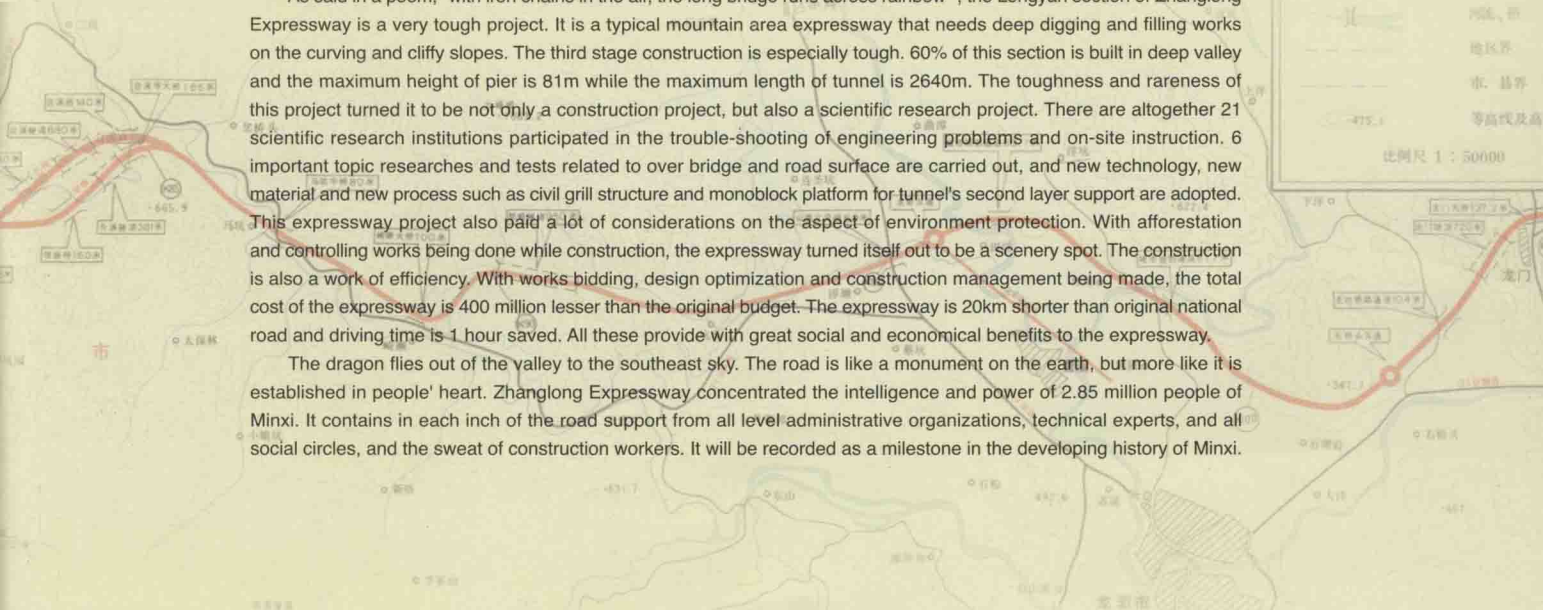
Minxi is also called the hometown of dragon. Legends about dragon pass by from generation to generation. Some places, such as Longkong dong (Dragon Cave), Longjin River (Dragon Saliva River), Long Lake (Dragon Lake), and Longmen (Dragon Gate) etc., are named after dragon. This remarkable place produces not only outstanding people, but also rich natural resources. It has big population of returned overseas Chinese and their relatives and it is also a key area for mining, forestry, and touring in Fujian province. But for so many years, the mountains lying in this area are just iron locks blocking this giant dragon from flying to the sky. The wish for breaking these blocks has become the common desire for generations of local people. Now, at the beginning of the new millennium, the Longyan section of Zhanglong Express Way, which is the first expressway of Longyan, has been completed and available for use. We believe this expressway is not only a road that conquered natural barriers, but it will also enlarge the eye field of local people and gradually bring with it tremendous advantages to local development.

The expressway from Zhangzhou to Longyan is one of the key construction projects of Fujian province. It connects to Fuxia and Xiazhang Expressway and forms with them the modern transportation networks of Fujian province. As an important aspect of the three strategic paths, which are "path for the cooperation between mountain area and beach area, path for internal connection and path for opening", and the construction project of "transportation interchange of Fujian, Guangdong and Jiangxi provinces", Zhanglong Expressway is of vital importance for enhancing the connection between Longyan, Xiamen Special District and other opening cities of the beach area of Fujian province. It can also improve the investing environment of Longyan city, attract people and activate the flow of resources, capital and information, promote the optimization of production factors, and accelerate the economical development of Minxi area.

With a budget of RMB2.245 billion and a total length of 42.4km, the construction of the first and second stage of Zhanglong Expressway, starting from Xinci and ending at Longmen, has been started in August 1996 and completed on January 30, 2000. The third stage, which starts from Hexi and ends at Xinci, has been started on June 1st, 1999, has been completed and ready for completion inspection on December 27th, 2001.

As said in a poem, "with iron chains in the air, the long bridge runs across rainbow", the Longyan section of Zhanglong Expressway is a very tough project. It is a typical mountain area expressway that needs deep digging and filling works on the curving and cliffy slopes. The third stage construction is especially tough. 60% of this section is built in deep valley and the maximum height of pier is 81m while the maximum length of tunnel is 2640m. The toughness and rareness of this project turned it to be not only a construction project, but also a scientific research project. There are altogether 21 scientific research institutions participated in the trouble-shooting of engineering problems and on-site instruction. 6 important topic researches and tests related to over bridge and road surface are carried out, and new technology, new material and new process such as civil grill structure and monoblock platform for tunnel's second layer support are adopted. This expressway project also paid a lot of considerations on the aspect of environment protection. With afforestation and controlling works being done while construction, the expressway turned itself out to be a scenery spot. The construction is also a work of efficiency. With works bidding, design optimization and construction management being made, the total cost of the expressway is 400 million lesser than the original budget. The expressway is 20km shorter than original national road and driving time is 1 hour saved. All these provide with great social and economical benefits to the expressway.

The dragon flies out of the valley to the southeast sky. The road is like a monument on the earth, but more like it is established in people's heart. Zhanglong Expressway concentrated the intelligence and power of 2.85 million people of Minxi. It contains in each inch of the road support from all level administrative organizations, technical experts, and all social circles, and the sweat of construction workers. It will be recorded as a milestone in the developing history of Minxi.





石崆山的峭崖记得  
溪柄溪的飞瀑记得  
一条跨世纪的大道  
凝聚了多少热望与期盼  
倾注了多少关怀与厚爱  
当21世纪的车轮  
穿过高山越过峡谷  
那一声声亲切的叮咛  
仍在这雄奇的山水间  
在这时光的隧道里  
久久回响……



Support from administrative leaders



Support from administrative leaders





Support from administrative leaders



Support from administrative leaders



高山敞开心扉  
深涧化作虹霓  
崎岖成为坦途  
断岩吟就诗句  
站在岁月的光影里回望  
我们终于发现  
没有比心更高的山  
没有比腿更长的路

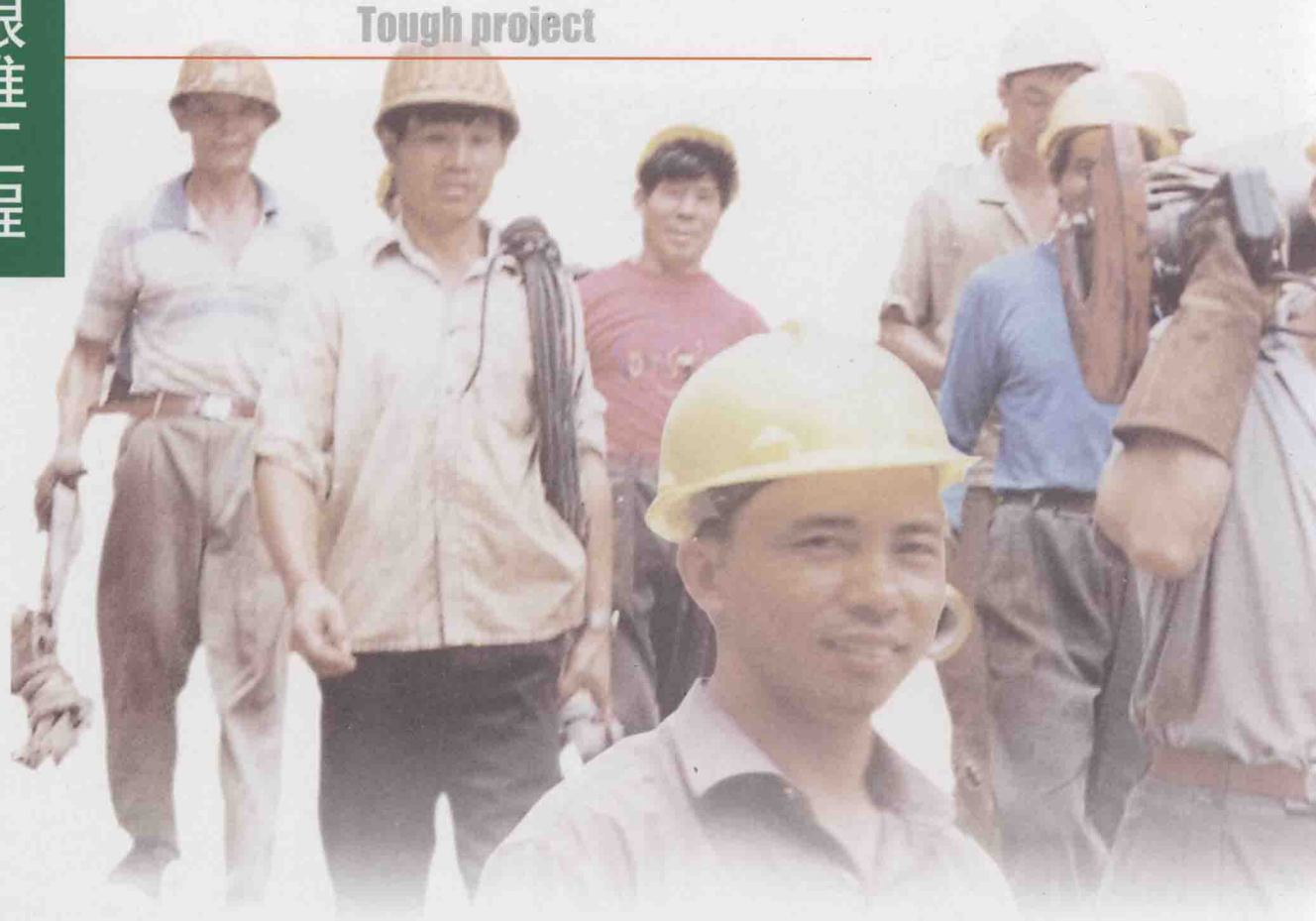


**Tough project**



**Tough project**





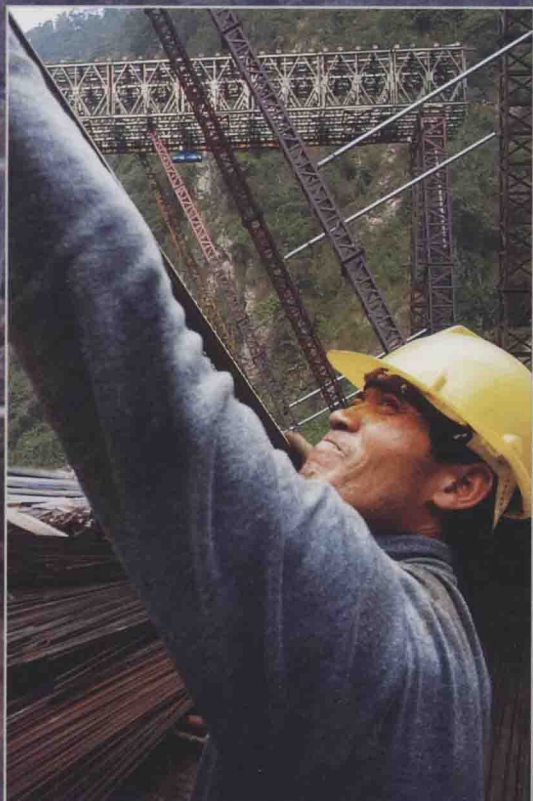
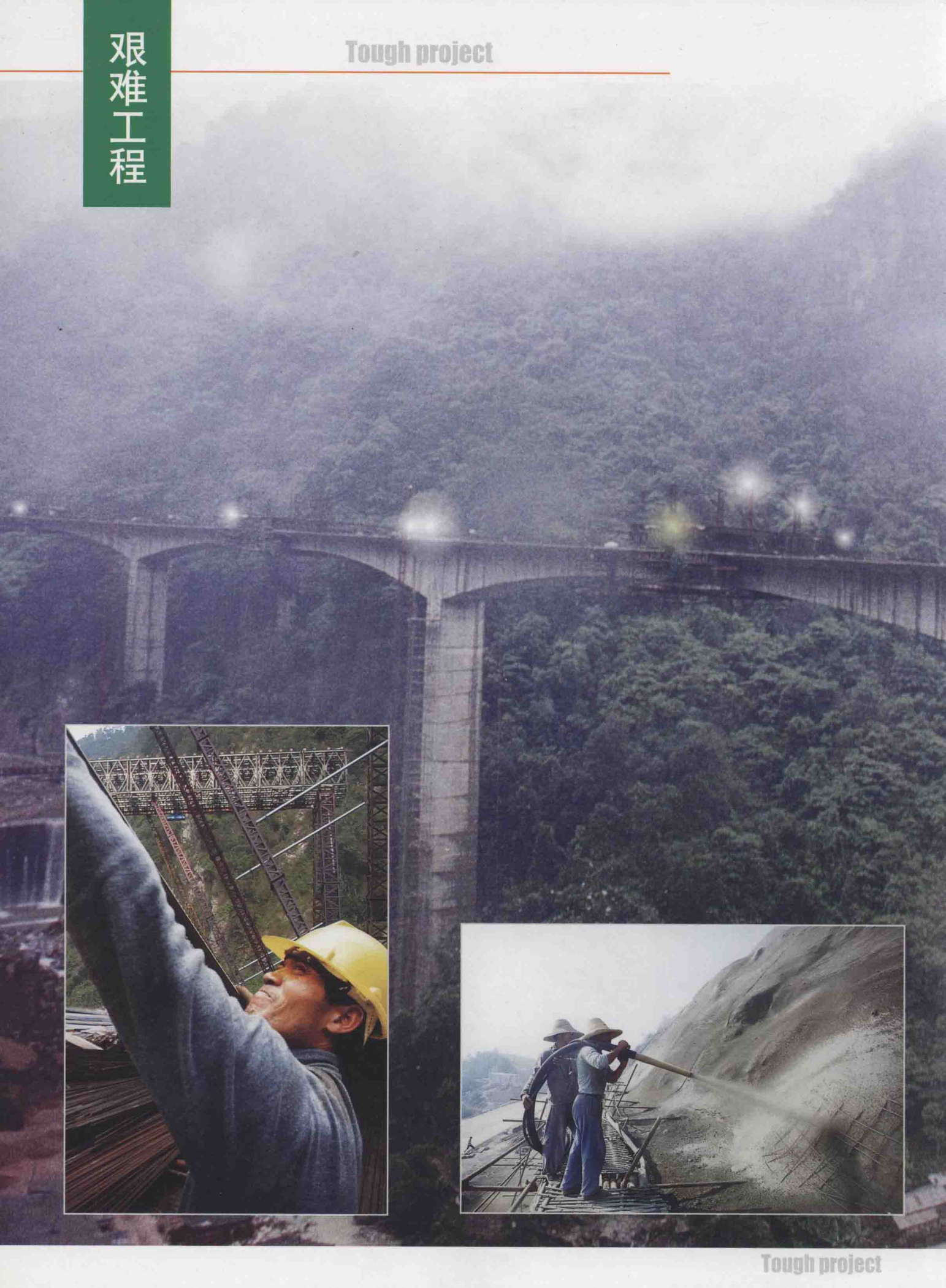


**Tough project**



**Tough project**





**Tough project**



**Tough project**









