

ARTSSCHOOL

專業學校

ARTS SCHOOL

# | 現代藝術學院 | 附屬中等專業學校 |

JILIN COLLEGE OF THE ARTS MODERN ARTS SCHOOL & ATTACHED MIDDLE SCHOOL





| 吉林藝術學院現代藝術學院 | 吉林藝術學院附屬中等專業學校 |

# JILIN COLLEGE OF THE ARTS MODERN ARTS SCHOOL

## JILIN COLLEGE OF THE ARTS ATTACHED MIDDLE SCHOOL

吉林藝術學院現代藝術學院、吉林藝術學院附中坐落在北國文化名城——吉林省長春市。這裏既是夏日的避暑勝地，又是冬季冰雪運動的最佳場所；這裏既有偉岸質樸的長白秀色，又有清新旖旎的淨月風光。學院地處街道繁華、交通便利的建設廣場，它隸屬於吉林藝術學院，是學院總體辦學格局的重要組成部分。

現代藝術學院、附中前身爲吉林省戲曲學校。2000年，經吉林省政府決定，戲曲學校與吉林藝術學院合并，改名爲吉林藝術學院高等職業學院。原吉林藝術學院中專部學生全部納入高職學院，成立吉林藝術學院附屬中等專業學校（簡稱附中）。2005年，吉林藝術學院高等職業學院更名爲吉林藝術學院現代藝術學院，開始招收本科學生。辦學體制逐步向“大本科、小中專”過渡。

現代藝術學院、附中下設六個教學系部：音樂系、美術系、戲劇系、舞蹈系、京劇教學部、雜技教學部。學院現有專任教師139人，其中，具有副高級以上職稱的教師38人，講師68人，平均年齡37歲，是一支年輕而有活力的隊伍。具有博士、碩士學位的中青年骨幹教師更是提高了教師隊伍的整體素質。此外，學院還長期聘請外籍教師來校任教，不僅使我院的師資隊伍錦上添花，同時也形成了中西合璧的育人氛圍。

學院現有學生1700餘名。辦學的總體定位是：重點發展本科，穩定發展中專，是一所多學科融合，多層次互補，多功能兼容的高等藝術學府。學院建立了以能力培養爲基礎，以職業需求爲導向，以培養高素質藝術人才爲目標，構建教學、科研、創作三位一體的良好互動人才培養模式。近年





來，學院的演展和科研創作出現了繁榮和興旺的勢頭，創作出一批藝術品位較高、在省內外產生較大影響的優秀藝術作品，提高了學院的知名度和美譽度。

學院占地面積約38919.35平方米，建築面積31011.52平方米，教學空間約20000平方米。壯觀的教學樓，高雅的辦學環境，專業的電化教學設備及近六萬餘冊的圖書、音像資料能夠充分滿足教學的需要。此外，學院還擁有三個學生公寓，一個供學生實踐的演出劇場，一個供美術學生實習的北戴河寫生基地以及現代化的電教中心及網絡中心。

現代藝術學院、附中辦學始終遵循藝術教育規律，以辦“讓人民滿意的教育”為基本宗旨，堅持以教學為中心，以教學質量為生命線，以培養德、智、體、美全面發展的應用型、復合型藝術人才為核心，以打造德藝雙馨藝術人才為最高目標。秉承“博學、求真、至善、盡美”的校訓思想，踐行“尊重藝術個性，完善社會人格”的教育理念，堅持走規模、結構、質量、效益協調發展的道路，逐步構建面向21世紀的新型教學體系和人才培養模式。

蓬勃發展中的現代藝術學院、附中，正以嶄新的、現代化的風采，迎接來自五湖四海的賓朋和四面八方的藝術學子。



## A Survey of College

Jilin College of The Arts Modern Arts School, Jilin College of The Arts Attached Middle School lies on the famous cultural northern city--- Jilin Changchun, the city is not only a summer retreat, but also a best skiing site; not only a beautiful Changbai mountain but also a nice Jingyue scenery. The college lies on Jianshe square which is thriving and convenient, it belongs to Jilin College of The Arts, and it is an important part of the general teaching system.

Original, Modern Arts School Attached Middle School named Drama School. In 2000 Jilin province government approved that drama school can combine with Jilin College of The Arts and change the name: Jilin College of The Arts Attached Higher Vocational School. And the students of Middle School Department all belong to Higher Vocational School. The new name is Jilin College of The Arts Attached Middle School. In 2005, Jilin College of The Arts Attached Middle School change the name is: Modern Arts School and begin to admit undergraduate. The teaching system is changed" depend on undergraduate course and attached middle school".

Modern Arts School, Attached Middle School sets up six teaching departments: Music Department; Art Department; Drama Department; Dancing Department; Beijing Opera Department; Acrobatics Department in

學院領導班子 左起: 副書記程艷杰 副院長李寶祥 院長田雨春 書記劉國棟 副院長徐智明  
Leaders of college: vice-secretary:Cheng Yanjie vice-president:Li Baoxiang president:Tian Yuchun secretary:Liu Guodong vice-president: Xu Zhiming



# JILIN COLLEGE OF THE ARTS MODERN ARTS SCHOOL JILIN COLLEGE OF THE ARTS ATTACHED MIDDLE SCHOOL

college, there are 139 specialized teachers. Including, 38 vice-senior professional title teachers, 68 lecturers, the average age is 37; it is a young and active teaching group. Teachers who have doctor, post graduate degrees improve our teaching qualities. Besides, the college invited foreign teachers, not only improving our teaching system, but forming a new teaching atmosphere at the same time. Modern Arts School has more than 1700 students. The general position is: *the most important development is undergraduate course and steadily development is middle school*, this is a high arts school which has many subjects, multiechelon complements, many functions. The college bases on improving ability, the needs of profession, and teaching high-quality arts students as a teaching aim, to build a beneficial interaction training pattern. These years, the college's play and scienceresearching appears a prosperous situation, creating higher hearsay plays to improve the popularity and good reputation.

The college covers 38919.35 square meters, building area is 31011.52 square meters, and teaching space is 20000 square meters, the great teaching buildings ;the nice learning environment, specialized electric teaching equipment and over60000 books. music materials can be satisfied our teaching needs. In addition, the college has three students' apartments, one play theatre for students, and one painting foundation for arts students in Beidaihe and modern electric teaching centre and web centre.

Modern Arts School, Attached Middle School observe artteaching rules, the basic aim is : *satisfied education for people ,sticking teaching as centre, teaching quality as a lifeline. Alldeveloped art talents at the core. To train both morality and learning students as the highest goal. Carrying on our school motto: accumulate great learning; seek after truth; achieve the highest level; raise to perfect. Holding art personality in esteem perfect social characters* as the college teaching mind. insisting on coordinated development way of scale, structure, quality, benefit, to build a new teaching system and to train talent pattern to face 21 century.

Development vigorously of Modern Arts School, Attached Middle School is displaying new modern fine qualities to welcome friends and students from all over the world.



# Educational Pattern 辦學格局

## 現代藝術學院辦學格局

### 美術系

本科

廣告設計與策劃

裝飾工程設計

人物造型與藝術攝影

專科

平面廣告設計

裝飾工程設計

### 音樂系

本科

幼兒藝術教育

現代音樂技術教育

專科

音樂表演

### 戲劇系

本科

表演與主持

藝術形象設計

專科

影視表演

播音與主持藝術



## 附中辦學格局

### 音樂系

音樂表演（三年制/六年制）

音樂學（三年制）

作曲與作曲技術理論（六年制）

### 戲劇系

影視表演（三年制）

播音與主持藝術（三年制）

### 舞蹈系

舞蹈表演（六年制）

### 京劇部

京劇表演（四年制）

音樂表演（四年制）

### 雜技部

雜技表演（四年制）

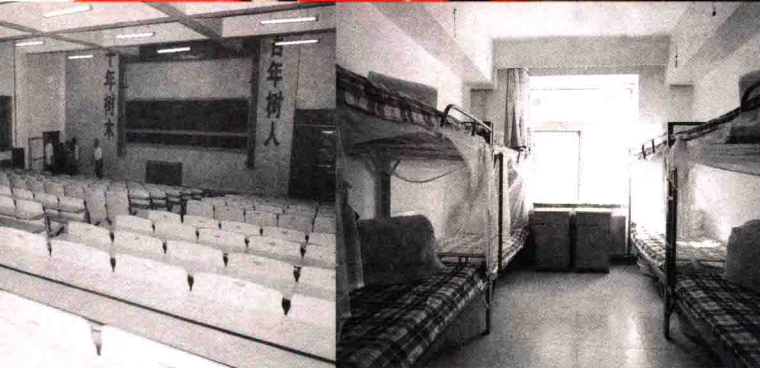




# Teaching Environment

教學環境





學生食堂  
Students' Dining Room

階梯教室  
Terrace Classroom

學生寢室  
Students' Apartment

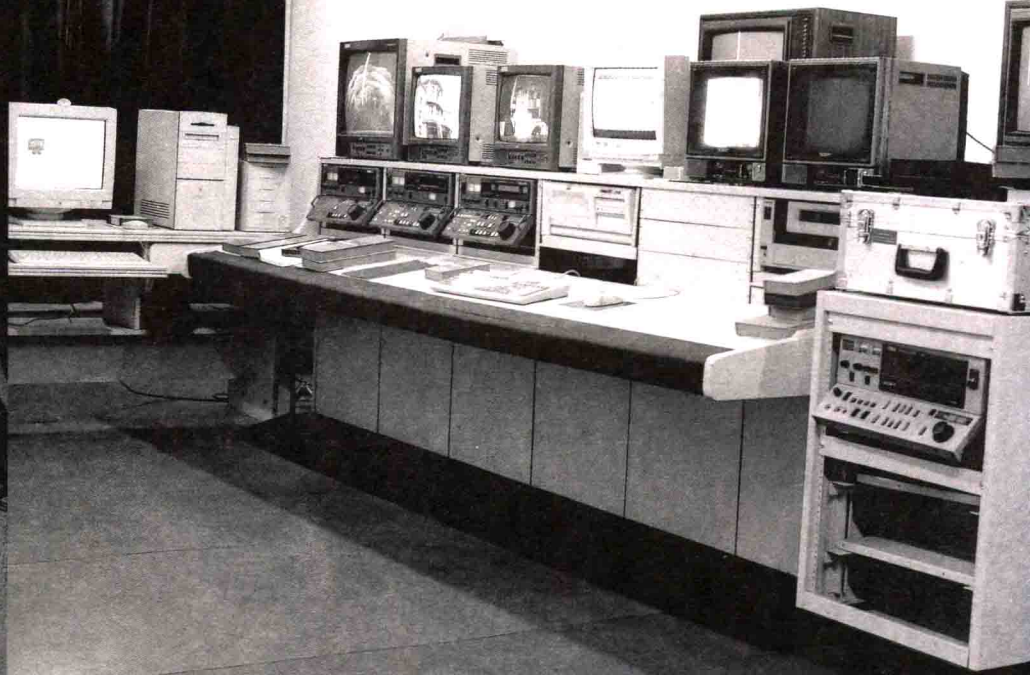
劇場  
Theater



校園綠地  
Campus Grass



MIDI工作室  
MIDI Studio



音像編輯工作室  
Audiovisual Edition Studio



音像采集工作室  
Audiovisual Collection Studio



錄音棚  
Studio



網絡中心  
Web Centre



籃球場  
Basketball Playground





音樂廳  
Music Hall

试读结束：需要全本请在线购买：[www.ertongbook.com](http://www.ertongbook.com)