

中國當代藝術家畫庫

張大石頭



中國畫報 出版社

TREASURES OF CONTEMPORARY
CHINESE PAINTING

中國當代藝術家畫庫



《中國當代藝術家畫庫》

顧問	吳作人	吳冠中
	劉開渠	王朝聞
	古元	羅工柳
	張仃	王琦
	靳尚誼	黃胄
	張廣聯	黃祖安
	錢紹武	林凡
	楊力舟	

編輯部主任	韓茂堂
副主任	施慶華

編委	李來舉	李壽生
	李慈秀	胡守文
	江文	諸迪
	趙海壽	李心奇
		孫樹梅

編譯	王華
----	----

出版 中國畫報出版社
印刷 一二零六工廠
工藝 高建萍
發行 新華書店北京發行所
ISBN 7-80024-181-5/J.182
定價 58元



畫家像 Zhang Rock

Zhang Zhimin is another name of Zhang Rock, styled himself Melted. He was born in Yangxin, Shangdong Province on February 19th, 1956. He studied successively in the fine arts section of the Shandong Art School, the fine arts department of the Shandong Art College and the traditional Chinese painting department of the Zhejiang Art College. He is a painter with a strong character and a wide cursory reading. He is a deputy director of the fine arts department of the Shandong Art College. His artistic creation is mainly the landscape painting and concurrently some calligraphy and seal cutting. His works have taken part many times in the exhibitions at home and abroad and published on newspapers and periodicals. Some of his works have been collected by the Great Hall of the People in Beijing, the Taishan Art Museum, and cultural organizations and experts of the United States, Canada and Japan. His brief biography has been included in different dictionaries of the Chinese masters of painting and calligraphy.

In recent years his landscape paintings often bear a "dhyana flavour", and people call them "dhyana paintings". He has published his *An Album of Paintings by Zhang Zhimin* and *An Album of Paintings Explaining Ancient Poems*.

張大石頭，又名張志民，號化了。1956年2月19日生于山東陽信。先后就讀于山東藝術學校美術科、山東藝術學院美術系、浙江美術學院中國畫系，是一位個性突出，涉獵廣泛的畫家。現執教于山東藝術學院，任美術系副主任。創作以山水畫為主，兼及書法、篆刻。其作品多次參加國內外畫展并在報刊、雜誌上發表。有多幅作品被北京人民大會堂、泰山藝術博物館和美國、加拿大、日本等國文化機構、專家收藏。個人傳略曾被輯入多種中國書畫名家大辭典。近年，山水畫創作常帶有“禪意”，人稱“禪畫”。著有《張志民山水畫集》、《古詩詞注釋畫集》。

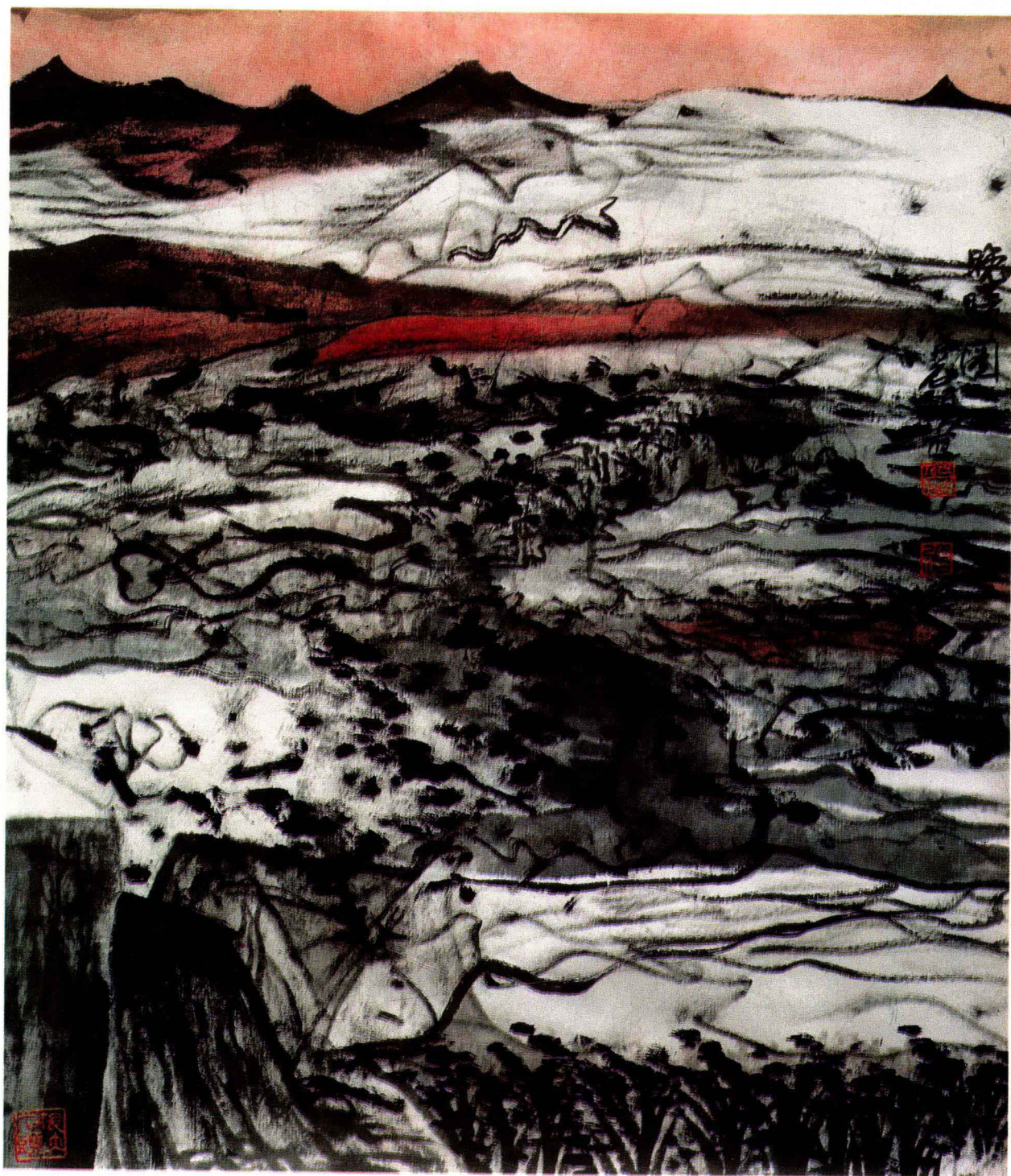
封面：帶着入山符進山的人們(69×69cm)

Front cover: *People with Magic Figures*

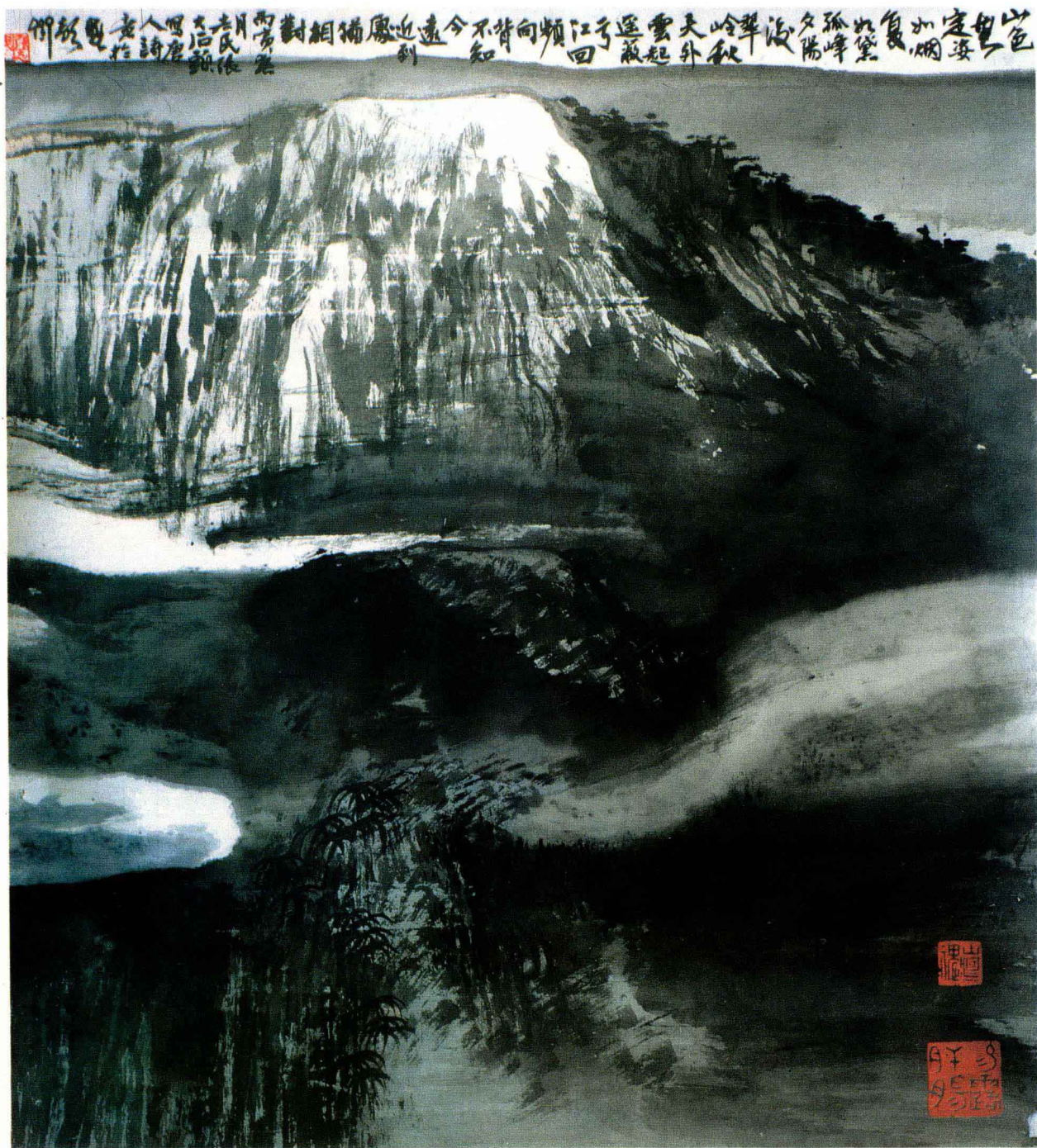


律動(69×69cm)

A Regular Move



晚晴(69×69cm)
Clear Evening



雲嶺賦(69×69cm)

Mountain Ranges in Clouds



秋夜(69×69cm)
Autumn Night



山水與狗(69×69cm)
Landscape and Dog



山水賦第十六圖(69×69cm)

Landscape Verse 16



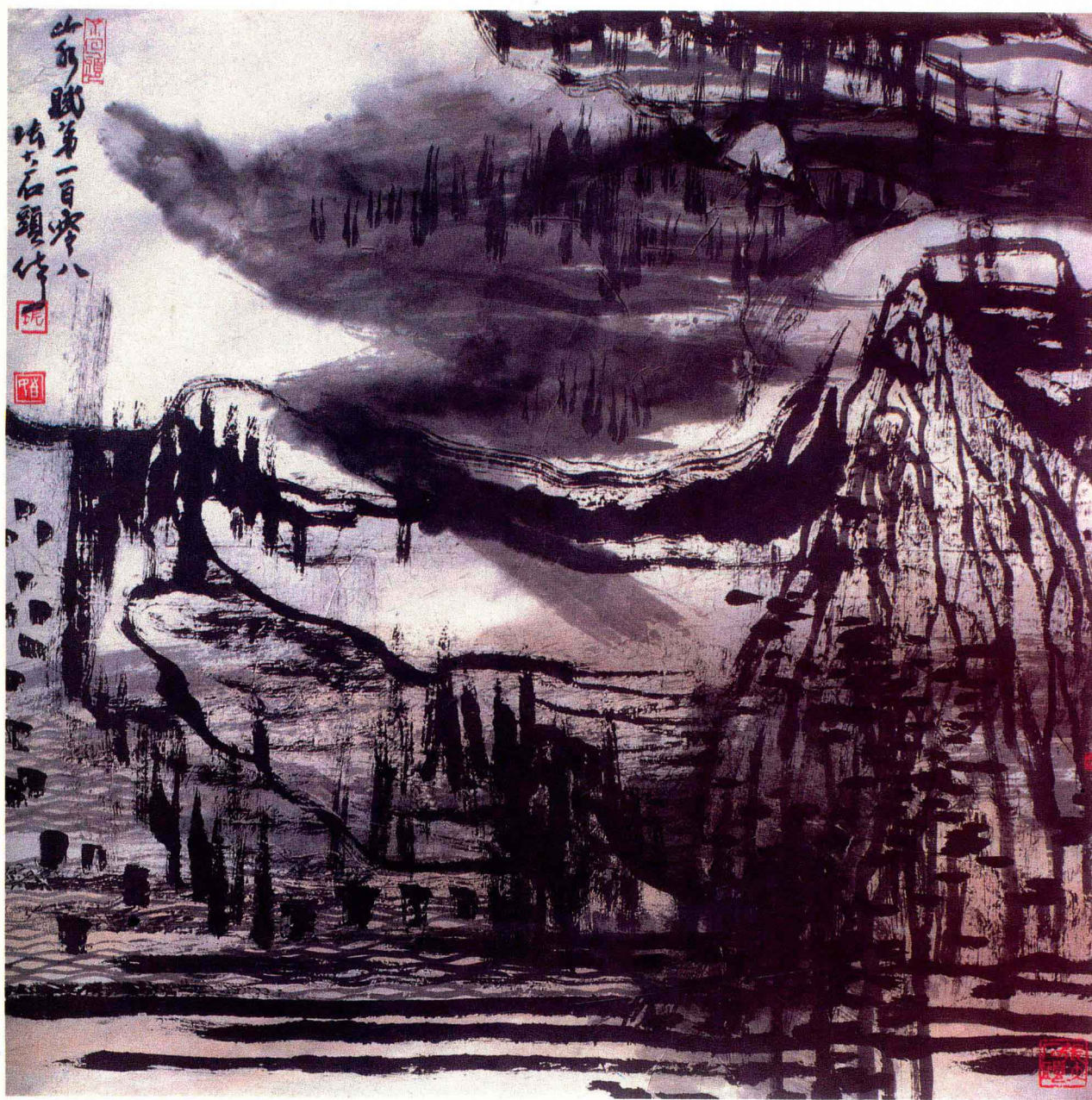
山水賦第一百圖(50×69cm)

Landscape Verse 100



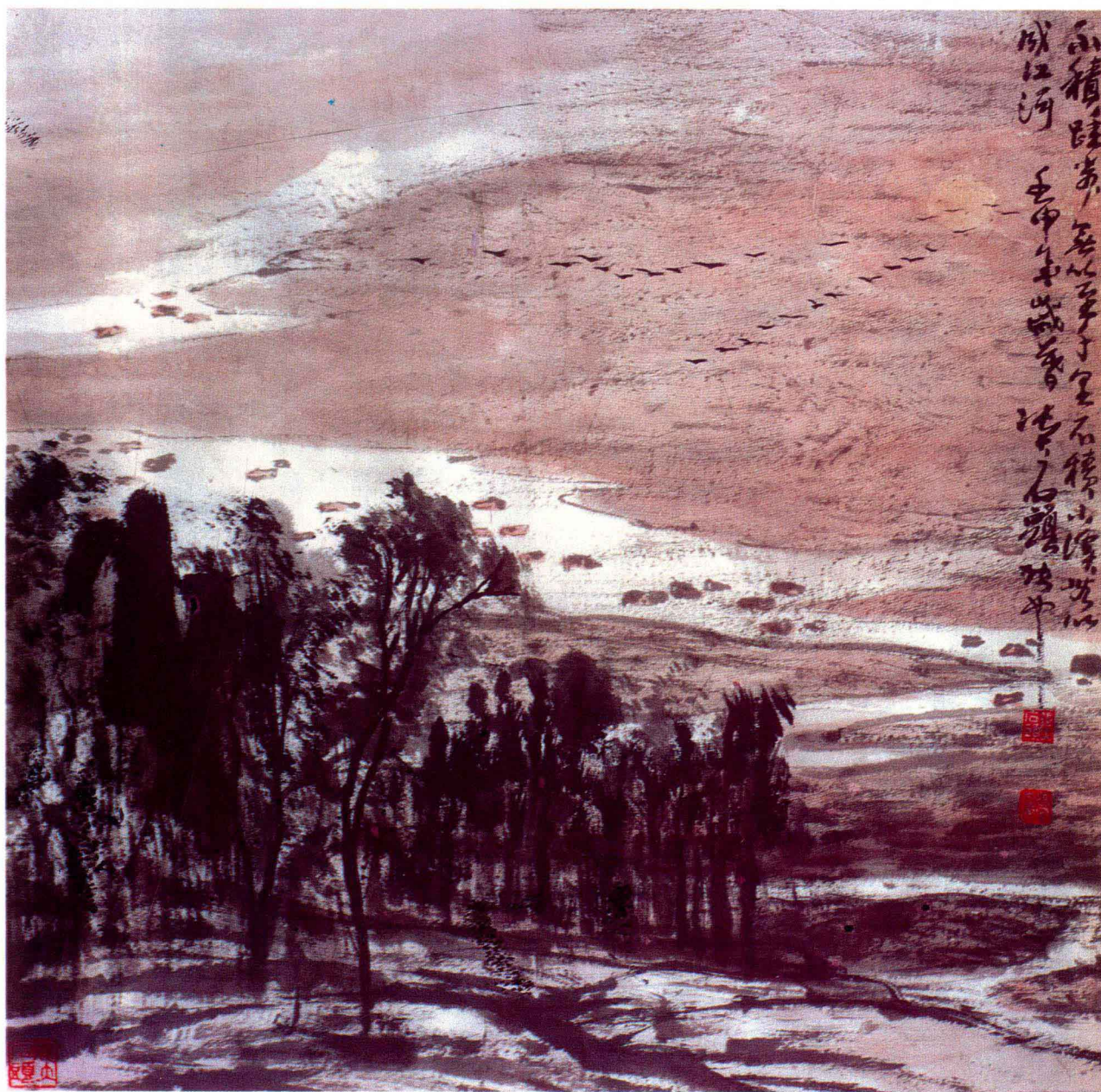
山水賦第十九圖(69×69cm)

Landscape Verse 19



山水賦第一百零八圖(69×69cm)

Landscape Verse 108



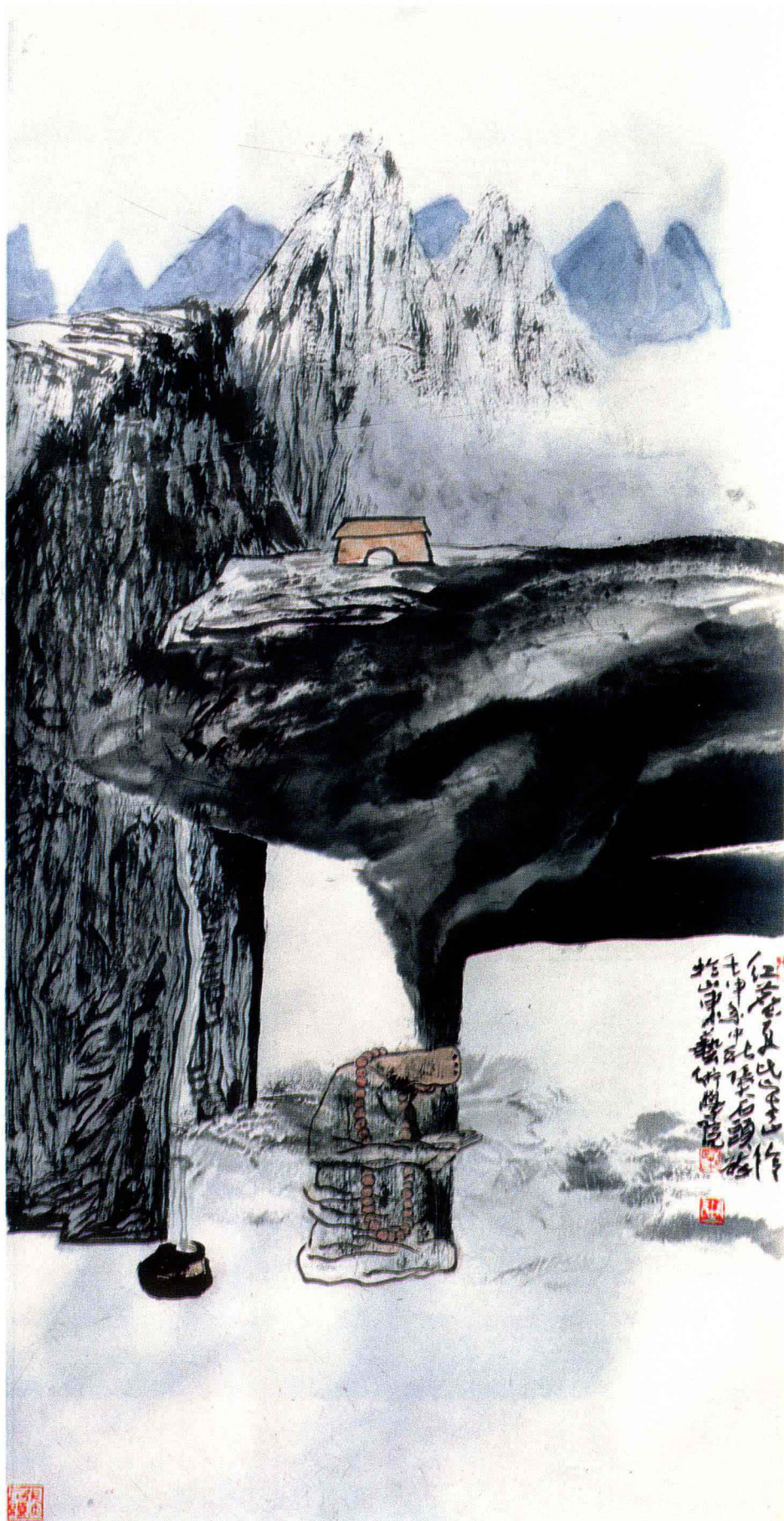
山水賦第一百零一圖(69×69cm)

Landscape Verse 101



晴天雨(69×45cm)

Rain from the Blue



參禪(138×69cm)
Deep Meditation



對話(69×45cm)

A Dialogue



苍山赋(69×69cm)

Verdant Hills