



上海信誼药业有限公司

SHANGHAI
SINE
PHARMACEUTICAL
CORP. LTD.





中共中央总书记、国家主席江泽民在政治局委员、上海市委书记黄菊陪同下，于一九九六年四月二十七日亲临信谊药业有限公司视察工作
The general secretary of the Central Committee of the communist Party of China, president of the state, Jiang Zemin accompanied by Huang Ju, the secretary of Shanghai Municipal Committee of the Communist Party, and other officials visited Shanghai Sine Pharmaceutical Corp. Ltd. on April 27th 1996.

关怀与期望

Great Expectations

产 品 目 录

PRODUCTS CATALOGUE

针剂 INJECTIONS	品 名 THE NAME OF PRODUCTS	规 格 SPECIFICATIONS
安乃近注射液	Analgine Injection	2ml:25%/Amp. 2ml:50%/Amp. 5ml:50%Amp.
毒毛旋花子甙K注射液	Strophanthine K Injection	1ml:0.25mg/Amp.
硫酸阿米卡星注射液	Amikacin Sulfate Injection	1ml:50mg/Amp. 2ml:200mg/Amp.
地塞米松磷酸钠注射液	Dexamethasone Sodium Phosphate Injection	1ml:2mg/Amp. 1ml:4mg/Amp. 1ml:5mg/Amp.
氨茶碱注射液	Aminophylline Injection	2ml:0.5g/Amp. 10ml:0.25/Amp.
甲基硫酸新斯的明注射液	Neostigmine Methylsulfate Injection	1ml:0.5mg/Amp. 2ml:1mg/Amp.
法莫替丁注射液 (倍法丁)	Famotidine Injection	2ml:20mg/Amp.
氟康唑注射液	Fluconazole Injection	50ml:0.2%/Bottle. 100ml:0.2%Bottle.
氢化可的松注射液	Hydrocortisone Injection	2ml:10mg 5ml:25mg 20ml:100mg/Amp.
氨基苯酸注射液	Aminomethylbenzoic Acid Injection	10ml:0.1g/Amp.
氨甲环酸注射液	Tranexamic Acid Injection	5ml:5%/Amp.
磷酸氯喹注射液	Chloroquine Phosphate Injection	5ml:250mg 5ml:322mg 5ml:486.75mg/Amp.
灭菌注射用水	Sterile Water for Injection	2ml 5ml 7ml 10ml 15ml
葡萄糖注射液	Glucose Injection	20ml:25%/Amp. 20ml:50%/Amp.
葡萄糖酸钙注射液	Calcium Gluconate Injection	10ml:10%/Amp.
复方泛影葡胺注射液	Meglumine Diatrizoate Composite Injection	20ml:60%/Amp. 20ml:76%/Amp.
泛影葡胺注射液	Meglumine Diatrizoate Injection	100ml:60%/Bottle.
其它剂型 Other Prescriptions		
舒喘灵气雾剂	Salbutamol Aerosol(Suspension)	20mg/phial
丙酸倍氯米松气雾剂 (信可松)	Beclomethasone Dipropionate Aerosol(Suspension)	10mg/phial
色甘酸钠气雾剂	Sodium Cromoglycate Aerosol (Suspension)	700mg/phial
氧氟沙星滴眼液 (信利妥)	Ofloxacin Eye Drops	5ml:5mg
氧氟沙星滴耳液	Ofloxacin Ear Drops	5ml:5mg
妥布霉素滴眼液	Tobramycin Eye Drops	8ml:24mg
色甘酸钠滴眼液	Sodium Cromoglycate Eye Drops	8ml:0.16g
酞丁安滴眼液	Ftibamzone Eye Drops	8ml:0.1%
盐酸萘甲唑啉滴眼液 (鼻眼净)	Naphazoline HCL Solution(Conc.)	10ml:10mg
硫酸庆大霉素滴眼液	Gentamycin Sulfate Eye Drops	8ml:40000lu
马来酸噻马洛尔滴眼液	Timolol Maleate Eye Drops	5ml:12.5mg 25mg
双歧三联活菌胶囊 (培菲康)	Bifico Triple Viable capsules	210mg/Cap.
辅酶Q10胶囊	Co-enzyme Q10 Capsules	10mg/Cap.
罗红霉素胶囊	Roxithromycin Capsules	50mg/Cap.
虫草头孢胶囊 (中心宝)	Cephalosporium Sinensis Capsules	0.25g/Cap.
银杏叶胶囊 (百路达)	Ginkgo biloba L. extracts Capsules(PROMCD)	40mg/Cap.
氨甲环酸胶囊	Tranexamic Acid Capsules	200mg/Cap.
利福平胶囊	Rifampicin Capsules	300mg/Cap.



上海市副市长赵启正、原任任
人谈跃、市政协副主席傅明雷及
国家医药管理局局长郑筱萸等亲
临对信谊药业公司的发展表示了
关爱。

City officials of Shanghai municipal
government, Zhao Qizheng (former
vice mayor), Fu Mingwei (former
vice chairman of national medical
administration bureau), Zheng
Xiaoyu (former minister) and other
experts, City Ltd. and shown
their great expectations for the
development of SINE.





目 录

CONTENTS

关怀与期望
Great Expectations

硬件趋一流
State-of-the-art Equipments

开拓大市场
A Broad Market

科技显活力
Dynamic Research

情播双文明
Rich Enterprise Culture

品牌遍世界
Sine at Abroad



除
FINE



好药 还有信誉和友谊

CREDIT FIRST-CLASS PRODUCTS FRIENDSHIP

信谊药业推崇比别人快半拍的睿智，倡导标新立异不步人后尘的理念。其产品的推陈出新，高投入高产出及企业文化的承传，深得远见卓识出类拔萃真谛。尤其是面对未来现代品牌格局的形成更是迎头奋起。

信谊药业一向致力于发展医药保健事业，并以提高人类生活质量为目标。有着七十多年悠久历史的信谊商标，在国内外以不落俗套的创造力而享有盛名，个性厂房及信谊路在浦东金桥出口加工区内独树一帜。

Having been pursuing the goal to enhance human living quality through developing new effective medicines for more than 70 years, Sine Pharmaceutical boasts a reputation of being trust-worthy and innovative both at home and abroad. Now with an even stronger faith in that pursuit and its creativity, taking a faster pace than its competitors, Sine strides boldly towards the future with a determination to face the challenges from a whole spectrum of brand names, with new Sine products introduced one after another backed by large investments in research and Sine's long glorious traditions. Headquartered in Jinqiao Export Processing Zone in Pudong New Area, Shanghai, Sine Pharmaceutical Corp., Ltd. has become a land-mark manufacturer there with the characteristic plants and a road named after it.



董事长：刘予舫
Chairman: Liu Zhufang



总经理：陆培康
General manager: Lu Peikang



2007年贵公司董事会新一轮发展规划
The directors of the board are making the new plan for 2007.



信谊药业公司前经理以工干部正在聚首议事
The general staffs are in discussion.

公司的成就是与公司的决策者们的紧密合作，勤奋敬业分人共苦
The success of the company is closely related with the cooperation spirit and hard work of the staff.

信
SINE
誼



三十年代信誼藥廠的中外股東們
Chinese and foreign share holders of Sine Laboratories in the 1930s



信誼藥廠創始人之一鮑國昌先生
Mr. Bao Guochang, one of the
founders of Sine Laboratories.



四十年代信誼藥廠在杭州的產業—西湖飯店
Advertisement of Sine Laboratories on
Xihu Lake hotel in Hangzhou in the 1940s.

信誼藥業有限公司是由信誼藥廠和香港新鴻基集團于一九九二年合資組建。

信誼藥廠始創于一九二四年，三、四十年代以消治龍、維他賜保命等優質藥品使信誼成為良藥商標，享譽東南亞。解放後又以品種多、劑型全而成為國內制劑藥廠翹楚。

信誼藥業有限公司正是淵源於我國輝煌的民族工業根底，在改革開放中面向二十一世紀進軍滬東的全新的現代化的制藥基地。

Shanghai Sine Pharmaceutical Corp. Ltd. is a joint venture founded by Sine Laboratories and Hong Kong Sun Hong Kai Investment Industrial Co., Ltd. in 1992. The modern facilities subjected to GMP standard covers an area of 745,000m² with a total investment of \$30million.

Sine Laboratories was established in 1924. Early in the 1930s and the 1940s, Sine's products such as "vitaspermin" and "sulfathiazon" had made "Sine" the brand of quality products in Southeast Asia. After the liberation in 1949, Sine Laboratories has developed into a multi-producing pharmaceutical enterprise enjoying the complete forms of preparations and a large number of products.

Based on the past glorious national industry, Shanghai Pharmaceutical Corp. Ltd. under the policy of reform and opening toward outside is becoming a twenty-first century modern pharmaceutical base in Pudong.



信誼藥廠原總經理，現為市人大常委會副主任，信誼名譽顧問陳銘珊先生
The former director of Sine Laboratories Mr. Chen Mingshan, now is the deputy director of the standing committee of the municipal People's Congress and honorary adviser of Sine.

硬件趋一流
State-of-the-art
Equipments



一流的设备，为生产一流的药品奠定了坚实的基础
First Class Equipments, High Quality Products



符合国际与MBA标准的办公楼为浦东金桥出口加工区的一大地标
The modern building, which met the MBA standard, becomes a new scene of Jinqiao Export Processing Zone in Pudong New Area.



同样由邦格设计的办公楼内景
Inside of the office building.





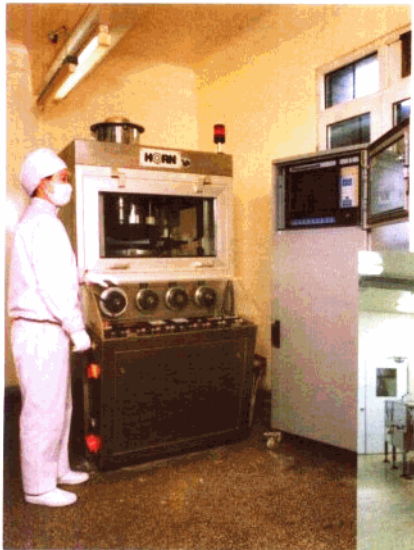
良好的分析环境，精密的测试仪器，保证了质量监控系统的正常运行。
Good analysis environment and accurate measuring instruments ensure the running of the quality control system.



紫外分光光度仪
Ultraviolet spectrophotometer



红外分光光度仪
Infrared spectrophotometer



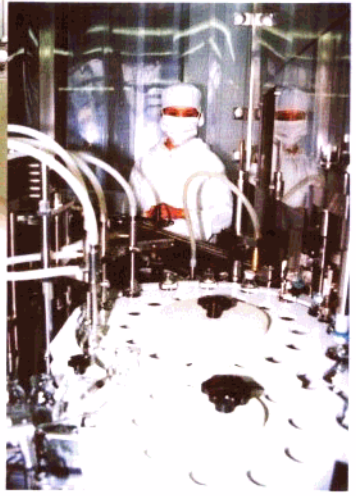
德国HORN高速压片机
HCAN High Capacity Rotary Tablet Press (Germany)



美国KING片剂包装机
KING Automatic Tablet Packing Line (USA)



英国GS高效包衣机
GS Coating System (Britain)



意大利97液体灌装联动机
97 Liquid Filling System (Italy)

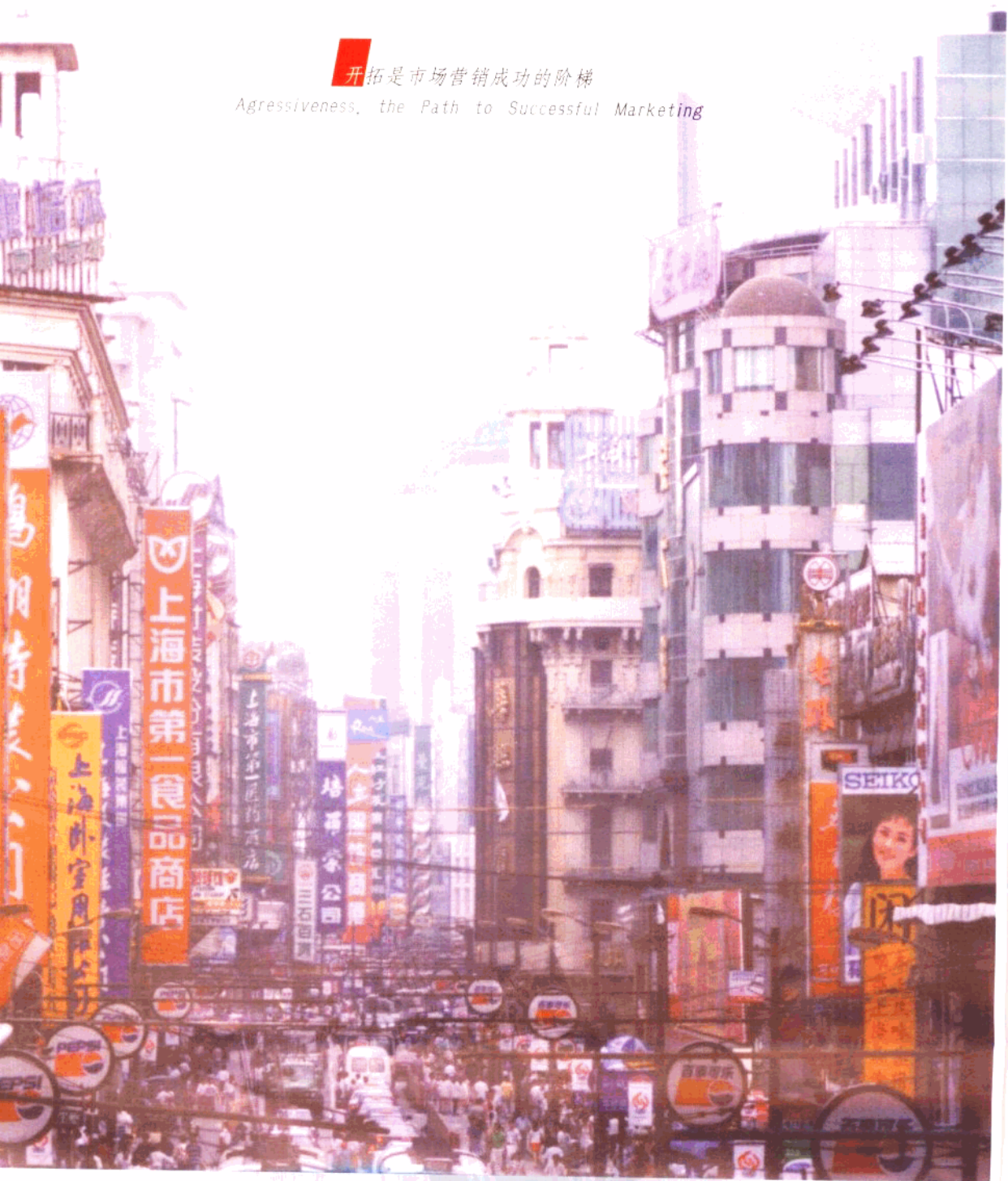
一流的生产设备保证每一片、每一粒、每一粒胶囊的质量处于最优良状态
First-class production equipment guarantee the high quality of products.



开拓大市场
A Broad Market

开拓是市场营销成功的阶梯

Agressiveness, the Path to Successful Marketing





公司领导接待马达加斯加的客人参观
Visit by guests from Madagascar



加拿大卫生部长对信谊药品情有独钟
Canadian minister of public health appreciates Sine products



马来西亚医药代表团来信谊洽谈外贸
Visit by medical delegtion of Malaysia



科技显活力

Dynamic Research

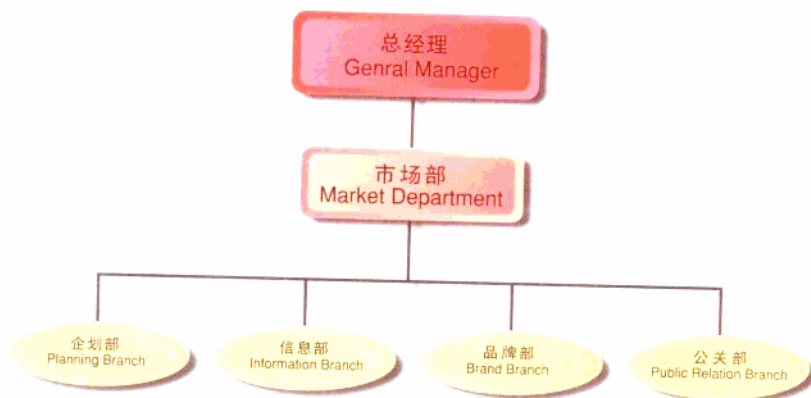
进取精神造就了信谊人忠实于科学，服务于健康的性格

Faith in Science Devotion to Health Care, No Best, Only Better for Sine



依托品牌，取胜市场，药业公司特设置市场部并成立培菲康品牌公司，使营销传播得以科学的指导和发展，为信道二十一世纪恢宏远大的发展前景奠定坚实的基础。

Depending on the brands, SPC is setting up her Market Department and BIFICO Brand Compy, bringing scientific guide to the marketing Communicating. This is what lays a foundation of the prominent prospect of SINE in 21's century.



市外部业务员探讨市场策略
Sales representatives are making the marketing strategies



公司在各地举行产品学术推广
Seminar on Sine products



科技显活力
Dynamic Research

进取精神造就了信谊人忠实于科学，服务于健康的性格

Faith in Science Devotion to Health Care, No Best, Only Better for Sine