

良友

THE YOUNG
COMPANION

1926—1945

良友畫報(影印本) **THE YOUNG COMPANION**
1940 156-161

輯三出己

外號誌雜畫圖友良

次二第

報畫戰大界世次二第

輯一版出月每

展發事戰隨緊

冊一手人宜允

者局時洲歐心關

版出將即輯四第



良友一五六期目錄

二十九年七月號

浴後(陳雲裳女士).....

張中修著色 封面

勝利的啓示.....

王小亭

漫天煙火日機頻在行都肆虐.....

卓世傑

神經戰攻略下重慶人心鎮定.....

卓世傑

巴黎淪陷法國接受和平條件.....

卓世傑

貝當對德屈服英將繼續作戰.....

卓世傑

歐洲地圖變色.....

卓世傑

希特勒是圍棋聖手.....

卓世傑

噴火式坦克車.....

卓世傑

地中海的兩個門戶.....

卓世傑

德機械化部隊一師團兵力之配備.....

卓世傑

被遺忘的人們.....

卓世傑

一個難民的故事.....

卓世傑

神佑我民.....

卓世傑

西北的心臟——蘭州.....

卓世傑

憶蘭州.....

卓世傑

沙漠舟.....

卓世傑

嘉陵江畔漢墓殘跡.....

卓世傑

清涼境界.....

卓世傑

夏天的良友——扇子.....

卓世傑

綠水池邊.....

卓世傑

中國章軍爲生產服務.....

卓世傑

攝影講座(其一).....

卓世傑

以草爲糧.....

卓世傑

精乳麥福口樂



上海白克路
二百五十五號
九福製藥
公司監製
電話九二〇四二
九三二八〇



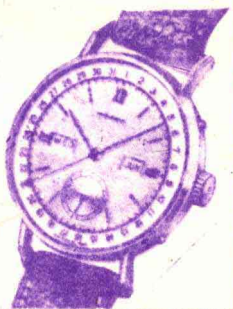
夏令冷飲滋補衛生
味美可口經濟便利
樂口福麥乳精 調合冷飲 以其包含豐富之補養質 不但美味可口 涼沁心脾 且有防免 桂夏 促進消化 補益身體 種種偉効實爲夏令最有益之滋 補衛生飲料
公司藥房洋酒食物號及食品商店 均有出售

行發司公藥製福九海上

廠名界世 度嘩呖



錶曆日
確正示指
期星日
永秒分
誤差



機時失勿

錶泳游型新兩列上
(者創始錶泳游)度嘩呖是
鑲玻，水入不保。品出良精
彈及帶皮之水瀉以配，爛不
宜相格價，帶鋼之簧
售代有均行錶鐘及司公大各

MOVADO Watches

樓五行銀亞東 行洋興昌 香港 理經總南華
間房號四〇四

SOLE AGENTS-CHINESE TRADING Co., B. E. A. BUILDING

10, DES VŒUX RD., C. 4TH. FLOOR ROOM 404.

示啓的利勝

始開年四第戰抗國中

ON EVE OF CHINESE VICTORY

Sino-Japanese War Enters Fourth Year



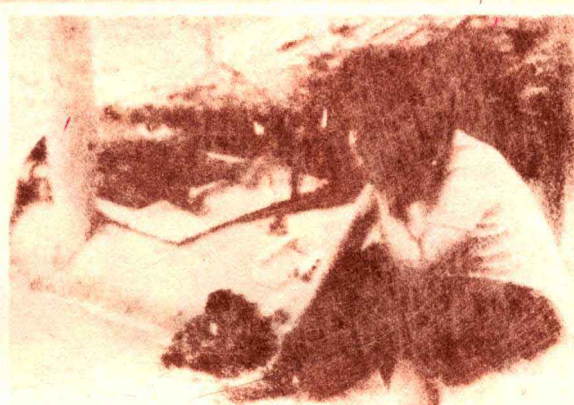
日天漫火烟

ON CHUNGKING



絕痛中礫子婦歸家民，被房。
。欲悲堆瓦礫，可無居燬舍

They lost their home.



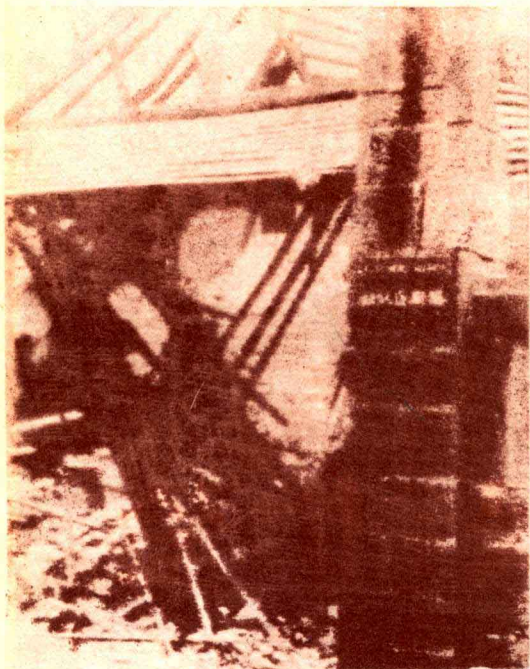
哀悽屍亡在婦，被無平
號愴旁夫其人炸幸民

She lost her beloved.

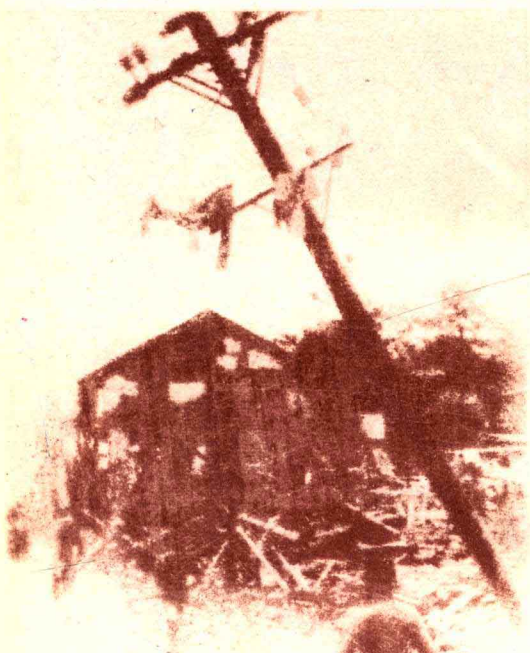
機 頻 在 行 都 肆 虐

RUTHLESS JAPANESE RAIDS

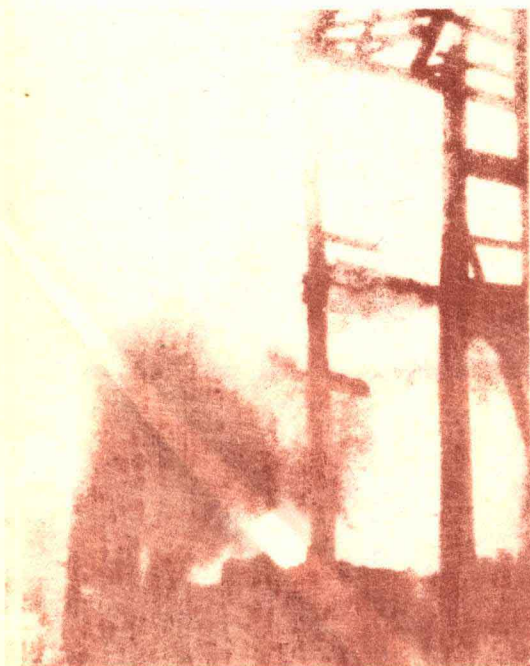
卓世傑攝



連殘之後片破址社訊通斯塔滄駐聯蘇
The Tass News Agency office was completely ruined.

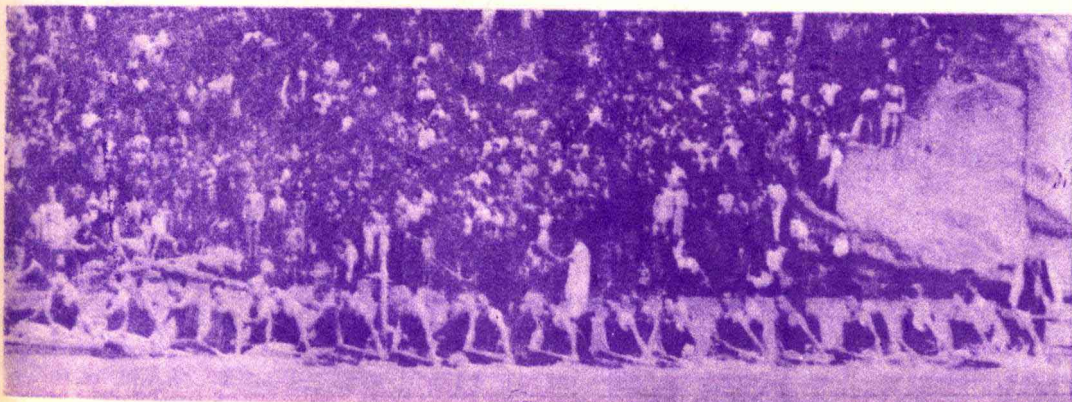


瓦散棟殘之後在彼道街區市
A new kind of wash-line.



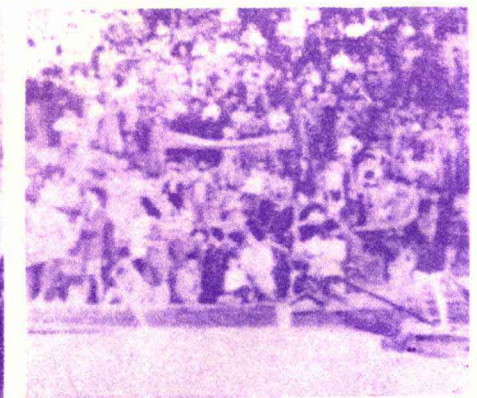
房民區市之中燒燃在
One of the thousands of buildings destroyed.

CHUNGKING CARRIES ON DESPITE AIR-RAIDS

[illegible]



Since the middle of May, Japanese bombers almost daily raided Chungking. Despite the destruction and massacre, the people in the Chinese war-time capital carry on more determined than ever to push the war to the very and victorious end. At right are pictures showing the big Dragon Boat Race held an hour after one of the most serious Japanese raids on June 9.



條平和受接國法

FRANCE ACCEPTS ARMISTICE TERMS

sing in face of the powerful German
sued for peace shortly after the fall
rganization of the government under
arshal Petain. The German armis-
to be more severe than those they
in 1918, were accepted and the
was subsequently revised. Demo-
ce and a totalitarian state under
Petain was born.

會政戰政年敗自共斯條所大諾刃月遇聯侵電，遲外擊強菲邊雙同自
矣治敗治間後一和制改提將內而十其軍入戰德，及工兩境方時去
。、、、、確八國度憲之閣閣告日猛馳法衛軍迄軍前事防之軍對年
又遂此領立七之，法和組辭論，烈援軍，掩本事暗，殺馬隊德九
獲使次導以○民法，平，戰陷巴攻，左進其年進偶互中奇和宜月
一德對世來年主關實條接，，黎勢終翼兵鋒五展有以，諾持戰三
拾義德界，對政西行件受由法兵，不，荷利月極小大薩及於以日
頭特再民七德權第法，德貝國不迄能雖比之十為接砲其齊法來英
機權度主十戰，三西並義當萊血六阻經，閃日緩觸遙堅格德，法

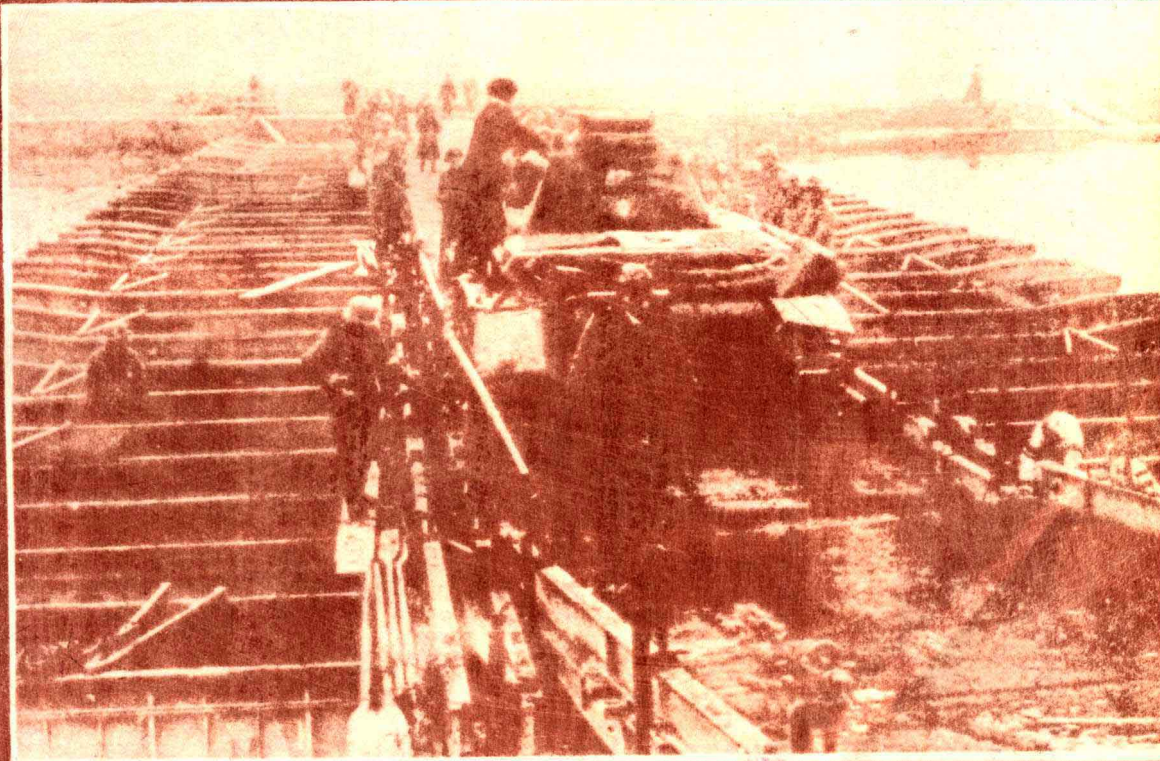


units advancing in Northern France.

。戰作線前部北國法在正，兵步國德之裝偽



台砲沙波之毀所砲重軍德被
the extensive damage and the rifles captured.



。發進常色向，橋浮之上河塞米設架渡橋車克坦軍德
German tanks crossing the Meuse near Sedan on a pontoon bridge.

件

Her defenses collapsed, France of Paris and the reo the premiership of M tice terms, declared themselves received French constitution cracy died in Fran

。塔鐵望遙上門旋凱在，後黎巴領佔軍德

German troops in Paris. View from the top of Arc de Triumphe with the Eiffel Tower in the background.

。巨極數爲，輛車火軍之棄遺軍法，上道大之黎巴通

Cars and munitions abandoned on the road to Paris by French troops.

Camouflaged German

。標路旁道爲右，事工餘殘之上道大郊近黎巴

Half-completed barricades on the road to Paris. Germans entered the city before they were completed.

。械槍之棄遺軍法爲前，跡殘

For le Bousso captured by Germans, Note

戰作續繼將英

大人如謂利，均戰條十條勒時閣極德六德之將能：而直表爭約二件求，，右理月軍時謂結一後至示，，年之和貝不派萊二佔代此延不已獲將英法前苛，當及領諸十領。乃丁列，得單國軍之，德即二袖辭四巴一載領此最獨上既凡不國向十貝戰日黎最，帝古後作下放爾下所希四當，，後偉後國爾勝戰，棄賽二提特小組由德之

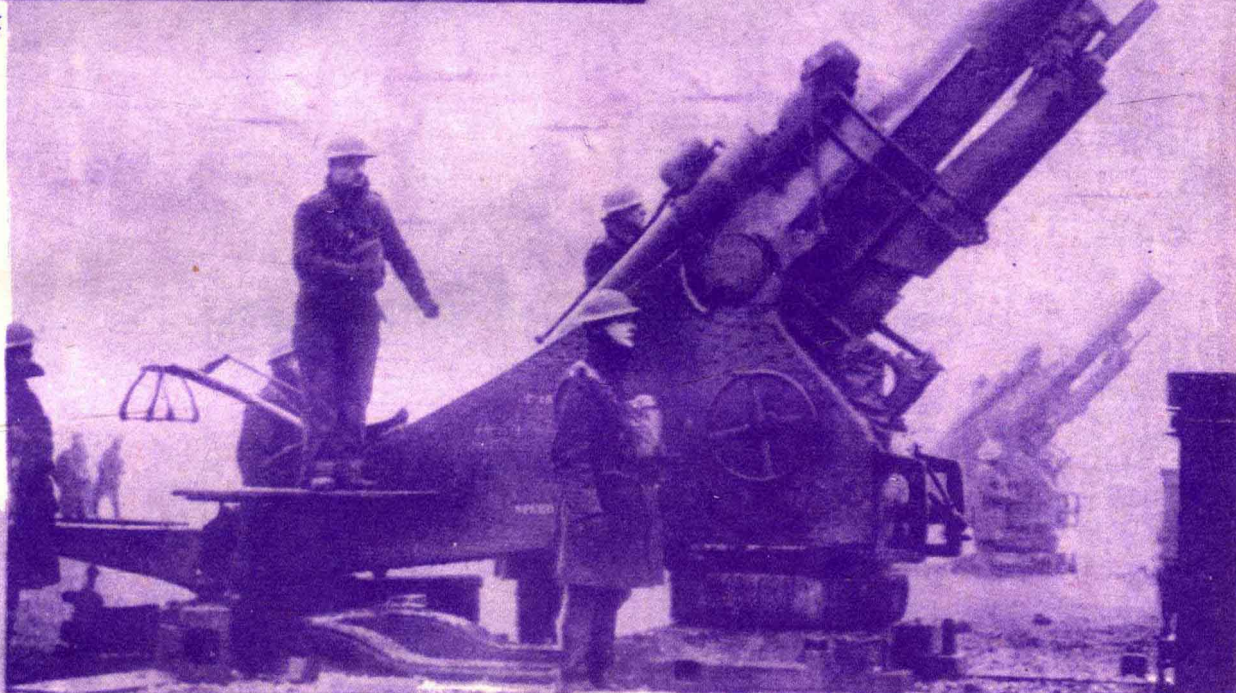
BRITAIN FIGHTS ON

Britain will fight on despite France's capitulation to the German panzer divisions. For the life and death struggle, Britain is mustering her immense resources to repulse the German blitzkrieg.

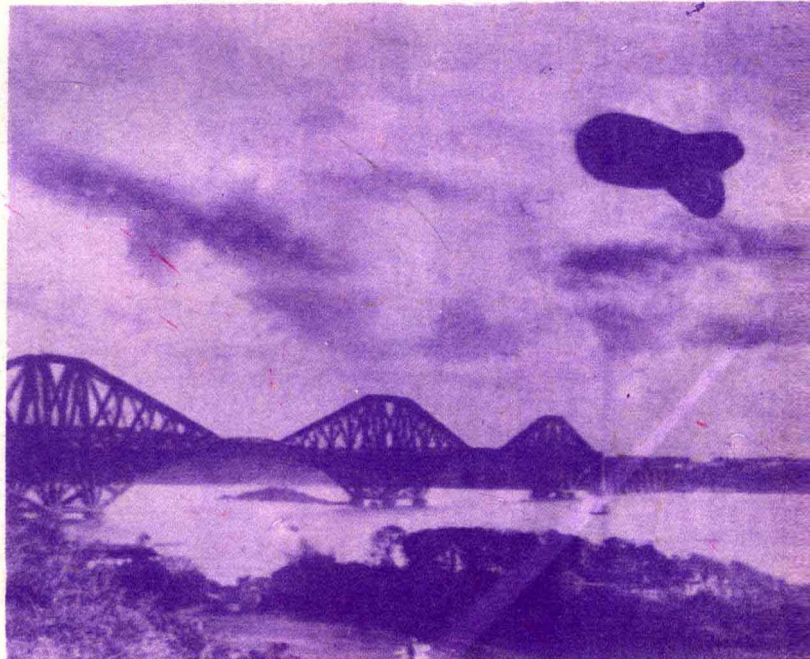
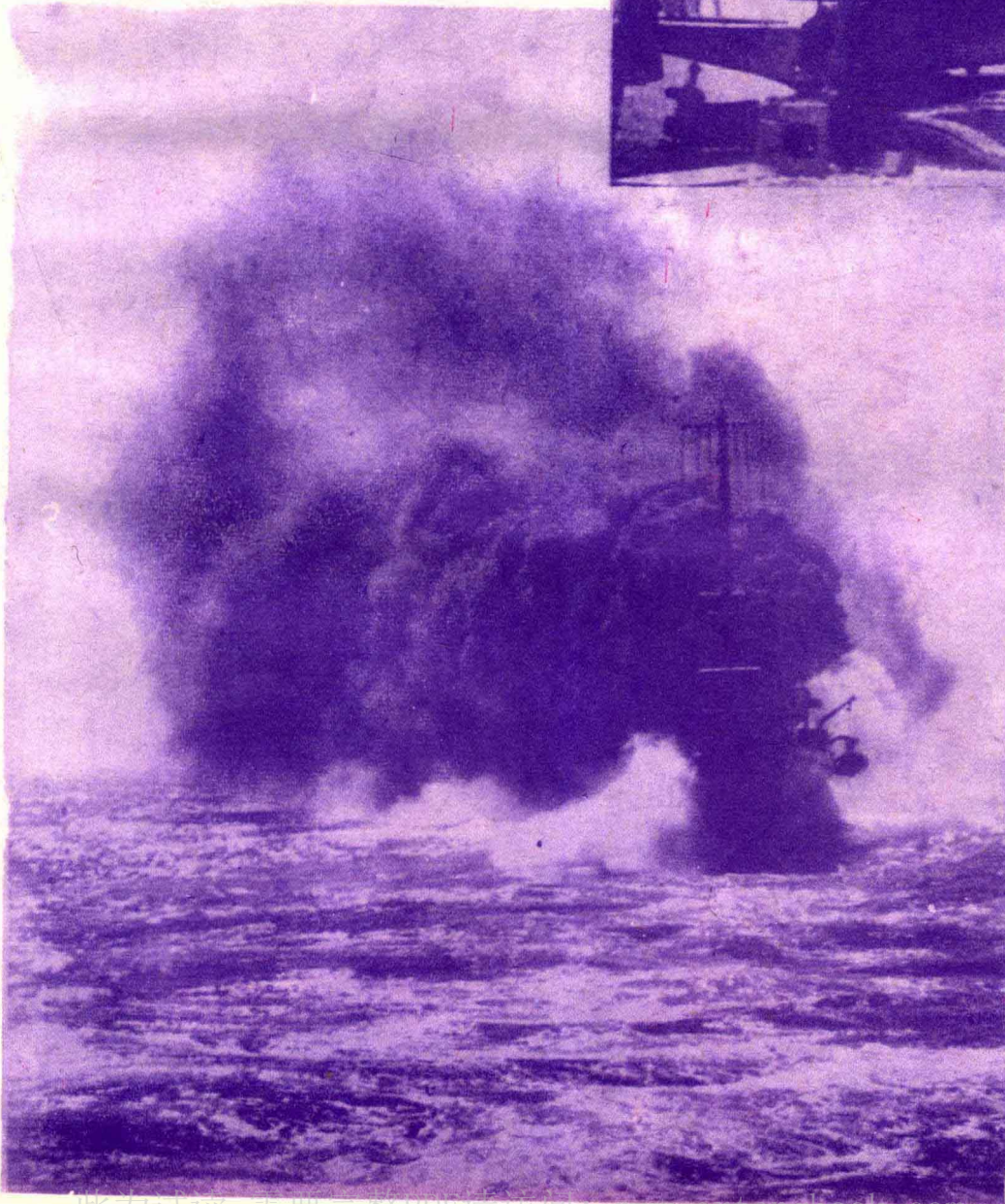


襲侵機德防以，空上岸海巡邏，夜晝分不羣機國英
British planes patrolling the Channel area on the look-out against Nazi raiders.

擊以德時擬施急其完中及區海已海英勢對持上在
。打義子隨，措緊或海地域狹在軍國之優絕保海
On the sea, Britain's powerful navy, bigger than the German and Italian navies combined, controls the Channel and the Mediterranean.



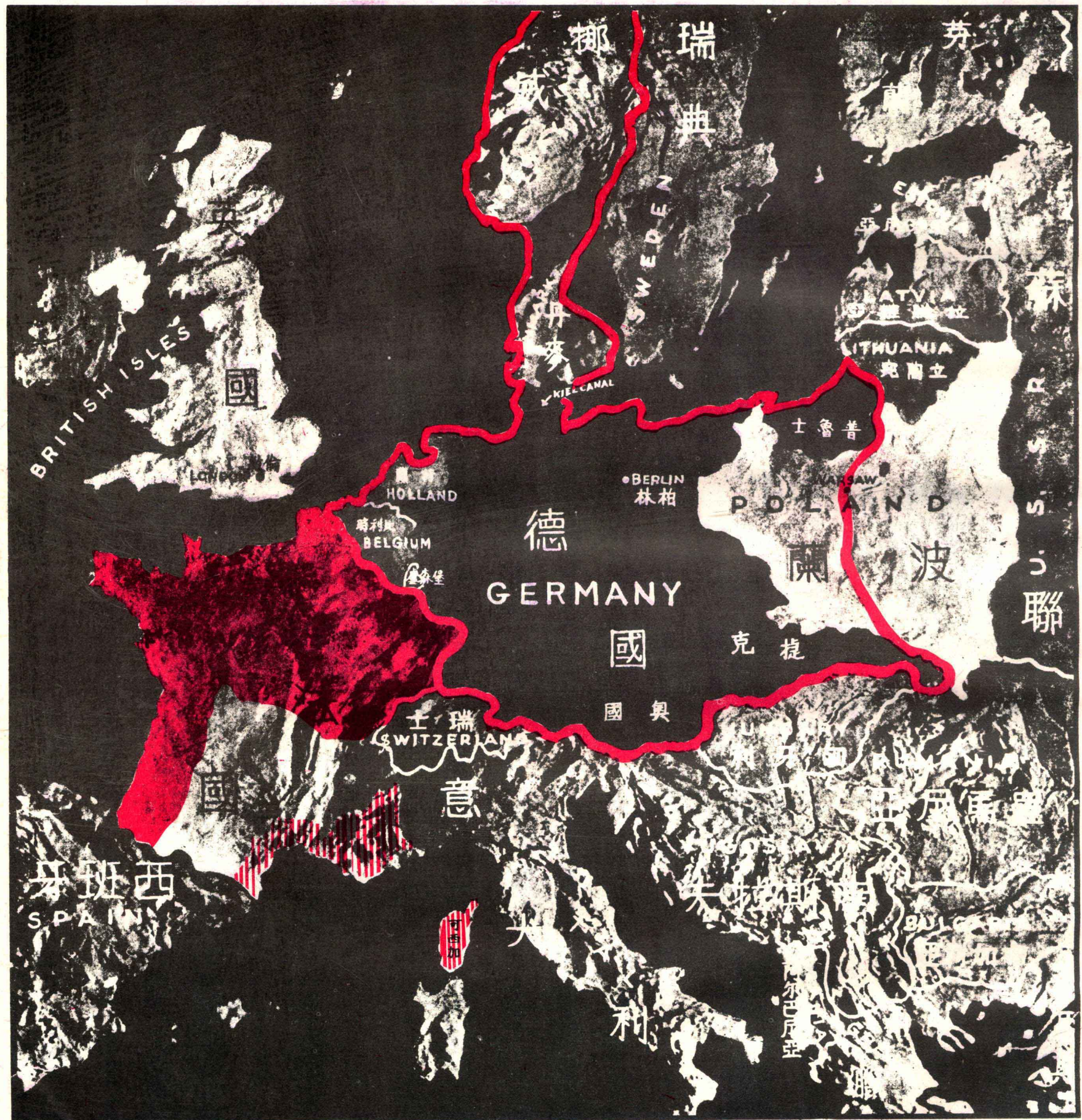
擊轟受遭將即，陸登如軍德，峽海國英於列排炮大之徑口時三十
Along the coast, heavy batteries are assigned to repulse possible German attempts at landing.



網球汽空防佈滿空上地據根軍海蘭格蘇
Over the famous Forth bridge, captive balloons await the German raiders.

色變圖地洲歐

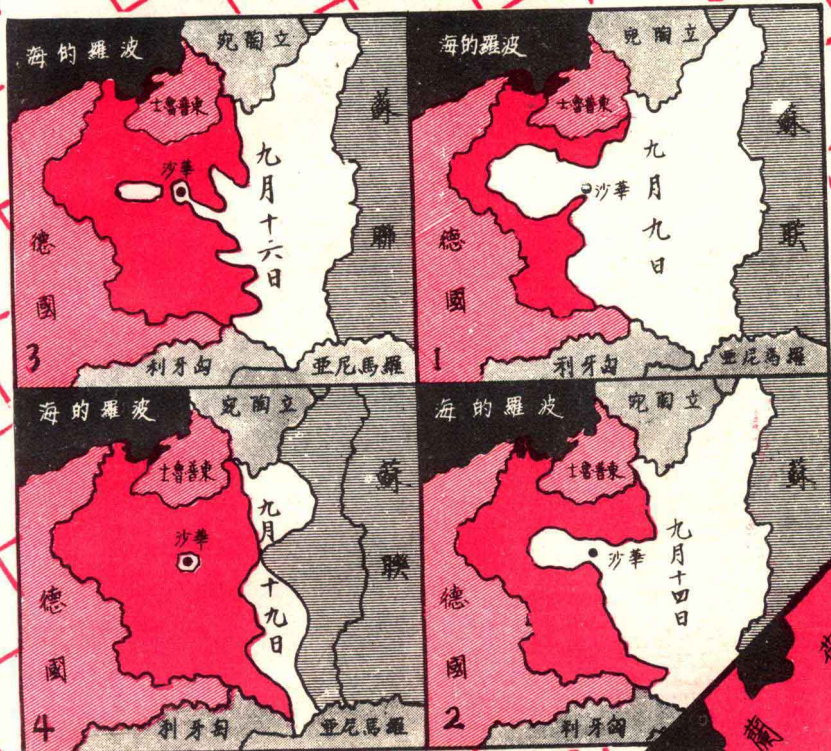
MAP OF EUROPE CHANGES RAPIDLY



The map of Europe is changing as rapidly as feminine styles. The political map, set down by the Versailles Treaty in 1919, saw tremendous revisions in the brief space of five years beginning January, 1935, when Herr Adolf Hitler marched into Austria. Then Sudetenland was merged, closely followed by the dismemberment of Czechoslovakia. In September, 1939, another series of important changes took place, starting with Germany's seizure of Danzig and the Corridor and eventually the whole of Poland. Since April this year, nations were wiped out after nations. Germany's blitzkrieg swept over Denmark, Norway, Luxembourg, Holland, Belgium and part of France.

歐洲領土大如，所大德五淪後九發此整在武奧期地驚方是域了十所
的的國的約何完有的法月陷，月後次個同力國是是異，我，領餘產
地目家目無製歐全大法德蘭，丹波，世捷年佔在一把希納作們雖色年生一
圖的的的可繪洲彼西國意亦荷麥德波界克九據一九薩勒粹一暫不了後的九
呢，領，能，的德洋只兩彼比和蘇蘭大國月捷九三爾脫勢大時彼。的歐一
！却土在預戰地意和刺協佔及挪兩亦戰被台克三五區改力概把國用今洲九
在主依料事國所地了定，盧威國于因倫併境八年快變之的德際武天新年
根權復，未，封中一簽二森在所一但為，內年一復地日觀軍所力，地在
本，一因結將領海戰訂月堡今瓜九澤保登蘇三月武圖益察佔承佔又圖凡
改而切為束來了了核後廿公年分三問護年台月，裝的購，領認領全，爾
適希被邱前應出心，二頓四，九題國三德被繼，第大不的，的部到賽
戰脫佔古，雷口，諾日在月此年舉。月區用着。一。蘇地但區變二宮

波蘭之役



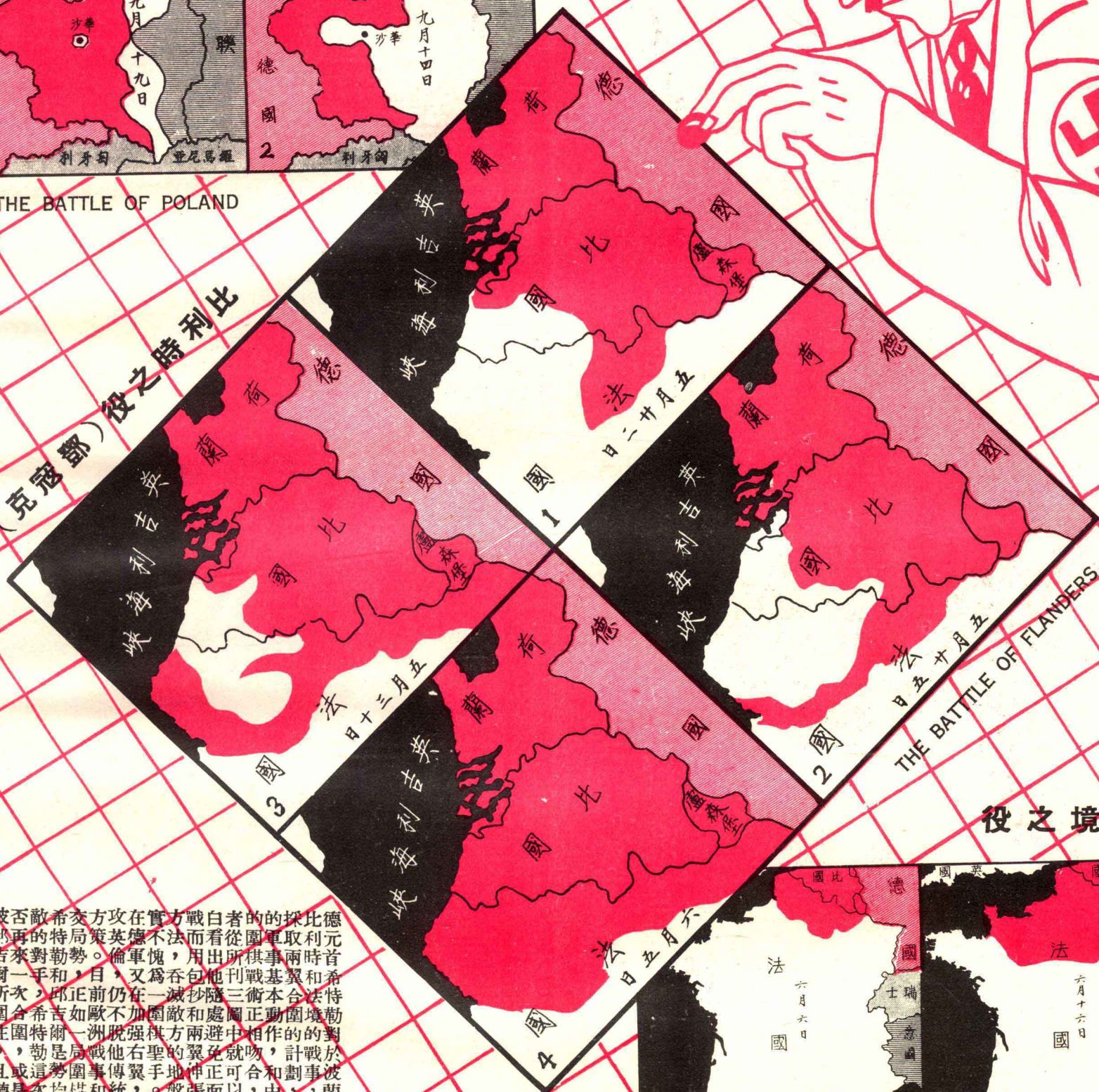
希特勒是圍棋聖手

HITLER: MASTER OF CHESS OF SIEGE



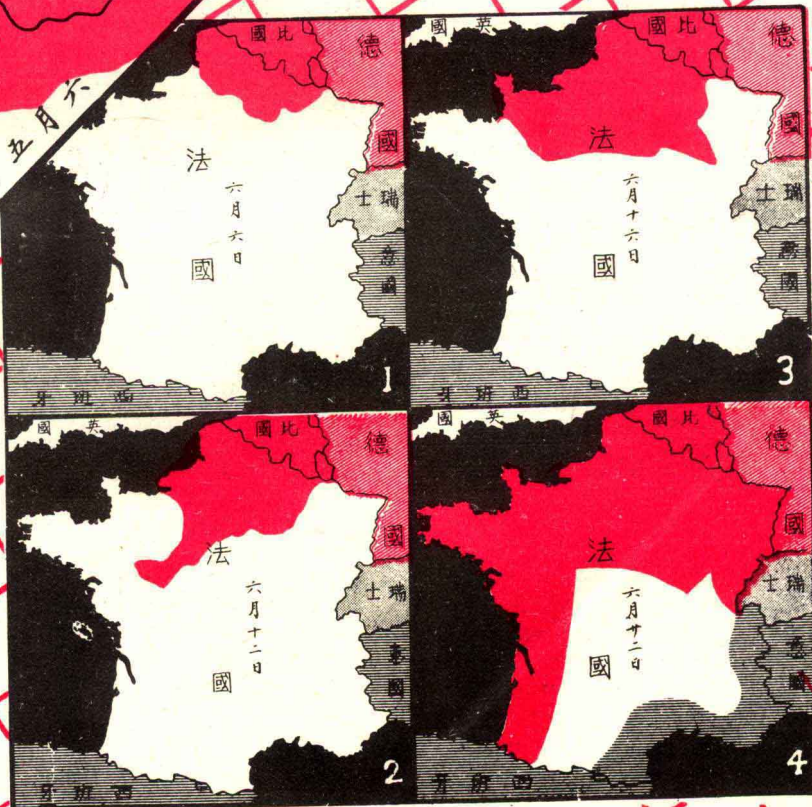
THE BATTLE OF POLAND

比利時之役 (克羅諾)



THE BATTLE OF FLANDERS

法境之役



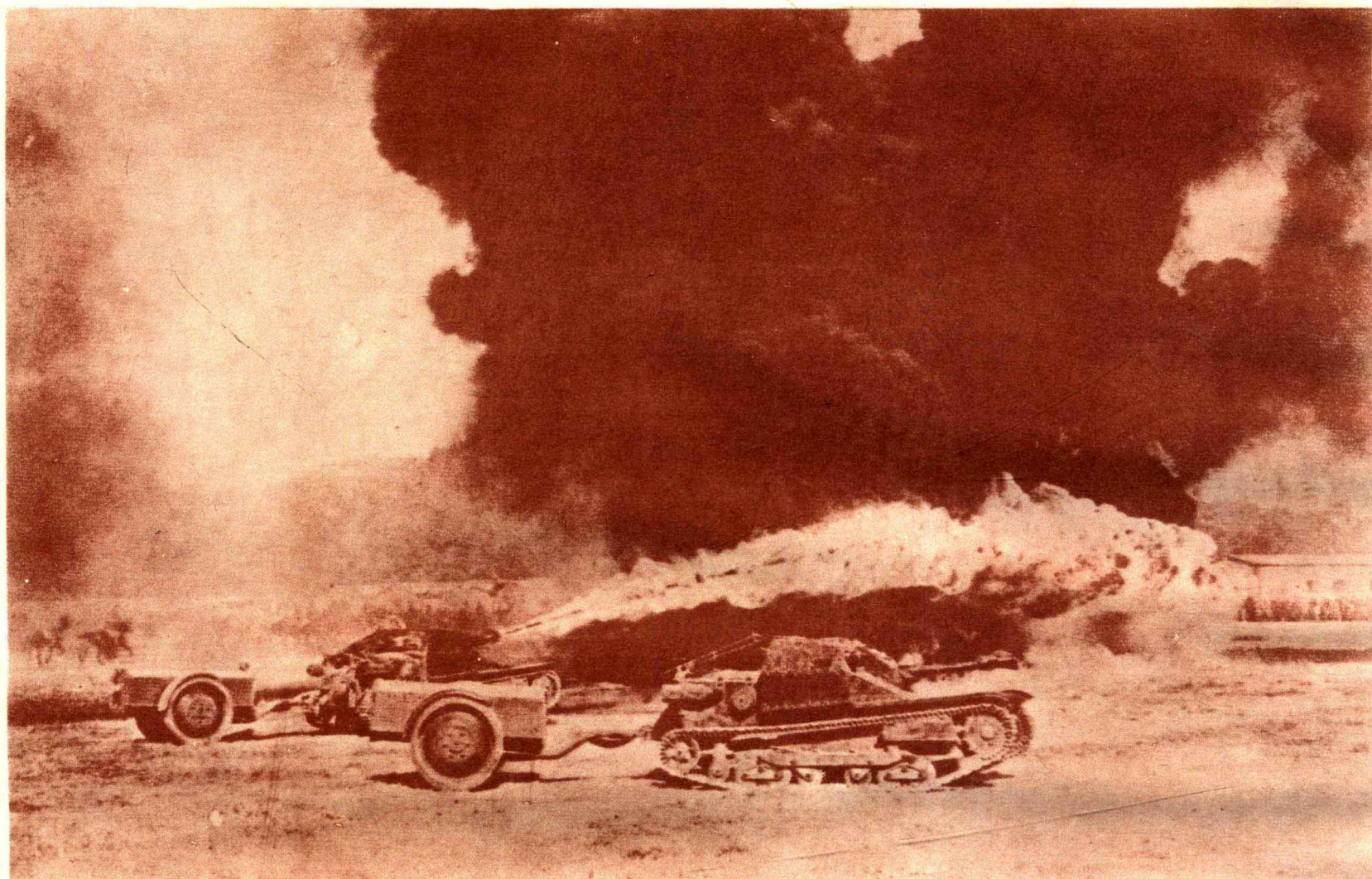
同被否敵希交方攻在實方戰白者的的採比德
分邱再的特局策英德不法而看從圍軍取利元
解吉來對勒勢。倫軍愧，用出所棋事兩時首
了爾一手和，目，又為吞包他刊戰基翼和希
。所次，邱正前仍在一滅抄隨三術本合法特
圍合希吉如歐不加圍敵和處圖正動圍境勒
住圍特爾一洲脫強棋方兩避中相作的的對
，，勒是局戰他右聖的翼免就吻，計戰於
且或這勢圍事傳翼手地伸正可合和劃事波
聽是次均供和統，。盤張面以，中，，蘭
下反能力，外的謀現，的作明讀國他都，

If Herr Adolf Hitler had not plunge himself into politics, the world would have witnessed one of greatest masters in the complicated game of siege. Avoiding a battle of positions, as all his neighboring nations had been prepared for, Hitler directed a battle of movements, featured by out flanking and pincer movements. The accompanying charts show the stage of the more important battles fought in Euorpe.

⑪遠其，作利，，克德已次九型創特人當一的為專果獲度攻一秘德噴。區以戰噴本尚車國經世一，製拉名時九發噴家。致應比種密國火別此時火圖無實式試界四並了的叫有○明火批但優用國，新所坦當例的坦為從情噴用大年且一，禮一六實坦評據越，時聞武誇克在彼情克意窺如火過戰第在具首查個年遠克，軍的因曾于器機車不，形車大視何坦。時一一獲先斐德，在車認事戰而一進之的為

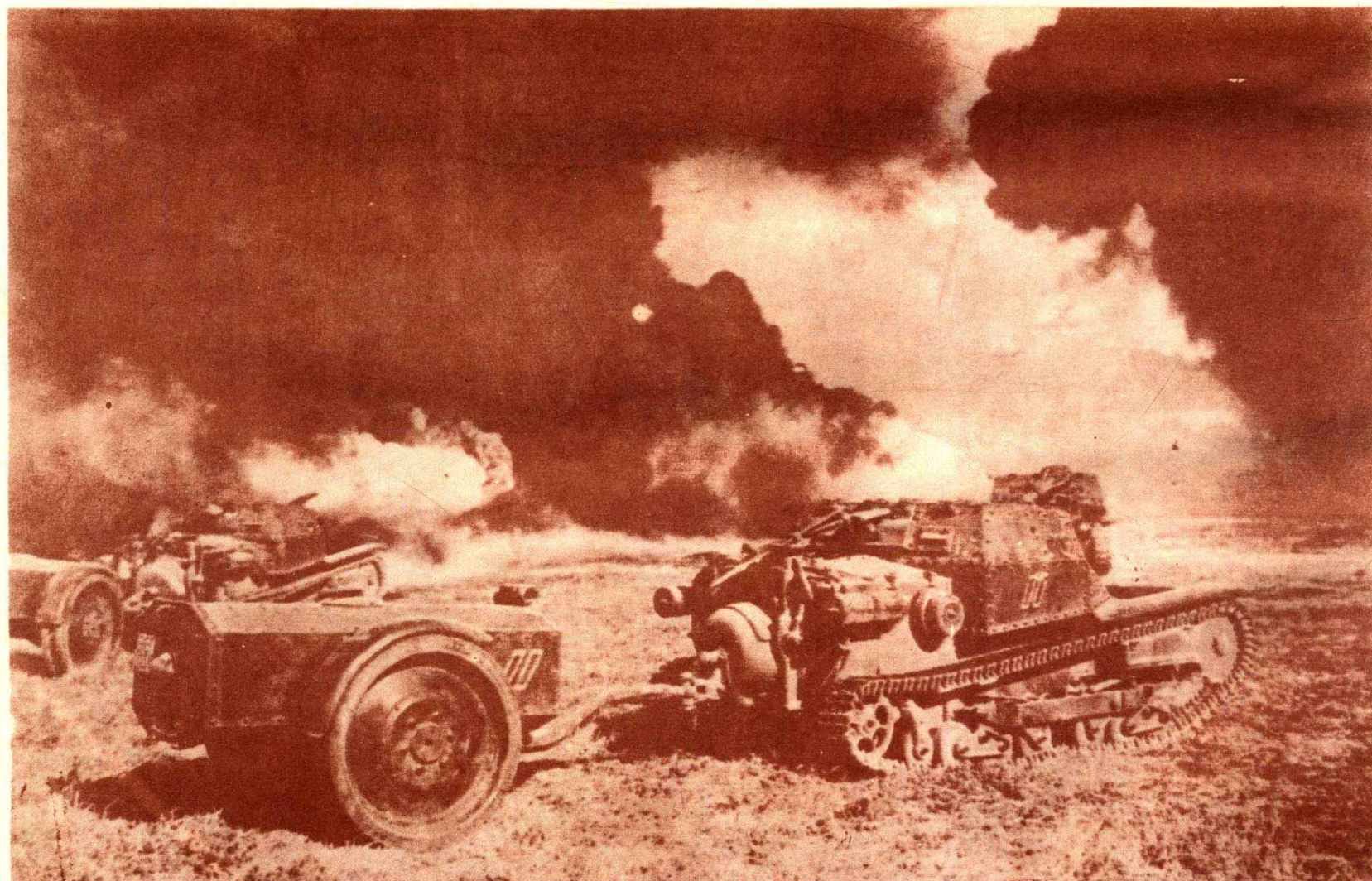
車克坦火噴

FLAME-THROWING TANKS



Flame-throwing tanks were one of the German "secret weapons" reported to have successfully played a part in the recent campaigns.

碼九可距，火烈生而，噴長使壓空，油合將，原車坦噴，之十達離其發的長發因出管由力氣由液的混是理的火



A near view of the flame-throwers, as adopted by the Italian army. Such tank work on the principle of a mixture of heavy and light oils propelled through a nozzle by compressed air organs, with a range at 90 yards.

車貯部，氣與火為前觀的克火利意。油為後機壓管噴部，近車坦噴大

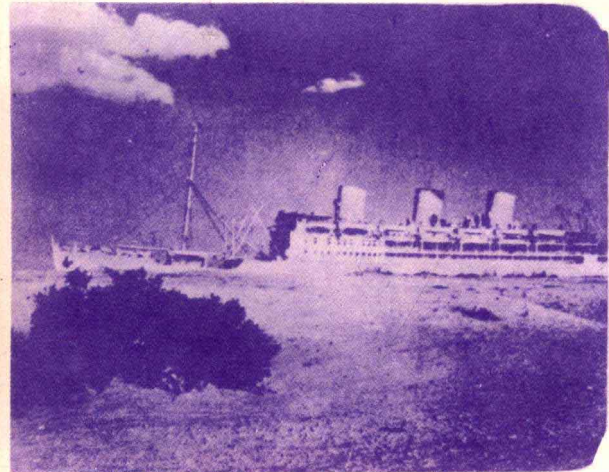
地中海的咽喉

英意爭霸中

⑫



為帆船民，峽陀布的恬
戲船賽以居上海羅直靜
Gibraltar, the western mouth to the Mediterranean.



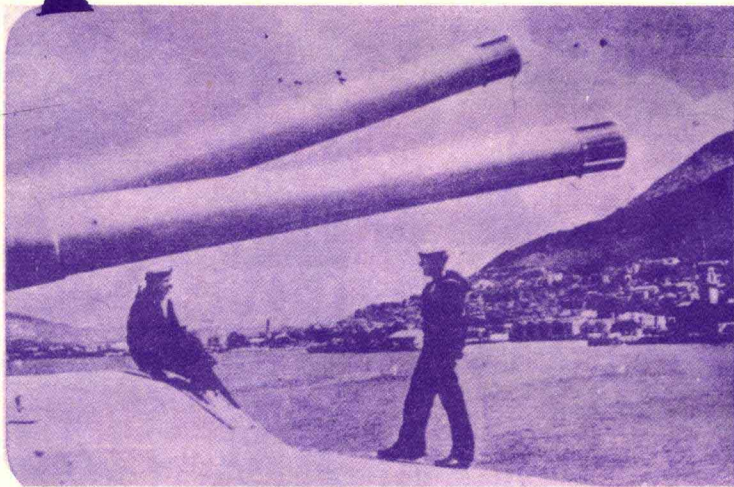
舟上如，巨見所沙河蘇從
。行陸彷彿的望漠阜士蘇
The Suez Canal, where a steamer passes every eighty
minutes in peacetime.

THE CONTROL OF MEDITERRANEAN

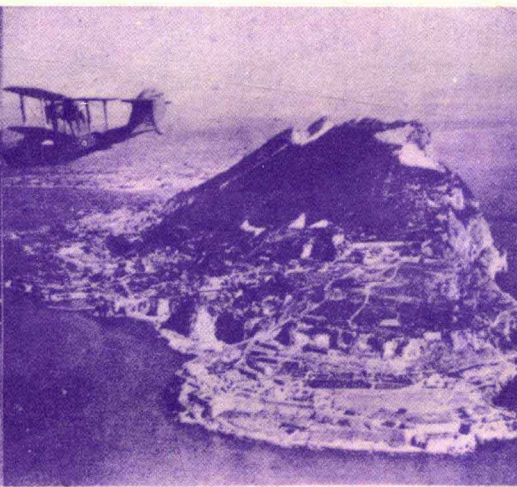


The struggle for control of Mediterranean reached its climax recently with Italy's entrance into the European war on Germany's side and her subsequent occupation of the French ports under the armistice terms. Italy has always been extending her influences in the Mediterranean which is known as the life-line of the British Empire. But Britain is giving no concessions. She has strengthened her naval bases in the narrow sea and is prepared to retain the supremacy despite the Italian threats. Aerial and naval battles have taken place and the land forces have clashed in Africa, the hostilities were featured by the death of Marshal Balbo, commander-in-chief of the Italian air force.

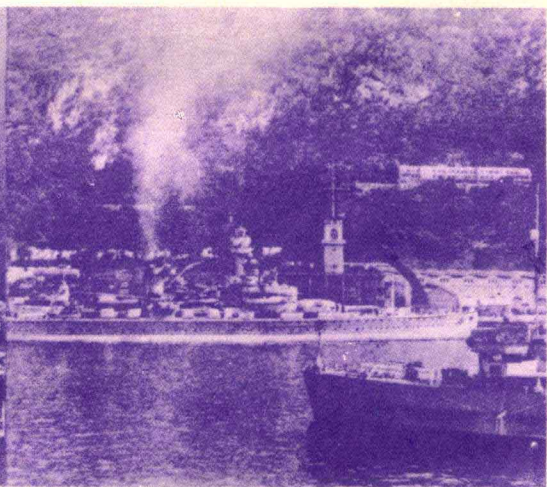
地中海之。在總大泰期迄以意佔能，同為惟非均陸後中自戰時德，空督，島，今地國後滿處時不地澳在段，海意事日意亦中，而附英猶中勢，足處意列中各英，地口大之難軍已殞且意近意未海力亞，威大顯海殖國地中岸利序將向或戰以大發海實作範特自覺利帝是民堂中海為奪幕未英為，英利生空現裏圍列阿天偏國賴地握海局意戰，定國英利空駐激氣，海，據爾然居之，間中之勢國，早，本意比軍利烈已最之然雖巴賴地生故之，出已全法已然七之亞戰比戰在近夢意已尼望中命地交而入部國揭地進戰之擊亞事馬二想大畫亞之海綫中通歐口白佔沿開中攻場沙而之數爾星，利入彼未中，海，亞，熱領地



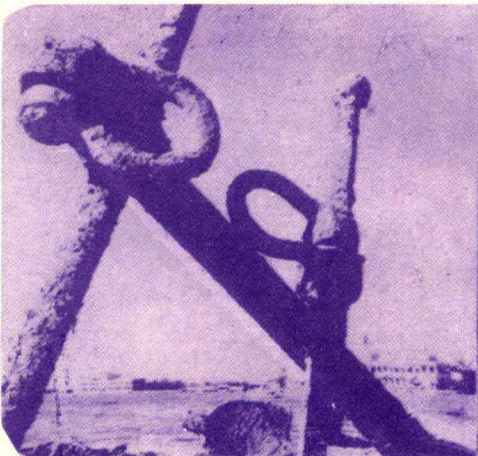
士間之恐戰絕似，幽風陀布望艦從。
樂人怖爭無一頗美景，羅直眺英。
The "Rock" as seen from a British warship.



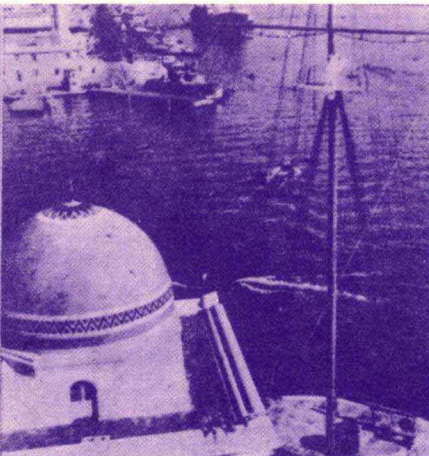
地牙西即遠瞰港及市羅直。
。陸班為處，島海區陀布。
A bird's eye view of Gibraltar.



款熱英曾光地進艦年三一。
特烈人受，觀該駛德七九。
German warship shown entering Gibraltar in 1937.



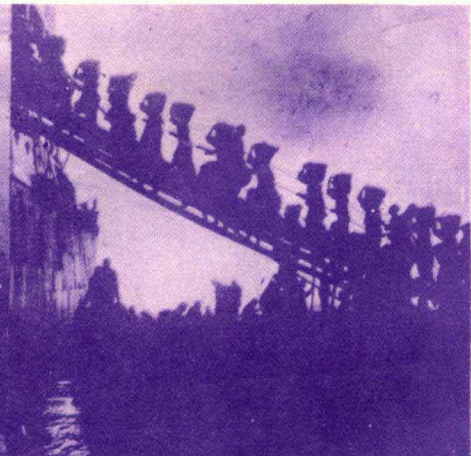
房局管運蘇口得為國。
舍的理河士蘇港賽右。
The Suez administration building in Port Said.



隘處出蘇為狹離岸港賽。
口的海士蘇，甚距兩得。
The narrowest point of the canal.



情時通意圖戶一的度通中為里一程河士蘇形之。
形之過艦為，門唯洋印海地，百僅全運蘇。
The 100 mile Canal links the Mediterranean with Indian Ocean.



之貨船運該圖喉的中通士蘇港賽。
情時裝煤地示，咽海地溝蘇為得。
Port Said is at the mouth of the Canal.

