

# OMRON

## 简介 PROFILE

上海欧姆龙自动化系统有限公司  
Shanghai OMRON Automation System Co., Ltd.



● 公司宗旨:

用我们的劳动提高我们的生活,创造更美好的社会

● 企业方针:顾客第一

● COMPANY AIM:

With our work we improve our living standard, And creat one more beautiful society

● COMPANY POLICY: Customers are the first



董事总经理:市川畅男(左)

董事长:黄卫峰(中)

第一副总经理:江龙康(右)

公司概要  
COMPANY ESSENTIALS

● 企业名称:上海欧姆龙自动化系统有限公司

● 企业类别:中日合资

● 投资方:欧姆龙株式会社

中国浦发机械工业股份有限公司

● 经营范围:生产、销售可编程序控制器和触摸屏、变频器及其附属终端元器件,承接成套工程中的可编程序控制器项目并提供售后服务。

● 投资总额:1000万美元

● 注册资金:792万美元

● 有效期限:一九九三年十二月三十一日至二〇一三年十二月三十日

● 占地面积:20,000平方米

● 职工人数:150名(99.6)

● COMPANY NAME:

Shanghai OMRON Automation System Co.,Ltd.

● COMPANY TYPE: a Sino-Japanese joint venture

● INVESTMENT COMPANY:

Omron Company

China Perfect Machinery Industry Co.,Ltd.

● OPERATION LIMIT:

We manufacture and sell PLC, programmable terminal, inverters and its subsidiary terminal Elements. In addition, we accept PLC items in complete sets of projects, and provide after-sale service.

● TOTAL INVESTMENT: USD 10million

● REGISTERED CAPITAL: USD7.92million

● TERM OF VALIDITY: Dec. 31, 1993—Dec. 30, 2013

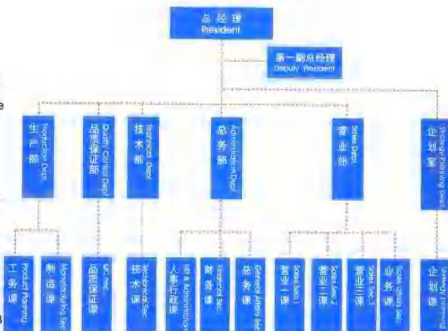
● COVERED AREA: 20,000M

● STAFF NUMBER: 150(June, 99)

董事会组织机构  
BOARD OF DIRECTORS STRUCTURE



公司组织机构  
COMPANY STRUCTURE



## 认定证书 CERTIFICATE

先进技术企业  
Advanced  
Technical  
Enterpris



ISO14001



ISO9001



高新技术企业  
High-Tech Enterprise

## 五年发展史 FIVE YEARS' DEVELOPMENT

1. 1993年12月31日 公司正式成立
2. 1994年7月15日 销售开始定为公司纪念日
3. 1995年11月20日 新厂房落成
4. 1995年12月29日 公司工会成立
5. 1996年1月 先进技术企业认定
6. 1997年4月 通过ISO9001质量体系认证
7. 1997年9月 高新技术企业认定
8. 1998年11月 通过ISO14001 环境管理体系审核认证

1. Dec. 28, 1993--The company was formally established
2. July. 15, 1994--The day began to sell and was selected to be commemoration day
3. Nov. 20, 1995--The new factory building was completed
4. Dec. 29, 1995--The labor union of company was founded
5. Jan, 1996--Awarded as Advanced Technical Enterprise
6. April, 1997--Received the certificate of ISO9001
7. Sept, 1997--Awarded as High-Tech Enterprise
8. Nov, 1998--Received the certificate of ISO14001

## 文化氛围 CULTURAL ATMOSPHERE

公司注重凝聚力工程创造企业良好的文化氛围为员工提供健身乒乓球等体育设施,为公司两个文明建设创造了条件(图为公司工会组织员工举行的各种联谊活动和体育比赛.)

Our company attaches importance to staff cohesion and create a favorable cultural atmosphere. We supply our staffs with sports facilities, such as gym, table tennis and soccer court etc, which create favourable conditions of company's two civilization constructions. The following pictures in clues a variety of parties and sports games sponsored by labour union of our company.



▲ 沉着应战!  
公司运动会乒乓球赛  
Keep cool!  
A glance of table tennis match in sports meet

联谊活动,有声有色  
Evening party  
Vivid and dramatic



加油!加油!  
公司运动会拔河一角  
Come on! Come on!  
Tug-of-war match in sports meet





## 超小型机器的弹性控制,正是ONE-A的魅力所在

*Spring control of microminiature PLC incarnate charm of the ONE-A*

覆盖了10-100点分布的丰富的点数构成  
*Select Units to Control from 10 to 100 I/O Points*

具备10点到40点的CPU单元,如与扩展I/O单元并用,可使输入输出点数范围扩大到100点。  
*CPUs are available with from 10 to 40 I/O points and in combination with Expansion I/O Units, can be used to control a total of from 10 to 100 points.*

### SYSMAC CPM1A



只有30点、40点的CPU单元才可扩展,扩展I/O单元最多可接3台。

*Only 30-point and 40-point CPUs support Expansion I/O Units. Up to three Expansion I/O Units can be connected.*



## SYSMAC CQM1是适合多种小规模机器控制的理想PC

*The SYSMAC CQM1 is the ideal PC for controlling a Variety of small scale machines.*

专用的CPU  
*Dedicated CPUs*

依照程序存储器容量、数据存储器容量、I/O点数、内置功能的不同,有七种型号CPU可供选择,适用于各种各样的应用。  
*A total of seven CPUs are available with varying program memory and data memory capacities I/O points, and built-in features for a variety of applications.*

标准CPU



CQM1-CPU11-E

CQM1-CPU21-E

高性能,大容量CPU



CQM1-CPU41-EV1

CQM1-CPU42-EV1

CQM1-CPU43-EV1

CQM1-CPU44-EV1

高性能、大容量CPU单元 (最大I/O点数256点)		Highly Functional, large capacity Models (I/O 256 Points MAX)
CPU41 - EV1	大容量CPU, 包括一个RS-232C端口	A large-capacity CPU incorporating an RS-232C port
CPU42 - EV1	大容量CPU, 包括一个RS-232C端口和模拟设置功能	A large-capacity CPU incorporating an RS-232C port and analog setting function.
CPU43 - EV1	大容量CPU, 包括一个RS-232C端口和两个高速脉冲I/O端口	A large-capacity CPU incorporating an RS-232C port and two high-speed pulse I/O Ports
CPU44 - EV1	大容量CPU, 包括一个ABS接口和一个RS-232C端口	A large-capacity CPU with ABS (absolute) interface and RS-232C port.
CPU45 - EV1	大容量CPU, 包括4个模拟量输入, 2个模拟量输出和一个RS-232C端口	A large-capacity CPU, incorporating four analog inputs, two analog outputs and RS-232C port
标准CPU单元 (最大I/O点数128点)		Standard Models (I/O 128 Points MAX)
CPU11 - E	CGM1系列的最基本CPU型号	A CGM1-series basic CPU model
CPU21 - E	CGM1系列的基本CPU型号并包括一个RS-232C端口	A CGM1-series basic CPU model incorporating an RS-232C port

- 传感器单元
- 模拟量I/O单元
- B7A接口单元
- I/O链接单元
- CompoBus/D从单元
- CompoBus/S主单元
- 温度控制单元
- G730接口单元
  
- Sensor Units
- Analog Input and Output Units
- B7A Interface Units
- I/O Link Units
- CompoBus/D Slave Units
- CompoBus/S Master Units
- Temperature Control Units
- G730 Interface Units

专用的I/O单元  
Dedicated I/O Units



为高水平控制而设计的  
To a Higher Level of Control

**SYSMAC**

C200HX/C200HG/C200HF



- PC 具备的基本功能更加充实  
The Basic Functions of PCs  
were enriched

CPU 型号 CPU Model	程序容量 Program capacity	DM (字) DM (words)	EM (字) EM (words)	基本指令处理时间 basic instruction processing time	I/O 点数 I/O points
C200HE-CPU11/32/42[-z]	3.2K~7.2K	4K~6K	无	0.3 μs	640~880points
C200HG-CPU33/43/53/63[-z]	15.2K	6K	6K	0.15 μs	880~1184points
C200HX-CPU34/44/54/64/65/85[-z]	31.2K~63.2K	6K	6K × 3 6K × 8 6K × 16	0.1 μs	880~1184points

- 全系列的通信板为应用提供理想的PC  
A Complete Line of Communications Boards to  
Provide the Ideal PLC for the Application

- 新改进的特殊I/O单元使得PC应用更为容易  
To Make the PLC Even Easier to use ,Improved  
Special I/O Units

型号 Model	规格 Specifications
C200HW-COM01	提供一个与Controller Link,SYSMAC LINK 和SYSMAC NET链接单元连接的总线连接 端口 Communications port for Controller Link, SYSMAC LINK,and SYSMAC NET Link Units
C200HW-COM02-V1	一个RS-232C端口 RS-232C port
C200HW-COM03-V1	一个RS-422/485端口 RS-422/485 port
C200HW-COM04-V1	提供一个与Controller Link,SYSMAC LINK 和SYSMAC NET链接单元连接的总线连接 端口和一个RS-232C端口,具备通信协议宏 功能 Communications port for the Controller Link, SYSMAC LINK,and SYSMAC NET Link Units, an RS-232C port, with a protocol macro function
C200HW-COM05-V1	二个RS-232C端口,具备通信协议宏功能 Two RS-232C ports, with a protocol macro function
C200HW-COM06-V1	一个RS-422/485端口,一个RS-232C端口, 具备通信协议宏功能 An RS-422/485 port, an RS-232C port, with a protocol macro function

单元名称 Name of Units	型号 Model
输入单元 Input Units	C200H-IA121/122/122V/221/222/222V C200H-ID211/212,C200H-IM211/212
输出单元 Output Units	C200H-OC221/222/222V/223/224/224V/225 C200H-OA121-E/223/222V C200H-OD11/211/212/213/214/216/217/21A
模拟定时器单元 Analog Timer Unit	C200H-TM001
高密度I/O单元 High-density I/O Units	C200H-ID501/215,C200H-OD215/501 C200H-IM215/215/501
模拟量I/O单元 Analog I/O Units	C200H-AD001/002/003 C200H-DA001/002/003/004,C200H-MAD01
模糊逻辑单元 Fuzzy Logic Unit	C200H-FZ001
温度传感器单元 Temperature Sensor Units	C200H-TC001/002/101/102
温度控制单元 Temperature Control Units	C200H-TC001/002/003/101/102/103
热/冷温度控制单元 Heat/Cool Temperature Units	C200H-TV001/002/003/101/102/103
凸轮定位器单元 Cam Positioner Unit	C200H-CF114
数据设定器 Data Setting Console	C200H-DSC01
PID控制单元 PID Control Units	C200H-PID01/02/03
位置控制单元 Position Control Units	C200H-RC113/132/211/113/213/413
高速计数器单元 High-speed Counter Units	C200H-CXD01-V1/002/021
ASCII 单元 ASCII Units	C200H-ASC02/112/131
ID传感器单元 ID Sensor Units	C200H-ID501-V1/121
语音单元 Voice Unit	C200H-OV001
运动控制单元 Motion Control Unit	C200H-MC221

## 致力于创立完美的生产系统，充实适应Windows 的编程软件

Versatile Software Running on Windows Makes It Possible to Construct the Ideal Production System

- 改变SYSMAC编程环境的软件出现在市场上，具有优良操作性及丰富多彩的功能，能够高效率地编制程序：

PLC编程工具：

**CPT**

Controller Programming Tool

Ensures ease of use and incorporates versatile functions, thus making it possible to write and edit ladder programs efficiently.

SYSMAC-CPT 是在Windows 3.1或Windows 95上运行的应用软件，能编制SYSMAC PLC的梯形图程序，并且对梯形图和助记符编程语言均可支持。  
The SYSMAC-CPT is an application running on Windows 3.1 or 95, making it possible to write SYSMAC controller ladder programs and supporting ladder and mnemonic languages.

- 操作优良的用户接口

应用Windows的GUI环境，提供易理解的图形界面和复制、粘贴功能，可用鼠标器方便地操作。

- Easy-to-use User Interface

The SYSMAC-CPT offers easy-to-see graphic images making use of the Windows GUI environment, provides an efficient copy-and-paste function, and ensures ease-of-use with the mouse.

- 集结了欧姆龙先进的技术  
欧姆龙的全球开发技术为我们提供了一个理想的Windows编程环境。SYSMAC-CPT是一个用户界面友好的软件产品，集成了丰富的功能。

- Futuristic Functions Available through OMRON's Unique  
OMRON's global development technologies have provided an ideal programming environment for Windows. The SYSMAC-CPT is a user-friendly software product that incorporates versatile functions.

- 丰富的编程功能  
助记符 / 梯形图输入和地址表功能

- A Variety of Programming Functions  
Mnemonic and ladder input and address workbook functions

- 监控和编辑  
PC的I/O存储器  
PC数据存储器

- Monitors and Edits  
I/O Memory Data and Data Memory of Programmable Controllers

- 丰富的检索置换功能  
检索功能和交替激活引用功能

- A Variety of Find and-replace Functions  
Find and cross-reference pop-up functions

- 丰富的调试和监控功能  
调试监控功能  
在线编辑功能

- Full-fledged Debugging and monitoring Functions  
Debugging, monitoring  
On-line edit functions



## 最适宜大规模机器的控制

The perfect PCs for large-scale Machine control

名称 Name	规格 Specification	型号 Model
CPU单元 CPU Units	512点梯形图专用(RAM 装载30K字, 上位链接内置) 512pts(30k words, host link)	CVM1-CPU01-EV2 CV500-CPU01-V1
	1024点梯形图专用(RAM 装载30K字, 上位链接内置) 1024pts(30k words, host link)	CVM1-CPU11-EV2 CV1000-CPU01-V1
	2048点梯形图专用(RAM 装载30K字, 上位链接内置) 2048pts(30k words, host link)	CVM1-CPU21-EV2 CV2000-CPU01-V1
CPU功能单元 CPU Special Units	Basic 单元 Basic Units	CV500- BSC11/21/31/41/51/61
	个人计算机单元 Personal Computer Units	CV500-PC21/31/217/223/227
	运动控制单元 Motion Control Unit	CV500-MC421
	温度数据链接单元 Temperature Controller Data Link Unit	CV500-TDL21

**SYSMAC**  
CVM1/CV500/CV1000/CV2000



## 采用新的显示器件，大型化使观察更方便

Using new show device with a good-sized screen, easily to be observed

- 运行在Windows95 下的中文化支持工具NTST  
Chinese Support Tool of running on the Windows 95

**NT31(C)**  
**NT631(C)**



名称 Name	规格 Specification	型号 Model
NT631	TFT彩色 TFT Colors	NT631C-ST151-E NT631C-ST151B-E
	STN彩色 STN Colors	NT631C-ST141-E NT631C-ST141B-E
	EL 高对比度 EL High Contrast	NT631-ST211-E NT631-ST211B-E
NT31	STN彩色 STN Colors	NT31C-ST141-E NT31C-ST141B-E
	STN单色 STN Black and White	NT31-ST121-E NT31-ST121B-E

# OMRON正在改进通信功能优化网络结构, 加速向数据化工场的方向迈进

OMRON is improving communications functions and spurring the construction of data networks to speed up the transition to the data-based workplace

网络 NETWORK	简介 INTRODUCTION	名称 NAME		型号 MODEL
以太网 ETHERNET	计算机与工作站之间对等的连接。 构筑OA情报网络的通信系统 Communications system that connects personal computers or workstations for establishing OA information.	以太网单元 ETHERNET Units		CV500-ETN01 C200HW-PC301
Controller Link系统 Controller Link system	采用双绞线电缆,实现SYSMAC单元之间, SYSMAC单元与计算机之间大容量的数据链接 Using twisted-pair cables, the system enables low-cost, large-capacity data link between a SYSMAC units or between a SYSMAC units and personal computers.	Controller Link 单元 Controller Link Units		CVM1-CLK21 C200HW-CLK21
		支持卡 Support Board	台式计算机卡及支持软件 ISA board W/support software	3G8F5-CLK21-E
		支持软件 Support Software	针对IBM PC/AT及其兼容机 For IBM PC/AT or compatible	SJ1DR-FGW95-CLKR-E
SYSWAY(上位 Link)系统 SYSWAY (Host Link) System	使用通用的RS-232C与RS-422通信手段,可容易地实现FA计算机或计算机与PC之间的连接。 Allows easy connection between FA computer or personal computers and the PC via general communications means such as the RS-232C or RS-422	链接单元 Link Units	光纤传输型 Optical Fiber Cables	C200H-LK101-PV1 3G2A5-LK101-PEV1 3G2A6-LK101-PEV1 C500-LK103-P 3G2A5-LK101-EV1 3G2A6-LK101-EV1 C500-LK103
			电缆传输型 Wire Cables	C200H-LK202-V1 C200H-LK201-V1 3G2A5-LK201-EV1 C500-LK203 3G2A6-LK201-EV1 3G2A6-LK202-EV1
CompuBus/D 系统 CompuBus/D System	遵循DeviceNet国际标准的CompuBus/D是一个国内外生产厂商的机器均可连接的多厂商网络。网络最长可达500米。 Conforming to the DeviceNet Multivendor Network, the CompuBus/D can be connected to various devices of different manufacturers worldwide. The network can be extended to a maximum of 500m.	主站单元 Master Units		CVM1-DRM21-V1 C200HW-DRM21-V1
		支持卡 Support Board	工控机支持卡 VME Board	3G8F3-DRM21-E
			台式计算机支持卡(提供运行在Windows或NT环境下的应用软件) ISA Board(provided with software running on Windows or NT)	3G8F5-DRM21-E
		便携式计算机支持卡(提供运行在Windows95环境下的应用软件) PC Card (provided with software running on Windows95)	3G8E2-DRM21-E	
CompuBus/S 系统 CompuBus/S system	可实现周期小1ms的高速ON/OFF通信总线。 High speed ON/OFF Bus that provides communications cycle time of less than 1ms.	主站单元 Master Units		C200HW-SRM21 CQM1-SRM21

## CPM2A

- 集先进的功能卓越的性能及小型化于一体  
适合于食品包装行业及传送带行业

Advanced functions and high-performance in a very small package, improved capabilities and higher added value for the food-packaging industry, conveyor industry.



## CVM1D

- CVM1D 不仅继承了CV/CVM1系列PLC的优点,并在具有高可靠性双机系统领域迈进了一大步。  
CVM1D 即可用于双电源的单机系统,又可用于双CPU,双电源的双机系统中。  
双机系统比传统的CV/CVM1系列PLC具有更高的可靠性。  
CVM1D programmable controllers inherit the advantages from the CV/CVM1 series and go a step further by incorporating double system for higher reliability. These PCs are available as a simplex system with double Power Supply Units or as a duplex system with double Power Supply Units and CPU Units. Duplex system offer even higher reliability than conventional CV/CVM1 series systems.



名称 Name	模块型号 Model number
CPU单元 继电器输出 带RS-232C接口 CPU Units with Relay Outputs Built - in RS-232C port	CPM2A-30CDR-A
	CPM2A-30CDR-D
	CPM2A-40CDR-A
	CPM2A-40CDR-D
	CPM2A-60CDR-A
	CPM2A-60CDR-D
CPU单元 晶体管输出 带RS-232C接口 CPU Units with Transistor Outputs Built - in RS-232C port	CPM2A-30CDT-D
	CPM2A-30CDT1-D
	CPM2A-40CDT-D
	CPM2A-40CDT1-D
	CPM2A-60CDT-D
	CPM2A-60CDT1-D
I/O扩展单元 Expansion I/O Units	CPM1A-8ED
	CPM1A-8ER
	CPM1A-8ET
	CPM1A-8ET1
	CPM1A-20EDR1
	CPM1A-20EDT
	CPM1A-20EDT1
现场总线链接单元 Composbus's I/O Link Unit	CPM1A-SRT21
模拟量输入输出单元 Analog I/O Unit	CPM1A-MAD01

名称 Name	型号 Model number
CPU单元 (CPU Unit)	CVM1D-CPU21
双机单元 (Duplex Unit)	CVM1D-DPL01
CPU底板 (CPU Backplane)	CVM1D-BC051
扩展CPU底板 (Expansion CPU Back plane)	CVM1D-B1101
扩展I/O底板 (Expansion I/O Backplane)	CVM1D-B1102
电源单元	CVM1D-PA208
	CVM1D-PA212
编程器	CVM1-PR521-VI