

生态明珠 城口
ECO-PEARL
中国·重庆·城口 Chengkou
Chengkou · Chongqing · China

中共城口县委 城口县人民政府
CPC Chengkou County Committee People's Government of Chengkou County





CONTENTS 目录

走进城口 Welcome to Chengkou	02	红色城口 Red of Chengkou	08	资源城口 Resources of Chengkou	12	生态城口 Ecology of Chengkou	20	人文城口 Humanism of Chengkou	32	宜居城口 Residence of Chengkou	36	希望城口 Hope of Chengkou	50
-----------------------------	----	-------------------------	----	-------------------------------	----	-----------------------------	----	------------------------------	----	-------------------------------	----	--------------------------	----



CONTENTS 目录

走进城口 Welcome to Chengkou	02	红色城口 Red of Chengkou	08	资源城口 Resources of Chengkou	12	生态城口 Ecology of Chengkou	20	人文城口 Humanism of Chengkou	32	宜居城口 Residence of Chengkou	36	希望城口 Hope of Chengkou	50
-----------------------------	----	-------------------------	----	-------------------------------	----	-----------------------------	----	------------------------------	----	-------------------------------	----	--------------------------	----

WELCOME TO

走进

CHENG KOU

城口

ECO-PEARL

生态明珠

城口，一片神奇而美丽的土地；城口，充满着无限的希望和机遇。走进城口，您会感受到，这是一个开放的天地；走进城口，您会感受到，这是一方投资的热土；走进城口，您会感受到，这是一片充满发展生机的乐园……

朋友，重情好客的城口人民欢迎您！

Chengkou, the land of beauty and miracle; Chengkou, the soil of hope and opportunity. As of your first step on the land of Chengkou, you will sense its openness, investment potentials and vigorous development...

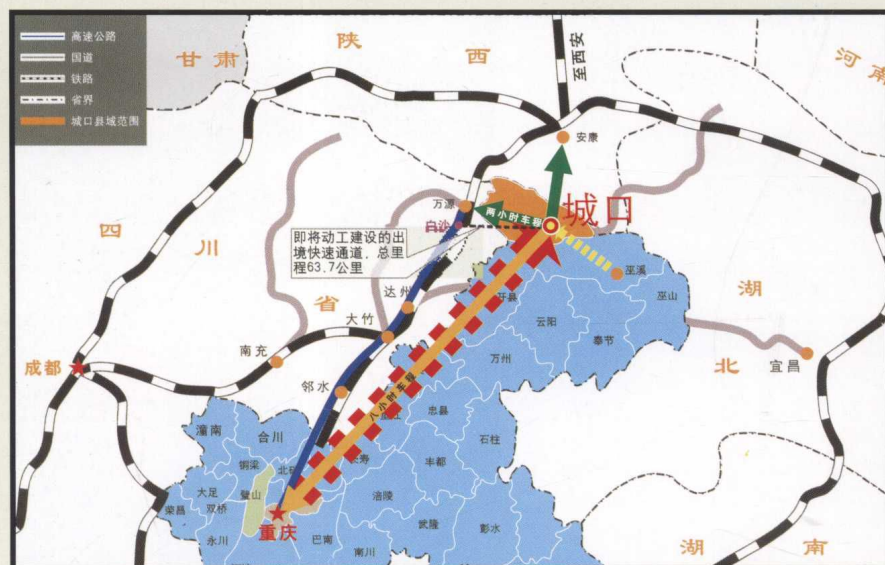
Dear friends, the warm and hospital people of Chengkou welcome you.

城口位置图
LOCATION MAP OF CHENGKOU



城口区位优势交通图

TRAFFIC MAP OF CHENGKOU



城口现有公路里程1319公里，100%的乡镇、71%的村通公路。城万路、城开路、城岚路、城巫路贯穿全境，初步构成了东进西出、南下北上的“十字型”公路主骨架。形成了东进巫溪进入大三峡旅游金三角，西出万源通达西南诸省，南下开县直抵三峡库区和重庆主城，北上岚皋达西安连接古丝绸之路的交通网络。到“十一五”末，将重点贯通城口至陕西岚皋的大巴山隧道和建成连接达陕高速公路的“城万”快速通道，争取国家干线或支线铁路过境城口。

Today, the highway length has reached 1,319km, and 100% of towns and 71% of villages are highway-connected. Chengwan Rd., Chengkai Rd., Chenglan Rd. and Chengwu Rd travel through the whole county, which primarily constitute the main highway frame in cross form of Entrance from East, Exit from West, and Southward and Northward Access. On the east, one can get into the Wuxi Creek, the threshold of Grand Three Gorges Delta for tourism, while on the west, one can get to southwestern provinces apart from Wanyuan; and the south extends downward straight to the edge of Three Gorges Reservoir and the main area of Chongqing city, while north goes upward to Xi'an via Langao and meets the ancient Silk Road. By the end of 11th Five-year Plan phase, the traffic works will be focused on the construction of Dabashan Tunnel which runs from Chengkou to Langao, Shaanxi, and of the Chengwan Fast Track which links to the Dashan Expressway. In addition, Chengkou is striving for the transit of national trunk or branch lines of railway.



畅通的境内公路

交通》 TRAFFIC



城口概况

Summary

OF CHENGKOU

城口地处大巴山南麓，重庆市最北端，县境界于东经108° 15′ 至109° 16′，北纬31° 37′ 至32° 12′ 之间，东面和北面分别与陕西镇坪、平利、岚皋、紫阳接壤，南与本市巫溪、开县交界，西与四川万源、宣汉县相连。全县辖24个乡镇，人口23.89万人，幅员面积3294.4平方公里。

城口是川陕革命根据地的重要组成部分，重庆市唯一成建制建立苏维埃政权的革命老区。境内有各类植物4300余种，有崖柏、红豆杉、珙桐等国家一级保护植物6种；有国家级自然保护区和国家级森林公园各一个；有矿产资源20余种，锰矿储量2500多万吨，属全国五大矿区之一；钡矿储量6470多万吨，居亚洲之首；煤碳可开采量1.95亿吨；水能可开发量45万千瓦；城口核桃、板栗、中药材、老腊肉、山地鸡、鸡鸣茶、山神漆器、海宝玉等名特产品久负盛名。

直辖十余年，城口经济社会取得长足发展，但仍是国家扶贫工作重点县。在全面建设小康社会进程中，城口将依托丰富的生态资源，实施“生态为本，特色为魂”的发展战略，促进“人口下山，产业上山”，努力建成生态功能保障区、重庆向北重要门户、红色旅游和生态旅游基地、重要生态经济区。

Chengkou is situated at the southern extension of Dabashan Mountain and the northernmost Chongqing city, within the area enclosed by longitude 108° 15′ to 109° 16′ east, latitude 31° 37′ to 32° 12′ north. Its east and north respectively border on the Zhenping, Pingli, Langao and Ziyang, Shaanxi; while south is adjacent to the Wuxi Creek and Kaixian County with west joins the Wanyuan and Xuanhan counties, Sichuan. Together 24 towns are under Chengkou's jurisdiction, and the number of population is 238, 900 living in the territory sized 3,294.4 square kilometers.

Chengkou is the major part of Chuanshaan Revolutionary Base, the only place where Soviet regime was ever founded in Chongqing. There are over 4,300 different kinds of plants in Chengkou, such as Yabai cypress, yew and Chinese dove tree, etc. together 6 species under class-one state protection; one national nature reserve and one national forest park; more than 20 types of minerals including 25 million tons of manganese reserves, being one of the top five mining areas for the same nature; more than 64.7 million tons of barium reserves, ranking first in Asia; about 195 million tons of coal reserves exploitable; and about 450 mW hydraulic energy exploitable. Besides, a series of famous and special local products, like walnut, chestnut, Chinese herbal medicines, preserved ham, pheasant, Jiming tea, Shanshen lacquerwork and Haibao jade are yielded.

Over ten years above state being under direct administrative jurisdiction, the local economy has made great progress, however, Chengkou has been still on the list of major counties for poverty reduction in China. In the course of building an affluent society, Chengkou will implement the development strategy themed in Ecological Concern, Specialized Guideline dependent on the rich ecological resources to promote the movement of “Population Goes Down Hill with Industry Up” and build Chengkou into an ecological security zone, the important northern gate of Chongqing, red and ecological tourism bases and the important ecological economic zone.

Summary OF CHENGKOU



RED OF 红色城口

CHENG KOU

ECO-PEARL 生态明珠

城口，是川陕革命根据地的重要组成部分，是重庆市唯一成建制建立县、区、乡、村苏维埃政权的老区县，重庆市第一个打出地方红军旗帜的县，第一个被地方红军解放县城的县，第一个迎来中国工农红军主力部队的老区。在这片红色的土地上，城口人民为中国革命做出了巨大的牺牲和贡献，共和国的旗帜上有城口儿女血染的风采！

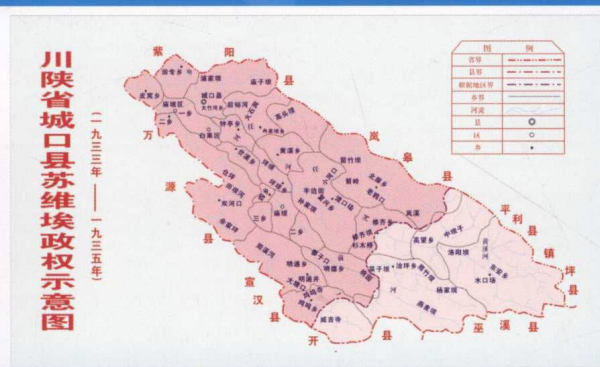
In the past time, Chengkou was the major part of Chuanshaan Revolutionary Base and the only location where organizational structure was formed into county, district, country and village under Soviet regime in Chongqing, the first county in Chongqing where local Red Army flag was raised, the first county liberated by local Red Army and the first one among the old revolutionary bases received the main force of the Workers and Peasants' Red Army of China. In this red land, the Chengkou's people contributed great sacrifice and devotion and served the national flag with their blood.



巴山星火



川陕苏区城口纪念馆



川陕省城口县苏维埃政权示意图



川北苏区老根据地红烈军属赴京代表合影



中央访问团与老根据地军人家属及残疾军人合影



红三十三军挥师城口

发扬革命传统
夺取更大光荣

毛泽东



城口县苏维埃政权纪念碑



随处可见的苏区标语

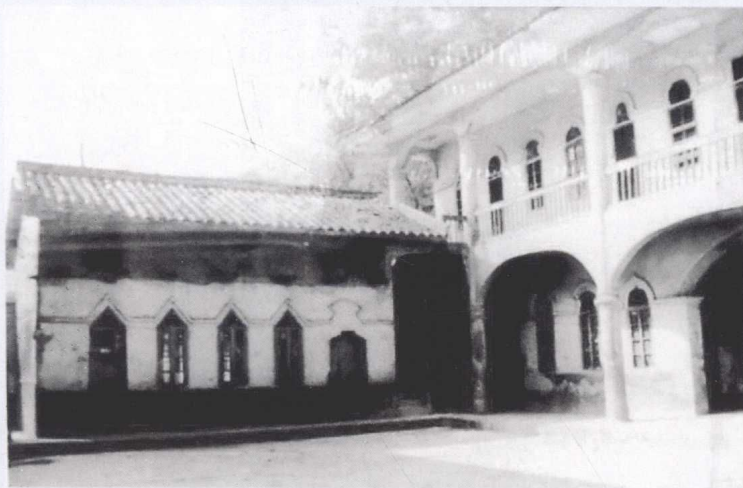


朱家寨战斗遗址



空壳洞战斗遗址





红三十三军二九七团庙坝小学指挥部



城万红军指挥部



岔溪河乡苏维埃旧址



红军药房

1933年10月，中国工农红军第四方面军挥师城口，开辟了城口苏区，城口成为川陕革命根据地的重要组成部分。红四军、九军、三十军、三十一军、三十三军分别在城口战斗过，李先念、徐向前、王维舟等老一辈无产阶级革命家在这里留下了光辉的足迹。当年，3000多城口儿女参加了红军和赤卫队，500多人参加了长征。县内有多处红军活动遗址、遗迹和革命文物留存，红色旅游资源十分丰富。

In Oct., 1933, the Fourth Front of Workers and Peasants' Red Army of China marched into Chengkou and founded Soviet regime, incorporating it into the Chuanshaan Revolutionary Base as a major part. Chengkou was ever the battlefield where the 4th, 9th, 30th, 31st and 33rd Red Armies fought the enemies with the glory footprints left by Li Xiannian, Xu Xiangqian and Wang Weizhou and other old-generation proletarian revolutionists. In those days, more than 3,000 Chengkou's brothers and sisters joined the Red Army and Red Guards, over 500 people took part in the Long March. There are many relics testifying the actions carried out by the Red Army as well. It is rich in red tourism resources.



红军时期的李先念



红四方面军总指挥徐向前



战争时期的王维舟

RESOURCES OF

资源

CHENG KOU

城口

ECO-PEARL

生态明珠

城口，旅游资源魅力无穷、水利资源得天独厚、矿产资源量大质优、林业资源极其丰富、名特产品名扬中外……在这方富饶而美丽的土地上，开放的城口孕育着无限的商机和广阔的发展前景。

Chengkou, charming tourism, rich hydraulic energy, enormous minerals with good quality, abundant forest and famous local products known to the world.... In this rich and beautiful land, the opening Chengkou provides endless business opportunities and broad prospect for development.

水能资源»

Hydraulic

RESOURCES

城口地表水系发达，北部为汉江流域的任河水系，南部为嘉陵江流域的前河水系。全县有大小河流779条，其中集雨面积超过100平方公里的有13条，水能蕴藏为60万千瓦，可开发量为45万千瓦，开发潜力很大。

The surface water system in Chengkou is highly developed. On the north, flows the Renhe River system within the Hanjiang River watershed, while on the south, the Qianhe River system within the Jialingjiang River watershed. In the whole county, the number of big and small rivers is 779, 13 out of them cover more than 100 square kilometers respectively. The hydraulic energy reserves are estimated to be 600 mW with 450 exploitable, huge potential for development.



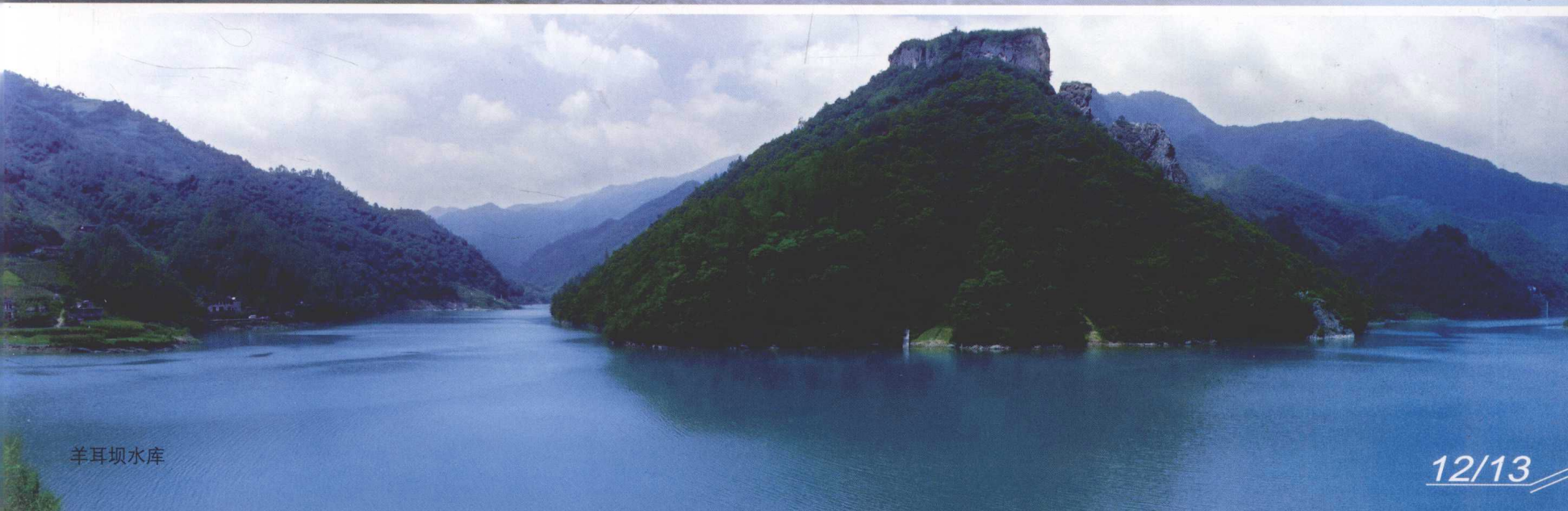
220KV输变电路



高平坎110KV变电站



建设中的巴山水电站大坝



羊耳坝水库

矿产资源

Mineral

RESOURCES

城口矿藏资源十分丰富，已发现的矿藏有铁、锰、钡、铅、锌、煤、白云石、石膏、大理石、古生物化石、铂钯金矿等20多种矿产。其中，城口锰矿储量达2500多万吨，是全国五大锰矿区之一；钡矿储量6470多万吨，名列亚洲之首；煤矿可开采量达1.95亿吨。

Chengkou reserves ample minerals with iron, manganese, barium, lead, zinc, coal, dolomite, plaster, marble, ancient biological fossil and platinum and palladium, more than 20 kinds, discovered. Among them, the manganese reserves arrive at 25 million tons, ranking top five throughout the country, 64.7 million tons of barium, topping Asia and 195 million tones of coal exploitable.



锰矿



大理石矿



氢氧化钡



金泰电冶



五洲锰业



钢水冷却



钢花四溅