

pudong treasure land



CHUANSHI





中共川沙縣委書記

韓坤林

Han Gunlin, County Secretary of the Chinese Communist Party

當您在上海外灘登高向東遠眺，映入眼簾的是黃浦江東岸一大片美麗富饒的土地，這就是舉世矚目的浦東寶地。川沙縣就在這塊寶地的中心部位，整個浦東開發區350平方公里，312平方公里在川沙縣境內。川沙是開發浦東的主戰場，從某種意義上講，開發浦東，也就是開發川沙。

浦東寶地，人杰地靈，名人輩出，風光秀麗，氣候宜人，土地肥沃，物產豐富。川沙縣總面積446平方公里，人口62萬，設有3個縣屬鎮，26個鄉。

川沙依托上海市區，城鄉聯系密切，工農業有悠久歷史，“三把刀，一根針”蜚聲中外，名優特產早有威名，素有“毛巾之鄉”、“奶牛之鄉”、“花木之鄉”的美稱。刺繡、花邊等手工藝品早在1914年就榮獲菲律賓嘉華年會最優等獎。新中國成立以後，特別是中共十一屆三中全會以來，川沙的經濟如虎添翼，傳統產品推陳出新，新興工業相繼崛起，外向型經濟迅猛發展，第三產業興旺發達，1990年工農業總產值達到62.3億元，出口產品成交額達到12.7億元，財政總收入達到4.22億元，分別比1978年增長7.7倍、32倍和2.8倍。

隨着浦東新區開發建設進程加快，一個國際第一流新型城市將在川沙這片土地上崛起，前景十分美好。川沙人民正滿懷希望和信心，堅持改革、開放的方針，圍繞經濟建設這個中心，做好“參與浦東開發”、“發展外向型經濟”和“科技興縣”三篇“大文章”，積極為建設浦東新區作貢獻。在浦東開發中，我們遵循“服從、服務、參與”六字宗旨，創造良好的投資環境，實行各種優惠政策，熱忱做好服務工作。

我們謹將這本畫冊奉獻給您，望能有助於您對川沙這塊寶地的了解。川沙人民真誠歡迎國內外朋友前來和我們共同開拓耕耘，共同描繪浦東新區的宏圖，願您在這塊寶地上獲得理想的收穫，留下創業的足跡。

Staring eastward from a tall building along the Bund, You'll find a vast land of beauty far beyond the Huangpu River. This is pudong district—a promising land of worldwide attraction. Here, in the heart of this land is Chuansha County. The pudong Development Zone owns 350 square kilometers of land, of which 312 is in Chuansha County. So, to some extent, the development of pudong is the development of Chuansha. Chuansha plays a leading role in the development of pudong. pudong is a treasure land: its landscape so beautiful, its weather so pleasant, its farmland so fertile, its products so abundant, and its celebrities so many. Chuansha County covers an area of 446 square kilometers, consists of 3 towns and 26 townships. and it has a population of 620,000.

Due to its closeness to the downtown area, intimate relations are established between the County and the metropolis.

Historically, the County has been famous for its industrial and sideline products. Its '3 knives and 1 needle' (i.e. house building, cookery, sewing and embroidery) are universally acclaimed. Its products have won good reputations for their quality. It has good names - hometown of towels, cow and flowers. Its handcrafts of embroidery and lace won the award of best at the philippine Jia Hua Annual Trade Fair as early as 1914. The County's economy has gained new vigorous strength since the founding of the People's Republic and especially, since the Third Plenary Session of the Eleventh Central Committee of the Party. Industries of advanced technologies have sprung up. New Products have been brought out from the traditional old ones. The export-oriented economy develops fast and steadily. The third industries are prospering. In 1990, the gross industrial and agricultural value reached 6.23 billion yuan (1.69 billion); the value of export goods of assignment amounted to 1.27 billion yuan (0.24 billion); and the financial revenue hit 422 million yuan (79 million). The growth rates of the above three items are 7.7, 32 and 2.8 times that of 1978 respectively.



王洪泉縣長

王洪泉

Wang Hongquan, Magistrate of Chuansha County

At the development of the Pudong New Area speeds up, Chuansha will become a New top-rate international city. Under the directions of 'reform and open door' policies, the Chuansha people, full of hope and confidence, take the economy construction as their most important task. They are determined to do their best at the three tasks of 'participating in the development of pudong', 'promoting the economy of exportation' and 'improving the County's economy by scientific and technologic measures'. In developing pudong, we will adhere to 3 guiding principles - 'conformity, service and participation' - to create an excellent investment environment. We will carry out the preferential policies and offer our best services to you. Together with friends home and abroad, we will draw a beautiful picture for the development of the NEW AREA.

with good will, we dedicate this pictorial to you, and hope it will help you to understand Chuansha a little more.

WELCOME, WARMLY WELCOME FRIENDS FROM HOME AND ABROAD to develop pudong with us. We wish satisfactory success to you. the foot print of pioneers will be remembered forever and ever.



Historically, the County has been famous for its industrial and sideline products. Its '3 knives and 1 needle' (i.e. house building, cookery, sewing and embroidery) are universally acclaimed. It's products have won good reputations for their quality. It has good names - hometown of towels, cow and flowers. Its handicrafts of embroidery and lace won the award of best at the philippine Jia Hua Annual Trade Fair as early as 1914. The County's economy has gained new vigorous strength since the founding of the People's Republic and especially, since the Third Plenary Session of the Eleventh Central Committee of the Party. Industries of advanced technologies have sprung up. New Products have been brought out from the traditional old ones. The export-oriented economy develops fast and steadily. The third industries are prospering. In 1990, the gross industrial and agricultural value reached 6.23 billion yuan (1.69 billion); the value of export goods of assignment amounted to 1.27 billion yuan (0.24 billion); and the financial revenue hit 422 million yuan (79 million). The growth rates of the above three items are 7.7, 32 and 2.8 times that of 1978 respectively.

As the development of the Pudong New Area speeds up, Chuansha will become a New top-rate international city. Under the directions of 'reform and open door' policies, the Chuansha people, full of hope and confidence, take the economy construction as their most important task. They are determined to do their best at the three tasks of 'participating in the development of pudong', 'promoting the economy of exportation' and 'improving the County's economy by scientific and technologic measures'. In developing pudong, we will adhere to 3 guiding principles - 'conformity, service and participation' - to create an excellent investment environment. We will carry out the preferential policies and offer our best services to you. Together with friends home and abroad, we will draw a beautiful picture for the development of the NEW AREA.

With good will, we dedicate this pictorial to you, and hope it will help you to understand Chuansha a little more. WELCOME, WARMLY WELCOME FRIENDS FROM HOME AND ABROAD to develop pudong with us. We wish satisfactory success to you. The foot print of pioneers will be remembered forever and ever.



川沙縣縣長

王洪泉

Wang Hongquan, Magistrate of Chuansha County





1. 1990年4月15日李鵬總理在朱鎔基市長等陪同下，乘船視察浦東外高橋新港區選址，審閱上海浦東開發規劃地圖。

1. April 15, 1990, Premier Li Peng, accompanied by Mayor Zhu Rongji, Took Ship and Viewed Pudong Outer Gaoqiao to Inspect the Planing Maps of Shanghai Pudong Development

2. 上海市委副書記倪鴻福題字：開發浦東 振興川沙

2. Inscription by Deputy mayor of Shanghai Ni Hongfu

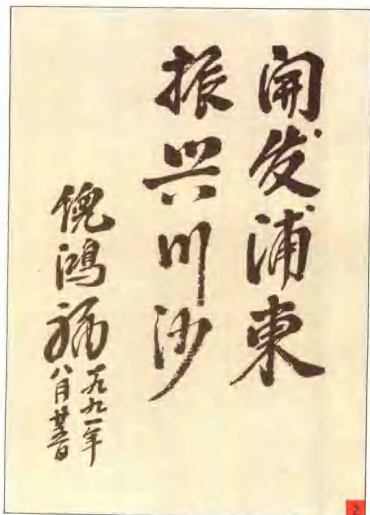
3. 縣人民政府辦公大樓

3. Office Building of People's Government of Chuansha County

4. 縣人民政府浦東開發辦公室

4. Pudong Development Office of People's Government of the County





上海浦东图书馆藏书



A286361800183738

目次 CONTENTS

得天獨厚的地理環境 6

GEOGRAPHIC ENVIRONMENT RICHLY ENDOWED BY NATURE

物沛年豐的魚米之鄉 12

A LAND OF PLENTY WITH ENOUGH PROPERTY AND BUMPER HARVEST YEARLY

異軍突起的出口創匯 18

EXPORTATION, THE NEW FORCE SUDDENLY COMING TO FORCE

生機勃勃的工業生產 26

THE INDUSTRIAL PRODUCTION FULL OF VITALITY

比翼雙飛的聯營企業 38

COOPERATIVE ENTERPRISES FLYING SIDE BY SIDE

方興未艾的三資企業 46

FOREIGN INVESTED ENTERPRISES IN THE ASCENDANT

日新月異的城鄉面貌 52

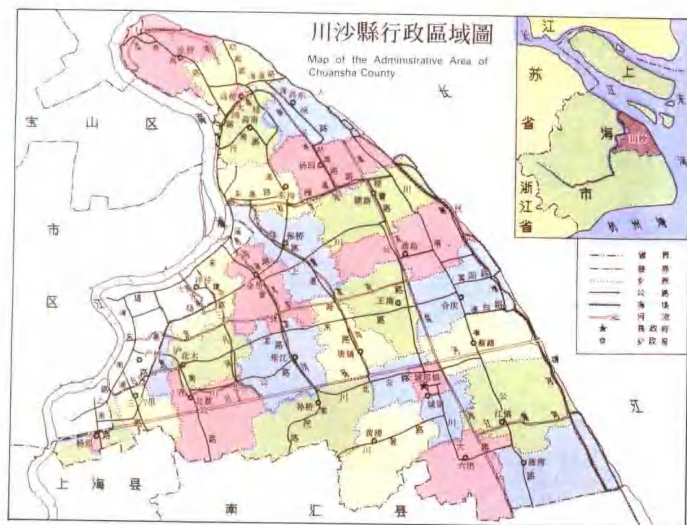
THE SCENE OF TOWNS AND COUNTRYSIDE CHANGING EACH PASSING DAY

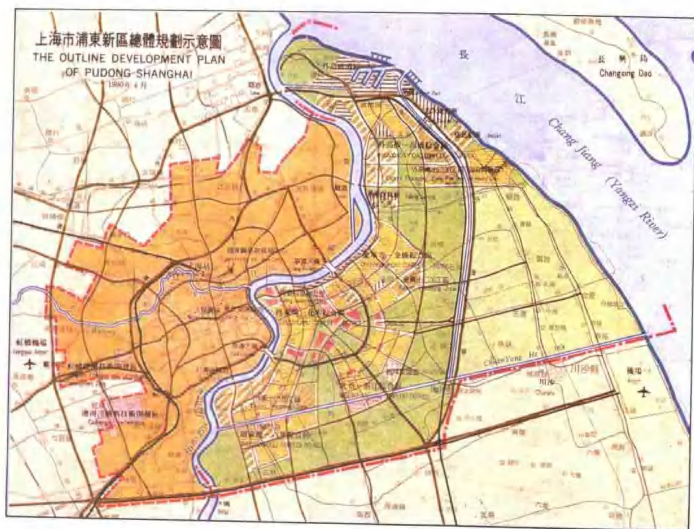
朋友，川沙歡迎您！ 64

FRIENDS, WELCOME TO CHUANSHA!



GEOGRAPHIC ENVIRONMENT



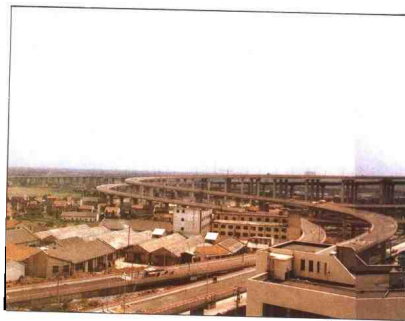


GEOGRAPHIC ENVIRONMENT

川沙縣位于長江三角洲前緣，西靠黃浦江，東瀕長江，
境內公路、河道四通八達，交通十分便捷。延安東路隧
道和打浦路隧道的開通，大大縮短了川沙與市區的距離，南
浦大橋和正在興建的楊浦大橋，猶如天橋架通途，更把川沙
與市區緊密連接在一起。從市中心驅車到川沙縣城只需半
個多小時。

全縣通訊基本實現自動化，電話、電報、傳真可直撥，直
達國內外。水、電供應充足，煤氣工程也已發生效用。從市區
至長江口的南區和北區兩條污水排放管道橫貫川沙全境。

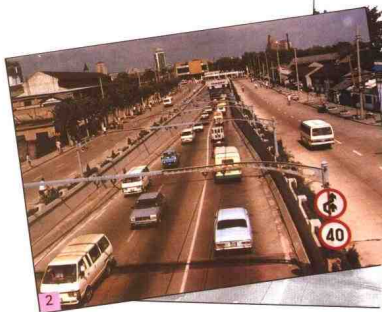
中央決定開發浦東和給予浦東開發區的優惠政策，更
使川沙成了一個十分理想的投資場所。



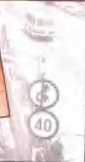
Chuansha County is along the front of the
Yangtze River estuary, bordering the Huangpu
River on the west and the mouth of the Yangtze
River in the east. With highways and rivers
crisscrossed, the transportation is very convenient.
Since the Yan'an Dong Lu and the Da-pu Lu
tunnels were opened to traffic, the distance between
Chuansha and the down-town area has been
shortened greatly. Moreover, the Nanpu Bridge and
the Yang-pu Bridge that is under construction, will
connect the two even more closely. It takes you only
30 minutes to drive from the metropolitan centre to
Chuansha.

The automation of the telecommunications of the
county has reached a very high degree. Through
program-controlled exchanges, calls, telegrams and
faxes can be sent directly to anywhere home and
abroad. The supply of water and electricity is
sufficient, and the gas works has been put into
operation. The southern and northern sewage dis-
charge pipelines coming from Shanghai proper to the
mouth of the Yangtze River pass through the county.

The decision by the Central Committee of The
Chinese Communist Party and the preferential po-
licies given by the state make Chuansha to be very
ideal place for investment.



1. 南浦大橋
2. 延安東路隧道
3. 打浦路隧道
4. 鹽川公路
5. 川沙火車站
6. 川沙內河航運



1. Nanpu Bridge
2. Yan'an Road (east) Tunnel
3. Dapu Road Tunnel
4. Tangchuan Road
5. Chuansha Bus Station
6. Inland water transport in Chuansha



GEOGRAPHIC ENVIRONMENT





6



7

1. 川楊河
2. 川沙汽車運輸公司
3. 浦東煤氣廠
4. 排汙工程
5. 變電所
6. 大壩倉儲
7. 外國駐滬領事參觀外高橋港口
8. 川沙通訊微波塔

1. Chuanyang River
2. Chuansha Vehicle Transport Company
3. Pudong Gas Works
4. Sewage Discharge Project
5. Transformer Substation
6. Dawan Storage
7. Foreign Consul to Shanghai is visiting Outer Gaoqiao Port
8. Chuansha Microwave Telecommunication Tower



8

A LAND OF FISH AND RICE

川沙農業。近幾年來調整了種植結構，秋熟以種植優質梗稻為主，畝產水平在市郊領先。夏熟以種植小麥、油菜為主，農業現代化水平較高。80%以上的田間作業已由機械操作，林牧副漁全面發展，全縣有近十萬畝設備完善的蔬菜種植基地，770多個飼養豬、禽、奶牛的集體畜牧場和2700多個養豬專業戶，為城市提供蔬菜、豬肉、禽蛋、牛奶和水產等各類副食品，成為上海市“菜籃子工程”的主要生產基地和農副產品出口創匯基地之一。

Chuansha has readjusted its farming structures in recent years. For the Autumn harvest, the high-quality paddy-rice is the main crop and its yield per mu is the highest among neighboring counties. In Summer, the principal harvest is wheat and rape. The modernization of agriculture has reached a rather high degree, more than 80% of farmworks have been mechanized. Forestry, husbandry, sideline production, and fishery are developing comprehensively. The County now has a well furnished vegetable plantation base of 4,000 mu (666.7 acres) as well as 770 pig, fowl and milk cow raising collective farms, and 27,000 households specialized in pig-breeding. They provide the city-dwellers with all kinds of non-staple foodstuffs, including vegetables, meat, eggs, milk and aquatic products, etc. Now, the county has become the main production base of the Shanghai "Vegetable-Basket Project" and an main production base for exportation of agricultural and sideline products.



1. 江澤民同志視察川沙
2. 豐產農田
3. 機械收割
4. 花菜
5. 蕃茄
6. 黃瓜
- 7-8. 大棚蔬菜





2

3

- 1 Jiang Zemin Inspecting Chuansha
- 2 Farmland of High Output
- 3 Reaping by Machine
- 4 Cauliflowers
- 5 Tomatoes
- 6 Cucumbers
- 7-8 Vegetables in Green House



7



8

A LAND OF FISH AND RICE



1



2



3

- 1. 蛋雞
- 2. 肉鴨
- 3. 豬場
- 4. 奶牛
- 5. 蟹
- 6. 異育銀魚
- 7. 瘦肉豬
- 8. 蟹
- 9. 淡水白昂魚

- 1 Layers
- 2 Meat Ducks
- 3 Pig Farm
- 4 Cows
- 5 Crabs
- 6 Silver Crucian Carps
- 7 Pigs of Lean Pork Meat
- 8 Soft Shelled Turtles
- 9 Fresh Water Silver Pomfrets



5



7



A LAND OF FISH AND RICE

