

鄱阳湖国家湿地公园

P O Y A N G L A K E W E T L A N D P A R K

李哲民摄影作品选



鄱阳湖国家湿地公园

P O Y A N G L A K E W E T L A N D P A R K

李哲民摄影作品选





鄱阳湖水位站
WUJIANG WATER LEVEL STATION
(鄱阳湖水位站 鄱阳湖水位站)

www.poyanghu.cc

One Lake, To Be For The World

—The National Wetland Park of Poyang Lake

The National Wetland Park of Poyang Lake is the biggest fresh water lake and wetland park in China, which is situated on the east coast of Poyang Lake and in the Chinese Poyang county. Poyang Lake National wetland park is located in the north of Jiangxi Province and the west of Shangrao, at the confluence of Rao River and Zhangtian River. It borders on Mt. Lushan in the West and faces Mt. Huangshan on the north, east to Mt. Sanqing and south to Mt. Longhu. The total area of the wetland park is 36285.0 hectares, the total area wetland is 35116.1 hectares and accounts for 96.8% of the total acreage. It is one of the six big wetlands in the world and the biggest wetland park in Asia, and the species of which is richest, the landscape is the most beautiful and the wetland culture is the deepest in Asia.

The main landscape of the national wetland park of Poyang Lake is natural wetland, including Poyang Lake, rivers, grass, mudflats, islands, washland, ponds and so on, the wetland resource is rich and the type is numerous, which is extremely representative. In the wetland park, the migrant bird is also favorite and Poyang Lake is the biggest winter place for white crane and the swan and also a kingdom of white crane in the world, the white crane here accounts for over 98% of the global total and every year several hundred thousand swans come here for winter, and the scene is magnificent, thus British Crown Prince Philip said that: it is "the China's second Great Wall".

The planning total area of the national wetland park is 362 square kilometers and the total investment is over 10,000,000,000 Yuan, which has been zoned as: a city, seven districts and two corridors: "a city" is the Cultural Water City Of Poyang Lake, "seven districts" are the Waterfowl Habitat Protection And Conservation Area Of Hanchi Lake, Natural Wetland Exhibition Area Of White Sandbar, Water Source Wetland Protection Area Of Zhu Lake, Artificial Wetland And Comprehensive Utilization Area Of Qingshan lake, Management And Service Area Of Cultural Water City Of Poyang Lake and so on, and "two porches" are the green corridor from white sandbar dike to Yangtze River flood prevention dike and the blue corridor between county, Shangtou lake, Qingshan lake and Zhu lake.

The National Wetland Park of Poyang Lake: The park here has the thickest "lake" of south of Yangzi River, and also the noblest "bird", the most beautiful "water", the tenderest "reed" and also the most poetic "grass".

The thickest "lake"

There are 1087 lakes in Poyang which is full of various lakes with peculiar flavor and glistening water and honored as "Lake City of China" and "Venice of the East",

with fleecy white clouds and beautiful smog wave provided by nature

The noblest "bird"

98% wetland migrant bird population of the world all collect here, shading the cloud and sun while flying, and shading the grass while falling. In the world the extant white crane is more than 4000, and 98% white cranes and hundreds of thousands of swans will choose Poyang Lake for the winter, which is called "wonder under heaven" and "white crane's heaven and swan's hometown"

The most beautiful "water"

In rainy season, water and sky here become the same color and melded together, vast is the mountain and boundless the water, with many people in the river; in dry season, little creeks wind on the broad grassland and the gulls sleep with Xucha at night, with cooking smoke in the early morning from ship in the west

The tenderest "reed"

During the fall, the sky is filled with pieces of reed and snow and the migrant birds set there, which is just like a fairyland. Nobody is to seek the Huanyi flute, but blow the reed leaf. When spring is changing into summer, it becomes a vast reed sea with a magnificent spectacle, the reeds gradually increasing and people becoming few, it looks like the water and sky are on the same horizon. And there are "blue sky", "sweet air", "undisciplined cows", and "leisurely and carefree cowboys,"

The most poetic "grass"

There is a great grassland which is the most distant, grandest, gentlest and most poetic in south of Yangzi River, by Poyang Lake and nearby the Yangtze River, with the fragrant green grass connecting with the blue sky. The luxuriant grass becomes over knees every spring, fall and winter. And the reed clump, the migratory bird and the cattle and sheep can be seen everywhere as soon as the winter arrives, which make people forget to return. It is the first choice for natural ecological travel and is honored as "the Chinese most beautiful prairie" and "the Chinese final prairie"

The Poyang Lake is of vast wave and great momentum and there are many rivers in the wetland park, with brooks, farmland and reeds, here and there. The beautiful scenery, pleasant environment and fresh air mix together with the nimbus of beautiful mountain and clear water, which form a natural and humanistic landscape. The wetland park integrates many resources of cultural landscape, such as wetland culture, culture of migrant birds, agricultural culture, diet culture and so on, which create a Wetland Tourism Landscape with cultural landscape in various styles.



江西鄱阳湖国家湿地公园总体规划

湿地资源现状分布图



SHI DI YE WANG

万顷绿洲 生机盎然

WAN QING LY ZHOU SHENG JI ANG RAN



鄱阳湖，据水文资料记载，她的面积在上世纪50年代为5100平方公里，1998年7月（吴淞高程湖口水位22.48米）界线面积为5181平方公里，是中国最大的淡水湖泊，亚洲最大的淡水湿地，其中鄱阳县所辖面积为400余平方公里，是中国湿地面积最大，湿地物种最丰富，湿地景观最美丽，文化最厚重的国家级湿地公园。湿地公园一年四季都有着她娇美的身姿和迷人的韵律。

湿地野望

春季：百花齐放 生机盎然

夏季：千帆竞发 浩瀚无际

秋季：万里草洲 芦花飞舞

冬季：百鸟争鸣 和谐吉祥





金 秋

拍摄地点：南口湖

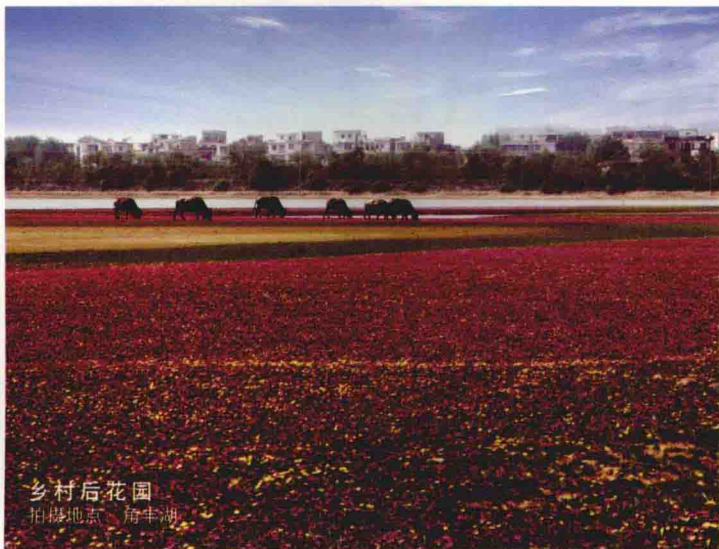


天堂
拍攝地點：龜山湖



春 芽

拍摄地点：乐安河



乡村后花园

拍摄地点：角丰湖



蛇岛生辉

拍摄地点：蛇岛

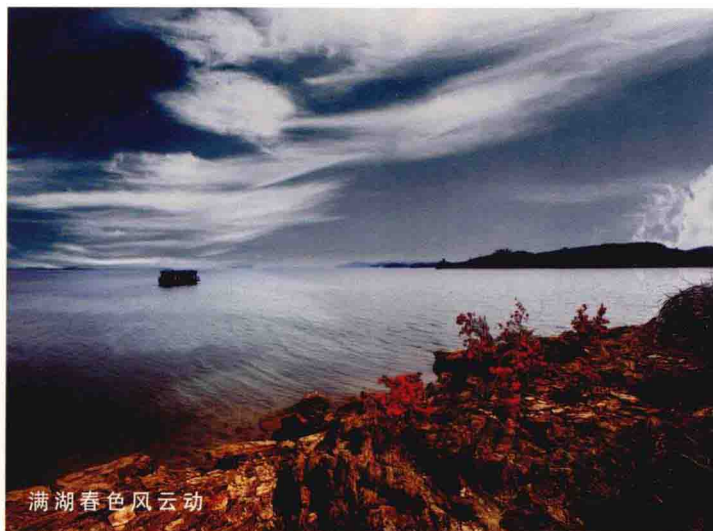


生 机

拍摄地点：南湾湖



春染礼恭脑



满湖春色风云动



湿地风云

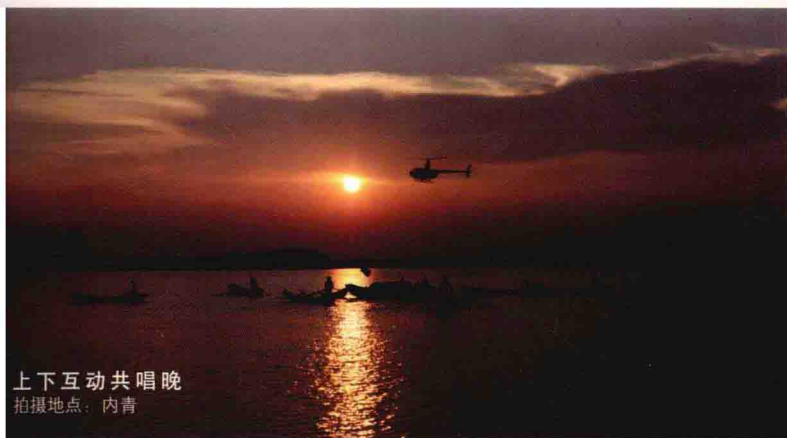
拍摄地点：洪家月



饶河之春
拍摄地点：冷子洲



水墨湿地
拍摄地点：斗笠山



上下互动共唱晚
拍摄地点：内青



荷香满塘
拍摄地点：西门湖



夕照伴我归
拍摄地点：罗敏

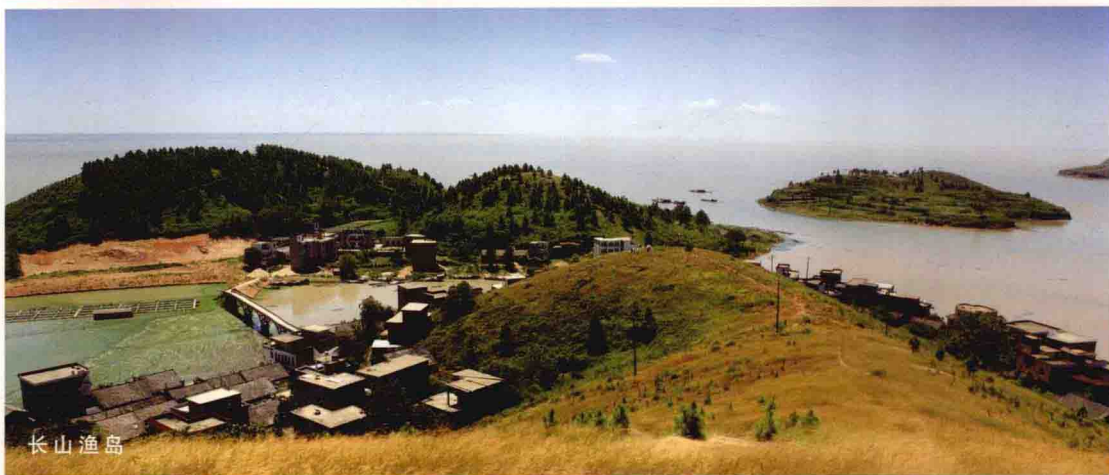


辛勤劳作日夜梦
拍摄地点：内珠湖



晖染孤洲

拍摄地点：香油洲



长山渔岛



醉夕阳

拍摄地点：香油洲



笑指船儿此是家
拍摄地点：罗墩

