

良友

THE YOUNG  
COMPANION

1926—1945





# 良友



期四四一第 號月七  
**THE YOUNG COMPANION**  
JULY 1939 No. 144





佛名山師妙製白 水 醒 蹄 ● 水 鹵 扎 蹄  
舖在皇后大道西十九號 電話二二三七九號  
工廠旺角東街七十四號 電話五八〇九號

**CHINA PRODUCTS CO**

OFFICE: NO 90 QUEEN'S ROAD W. TEL., 23379.  
FACTORY: NO 74 SHAN TUNG STREET. TEL. 56809.  
CABLE ADD. "KIRTLED" HONGKONG.

鮮蛋蝦子麵  
鮮蛋貴子麵  
鮮蛋羅漢麵  
長壽麵  
中國勝利麵  
全蛋歡喜麵  
全蛋鳳凰麵

五喜	四喜	三喜	雙喜	喜字
鼓油王	鼓油王	鼓油王	鼓油王	鼓油王
斤	斤	庄	庄	散
八毫	五毫	三毫	二毫	一毫



封面——路明女士——	滬江照相館攝	1
抗戰建國二週年		2
英日衝突尖銳化——天津日軍封鎖英租界——		3
英大使行蹤		4
後方的經濟堡壘		5
山西展開運動戰	席與覃 趙定明	10 11
南天烽火	中央社	12 13
國際反侵略運動		14 15
上海之輔幣荒	徐時 張沅恆	16 17
吉隆坡華僑回國投軍	張文傑	18
空軍藝展	黃亮	19
但澤自由市——未來歐洲之火藥庫——		20 21
英潛艇之慘劇		22 23
難民生產運動	李能光	24 25 26
納粹家庭的生活		27 28 29
峨眉天下秀——四川遊記之五——	張沅恆	30 31
僑胞雜訊		32 33
捕魚人兒世世窮	林隱賢	34 35
學生將軍		36 37
南國的夢	巴金	38 39
夏之序幕	張沅恆 秦泰來	40 41
健身運動	秦泰來	42 43
良友讀者		44

# 良友一四四期目錄

# 書新友良



上海四川路  
良友雜誌社  
三十三號

臧克家作  
亂莠集  
每冊四角

巴金作  
電 普及本

巴金作  
霧 普及本  
每冊六角

新書三種  
最近出版



蒸如熱炎  
神精耗損

暑夏時節天氣悶熱吾人猶困處蒸籠之中大都飲食少進精神萎靡體力虧損百病易於侵襲故夏季進補實較冬季為尤重要  
**母利兒魚肝油精丸**毫無腥味吞服便易每粒可抵二十五倍之優等魚肝油補力偉大增強抵抗力量合乎國人體質實為夏季之唯一強身要品

法國巴黎基利謀藥廠製造

華美、五洲、中英、濟華堂及各大大藥房均



中國總經理  
法商百部洋行

丸精油肝魚兒利母

每瓶六十粒定價比眾低廉

**MORRHUOL  
CHAPOTEAUT**



# 抗戰二週年

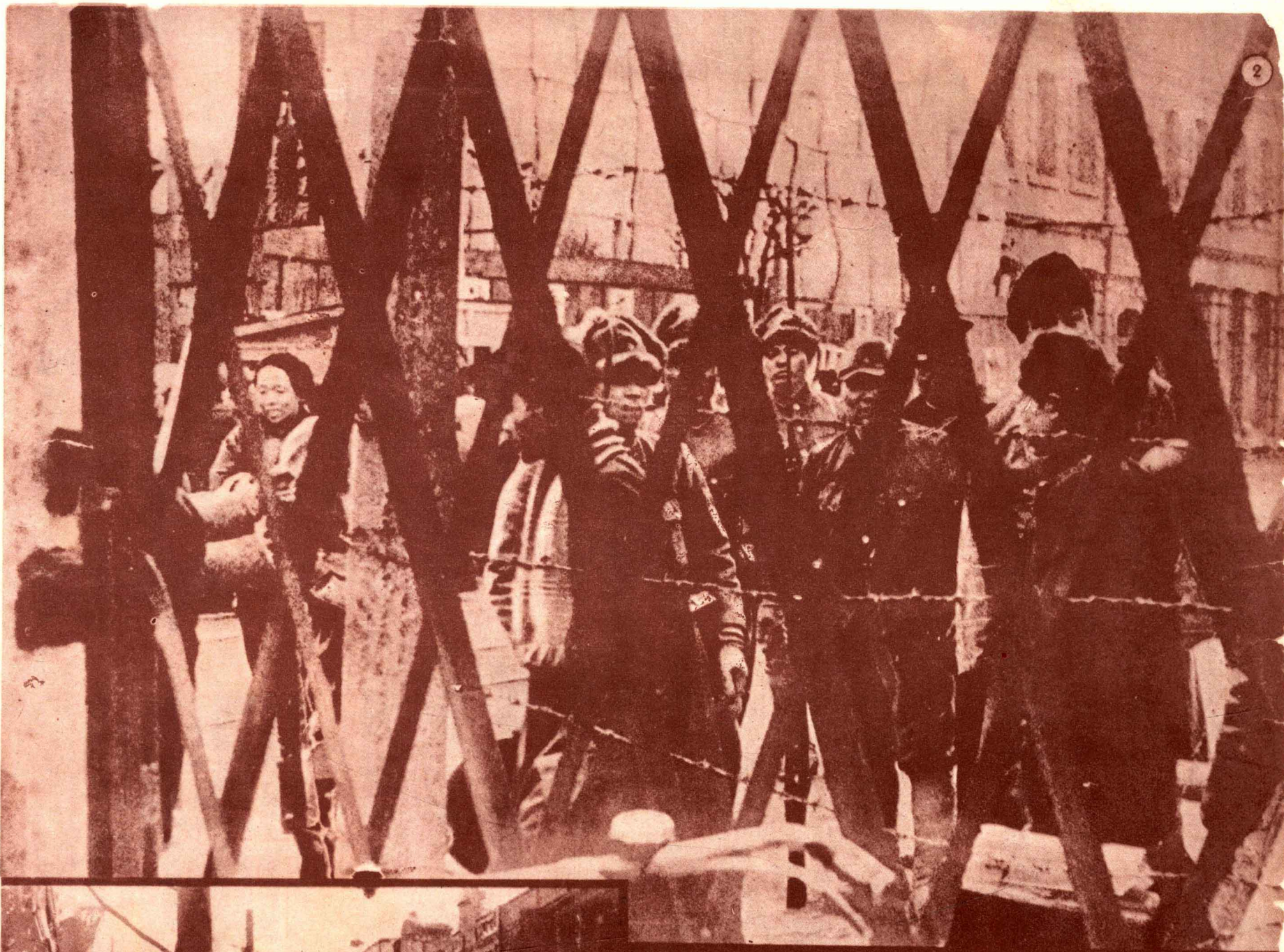
蘆溝橋事變，已經整整的過了兩年，被視為不足一擊的中國，不但在已往兩年中證明是一個愈戰愈勇的強人，而且還準備再戰兩年，五年以至十年，在未來的中國歷史上，蘆溝橋正是中國走上復興大道的標記，而在蘆溝橋上揭開的血戰史，將是中華民族五千年來最光榮的一頁。

## LUKOUCHIAO:

— BIRTHPLACE OF TWO-YEAR OLD SINO-JAPANESE WAR —

For two years the world has been the witness of a wildfire burning and spreading fiercely and steadily in the Far East, reducing millions of Chinese homes into ashes and ruins and reflecting its light even in the skies of distant lands. The severe fighting of the past 24 months has neither shattered China's determination to resist nor broken down her capacity for resistance. However that may be, this famous bridge, Lukouchiao, will go down in Chinese history for this historical event.





嚴森備戒兵日外界租英

↑ Japanese gendarme guard all thoroughfares that leading to the British and French Concessions.

流電以通且，繞圍所網絲鉄彼均路馬各界租英通

← Wire entanglements have been erected to facilitate the blockade.

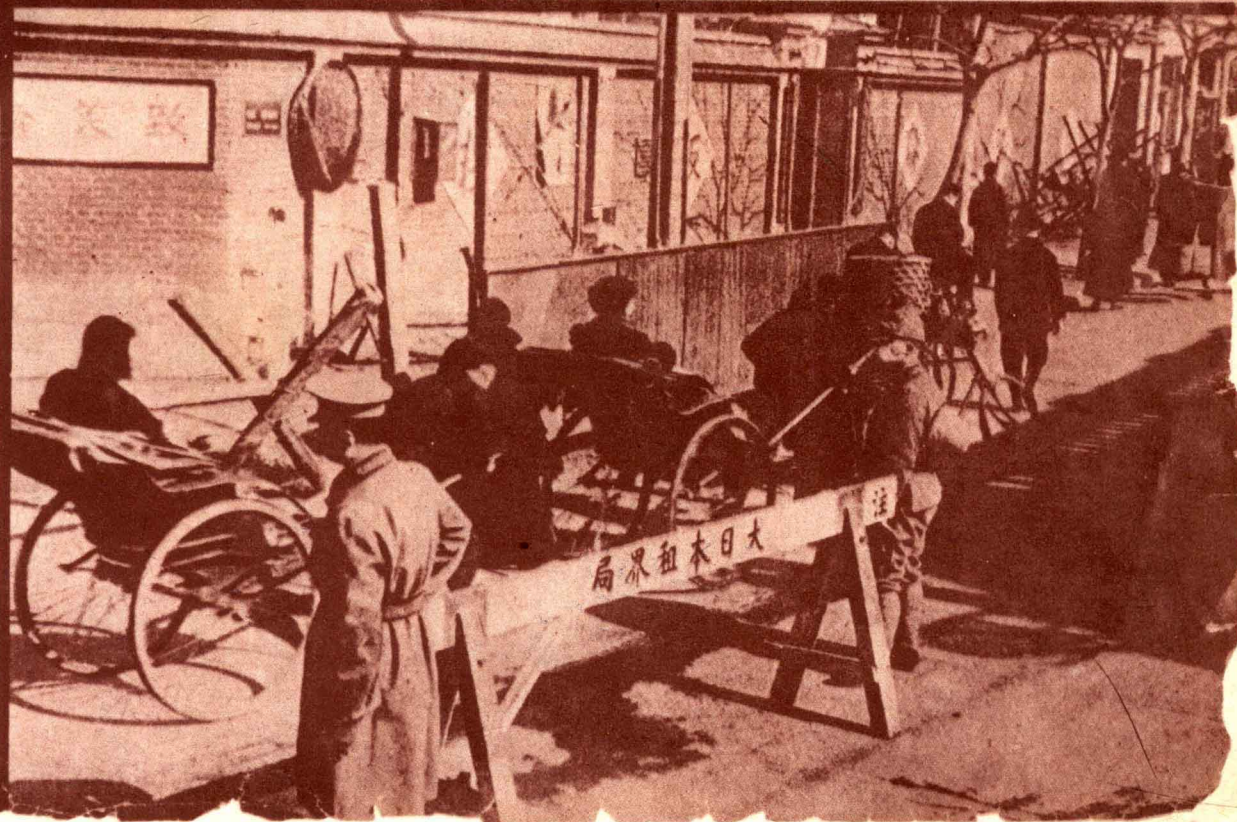
人行查檢，守駐警偽兵日有，處口入之界租英

↓ After careful searches, passengers are allowed to enter the Concessions.



## CONCESSIONS IN TIENTSIN BLOCKADED

On June 14, the Japanese Army in Tientsin imposed a virtual blockade on the British and French Concessions in that city in retaliation against a British refusal to hand over four Chinese allegedly implicated in the assassination of Chang Hsi-hou. Japanese-appointed manager of the Tientsin branch of the Federal Reserve Bank, who was shot dead in a cinema in the British Concession on April 9. A conference will be held in Tokyo to discuss the differences. Whatever form the Japanese demands may take a change of venue from Tientsin to Tokyo is evident that the statesmen in charge of Japan's foreign policy desire a peaceful, rational settlement.





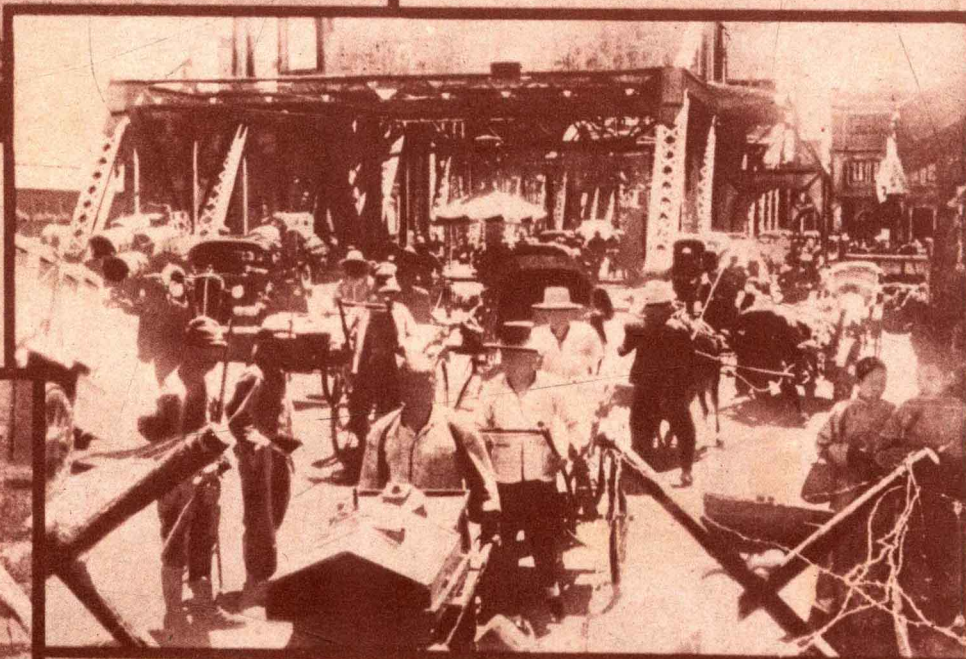
# 英日衝突之銳化

——天津日軍——

天津日軍因要求引渡刺殺四罪犯，被英租界當局所嚴辭拒絕，遂於六月十五日起實行封鎖英租界，不特華人出入須受嚴密檢查，即英國商人，亦被命遮衣去褲，在界路受檢。聞日本政府已接受英國之提議而由天津英日代表，赴東京舉行會議，作地方事件之解決，日本方面雖將提出更換英國外交政策及提取存銀等要求，英外相已表示絕無考慮之餘地。據國外觀察家言，日軍此次行動與德國準備佔領但澤之舉，東西呼應，且為對英國遠東利益之一種恐嚇。



上鐘十均，時受每受排入界英，待一人中。  
以分在平間檢人檢隊口出租在遇律民外  
The Chinese crowd lining up for searches in front of a wooden house. ↑



人行往來查檢備準，兵哨本日有站，上橋國萬之界租英通  
↑ Only a narrow passage is allowed in every thoroughfare for rickshaws.



查搜密嚴警偽被亦，包衣品食之攜所人婦即  
An old woman's belonging under examination by a Japanese gendarme. ↑



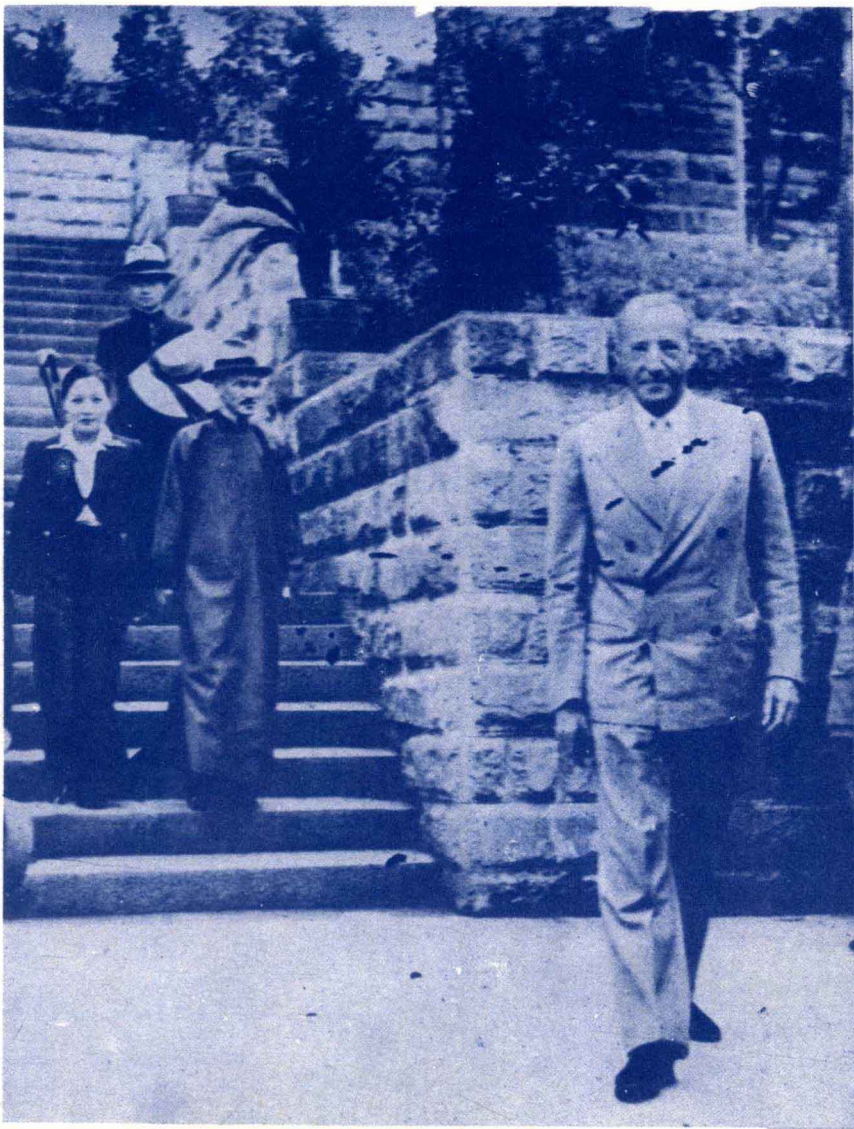
恐嚴繼物內起致，被河在船之食滿  
慌重之不食界引以阻中白，貨糧載  
Along the Pei River, supplies of food sturr and daily necessities ars waiting for passage. →



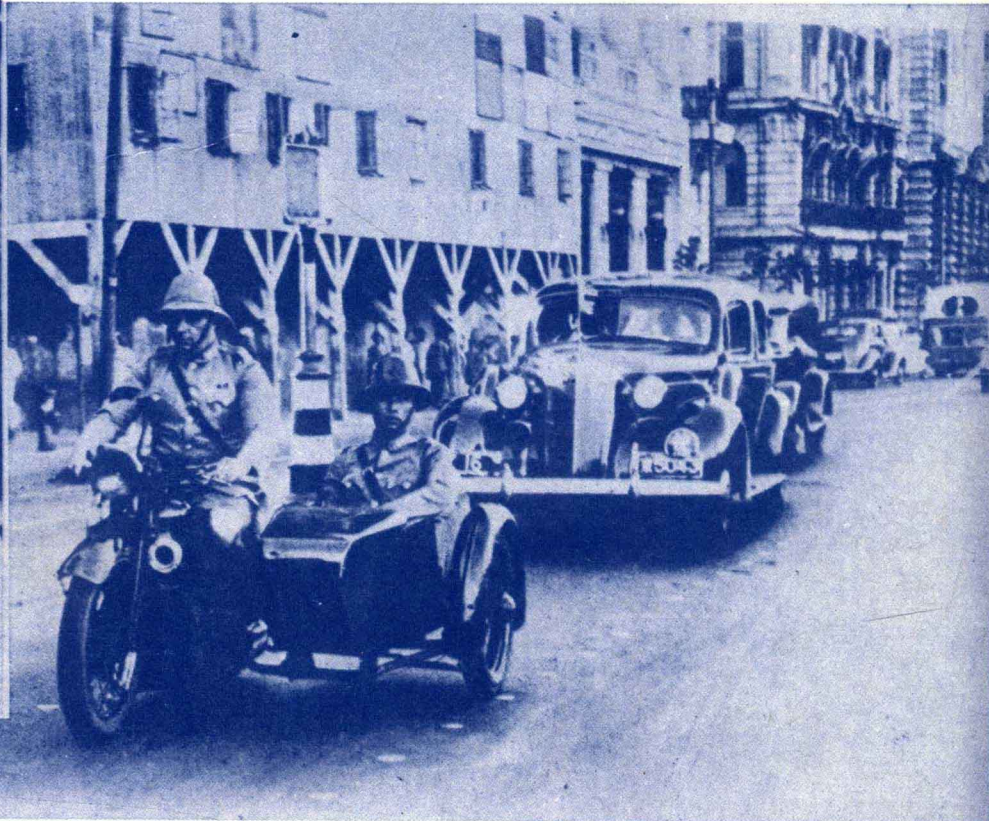
# 英大使行蹤

英大使自來渝，轉赴成都，經漢口，由海關，日假外灘，怡和洋行，五樓辦公，最近因信，接恐對峙，於大，將公，害，將，租，界，警，務，當，局，必，取，各，種，防，意，外。

## SIR A. CLARK KERR: AMBASSADOR IN CHINA BRITISH



英使特爾裁邸時臨夫親門仲攝  
大時赴總私進，行蔣婦送外蔣祺  
After a courtesy call at the Generalissimo's headquarters in Chungking, Sir Clark Kerr is seen off by Madame Chiang and the Generalissimo.



英使近滬，接嚇，其助國府以鎗付英使一防，人穿彈申井警前護，防測徐攝  
大時來後，恐信援中政，對手須，大為計出均避馬，由捕後衛不以一時

Sir A. Clark Kerr, British Ambassador to China, reported to have received threaten letters from terrorists in Shanghai.



英使成時靖公派官代鄧任任會延攝  
大都在，綏署黃長表主專拜。汪熙  
Representative of Szechuan Pacification Commissioner's Officer called on Sir Clark Kerr when the latter was in Chengtu.



英使渝滬。黃灘陸上租當特幹追保。徐攝  
大由來時在浦登由海界局派捕隨護一時  
When Sir Clark Kerr is arriving in Shanghai from a recent trip to Chungking, capital of Free China.

延攝。出邀當省，在大適時大國紀各成七五  
月日都界念恥會，英使蓉由府局席汪熙  
Sir Clark Kerr participating the mass meeting of the Chinese people in Chengtu, May 7, at the invitation of the local authorities.







In order to rebuild its industrial base and to absorb all unemployed men and women into productive work the Chinese government has begun to organize a movement for the establishment of Industrial Co-operatives. This movement under the direction of the Ministry of Economic Affairs, has spread rapidly all over China. The above 13 workers who withdrew from Hankow last year formed the backbone of the cotton cord cooperative in Northwest.

一國生決他布一村在路亡口老十位上重許外，千已指洲個齊後人中的工  
件家活了們合個中西，了撤幼三。的獲多的獲百在導工月措的第國組業  
大完，個不作樂組北現數退，個圖生了難成得鄉後之業來施重二抗織合  
事成還人但社棉織的在干，從男中產生民績了村方下專在，要期戰，作  
業了替的解，紗了某已里流漢婦這地活都，意中的，家歐六經以進是社

## 壘堡濟經的方後

——動運作合業工國中——

# INDUSTRIAL COOPERATION FOR CHINA'S NATIONAL DEFENCE

到是推，時花作廠作當生告之在全趕傷中五省則為不  
愉他動是借生社之社我。約。工業內完毛用難，均各款的工作  
快們的預來，的外商們一。約。工業內完毛用難，均各款的工作  
，的梳備的社，標看我一。約。工業內完毛用難，均各款的工作  
且品機軍務主是一，每早。約。工業內完毛用難，均各款的工作  
感既，用價要一輛我家已。約。工業內完毛用難，均各款的工作  
到迅沒毛清顧個車們人考。約。工業內完毛用難，均各款的工作  
們而一用。是南滿不的過。約。工業內完毛用難，均各款的工作  
就又部的不兵女載得門察。約。工業內完毛用難，均各款的工作  
是美新，遠士人驚掛式境，的們有她她罐。約。工業內完毛用難，均各款的工作  
環觀式他，，一驚掛式境，的們有她她罐。約。工業內完毛用難，均各款的工作  
境，的們有她她罐。約。工業內完毛用難，均各款的工作  
的機完一的說罐。約。工業內完毛用難，均各款的工作  
主們器全個合兵在個業。約。工業內完毛用難，均各款的工作  
人對幫用青作士糖三角作。約。工業內完毛用難，均各款的工作  
在工他工在已愛，個式社。約。工業內完毛用難，均各款的工作  
這作們和剪把吃這小工，。約。工業內完毛用難，均各款的工作  
個都，驢羊開糖個穴業所。約。工業內完毛用難，均各款的工作  
小咸但馬毛辦拖台工合以。約。工業內完毛用難，均各款的工作

之在全趕傷中五省則為不  
工國部製兵有人，由貨同  
各成由之民最已界基工業  
處。一棉約多有熱金業運  
籌據萬衣萬者工心，五動  
設發五五人業人供十創  
合起千千，過台士各餘辦  
作者條件於二作之地種不  
的，年人，助作由八  
三預長內年人，助作由八  
萬定機衣二。每。社中個  
所計一月湖一現作央月  
，劃萬萬間南社在借政，  
并，五套，省之江款府已  
將在千。在內組西之撥有  
創短對在十有織湖用款分  
辦時，三五一，南，五社  
規期在月日少小及經百五  
模內五份內城者西常萬百  
較，日又製，祇北費，個  
大將內會成城四各用作，

信物一來而且他  
念品種，獲使們  
以生使出加工抗  
外產後生征入業戰  
計方活軍生合實  
井劃的的士產作  
且之民資的，運  
可下衆料家不動  
以，都，族依不  
提除能同，賴但  
高了達時也慈為  
民製到還可善難  
衆造自能以性解  
對完給把因質解  
於美自多為的決  
抗的足餘加施了  
戰工的入了捨  
最人地生了來活  
後和步產工過問  
勝必。品合活題  
利需在賣社，  
的的這出，并

增為，術二題人協乏斷，地備術的們  
進發作持，：之會。絕什公所是上流所  
展長對一贊總這，八路用可所落在原  
實戰們的，數重，種地燒運日生的內的成  
力之立便千新推由現人於入常產訓地沿千  
動安量流定工祥便的火戰需多，成口萬  
；之用失國合任使常通爆，用如無都手  
三本，所的作用會政必內發都的有衣受工  
，沒的實運長府需地後由東了無到業  
利且有難業動，在品的，沿西嚴食了者  
用可經民基，并重，交不海的密的戰和  
中使驗，礎為得慶於通但口。的難爭熟  
國國其，中以國委立感道海經時織。影工  
家，中廣便已保解員了到，口河為和這響人  
然植授有障決長工極大岸道了必些，  
資人以某利三及業度半的，過需人便因  
源材工種權大蔣合的也工鉄去在大為  
以，藝技；問夫作缺已廠路內設技量他

動中長的價位  
力工城工值逐  
之業，業的漸中  
一合作保合維的國  
作衛作持取抗  
運中運以得戰  
動華動人了兩  
更民，發主足  
已族已動動年  
迅，替了地後  
速使中祇位，  
地侵國有，不  
成略建六國但  
為者築上際在  
抗無了個質軍  
戰法一月易事  
期達座已的上  
中其堅見平已  
重的目強意衛從  
要的的外，被  
經。經效法動  
濟其濟果幣地



，見也還每於生難各的，，的，合後佩，是丘  
台到很有日一產入地貨利我。最作面帶另製的  
布那高兩出羣單煤去車用們一近社，的一造旁  
等些與所煤東位礦。，驟經向幾，又徵個醫邊  
合製的淘五北，合這將馬過着個他有章地藥，  
作造工金十難煤作所工拉一城月們一，方用，  
社燭作合噸民礦社運合着個市，才都間，製的有  
，着作自的合和輸的裝運下逃是製在造紗一  
生帽，社誇，作其合出有輸山到華造一中布個  
意，另，。他社他作品汽合的山中靴列國和合  
都制外他那們是工社運車作西的鞋山新棉作  
很服還們裏以屬業還到輪社光來人的穴兵花社



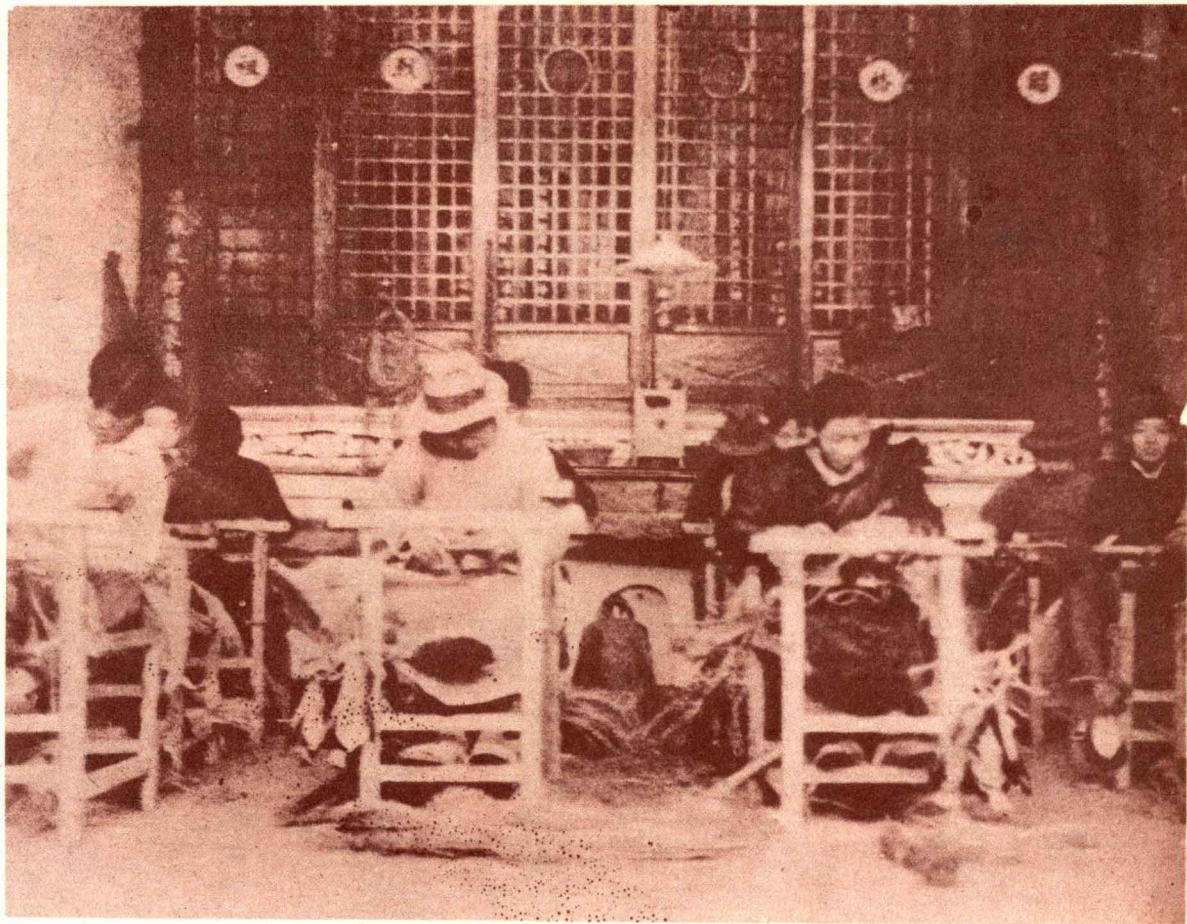
銷替設品成們借把，工鄉偏在，三就，布藥這  
們法，的，給資政作村僻一他個是一組棉一  
推他又物製他本府着中的個們人十共合紗個

There were only 13 members when this co-operative started in a Shansi village. The government supplies them with raw materials and provided them with transportation facility.



The scope of industrial co-operative is extremely wide. It includes manufacturing of all daily articles. There is a co-operative for soap making industry in Northwest.

佳質，的有澤造士裏品用皂造都物需是廣包範作工  
。料但潔機雖，法就，必是。有品要日，舍園社業  
頗是白製沒色製用這需日吧製，的常凡甚，的合

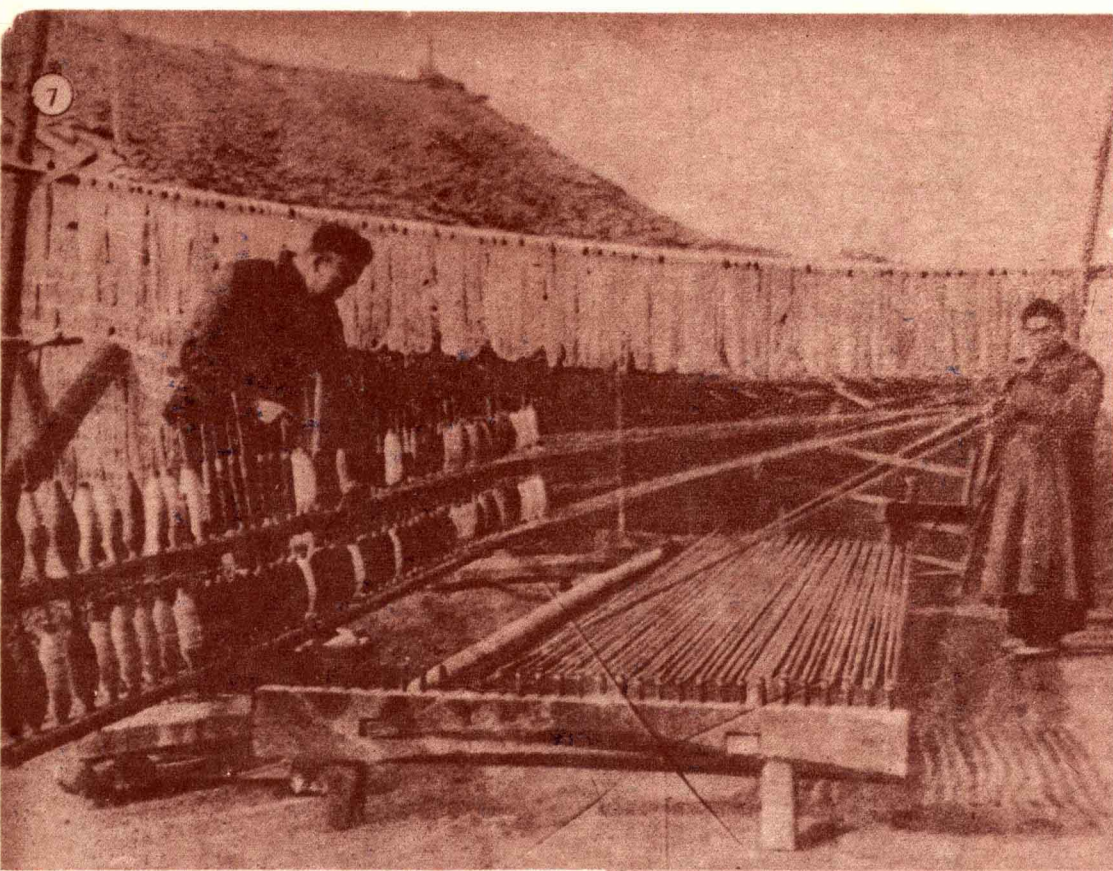


黎便中作從，總任黎蘭請元五共，大主由是工  
先是西，事積顧技先人新，百撥政事辦中一合  
生艾人圖工極問衛生艾西聘萬款府業的央個社

In view of the difficulty of finance most of the co-operatives are making use of old temples as their headquarters. They are not only saved money but time as well for their members.

房想是祠或關改的把大浩臨存了中處散合這  
。的最堂私帝成房舊部外時社，鄉在社種  
廠理都家廟，屋式都，建址部除村各四工

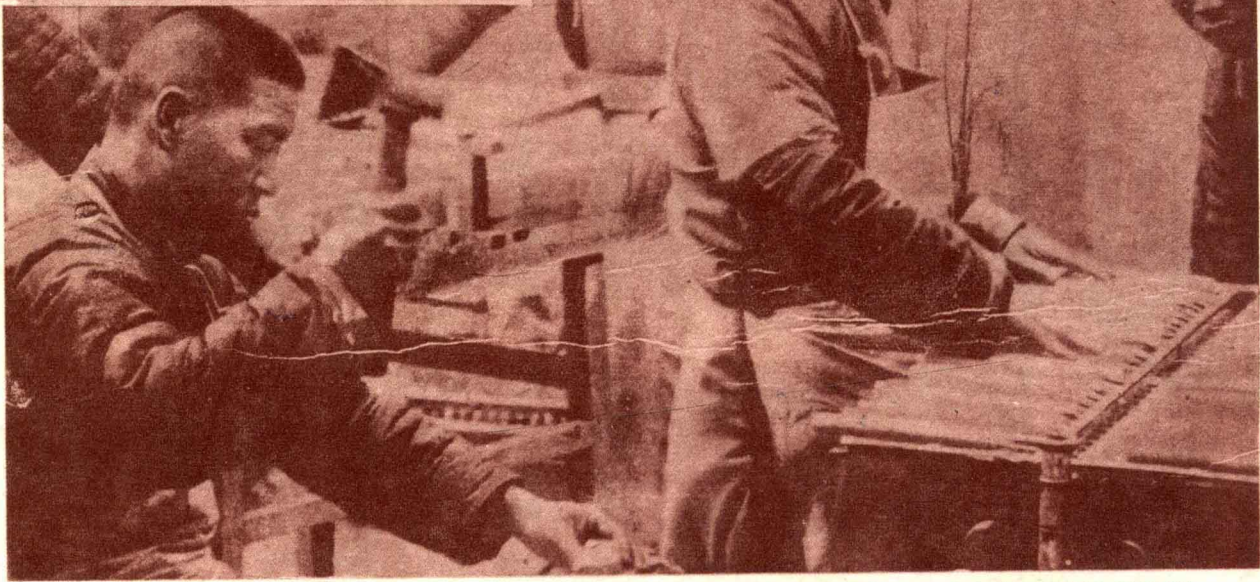
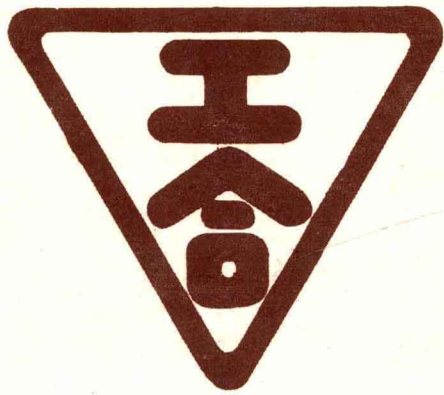




出都古現祇 器工同，所所水的村一 逃上社好  
 來已的在是 合廠一而用機，時得切 來海的。原  
 了建平從山艾作，鄉是器在候到運一的方時。原  
 ，立原福西黎社將村用機合這，新輸現。言光當  
 堆起，建一先。所中人器作樣就的都在一，，他  
 棧來許的部生一有工，社情用意靠鐵 們，你  
 建了多山的所 的帝去并成形新義小路 們會走  
 築，工地情報 鐵廟轉非立之。路不 們都是入  
 起工業一形告 改動汽了下辦遇，能 都是到木  
 來人合直，的 供為的油，法着所用 是熟工  
 了訓作到可雖 給練。機但有來天以 浦悉合  
 。練社蒙是然 機鐵在器是一取早山， 東的作

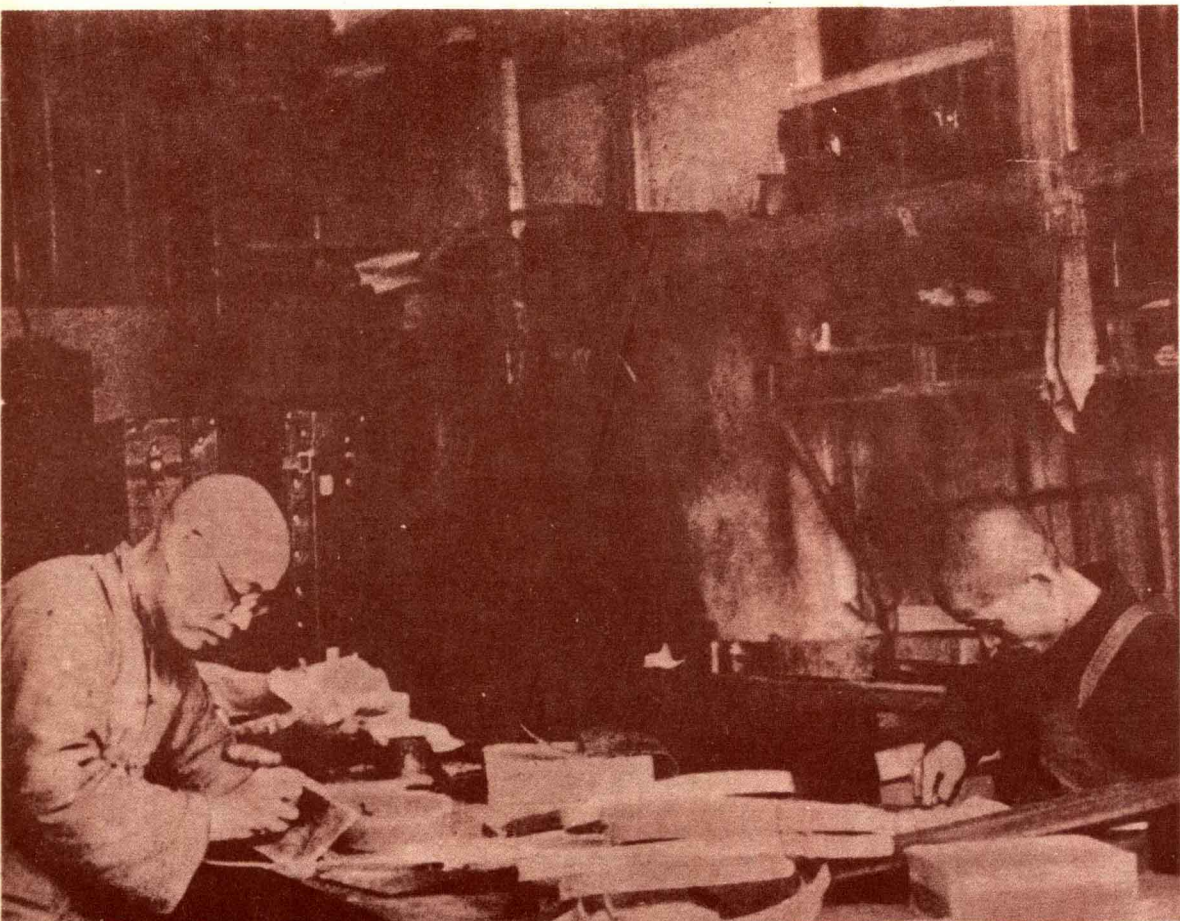
。脈經是不，的散。一四人工裏陋在合軍織  
 的濟中出誰鄉於他二五數合。的一社氈羊  
 大國他都村荒們百人，社每草座，的毛  
 支動祈們看中僻分入到由的一屋簡就工製

Huts and old temples are usually employed for headquarters of various co-operatives. a wool thread co-operative in Northwest, for example, is housed in a small hut.



Candles in Northwest still considered important in the matter lighting on account of the lack of electricity. The candle-making co-operative in Northwest is formed for that purpose.

。導再由人練市長位有，工合每較以見燈各為蠟  
 農去他具技的於是一至人社一廣用，很地西獨  
 民教們，術熱城生二少中的工。途所少電北因



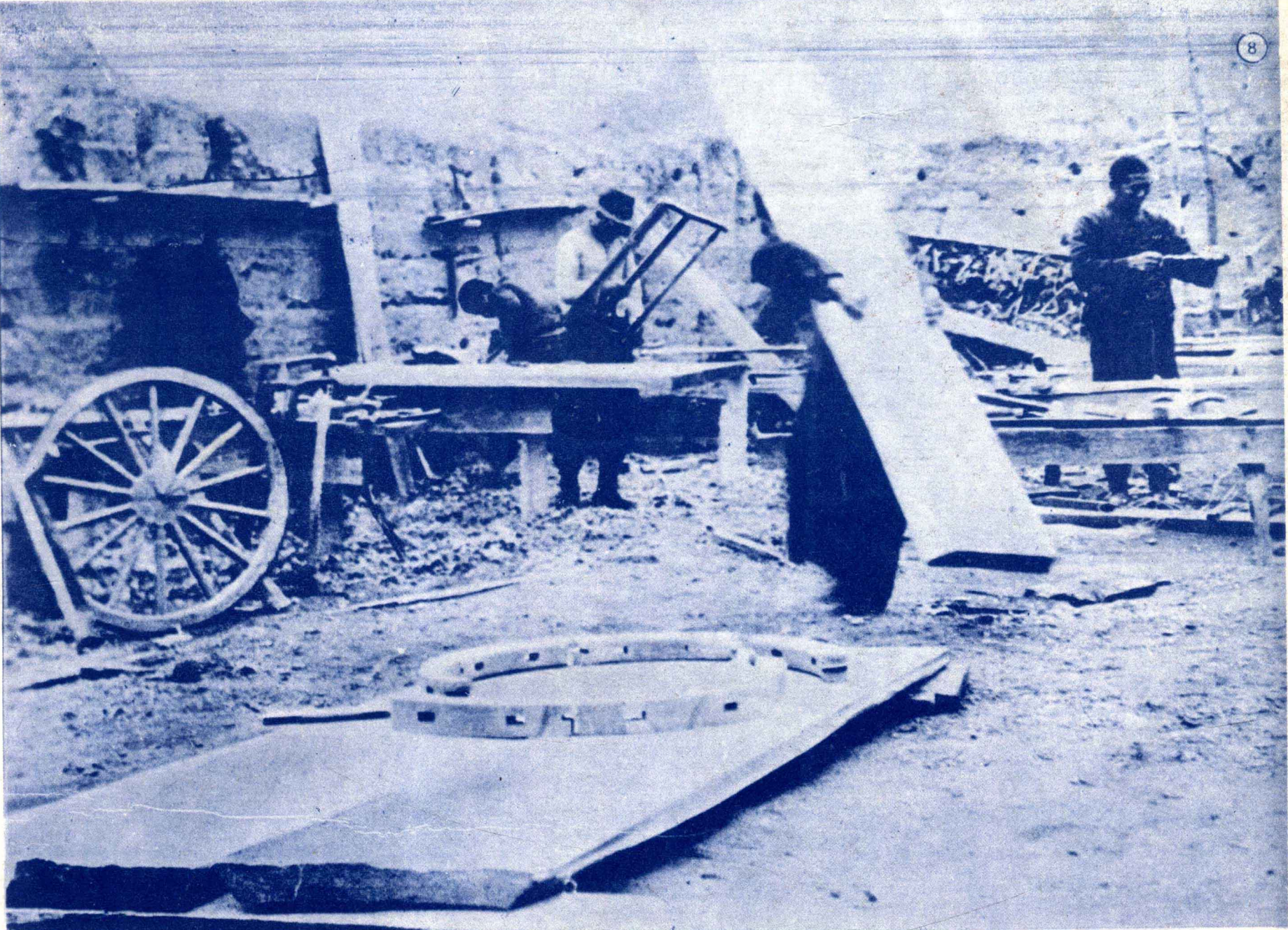
Leather Goods Co-operative in Northwest is another line of industry that Northwest has been established. All the members work together, stay together and share the profit together.



Mr. Rewi Alley (left), formerly of the Industrial Department of the Shanghai Municipal Council has been engaged as an adviser to the co-operative movement by the Government.

CONTINUED ON NEXT PAGE (頁下續)





增而的工了帶西社業車這而發上於輪街是昂代的居多公後，輸利需費速，有，有  
進戒發合其正北，合的種製明的驢胎汽有，價汽外，路方中工的有，的要消必生  
中速達社他跟一在作工驢造。新車裝車用於太油貨但難的國其運便必消急費需產

In the field of transportation in Northwest, local-made carts still occupy an important place.  
The co-operative in this field provides the urgent need for guerrillas.

工的退武大，張預台印慶職合各市重，於井工  
人熱下漢半職營備，刷市，的種也要後鄉不台  
。練來撤基員業開正工的重組工有都方村限社

Members of the Printing Co-operative in Chungking putting up their signs. The co-operatives in Chungking area are also under direct control by Ministry of Economic Affairs.

導制業。的改用農可的動以工了戰去飛經的的說這  
人度的這手良機民以工。隨合，事轟機完力一明些  
們，分種工固器去教人執處社整發炸無成量種中事  
在領散工業有以使導又練移可個生，法，已新國寶

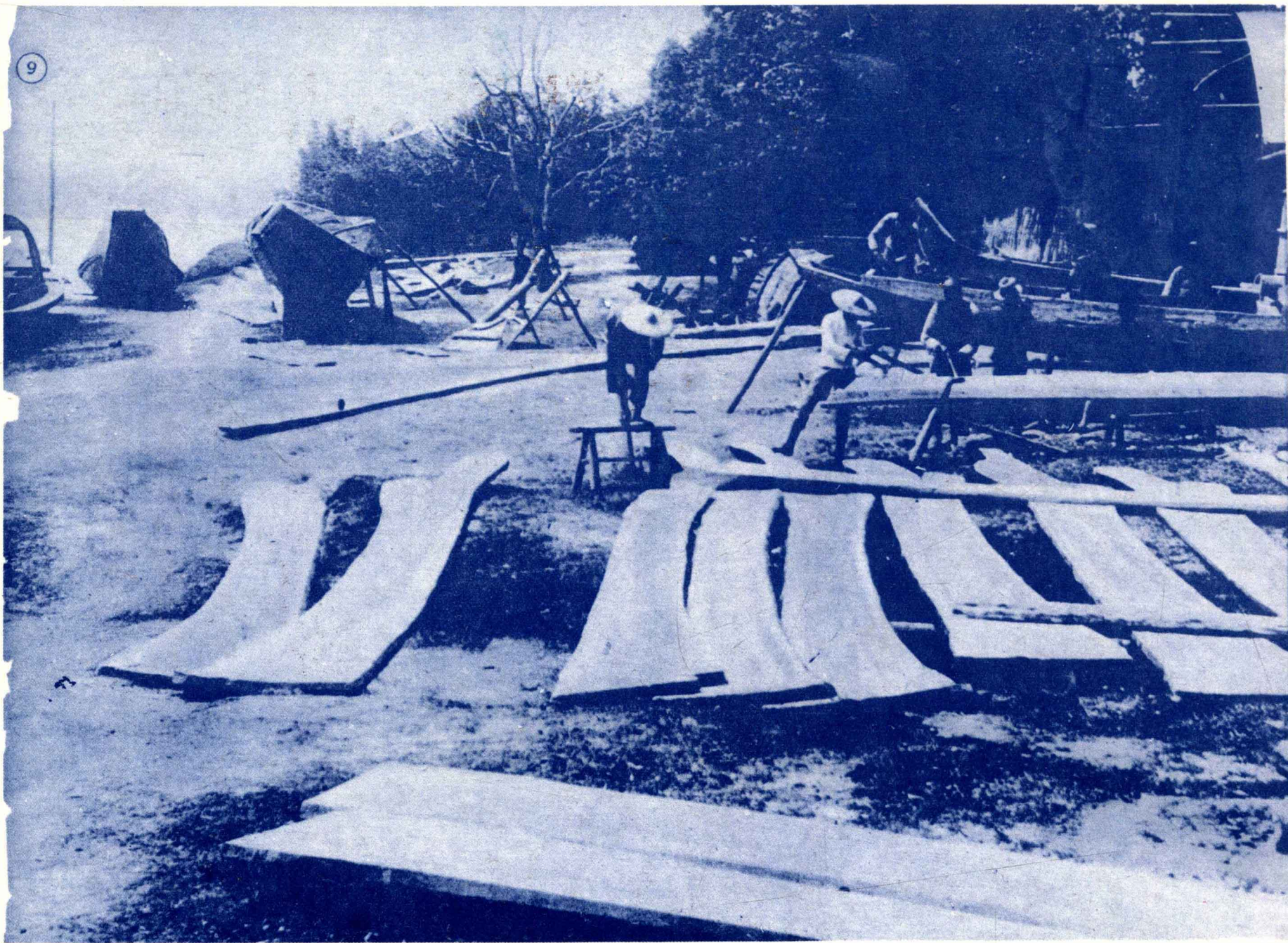


一份五祇費輸是，汽運不率。責大了。係銘的運工，公南北於往車的新這  
。之十及用的運但車貨及雖速任的最盡上關產動合在路的西西來，驢式種

In the field of transportation in the mountained Shansi co-operative also invades. This profit-sharing system in communication serves best to the people especially the peasants.







觀極數，各於，合種給當有服急軍且產方決不工  
。爲字出城內通作服，的了裝需隊對，的了但合  
可，品市地設社裝這供適也的中於并生後解社  
There is a clothing store in Northwest operated on a co-operative basis. This, however, may be considered as consumers' co-operative which is somewhat different from I. C.

佳果作以，知相都技造對民地國。可隨社工船造以，利積道地，品輸路靠品社工  
。極效工所識當有術船於，農內中見處，合的木製所用極也河內外出運公除出合  
In addition to carts, a co-operative also established in Northwest to make sampans for inland navigation. Most of the food supplies are depended on this means of transportation.



完應量的抗合：委，在樂立工使法本壘的築後  
成當，經戰作一員所農地地人難侵經，經起方  
的努我濟後社工長以村生，能民入濟使濟堅合  
「力們堡方是業說蔣中活快獨或，無日堡強力



。出合代「就標三都街鎮，處村後但後極月於經商的工  
品社售本表。角掛上的小可中的在，推來六政標三合  
」的工鋪示這商着也大市見隨鄉落不動積個府，角社  
The co-operative movement may be new in China comparatively speaking. But their signs are seen all over China. In the above picture the sign is seen in a Hunan town.



# 山西開展運動戰

—— 席與羣 趙定明 攝 ——

北戰場中，山西全省已展開廣大之運動戰，日軍除佔據重要交通幹綫上之重要城市外，大部土地仍在華軍掌握中。晉省華軍兵力甚厚，計有正規軍，遊擊隊，反偽軍，均受重慶之直接指揮。觀乎近數月來，南晉北之華軍屢獲大勝，足證日軍已感疲於奔命也。



Most of the weapons of Shansi's guerillas are "supplied" by Japanese and even overcoats.

山西擊隊之武器，大半得自日軍，為軍中大衣，日軍之槍，山地游擊隊。



Puppet army in Shansi often staged mutiny and joined hand with National divisions as seen here.

山西偽軍，最近皇軍慶正部計將人數。偽軍最誠，協三反，有士千。



。隊擊遊衣便國中之山西衛保  
A defender of Great Shansi.



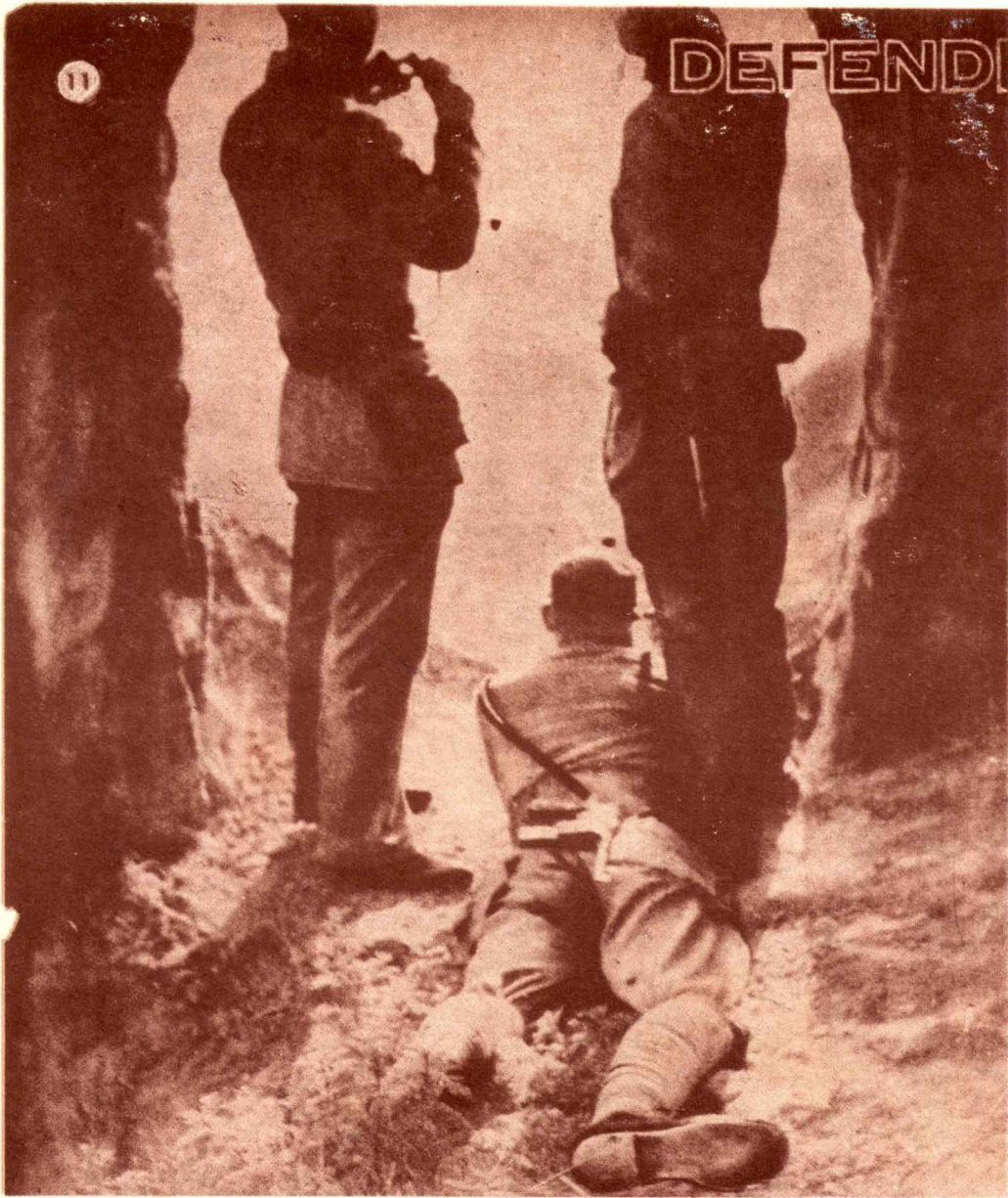
Chinese troops movements in Shansi as freely as usual even part of the province was occupied.

太原之一市雖日軍掌握，然外村路均為華所連行，前異。原帶城，軍在，城鄉公，屬有軍故輸與無。



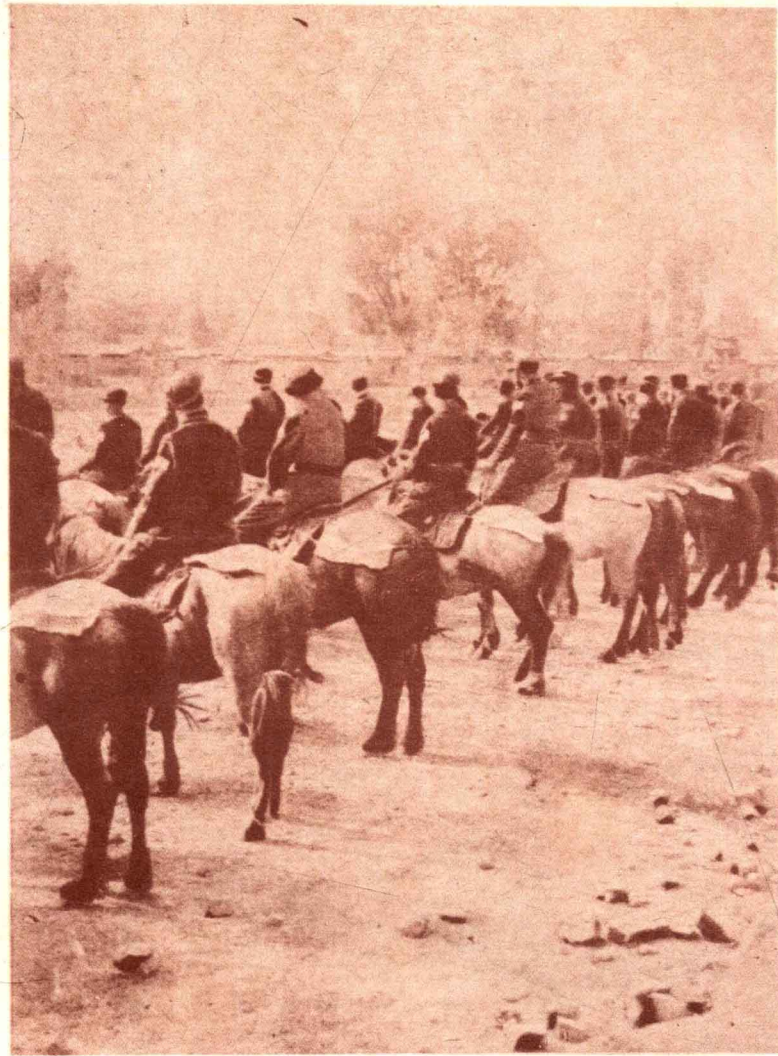
# DEFENDING GREAT SHANSI

—Gate Way to China's Northwest—



Army headquarters in Shansi is usually found in cave. These natural dugouts are found everywhere in Shansi.

↑駐西華警旅備軍之山  
○前線陣營長參長備軍之山



↑山內軍之非民團并規師并銳數時週，管軍  
○北包戰以旅騎有，軍有外自及游正，之西  
日抄略迂，兵精內×正，衛鄉擊規除華境

Chinese cavalry units also active in Shansi's mountained areas. They render great aid in transportation too.

Self-defend Corps are organized in every part of Shansi with the exception of occupied areas.

↓山民自衛隊，均受團組  
○加令官正受事種照，事格皆，衛均西  
戰參訓軍近則有耕時練軍嚴員織自民山  
作，長規附時，常平訓之受團組有鄉



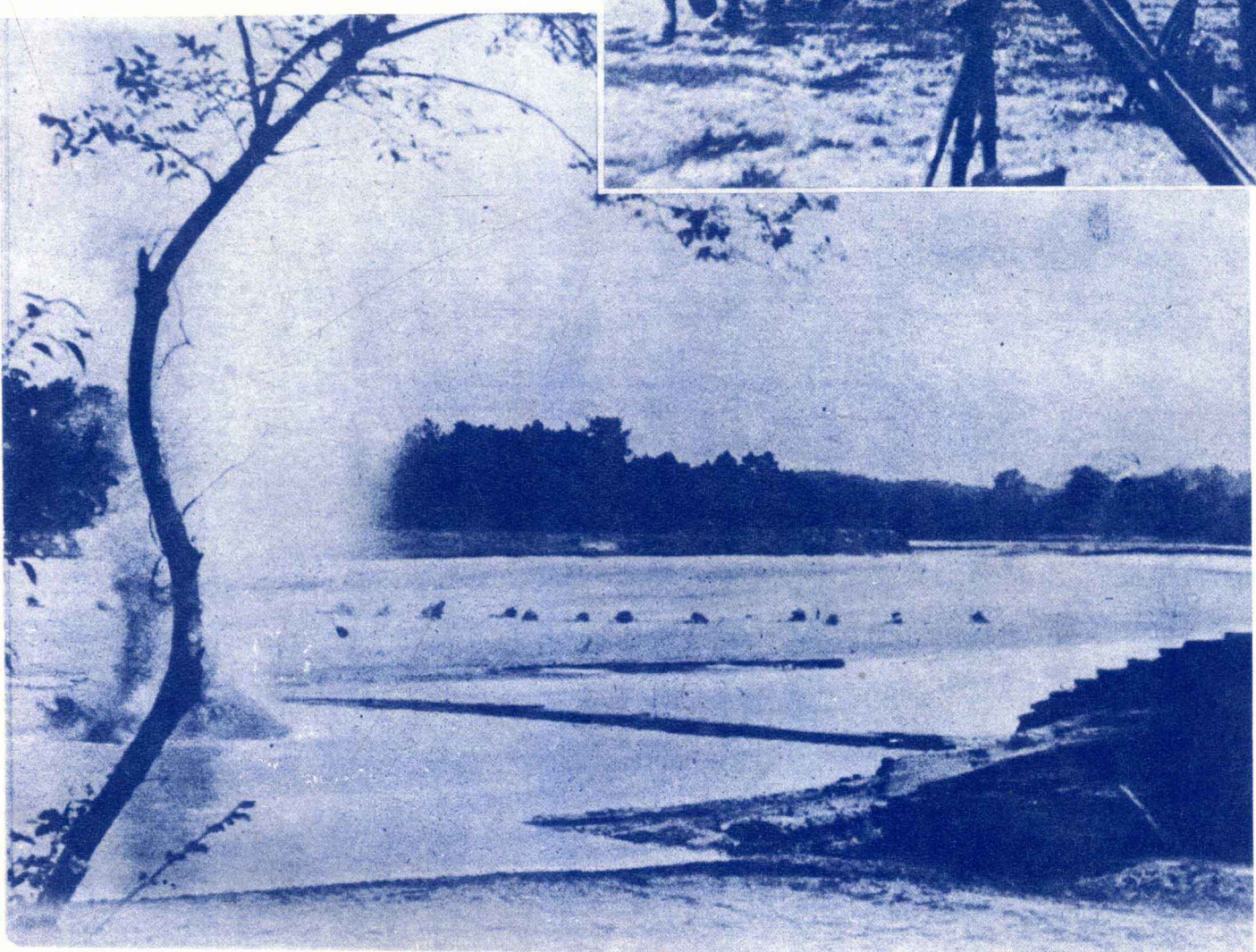




◦ 擊出河渡旅某軍華線前化從東廣 ↑  
Chinese troops crossing a river in  
Chungfa sector: in their advance.



◦ 閱檢自親長師由時線前發出 ↑  
Division commander making his  
personal inspection trip at front.



◦ 進挺河渡火砲着冒軍華 ←  
Despite of heavy line of shelling,  
Chinese tooops continue the  
crossing.



中央社攝

# 南天烽火

——戰 激 之 線 增 從 ——

影之從頁重支半軍數發近一在烈事之寂頭日  
。戰化所傷木，傷次生與帶，又華靜登軍  
攝前載，亦指，大日，從，趨南多陸在  
線為，本負過，戰軍最線激戰時後汕

## ALONG CHUNGFA FRONT

Chinese trench mortar units in action along Chungfa front.

。隊砲擊迫軍華之線前北粵在

。射掃下向後地高某領佔軍華  
After occupation of a hill, Chinese  
troops continue their advance.

。發進線前向隊部勇英  
Fresh reinforcement marching  
toward to Chungfa front.

