

浪漫鋼琴曲集①

許經燕 主編

*Lover's
Romance*

浪漫鋼琴曲集①

許經燕編著

溫馨的樂章

為你輕奏心曲

浪漫的旋律

替你細訴情懷

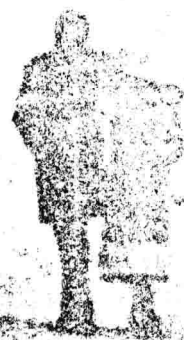
愛的音符

帶給你詩一般的感覺

時刻瀟灑……

情意綿綿……

絲絲細意……



群輝音樂出版社

© 1987 STARLIGHT INTERNATIONAL CO.
P.O. BOX 35626 KING'S ROAD POST OFFICE HONG KONG
all rights reserved.

CONTENTS



Lover's Romance Piano Collection Vol.1

Romance Of The North Sea 北海羅曼史	4
The Lovers 「天各一方」音樂版	8
The Homecoming 「客從何處來」音樂版	12
The Heart Is A Lonely Hunter 電影「天涯何處覓知心」主題曲	16
Carrillon 「靚歌伴星河」主題曲	20
Romance D'Amour 愛的羅曼史	23
Je T'Aime (Love At First Sight) 一見鍾情	26
Heather 艾華	30
Loss of Love 電影「向日葵」主題曲	33
The Poet And I 詩人與我	36
Love Is Blue 愛是憂鬱	42
Nadia's Theme 電影「歌曼妮茲」主題曲	46
* Unforgettable Nineteen 難忘十九歲	50

浪漫鋼琴曲集①

許經燕編著

溫馨的樂章

為你輕奏心曲

浪漫的旋律

替你細訴情懷

愛的音符

帶給你詩一般的感覺

時刻瀟灑……

情意綿綿……

絲絲細意……



群輝音樂出版社

© 1987 STARLIGHT INTERNATIONAL CO.

P.O. BOX 35626 KING'S ROAD POST OFFICE, HONG KONG

all rights reserved.

樂曲淺釋

Carrillon

「靚歌伴星河」主題曲

第二十九小節至第三十六小節高音部符桿朝下的爲主旋律聲部，在彈奏時註意保持主旋律及伴奏（分解和弦）之分隔。

Loss of Love

電影「向日葵」主題曲

本曲表現了失去愛情那種憂傷壓抑的盛情，彈奏時速度要適當的緩慢，略爲自由，並註意強弱隨旋律的發展變化有起有伏。

The Poet And I

詩人與我

本曲速度較快，旋律輕鬆活潑、流暢、彈奏分解和弦與琶音時，請特別註意其連慣性的平均。

Nadia's Theme

電影「歌曼妮茲」主題曲

彈奏第五小節至12小節時請註意突出高聲部的旋律部份低聲部P的力度妥適當控制。

“（鋼琴）聲音出來了：有些是沈着音的，有些是尖銳的，有些鏗鏘的響着，有些低低的吼着。孩子長久地傾聽着，一個一個，低下去，寂滅了；它們有如田野裏聽到的鐘聲般動盪着，隨風飄傳出去，輪番吹遠了；隨後當你傾耳細聽時，還可以聽到遠遠裏有別的不同聲音交錯迴旋，彷彿羽蟲飛舞，它們好像在呼喚你，引你到寫遠之處……”

*Lover's
Romance*

is trademark owned and used under Licence from MOONRISE RECORDS COMPANY
Any unauthorised duplication is a violation of applicable laws.

CONTENTS



Lover's Romance Piano Collection Vol.1

Romance Of The North Sea 北海羅曼史	4
The Lovers 「天各一方」 音樂版	8
The Homecoming 「客從何處來」 音樂版	12
The Heart Is A Lonely Hunter 電影「天涯何處覓知心」 主題曲	16
Carrillon 「靚歌伴星河」 主題曲	20
Romance D'Amour 愛的羅曼史	23
Je T'Aime (Love At First Sight) 一見鍾情	26
Heather 艾華	30
Loss of Love 電影「向日葵」 主題曲	33
The Poet And I 詩人與我	36
Love Is Blue 愛是憂鬱	42
Nadia's Theme 電影「歌曼妮茲」 主題曲	46
* Unforgettable Nineteen 難忘十九歲	50



Romance Of The North Sea 北海羅曼史

Arr. by Hui King Yin (C.A.S.H.)

Piano arr. © 1987 STARLIGHT INTERNATIONAL CO.

♩ = 63

G

p
Red. * simile

Em

Am

D

Red. * Red. * Red. Red. * Red. * Red. *

G

Em

Am

mf
Red. * Red. * Red. * Red. Red. * Red. *

D G D Em7 B7
 dolce
 * simile

Em G7 Cm7 D G

Em Am D
 * simile

G D B Cm7 D Eb C D
 f dim
 ped. ped. ped. ped.

G Em³ Am

mf

ped. *ped.* * *simile*

D G B G B

f

Em G7 Cm7 D G

mf

Em Am D

ped. * *ped.* * *ped.* *ped.* * *simile*

G D B Cm7 D Eb C D

f *dim.*

Rehearsal marks: Red. Red. Red. Red.

G A^b Eb Fm

mf

** simile*

Rehearsal marks: Red. Red. Red. Red.

F[#]m E F[#] G

p *rit. dim.*

Rehearsal marks: Red. Red. Red. Red. Red. Red.

Rehearsal marks: Red. Red.



The Lovers 「天各一方」 音樂版

Arr. by Hui King Yin (C.A.S.H.)

Piano arr. © 1987 STARLIGHT INTERNATIONAL CO.

$\text{♩} = 84$

Am Am Dm

p *Red.* * *Red.* * *Red.* * *simile*

G C F Am Dm

E7 F Dm G C

Red. *Red.* *Red.* *

F Am Dm E7 Am

R.H.

Red. * *simile*

Am Dm G

mf

Red. * *simile*

C F Dm E7

F Dm G C F Am

Red. * *Red.* *

Chords: Dm, E7, Am

Red. *

Chords: Gm, Am, Dm, E7, Am

f

Red. * Red. * Red. *

Chords: Dm, Bm, E7

Red. Red. Red. Red. Red. * Red. * Red. Red. *

Chords: Am, Am, Dm

p *mf*

simile

Red. * Red. * simile

G C Am Dm

E7 F Dm G C

f

F Dm E7 Am

E7 Am F E7 Am

rit. *a tempo* *rit.*



The Homecoming 「客從何處來」音樂版

Arr. by Hui King Yin (C.A.S.H.)

Piano arr. © 1987 STARLIGHT INTERNATIONAL CO.

♩ = 78

C9 *p* Dm Em Am Ab

pp

ped. * ped. ped. * ped. ped. *

F G Am C

R.H. L.H. R.H.

ped. * ped. * ped. * simile

C R.H. F G C

L.H. *mp*

Am

Dm

G7

C

C

F

G

C

Am

Dm

G

C

Cm

pp

p

R.H.
7
8
L.H.
mf

Musical notation for the first system, measures 1-4. The treble clef contains a melodic line with eighth notes and a slur. The bass clef contains a bass line with eighth notes. Chords are indicated above the staff: Am, Dm, G7, and C.

Musical notation for the second system, measures 5-8. The treble clef contains a melodic line with eighth notes and a slur. The bass clef contains a bass line with eighth notes. Chords are indicated above the staff: C, F, G, and C. Performance instructions include 'R.H.' with fingerings 7 and 8, and 'L.H.' with dynamic marking *mf*.

Musical notation for the third system, measures 9-12. The treble clef contains a melodic line with eighth notes and a slur. The bass clef contains a bass line with eighth notes. Chords are indicated above the staff: Am, Dm, G, and C.

Musical notation for the fourth system, measures 13-16. The treble clef contains a melodic line with eighth notes and a slur. The bass clef contains a bass line with eighth notes. Chords are indicated above the staff: Cm. Performance instructions include dynamics *pp* and *p*.

Cm

mf

Cm

mf

6 4 1 4 5

G C D

L.H. R.H. mf

G Em Am D7

G Em Am D7