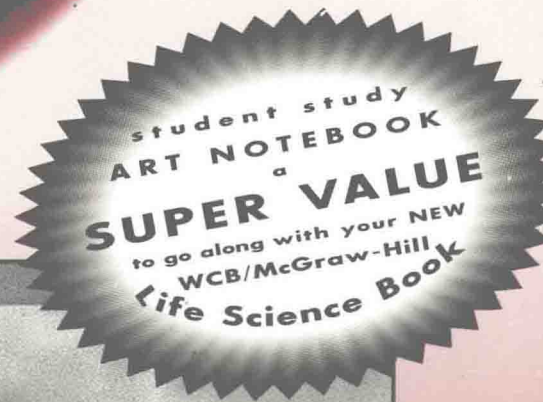


student study  
ART NOTEBOOK



HOLE'S  
**HUMAN ANATOMY  
& PHYSIOLOGY**

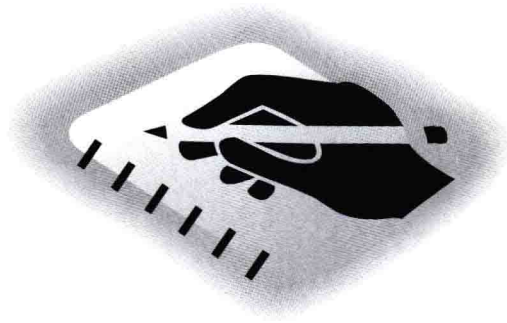
DAVID SHIER

JACKIE BUTLER

RICKI LEWIS



SEVENTH  
EDITION



HOLE'S  
**HUMAN ANATOMY  
& PHYSIOLOGY**

**DAVID SHIER**

WASHTENAW COMMUNITY COLLEGE

**JACKIE BUTLER**

GRAYSON COUNTY COMMUNITY COLLEGE

**RICKI LEWIS**

THE UNIVERSITY AT ALBANY

**Mc  
Graw  
Hill** **WCB  
McGraw-Hill**

Boston, Massachusetts Burr Ridge, Illinois Dubuque, Iowa  
Madison, Wisconsin New York, New York San Francisco, California St. Louis, Missouri

**WCB/McGraw-Hill**

*A Division of The McGraw-Hill Companies*

SSAN t/a HUMAN ANATOMY & PHYSIOLOGY

Copyright © 1996, by The McGraw-Hill Companies, Inc. All rights reserved.  
printed in the United States of America. Except as permitted under the United  
States Copyright Act of 1976, no part of this publication may be reproduced or  
distributed in any form or by any means, or stored in a data base or retrieval  
system, without the prior written permission of the publisher.

4 5 6 7 8 9 0 QPD/QPD 9 0 9 8 7

ISBN 0-697-25381-3

Cover Photo credit: © Mark Lewis/Tony Stone Images

The credits section for this book begins on page 237 and  
is considered an extension of the copyright page.

<http://www.mhhe.com>

This Student Study Art Notebook is a gratis ancillary to assist students in note taking during lectures. On each page, there are one, two, or sometimes three figures faithfully reproduced from the textbook. Each figure also corresponds to one of the 300+ acetates available to instructors who adopt this textbook.

The intention is to place the acetate art in front of students (via the notebook) as the instructor uses the

overhead during lectures. The advantage to the student is that he/she will be able to see all labels clearly, and take meaningful notes without having to make hurried sketches of the acetate figure.

The pages of the Art Notebook are perforated and three-hole punched, so they can be removed and placed in a personal binder for specific study and review, or to create space for additional notes.

# DIRECTORY OF NOTEBOOK FIGURES

TO ACCOMPANY

SHIER ET AL., HOLE'S HUMAN ANATOMY AND PHYSIOLOGY, 7E.

Human Torso, Anterior Surface and  
Superficial Muscles Reference Plate 1  
Human Torso, Deeper Muscle Layers  
Reference Plate 2  
Human Torso, Abdominal Viscera  
Reference Plate 3  
Human Torso, Thoracic Viscera  
Reference Plate 4  
Human Torso, Lungs, Heart, and Small  
Intestine Sectioned Reference Plate 5  
Human Torso, Heart, Stomach, and Part of  
Intestine and Lungs Removed  
Reference Plate 6  
Human Torso, Visceral Organs Removed  
Reference Plate 7

## Chapter 1

Homeostatic Mechanism Figure 1.5  
Hierarchy of Organization Figure 1.6  
Major Body Cavities Figure 1.7  
Body Planes Figure 1.17

## Chapter 2

Organization of an Atom Figure 2.2  
Ionic Bond Figure 2.3  
Covalent Bond Figure 2.4  
pH of Common Substances Figure 2.8  
Structure of Glucose Figure 2.9  
General Structure of a Steroid Figure 2.14  
Structure of an Amino Acid Figure 2.15  
Secondary Structure of a Protein  
Figure 2.17  
Tertiary Structure of a Protein Figure 2.18

## Chapter 3

Composite Cell Figure 3.3  
Cell Membrane Figure 3.7  
Secretory Processes of a Cell Figure 3.12  
Facilitated Diffusion Figure 3.23

Osmosis Figure 3.24 18  
Active Transport Figure 3.28 19  
Phagocytosis Figure 3.30 19  
Mitosis Figure 3.35 20  
Cellular Differentiation Figure 3.42 21

## Chapter 4

Dehydration Synthesis Forms Disaccharide  
Figure 4.1 22  
Dehydration Synthesis Forms Fat  
Figure 4.2 22  
Dehydration Synthesis/Peptide Bond  
Figure 4.3 23  
Enzyme-Substrate Interaction Figure 4.5 23  
Cellular Metabolism Figure 4.6 24  
ATP Figure 4.7 25  
Glycolysis Figure 4.10 26  
Citric Acid Cycle Figure 4.11 27  
Breakdown of Proteins, Carbohydrates,  
and Fats Figure 4.16 28  
Base-Pairing of DNA Bases Figure 4.21 29  
Portion of a DNA Double Helix Figure 4.22 30  
RNA Bases Figure 4.23 31  
DNA-RNA Transcription Figure 4.25 31  
Protein Synthesis Figure 4.26 32  
DNA Replication Figure 4.28 33

## Chapter 5

Exocrine Glands Figure 5.10 34  
Merocrine Glands Figure 5.11 35

## Chapter 6

Skin Section Figure 6.2 36  
Layers of the Epidermis Figure 6.3 37  
A Melanocyte Figure 6.5b 38  
Body Temperature Regulation Figure 6.12 39  
Skin Regeneration Figure 6.14 40  
Integumentary System InnerConnections:  
Chapter 6 41



## Chapter 7

Structure of a Long Bone	Figure 7.2	42
Compact Bone	Figure 7.5	43
Cartilaginous Cells	Figure 7.9a	44
Traumatic Fractures	Box 7.3, Figure 7A	45
Repair of a Fracture	Box 7.3, Figure 7B	46
Upper Limb	Figure 7.14	47
Hormonal Regulation of Bone Calcium	Figure 7.15	48
Human Skeleton, Anterior & Posterior	Figure 7.17	49
Human Skull, Anterior	Figure 7.19	50
Human Skull, Lateral View	Figure 7.21	51
Human Skull, Inferior	Figure 7.22	52
Human Skull, Cranial Floor	Figure 7.26	53
Human Skull, Sagittal	Figure 7.29	54
Human Skull, Posterior	Figure 7.30	55
Mandible	Figure 7.31	55
Infantile Skull	Figure 7.33	56
Vertebral Column	Figure 7.34	57
Types of Vertebrae	Figure 7.35	58
Atlas and Axis	Figure 7.36	58
Thoracic Cage	Figure 7.40a	59
Pectoral Girdle	Figure 7.42a	60
Bones of the Upper Limb	Figure 7.44a-c	61
The Pelvic Girdle	Figure 7.49a,b	62
Left Coxal Bone	Figure 7.50	62
Female Pelvis	Figure 7.51	63
Lower Right Limb	Figure 7.52b,c,d	64
Skeletal System	InnerConnections: Chapter 7	65

## Chapter 8

Synovial Joint	Figure 8.7	66
Femur and Tibia	Figure 8.8	66
Movable Joints	Figure 8.9a-c	67
Movable Joints	Figure 8.9d-f	68
Shoulder Joint	Figure 8.13a	69
Surfaces of the Shoulder	Figure 8.14	69
Elbow Joint	Figure 8.15a	70
Collateral Ligament	Figure 8.16	70
Hip Joint	Figure 8.18a	71
Right Hip Joint	Figure 8.19	71
Knee Joint	Figure 8.20a	72
Ligaments within the Knee Joint	Figure 8.21	73

## Chapter 9

Skeletal Muscle Structure	Figure 9.2	74
Skeletal Muscle Fiber I	Figure 9.3	74
Skeletal Muscle Fiber II	Figure 9.6	75

Neuromuscular Junction	Figure 9.7	75
Sliding Filament Theory	Figure 9.10	76
Contraction of a Sarcomere	Figure 9.11	77
Muscle Metabolism	Figure 9.13	78
Muscle Fiber Contraction	Figure 9.16	78
Origin and Insertion	Figure 9.19	79
Skeletal Muscles, Anterior	Figure 9.20	80
Skeletal Muscles, Posterior	Figure 9.21	81
Muscles of Expression and Mastication	Figure 9.22	82
Muscles of Posterior Neck and Trunk	Figure 9.23	83
Muscles of Posterior Shoulder	Figure 9.24	84
Muscles of the Anterior Chest and Abdominal Wall	Figure 9.25	85
Muscles of the Scapula and Upper Arm	Figure 9.26	86
Muscles of the Anterior Shoulder and Upper Arm	Figure 9.28	87
Muscles of the Anterior Forearm	Figure 9.29	88
Muscles of the Posterior Forearm	Figure 9.30	89
Muscles of the Pelvic Outlet	Figure 9.33	90
Muscles of the Anterior Thigh	Figure 9.34	91
Muscles of the Lateral Thigh	Figure 9.35	92
Muscles of the Posterior Thigh	Figure 9.36	93
Muscles of the Anterior Lower Leg	Figure 9.38	94
Muscles of the Lateral Lower Leg	Figure 9.39	95
Muscles of the Posterior Lower Leg	Figure 9.40	96
Muscular System	InnerConnections: Chapter 9	97

## Chapter 10

Motor and Sensory Neuron	Figure 10.3	98
Schwann Cell	Figure 10.4	99
Types of Neurons	Figure 10.6	100
Neuroglial Cells	Figure 10.7	101
Establishment of the Resting Potential	Figure 10.11	102
The Action Potential	Figures 10.12	103
Synaptic Knob and Synaptic Cleft	Figure 10.17	104
Reflex Arc	Figure 10.21	105
Knee-Jerk Reflex	Figure 10.22	106
Withdrawal Reflex	Figure 10.23	106
Nervous System	InnerConnections: Chapter 10	107

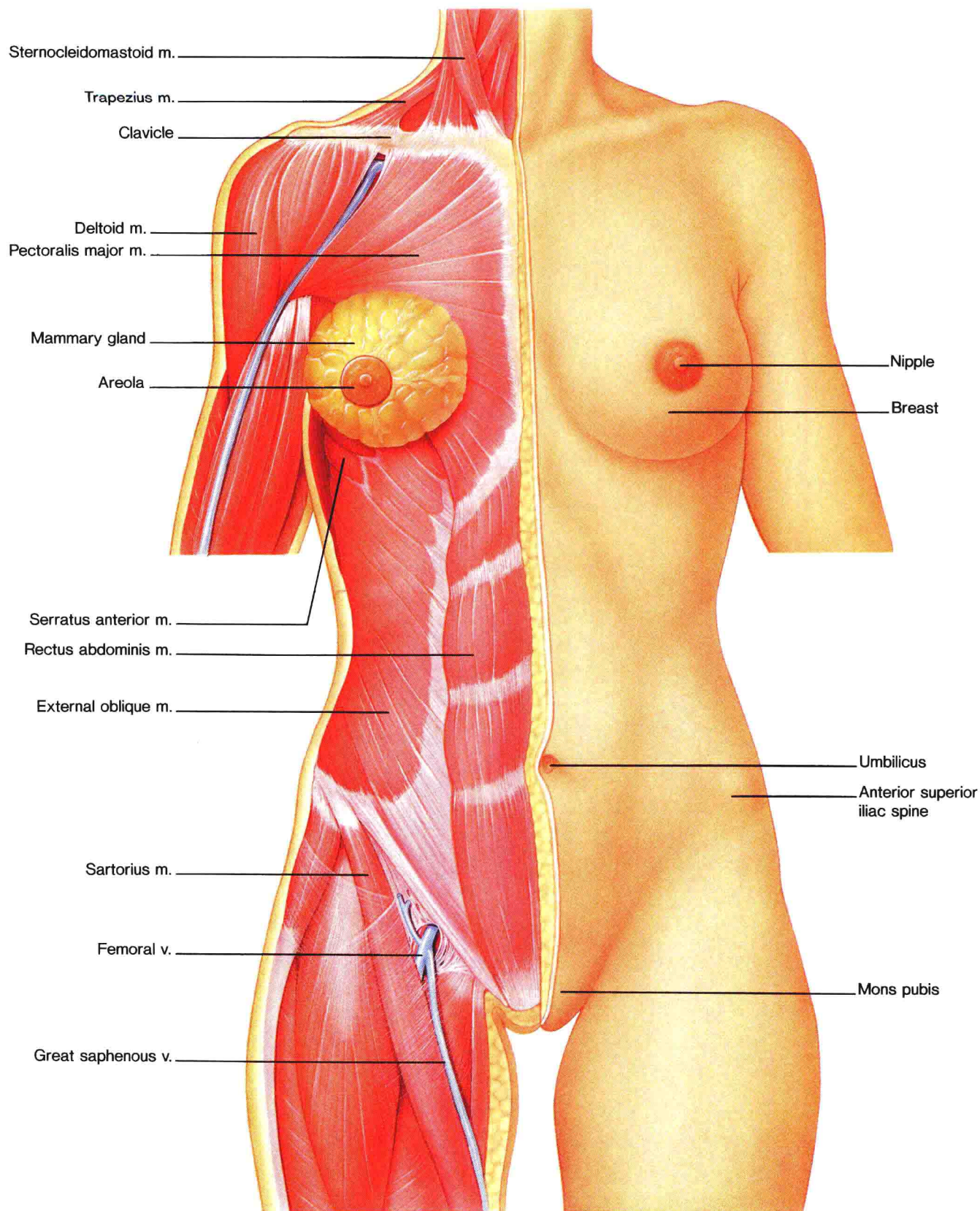
<b>Chapter 11</b>		
Meninges I Figure 11.1	<b>108</b>	
Meninges II Figure 11.2	<b>108</b>	
Ascending Tracts Figure 11.6	<b>109</b>	
Descending Tracts Figure 11.7	<b>110</b>	
The Brain Figure 11.9	<b>111</b>	
Sensory, Motor, and Association Areas Figure 11.11	<b>111</b>	
Motor and Sensory Areas Figure 11.12	<b>112</b>	
Ventricles of the Brain Figure 11.14	<b>113</b>	
Cerebrospinal Fluid Circulation Figure 11.15	<b>114</b>	
A Mixed Nerve Figure 11.20	<b>115</b>	
Cranial Nerves Figure 11.22	<b>116</b>	
Spinal Nerves Figure 11.26	<b>117</b>	
Intercostal Nerves Figure 11.29	<b>118</b>	
Somatic and Autonomic Nerve Pathways Figure 11.32	<b>119</b>	
Sympathetic Fibers in Spinal Nerves Figure 11.34	<b>120</b>	
Sympathetic Nervous System Figure 11.35	<b>121</b>	
Parasympathetic Nervous System Figure 11.36	<b>122</b>	
<b>Chapter 12</b>		
Referred Pain-Pathway Figure 12.4	<b>123</b>	
Olfactory Receptors Figure 12.6	<b>123</b>	
Taste Receptors Figure 12.8	<b>124</b>	
Structure of the Ear Figure 12.11	<b>125</b>	
Inner Ear Structure Figure 12.13	<b>125</b>	
Organ of Corti Figure 12.15	<b>126</b>	
Static Equilibrium Figure 12.20	<b>127</b>	
Dynamic Equilibrium Figure 12.23	<b>128</b>	
Extrinsic Muscles of the Eye Figure 12.26	<b>128</b>	
Eye, Transverse Section Figure 12.27	<b>129</b>	
Lens and Ciliary Body Figure 12.31	<b>130</b>	
Retina Figure 12.34	<b>131</b>	
<b>Chapter 13</b>		
Major Endocrine Glands Figure 13.2	<b>132</b>	
Steroid Hormone Action Figure 13.4	<b>133</b>	
Nonsteroid Hormone Action Figure 13.6	<b>134</b>	
Negative Feedback System Figure 13.7	<b>134</b>	
Pituitary Gland Figure 13.10	<b>135</b>	
Hypothalamic Control of Hormone Secretion Figure 13.11	<b>135</b>	
Hormones from the Hypothalamus and Anterior Pituitary Figure 13.13	<b>136</b>	
Control of Thyroid Hormone Secretion Figure 13.14	<b>137</b>	
Parathyroid Hormone Figure 13.25	<b>137</b>	
Control of Blood Glucose Figure 13.34	<b>138</b>	
<b>Chapter 14</b>		
Blood Figure 14.1	<b>138</b>	
Blood Cell Development Figure 14.3a	<b>139</b>	
Low Oxygen Pressure Figure 14.6	<b>140</b>	
Red Blood Cells Figure 14.7	<b>141</b>	
Leukocytes Figure 14.15	<b>142</b>	
Platelet Plug Formation Figure 14.17	<b>142</b>	
Hemostasis Figure 14.18	<b>143</b>	
Intrinsic Blood Clotting Mechanism Figure 14.20	<b>144</b>	
ABO Blood Types Figure 14.22	<b>145</b>	
ABO Blood Reactions Figure 14.23	<b>145</b>	
Rh <sup>+</sup> Factor Figure 14.24	<b>146</b>	
<b>Chapter 15</b>		
The Heart Figure 15.4	<b>147</b>	
Heart, Frontal Section I Figure 15.6a	<b>148</b>	
Heart, Frontal Section II Figure 15.6b	<b>148</b>	
The Right Ventricle Figure 15.10	<b>149</b>	
Path of Blood through the Heart Figure 15.11	<b>150</b>	
Heart and Coronary Vessels, Anterior Figure 15.12a	<b>151</b>	
Heart and Coronary Vessels, Posterior Figure 15.12b	<b>152</b>	
Coronary Arteries and Cardiac Veins Figure 15.13	<b>153</b>	
Atrial Systole and Diastole Figure 15.16	<b>153</b>	
Cardiac Cycle Figure 15.17	<b>154</b>	
Cardiac Conduction System Figure 15.19	<b>154</b>	
Cardiac Conduction System Components Figure 15.20	<b>155</b>	
Heart Rate Control Figure 15.22	<b>155</b>	
Wall of an Artery and a Vein Figure 15.23	<b>156</b>	
Depolarization and Repolarization Box 15.2, Figure 15D	<b>156</b>	
Metarterioles Figure 15.26	<b>157</b>	
Capillary Exchanges Figure 15.29	<b>157</b>	
Arterial Pulse Sites Figure 15.33	<b>158</b>	
Arterial Blood Pressure Figure 15.34	<b>158</b>	
Inhibiting the S-A Node Figure 15.37	<b>159</b>	
Dilating Arterioles Figure 15.38	<b>159</b>	
The Pulmonary Circuit Figure 15.40	<b>160</b>	
Cells of the Alveolar Wall Figure 15.42	<b>161</b>	
The Brain Figure 15.47	<b>161</b>	
Arterial System Figure 15.52	<b>162</b>	
Circulatory System Figure 15.57	<b>163</b>	
Venous System Figure 15.59	<b>164</b>	



Cardiovascular System InnerConnections: Chapter 15	165	Figure 19.14 Intra-Alveolar Pressure Changes Figure 19.22 Lung Volumes Figure 19.25 Inspiration Figure 19.30 Respiratory Membrane Figure 19.32 Alveolar Gas Exchange Figure 19.34 Oxyhemoglobin Dissociation Curve Figure 19.35 Oxyhemoglobin Figure 19.36 Carbon Dioxide Transport I Figure 19.40 Carbon Dioxide Transport II Figure 19.42 Respiratory System InnerConnections: Chapter 19	194 195 195 196 197 197 198 199 200 201 202
<b>Chapter 16</b> Lymphatic Vessels Figure 16.1 Lymph Capillaries Figure 16.2 Lymph Drainage Figure 16.4 The Lymphatic Pathway Figure 16.7 Lymphatic Capillaries Figure 16.8 Lymph Node Figure 16.9a Lymph Node Locations Figure 16.11 The Thymus Gland Figure 16.12 The Spleen Figure 16.14 B-Cell and T-Cell Origins Figure 16.16 The Complement System Figure 16.19 B-Cell Activation Figure 16.20 B-Cell and T-Cell Interaction Figure 16.21a B-Cell Proliferation Figure 16.22 Immediate-Reaction Allergy Figure 16.24a Lymphatic System InnerConnections: Chapter 16	166 166 167 168 168 169 169 170 171 172 172 173 174 175 176 177	<b>Chapter 20</b> Urinary System Figure 20.1 Kidney Structure Figure 20.4 Nephron Structure Figure 20.9 Juxtaglomerular Apparatus Figure 20.11 Glomerular Filtration Figure 20.15 Tubular Reabsorption Figure 20.19 The Countercurrent Multiplier Figure 20.23 Tubular Secretion Figure 20.25 Urinary Bladder Figure 20.29 Urinary System InnerConnections: Chapter 20	203 204 205 206 207 208 207 208 209 210
<b>Chapter 17</b> Digestive System Figure 17.1 The Small Intestine Figure 17.3 Mouth, Nasal Cavity, and Pharynx Figure 17.7 Major Salivary Glands Figure 17.11 Swallowing Figure 17.14 Stomach Regions Figure 17.17 Gastric Glands Figure 17.19 Gastric Juice Secretion Figure 17.21 The Enterogastric Reflex Figure 17.23 The Pancreas Figure 17.24 Liver Figure 17.28 Gallbladder Figure 17.32 Intestinal Villus Figure 17.37 Fatty Acid Absorption Figure 17.44 Large Intestine Figure 17.45 Digestive System InnerConnections: Chapter 17	178 178 179 180 181 182 183 183 184 184 185 185 186 187 188 189	<b>Chapter 21</b> Fluid Compartments Figure 21.4 Acid-Base Imbalances Box 21.3, Figure 21D  <b>Chapter 22</b> Male Reproductive System, Sagittal Figure 22.1a Male Reproductive System, Posterior Figure 22.1b Testis and Seminiferous Tubules Figure 22.3 Spermatogonia Figure 22.5b Penis Figure 22.11 Male Sexual Development Figure 22.14 Female Reproductive System Figure 22.15a Female Pelvic Cavity Figure 22.15b The Ovaries Figure 22.16 Oogenesis Figure 22.17a Ovarian Cycle Figure 22.22 Infundibulum Figure 22.23	211 211  212 213 214 215 216 216 217 217 218 218 219 219
<b>Chapter 18</b> Food Pyramid Figure 18.16 “Nutrition Facts” Panel Figure 18.17	190 191		
<b>Chapter 19</b> Respiratory System Figure 19.1 Larynx Figure 19.6 Bronchial Tree Figure 19.12 Respiratory Tubes and Alveoli	192 193 194		

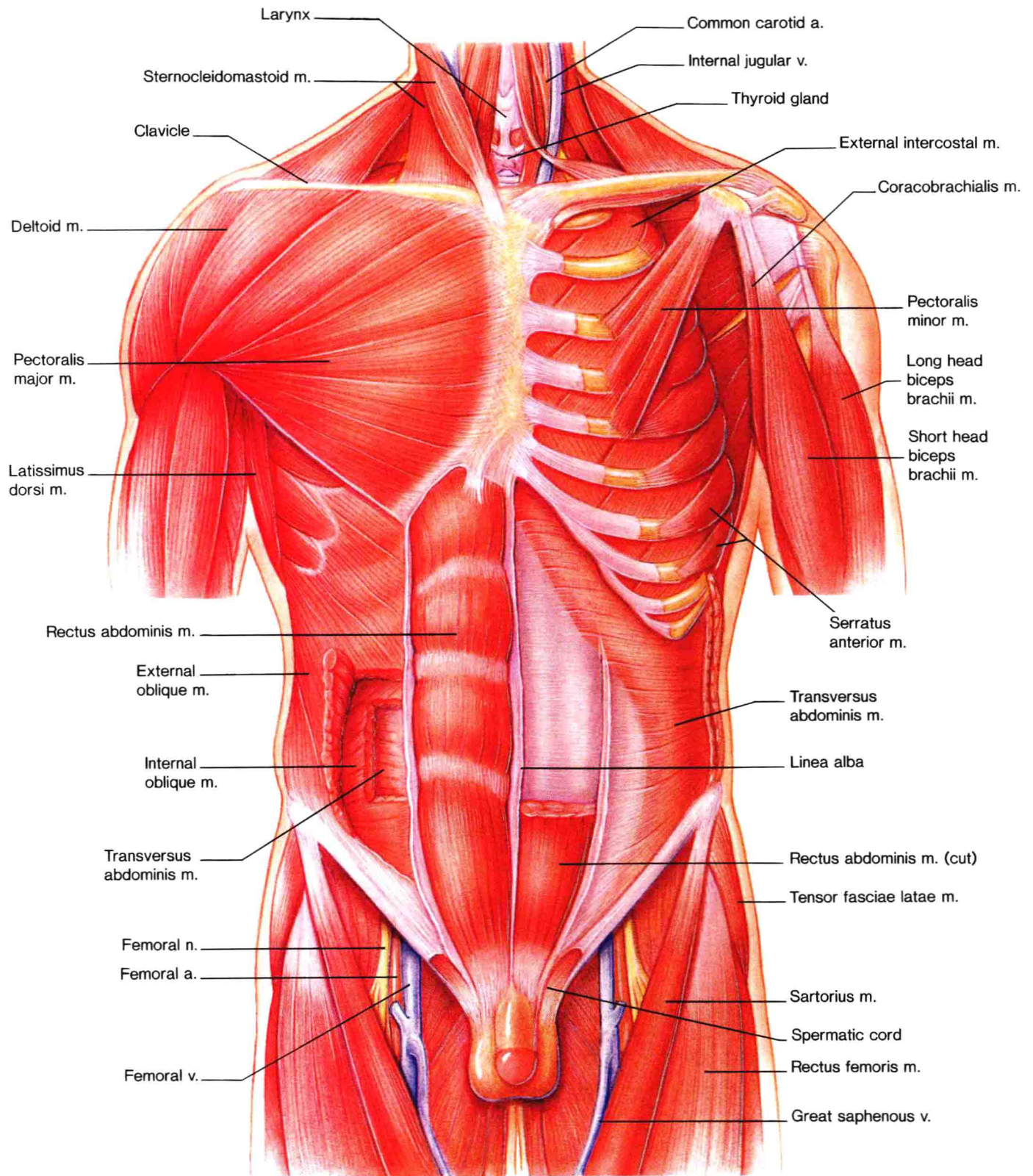


Female Sexual Development	Figure 22.28	<b>220</b>	Placenta	Figure 23.13	<b>228</b>
Fertilization	Figure 22.32	<b>221</b>	Umbilical Cord	Figure 23.14	<b>239</b>
Early Human Development	Figure 22.33	<b>222</b>	The Developing Placenta	Figure 23.15	<b>230</b>
Positive Feedback Mechanism	Figure 22.36	<b>222</b>	Maternal Blood	Figure 23.21	<b>231</b>
Stages in Birth	Figure 22.37	<b>223</b>	Fetal Circulation I	Figure 23.22a	<b>232</b>
Structure of the Breast	Figure 22.38	<b>224</b>	Fetal Circulation II	Figure 23.22b	<b>233</b>
Reproductive System	InnerConnections: Chapter 22	<b>225</b>	Newborn's Circulatory System	Figure 23.24	<b>234</b>
<b>Chapter 23</b>			<b>Chapter 24</b>		
Primary Germ Layers	Figure 23.6	<b>226</b>	First Meiotic Division	Figure 24.4	<b>234</b>
Human Embryonic Development	Figure 23.11	<b>227</b>	Crossing Over	Figure 24.5	<b>235</b>
Villus	Figure 23.12	<b>228</b>	Second Meiotic Division	Figure 24.6	<b>235</b>
			Maternal and Paternal Traits	Figure 24.7	<b>236</b>



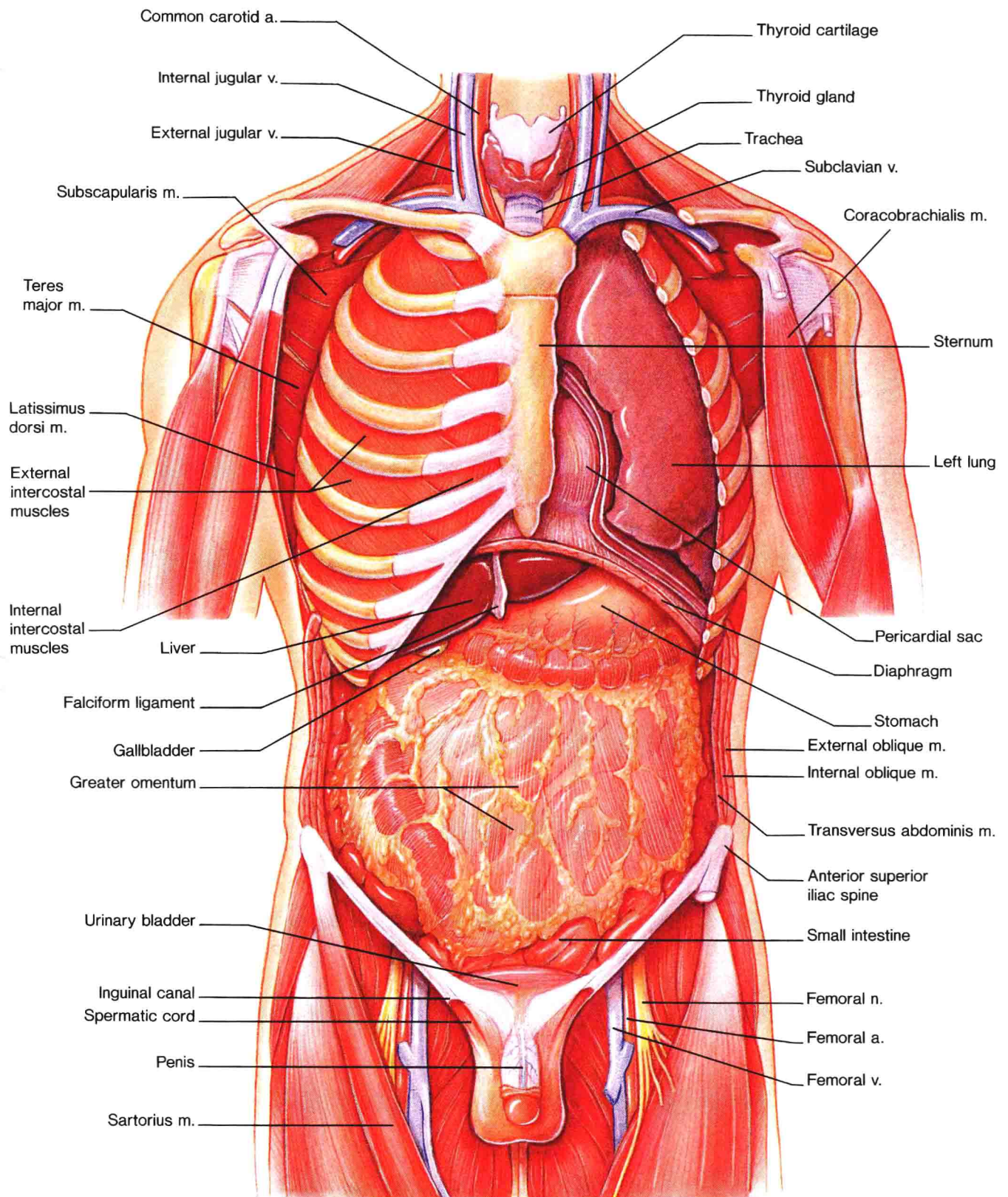
Human Torso, Anterior Surface and Superficial Muscles  
Reference Plate 1





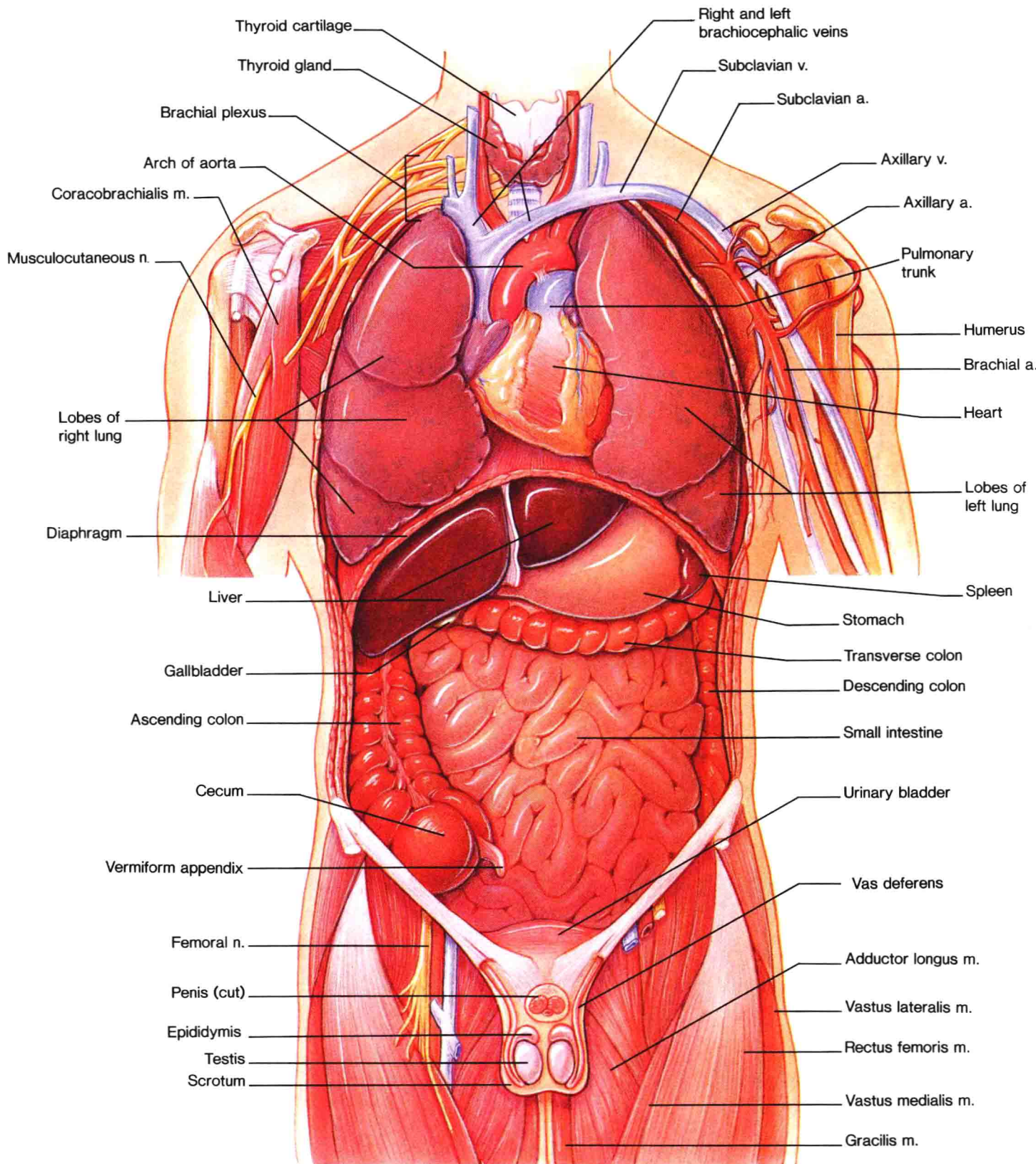
Human Torso, Deeper Muscle Layers  
Reference Plate 2





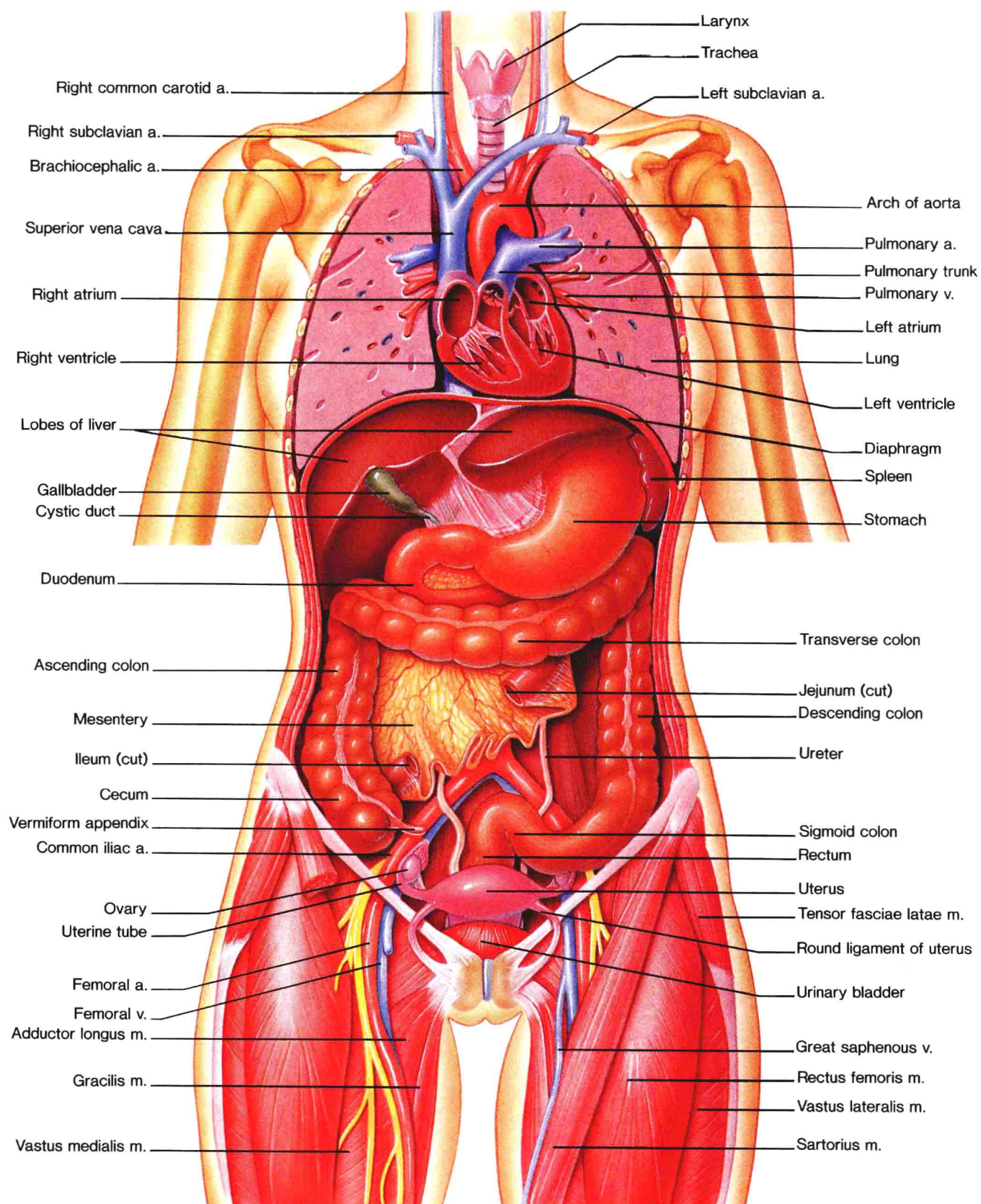
Human Torso, Abdominal Viscera  
Reference Plate 3





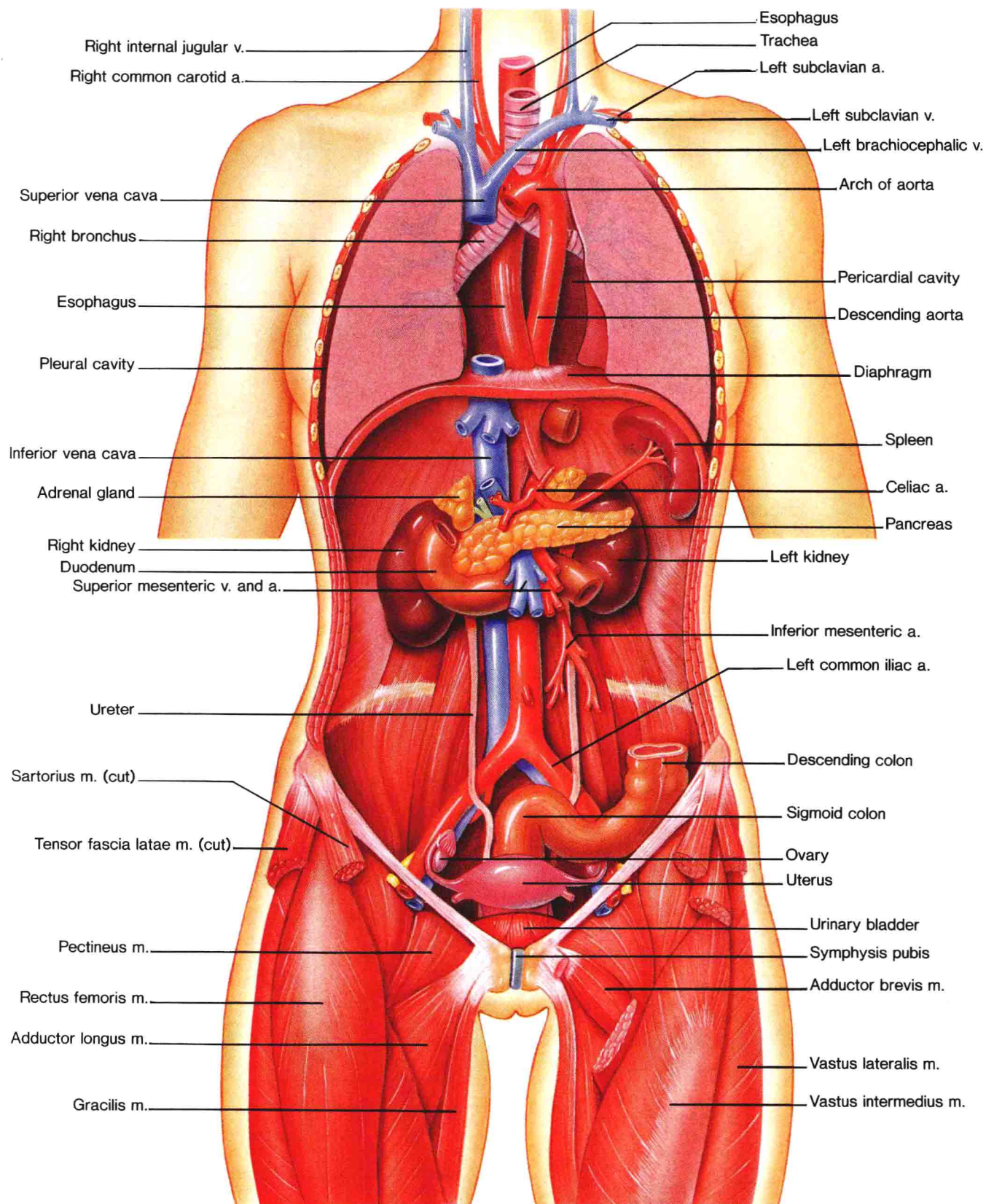
Human Torso, Thoracic Viscera  
Reference Plate 4





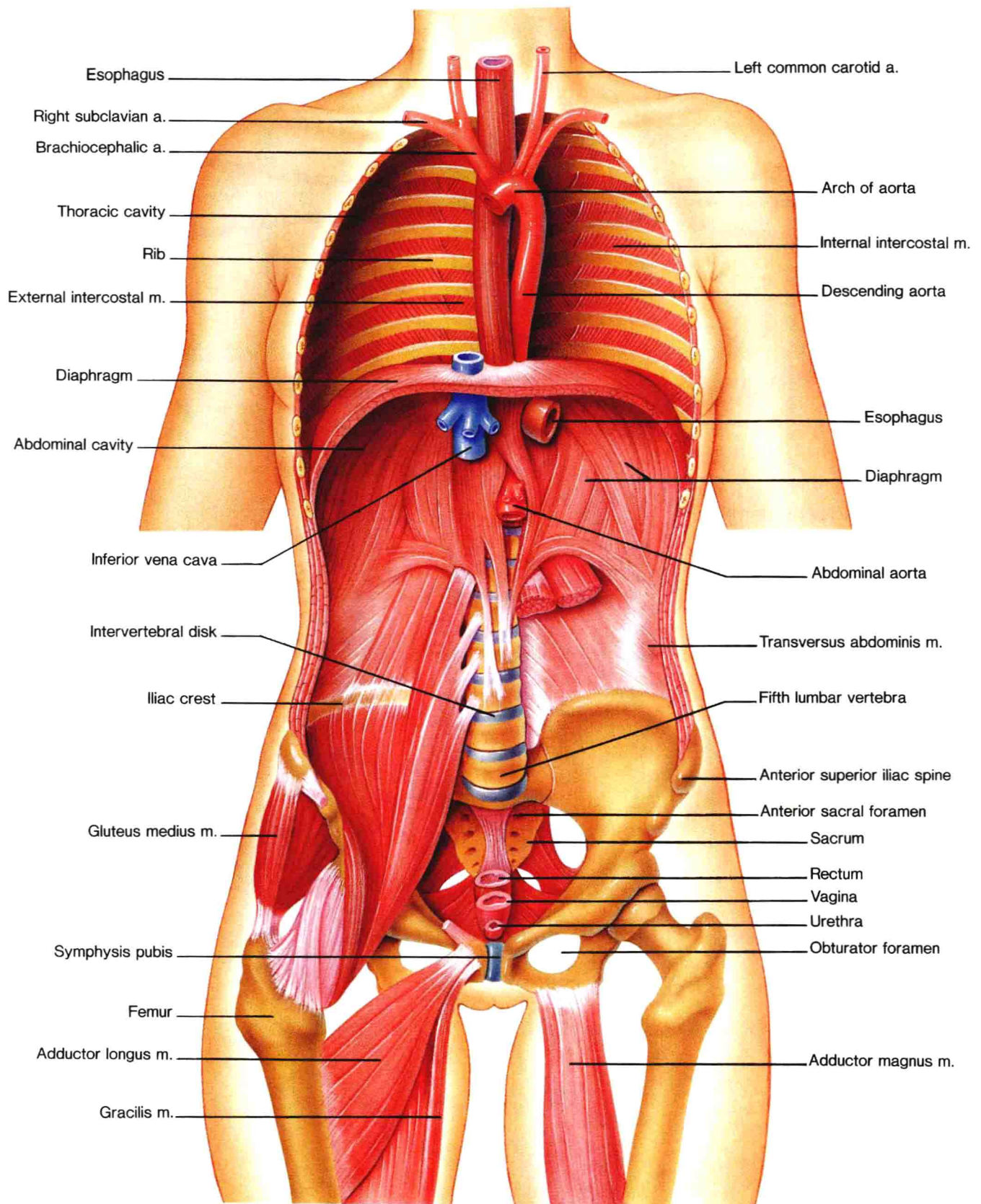
Human Torso, Lungs, Heart, and Small Intestine Sectioned  
Reference Plate 5



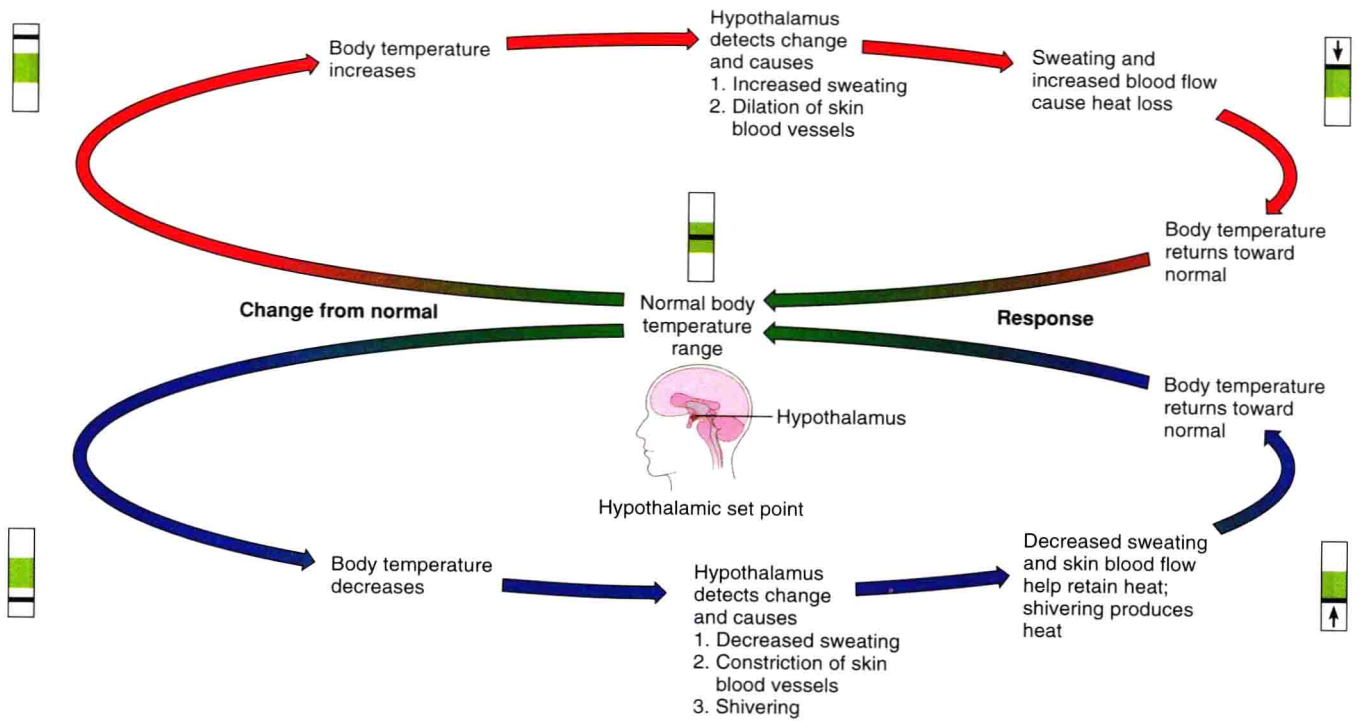


Human Torso, Heart, Stomach and Part of Intestine and Lungs Removed  
Reference Plate 6

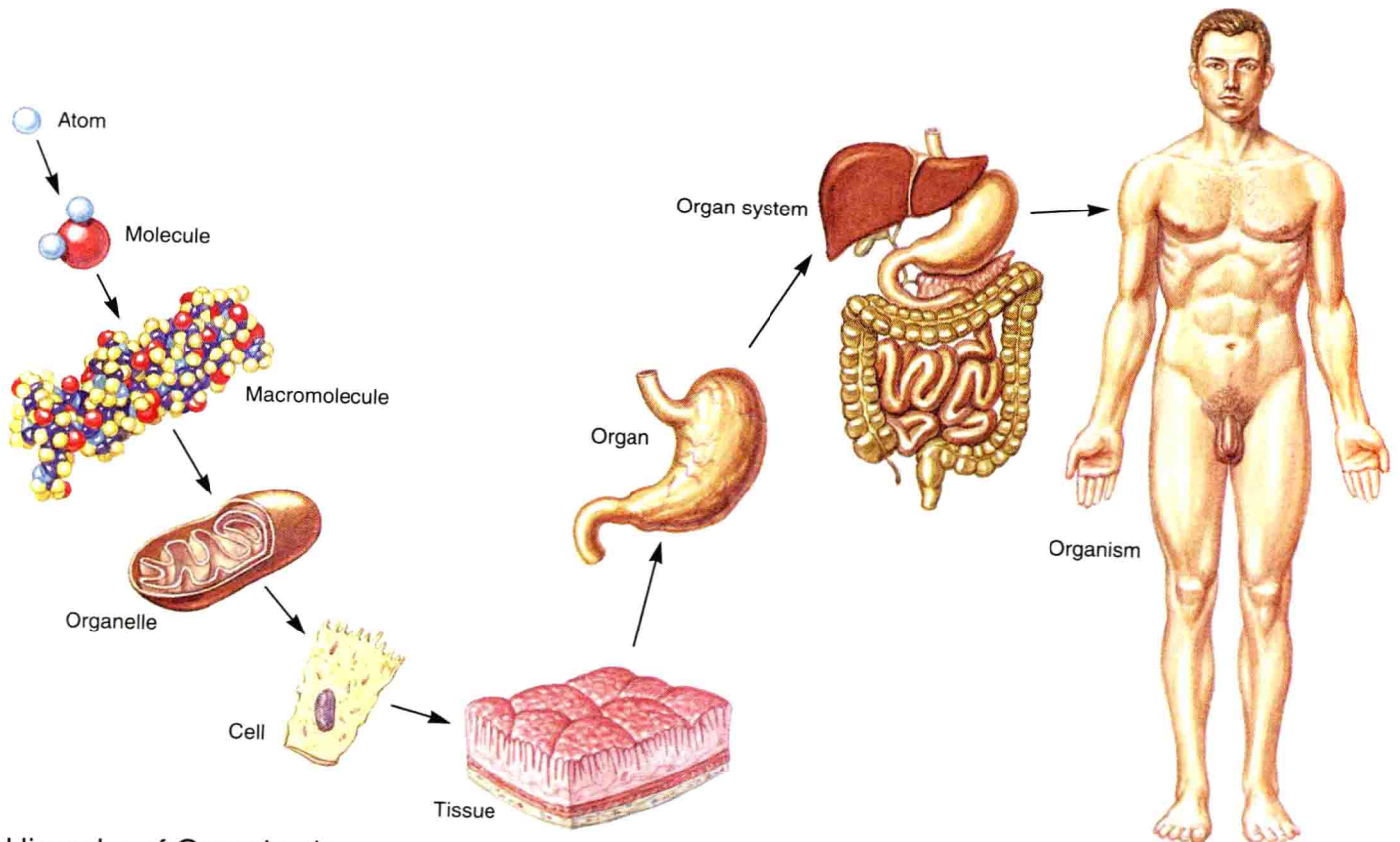




Human Torso, Visceral Organs Removed  
Reference Plate 7



Homeostatic Mechanism  
Figure 1.5



Hierarchy of Organization  
Figure 1.6