

TOP OFFICE

顶级办公

香港视界国际出版有限公司 主编

welc



华中科技大学出版社

<http://www.hustp.com>

顶级办公

香港视界国际出版有限公司 主编



华中科技大学出版社

<http://www.hustp.com>

中国·武汉

图书在版编目 (CIP) 数据

顶级办公 / 香港视界国际出版有限公司 主编. — 武汉 : 华中科技大学出版社, 2011.10

ISBN 978-7-5609-7431-6

I. ①顶… II. ①香… III. ①办公室 - 室内装饰设计 - 图集 IV. ①TU238-64

中国版本图书馆CIP数据核字 (2011) 第214304号

顶级办公

香港视界国际出版有限公司 主编

出版发行: 华中科技大学出版社 (中国·武汉)

地 址: 武汉市武昌珞喻路1037号 (邮编430074)

出 版 人: 阮海洪

责任编辑: 彭 江

责任监印: 张贵君

责任校对: 黎若君

装帧设计: 百彤文化

印 刷: 利丰雅高印刷 (深圳) 有限公司

开 本: 965 mm × 1270 mm 1/16

印 张: 18

字 数: 144千字

版 次: 2012年2月第1版 第1次印刷

定 价: 258.00元 (USD 51.99)



投稿热线: (020) 66638820 1275336759@qq.com

本书若有印装质量问题, 请向出版社营销中心调换

全国免费服务热线: 400-6679-118 竭诚为您服务

版权所有 侵权必究

PREFACE 序言

In the office space design, science, technology, humanity, art and many other factors need to be considered. The maximum target of interior design of office space is to create a comfortable and efficient work environment for the staff in order to improve staff's work efficiency to a greater extent. The goal becomes even more important in the today's increasing business competition, and it is the basis for the design of office space as well as the primary goal of office space design.

Unlike ordinary residential features, the use functions of interior office space comprise office, meeting and corridor area, and the office space is considered from these aspects which benefit office organizations, lighting and ventilation.

The biggest characteristic of office space is publicity, and the space is required to give consideration to the aesthetic needs and functional requirements of several staffs. The current design idea of office space most emphasizes three elements: firstly, the office space is divided into several team areas, and the team can freely arrange and use its public space which is distinguished from those of other teams for meeting, storing data, etc., and moreover, the teams can plan personal space according to the communication and work requirements of members and well design public space. Secondly, there are some office spaces now, but the public part is smaller; from the elevator into the lobby then into the office, it is lack of transformation process. A good design must have a kind of spatial transition, and it can not be that there is only the passage and corridor and it must have environment and have a process of transiting from public space to private space. As a public space, there is not only a formal meeting room and other public spaces, but also informal public space, such as a comfortable kitchen, deliberately vacated corners and so on. Informal public space can make staff meet each other naturally, and the ideas out of their casual talk often go beyond the serious meeting, and at the same time, the communication among the staff also is enhanced; while the office space should give staff autonomy, so that the staff can freely decorate their personal space. Thirdly, for users, there should be some preconception for the use of flat space, and they can use the developmental vision to look upon the changes of functions and scale of their own business office. In the decorative process, the designers should try their best to take a flexible division for space, and must have a clear understanding and use purpose for the location of columns and space outside the columns.

办公空间设计需要考虑科学、技术、人文、艺术等诸多因素。办公空间室内设计的最大目标是要为工作人员创造一个舒适、高效的工作环境,以便更大限度地提高员工的工作效率。这一目标在当前商业竞争日益激烈的情况下显得愈加重要,它是办公空间设计的基础,是办公空间设计的首要目标。

办公空间具有不同于普通住宅的特点,它是由办公、会议、走廊三个区域来构成内部空间使用功能的,并且从有利于办公组织以及采光通风等角度考虑。

办公空间的最大的特点是公共化,这个空间要照顾到多个员工的审美需要和功能要求。目前办公空间设计理念最为强调的要素有三个:首先,把办公空间分多个团队区域,团队可以自行安排将它和别的团队区别开来的公共空间用于开会、存放资料等,按照成员间的交流与工作需要安排个人空间;精心设计公共空间。其次,目前有一些办公空间,公共部分较小,从电梯一上来就进大堂,进办公室,缺乏转化的过程。一个好的设计必须要有一种空间的过渡,不能只有过道走廊,必须要有环境,要有一个从公共空间过度到私密空间的过程。作为公共空间,不仅要有正式的会议室等公共空间,还要有非正式的公共空间,如舒适的茶水间、刻意空出的角落等。非正式的公共空间可以让员工自然地互相碰面,其不经意中聊出来的点子常常超出一本正经的会议,同时,也使员工间的交流得以加强;同时办公空间要赋予员工以自主权,使其可以自由地装扮其个人空间。第三,对于使用者来说,对平面空间的使用应该有一定的预想,以发展的眼光来看待自身商务办公功能、规模的变化。在装修过程中,尽量对空间采取灵活的分割,对柱的位置、柱外空间要有明确的认识和使用目的。

编者按

CONTENTS

...目录

- | | | | |
|-----|--------------------------------------------------------------|-----|----------------------------------------------------------|
| 006 | BDO Eindhoven ICT
艾恩德霍文BDO ICT | 098 | LBI LBI办公 |
| 016 | Tencent Dazhu Building
腾讯大族大厦 | 108 | Xiexincheng office
协信城办公室 |
| 024 | Sony Ericsson Phase III
索尼爱立信三期 | 114 | Bekaert Jiangyin
贝尔卡特江阴 |
| 030 | Coca Cola Shanghai Office
可口可乐上海办公室 | 122 | Urban Pastoral Office
都市牧歌办公室 |
| 038 | Hong kong Huafeng Industrial
Eroda Office
香港华锋实业E路航办公室 | 130 | UXUS Office
UXUS 办公室 |
| 046 | Endemol Headquarters
Endemol公司总部 | 136 | The Place for Creating Source
原创地 |
| 056 | Cold . Warm 冷·暖 | 144 | Hanxiang Architectural Design
Studio
汉象建筑设计事务所办公室 |
| 062 | BCP CRONOS
BCP克罗诺司 | 150 | International Shipping
Company Office
国际航运公司办公室 |
| 068 | Sculpture among the Landmark
Buildings
地标建筑群中的雕塑 | 156 | Saxo Bank
盛宝银行 |
| 074 | "U" True Color
"U" 本色 | 162 | Liking Design, Shantou
汕头丽景公司 |
| 082 | Ganghui Xintiandi Modern
Office
港惠新天地现代办公室 | 172 | Integration 融合 |
| 088 | Ganghui Xintiandi Loft Office 2
港惠新天地LOFT办公2 | 178 | Heze Landscape Office
禾泽景观公司 |
| 092 | Xupin Xingjiang Office
叙品新疆办公室 | 186 | Yili Construction Enterprise
Headquarters
义力营造企业总部 |

- 196 Louyu
楼语
- 204 Shilin Office
士林办公室
- 214 Creating Group Design &
Dongtong Manufacturing
缔造组设计&东通制造
- 224 Freshness • Nature •
Conciseness • Elegance
清新·自然·简约·优雅
- 230 Accesolab
Accesolab办公室
- 238 Good Morning! Future
早安! 未来
- 244 Saegeling Medizintechnik
GmbH, Heidenau
海德瑙Saegeling Medizintechnik有限责任
公司
- 250 Guo Guang Yi Ye Dian
House Fortune Center
国广一叶点房财富中心
- 258 Maigao Office
麦高办公室
- 268 UBER CULTURE OFFICE
优佰文化办公室
- 276 THE BLACK BOX – Neri&Hu
Design Offices
黑盒子——如恩设计办公楼
- 282 Lonson Environmental Art
Design Office
朗升空间设计办公室





BDO Eindhoven ICT

艾恩德霍文BDO ICT

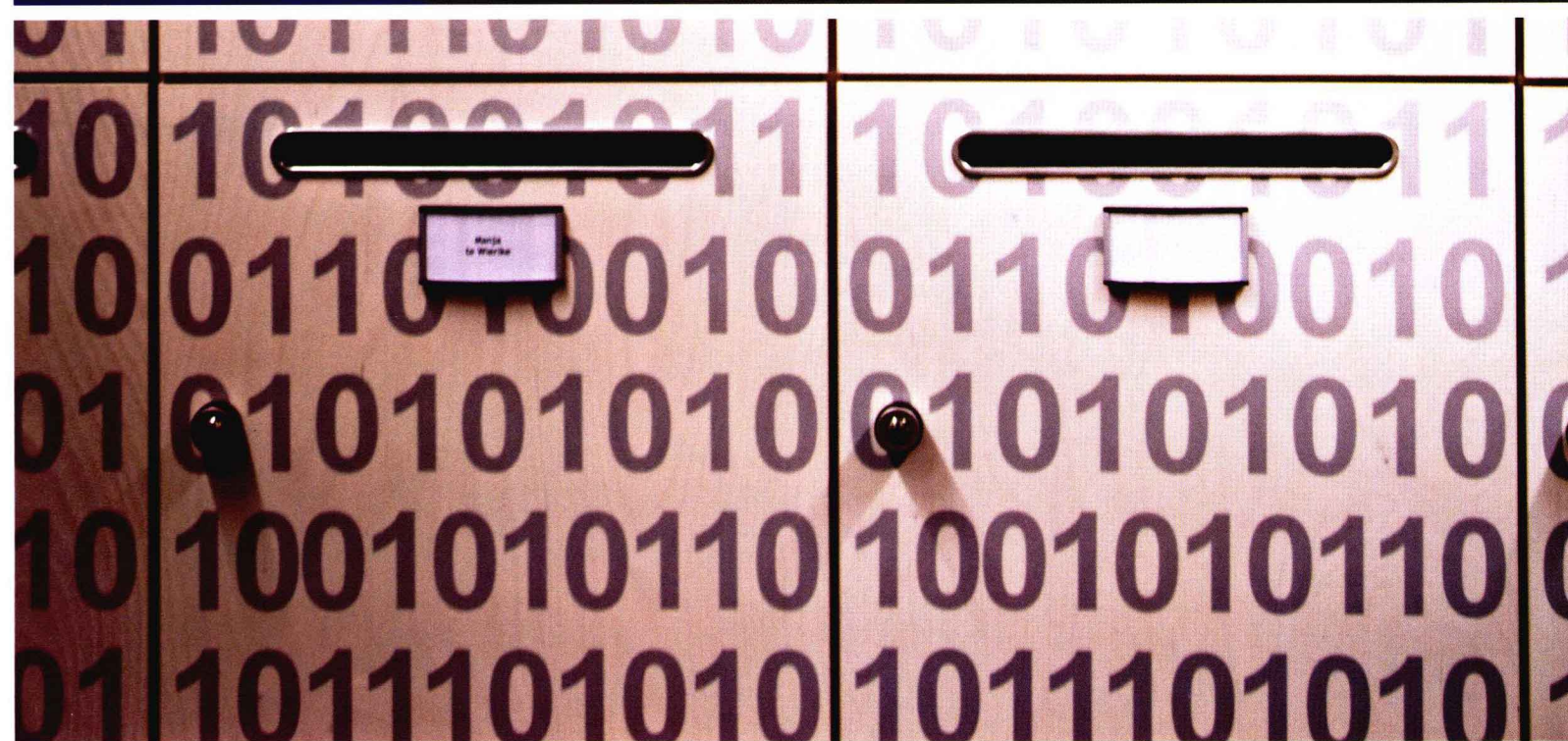


◆地点: Eindhoven, Holland ◆面积: 750 m² ◆设计师: Hans Marechal ◆摄影师: Studio de Winter ◆设计公司: M+R interior architecture ◆主要材料: Special recycled wood panels, glass, wool and felt fabrics, etc.

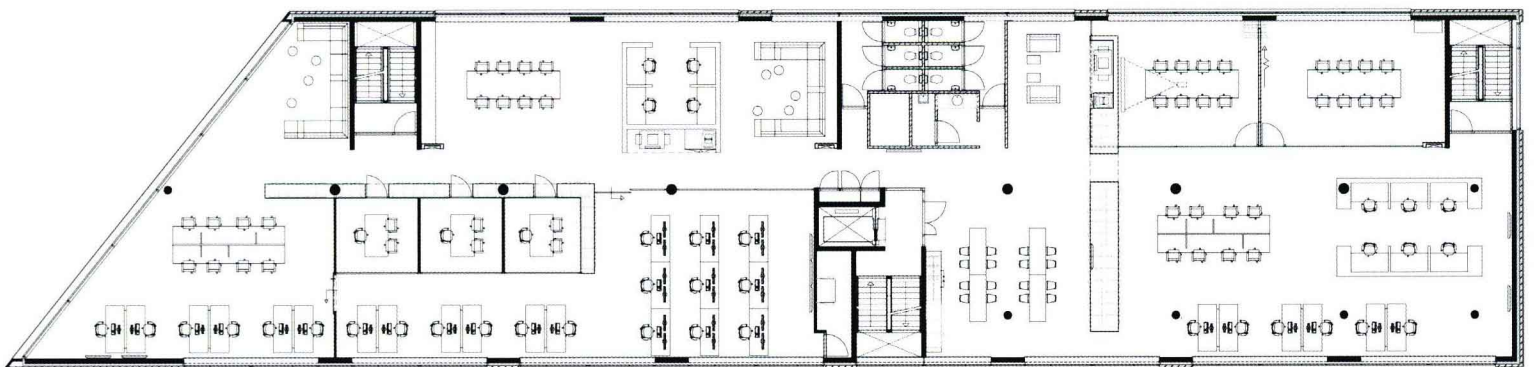


Since 2005 the central ICT service for the Dutch BDO organization is located in Eindhoven. While the BDO Eindhoven and Helmond division are combined, there was a need for extra office space. BDO found these extra square meters in a nearby located office building. The time and location independent work principle at BDO has been quite common; the consultants are often available to client based on their own. The ICT-activities support this service by increasing development and innovation

"online". For this part of the organization BDO commissioned M+R to create an innovative working environment with a variety of flexible workplaces, brainstorming and consultation/teleconference rooms. In this space, the various functions such as the helpdesk (international), meeting rooms and silence areas are separated by glass walls. In this way the acoustic quality is assured and the whole area remains transparent. Sound-absorbing surfaces are included in the ceiling and cupboard doors.







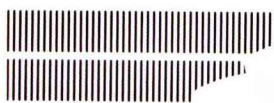
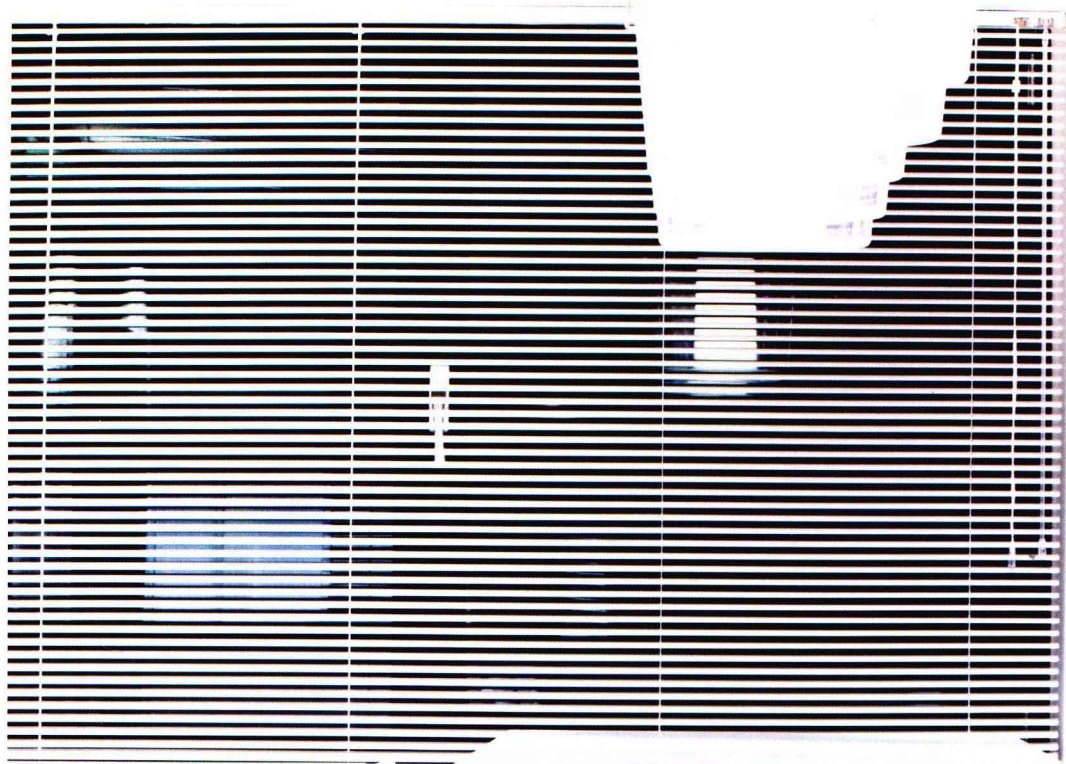


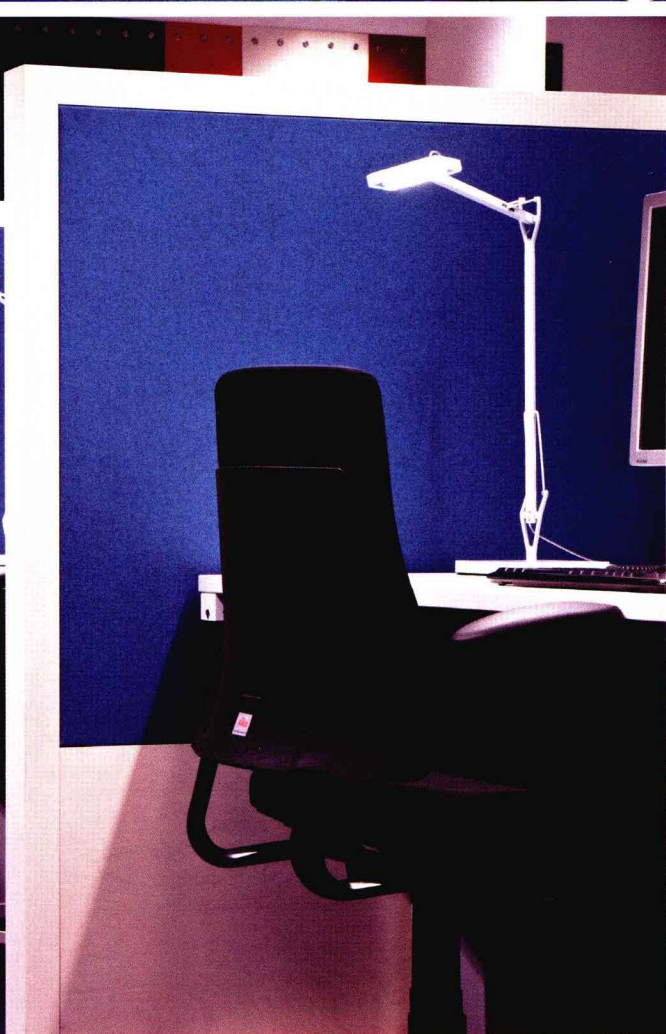
自2005年以来, 荷兰BDO组织的中央信息、通信和技术服务设在艾恩德霍文。尽管艾恩德霍文BDO和赫尔蒙德部门结合, 但仍需要一个额外的办公空间。BDO将这些额外办公空间建在附近的一栋办公楼。时间、地点独立的工作原则在BDO已相当普遍, 根据自己的时间, 顾问们能方便地为顾客提供服务。信息、通信和技术活动通过增加开发和“在线”创新支持服务。对于组织的这部分, BDO委托M + R创建了包含多种灵活工作场所、集体研讨区、咨询或远程会议区的工作环境。在这个空间, 玻璃墙隔开了国际服务台、会议室和安静区域等各种功能。这样音质就得到了保证而且整个区域保持透明。天花板和橱柜门上都包含吸音表面。

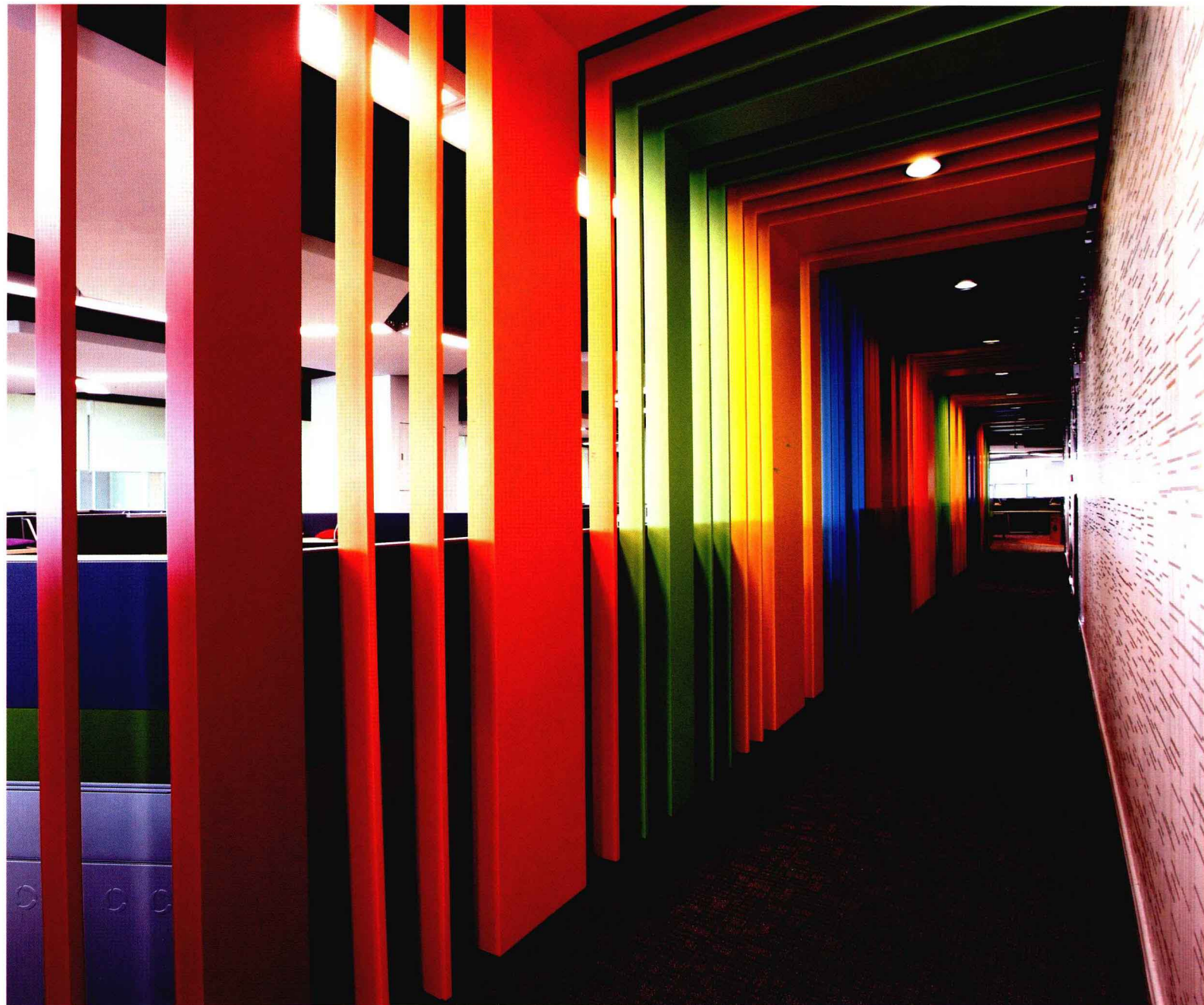












Tencent Dazu Building

腾讯大族大厦

>>>

◆地点：广东深圳 ◆面积：24,621 m² ◆设计师：何大为、张骥、李炫颐、李景瑞、高涛
◆摄影师：孙忠宝 ◆设计公司：康新创意设计 ◆主要材料：石膏板乳胶漆造型、
微晶石黑色、杜邦可丽耐、防火板绿色艺术纹理、人造石白色、墙纸、拉丝不锈钢等



To challenge the concept of the traditional office and create a unique working space full of creativity, edg Creatives took part in a detailed discussion for the new headquarters of Tencent in Shenzhen. Using "regenerative design" they helped to push for the high flexibility of its interior design, as well as provide various configurations and selections of environmentally-friendly materials. This not only ensured the comfort of the staff's working space, but also the comfort of staff's workplace psychology.

"Between Two Worlds" is the design concept, which represents that the company's business is between reality and virtual-reality. Open communication space is beside the open working area, which provides the staff of Tencent with flexible working space and chances for random communication encounters. The background wall in the open office area and meeting room highlights images from cartoons, electronic adventure games and children's fairy tales.