

# Large Office Space

## 大型办公空间

深圳市创意文化传播有限公司 策划 徐宾宾 主编



## 图书在版编目(CIP)数据

大型办公空间 / 徐宾宾主编. - 武汉: 华中科技大学出版社, 2011.12  
ISBN 978-7-5609-7616-7

I. ①大… II. ①徐… III. ①办公室-室内装饰设计-图集 IV. ①TU243-64

中国版本图书馆CIP数据核字(2011)第271124号

### 大型办公空间

徐宾宾 主编

出版发行: 华中科技大学出版社(中国·武汉)

地 址: 武汉市洪山区珞喻路1037号(邮编: 430074)

出 版 人: 阮海洪

责任编辑: 王晓甲

责任校对: 赵慧蕊

责任监印: 秦 英

装帧设计: 刘一佳

印 刷: 利丰雅高印刷(深圳)有限公司

开 本: 965mm×1270mm 1/16

印 张: 21

字 数: 168千字

版 次: 2012年2月第1版 第1次印刷

定 价: 298.00元 (USD 59.99)



本书若有印装质量问题, 请向出版社营销中心调换  
全国免费服务热线: 400-6679-118 竭诚为您服务  
版权所有 侵权必究



# Large Office Space

# 大型办公空间

深圳市创扬文化传播有限公司 策划 徐宾宾 主编



华中科技大学出版社

<http://www.hustp.com>

# CONTENTS 目录

- |    |   |     |  |
|----|---|-----|--|
| 5  | New Office Design for the ICADE Premier House, Munich<br>慕尼黑ICADE新豪华办公室设计 | 83  | Huaqin Group Shanghai Headquarters<br>Office Building<br>华勤集团上海总部办公楼                 |
| 13 | New Office of Signa Holding Headquarters<br>Signa Holding总部新办公室           | 91  | Astral Media<br>星光传媒   |
| 19 | LHI Headquarters<br>LHI总部   | 97  | Fraunhofer Portugal<br>葡萄牙弗劳恩霍夫办公室   |
| 29 | Guo Guang Yi Ye Decoration Group Xiamen Branch<br>国广一叶厦门设计分公司             | 105 | DLA Piper Office<br>欧华律师事务所  |
| 37 | Hejian Health Care Company<br>和佳医疗公司                                      | 113 | Maxium<br>马克斯恩   |
| 45 | The Office of Pengcheng Real Estate (Shenzhen)<br>彭成地产(深圳)办公楼             | 121 | Auto Workers Community Credit Union<br>AWCCU银行                                       |
| 51 | The Office of Vanke Real Estate (Chongqing)<br>万科地产(重庆)办公楼                | 129 | HudBay Minerals Inc. Offices<br>HBM公司办公室   |
| 59 | Kustermann Park<br>Kustermann园区   | 137 | DDB Office<br>DDB办公室   |
| 67 | The Office of Bank of Moscow<br>莫斯科银行办公室                                  | 147 | Allen & Overy Office<br>Allen & Overy办公室   |
| 75 | Office of Haiyue Dunhua North Road<br>海悦敦化北路办公室                           | 155 | GLOBAL HEADQUARTER OF DONG CAN<br>HARDWARE TOOLS TRADING COMPANY<br>东灿五金工具贸易有限公司全球总部 |

**165** Universe Express International Textile Co., Ltd  
宇宙运通国际纺织公司

**175** ADA1 – Office Building  
An der Alster 1 办公楼

**183** Alsea's New Branch  
Alsea的新分店

**189** San Pablo Group Corporate Offices  
圣巴勃罗集团办公室

**197** BID Office  
BID 办公室

**205** Office for Rabobank Nederland  
荷兰拉博银行总部

**211** Voest Alpine Office Center  
Voest Alpine 办公楼

**221** Offices for International Shipping Company  
国际轮船公司办公室

**233** Glem Offices  
Glem 办公室

**243** GE Energy Financial Services Headquarters  
GE 能源金融服务总部

**251** Koza Holding Headquarters  
Koza 控股总部

**261** SEAT Yellow Pages  
Seat 黄页

**269** Wuchang Guanggu Software Park Office Building  
武昌光谷软件园办公楼

**279** Huafeng Industry E Road Hang Office, Hongkong  
香港华锋实业E路航办公室

**287** SUNONE Office Space  
SUNONE 办公空间

**297** Shenzhen Oriental Boyaa Technology Co., Ltd.  
深圳市东方博雅科技有限公司

**303** Zhongqi Green Headquarters Guangfo Base Office  
中企绿色总部广佛基地办公室

**311** Office of the Forward Media Group Publishing House  
Forward Media Group 出版社办公室

**323** Yandex Internet Company Office in Moscow  
莫斯科 Yandex 网络公司办公室

**331** Guangdong Province Zhumin Guarantee Co., Ltd.  
广东省助民担保有限公司





# New Office Design for the ICADE Premier House, Munich 慕尼黑ICADE新豪华办公室



设计公司: Landau + Kindelbacher Architects – Interior Designer

项目地点: 德国慕尼黑

建筑面积: 650平方米

摄影师: Christian Hacker、Werner Huthmacher

The implementation of the company philosophy in architectural corporate identity is reflected not only in the entrance lobby, the cafeteria, the conference areas, the auditorium, and the management areas, but also in the design of the workplaces. The new style emphasizes perfectly the company's slogan – quality in everything we do.

The open character of the building is enhanced by bright, elegant colors in the entrance hall. The use of wood, natural stone and Corian as a recurring design element produces a natural, warm atmosphere. The design concept runs through the entire object; even the elevators are lined with natural stone, and the façades of the entrance hall are adorned with it. As the dominant color, a strong Bordeaux red was chosen for carpets and leather coverings to provide a contrast to the partially illuminated white and the warm wood tones. The auditorium is one of the gems of this object, providing a successful symbiosis between the Corian as the enclosing casing for the interior and exterior and the use of warm wood and technical fabric wall covering for the interior.

The library also deserves attention with its division into reception, reading, and lending areas. The cafeteria exudes a friendly, open character: both the choice of colors and the furniture invite visitors to linger.

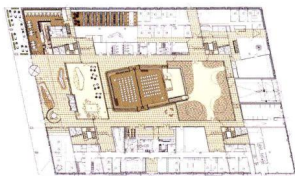








项目平面布置图一



项目平面布置图二







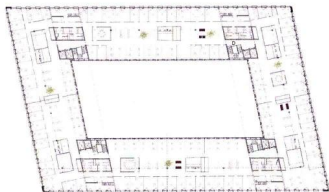




设计公司的建筑哲学理念不仅仅体现在入口、大厅、咖啡厅、会议室、会堂和管理区，还体现在工厂的设计上。新的风格非常完美地强调了公司的口号“保证一切质量”。

入口、大厅明亮高雅的颜色增强了建筑的开放性。木板、自然石和人造石等打造了一个自然温暖的气氛。设计理念贯穿整个建筑，甚至电梯也采用自然石建造而成。入口外墙采用自然石装饰。红色作为主色调，运用于地毯和皮革覆盖物上，与部分白色和暖色调形成对比。会堂是建筑中一个亮点，完美地体现出室内外封闭的人造石外壳和内部暖木色工艺布墙的互动性。

图书馆也很有特色，分为接待室、阅览室和借阅室。咖啡厅和谐的情调让参观者驻足停留。



项目平面布置图三





# New Office of Signa Holding Headquarters Signa Holding 总部新办公室



设计公司: Landau + Kindelbacher Architects – Interior Designer

项目地点: 奥地利因斯布鲁克

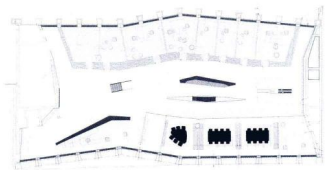
建筑面积: 1200平方米

摄影师: Christian Hacker

Together with the ceremonious opening of the Tyrol department store, the new headquarters of Signa Holding was opened with a luxurious interior design on Tyrol's top two floors.

In addition to generous office spaces and conference areas, there is also a public lounge where employees can relax and enjoy a fantastic view of Innsbruck. Elegance and understatement, accompanied by an unusual mixture of materials and accentuated lighting, complete this extraordinary building. On the lower floor are the reception, a coffee bar and office areas, while the upper floor is reserved for business activities with conference rooms and the owner's office. This arrangement is reflected in the choice of colors and materials. A sculptural staircase carved out of Tyrolean walnut is a local material reference that optically connects the two function areas. These terminate in a distinctive bar element that encourages communicative exchanges. Terrazzo flooring, precious woods, leather-lined walls and furniture, fine fabrics made of textiles and metals, plus the elaborate workmanship in the various materials, emphasize the clear and fine elegance of the new premises.





项目平面布置图

随着蒂罗州百货公司的隆重开业，Signa Holding的新总部也开业了，这个办公室设计豪华，位于百货大楼的顶层，占两层楼。

这个新总部不仅有大量的办公室和会议室，还有一个公共休息区，意在让员工们放松心情，同时享受因斯布鲁克的美景。特殊的材料混搭，加上突出的照明，还有随之而来的优雅含蓄共同构造了这个非凡的建筑。这个办公场所的首层为接待区、咖啡吧和办公区，二层则包括会议室和总裁办公室。功能区域的差异同时也反映在色彩和材质的选择上。雕塑般的胡桃木制的楼梯在材料的观感上将两层楼连接起来。此外，空间中还采用了显眼的酒吧元素来鼓励并带动交流。水磨石地板、珍贵木材、皮革软包装饰墙面和家具、纺织品和金属混合制成的精致织物，加之各个环节的精细做工，所有这些因素组成了Signa Holding明朗而优雅的新办公空间。



