

托业考试终极复习 = 高仿真模拟试题1000题

5
sets

(韩) 李恩奎

(美) John Boswell

编

徐琪方 译

Tomato TOEIC Actual Tes, 5sets

300万人
使用的新题型
托业丛书

最新托业

全真模拟试题集

收录5套实战模拟试题 (听力+阅读)
问题 + 注释 (PART 5&6) + 全部听力脚本

清华大学出版社

PLATE 中文对照图例 100 — 常用建筑构造节点详图

5
sets

第 1 册
第 2 册
第 3 册

中国建筑工业出版社

最新排版



全真模拟试题集

本书是根据《注册建筑师资格考试大纲》编制的，可作为注册建筑师资格考试的模拟试题集。

中国建筑工业出版社

H319.6
L263



郑州大学 *04010748047Z*

(韩) 李恩奎 编
(美) John Boswell
徐琪方 译

最新托业 全真模拟试题集



清华大学出版社
北京

H319.6
L263

内 容 简 介

本书由韩国托业考试领域权威的培训专家编写,是韩国最受欢迎和认可的托业备考书之一。全书包含5套最新托业全真模拟试题及详细的答案及解析,并附配与听力试题配套的高清晰、地道的录音光盘。有很强的模拟训练价值。

本书适合于所有托业考试的备考人员。

Tomato TOEIC Actual Test (5sets)

Copyright © 2009, Neungyule Education Inc.

Simplified Chinese translation edition © 201X, Tsinghua University Press

ALL RIGHTS RESERVED.

Simplified Chinese translation rights arranged with

Neungyule Education Inc. through Imprima Korea Agency

北京市版权局著作权合同登记号:图字:01-2011-0443

版权所有,侵权必究。侵权举报电话:010-62782989 13701121933

图书在版编目(CIP)数据

最新托业全真模拟试题集/(韩)李思奎,(美)鲍斯威尔编;徐琪方译.--北京:清华大学出版社,2012.2

书名原文:Tomato TOEIC Actual Test, 5sets

ISBN 978-7-302-27643-2

I. ①最… II. ①李… ②鲍… ③徐… III. ①英语—水平考试—习题集 IV. ①H319.6

中国版本图书馆CIP数据核字(2011)第265891号

责任编辑:刘细珍

封面设计:常雪影

责任校对:王凤芝

责任印制:何 芊

出版发行:清华大学出版社

网 址: <http://www.tup.com.cn>, <http://www.wqbook.com>

地 址:北京清华大学学研大厦A座 邮 编:100084

社总机:010-62770175 邮 购:010-62786544

投稿与读者服务:010-62776969, c-service@tup.tsinghua.edu.cn

质 量 反 馈:010-62772015, zhiliang@tup.tsinghua.edu.cn

印 刷 者:北京富博印刷有限公司

装 订 者:北京市密云县京文制本装订厂

经 销:全国新华书店

开 本:185mm×260mm 印 张:18 字 数:490千字
(附光盘1张)

版 次:2012年2月第1版

印 次:2012年2月第1次印刷

印 数:1~5000

定 价:38.00元

序言

所有的备考者都希望利用尽可能短的时间获得尽可能高的分数。为了能够帮助大家实现这一梦想,作者编写了《最新托业全真模拟试题集》一书。

本书旨在帮助学习者进一步熟悉美国教育考试中心编制的托业考试题。托业考试的备考没有捷径可走,但是通过大量的模拟练习,能够最大限度地加强备考效果。各位学习者可以通过基础教材或者其他参考书来了解和熟悉托业考试。然后通过模拟考试习题来提高分数。这是准备托业考试的关键。

本册教材共收录五套实战模拟题,内容丰富翔实。本书的主要特点:

1. 五套模拟实战水平的托业“听力+阅读”测试题

五套模拟题帮助读者测试自身实力,熟悉实战题目类型。

2. 听力原文+答案解析

听力部分都附原文脚本,并随书附赠高清晰高仿真的 MP3 声音资料,帮助读者从容应对听力测试。另外为了满足读者需要,所有的试题都附有答案和必要的解释说明。

3. 充分考虑读者需要

全书没有不必要的内容,简繁适中,难易适度,仅此一册,便于读者携带。

相信本书将成为各位托业备考者的好帮手。

编者

目录

	试题	答案与解析
ACTUAL TEST 01	4	218
ACTUAL TEST 02	46	232
ACTUAL TEST 03	88	244
ACTUAL TEST 04	130	258
ACTUAL TEST 05	174	272

5

ACTUAL TEST — 01

4

PART3 conversations

PART2 question-response

PART1 photographs

PART4 short talks



PART7 reading comprehension



PART5 incomplete sentences



PART6 text completion



LISTENING TEST

In the Listening test, you will be asked to demonstrate how well you understand spoken English. The entire Listening test will last approximately 45 minutes. There are four parts, and directions are given for each part. You must mark your answers on the separate answer sheet. Do not write your answers in your test book.

PART 1

Directions: For each question in this part, you will hear four statements about a picture in your test book. When you hear the statements, you must select the one statement that best describes what you see in the picture. Then find the number of the question on your answer sheet and mark your answer. The statements will not be printed in your test book and will be spoken only one time.

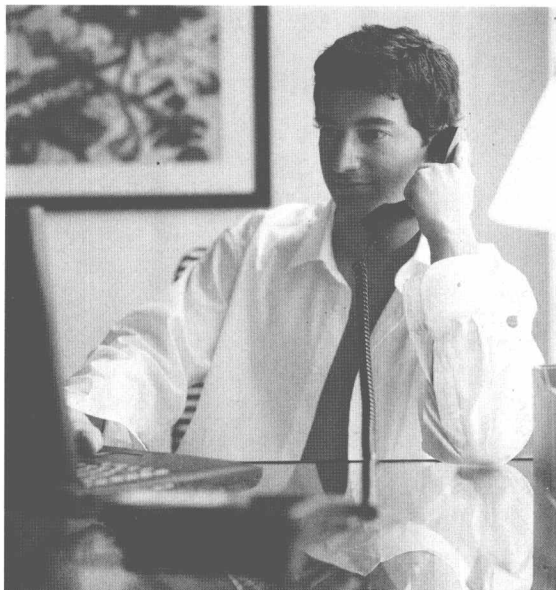
Example**Sample Answer**

(A) ☒ (C) (D)



Statement (B), "They're talking in a group," is the best description of the picture, so you should select answer (B) and mark it on your answer sheet.

1.



2.



Go on to the next page.

3.



4.



5.



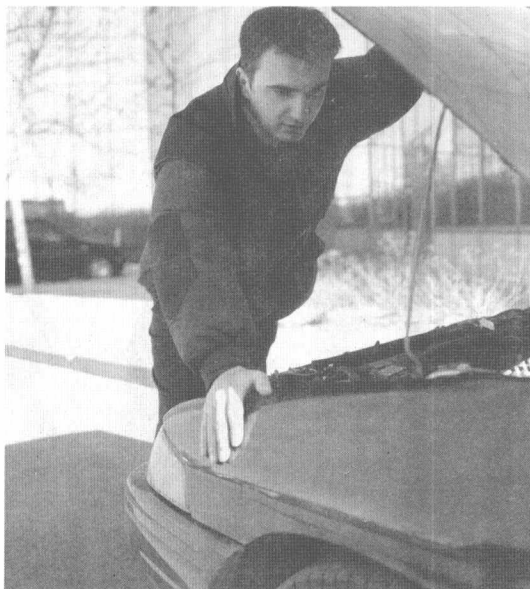
6.



7.



8.



9.



10.



Go on to the next page.

PART 2

Directions: You will hear a question or statement and three responses spoken in English. They will not be printed in your test book and will be spoken only one time. Select the best response to the question or statement and mark the letter (A), (B), or (C) on your answer sheet.

Example

You will hear: Where is the meeting room?

You will also hear: (A) To meet the new director.

(B) It's the first room on the right.

(C) Yes, at two o'clock.

Sample Answer

(A) ● (C)

The best response to the question "Where is the meeting room?" is choice (B), "It's the first room on the right," so (B) is the correct answer. You should mark answer (B) on your answer sheet.

- | | |
|--|--|
| 11. Mark your answer on your answer sheet. | 26. Mark your answer on your answer sheet. |
| 12. Mark your answer on your answer sheet. | 27. Mark your answer on your answer sheet. |
| 13. Mark your answer on your answer sheet. | 28. Mark your answer on your answer sheet. |
| 14. Mark your answer on your answer sheet. | 29. Mark your answer on your answer sheet. |
| 15. Mark your answer on your answer sheet. | 30. Mark your answer on your answer sheet. |
| 16. Mark your answer on your answer sheet. | 31. Mark your answer on your answer sheet. |
| 17. Mark your answer on your answer sheet. | 32. Mark your answer on your answer sheet. |
| 18. Mark your answer on your answer sheet. | 33. Mark your answer on your answer sheet. |
| 19. Mark your answer on your answer sheet. | 34. Mark your answer on your answer sheet. |
| 20. Mark your answer on your answer sheet. | 35. Mark your answer on your answer sheet. |
| 21. Mark your answer on your answer sheet. | 36. Mark your answer on your answer sheet. |
| 22. Mark your answer on your answer sheet. | 37. Mark your answer on your answer sheet. |
| 23. Mark your answer on your answer sheet. | 38. Mark your answer on your answer sheet. |
| 24. Mark your answer on your answer sheet. | 39. Mark your answer on your answer sheet. |
| 25. Mark your answer on your answer sheet. | 40. Mark your answer on your answer sheet. |

PART 3

Directions: You will hear some conversations between two people. You will be asked to answer three questions about what the speakers say in each conversation. Select the best response to each question and mark the letter (A), (B), (C), or (D) on your answer sheet. The conversations will not be printed in your test book and will be spoken only one time.

41. What does the man ask Jennifer to do?
(A) Check the train schedule
(B) Change an appointment time
(C) Come in to work tomorrow
(D) Call the president's secretary
42. What will the man do tomorrow morning?
(A) Meet with the client
(B) Visit the president's office
(C) Order more supplies
(D) Go on a business trip
43. When will the man probably meet the client tomorrow?
(A) At 8 a.m.
(B) At 10 a.m.
(C) At 1 p.m.
(D) At 2 p.m.
44. What kind of company does the man work for?
(A) A construction company
(B) A TV broadcasting company
(C) A printing company
(D) An electronics company
45. How does the man explain the change in the woman's order?
(A) The order was taken incorrectly.
(B) The contact number had been changed.
(C) The account number was wrong.
(D) The woman didn't want the brochures.
46. What information is the woman asked to provide?
(A) Her office address
(B) Her account number
(C) Her account balance
(D) Her cell phone number

Go on to the next page.