

COLLECTION OF THE 18TH ASIA-PACIFIC INTERIOR DESIGN AWARDS

第十八届亚太区室内设计大奖参赛作品选

# LIVING SPACE

居住空间

18<sup>th</sup> APIDA



翟东晓 / 深圳市创福美图文化发展有限公司 编著  
大连理工大学出版社

METTO



COLLECTION OF THE 18TH ASIA-PACIFIC INTERIOR DESIGN AWARDS

第十八届亚太区室内设计大奖参赛作品选

# LIVING SPACE

居住空间

18<sup>th</sup> APIDA

翟东晓 / 深圳市创福美图文化发展有限公司 编著  
大连理工大学出版社

METTO

## 图书在版编目(CIP)数据

第十八届亚太区室内设计大奖参赛作品选. 居住空间  
: 汉英对照 / 翟东晓, 深圳市创福美图文化发展有限公司编著. — 大连 : 大连理工大学出版社, 2011.8

ISBN 978-7-5611-6295-8

I. ①第… II. ①翟… ②深… III. ①室内装饰设计—亚太地区—图集②住宅—室内装饰设计—亚太地区—图集 IV. ①TU238-64②TU241-64

中国版本图书馆CIP数据核字(2011)第120700号

---

出版发行: 大连理工大学出版社

(地址: 大连市软件园路80号 邮编: 116023)

印 刷: 利丰雅高印刷(深圳)有限公司

幅面尺寸: 242mm × 263mm

印 张: 25

插 页: 4

出版时间: 2011年8月第1版

印刷时间: 2011年8月第1次印刷

责任编辑: 初 蕾

责任校对: 仲 仁

装帧设计: 刘竞华

文字翻译: 梁 伟

---

ISBN 978-7-5611-6295-8

定 价: 280.00元

电 话: 0411-84708842

传 真: 0411-84701466

邮 购: 0411-84703636

E-mail: designbooks\_dutp@yahoo.cn

URL: <http://www.dutp.cn>

设计书店全国联销: [www.designbook.cn](http://www.designbook.cn)

如有质量问题请联系出版中心: (0411) 84709246 84709043

The exclusive distributorship in Taiwan is offered to ArchiHeart Corporation.

Any infringement shall be subject to penalties.

中国台湾地区独家经销权委任给ArchiHeart Corporation(心空间文化事业有限公司), 侵权必究。



## PREFACE

## 前言



**Po Po Leung**

Chairlady of APIDA 2010

I am honoured to have the opportunity to organize this year awards and we have completely revamped the APIDA design this year, in recognition that the award is into the 18th year. The concept comes from a simple geometrical form that can shape into many possibilities.

We have nearly 600 entries from the Asia-Pacific region, including Australia, Japan, Singapore, Malaysia, Thailand, Indonesia, Mainland China, Hong Kong China and Taiwan China and I am overwhelmed by their standard and quality of works. Choosing the best design among these very compet-

itive entries was an extremely difficult task for our eminent panel of jurors to whom we are deeply indebted.

The success of the awards lies in the fact that it has drawn the focus and recognition of the interior design professionals within the Asia-Pacific region.

I congratulate all the winning teams and all the participants for their courage and aspiration to meet the new demands of this fast changing economy.



**Horace Pan**

Chairman  
Hong Kong Interior Design  
Association 2010

Dear Honorable Guests and Members,

It's my honor to be elected as the new chairman of HKIDA.

APIDA has proved to be a remarkable index at Asia-Pacific Rim in purpose to promote the design excellence of Interior Designers, I am pleased to thank you all for taking the time to join us in celebrating the 18th APIDA Presentation Ceremony and Gala Dinner.

Over the past years HKIDA has established strong relationships with the government, designers, peer organizations, industry partners & stakeholders in promoting interior design excellence and professionalism in Hong Kong China. In the years to come we are committed to further develop the association with 5 identified core tasks which include Education, Research, Promoting Design Excellence, Members Networking and International & PRC Participations. The objective of setting up these core tasks is to further enhance the role of the association and better serve the needs of practitioners, students, industry partners and the general public.

In celebration of the 20th Anniversary of HKIDA next year, we will be launching a series of important events which include conducting a comprehensive 2E industry Survey to collect your final views on the RIDA project and participating in an ambitious global policy initiative by the International Federation of Interior Architects / Designers (IFI) called "Design Futures: Interiors Identity" which comprises regional think tanks culminating in a global conference and the publication of a report repositioning the interiors discipline on the world stage.

On behalf of the whole HKIDA executive committee team, I would like to express our deepest gratitude to all organizations and individuals including each of you that continuously support the association's development.

I also deeply appreciate all the Guests, Participants, Sponsors, International and Local Adjudication Panels who have contributed to make this event an ever successful one.

Congratulations to all Award Winners of APIDA 2010!



## CONTENTS 目录

006	T HOUSE	106	家装项目
010	增值的思考	110	湖景花园 B43 号
014	A CENTURY OF STYLE - TREGUNTER TOWER	114	行·光合作用
018	FROM DEEP DEEP PLACE	118	自然·素
022	雅士花园	122	休闲别墅美式生活
026	RESIDENCE IN JARDIN'S LOOKOUT	126	山水风华
030	LOONG FUNG TERRACE PROJECT	130	HOUSE 168
034	VIVID LIVING	134	SYNCHRONIZATION OF STYLES - TREGUNTER TOWER
038	天鹿湖的午后阳光	138	老杨的家
042	海逸豪园	142	心迹归航
046	延伸	146	丽日玫瑰名城 11 座 1101
050	HOUSE IN NEW TERRITORIES	150	梵高别墅 28 号
054	古典新译	154	折子戏——半山阅江台住宅
058	WONG'S RESIDENCE	158	重力悬浮
062	THE HOME, MID-LEVELS, HONG KONG, CHINA	162	金地国际花园住宅
066	湖景花园 D15 号	166	UNIQUE TOWER
070	水蓝天岸平房	170	影
074	舍右	174	上海澳澜湾建筑师之家
078	加州花园	178	NO. 8 BEL-AIR
082	LUI'S RESIDENCE	182	HILLSBOROUGH COURT
086	CHAN'S RESIDENCE	186	亲和·个性
090	WATER COURTYARD	190	TIMELESS SPACE
094	URBAN PARADISE AT THE PEAK	194	WING ON LODGE
098	RUBLK'S APARTMENT	198	千代田·杨宅
102	万科城 9 座 1903		



- 202 星光华庭
- 206 波托菲诺——私人住宅
- 210 黑白流韵
- 214 碧湖豪庭
- 218 港景峰
- 222 无[界]
- 226 千秋公寓
- 230 郭氏家居
- 234 爱琴海·洪宅
- 238 花园广场·赖公馆
- 242 THE RENAISSANCE HOUSE
- 246 MR. CHEUNG'S HOME
- 250 LIVING IN A PASTURE
- 254 沉香
- 258 翰林西苑
- 262 国贸春天·林宅
- 266 NEOTERIC SPACE FOR 80'S
- 270 汕头宜居华庭复式住宅
- 274 飞鹅山道独立物
- 278 逸意居
- 282 黑白条形码
- 286 PUBLIC HOUSING APARTMENT
- 288 王氏家居
- 292 上东区
- 296 汤臣高尔夫别墅





CHINO CITY, NAGANO, JAPAN / 3517.3m<sup>2</sup>

## T HOUSE

**PROJECT COMPANY:**YOSHIHIRO KATO  
ATELIER CO., LTD.**DESIGNER IN CHARGE:**YOSHIHIRO KATO,  
YOKO KIMURA

The villa facing south has an entrance at the center from which everything expands. The interior space without corner merges with ambient surroundings. In the entry hall, there is abundant light. The living and dining room has an island-like kitchen set in an open way.

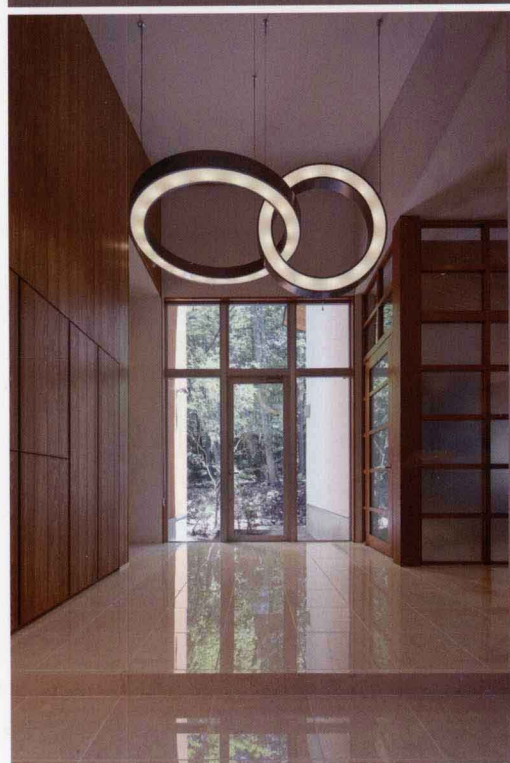
本案朝南，入口在中间位置，以此为中心向四周延展。没有任何棱角的室内空间与室外环境互相融合。入口大厅具有充足的光线。客厅和餐厅处设置一个岛形的开放式厨房。



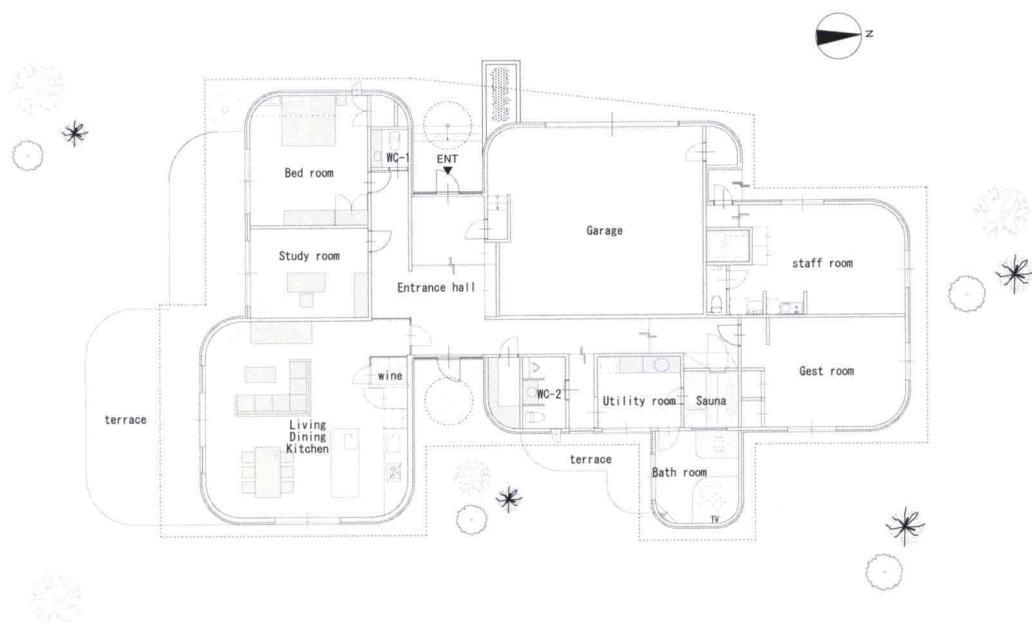














福建省福州市 / 170m<sup>2</sup>

## 增值的思考

PROJECT COMPANY:

简艺东方设计机构

DESIGNER IN CHARGE:

林元娜

DESIGN TEAM:

孙长健

Consulting the enclosed way of courtyard, the project takes the living room as a parvis of the enclosed space and utilizes the original height of 4.3 meters to increase a using area about 40 square meters. Using the expressing approach that introduces the

elements out of the architecture into the space improves the ratio of use and at the same time satisfies the requests of daily use such as aeration, lighting and saving energy.





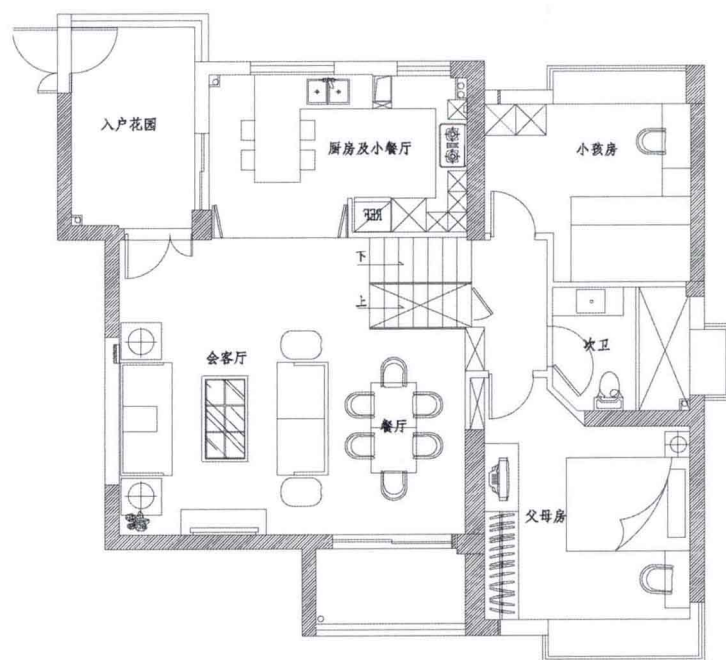






本案设计借鉴了四合院建筑的围合方式，将客厅假想成围合空间中的天井，利用原户型 4.3 米的挑高，增加了近 40 平方米的使用面积。运用将外建筑元素内用的表现手法，在提高使用率的同时，充分满足日常使用的通风、采光和节能要求。







## PROJECT COMPANY:

NOVUS PENETRALIS  
LIMITED

## DESIGNER IN CHARGE:

TENNIEL TSANG

TREGUNTER TOWER, THE PEAK, HONG KONG, CHINA / 306.57m<sup>2</sup>

## A CENTURY OF STYLE – TREGUNTER TOWER

An American neo-classical approach with contemporary accents is adopted to make this apartment luxurious without being vulgar while being different. In addition, the idea of contrasts and symmetrical designs are played with, for example, a minimalistic palette of white, beige and yellow tones versus rooms with sharp

colors, an overall neo-classical contemporary style versus boldly colored furniture, and pure white moldings versus neo-classical mirrored surfaces. As a result, a whole gallery of scenes is created and reflected, giving the apartment dreamy yet comfortable atmosphere.





