

国际新建筑

October 2011 NO.6  
Price: RMB 98 USD 29

INA  
International New Architecture



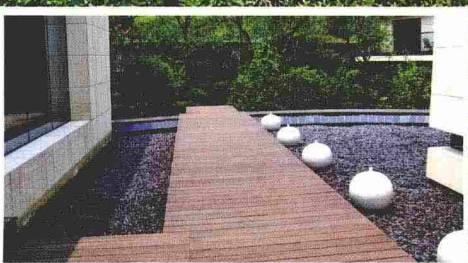
Feature 專題

Details of Residential Building  
住宅建築細部

江苏人民出版社



The Hangzhou Landsea project location is naturally blessed with a beautiful mountain range and a rich cultural background. After visiting the site, the designer was touched by the beautiful scenes, therefore the goal was to retain the organic, natural environment as much as possible, and to design a plan based on the existing topography. Together with the architects, we created an idea that the residential area is nestled in the mountains, managing the differences in elevation carefully in order to provide a natural and peaceful atmosphere for the entire community.



# 杭州詩朗美麗洲

杭州朗倚项目场地本身有着非常好的自然山地资源，和丰富的文化基底。作为我们团队与大自然对话的一次尝试，设计师始终站在洞察者的角度耐心的处理建筑与场地大环境的关系。在青山隐逸，林木峭拔的大背景下的价值，决非仅仅体现在建筑本身的简洁现代的设计语言上，更在于别墅从有限建筑空间向无限自然、无限生活意趣的延伸。



## ■《国际新建筑》 International New Architecture

住宅，是建筑里最为平淡却永不消退、贯穿始终的话题，也是人类文化历史上从古至今不朽的一个篇章。其可大可小，可高可矮，或奢华或温馨，或开朗大方或深沉格调……今天，我们将带上轻松的心情，领略日式的简约与北欧的舒适，将个中之美与精湛的设计探个究竟。这段旅程，我们将欣赏到外观呈不规则五边形的度假别墅、采用乐高木建造的层叠式建筑、由楼梯连通的钢筋混凝土住宅以及由幽深的玻璃走廊引入的原子住宅等等，每一处都将带给您舒适别样的感受。

此外，您还能体验到异域风情的温泉、森林深处别具一格的木网展亭与光影交错的哲学空间……美丽的旅程，期待您的加入。

Residences take a common but permanent role in architecture history. People have been building their residences ever since the appearance of human beings, from small to large, from short to tall, from practical to luxurious, from personal to open... Today, we'll catch the view of various styles, especially brief Japanese and exotic Northern European ways of building residences. The delicacies of the design will be imposed totally along our beautiful easy journey: a VIP house of a holiday home with an irregular pentagon outline in Northern Europe, a stacked building with LEGOs, a stair house with reinforced concrete, an atom house with a deep glass wall corridor etc. Each place will leave you a fabulous but unique impression.

In addition, you can also enjoy the comfort of the foreign thermal baths; visit the wood net pavilion in deep forest; experience the philosophical space interwoven with light and shadow in New York... Delightful tour bus is here for you!

## Details of Residential Building 住宅建築細部

所有人名字按字母顺序排列 Name in alphabetical order

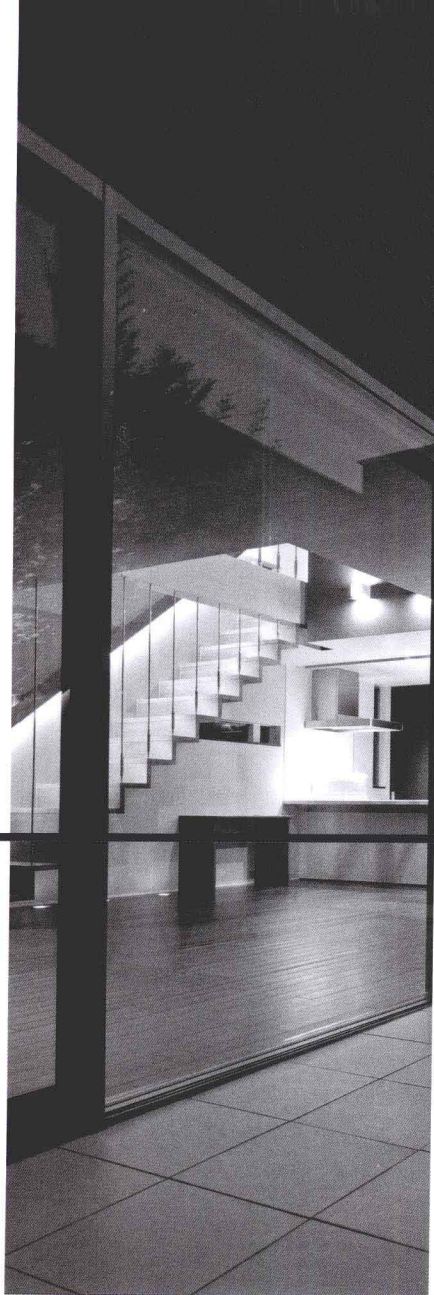
Publisher出版人 Sun Xueliang  
Distributor发行人 Sun Xueliang  
Committee编委 Aart Fransen, Alejandro Villarreal,  
Andreas Quednau, Andrej Gregoric, George Dasic,  
ir, Francine M.J. Houben, Jaime Magén Pardo, Julian  
Weyer, Kyna Leski, Marco Naef, Masahiko Sato, Olaf  
Koeppen, Rita Maerker, Sabine Müller, Sebastian  
Leder, Takaharu Tezuka, Yui Tezuka

Editor-in-Chief执行主编 石莹 Erica  
Marketing Manager市场总监 林佳艺 Rita  
Editor-in-Charge编辑部主任 张晓华 Kitty  
English Editors英文编辑 毛玲玲 Marian 石莹 Cindy  
王培娟 Joan  
Art Editor美术编辑 夏金梅 Candy  
Contributing Editors 特约编辑 Alejandro Villarreal,  
Andreas Quednau, Claudia Horn, Francisco J. Magén  
Pardo, Jack Ryan, Julian Weyer, Kanako Nakayama,  
Machteld Schoep, Marco Naef, Masahiko Sato, Rok  
Oman, Santi Redondo, Satoko Tanazawa, Spela  
Videcnik

Publishing Date出版日期 季刊 Quarterly  
Price Per Issue每期定价 USD 29 RMB 98  
Add:上海市虹口区天宝路886号天宝商务楼3楼  
3rd Floor, NO. 886 Tianbao Road, Hongkou District,  
Shanghai, China  
Post Code: 200086  
Tel: 86-21-65018097-378  
Fax: 86-21-65018097-188  
E-mail: info@internationalnewarchitecture.com  
Website: www.internationalnewarchitecture.com

Media Link媒体支持

X-COLOR new landscape AIA



#### 图书在版编目 (CIP) 数据

国际新建筑. 6 / 凤凰空间·上海编. — 南京: 江苏人民出版社, 2011. 10

ISBN 978-7-214-07559-8

I. ①国… II. ①凤… III. ①建筑设计—作品集—世界—现代 IV. ①TU206

中国版本图书馆CIP数据核字 (2011) 第212652号

#### 国际新建筑6

策划编辑: 石莹 林佳艺

出版: 江苏人民出版社

发行: 天津凤凰空间文化传媒有限公司

集团地址: 凤凰出版传媒集团 (南京湖南路1号A楼)

邮编: 210009

印刷: 上海当纳利印刷有限公司

开本: 1270毫米×965毫米 1/16

印张: 12

字数: 96千字

版次: 2011年10月第1版

印次: 2011年10月第1次印刷

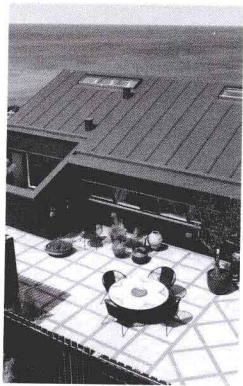
书号: ISBN 978-7-214-07559-8

定价: 98.00元

销售电话: 022-87893668

(本书若有质量问题, 请向发行公司调换)

网址: www.ifengspace.com



## 专题 Feature

004 丹麦度假别墅——贵宾楼  
VIP-House Holiday Home

---

012 东京市郊——一座清幽的私宅  
A Secluded House in the Suburb Tokyo

---

020 舒适阳光小家庭  
T-house — House with a Light Court

---

030 东京松屋单元住宅  
Tokyo Matsuya Unity

---

038 乐高木建筑  
LEGO

---

044 楼梯住宅  
Stair House

---

060 原子住宅  
Atom

---

062 Saitoutei 住宅  
Saitoutei

---

064 REF 住宅  
REF Residence

---

066 圣玛丽亚度假村  
Santa María

---

## 建筑 Architecture

078 景观林地中的塔米纳温泉馆  
New Construction of Tamina Thermal Baths

---

086 台湾高雄卫武营艺术中心  
Wei-Wu-Ying Center for the Arts, Kaohsiung, Taiwan

---

096 艺术文化宫  
House of Arts and Culture

---

102 森林深处的木网展亭  
Woods of Net

---

110 巴特鲍里索夫足球队主场  
Football Stadium FC Bate Borisove

---

118 简约自然风——戈雅幼儿园  
Kindergarten Parque Goya

---

128 光影交错的哲学空间  
NYU Department of Philosophy

---

## 室内 Interior

154 斯而卡餐厅  
Circa Restaurant

---

162 玻璃办公——日本东方汇理  
Glass Office—Calyon Japan

---

172 雪绒花之语——牙科诊所  
Dental Practice "Edelweiss"

---

## 规划 Planning

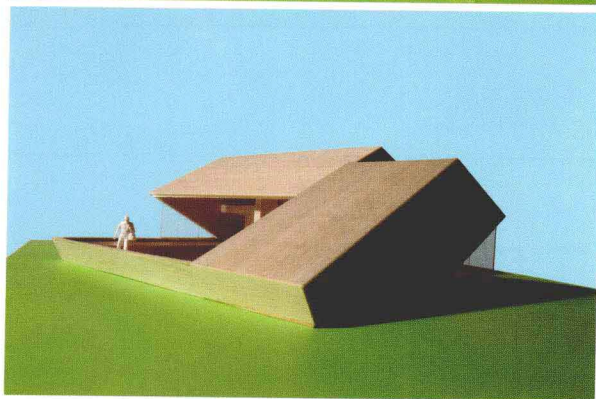
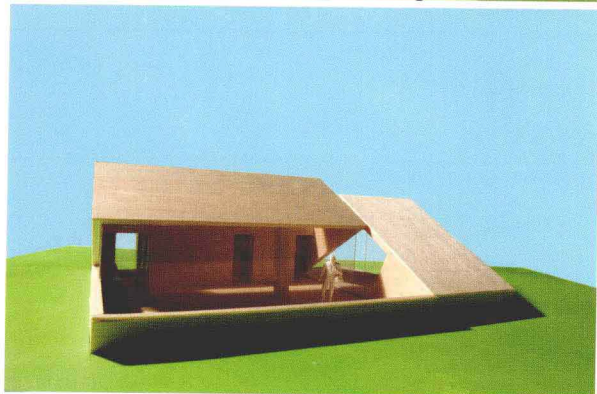
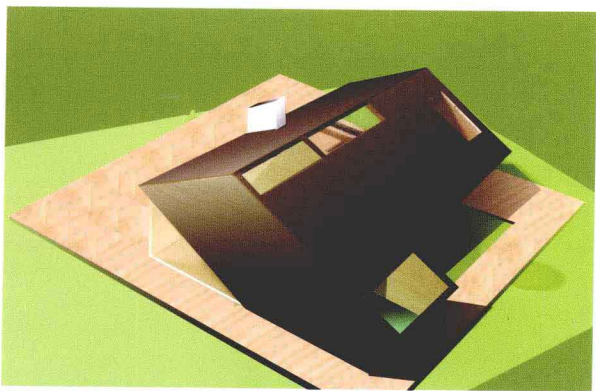
178 沙漠绿洲  
Xeritown, Dubai

---

188 阿雷格里港滨水区规划  
Porto Alegre Waterfront

---



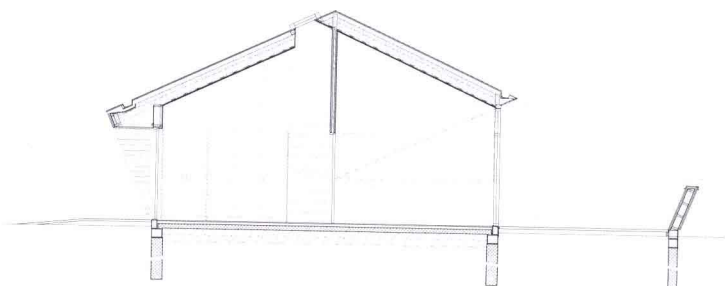
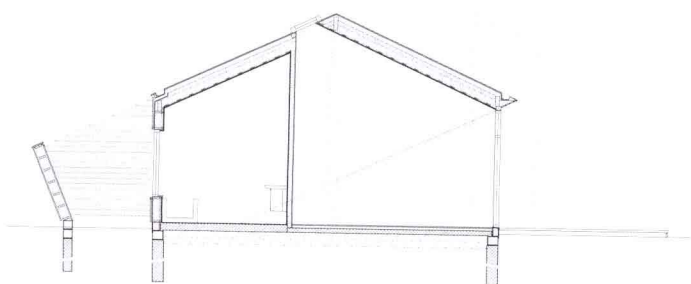


模型图  
Models



身处蓝天大海之间，贵宾楼给度假的人们提供了一处温馨的港湾  
The VIP-House provides a comfortable home for tourists

剖面图 Sections







# VIP-House Holiday Home

## 丹麦度假别墅——贵宾楼

| C. F. Møller Architects |





简单的线条，变换的材料与材料切割构成了这个建筑外形轻便、简洁与结构紧凑的特点  
The tight architecture is characterized by simple lines, with material changes and incisions

贵宾楼的外形设计灵感来源于简单的几何图形，如五边形等。简单的线条，变换的材料与材料切割构成了这个建筑外形轻便、简洁与结构紧凑的特点。

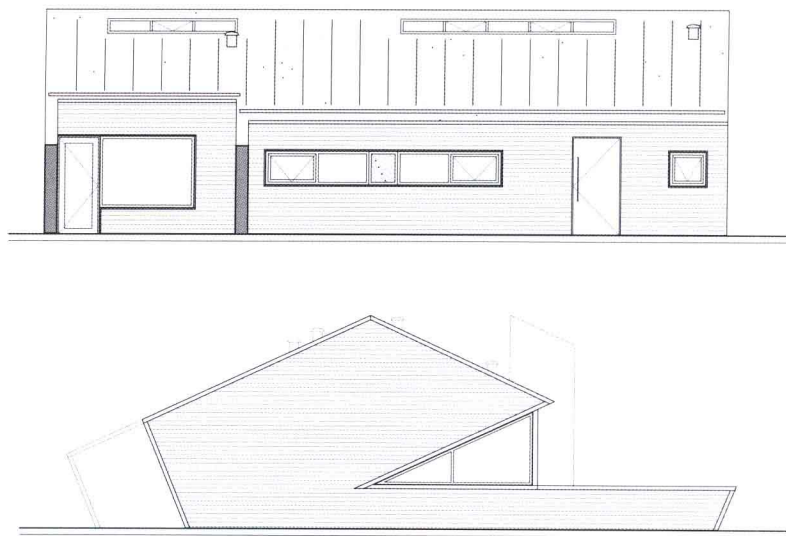
设计的目标一直是追求室内外的完美衔接与融合。该度假别墅功能性全面，拥有现代家庭所需的完备设施。它拥有三种变幻的形式，但是基本的理念是一致的：围绕长条形的中央起居室，周边分布着各式各样的卧室。入口可通往客厅或一个大型屋顶平台。客厅和屋顶平台都能通往宽敞的双层起居室，这个起居室墙壁由大型玻璃板构成，使得周边的景致看似一幅活灵活现的油画。

贵宾楼的基本构成还包括两个卧室与一个卫浴间。由于天花板较高，设计师就在中间设计了开放式夹层，这样能多加8个卧室。两个大型的贵宾楼提供了更多的房间与设施。其中一个占地110平方米，设计了四个卧室与一个屋顶平台；另一个占地140平方米，多加了一个屋顶平台，一个卫浴间与一个大型起居室。

盥洗室 Bathroom







立面图 Elevations

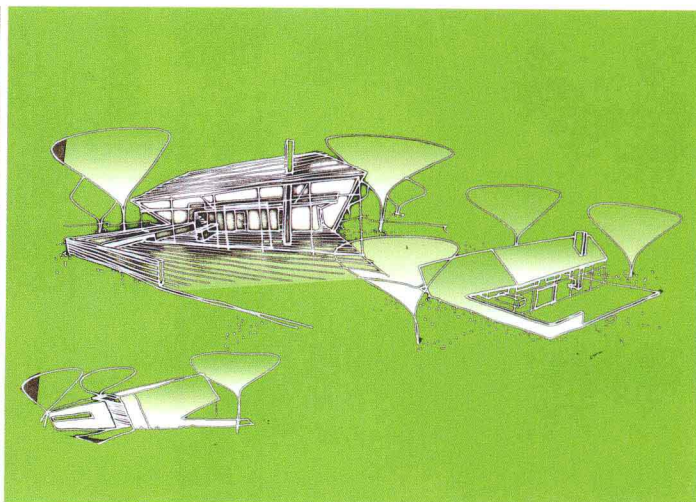


房间的墙壁由大型玻璃板构成，使游客视野开阔，可以尽享周围的景致  
The facade consists of large glazed panels that make the surroundings appear as a living painting

开放的夹层  
The open mezzanine



草图 Sketch





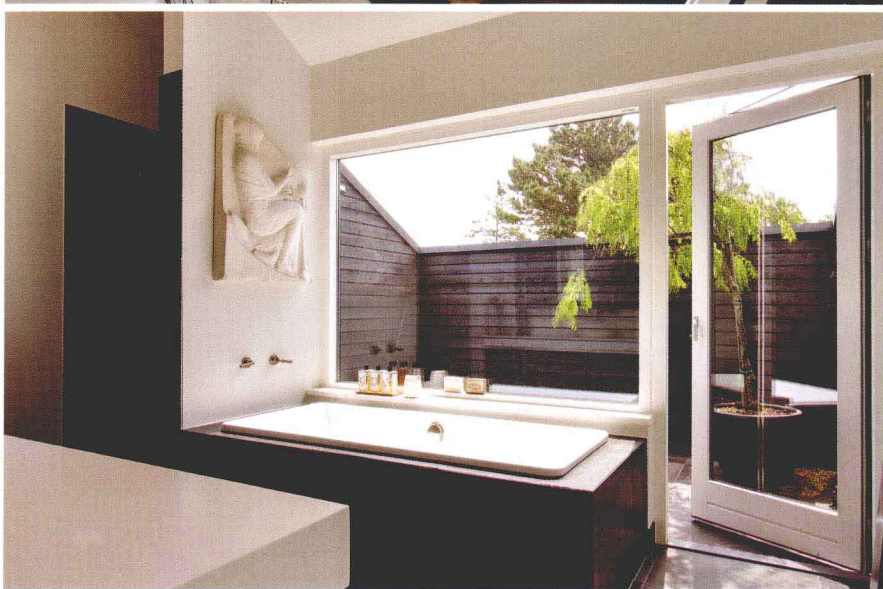




Basic geometric shapes such as the pentagon provided part of the inspiration for VIP House, which is a long way from the classic holiday home. The tight architecture is characterised by simple lines, with material changes and incisions which help to give the building lightness and character.

The aim has been to blur the boundaries between inside and out, and the functional holiday home offers space for all the modern family needs. VIP House comes in three variations, where the basic idea is the same: an elongated central living room zone, supplemented by a varying number of bedrooms. The entrance to the VIP House is either through the hall or the large terrace. They both lead directly into the spacious double-height living room, where the facade consists of large glazed panels that make the surroundings appear as a living painting.

The basic volume also contains two bedrooms and a bathroom, and the ceiling height allows for an open mezzanine with up to eight extra beds. The two larger versions of VIP House provide further rooms and facilities: The 110 m<sup>2</sup> type provides four bedrooms plus an extra terrace, while the VIP 140 m<sup>2</sup> type has an additional terrace, bathroom and a larger living room.

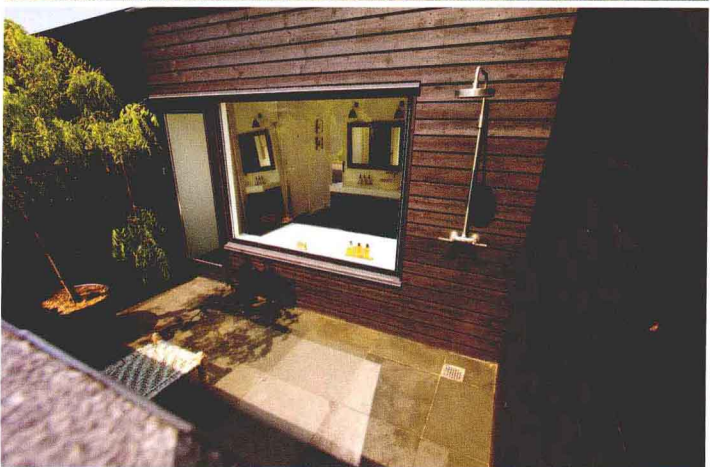






露台上提供了供客人休息的设施

The sofa on the terrace for tourists' rest and relax



#### Credits

Location: Vejby Strand + various, Denmark

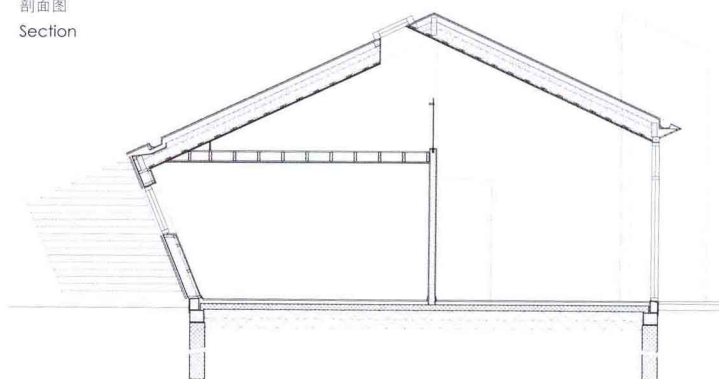
Area: 80-140 m<sup>2</sup>

Year: 2008-2010

Architect: C. F. Møller Architects

剖面图

Section

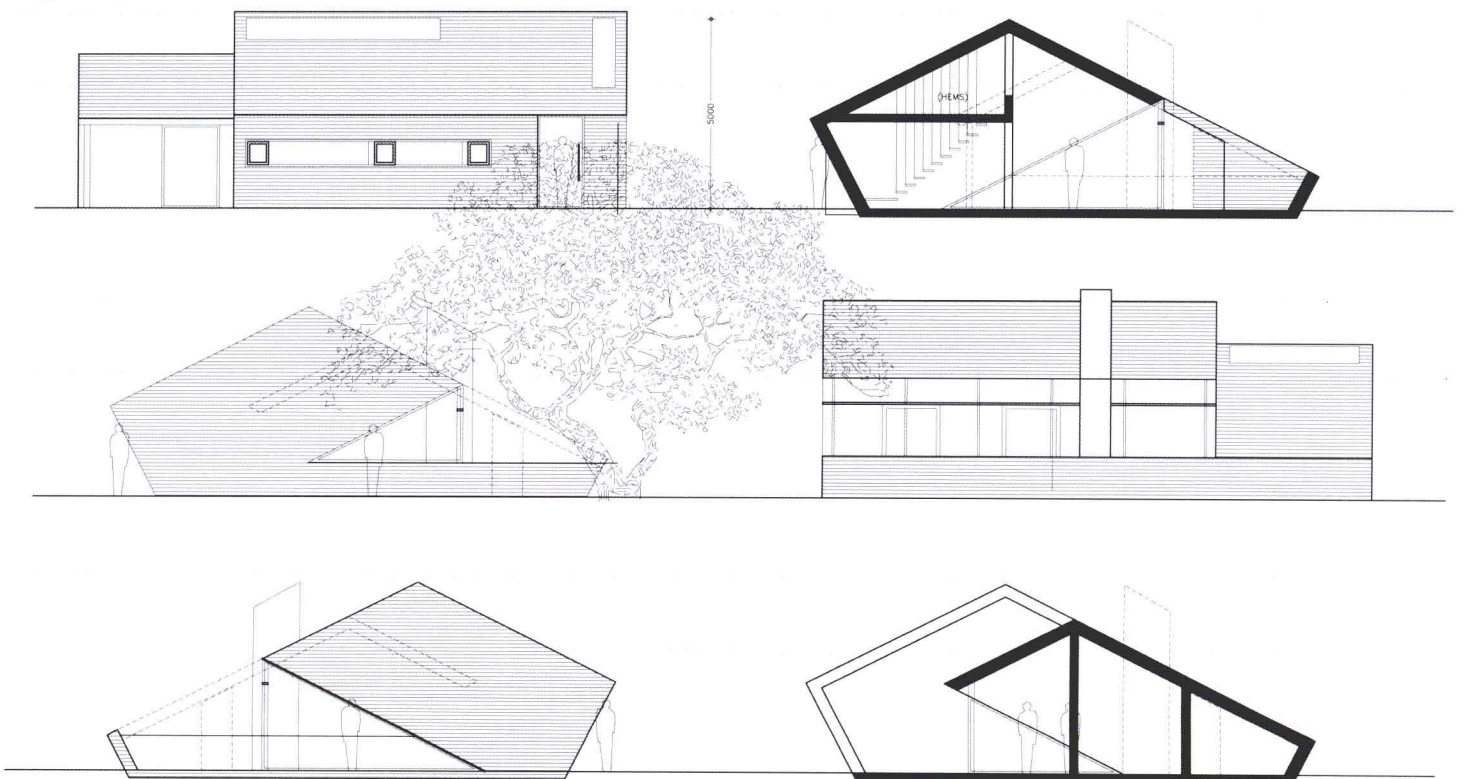






黑色的房屋与白色的地面，形成鲜明对比，简洁而亮丽  
The black house presenting an obvious contrast against the white floor, makes the whole simple and bright

设计理念展示图  
Design concept







南面视角

Looking from the south (Photographer: Takumi Ota)



左图：西南视角

Left: Looking from the south-west (Photographer: Takumi Ota)

右图：西面视角

Right: Looking from the west (Photographer: Takumi Ota)





东面视角

Looking from the east (Photographer: Takumi Ota)

# A Secluded 东京市郊一座清幽的私宅

Shigeru Kuwahara Architects | House in the Suburb Tokyo





地下室

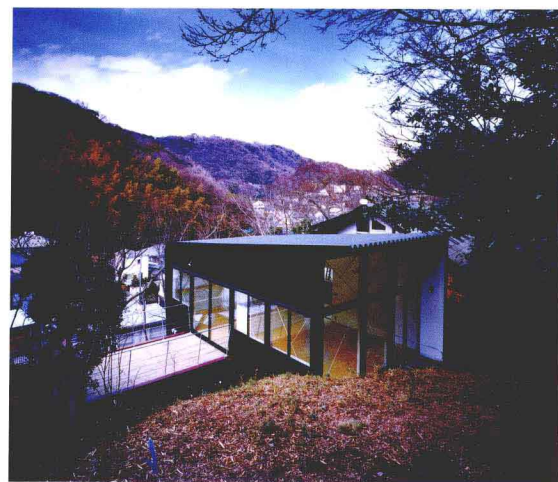
Basement atelier space (Photographer: Takumi Ota)



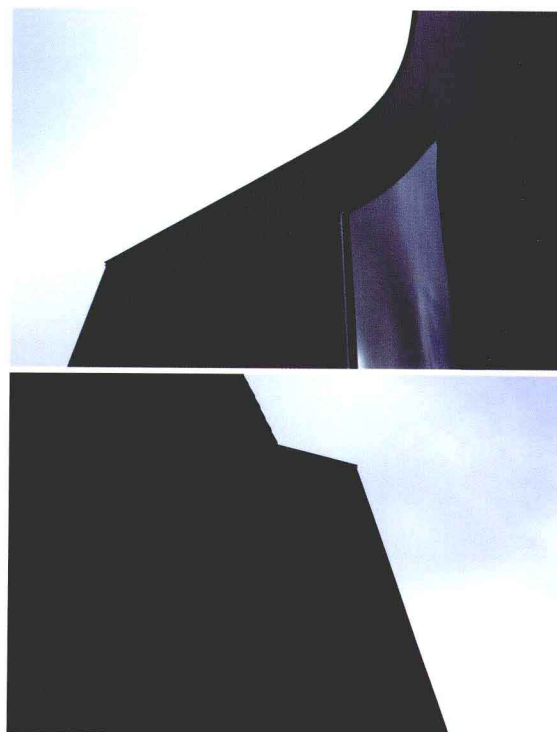




一楼。LDK空间  
1st Floor, LDK space (Photographer: Takumi Ota)



另一私宅项目  
Another private house project (Photographer: Kimikazu Tomisawa)



局部外观  
Exterior detail (Photographer: Takumi Ota)

这是一座私人住宅，宅内居住着一对夫妇和他们的宠物狗，这座私宅位于距离日本东京市中心30分钟车程的一个典型的卫星小镇内。一直都在迅速扩张城市范围的东京，早在20年前就将这个卫星小镇纳入了它的管辖范围。虽然成为了东京的一部分，但是，它依然保留着一片树木林区。这片林区位于这个小镇的城市化边缘地带一个小山丘的南坡上，那里环境清幽，阳光充足，就像一个自然绿色公园。然而，这一地区的地形不佳，呈现出形状不一的梯形地势。

因而，在此地建造一座住宅，首先应当摆脱这一选址的地形困扰。于是，我们开始从这一选址的中心位置入手，寻