

原汁原味同质同步美国幼儿园课程

# 美国幼儿园课本

【美】迈克尔·A.帕特莱克  
Michael A. Putlack

【韩】英创文化  
e-Creative Contents / 著 | 李小贝 / 译

# American School Text Book Reading Key

PreK

阶段

1

## 同步练习册 答案与解析

原汁原味同质同步美国幼儿园课程

# 美国幼儿园课本

【美】迈克尔·A.帕特莱克  
Michael A. Putlack

【韩】英创文化  
e-Creative Contents / 著

李小贝 / 译

American  
School  
Text Book  
Reading Key

961

2179.1

同步练习册 | 答案与解析

PreK

阶段

1

北方妇女儿童出版社

长春



# Workbook

## A Match and write.



1. It is cloudy. *It is cloudy.*

2. It is sunny. *It is sunny.*



3. It is rainy. *It is rainy.*

4. It is snowy. *It is snowy.*



## B Read and answer.

1.



How's the weather today?

It is \_\_\_\_\_.

2.



How's the weather today?

It is \_\_\_\_\_.

3.



How's the weather today?

It is \_\_\_\_\_.

4.



How's the weather today?

It is \_\_\_\_\_.

cold and snowy

hot and sunny

snowing

raining

**C** Circle the correct words.



There are four  
[ seasons / weather ].



Spring is [ warm / cold ].



Fall is [ cool / hot ].



[ Summer / Winter ] is  
hot and sunny.

**D** Choose and write.

grow

change

fall

leaves

1. Trees \_\_\_\_\_ with each season.
2. Trees \_\_\_\_\_ new leaves in spring.
3. Leaves change color and \_\_\_\_\_ from trees in fall.
4. Many trees have no \_\_\_\_\_ in winter.

## A Match and write.

1. This is a mountain.

*This is a mountain.*

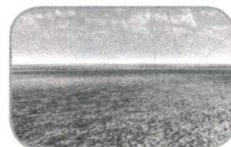
2. This is a hill.

*This is a hill.*

3. This is a valley.

*This is a valley.*

4. This is a plain.

*This is a plain.*

## B Read and answer.

1. Is a mountain high?

Yes, a mountain is very \_\_\_\_\_ land.

2. Is a hill lower than a mountain?

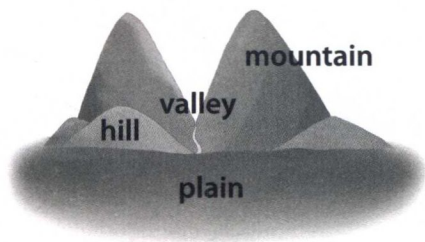
Yes, a hill is \_\_\_\_\_ than a mountain.

3. Is a valley flat?

No, a valley is \_\_\_\_\_ land.

4. Is a plain narrow?

No, a plain is \_\_\_\_\_ land.



narrow

flat

high

lower

**C** Circle the correct words.

1. There are different kinds of [ water / waters ].



2. Ocean water is [ salty / salt ].



3. Plains are good for [ farming / swimming ].



4. A [ valley / hill ] is between mountains.



**D** Choose and write.

long

large

flows

surrounded

1. An ocean is a very \_\_\_\_\_ body of water.

2. A river is a \_\_\_\_\_ body of water.

3. A river \_\_\_\_\_ into an ocean.

4. A lake is \_\_\_\_\_ by land.

# A Match and write.

1. I am a teacher.

*I am a teacher.*

2. I am a doctor.

*I am a doctor.*

3. I am a police officer.

*I am a police officer.*

4. I am a firefighter.

*I am a firefighter.*



# B Read and answer.

1.



What do you do?

I am a \_\_\_\_\_.

2.



What do they do?

They are \_\_\_\_\_.

3.



What does she do?

She is a \_\_\_\_\_.

4.



What does he do?

He is a \_\_\_\_\_.

waiter

farmer

cooks

baker

**C** Circle the correct words.

1. They are farmers.  
Farmers [ grow / cook ] food.



2. They are firefighters.  
Firefighters [ put out / work for ] fires.



3. They are police officers.  
Police officers [ put out / protect ] people.



4. They are waiters.  
Waiters [ serve / bake ] food.



**D** Choose and write.

hospitals

schools

bakeries

restaurants

1. Teachers teach students. They work in \_\_\_\_\_.
2. Doctors help sick people. They work in \_\_\_\_\_.
3. Cooks cook food. They work in \_\_\_\_\_.
4. Bakers bake bread. They work in \_\_\_\_\_.

## A Match and write.

1. He is in a car.

*He is in a car.*

2. She is on a bus.

*She is on a bus.*

3. They are on a subway.

*They are on a subway.*

4. They are on a train.

*They are on a train.*



## B Read and answer.

1.



How do you go to school?

I usually \_\_\_\_\_ to school.

2.



How do you go to school?

I usually \_\_\_\_\_ to school.

3.



How does your father go to work?

He \_\_\_\_\_ to work.

4.



How does your mother go to work?

She \_\_\_\_\_ to work.

walk

drives his car

take the bus

rides her bicycle

**C** Circle the correct words.

1. Airplanes move in the [ air / water ].



2. [ Helicopters / Ships ] move in the air.



3. Ships move on the [ water / air ].



4. [ Cars / Ferries ] move on the water.



**D** Choose and write.

takes      rides      drives      walks

1. My father usually \_\_\_\_\_ the subway to work.

2. He sometimes \_\_\_\_\_ his car.

3. My mother usually \_\_\_\_\_ her bicycle to work.

4. She sometimes \_\_\_\_\_ to work.

A

Match and write.

1. It is a leaf.

*It is a leaf.*

2. It is a stem.

*It is a stem.*

3. It is a root.

*It is a root.*

4. It is a flower.

*It is a flower.*

5. It is a seed.

*It is a seed.*

B

Read and answer.

1.



Where do plants live?

Some plants live in the \_\_\_\_\_.

2.



Where do plants live?

Some plants live in the \_\_\_\_\_.

3.



Where do plants live?

Some plants live in the \_\_\_\_\_.

desert

jungle

ocean

**C** Circle the correct words.

1. They are roots.  
Some roots are [ thick / thin ].



2. They are roots.  
Some roots are [ thick / thin ].



3. They are leaves.  
Some leaves are [ big / little ].



4. They are leaves.  
Some leaves are [ big / little ].



**D** Choose and write.

leaves

parts

seeds

ocean

1. Plants have different \_\_\_\_\_.
2. Plants have roots, stems, and \_\_\_\_\_.
3. Many plants have flowers and \_\_\_\_\_, too.
4. Plants can live in the forest, jungle, desert, and \_\_\_\_\_.

**A** Match and write.

1. It is a giraffe.

*It is a giraffe.*

2. It is a polar bear.

*It is a polar bear.*

3. It is a snake.

*It is a snake.*

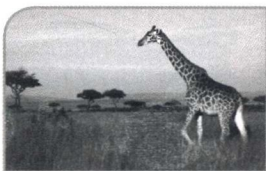
4. It is a frog.

*It is a frog.*

5. It is a dolphin.

*It is a dolphin.***B** Read and answer.

1.



Where do giraffes live?

Giraffes live in \_\_\_\_\_.

2.



Where do polar bears live?

Polar bears live in very \_\_\_\_\_.

3.



Where do dolphins live?

Dolphins live in the \_\_\_\_\_.

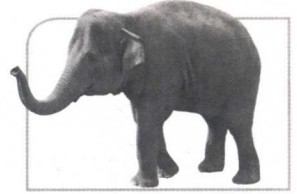
oceans

cold places

grasslands

**C** Circle the correct words.

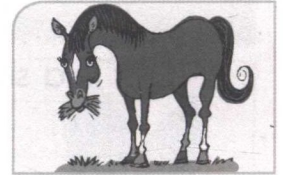
1. Some animals are [ tiny / huge ].



2. Some animals are [ tiny / huge ].



3. Some animals eat [ plants / other animals ].



4. Some animals eat [ plants / other animals ].



**D** Choose and write.

places

food

water

air

1. Animals need \_\_\_\_\_ to live.



2. Animals need \_\_\_\_\_ to live.



3. Animals need \_\_\_\_\_ to live.



4. Animals need \_\_\_\_\_ to live, too.



**A** Match and write.

1. It is an ant.

*It is an ant.*

2. It is a bee.

*It is a bee.*

3. It is a grasshopper.

*It is a grasshopper.*

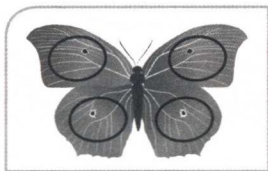
4. It is a butterfly.

*It is a butterfly.*

5. It is a beetle.

*It is a beetle.***B** Read and answer.

1.



What are these?

They are \_\_\_\_\_.

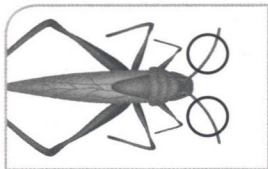
2.



What are these?

They are \_\_\_\_\_.

3.



What are these?

They are \_\_\_\_\_.

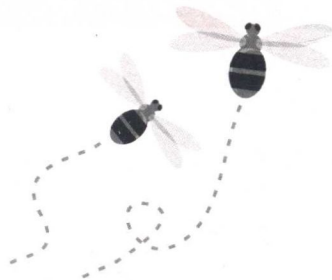
antennas

wings

legs

**C** Circle the correct words.

1. Some insects have wings.  
So they [ can / can't ] fly.



2. Some insects have no wings.  
So they [ can / can't ] fly.



3. Butterflies have [ four / six ] wings.



4. All insects have [ four / six ] legs.



**D** Choose and write.

antennas

animal

nests

hives

1. An insect is an \_\_\_\_\_.
2. Insects have two \_\_\_\_\_.
3. Ants live in \_\_\_\_\_.
4. Bees live in \_\_\_\_\_.