

图说世界茶文化

〔下册〕

姚国坤 主编

中国国际茶文化研究会文库

16

中国文史出版社

图说世界茶文化

Illustration of The international tea culture

【下册】



常州大学图书馆
藏书章

姚国坤 主编

中国国际茶文化研究会编
中国文史出版社

图书在版编目(CIP)数据

图说世界茶文化：全2册 / 姚国坤主编. —北京：
中国文史出版社, 2012.10

ISBN 978-7-5034-3584-3

I. ①图… II. ①姚… III. ①茶—文化—世界 IV.

① TS971

中国版本图书馆CIP数据核字 (2012) 第246929号

责任编辑：王文运

装帧设计：陈岩炉

特约编辑：毛应民

英文翻译：(美) 高涵

出版发行：中国文史出版社

社 址：北京市西城区太平桥大街23号 邮编：100811

策划机构： 文澜书业wenlanshuye@126.com

印 装：杭州武林印刷有限公司

经 销：全国新华书店

开 本：210mm×285mm 1/16

印 张：35

字 数：300千字

版 次：2012年11月北京第1版

印 次：2012年11月第1次印刷

定 价：498.00元（精装）

茶之器具篇

茶器具通常是指人们在饮茶过程中所使用的各种器具。世界各国，由于饮茶方法不一，地域风情有别，民族文化各异，因此饮茶器具也是各不相同的。但尽管如此，世界各国的饮茶器具的品类却是基本一致的，并有着一些共同的品性。

Chapter 4 Tea Equipage

Tea equipage refers to the many tools and accessories used in the process of making tea. With the many different ways of preparing tea, cultures, and customs, tea equipage encompasses a vast range of styles and materials. However, they can be grouped into basic categories.



中国茶艺中的器具 / Common tea equipage used to steep tea Chinese-style

(一) 茶具概述

Overview of Tea Equipage

翻开世界饮茶历史，自古至今，出现过许多茶具，贵的如金、银、玉制成的茶具，廉的如竹、木、石制的茶具，品类繁多，异彩纷呈。在这众多的茶具中，如果将其归纳分类，一般可分为金属茶具、瓷器茶具、紫砂茶具、竹木茶具、玻璃茶具、脱胎漆茶具等。此外，还有一些零星的茶具品种，但不成为类。

现将一些在世界各地流行广，饮用多，又在茶具发展史上占有重要地位的代表性茶具，分类简介如下。

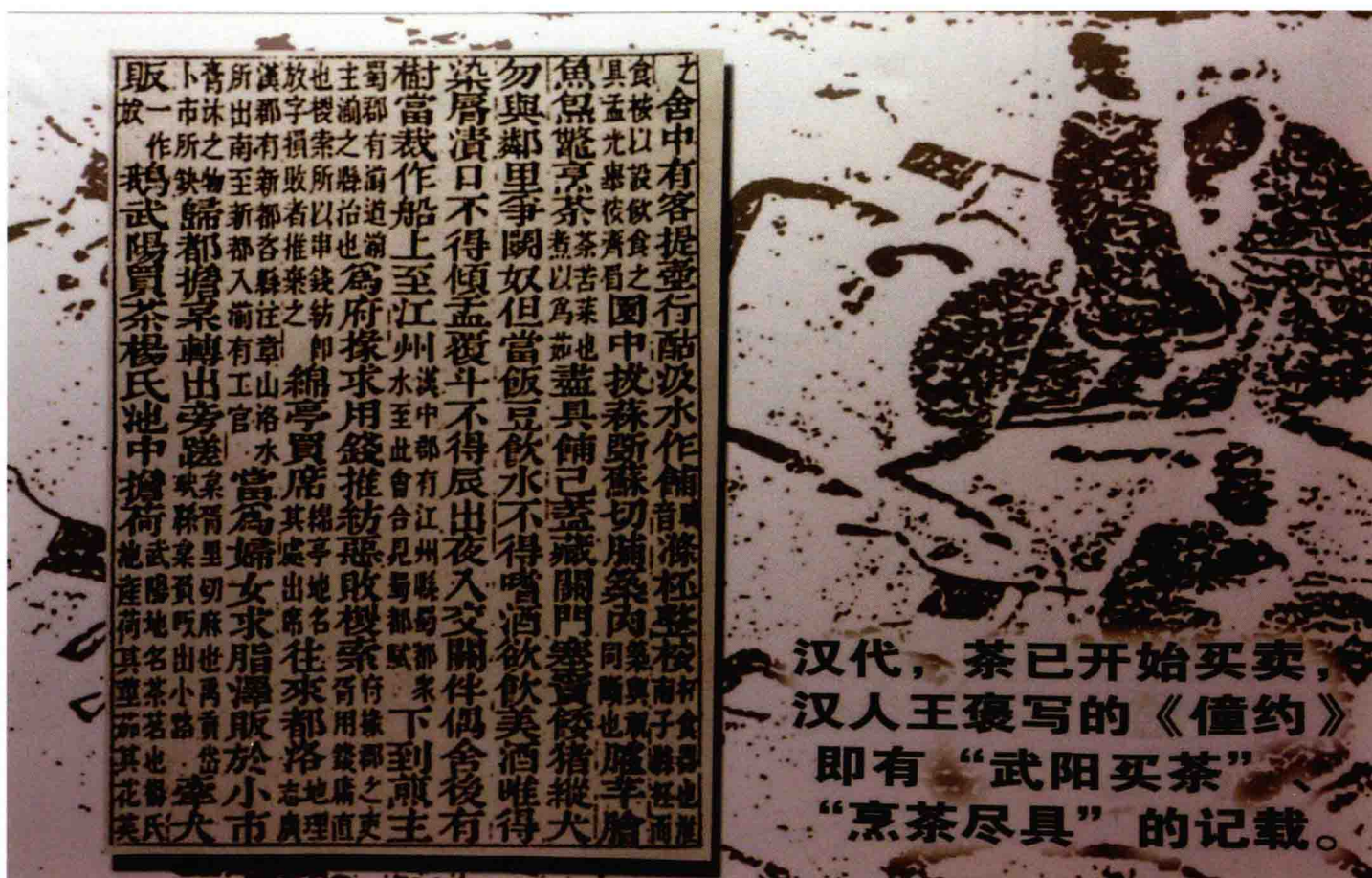
Over the thousands of years that tea spans across, numerous types of tea accessories have evolved, some made of valuable materials, such as gold, silver, and jade; others made from more common materials like bamboo, wood, and stone. The varieties are countless, but they can be categorized into metal, porcelain, clay, wood, glass, and bodiless lacquer ware. Besides these, there are miscellaneous types that are not full categories.



古代仕女饮茶图 / Picture of a young Chinese woman drinking tea in ancient times



在中国余姚河姆渡出土的 6500 年前的古陶壶 /A 6,500 year old teapot unearthed at the Hemudu ruins in Yuyao, China



最早提及茶具的是中国西汉王褒《僮约》/The earliest mention of tea accessories was in Wang Bao's Servant Contract, from the Western Han dynasty

1、金属茶具

Metal Tea Accessories



20 世纪初的中国贮茶锡罐 /Tea tin from the early twentieth century, China

金具茶具是指由金、银、铜、铁、锡等金属物质加工而成的饮茶器具。这是最古老的日用器具之一。最早，先人们用青铜器制作盘、匜盛水，制作爵、尊盛酒，这些青铜器皿自然也可用来盛茶。最迟从公元 9 世纪开始，茶具已从酒具、盛具中分化出来，并形成完备的系

Metal tea accessories include gold, silver, copper, iron, tin, and other types of metal. One of the oldest materials used to make tools, it was first used to make bronze vessels for washing one's hands and three-legged and flat drinking vessels. By the 9th century, tea utensils were already separate



20 世纪初的中国茶馆烧水壶 /Tea kettle from the early twentieth century, China

中国长嘴茶壶 / Chinese tea kettle with a long spout



铜质泡茶壶 / Silver tea kettle

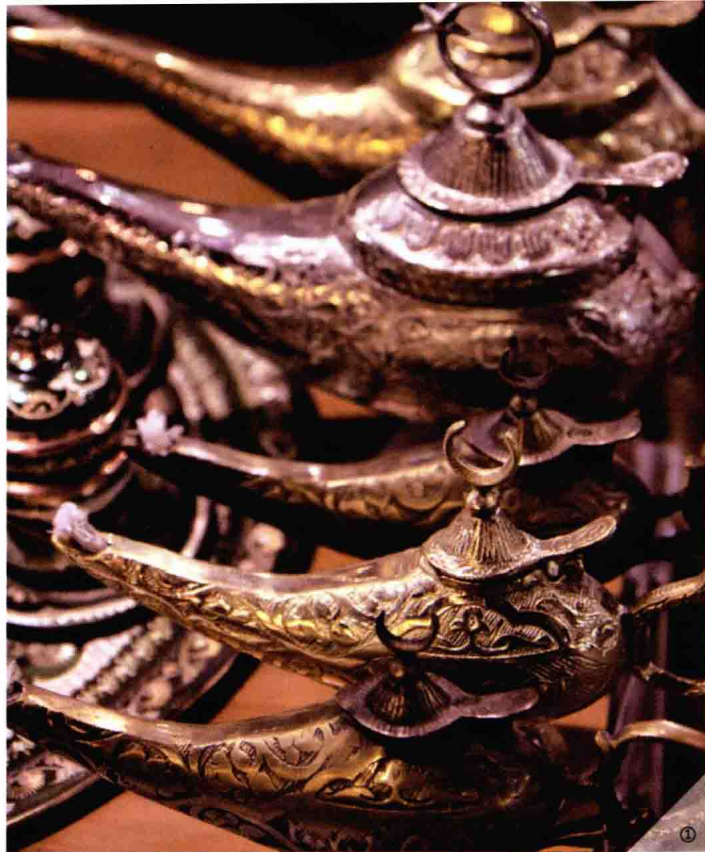


阿拉伯人的金属茶水壶 / Arabic metal tea kettle



马来西亚锡茶盘 / Malaysian tin tea tray





①土耳其的黄铜茶壶 /Turkish brass teapot

②韩国的古代铜茶壶 /Ancient Korean copper teapot

③约旦的金属茶具 /Yemeni tea accessories

④日本的铁茶壶 //Japanese iron teapot



鎏金银盐台 / Gold and silver salt stand

列化成套茶具。其时，在中国饮茶成风，金属茶具名噪一时，成为显贵的一种象征。20世纪80年代中期，陕西扶风法门寺出土的一套由唐僖宗供奉的鎏金茶具，可谓是金属茶具中罕见的稀世珍宝。特别是鎏金壶门座茶

from utensils for wine or other containers. At the time tea was highly sought-after and expensive, which meant that tea utensils were, too. In the 1980s, at Famen temple in Fufeng county, Shaanxi province, a gold tea set believed to have been a gift by Tang emperor Xizong was excavated. It is



鎏金茶碾子 / Gold roller



鎏金茶罗子 / Gold sieve

碾子和鎏金仙人驾鹤纹壶门座茶罗子，更为珍贵。前者实为碾槽，槽体上有金制的鸿雁，作展翅飞翔状。碾轮用银制作，上饰金团花，给人以富态优美之感。后者为了一件鎏金方匣，上层是茶罗，罗底有抽屉、壶门座。鎏金制成的飞天，身段秀美，神态动人，充分反映了中国

made up of several pieces, including an elongated tea grinder decorated with vivid etchings of wild geese, which was used to grind compressed tea, paired with a wheel made of silver, decorated with flowers. The set also includes a box used for filtering out the ground tea from larger bits that will undergo further grinding. It is decorated with etchings of gods riding



鎏金银匙 / Gold and silver spoon



鎏金长柄勺 / Long-handled gold spoon



银火筋 / Silver fire tongs

唐代制作金银茶具的卓越技巧。但民间用的金属茶具多由铜、铁等制作而成，大约从公元 10 世纪的中国宋代开始，古人对用金属茶具饮茶的性能开始褒贬不一。到公元 13 世纪中国元代以后，特别是从公元 14 世纪中国明代开始，随着茶类的创新，饮茶方法的改变，

cranes, made from a gold amalgam.

It shows the metalwork skills already acquired in the Tang Dynasty. While the upper class used silver or gold utensils, most people used copper and iron at the time.

Starting in the 10th century, during the Song dynasty, many people



金银丝笼子 / Gold and silver container

以及陶瓷茶具的兴起，使金属茶具逐渐失去昔日光辉。如今，用金属制成贮茶器具，如锡瓶、锡罐等，在世界饮茶国中，仍屡见不鲜。这是因为金属贮茶器具的密闭性要比纸、竹、木、瓷、陶等好，具有较好的防潮、避光性能，这样更有利于散茶的保藏。另外，由于金属茶具的庄

started having divergent opinions of the efficacy of metal in preparing tea. After the 13th century, and especially with the start of the Ming dynasty in the 14th century, following the creation of new types of tea and new steeping methods, the use of porcelain became more wide-spread. The use of metallic tea accessories gradually faded away, although metallic tea storage canisters are still in use today, due to their ability to keep out light and moisture better



鎏金小银碟 / Small gold and silver plate



鎏金银龟盒 / Gold and silver turtle box

重与典雅，用金属制成的烧水、泡茶器具，以及作为盛水、盛奶、盛糖的器具，在有饮奶茶风习的一些欧洲、大洋洲饮茶国家，以及阿拉伯国家各国，至今仍流行于世。

than other materials such as cardboard, bamboo, wood, ceramics, etc. Metallic tea utensils, especially tea kettles, tea pots, milk pitchers and sugar bowls, owing to a more dignified and elegant appearance, are still in use in European, Oceanic, and Arabic tea sets.

2、瓷器茶具

Porcelain Tea Accessories

瓷器茶具，在世界饮茶国中，是饮用最为普遍、使用最为频繁、适用茶类最为广泛的一类茶具。

瓷器茶具出现于陶器茶具之后，大约始于公元 2 世纪晚期。公元 9 世纪开始，瓷器茶具开始成为各国饮茶器具的主流品种，也是当时最具代表性的种类。

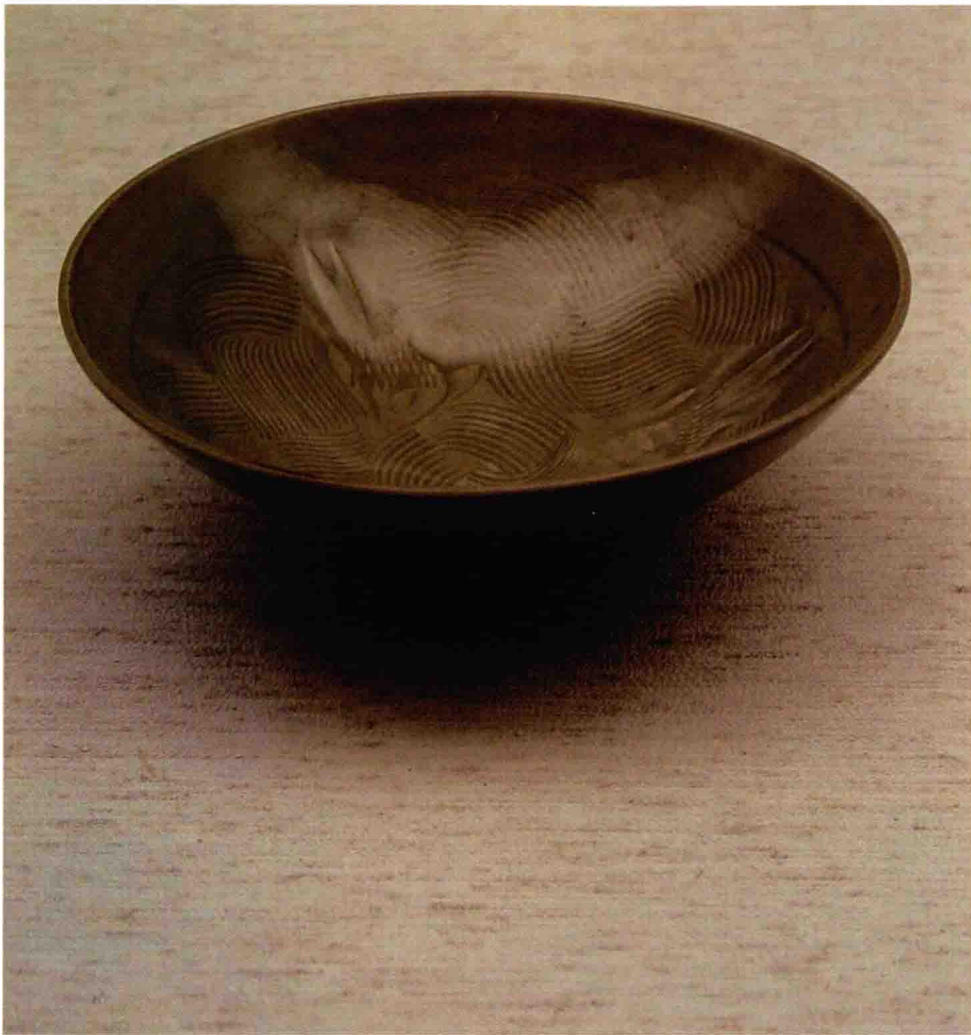
Porcelain tea equipage is by far the most prevalent type of tea equipage in the world.

Porcelain came about after the invention of pottery, approximately at the end of the second century. By the ninth century, porcelain tea accessories were a mainstream product in many countries.

6000 年前中国马家滨文化中出土饮器

/Six thousand year old drinking utensils excavated at the Majiabing site in China.





北宋青瓷茶碗 / China tea bowl from the Northern Song Dynasty

在世界范围内，瓷器茶具的品种很多，与饮茶相关的主要品种有：青瓷茶具、白瓷茶具、黑瓷茶具和彩瓷茶具。这些茶具在世界饮茶史上都曾有过辉煌的一页。瓷器茶具主要是从中国唐代中期（公元9世纪初）开始，逐渐流向海外，至公元14—20世纪时，从中国流向欧美以及东亚各饮茶国的瓷器茶具，名声远扬，成了各国饮茶器具的首选。

There are many types of porcelain, but of the porcelain related to tea, there are: celadon, white porcelain, black porcelain, and faience, or colored porcelain. These types have all occupied their own glorious place in history. As stated above, porcelain was developed in the ninth century and gradually was introduced to cultures abroad, eventually becoming one of the most sought-after types of tea utensils in the world.