

# 情调照明系列丛书 Sentimental Lighting Series

主编：吴育林 副主编：李海锋 徐清涛

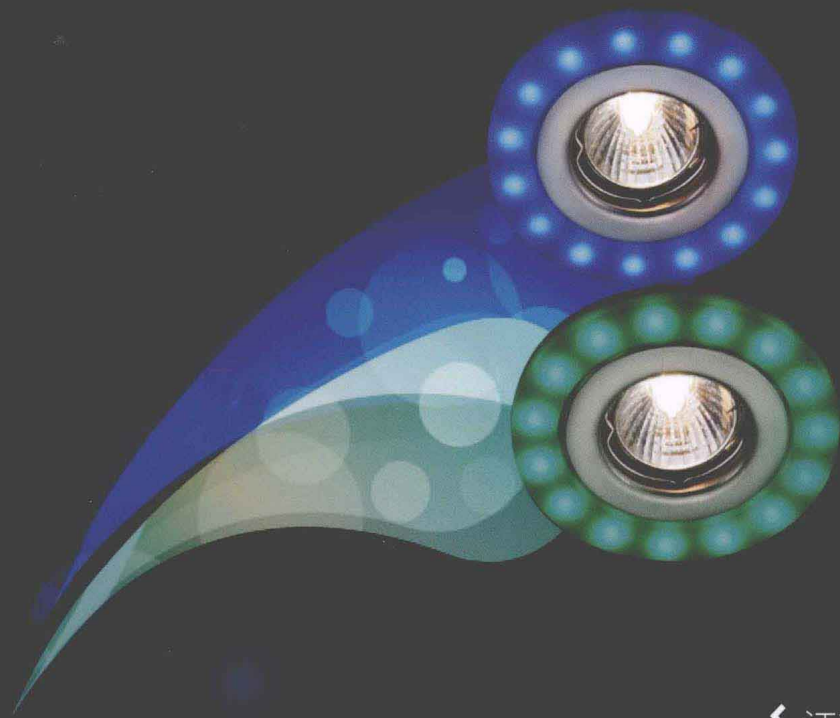
Editor-in-Chief : Wu Yulin Associate Editors-in-Chief : Li Haifeng, Xu Qingtao



## 情调照明 *Sentimental Lighting*

徐清涛 顾宇清 肖娜 陈兴波 编著

Editors : Xu Qingtao , Gu Yuqing , Xiao Na, Chen Xingbo



江苏科学技术出版社

情调照明系列丛书

Sentimental Lighting Series

主编：吴育林 副主编：李海锋 徐清涛

Editor-in-Chief : Wu Yulin Associate Editors-in-Chief : Li Haifeng, Xu Qingtao

情调照明

徐清涛 顾宇清 肖娜 陈兴波 编著

Editors : Xu Qingtao, Gu Yuqing, Xiao Na, Chen Xingbo

Sentimental Lighting

图书在版编目(CIP)数据

情调照明 / 徐清涛等编著. — 南京 : 江苏科学技术出版社, 2011.11 (2012.2重印)  
ISBN 978-7-5345-8752-8

I. ①情… II. ①徐… III. ①照明设计—研究 IV.  
①TU113.6

中国版本图书馆CIP数据核字(2011)第228355号

---

## 情调照明

---

编 著 徐清涛 顾宇清 肖 娜 陈兴波  
责任编辑 樊 明 葛 昀  
策划编辑 张远文  
责任校对 郝慧华  
责任监制 曹叶平 周雅婷

出版发行 凤凰出版传媒集团  
凤凰出版传媒股份有限公司  
江苏科学技术出版社  
集团地址 南京市湖南路1号A楼, 邮编: 210009  
集团网址 <http://www.ppm.cn>  
出版社地址 南京市湖南路1号A楼, 邮编: 210009  
出版社网址 <http://www.pspress.cn>  
经 销 凤凰出版传媒股份有限公司  
印 刷 佛山市华彩印刷有限公司

开 本 787mm×1092mm 1/16  
印 张 6.75  
版 次 2011年11月第1版  
印 次 2012年2月第2次印刷

标准书号 ISBN 978-7-5345-8752-8  
定 价 80.00元

---

图书如有印刷质量问题, 可随时向印刷厂调换。

# 序

灯饰行业发展迅猛，特别是随着LED产品的出现，灯饰的设计及应用，更体现出个性化、艺术化、智能化的未来发展趋势。佛山市凯西欧灯饰有限公司提出“以人的需求来设计灯具的情调照明理念”，该理念以环保、健康、智能化为宗旨，坚持以人为本，革命性地创新设计，打破了该设计理论长期被国外垄断的局面，掀起了照明行业的时尚风暴。

何为情调照明？就是为满足人们的高层次精神需求，将人的心理活动和情感寄托融入照明设计中，将照明与艺术、美学、音乐、智能学等科学地结合在一起，使照明具有营造情调和美感、调节心情等作用。

情调照明是动态的，情调照明可依据不同年龄段，依据人在不同环境下的微妙的生理及心理需要，营造出一种最恰到好处的光环境。

本书从最初的设计方案到现在结集成册，历经两年多时间，凝聚了大家的许多心愿和汗水。本书详细介绍了情调照明的定义、情调照明的起源、情调照明设计理念，图文并茂地对一些场景做出诠释，并展示了众多生动的设计方案供读者参阅。

本书堪称中国第一本引领LED照明设计潮流的书籍，书中最新情调照明设计理念贡献出来与大家分享，也是借此希望更多专家学者、设计师参与讨论和提出建议，从而为中国照明行业的发展提供更多的理论参考。

吴育林

2011.05

With the rapid development of lighting industry, particularly the emergence of LED products, the growing trend is for lighting design and application to become more individualized, more artistic and more intelligent. Cosio Lighting Ltd put forward the idea of "sentimental lighting" to design the fittings based on human needs. This concept is aimed at environmental protection, health and intelligence, and breaks foreign countries' monopoly in lighting design in China. What is "sentimental lighting"? It means to reflect people's mental activities and spiritual sustenance and blend lighting with art, aesthetics, music and intelligence, with the result that lighting can give a romantic touch to our lives and regulate mood.

Sentimental lighting is dynamic in that it can create an appropriate lighting environment according to people's age and individual needs in different circumstances.

It is over two years since the present book was first conceived. It offers the definition, the origin and design principles of sentimental lighting. The explanations of the design plans are interspersed with nice pictures.

The present book is the first of its kind in China. We have shared with readers our design ideas about sentimental lighting in the hope that more scholars and designers will be engaged in the discussion about sentimental lighting to make more theoretical contributions to Chinese lighting industry.

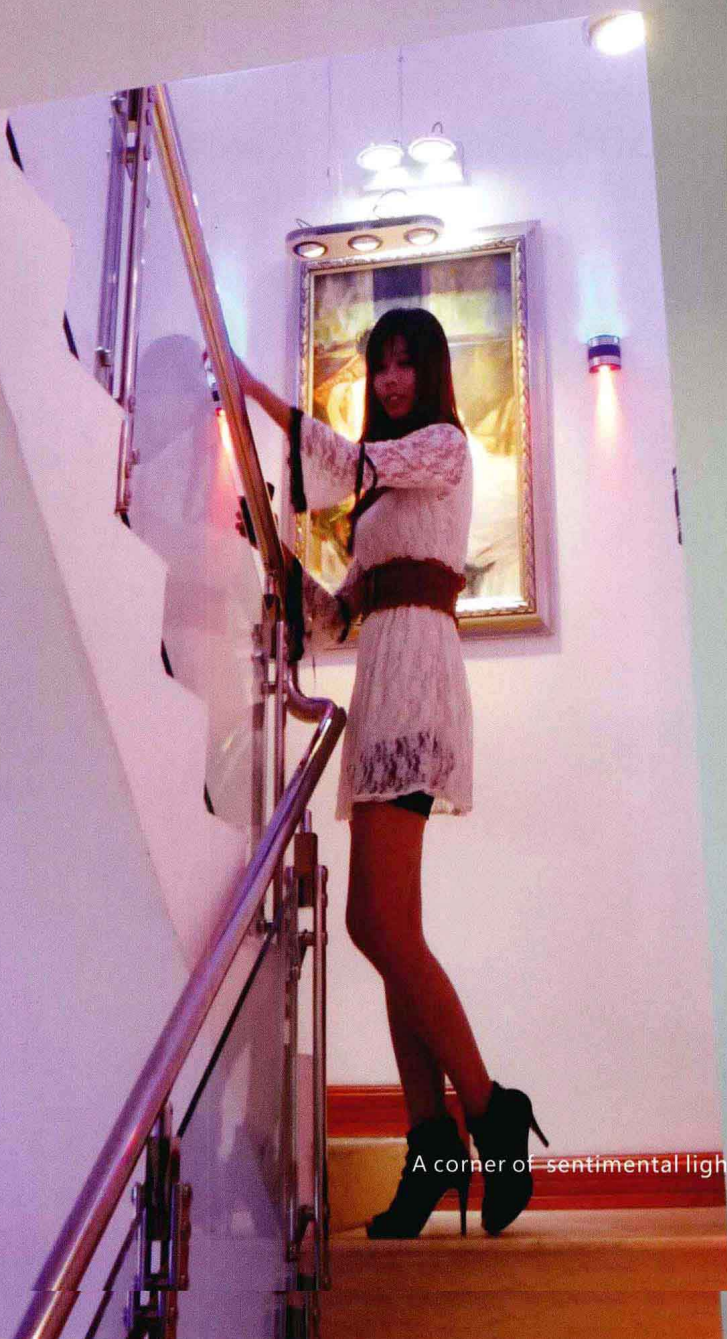
Wu Yulin

May, 2011

- 情调照明缘起 1  
Origin of sentimental lighting
- 情调照明的意义 4  
Aspects of sentimental lighting
- 何为情调照明 5  
What is sentimental lighting
- 灯光与情调 8  
Light and sentiment
- 情调照明作品欣赏 10  
Works of sentimental lighting
  - 场景篇 11  
Scenes
  - 色彩篇 38  
Colors
  - 浪漫篇 54  
Romance
  - 创意篇 64  
Creativity
- 情调照明设计师介绍 97  
Sentimental lighting designers

# Origin of sentimental lighting

情  
调  
照  
明  
缘  
起



情调照明体验馆一角

A corner of sentimental lighting experiencing center

2006年，一个参加完某展会的客户拜访佛山市凯西欧灯饰有限公司，在谈到参观展会后的感受时，她说：“现在参展的企业普遍都是在拼产品价格，产品款式也都很接近，始终突破不了传统照明的设计，LED的丰富色彩都运用不了！”然后她问该公司总经理吴育林：“为什么你们不能将LED色彩融入灯具设计呢？”

这件事对吴总的触动很大，“对呀，有创新才能前进，目前市场上的灯具千篇一律，传统灯具已经进入激战阶段，为什么不能突破思维？为什么不采纳客户的建议呢？”

于是，吴总带领公司设计人员开始着手讨论，经过公司设计师、工程师多次的讨论研究，图纸设计，图纸修改，样品测试，反复改良，最后终于完成了一款情调灯具，即中间主光源，外侧LED辅光源。其特点是既有照明功能，又有装饰效果。

A customer visited Cosio Lighting Ltd after attending an Expo in 2006 and complained, "All the companies at the Expo are competing in price and their products are almost the same in design – traditional lighting design. No one can use the rich colors of LED." Then she asked Mr. Wu Yulin, general manger of Cosio Lighting Ltd, "Why don't you put the LED colors into lighting design?" This badly shook up Mr. Wu, "Yes, no innovation, no competitiveness. Now all the light fittings follow the same pattern. Why not break old conventions and take the customer's advice?"

Then Mr. Wu began to discuss the matter with the designers of the company. Based on the detailed discussion among the designers and engineers and the long process of design-revision-test-improvement, a sentimental light was finally produced – a light with the main source in the middle and the auxiliary LED source on the four sides for both lighting and decorative functions.

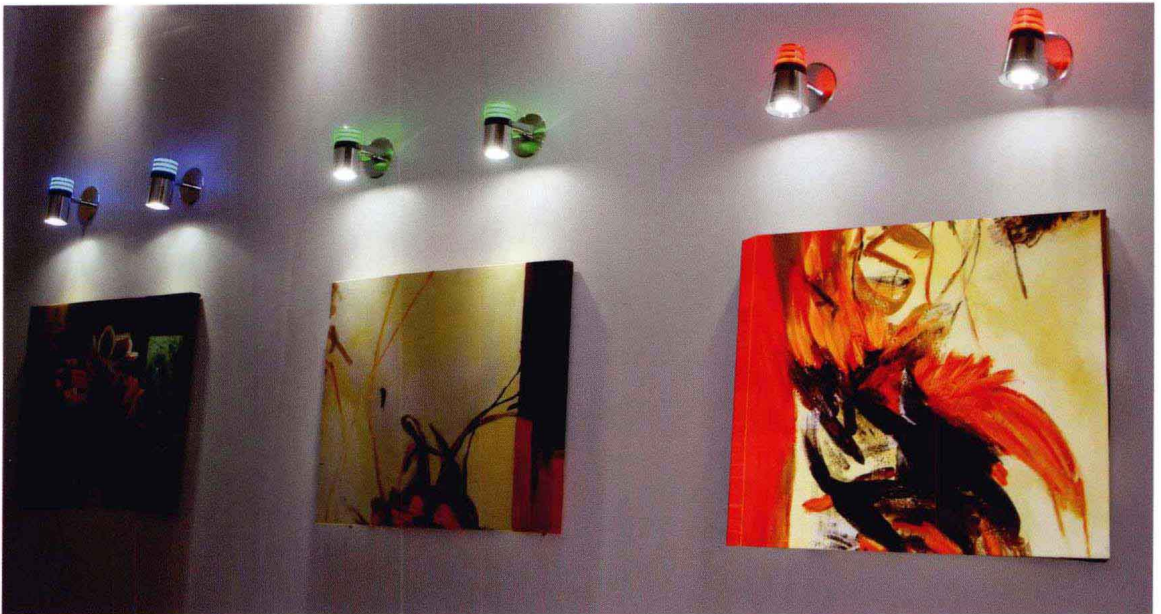




情调照明应用场景  
An example of sentimental lighting

# 情调照明的意义

## Aspects of sentimental lighting



1. 环保节能，色彩丰富。
2. 高显色性及健康照明。
3. 智能化，能调光，调色温，调显色性及加入音乐、空气净化等各种人性化要求。
4. 艺术化、个性化表现。

1. Environmentally friendly, energy saving and rich in color.
2. High color rendering and healthy lighting.
3. Intelligent, adjustable light, adjustable color temperature, adjustable color rendering, with music and air purifier.
4. Artistic and individualized.

# 何为情调照明

## What is sentimental lighting

什么是“情调照明”？情调照明是以人为本、以人的情感为出发点，从人文的角度去创造一种意境般的光照环境。情景照明以场所为出发点，旨在营造一种漂亮、绚丽的光照环境，去烘托场景布置效果，使人感觉到有场景氛围。

情调照明与情景照明有所不同，情调照明是动态的，是可以满足人的精神需求的照明方式，它使人感到有情调；而情景照明是静态的，它只能强调场景光照的需求，而不能表达人的情绪。从某种意义上说，情调照明涵盖情景照明。

What is “sentimental lighting”? Sentimental lighting is human-oriented and emotion-oriented, aiming at creating a light environment with a personal touch, while scene lighting is place-oriented, aiming at creating a beautiful and brilliant light environment and heightening the effect of the scene layout. Sentimental lighting is different from scene lighting in that the former is dynamic and meets people's spiritual need while the latter is static and only satisfies people's need for scene lighting without expressing people's emotions. To some extent, sentimental lighting covers scene lighting.

情调照明，是用光、用色彩，把人的情绪和所处环境高度统一起来，让人的情绪在一种意境中得到释放和升华。如果你心情喜悦，那么适当的红光可以释放你的感情；如果你情绪低落，那么适当的绿色光照可以平静你的心情。光照和色彩，可以表达一种精神意境，使人的心理需求得到满足。

这就是情调照明，它以场景、灯光和人的情绪的彼此呼应，来营造出一种可以满足人的精神需求的光环境。

现代医学和绘画理论早已证实，色彩和光线一样，也会对人的生理、心理产生影响。它不但影响人的视觉神经，还进而影响心脏、内分泌机能、中枢神经系统的活动。

西方心理学家也指出，红橙黄绿青蓝紫等颜色对人的生理有不同的影响。

红色：刺激和兴奋神经系统，增加肾上腺素分泌和增进血液循环。

橙色：诱发食欲，帮助恢复健康和吸收钙。

黄色：可刺激神经和消化系统。

绿色：有益于消化和身体平衡，有镇静作用。

蓝色：能降低脉搏、调整体内平衡。

紫色：对运动神经和心脏系统有抑制作用。

正是对光照和色彩功能有了深刻的了解，把LED应用技术和光学理论、色彩学理论高度结合起来，才创造了“情调照明”这一模式。

“情调”在字面上的定义很多，提炼出来就是人对这个世界美好事物的一种情感体验，以及这种体验所折射出来的人的思想格调和生活品味。当人们的物质生活得到一定的满足后，必然选择对真情的渴求和对生活的细致品味。“情调”意味着一种享受生活的态度。

情调照明就是围绕人的情感体验，将艺术和技术高度融合，以光、影、色、形为表现形式，营造独特的、具有艺术美感的、令人感动的氛围。

情调照明是以人的情感为出发点，从人文的角度去创造一种极具意境的光照环境。这种环境氛围可以是动态变化的，随着人的情感需求而改变它的光、影、色、形，在变化的过程中还可以融入不同的节奏，从而达到人与照明的互动和交流。

Sentimental lighting means to use light and color to unify people's mood and the environment so that people can release and distillate their emotions. If you are happy, the appropriate red light can release your feelings; if you are depressed, the appropriate green light can calm you down. Light and color can express people's mood and meet their spiritual needs.

This is sentimental lighting. It coordinates scenes, lights and people's feelings and creates a light environment that meets people's spiritual needs.

The theories of modern medicine and painting have proved that like light, color can also influence people's physiology and psychology. It can influence not only people's optical nerves but also the heart, the endocrine system and the central nervous system. Psychologist have also pointed out that different colors have physiological influences on people.

Red: stimulating the nervous system, adrenaline secretion and improving blood circulation;

Orange: stimulating the appetite, aid recovery and absorption of calcium;

Yellow: stimulating the nervous and digestive systems;

Green: helping digestion and body balance, sedative;

Blue: reducing the pulse rate and improving body balance;

Purple: inhibiting the motor nerve and the heart.

Based on a deep understanding of the functions of light and color and a perfect combination of the LED technology and optical and color theories, we have proposed the model of "sentimental lighting".

There are many definitions of the word "sentiment". Basically, it refers to people's emotional experience of the good things in this world and people's taste as reflected in the experience. After people's material needs are satisfied to some extent, people will certainly desire true feelings and a refined taste for life. Sentiment means an attitude of enjoying life.

Sentimental lighting is a combination of art and technology. Centering on people's emotional experience, it uses light, shadow, color and form to create a unique, artistic and moving atmosphere.

Based on human emotions, sentimental lighting attempts to create a lighting environment with a mood in a humanistic way. The environment is dynamic in that the light, shadow, color and form can all be changed according to people's emotional needs. In the process, a variety of rhythms can be followed so that people and lighting interact and communicate with each other.

# 灯光与情调

## Light and sentiment

灯光具有情调倾向性，灯光的方向、强度、色温和形态可使被照空间和物体的形、色、阴影、质感、氛围产生丰富的变化。同一个物体或空间，随着灯光的变化会产生不同的情调。

**强光：清新情调**

光照较强、明暗反差较大的环境，人往往会有赏心悦目、清新明亮的感觉。“阳光明媚、晴空万里”都是描绘这种清新的情调。光量充足、光比大，容易表现欢快的情调。

**弱光：朦胧情调**

亮度比较低的光照称作弱光。“月上柳梢头，人约黄昏后”，是对弱光意境最好的描绘。由于光照弱，产生的视觉效果反差小。边界不够清晰，容易遮掩、模糊环境和物体，空间画面会显得比较混沌、模糊，有朦胧感和压抑感。弱光可以衍生出许多独特的情调效果，如朦胧、暧昧、神秘、紧张、忧愁、哀伤等。

**暖色光：热烈情调**

暖色光如日出、夕阳的金光，使人产生兴奋、热烈、性感等情调感。舞厅、酒吧多喜欢运用。

**冷色光：幽静情调**

冷色光中特别突出的是蓝色情调。蓝色给人安静、幽静、清静、神秘的感受。

Lights and sentiment are related in that the direction and strength of lights, color temperature and forms can add variety to the form, color, shadow, texture and atmosphere of the lighted space and objects so that the same object or space will cause different sentiments with the change of lights.

**Strong light: fresh sentiment**

In an environment with strong light, people tend to be in a good mood. "bright sunshine and clear sky" are the word often used to describe this sentiment. Strong light and sharp contrast represent this cheerful mood accurately.

**Weak light: hazy sentiment**

"When the moon climbed up the willow's height, I dated my sweetheart in the twilight." This famous Chinese poem is a perfect description of the

sentiment caused by weak light. Weak light can only make a slight visual contrast and therefore obscures the environment and objects. Weak light can cause such sentiments as hazy, mysterious, nervous, depressed and grieved.

Warm light: warm sentiment

Warm light such as the light at sunrise and sunset can excite and animate people. Warm light is more often seen in dance halls and bars.

Cold light: quiet sentiment

From all the cold colors stands out blue, which give us quiet, peaceful and mysterious feelings.





情调照明作品欣赏  
Works of sentimental  
lighting





SCENES

场景

情调照明体验馆一角  
A corner of sentimental lighting experiencing center