

贵州省

GUIZHOU SHENG

开阳县地名录

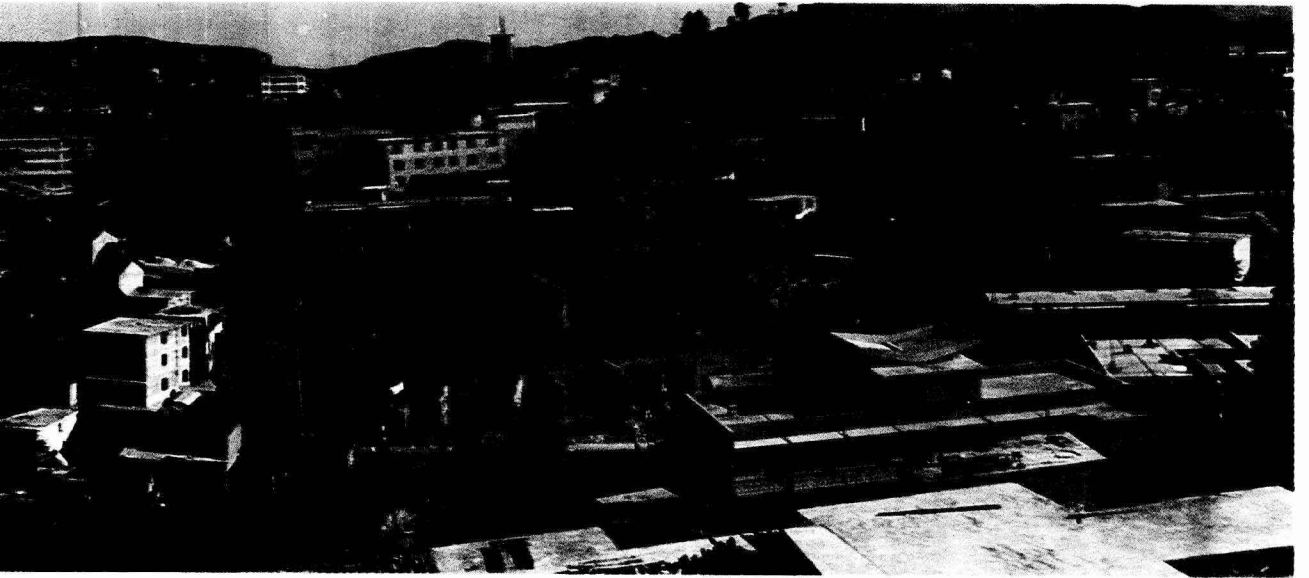
KAIYANGXIAN DIMINGLU



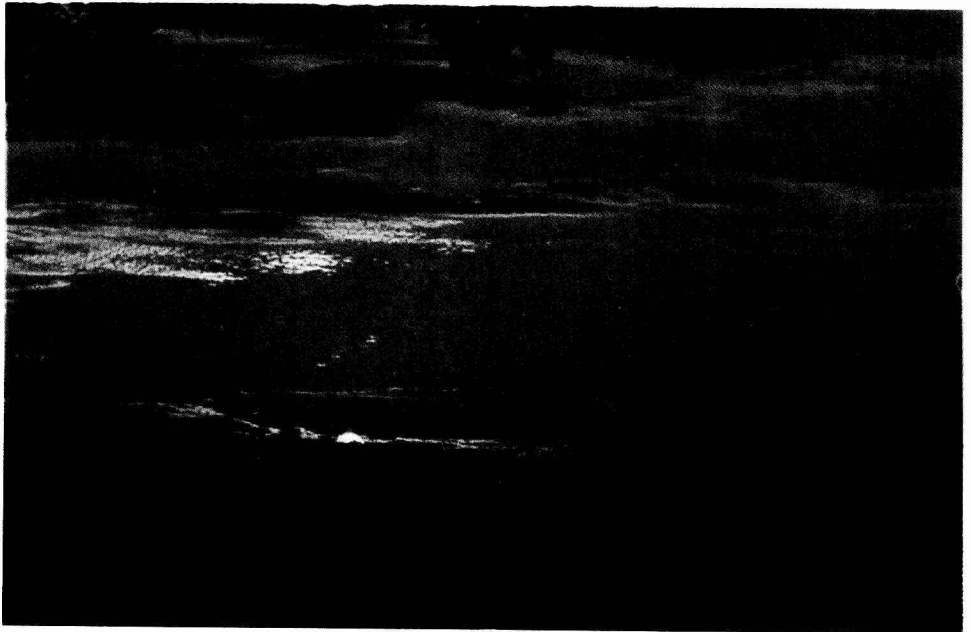
开阳县人民政府

开阳县地名录

Kaiyangxian diminglu



金袍山观日出



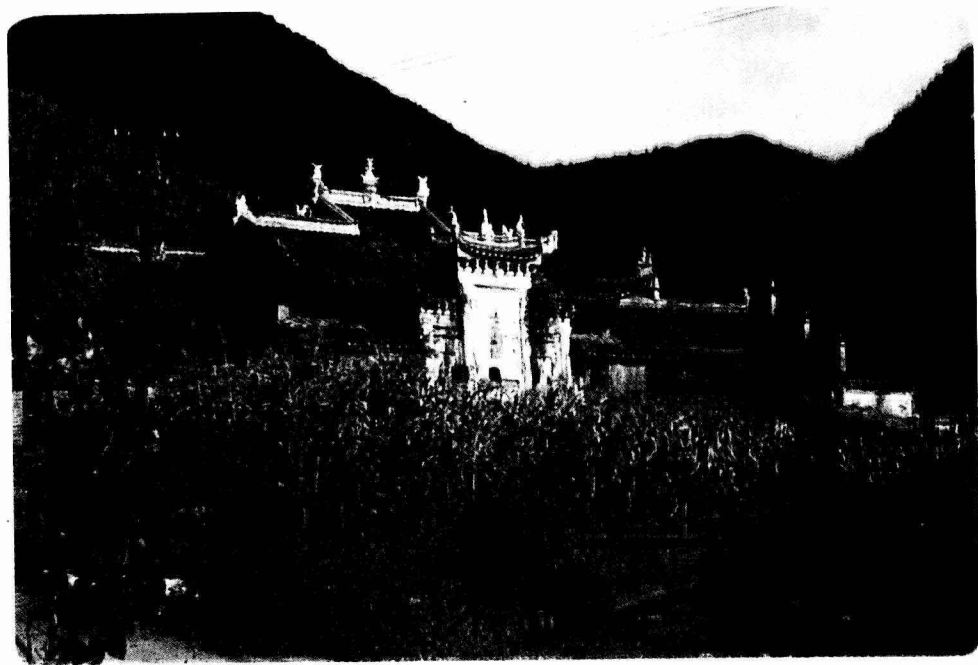


(一)

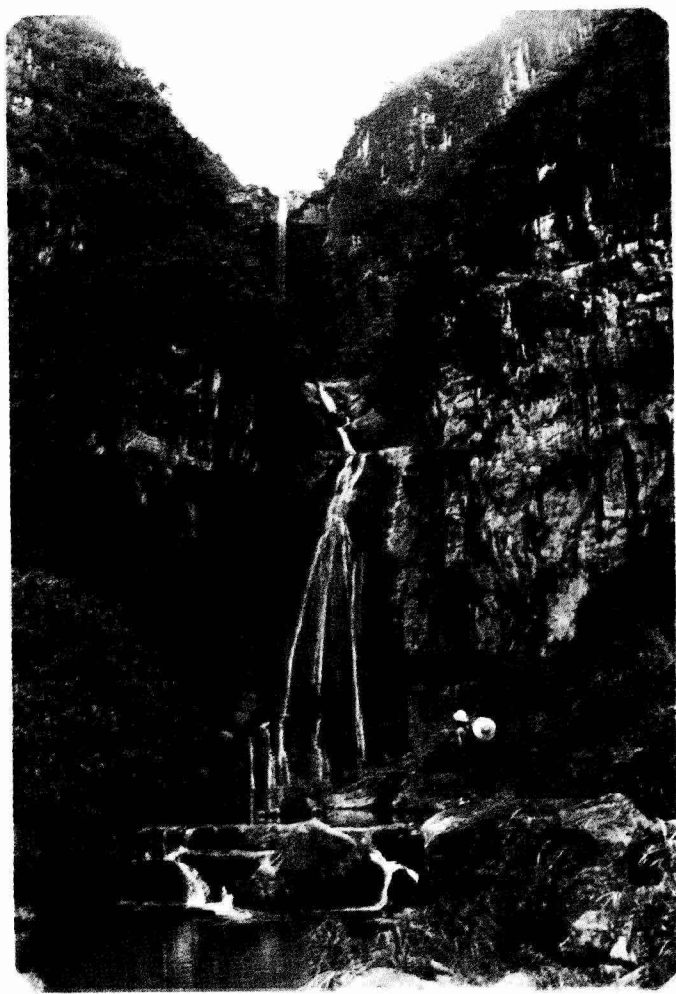


(二)

白马乡宝王宫



冯三龙圪锅底幽





高云乡三块石



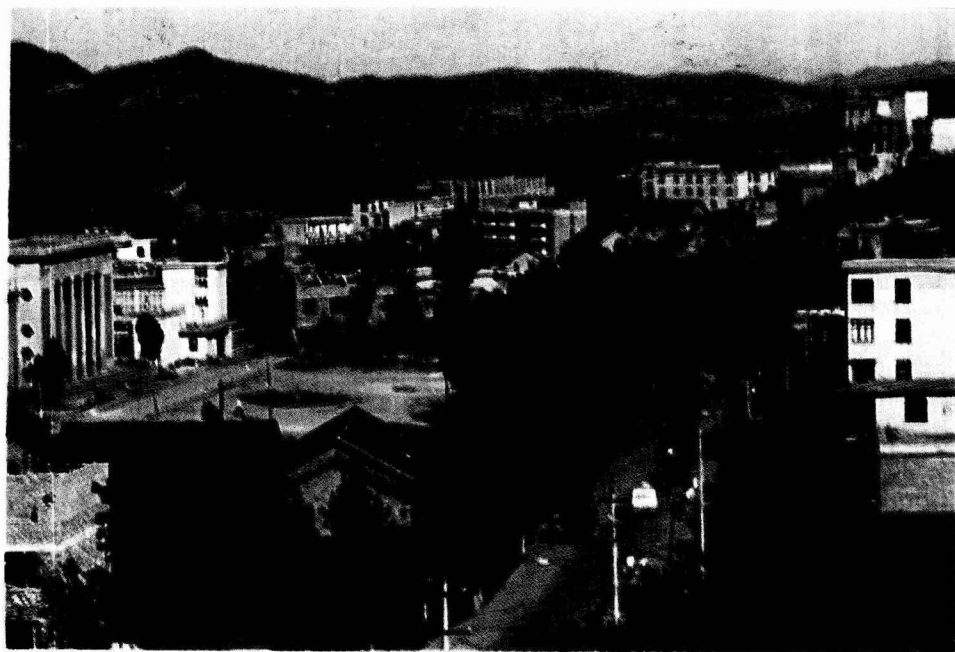
杠寨乡石碑坊

双流乡石笋口



开阳县电影院





开阳县城西郊



水头寨古树

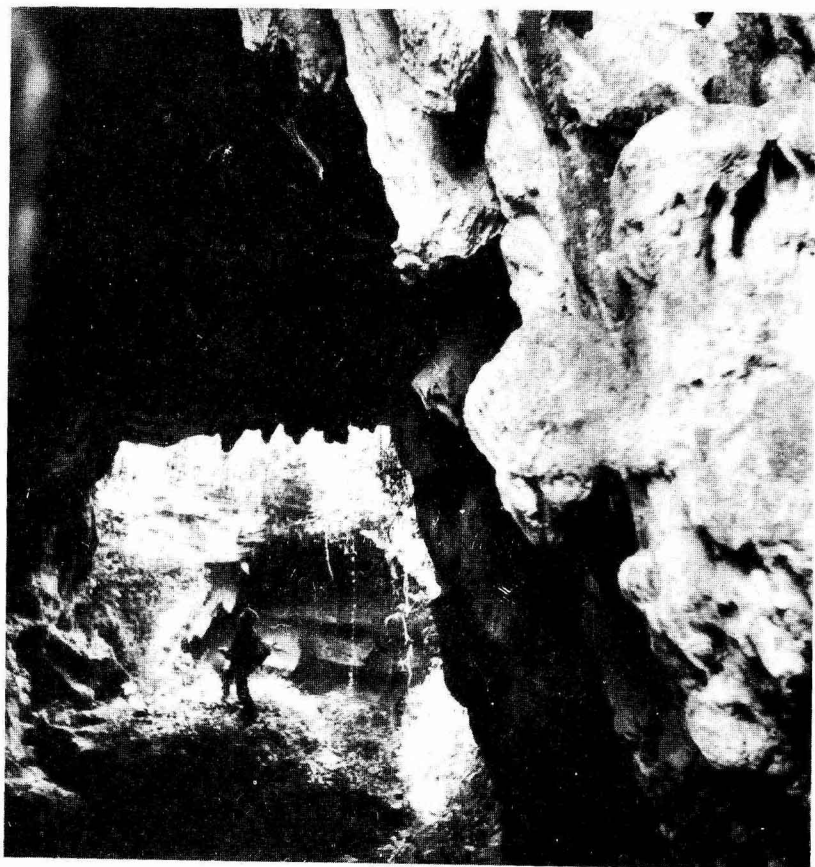


从天生桥看白安营



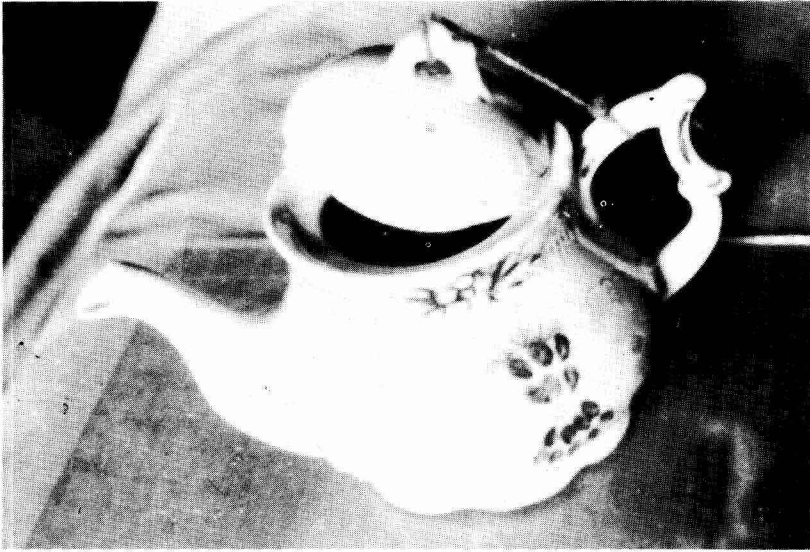
雙永林場

曙云洞

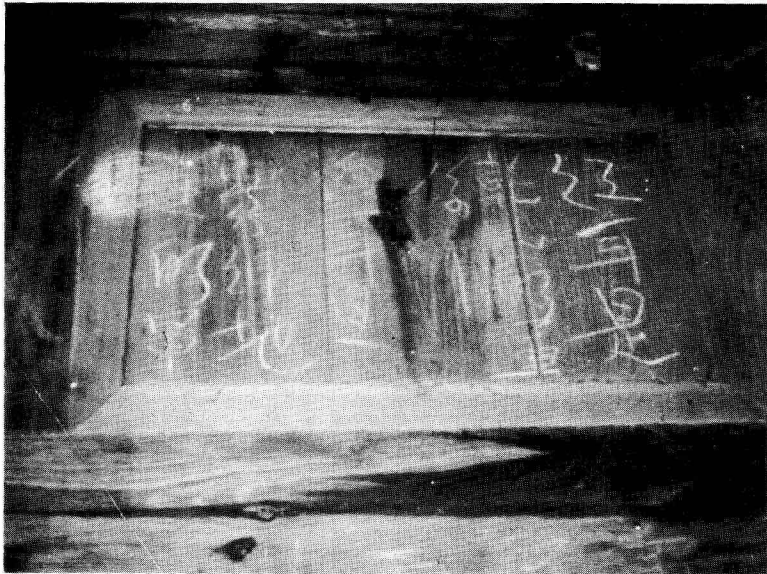


轿顶山

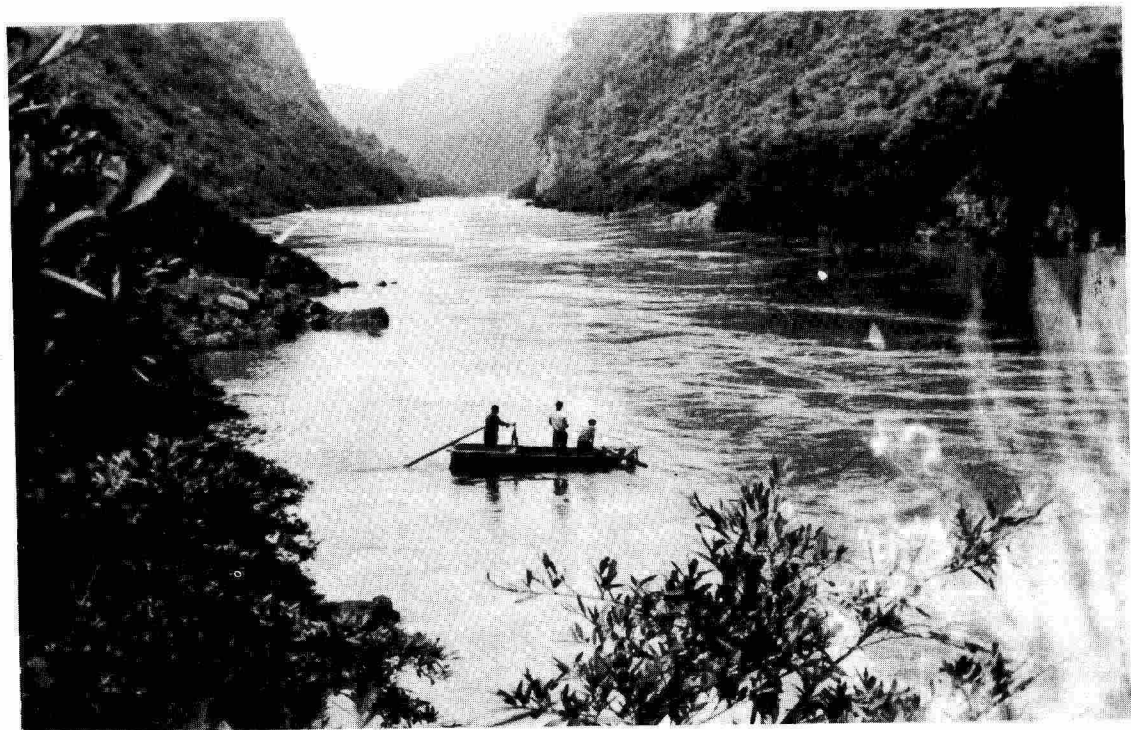




红军赠送苗胞的瓷壶



红军书写在苗胞墙壁上的标语



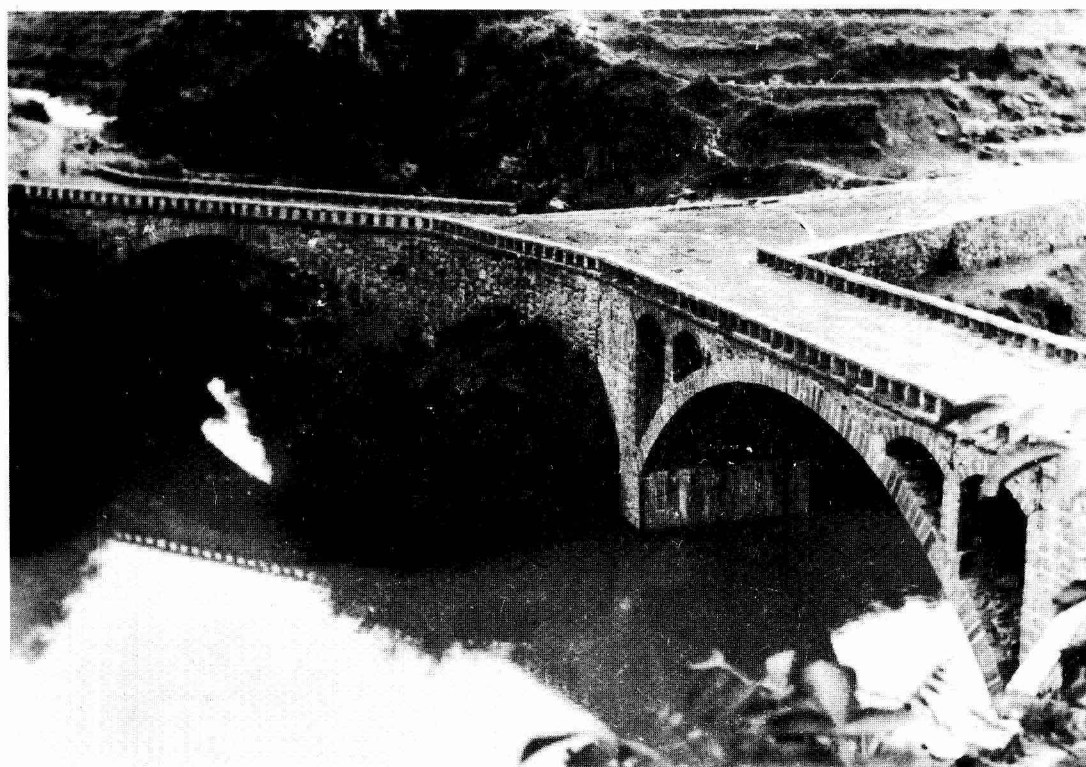
红军经过的茶山关

钟昌祚墓

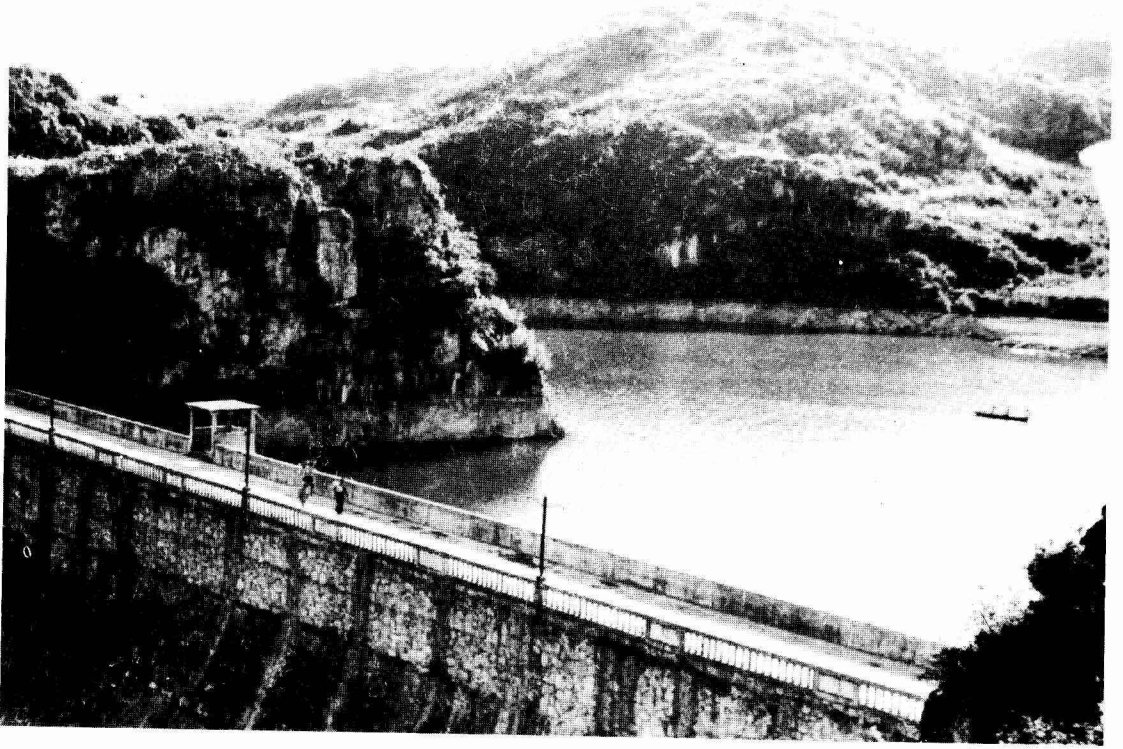




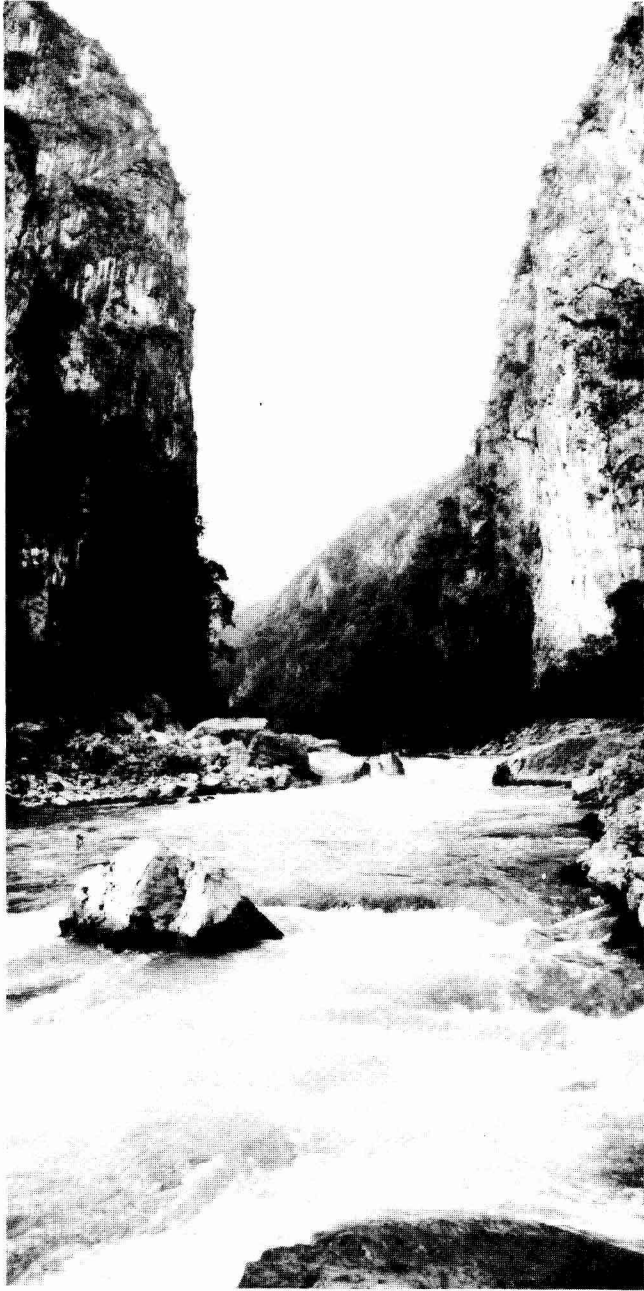
乐旺河大桥



王车大桥



翁井水库



司毛坪两扇门