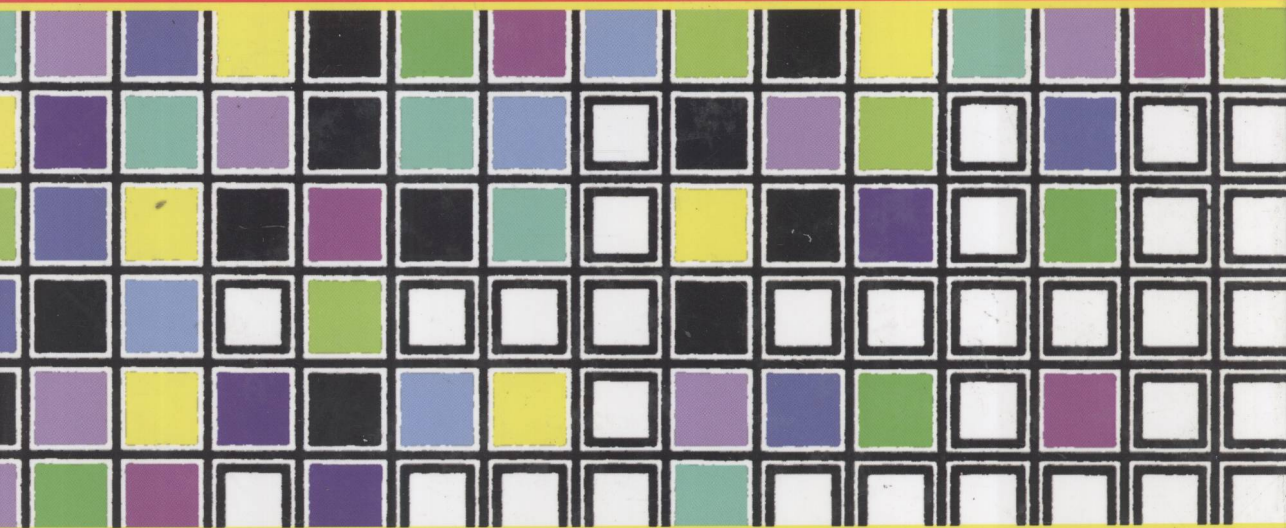


# Cellular neural networks and visual computing

Foundations and applications



Leon O. Chua and Tamás Roska

TP183  
C559

# Cellular neural networks and visual computing

---

Foundation and applications

Leon O. Chua

and

Tamás Roska



E200300023



**CAMBRIDGE**  
UNIVERSITY PRESS

PUBLISHED BY THE PRESS SYNDICATE OF THE UNIVERSITY OF CAMBRIDGE  
The Pitt Building, Trumpington Street, Cambridge, United Kingdom

CAMBRIDGE UNIVERSITY PRESS  
The Edinburgh Building, Cambridge CB2 2RU, UK  
40 West 20th Street, New York, NY 10011-4211, USA  
477 Williamstown Road, Port Melbourne, VIC 3207, Australia  
Ruiz de Alarcón 13, 28014, Madrid, Spain  
Dock House, The Waterfront, Cape Town 8001, South Africa  
<http://www.cambridge.org>

© Cambridge University Press 2002

This book is in copyright. Subject to statutory exception  
and to the provisions of relevant collective licensing agreements,  
no reproduction of any part may take place without  
the written permission of Cambridge University Press.

First published 2002

Printed in the United Kingdom at the University Press, Cambridge

*Typeface* Times 10.5/14pt. *System* L<sup>A</sup>T<sub>E</sub>X 2<sub>ε</sub> [DBD]

*A catalogue record of this book is available from the British Library*

*Library of Congress Cataloguing-in-Publication data*

Chua, Leon O., 1936–

Cellular neural networks: foundation and primer / Leon O. Chua and Tamás Roska.  
p. cm.

Includes bibliographical references and index.

ISBN 0 521 65247 2

I. Neural networks (Computer Science) I. Roska, T. II. Title.

QA.76.87.C494 2002

006.3'2–dc21 2001025555

ISBN 0 521 65247 2 hardback

## Cellular neural networks and visual computing

Cellular Nonlinear/neural Network (CNN) technology is both a revolutionary concept and an experimentally proven new computing paradigm. Analogic cellular computers based on CNNs are set to change the way analog signals are processed and are paving the way to an entire new analog computing industry.

This unique undergraduate-level textbook includes many examples and exercises, including CNN simulator and development software accessible via the Internet. It is an ideal introduction to CNNs and analogic cellular computing for students, researchers, and engineers from a wide range of disciplines. Although its prime focus is on visual computing, the concepts and techniques described in the book will be of great interest to those working in other areas of research, including modeling of biological, chemical, and physical processes.

**Leon Chua** is a Professor of Electrical Engineering and Computer Science at the University of California, Berkeley where he coined the CNN in 1988 and holds several patents related to CNN Technology. He received the Neural Network Pioneer Award, 2000.

**Tamás Roska** is a Professor of Information Technology at the Pázmány P. Catholic University of Budapest and head of the Analogical and Neural Computing Laboratory of the Computer and Automation Research Institute of the Hungarian Academy of Sciences, Budapest and was an early pioneer of CNN technology and a coinventor of the CNN Universal Machine as an analogic supercomputer. He has also spent 12 years as a part-time visiting scholar at the University of California at Berkeley.

**To our wives, Diana and Zsuzsa**

# Acknowledgements

We started to teach a formal course devoted entirely to CNN only in 1996, in the Spring Semester, at Berkeley and in the Autumn Semester in Budapest. Since then, several versions of Lecture Notes have been iterated. We are indebted to many of our former students – some of whom have become our coworkers – who have helped us in various forms we are thankful to all of them. Dr. Ákos Zarándy, Dr. Ken Crounse, Dr. Csaba Rekecky, Dr. Chai-Wah Wu, Dr. László Kék, Dr. László Nemes, Dr. András Radványi, and Dr. Péter Szolgay, as well as Tao Yang, An-Shan Huang, Dávid Bálya, Katalin Keserű, István Petrás and István Szatmári made special efforts to help us during the many years of forming the text to this present version. We are also grateful to Phil Meyler for his kind initiative to publish this textbook.

**Leon O. Chua and Tamás Roska**

Berkeley–Budapest, May 2000

# Contents

*Acknowledgements*

*page xi*

<b>1</b>	<b>Introduction</b>	<b>1</b>
<b>2</b>	<b>Notation, definitions, and mathematical foundation</b>	<b>7</b>
2.1	Basic notation and definitions	7
2.2	Mathematical foundations	14
<b>3</b>	<b>Characteristics and analysis of simple CNN templates</b>	<b>35</b>
3.1	Two case studies: the EDGE and EDGEGRAY templates	35
3.2	Three quick steps for sketching the shifted DP plot	49
3.3	Some other useful templates	50
<b>4</b>	<b>Simulation of the CNN dynamics</b>	<b>100</b>
4.1	Integration of the standard CNN differential equation	100
4.2	Image input	101
4.3	Software simulation	102
4.4	Digital hardware accelerators	110
4.5	Analog CNN implementations	111
4.6	Scaling the signals	113
4.7	Discrete-time CNN (DTCNN)	114

<b>5</b>	<b>Binary CNN characterization via Boolean functions</b>	<b>115</b>
5.1	Binary and universal CNN truth table	115
5.2	Boolean and compressed local rules	122
5.3	Optimizing the truth table	124
<b>6</b>	<b>Uncoupled CNNs: unified theory and applications</b>	<b>139</b>
6.1	The complete stability phenomenon	139
6.2	Explicit CNN output formula	140
6.3	Proof of completely stable CNN theorem	142
6.4	The primary CNN mosaic	155
6.5	Explicit formula for transient waveform and settling time	156
6.6	Which local Boolean functions are realizable by uncoupled CNNs?	161
6.7	Geometrical interpretations	162
6.8	How to design uncoupled CNNs with prescribed Boolean functions	166
6.9	How to realize non-separable local Boolean functions?	173
<b>7</b>	<b>Introduction to the CNN Universal Machine</b>	<b>183</b>
7.1	Global clock and global wire	184
7.2	Set inclusion	184
7.3	Translation of sets and binary images	188
7.4	Opening and closing and implementing any morphological operator	190
7.5	Implementing any prescribed Boolean transition function by not more than 256 templates	195
7.6	Minimizing the number of templates when implementing any possible Boolean transition function	198
7.7	Analog-to-digital array converter	201
<b>8</b>	<b>Back to basics: Nonlinear dynamics and complete stability</b>	<b>205</b>
8.1	A glimpse of things to come	205
8.2	An oscillatory CNN with only two cells	205
8.3	A chaotic CNN with only two cells and one sinusoidal input	210
8.4	Symmetric <b>A</b> template implies complete stability	214
8.5	Positive and sign-symmetric <b>A</b> template implies complete stability	219



8.6	Positive and cell-linking <b>A</b> template implies complete stability	224
8.7	Stability of some sign-antisymmetric CNNs	231
A	Appendix to Chapter 8	236

---

## **9 The CNN Universal Machine (CNN-UM)** 239

9.1	The architecture	240
9.2	A simple example in more detail	244
9.3	A very simple example on the circuit level	246
9.4	Language, compiler, operating system	254

---

## **10 Template design tools** 258

10.1	Various design techniques	258
10.2	Binary representation, linear separability, and simple decomposition	260
10.3	Template optimization	264
10.4	Template decomposition techniques	265

---

## **11 CNNs for linear image processing** 267

11.1	Linear image processing with <b>B</b> templates is equivalent to spatial convolution with FIR kernels	267
11.2	Spatial frequency characterization	269
11.3	A primer on properties and applications of discrete-space Fourier transform (DSFT)	272
11.4	Linear image processing with <b>A</b> and <b>B</b> templates is equivalent to spatial convolution with IIR kernels	272

---

## **12 Coupled CNN with linear synaptic weights** 276

12.1	Active and inactive cells, dynamic local rules	278
12.2	Binary activation pattern and template format	283
12.3	A simple propagating type example with B/W symmetrical rule	284
12.4	The connectivity problem	286

---

## **13 Uncoupled standard CNNs with nonlinear synaptic weights** 290

13.1	Dynamic equations and DP plot	291
------	-------------------------------	-----

<b>14</b>	<b>Standard CNNs with delayed synaptic weights and motion analysis</b>	296
14.1	Dynamic equations	296
14.2	Motion analysis – discrete time and continuous time image acquisition	297
<b>15</b>	<b>Visual microprocessors – analog and digital VLSI implementation of the CNN Universal Machine</b>	304
15.1	The analog CNN core	304
15.2	Analogic CNN-UM cell	310
15.3	Emulated digital implementation	312
15.4	The visual microprocessor and its computational infrastructure	313
15.5	Computing power comparison	318
<b>16</b>	<b>CNN models in the visual pathway and the “Bionic Eye”</b>	320
16.1	Receptive field organization, synaptic weights, and cloning template	321
16.2	Some prototype elementary functions and CNN models of the visual pathway	322
16.3	A simple qualitative “engineering” model of a vertebrate retina	329
16.4	The “Bionic Eye” implemented on a CNN Universal Machine	338
	<i>Notes</i>	339
	<i>Bibliography</i>	348
	<i>Exercises</i>	361
	<i>Appendices</i>	389
	<i>Index</i>	390

# 1 Introduction

## Scenario

Recent history of the electronic and computer industry can be viewed as three waves of revolutionary processes.<sup>1</sup> The first revolution, making cheap computing power available via microprocessors in the 1970s, led to the PC industry of the 1980s. The cheap laser and fiber optics, which resulted in cheap bandwidth at the end of the 1980s, led to the Internet industry of the 1990s. The third wave, the sensor revolution at the end of the 1990s, will also provide for a new industry. Sensor revolution means that cheap sensor and MEMS (micro-electro-mechanical system) arrays are proliferating in almost all the conceivable forms. Artificial eyes, nose, ears, taste, and somatosensory devices as well as sensing all physical, chemical, and biological parameters, together with microactuators, etc. are becoming commodities. Thousands and millions of generically analog signals are produced waiting for processing. A new computing paradigm is needed. The cited technology assessment<sup>1</sup> reads:

The long-term consequence of the coming sensor revolution may be the emergence of a newer analog computing industry in which digital technology plays a mere supporting role, or in some instances plays no role at all.

For processing analog array signals, the revolutionary Analogic Cellular Computer paradigm is a major candidate. The core of this computer is a Cellular Nonlinear/neural network<sup>2</sup> (CNN), an array of analog dynamic processors or cells. The computer architecture is the CNN Universal Machine,<sup>3</sup> with its various physical implementations. At the same time, Analogic CNN computers mimic the anatomy and physiology of many sensory and processing organs with an additional capability of stored programmability. Recent studies on optical and nano-scale implementations open up new horizons on the atomic and molecular levels.

The CNN was invented by Leon O. Chua and Lin Yang in Berkeley in 1988. Unlike cellular automata, CNN host processors accepting and generating analog signals, the time is continuous, and the interaction values are also real values. Unlike lattice dynamics, the input of the CNN array plays an important role. Moreover, CNN becomes a rigorous framework for complex systems exhibiting emergent behavior and the various forms of emergent computations. The notion of the cloning template, the

representation of the local interconnection pattern, is crucial. This allows not only modeling but also engineering of complex systems.

*Stored programmability*, invented by John von Neumann, was the key for endowing digital computers with an almost limitless capability within the digital universe of signals, *opening the door to human invention* via digital algorithms and software. Indeed, according to the Turing–Church thesis, any algorithms on integers conceived by humans can be represented by Recursive functions/Turing Machines/Grammars. The *CNN Universal Machine is universal* not only in a Turing sense but also on analog array signals. Due to stored programmability, it is *also open to human intelligence* with a practically limitless capability within the universe of analog array signals, via analogic spatio-temporal algorithms and software.

The new world opened by the Analogic CNN computing paradigm is nowadays a reality. There are operational focal plane visual microprocessors with 4096 or 16 000 processors, which are fully stored, programmable, and there are Walkman-size self-contained units with image supercomputer speed.

The CNN Universal Chip<sup>4</sup> highlighted on the cover of this book represents a milestone in information technology because it is the first operational, fully programmable industrial-size brain-like stored-program dynamic array computer in the world. This complete computer on a chip consists of an array of  $64 \times 64$  0.5 micron CMOS cell processors, where each cell is endowed not only with a photo sensor for direct optical input of images and videos, but also with communication and control circuitries, as well as local analog and logic memories. Each CNN cell is interfaced with its nearest neighbors, as well as with the outside world. This massively parallel focal-plane array computer is capable of processing 3 trillion equivalent digital operations per second (in analog mode), a performance which can be matched only by supercomputers. In terms of the *SPA* (*speed, power, area*) measures, this CNN universal chip is far superior to any equivalent DSP implementation by at least three orders of magnitude in either *speed, power, or area*. In fact, by exploiting the state-of-the-art vertical packaging technologies, close to *peta* ( $10^{15}$ ) OPS CNN universal cube can be fabricated with such universal chips, using  $200 \times 200$  arrays.

There are many applications which call for TeraOPS or even PetaOPS in a Walkman-size device. Some of these applications include high-speed target recognition and tracking, real-time visual inspection of manufacturing processes, intelligent vision capable of recognizing context sensitive and moving scenes, as well as applications requiring real-time fusing of multiple modalities, such as multispectral images involving visible, infrared, long wave infrared, and polarized lights.

In addition to the immense image and video processing power of the CNN universal chip, we can exploit its unique brain-like architecture to implement brain-like information processing tasks which conventional digital computers have found wanting. Such brain-like processing operations will necessarily be *non-numeric* and *spatio-temporal* in nature, and will require no more than the accuracy of common neurons, which is

less than eight bits. Since the computation is a non-iterative wave-like process, the input–output accuracy is not constrained by the iterative digital process. The CNN universal chip is therefore an ideal tool for developing and implementing brain-like information processing schemes. It is this vision of brain-like computing via the CNN universal chip that makes the publication of this textbook both a timely and historic event, the first undergraduate textbook on this new computing paradigm.

## The textbook

Cellular Nonlinear/neural Networks (CNN) is an invention with rapid proliferation. After the publication of the cited original paper by Chua and Yang in 1988, several papers explored the rich dynamics inherent in this simple architecture. Indeed, many artificial, physical, chemical, as well as living (biological) systems and organs can be very conveniently modeled via CNN. Hence, the book is written in such a way that no electronic circuit knowledge is needed to understand the first 14 chapters of this book. Indeed, it is our teaching experience, at Berkeley and in Budapest, that undergraduate students from different backgrounds and with a modest knowledge of mathematics and physics taught in engineering, physics, and chemistry departments, as well as biology students from similar backgrounds can understand the book.

In Chapter 2, the basic notations, definitions, and mathematical foundation are presented. The standard CNN architecture is introduced. The cell, the interconnection structure, the local connectivity pattern, the canonical equations and some useful notations, and the biological motivation are described. The importance of the local interconnection “synaptic weight” pattern, the cloning template, or gene, is emphasized. Indeed, these templates, mostly defined by 19 parameters, define the complete array dynamics, which generate an output “image” from an input “image.”

In Chapter 3, after two examples, a simple technique for determining array dynamics, based on cell dynamics, is introduced and explained. Next, 11 useful templates are shown with examples and rigorous mathematical analysis.

Chapter 4 is devoted to the digital computer simulation of CNN dynamics. Numerical integration algorithms, digital hardware accelerators, as well as the analog implementation are discussed. An accompanying simulator CANDY is provided in the Appendix.

In Chapter 5 the characterization of the simplest form of a CNN is explored and the binary input binary output case is described. It is quite surprising that even this very basic form with a  $3 \times 3$  neighborhood template could implement  $2^{512} \sim 10^{134}$  different local Boolean functions.

Uncoupled CNN templates constitute a simple class of CNN. Their unified theory and applications described in Chapter 6 provide a thorough understanding of this class of CNN.

In Chapter 7, we begin the introduction of the CNN computer represented by the CNN Universal Machine architecture. We emphasize the need for local analog and logic memory, a global clock and global wire, as well as a local logic unit. It is shown, for example, that every local Boolean function can be realized by using these simple elements in each cell processor.

In Chapter 8, “Back to Basics,” the mathematical analysis of the stability of CNN in terms of cloning templates is presented. It turns out that, in most cases, simple conditions are available to test the templates defining completely stable CNN.

The complete architecture of the CNN Universal Machine is shown in Chapter 9. Moreover, the computational infrastructure consisting of a high-level language, a compiler, operating system, and a development system are introduced. An example describing all the elementary details uncovers the basic implementation techniques.

Chapter 10 presents template design and optimization algorithms. The use of a simple program TEMPO for template optimization and decomposition is prepared and provided in the Appendix.

Many two-dimensional linear filters can be represented by CNN. These techniques are shown in Chapter 11 which also introduces the discrete space Fourier transform.

Once we allow spatial coupling, the dynamics of the CNN becomes not only much richer, but also exotic. The coupled CNN is described in Chapter 12 with a design method for binary propagation problems. In particular, it turns out that the global connectivity problem, long considered impossible by locally connected arrays, can be solved by a quite simple coupled CNN.

Nonlinear and delay type synaptic weights and their use are introduced in Chapters 13 and 14, respectively. These types of CNN are typical in modeling living neural networks as well as in solving more complex image processing problems.

In Chapter 15, we show the basics of the CMOS analog and digital implementation of the CNN Universal Machine. Indeed, the first visual microprocessor and its computational infrastructure are described. A computing power comparison is really breathtaking: about three orders of magnitude speed advantage for complex spatio-temporal problems on the same area of silicon.

Finally, in Chapter 16, the surprising similarity between CNN architecture and models of the visual pathway is highlighted. Models and some measurements in living retina are compared.

In addition to the many examples in the text, exercises at the end of the book help both students as well as lecturers to make practical use of the textbook.

The Appendices, provided via the Internet, contain a CNN template library (TEMLIB), a simple yet efficient simulator (CANDY), and a template design and optimization tool (TEMPO/TEMMASTER). These design tools provide for a working environment for the interested reader as well as for the students to explore this new field of modeling and computing. The text can be taught, typically, as a one-semester course.

## New developments

More than 1000 reviewed papers and books have been published since the seminal paper by Chua and Yang on CNN technology. Recently, the scope has started to broaden in many directions. Various new forms of physical implementations have started to emerge. Optical implementation is already emerging using molecular level analog optical memory (Bacteriorhodopsine or polymer materials) and atomic<sup>5</sup> and molecular<sup>6</sup> level implementation of the CNN array as well as of the CNN Universal Machine may become feasible; the Analogic Cellular Computer represents a new platform for computing. However, this notion of computing contains brand-new elements and techniques, partially reflecting some forms of nature-made information processing.

Nature-made information processing has several different manifestations. On the *molecular level* this means the protein structures or interacting molecules on a two- or three-dimensional grid; on the *neuronal level* it may mean the many sensory organs and subsequent neural processing. On the *functional neuronal level* it may mean the information representation in spatio-temporal memory, the functional laterality of the brain, as well as the parallel processing places and functional units learned via PET, NMR, fNMR, etc. On the *mathematical-physical level* it may mean several dynamic spatio-temporal processes and phenomena represented by different nonlinear partial differential equations (PDEs). Autowaves, spiral waves, trigger waves are just a few of these exotic waves.

In modern image processing, PDE-based techniques are becoming the most challenging and important new directions. For the analogic CNN computer these are the native, elementary instructions like the multiplication, addition, XOR, NAND, etc. in digital computers. A new understanding about computing itself is emerging. The striking intellectual and scientific challenge is how to combine these diverse phenomena in useful algorithms running on a standard spatio-temporal computer, based on the CNN Universal Machine.

The analogic cellular *visual microprocessors*, embedded in a complete programming environment,<sup>7</sup> offer surprising system performance. Two types of tasks are becoming tractable:

**Class K:** Kilo real-time [K r/t] frame rate class.

The frame rate of the process in this class is in the order of about a thousand times faster than the real-time video frame rate (30 frames per second). A typical experiment is where a pattern classification with more than 10,000 frames per second was tested (more than 0.33 K r/t). Using current CMOS technology, 1.5 K r/t, that is about 50,000 frame per second, is feasible.

In this Class K, the high frame rate is the key in the computation. Clearly, the sensing and computing tasks are to be physically integrated. In standard digital technology,

there is no time for A to D conversion and to complete the calculation, all within a few microseconds.

**Class T:** TeraOPS equivalent computing power class.

Even if the frame rate is small, like real-time video (30 frames per second), the required computing power (per chip) is enormous. Indeed, a trillion operations per second are to be – and can be – achieved. These TeraOPS chips are capable of solving a nonlinear PDE on a grid in a few microseconds. The detection of a moving inner boundary of the left ventricle in an echocardiogram, via an analogic CNN algorithm combining several waves, local logic, and morphology operators, took only 250 microseconds on the ACE4K analogic Visual Microprocessor Chip made in Seville. These chips hosted 4096 cell processors on a chip. This means about 3.0 TeraOPS equivalent computing power, which is about a thousand times faster than the computing power of an advanced Pentium processor.

A major challenge, not yet solved by any existing technologies, is to build analogic adaptive sensor-computers,<sup>8</sup> where sensing and computing understanding are fully and functionally integrated on a chip. Adaptive tuning of the sensors, pixel by pixel, is performed based on the content and context of the dynamically changing scene under sensing.



## 2 Notation, definitions, and mathematical foundation

### 2.1 Basic notation and definitions

#### Definition 1: Standard CNN architecture

A standard CNN architecture consists of an  $M \times N$  rectangular array of cells ( $C(i, j)$ ) with Cartesian coordinates  $(i, j)$ ,  $i = 1, 2, \dots, M$ ,  $j = 1, 2, \dots, N$  (Fig. 2.1).

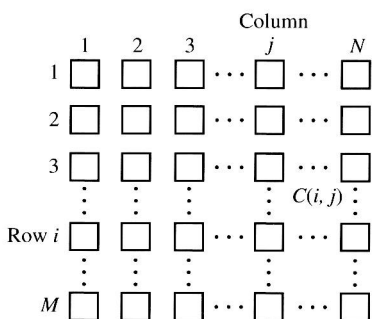


Fig. 2.1.

*Remark:*

There are applications where  $M \neq N$ . For example, a  $5 \times 512$  CNN would be more appropriate for a scanner, fax machine, or copy machine.

#### Definition 2: Sphere of influence of cell $C(i, j)$

The *sphere of influence*,  $S_r(i, j)$ , of the radius  $r$  of cell  $C(i, j)$  is defined to be the set of all the neighborhood cells satisfying the following property

$$S_r(i, j) = \{C(k, l) \mid \max_{1 \leq k \leq M, 1 \leq l \leq N} \{|k - i|, |l - j|\} \leq r\} \quad (2.1)$$

where  $r$  is a positive integer.