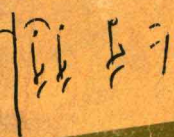


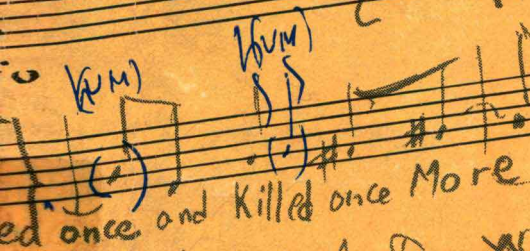
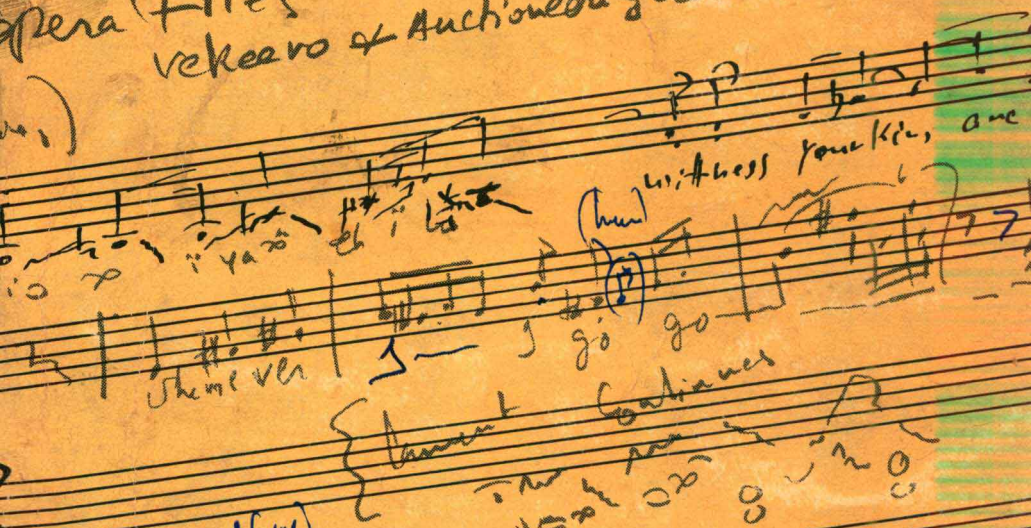
our new will separate  
 center for singing choir  
 [May use to our choirs  
 on the Dance



# THE GRADUATE SCHOOL BULLETIN

KENT STATE UNIVERSITY  
 KENT, OHIO 44242  
 CATALOG 1971-72

Opera Flies  
 we know of Auctioneering scene



Nature to the word  
 the tune them place words into tune  
 of yesterday get full hold of the  
 your vocal chords in the

# THE GRADUATE SCHOOL BULLETIN

KENT STATE UNIVERSITY  
KENT, OHIO 44242  
CATALOG - 1971-72

## COVER

Two manuscript scores of a new composition by Professor El-Dabh are shown. The composition, "Opera Flies," is for seven singers, three choruses and wind orchestra with percussion. The opera deals with American Humanism challenged by the incident which occurred at Kent last May.

## ACCREDITATION

Kent State University is accredited by the North Central Association of Colleges and Secondary Schools, American Association of Collegiate Schools of Business, American Board of Examiners in Speech Pathology & Audiology, American Library Association, American Psychological Association, National Architectural Accrediting Board, National Association of Schools of Art, National Association of Schools of Music, the National Council for Accreditation of Teacher Education, and the National League for Nursing.

---

Volume LIX

Number 6 and 7

---

*Published monthly by Kent State University, Kent, Ohio*

KENT STATE UNIVERSITY BULLETIN

JULY 1971

Entered as second class matter at the post office at Kent, Ohio 44242

---

## TABLE OF CONTENTS

UNIVERSITY ADMINISTRATION .....	5
ACADEMIC ORGANIZATION .....	6
DEPARTMENT CHAIRMEN .....	7
GRADUATE COUNCIL .....	8
GRADUATE STUDENT COUNCIL .....	9
RESEARCH COMMITTEE .....	10
GRADUATE SCHOOL CALENDAR .....	11
THE UNIVERSITY .....	15
THE GRADUATE SCHOOL .....	23
THE DOCTORAL PROGRAMS .....	41
THE MASTER'S PROGRAMS .....	47
SPECIAL NON-DEGREE STUDENTS .....	61
TRANSIENT STUDENTS .....	62
COURSES OF INSTRUCTION .....	63
THE GRADUATE FACULTY .....	285
INDEX .....	305
CAMPUS MAP .....	310
DIRECTORY OF COMMUNICATIONS .....	315



# UNIVERSITY ADMINISTRATION

## BOARD OF TRUSTEES

	<i>Term Expires</i>
ROBERT L. BAUMGARDNER, Westlake .....	1978
KENNETH W. CLEMENT, M.D., Cleveland .....	1974
ROBERT C. DIX, <i>President</i> , Kent .....	1973
CLAYTON G. HORN, Canton .....	1971
CYRIL R. PORTHOUSE, Kent .....	1972
ROBERT H. STOPHER, <i>Vice-President</i> , Akron .....	1976
WILLIAM D. TAYLOR, Hartville .....	1979
ROBERT E. TSCHANTZ, M.D., Canton .....	1977
WILLIAM M. WILLIAMS, Akron .....	1975

SUE GAMBACCINI, *Secretary*

FREDERICK H. BAUER, *Treasurer*

## EXECUTIVE OFFICERS OF THE UNIVERSITY

ROBERT I. WHITE, Ph.D., L.H.D., L.L.D., Pd.D. ....	<i>President</i>
[Resignation effective September 15, 1971]	
DAVID A. AMBLER, Ed.D. ....	<i>Vice-President for Student Affairs</i>
RICHARD E. DUNN, B.S. ....	<i>Vice-President for Business</i>
BERNARD HALL, Ph.D. ....	<i>Vice-President and Provost</i>
RONALD W. ROSKENS, Ph.D. ....	<i>Vice-President for Administration</i>
RONALD S. BEER, Ph.D. ....	<i>General Executive Assistant to the President</i>
WILLIAM W. CONVERSE, Ed.D. ....	<i>Executive Assistant to the President for University Planning and Analysis</i>
FREDERICK H. BAUER, B.S. ....	<i>Treasurer</i>
MILO R. LUDE, M.A. ....	<i>Director of Intercollegiate Athletics</i>

## ACADEMIC ORGANIZATION

BERNARD HALL, Ph.D. ....	<i>Vice-President and Provost</i>
JOHN A. FLOWER, Ph.D. ....	<i>Associate Provost</i>
BENJAMIN G. MCGINNIS, Ed.D. ....	<i>Assistant Provost for Educational Services</i>

### REGIONAL CAMPUSES

WILLIAM M. STEPHENS, M.S. ....	<i>Dean</i>
THOMAS L. LAMB, M.Ed. ....	<i>Associate Dean</i>
NATALE A. SICURO, Ph.D. ....	<i>Assistant Dean</i>

### COLLEGE OF ARTS AND SCIENCES

BRUCE HARKNESS, Ph.D. ....	<i>Dean</i>
RUDOLPH O. BUTTLAR, Ph.D. ....	<i>Associate Dean</i>
THOMAS R. KNIPP, Ph.D. ....	<i>Assistant Dean</i>
THOMAS S. KORLOS, M.A. ....	<i>Assistant Dean</i>

### COLLEGE OF BUSINESS ADMINISTRATION

GAIL E. MULLIN, D.B.A. ....	<i>Dean</i>
JOHN RYANS, JR., D.B.A. ....	<i>Associate Dean</i>
DONALD R. DOMM, Ph.D. ....	<i>Assistant Dean</i>
ALBERT C. HEINLEIN, Ph.D. ....	<i>Assistant Dean</i>

### COLLEGE OF EDUCATION

ROBERT J. ALFONSO, Ph.D. ....	<i>Dean</i>
ARCHIE E. HENDRICKS, Ph.D. ....	<i>Assistant Dean</i>
J. KEITH VARNEY, Ph.D. ....	<i>Assistant Dean</i>

### COLLEGE OF FINE AND PROFESSIONAL ARTS

(To be appointed) .....	<i>Dean</i>
MURVIN H. PERRY, Ph.D. ....	<i>Associate Dean</i>
CHARLES W. KEITH, Ph.D. ....	<i>Assistant Dean</i>

### GRADUATE SCHOOL AND RESEARCH

JAMES W. MCGRATH, Ph.D. ....	<i>Dean, Graduate School and Research</i>
JOHN D. WHITE, Ph.D. ....	<i>Associate Dean, Graduate School</i>
ALAN H. COOGAN, Ph.D. ....	<i>Associate Dean, Graduate School and Research</i>
DANIEL C. JONES, J.D. ....	<i>Director of Research Administration</i>

### SCHOOL OF HEALTH, PHYSICAL EDUCATION AND RECREATION

CARL E. ERICKSON, Ed.D. ....	<i>Dean</i>
MATTHEW C. RESICK, Ph.D. ....	<i>Associate Dean</i>
BEVERLY L. SEIDEL, Ed.D. ....	<i>Acting Assistant Dean</i>

### HONORS AND EXPERIMENTAL COLLEGE

MYRON J. LUNINE, Ph.D. ....	<i>Dean</i>
WESLEY C. ZAYNOR, Ph.D. ....	<i>Associate Dean</i>

**SCHOOL OF LIBRARY SCIENCE**

GUY A. MARCO, Ph.D. ....Dean  
KATHRYN M. MCCHESENEY, M.L.S. ....Assistant Dean

## LIBRARY

**HYMAN W. KRITZER, M.S.L.S.** .... *Assistant Provost and Director of Libraries*

## DEPARTMENT CHAIRMEN

Architecture .....	JOSEPH F. MORBITO, M.Ed. <i>Registered Architect</i>
Art .....	ELMER L. NOVOTNY, M.A.
Biological Sciences .....	CHARLES V. RILEY, Ph.D.
Business Administration .....	GAIL E. MULLIN, D.B.A.
Chemistry .....	RAYMOND R. MYERS, Ph.D.
Economics .....	ROBERT J. SAUNDERS, Ph.D.
Education .....	ROBERT J. ALFONSO, Ph.D.
English .....	MARTIN K. NURMI, Ph.D.
Geography .....	JORDAN A. HODGKINS, Ph.D.
Geology .....	E. A. FREDERICKSON, Ph.D.
Germanic and Slavic Languages .....	WALTER L. DEVOLLD, Ph.D.
Health and Physical Education .....	CARL E. ERICKSON, D.Ed.
History .....	HENRY N. WHITNEY, Ph.D.
Home Economics .....	THEODORE IRMITER, Ph.D.
Journalism .....	MURVIN H. PERRY, Ph.D.
Library Science .....	GUY A. MARCO, Ph.D.
Mathematics .....	RICHARD K. BROWN, Ph.D.
Music .....	LINDSEY MERRILL, Ph.D.
Philosophy .....	GEORGE HENRY MOULDS, Ph.D.
Physics .....	(to be appointed)
Political Science .....	THOMAS D. UNGS, Ph.D.
Psychology .....	SEYMOUR H. BARON, Ph.D.
Romance Languages and Classics .....	CHARLES F. KIRK, Ph.D.
Sociology and Anthropology .....	(to be appointed)
Speech .....	L. LEROY COWPERTHWAIT, Ph.D.
Technology .....	CHARLES W. KEITH, Ph.D.

For the following Graduate Major Curricula, the below listed faculty members serve as Major Advisers:

Chemical Physics .....A. A. SILVIDI, Ph.D.  
Educational Psychology .....CARL AURIA, D.Ed.  
Rehabilitation Counseling .....KEITH E. PALMERTON, Ph.D.  
Social Science .....DRS. POWNALL, MONTEITH, BORDNE, TAYLOR

## GRADUATE COUNCIL

JAMES W. McGRATH, Ph.D., <i>Chairman</i> .....	<i>Professor of Physics</i> <i>Dean, Graduate School and Research</i>
JOHN D. WHITE, Ph.D. ....	<i>Professor of Music</i> <i>Associate Dean, Graduate School</i>
BRUCE HARKNESS, Ph.D. ....	<i>Professor of English</i> <i>Dean, College of Arts and Sciences</i>
GAIL E. MULLIN, D.B.A. ....	<i>Professor of Economics</i> <i>Dean, College of Business Administration</i>
ROBERT J. ALFONSO, Ph.D. ....	<i>Professor of Secondary Education</i> <i>Dean, College of Education</i>
(To be appointed) .....	.....
HYMAN W. KRITZER, M.S.L.S. ....	<i>Dean, College of Fine and Professional Arts</i> <i>Professor, Library Administration</i> <i>Director of Libraries</i>
ELMER E. BJERREGAARD, M.Arch. ....	<i>Associate Professor of Architecture</i>
FRANK L. BYRNE, Ph.D. ....	<i>Professor of History</i>
JOHN H. DAILY, M.A. ....	<i>Graduate Student, Social Sciences</i>
H. J. EYMAN, B.S. ....	<i>Graduate Student, Natural Sciences and Mathematics</i>
BENJAMIN A. FOOTE, Ph.D. ....	<i>Associate Professor of Biological Sciences</i>
EDWARD H. FRIEDEN, Ph.D. ....	<i>Professor of Chemistry</i>
HELMUT GERMER, Ph.D. ....	<i>Associate Professor of</i> <i>Germanic &amp; Slavic Languages</i>
LAWRENCE A. GOLDING, Ph.D. ....	<i>Professor of HPE&amp;R</i>
MORTON GROSSMAN, B.A. ....	<i>Associate Professor of Art</i>
KAREN HANEY, B.S.Ed. ....	<i>Graduate Student, Education</i>
JORDAN A. HODGKINS, Ph.D. ....	<i>Professor of Geography</i>
THEODORE F. IRMITER, Ph.D. ....	<i>Professor of Home Economics</i>
THEODORE Y. JOSEPH, B.A., B.S. ....	<i>Graduate Student, Professional Arts</i>
JACOB LEED, Ph.D. ....	<i>Associate Professor of English</i>
FRANK A. MARSCHIK, Ed.D. ....	<i>Professor of Technology</i>
BARRY B. MILLER, Ph.D. ....	<i>Associate Professor of Geology</i>
WILLIAM C. MONROE, B.Arch. ....	<i>Graduate Student, Fine Arts</i>
J. STEPHEN NEWMANN, M.A. ....	<i>Graduate Student, Humanities</i>
JOHN H. PARKS, Ph.D. ....	<i>Professor of Romance Languages &amp; Classics</i>
ROBERT E. POWELL, Ph.D. ....	<i>Associate Professor of Mathematics</i>
DAVID C. RICCIO, Ph.D. ....	<i>Associate Professor of Psychology</i>
A. ROBERT ROGERS, Ph.D. ....	<i>Professor of Library Science</i>
ROBERT J. SAUNDERS, Ph.D. ....	<i>Associate Professor of Economics</i>
ANTHONY A. SILVIDI, Ph.D. ....	<i>Professor of Physics</i>
KALYANMAL SINGHAL, M.B.A. ....	<i>Graduate Student, Business Administration</i>
JIM BOB STEPHENSON, Ph.D. ....	<i>Associate Professor of Speech</i>
MORRIS SUNSHINE, Ph.D. ....	<i>Associate Professor of Sociology &amp; Anthropology</i>
RICHARD W. TAYLOR, Ph.D. ....	<i>Professor of Political Science</i>
HAROLD VAN WINKLE, Ed.D. ....	<i>Professor of Journalism</i>
JAMES L. WATERS, Ph.D. ....	<i>Associate Professor of Music</i>
ARTHUR M. WHEELER, Ph.D. ....	<i>Associate Professor of Philosophy</i>

NOTE: There is no elected faculty member at present for the Department of Business Administration.

# GRADUATE STUDENT COUNCIL

DORIS ANDRIE, B.S. ....	<i>Graduate Student, Art</i>
ANDREW J. BALASH, B.A. ..	<i>Graduate Student, Romance Languages &amp; Classics</i>
KAREN A. BYERLY, B.A. ....	<i>Graduate Student, Sociology &amp; Anthropology</i>
MILTON L. COOPER, B.S. ....	<i>Graduate Student, Geology</i>
JOHN H. DAILY, M.A. ....	<i>Graduate Student, Political Science</i>
JOSEPH W. DAVIDSON, B.B.A. ....	<i>Graduate Student, Economics</i>
WILLIAM C. DAY, B.S. ....	<i>Graduate Student, HPE&amp;R</i>
H. J. EYMAN, B.S. ....	<i>Graduate Student, Chemistry</i>
KAREN HANEY, B.S.Ed. ....	<i>Graduate Student, Education</i>
THEODORE Y. JOSEPH, B.A., B.S. ....	<i>Graduate Student, Journalism</i>
GERDA T. KIM, B.A. ....	<i>Graduate Student, Germanic &amp; Slavic Languages</i>
PAUL M. KUHNERT, M.S. ....	<i>Graduate Student, Biological Sciences</i>
WILLIAM C. MONROE, B.Arch. ....	<i>Graduate Student, Architecture</i>
J. STEPHEN NEWMANN, M.A. ....	<i>Graduate Student, English</i>
GORDON R. NICHOLS, B.A. ....	<i>Graduate Student, Library Science</i>
DONALD C. PEACE, B.S. ....	<i>Graduate Student, Technology</i>
SYLVIA G. PENGILLY, G.G.S.M. ....	<i>Graduate Student, Music</i>
MARGARET E. RALSTON, B.A. ....	<i>Graduate Student, Psychology</i>
WILLIAM A. RESCH, B.S. ....	<i>Graduate Student, Physics</i>
JOAN L. SCHAEFFER, B.A. ....	<i>Graduate Student, Philosophy</i>
STEVEN A. SHAROFF, B.A. ....	<i>Graduate Student, History</i>
KALYANMAL SINGHAL, M.B.A. ....	<i>Graduate Student, Business Administration</i>
CHARLES G. WAUGH, M.A. ....	<i>Graduate Student, Speech</i>
TINA A. WEISBERG, B.S. ....	<i>Graduate Student, Home Economics</i>
E. STEVENS YOUNG, B.S. ....	<i>Graduate Student, Geography</i>

NOTE: There is no elected graduate student member at present for the Department of Mathematics.

## RESEARCH COMMITTEE

CARL AURIA, D.Ed., <i>Chairman</i> .....	<i>Associate Professor, Special Education</i>
JOSEPH L. BAIRD, Ph.D. ....	<i>Associate Professor, English</i>
ALAN H. COOGAN, Ph.D. ....	<i>Associate Professor, Geology</i> <i>Associate Dean, Graduate School and Research</i>
EDWARD H. FRIEDEN, Ph.D. ....	<i>Professor, Chemistry</i>
JOHN A. FRIDY, Ph.D. ....	<i>Associate Professor, Mathematics</i>
GEORGE S. GOODELL, Ph.D. ....	<i>Professor, Economics</i>
BERNARD HALL, Ph.D. ....	<i>Professor, Economics</i> <i>Vice-President and Provost</i>
LAWRENCE S. KAPLAN, Ph.D. ....	<i>Professor, History</i>
ALFRED G. KIESELBACH, D.Ed. ....	<i>Professor, Art</i>
JAMES W. McGRATH, Ph.D. ....	<i>Professor, Physics</i> <i>Dean, Graduate School and Research</i>
E. LINDSEY MERRILL, Ph.D. ....	<i>Director, Professor, Music</i>
ROBERT E. MORIN, Ph.D. ....	<i>Professor, Psychology</i>
WILLIAM A. RODGERS, Ed.D. ....	<i>Associate Professor,</i> <i>Educational Administration</i>
ROBERT D. SMITH, Ph.D. ....	<i>Associate Professor, Management</i>
RICHARD W. TAYLOR, Ph.D. ....	<i>Professor, Political Science</i>

## GRADUATE SCHOOL OFFICE HOURS

**Monday - Friday 8:00 A.M. - 5:00 P.M.**

**(Closed 12:00 Noon - 1:00 P.M.)**

**Saturday 8:00 A.M. - 12:00 Noon**

**101 Kent Hall**

**Area Code - 216**

**672-2660**

# GRADUATE SCHOOL CALENDAR

**1971-72**

## **Fall Quarter—1971**

August 14	Saturday	Last day to file application and transcripts with Graduate School to begin work in Fall Quarter.
Sept. 25	Saturday	Workshop on College Teaching.
Sept. 27, 28	Mon.-Tue.	Registration.
Sept. 29	Wednesday	Classwork begins.
October 9	Saturday	Last day to file application for December graduation for doctoral and master's candidates.
October 30	Saturday	Final date for oral examination of doctoral and master's candidates planning December graduation.
Nov. 24	Wednesday	All candidates for December graduation must have dissertation or thesis and abstract filed in Graduate School Office.
Nov. 25-26	Thurs.-Fri.	Thanksgiving recess.
Dec. 13-17	Mon.-Fri.	Examination week.
Dec. 18	Saturday	Commencement.

## **Winter Quarter—1972**

Dec. 4	Saturday	Last day to file application and transcripts with Graduate School to begin work in Winter Quarter.
Jan. 3	Monday	Final Registration and Change of Program.
Jan. 4	Tuesday	Classwork begins.
Jan. 8	Saturday	Last day to file application for March graduation for doctoral and master's candidates.

Feb. 12	Saturday	Final date for oral examination of doctoral and master's candidates planning March graduation.
March 1	Wednesday	Deadline for application for NASA and NSF Traineeships and NDEA Doctoral Fellowships. (Apply to Department.)
March 4	Saturday	All candidates for March graduation must have dissertation or thesis and abstract filed in Graduate School Office.
March 15	Wednesday	Deadline for receiving nominations from departments for NSF and NASA Traineeships and NDEA Fellowships.
March 13-17	Mon.-Fri.	Examination week.
March 18	Saturday	Commencement.

### **Spring Quarter—1972**

Feb. 26	Saturday	Last day to file application and transcripts with Graduate School to begin work in Spring Quarter.
March 27	Monday	Final Registration and Change of Program.
March 28	Tuesday	Classwork begins.
April 1	Saturday	Last day to file application for June graduation for doctoral and master's candidates.
May 6	Saturday	Final date for oral examination of doctoral and master's candidates planning June graduation.
May 20	Saturday	All candidates for June graduation must have dissertation or thesis and abstract filed in Graduate School Office.
June 5-9	Mon.-Fri.	Examination week.
June 10	Saturday	Commencement.

**First Summer Term—1972**

May 13	Saturday	Last day to file application and transcripts with Graduate School to begin work in Summer Quarter.
June 16	Friday	Final Registration and Change of Program. (Date tentative, verify with Registrar's Office.)
June 19	Monday	Classwork begins.
June 24	Saturday	Last day to file application for August graduation for doctoral and master's candidates.
July 5	Wednesday	Deadline for receiving Graduate Student Appointment forms for graduate assistants, graduate research assistants, and teaching fellows receiving fall appointments.
July 21	Friday	Classes end.

**Second Summer Term—1972**

Registration — Second Term registration to be completed concurrently with First Term or prior to start of classes. Consult Registrar's Office for procedures.

July 22	Saturday	Final date for oral examinations of doctoral and master's candidates planning August graduation.
July 24	Monday	Classwork begins.
August 12	Saturday	All candidates for August graduation must have dissertation or thesis and abstract filed in Graduate School Office.
August 25	Friday	Classes end.
August 26	Saturday	Commencement.

**Fall Quarter—1972**

<b>January 8</b>	<b>Saturday</b>	<b>Last day to file application and transcripts for students applying for a graduate assistantship for Fall Quarter.</b>
------------------	-----------------	--

(Note: There may be minor changes in the dates listed above. The University reserves the right to make such changes whenever conditions or circumstances warrant such.)



# THE UNIVERSITY

Kent State University, founded in 1910, is maintained by the State of Ohio. It is controlled by a board of nine trustees appointed by the governor, subject to confirmation of the State senate, and is supported largely by legislative appropriation, supplemented by student fees.

The location of the University, in the densely populated section of North-eastern Ohio, is such that within a 50-mile radius of the institution are nearly one-half of the population and two-thirds of the State's wealth. Although a considerable proportion of the people in this section are engaged in farming, the majority are employed in industry and commerce.

## The Aims of the University

Kent State University is dedicated to teaching the many who want to learn, to advancing knowledge, and to providing appropriate public service. The University, with the singular advantages of a large residential state university located in the heart of the most heavily populated section of Ohio, is both a community of scholars and an important intellectual, cultural, scientific, and technological resource for its megalopolitan area. The teaching, research, scholarly publication, and professional activities of its faculty have established it as a dynamic institution of growing eminence in American higher education.

The University's primary concern is the student. It endeavors to provide the academic atmosphere, the human associations, and the discipline vital to the student's sound intellectual growth and character development. The various programs of curricular and extracurricular activities are designed to stimulate his curiosity, broaden his perspective, enrich his awareness, deepen his understanding, establish disciplined habits of thought, prepare him for a vocation, and help him realize his potential as an individual and as a responsible and informed member of society.

The University will continue to develop as an active center of learning whose scholars extend the boundaries of knowledge and culture of the populous area it serves. The University supports the research and other creative work of its faculty and students to encourage these activities for their own sake and also to vitalize teaching at both the undergraduate and graduate levels.

Kent State University, like other large American state universities, combines service with teaching and research, and will make available its rich variety of cultural, educational, technical, and other resources to its area, to the State of Ohio, to the nation, and to the international community.

## Organization

The University includes the College of Education, the College of Arts and Sciences, the College of Business Administration, the College of Fine and Professional Arts, the Honors and Experimental College, the Regional Campuses, the School of Architecture, the School of Art, the School of Health, Physical Education & Recreation, the School of Journalism, the School of Library Science, the School of Music, the School of Nursing, the School of Speech, the School of Technology, and the Graduate School. Detailed information will be found in the *General Catalog* under these headings.

## Location

Kent, a city of more than 28,000, is situated on the banks of the Cuyahoga River, in Portage County, 11 miles east of Akron, 33 miles south of Cleveland, 40 miles west of Youngstown, and 28 miles north of Canton.

The University is on a beautiful campus of 1,581 acres (including the airport and an 18-hole golf course), most of which were purchased in 1948 to provide for continued expansion of facilities required by increasing student enrollment. Many of the buildings are arranged in a semicircle near the crest of a wooded hillside, from which one looks down upon Kent and the surrounding country.

While the University is within walking distance of the main business district of the city, it is sufficiently removed to provide the quiet necessary for study. Kent is near enough to large urban centers so students may take advantage of the cultural opportunities which they afford.

## Buildings and Facilities

The University's physical plant has been expanded to meet the needs of full-time student enrollment which increased from 2,700 in 1941 to more than 20,000 in 1970. Its buildings, grounds and equipment are valued at some \$121 million.

There are a total of 96 buildings on campus. During the past year a new 12-story library and an ice arena were completed. Currently under construction is a university center, and a complete renovation of McGilvrey Hall is continuing. Present plans call for work to begin soon on a business administration building, an art building, and 300 additional married student housing units.

## Computer Center

The Computer Center operates an IBM 1130 and a Burroughs 5500 with customary peripheral equipment. Professor Byron B. Dressler, of the