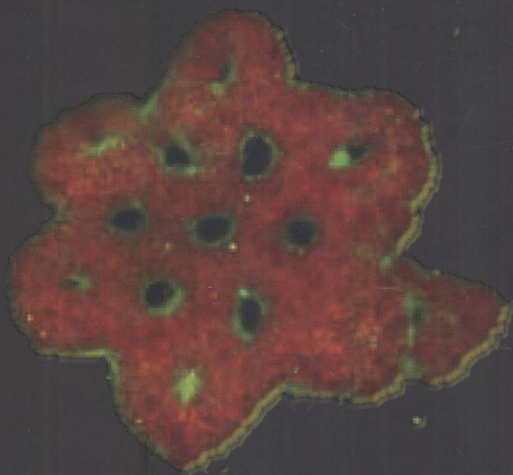


Advances in TISSUE ENGINEERING



Editor

Julia Polak

Co-editors

Sakis Mantalaris

Sian E. Harding

Imperial College Press

Q813
A244

Advances in TISSUE ENGINEERING



Editor

Julia Polak

Imperial College, London, UK

Co-editors

Sakis Mantalaris

Sian E. Harding

Imperial College, London, UK



E2009000164

ICP

Imperial College Press

Published by

Imperial College Press
57 Shelton Street
Covent Garden
London WC2H 9HE

Distributed by

World Scientific Publishing Co. Pte. Ltd.
5 Toh Tuck Link, Singapore 596224
USA office: 27 Warren Street, Suite 401-402, Hackensack, NJ 07601
UK office: 57 Shelton Street, Covent Garden, London WC2H 9HE

British Library Cataloguing-in-Publication Data

A catalogue record for this book is available from the British Library.

ADVANCES IN TISSUE ENGINEERING

Copyright © 2008 by Imperial College Press

All rights reserved. This book, or parts thereof, may not be reproduced in any form or by any means, electronic or mechanical, including photocopying, recording or any information storage and retrieval system now known or to be invented, without written permission from the Publisher.

For photocopying of material in this volume, please pay a copying fee through the Copyright Clearance Center, Inc., 222 Rosewood Drive, Danvers, MA 01923, USA. In this case permission to photocopy is not required from the publisher.

ISBN-13 978-1-84816-182-5
ISBN-10 1-84816-182-4

Typeset by Stallion Press
Email: enquiries@stallionpress.com

Printed in Singapore by Mainland Press Pte Ltd

Advances in

TISSUE
ENGINEERING



|Contributors

Megan Allyse, MA

Wellcome Trust PhD Candidate
Institute for Science and Society
University of Nottingham
West Wing, Law and Social Science Building
University Park, Nottingham, NG7 2RD, UK

Eric Alton, MA, MD, FRCP, FMedSci

Professor of Gene Therapy and Respiratory Medicine
Honorary Consultant Physician, The Royal Brompton Hospital
Department of Gene Therapy
The National Heart and Lung Institute
Imperial College London
Emmanuel Kaye Building
Manresa Road, London, SW3 6LR, UK

Anthony Atala, MD

W. Boyce Professor and Chair, Department of Urology
Director, Wake Forest Institute for Regenerative Medicine
Wake Forest University Health Sciences
A1 Bldg., 4th Floor
Medical Center Boulevard
Winston-Salem, NC 27157, USA

Frédéric Baron, MD

Department of Hematology
University of Liege, Belgium
National Fund for Scientific Research Belgium
Hematology, CHU Sart-Tilman, B4000 Liege, Belgium

Zahia Bayoussef, MPharm

Wolfson Centre for Stem Cells, Tissue Engineering,
and Modelling (STEM)
Centre for Biomolecular Sciences, School of Pharmacy
University of Nottingham
University Park, Nottingham, NG7 2RD, UK

Valérie Besnard, PhD

Division of Pulmonary Biology
Cincinnati Children's Hospital Medical Center
3333 Burnet Avenue, Cincinnati, OH 45229-3039, USA

Kishore Bhakoo, PhD

Head, Stem Cell Imaging
MRC Clinical Sciences Centre
Imperial College London
Hammersmith Campus
Du Cane Road, London, W12 0NN, UK

Emma J. Birks, MRCP, PhD

Royal Brompton and Harefield NHS Trust
Harefield, Middlesex, UB9 6JH, UK

Helen M. Blau, PhD

Professor and Director
Baxter Laboratory in Genetic Pharmacology
Stanford University School of Medicine
269 Campus Drive, Stanford, CA 94305-5175, USA

Aldo R. Boccaccini, Dr-Ing. Habil.

Reader in Materials Science
Department of Materials
Imperial College London
Prince Consort Road
London, SW7 2BP, UK

Olga Boubriak, BSc, PhD

Department of Physiology, Anatomy and Genetics
University of Oxford
South Parks Road, Oxford, OX1 3QX, UK

Peter R. Braude, MA, PhD, FRCOG, FMedSci

Head, Department of Women's Health
Division of Reproduction and Endocrinology
King's College London

Assisted Conception Unit, St. Thomas' Hospital
Guy's and St. Thomas' NHS Foundation Trust
10th Floor, North Wing
Westminster Bridge Road, London, SE1 7EH, UK

Kelvin G. M. Brockbank, PhD

Principal Research Scientist, Georgia Tech/Emory Center
for the Engineering of Living Tissues (Atlanta, Georgia, USA)
President and Chief Science Officer, Cell and Tissue Systems, Inc.
2231 Technical Parkway, North Charleston, SC 29406, USA

Bruce A. Bunnell, PhD

Professor, Department of Pharmacology
Center for Gene Therapy
Chairman, Division of Gene Therapy
Tulane National Primate Research Center
Tulane University Health Sciences Center
SL83, Tulane University School of Medicine
1430 Tulane Avenue, New Orleans, LA 70112-2699, USA

Lee Buttery, MSc, PhD

Wolfson Centre for Stem Cells, Tissue Engineering
and Modelling (STEM)
Centre for Biomolecular Sciences, School of Pharmacy
University of Nottingham
University Park, Nottingham, NG7 2RD, UK

Tony Cass, DPhil (Oxon), FRSC, Cchem, Csci, MIET

Deputy Director and Research Director
Institute of Biomedical Engineering
Faculty of Engineering
Imperial College London
South Kensington Campus
Level 4, Bessemer Building
London, SW7 2AZ, UK

Smadar Cohen, PhD

Claire and Harold Oshry Professor Chair in Biotechnology
Department of Biotechnology Engineering
Ben-Gurion University of the Negev
Marcus Campus, Building 39, Room 222
Beer-Sheva, 84105, Israel

Wei Cui, MD, PhD

Institute of Reproductive and Developmental Biology
Faculty of Medicine, Imperial College London
Hammersmith Campus
Du Cane Road, London, W12 0NN, UK

Zhanfeng Cui, BSc, MSc, MA, PhD, FICHEM

Department of Engineering Science
University of Oxford
Parks Road, Oxford, OX1 3PJ, UK

Ivan A. Diakonov

Department of Craniofacial Development
King's College London Dental Institute at Guy's
King's College and St. Thomas' Hospitals
Floor 27 Guy's Tower, St. Thomas St.
London, SE1 9RT, UK

Yanan Du, PhD

Postdoctoral Associate
Harvard-Massachusetts Institute of Technology
Division of Health Sciences and Technology
Harvard Medical School/Brigham and Women's Hospital
Room 265, 65 Landsdowne Street
Cambridge, MA 02139, USA

Tal Dvir, MSc

Department of Biotechnology Engineering
Ben-Gurion University of the Negev
Marcus Campus, Building 39, Room 223
Beer-Sheva, 84105, Israel

Nicolas Forraz, PhD, BSc(Hons)

Senior Research Associate

Manager Research and Development, “Novus Sanguis” charity,
funding Responsible Regenerative Medicine

Newcastle Centre for Cord Blood

Institute of Human Genetics

North East England Stem Cell Institute

International Centre for Life, Central Parkway

Newcastle University

Newcastle-upon-Tyne, NE1 3BZ, UK

Robert S. George, BSc, BM, MRCS

Royal Brompton and Harefield NHS Trust

Harefield, Middlesex, UB9 6JH, UK

Sourabh Ghosh, PhD

Department of Biomedical Engineering

Tufts University

Medford, Massachusetts 02155, USA

Jeffrey M. Gimble, MD, PhD

Stem Cell Biology Laboratory

Pennington Biomedical Research Center

Louisiana State University System

6400 Perkins Rd, Baton Rouge, LA 70808, USA

Amanda Green, Grad Dip Phys, MSc

Department of Gene Therapy

The National Heart and Lung Institute

Imperial College London and The Royal Brompton Hospital

The Emmanuel Kaye Building

Manresa Road, London, SW3 6LR, UK

Farshid Guilak, PhD

Director, Orthopaedic Research Laboratories

Department of Surgery

Duke University Medical Center

375 MSRB, Box 3093

Durham, NC 27710, USA

Deepak M. Gupta, MD

Postdoctoral Research Fellow
Hagey Laboratory for Pediatric Regenerative Medicine
Stanford University School of Medicine
257 Campus Drive, Stanford, CA 94305-5148, USA

Pascale V. Guillot, BSc, MSc, PhD

Group Leader in Stem Cell Therapy
Division of Surgery, Oncology, Reproductive Biology
and Anaesthetics (SORA)
Institute of Reproductive and Developmental Biology
Faculty of Medicine, Imperial College London
Hammersmith Campus
Du Cane Road, London, W12 0NN, UK

Nagy A. Habib, FRCS, MD

Department of Biosurgery and Surgical Technology (B Block)
Division of Surgery, Oncology, Reproductive Biology
and Anaesthetics (SORA)
Imperial College London
Hammersmith Hospital Campus
Du Cane Rd, London, W12 0NN, UK

Sian E. Harding, PhD, FAHA

Professor of Cardiac Pharmacology
National Heart and Lung Institute (NHLI), Faculty of Medicine
Imperial College London
Guy Scadding Building
Dovehouse St., London, SW3 6LY, UK

Neil Harris, PhD

LGC Limited
Queens Road, Teddington
Middlesex, TW11 0LY, UK

Anne K. Haudenschild, PhD

Cytori Therapeutics Inc.
3020 Callan Road
San Diego, CA 92121, USA

Marc H. Hedrick, MD

Cytori Therapeutics Inc.
3020 Callan Road
San Diego, CA 92121, USA

Anthony P. Hollander, PhD

ARC Professor of Rheumatology and Tissue Engineering
Department of Cellular and Molecular Medicine
School of Medical Sciences, University of Bristol
University Walk, Clifton, Bristol, BS8 1TD, UK

Elizabeth A. Horner, PhD

Skeletal Tissue Engineering Laboratory
Department of Oral Biology
Leeds Dental Institute, University of Leeds
Leeds, LS2 9LU, UK

Jeffrey A. Hubbell, PhD

Laboratory for Regenerative Medicine and Pharmacobiology
Institute of Bioengineering
Swiss Federal Institute of Technology (EPFL)
Bldg. AAB039, Station 15
CH-1015 Lausanne, Switzerland

Charles J. Hunt, PhD

Operations Manager, UK Stem Cell Bank
National Institute for Biological Standards and Control
Blanche Lane, South Mimms, Herts, EN6 3QG, UK

Julian R. Jones, PhD, DIC, Meng (Oxon.)

Royal Academy of Engineering/EPSRC
Research Fellow and Lecturer Designate
Department of Materials
Imperial College London
South Kensington Campus
London, SW7 2AZ, UK

David L. Kaplan, PhD

Professor and Chair, Department of Biomedical Engineering
Director, Bioengineering and Biotechnology Center
Professor, Department of Chemical and
Biological Engineering, Tufts University
4 Colby Street, Medford, Massachusetts 02155, USA

Ali Khademhosseini, PhD

Assistant Professor
Harvard-Massachusetts Institute of Technology
Division of Health Sciences and Technology
Harvard Medical School/Brigham and Women's Hospital
Room 265, 65 Landsdowne Street
Cambridge, MA 02139, USA

Jennifer Kirkham, PhD

Professor of Biomineralization
Head, Department of Oral Biology
Leeds Dental Institute, University of Leeds
Leeds, LS2 9LU, UK

Matthew D. Kwan, MD

Postdoctoral Research Fellow
Hagey Laboratory for Pediatric Regenerative Medicine
Stanford University School of Medicine
257 Campus Drive, Stanford, CA 94305-5148, USA

Robert S. Langer, PhD

Institute Professor, Department of Chemical Engineering
Massachusetts Institute of Technology
Room E25-342, 77 Massachusetts Avenue
Cambridge, MA 02139-4307, USA

Nataša Levičar, PhD

Department of Surgical Oncology and Technology (B Block)
Imperial College London
Hammersmith Hospital Campus
Du Cane Road, London, W12 0NN, UK

Zhaohui Li, BSc, Dphil

Department of Engineering Science
University of Oxford
Parks Road, Oxford, OX1 3PJ, UK

Mayasari Lim

Biological Systems Engineering Laboratory
Department of Chemical Engineering and
Chemical Technology
Imperial College London
South Kensington Campus
Room 132, Ground Floor, ACEX Building
London, SW7 2AZ, UK

Michael T. Longaker, MD, MBA, FACS

Deane P. and Louise Mitchell Professor
Director, Hagey Laboratory for Pediatric
Regenerative Medicine
Director, Program in Regenerative Medicine
Deputy Director, Institute of Stem Cell Biology and
Regenerative Medicine
Lucile Packard Children's Hospital
Stanford University School of Medicine
257 Campus Drive, Stanford, CA 94305-5148, USA

Matthias P. Lutolf, PhD

Laboratory of Stem Cell Bioengineering (LSCB)
Institute of Bioengineering
Swiss Federal Institute of Technology (EPFL)
Bldg. AI 3138, Station 15
CH-1015 Lausanne, Switzerland

Sheila MacNeil, BSc, PhD

Professor of Tissue Engineering
Department of Engineering Materials
Kroto Research Institute, University of Sheffield
North Campus, Broad Lane, Sheffield, S3 7HQ, UK

Athanasios Mantalaris, PhD, MSc,

BSc (Hons), Reader in Biological Systems Engineering

Biological Systems Engineering Laboratory

Department of Chemical Engineering and

Chemical Technology

Imperial College London

South Kensington Campus

Room 515, ACE Extension

London, SW7 2AZ, UK

Chris Mason, MBBS, PhD, FRCS

Stem Cell and Regenerative Medicine Bioprocessing Unit

Advanced Centre for Biochemical Engineering

University College London

Roberts Building, Torrington Place

London, WC1E 7JE, UK

Georg Matheis, PhD

Novalung GmbH

Lotzenaecker 3

72379 Germany

Andreas Nikolas Maurer, PhD

Novalung GmbH

Lotzenaecker 3

72379 Germany

Colin P. McGuckin, DPhil, BSc(Hons) PGCTLHE,

CBiol, MIBiol, MRSC, EurProBiol

Professor of Regenerative Medicine

President, “Novus Sanguis” Charity, funding Responsible

Regenerative Medicine

Newcastle Centre for Cord Blood

Institute of Human Genetics

North East England Stem Cell Institute

International Centre for Life, Central Parkway

Newcastle University

Newcastle-upon-Tyne, NE1 3BZ, UK

Stephen Minger, PhD

Senior Lecturer and Director of King's Stem Cell
Biology Laboratory
Wolfson Centre for Age-Related Diseases
King's College London
Strand, London, WC2R 2LS, UK

Caroline Munro, PhD

2, Hillgarth Court
Elvington, York, YO41 4BD, UK

Robert M. Nerem, PhD

Professor and Director
Institute for Bioengineering and Bioscience
Georgia Institute of Technology
315 Ferst Drive, Atlanta, GA 30332-0363, USA

Ioan Nottingher, PhD

Nanoscience Group
School of Physics and Astronomy
The University of Nottingham
University Park, Nottingham, NG7 2RD, UK

Madhava Pai, MS, MSc, DIC, MRCS

Department of Surgical Oncology and Technology (B Block)
Imperial College London
Hammersmith Hospital Campus
Du Cane Road, London, W12 0NN, UK

Nancy L. Parenteau, PhD

Co-founder and Managing Member
Parenteau BioConsultants, LLC
PO Box 448
Fair Haven, VT 05743-0448, USA

Gabriella Passacquale, MD

Stem Cell Imaging
MRC Clinical Sciences Centre
Imperial College London
Hammersmith Campus
Du Cane Road, London, W12 0NN, UK

Donald G. Phinney, PhD

Co-Editor, *Stem Cells* (AlphaMed Press)
Associate Director of Research, Center for Gene Therapy
Professor of Microbiology and Immunology
Tulane University Health Sciences Center
1430 Tulane Avenue
Room 672, J. Bennett Johnston Bldg. (SL-99)
New Orleans, LA 70112, USA

Julia M. Polak, DBE, MD, DSc, FRCP, FRCPath, FMedSci, ILT

Department of Chemical Engineering
Tissue Engineering and Regenerative Medicine
Imperial College London
South Kensington Campus
Room 144, Roderic Hill Building
London, SW7 2AZ, UK

Cathy Prescott, DPhil (Oxon)

Biolatris Ltd.
72 Kimberley Road
Cambridge, CB4 1HJ, UK

Bimal Rajalingam, MD

Postdoctoral Associate
Harvard-Massachusetts Institute of Technology
Division of Health Sciences and Technology
Harvard Medical School/Brigham and Women's Hospital
Room 265, 65 Landsdowne Street
Cambridge, MA 02139, USA

Kevin M. Shakesheff, MPharmS, PhD

Wolfson Centre for Stem Cells, Tissue Engineering,
and Modelling (STEM)
Centre for Biomolecular Sciences, School of Pharmacy
University of Nottingham
University Park, Nottingham, NG7 2RD, UK

Paul Sharpe

Department of Craniofacial Development
King's College London Dental Institute at Guy's
King's College and St. Thomas' Hospitals
Floor 27 Guy's Tower, St. Thomas St.
London, SE1 9RT, UK

Bethany J. Slater, MD

Postdoctoral Research Fellow
Hagey Laboratory for Pediatric Regenerative Medicine
Stanford University School of Medicine
257 Campus Drive, Stanford, CA 94305-5148, USA

Glyn N. Stacey, PhD

Head, Division of Cell Biology and Imaging
Director, UK Stem Cell Bank
National Institute for Biological Standards and Control
Blanche Lane, South Mimms, Herts, EN6 3QG, UK

Jean S. Stephens-Altus, PhD

Department of Bioengineering
Rice University
6100 Main St., MS-142
Houston, TX 77005, USA

Emma L. Stephenson, MA

Advanced Centre for Biochemical Engineering
University College London
Department of Women's Health
Division of Reproduction and Endocrinology
King's College London
Stem Cell Research Lab
Assisted Conception Unit, Guy's Hospital
Guy's and St. Thomas' NHS Foundation Trust
4th Floor, Southwark Wing
Great Maze Pond, London, SE1 9RT, UK